

# 179 Horton Street

**SUBMITTED BY**

Ray White Rockhampton Casey  
stockers@cqoz.com

---

**CREATED ON**

2022-07-04

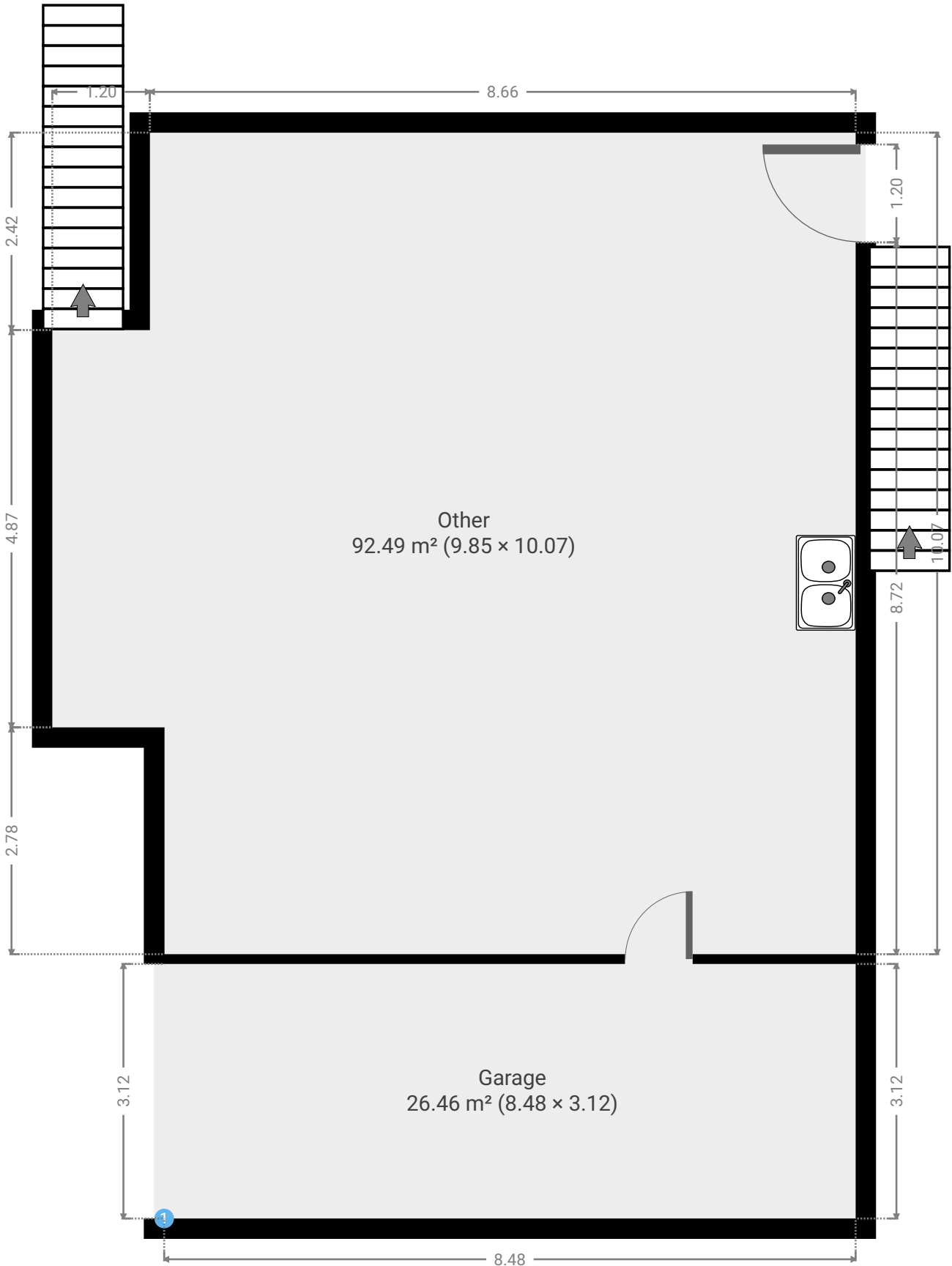
---

**Floors**

2

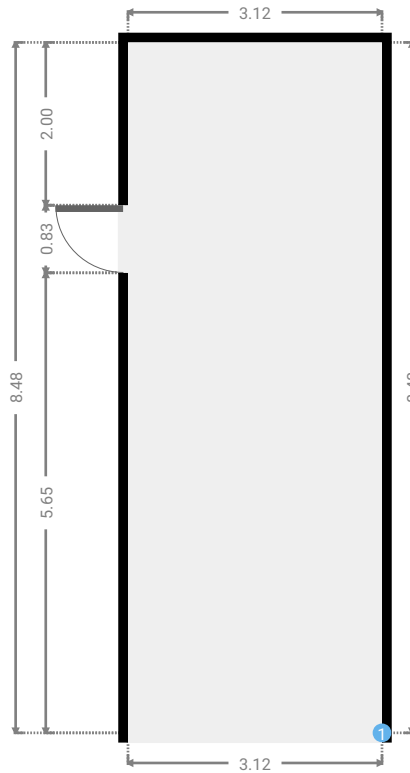
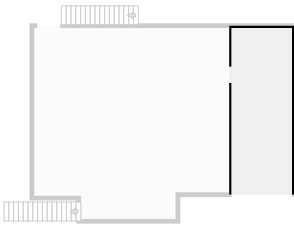
---

▼ Ground Floor



▼ **Garage**  
Ground Floor

WIDTH: 3.12 m • LENGTH: 8.48 m  
AREA: 26.46 m<sup>2</sup> • PERIMETER: 23.20 m



▼ **Garage/Ground Floor**

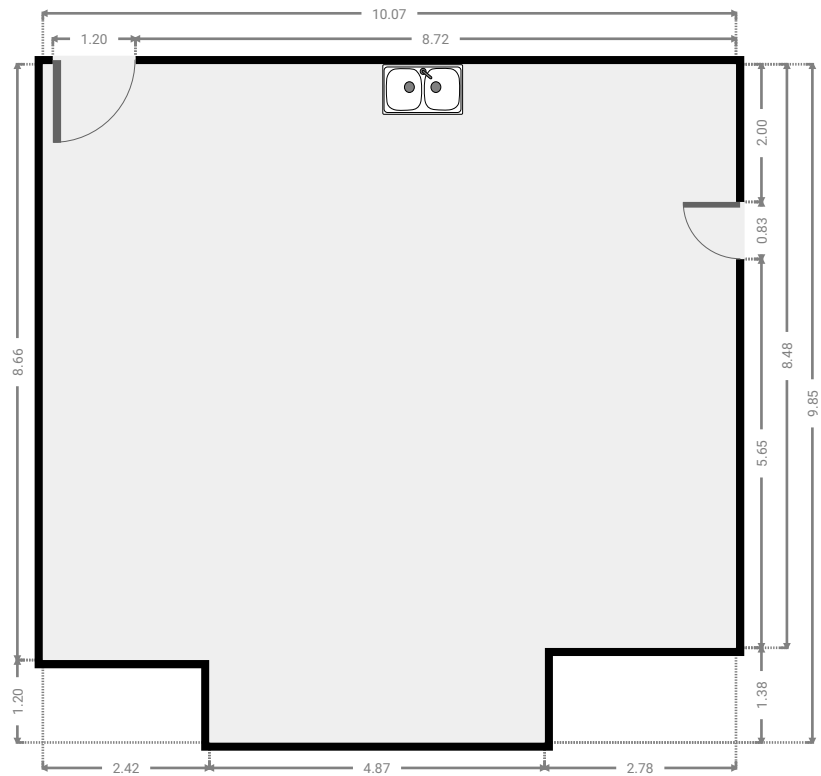
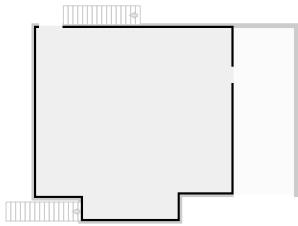
1 **OPENING**

Height  
0.00 m

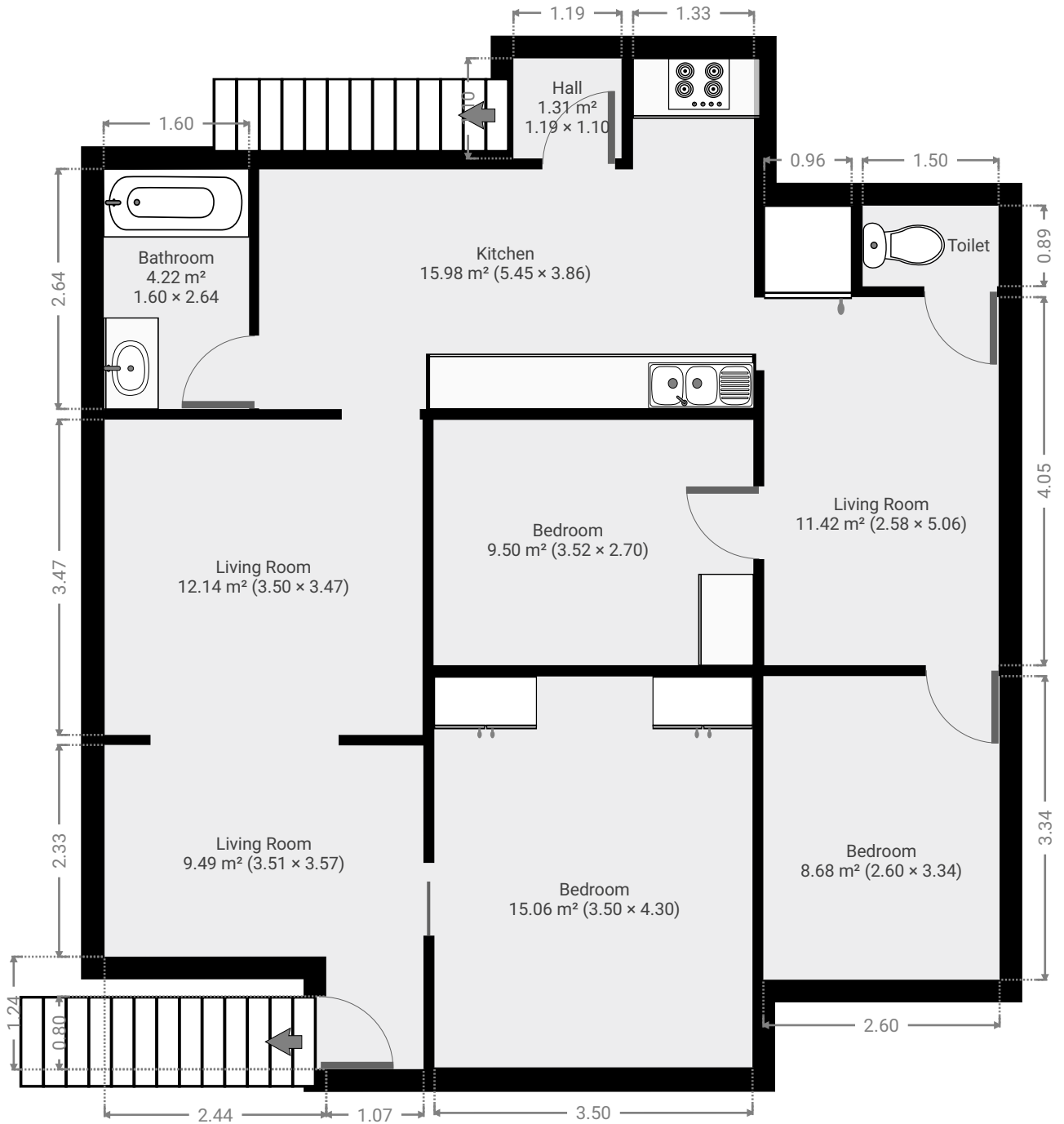


▼ Other  
Ground Floor

WIDTH: 10.07 m • LENGTH: 9.85 m  
AREA: 92.49 m<sup>2</sup> • PERIMETER: 39.84 m

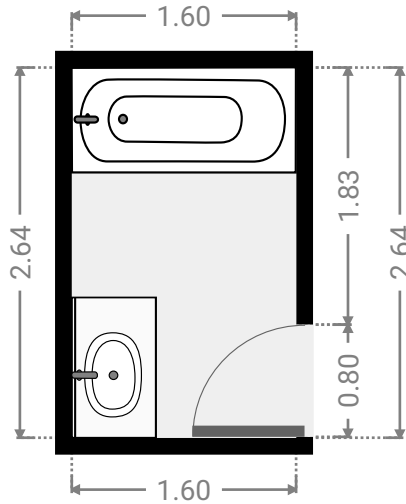
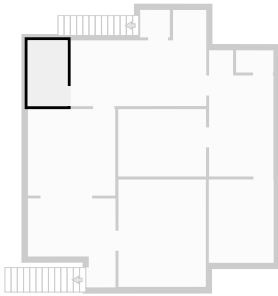


▼ 1st Floor



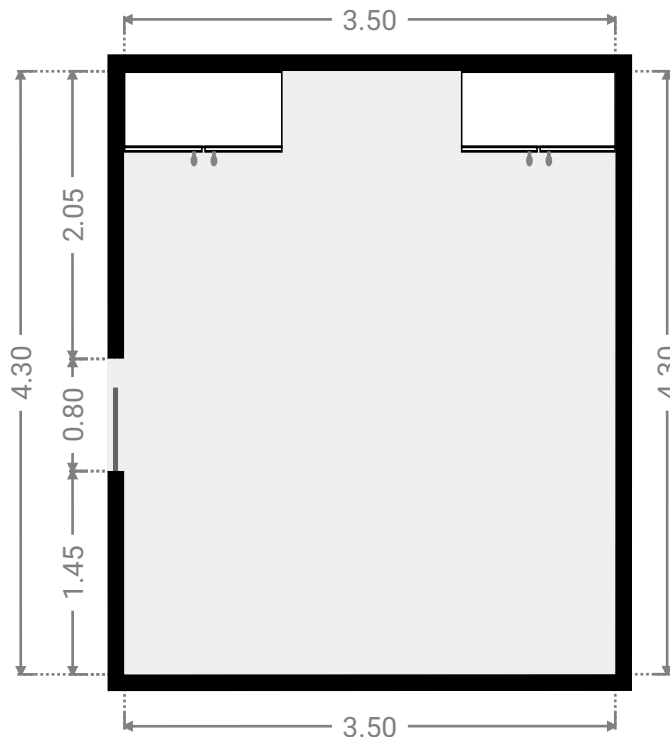
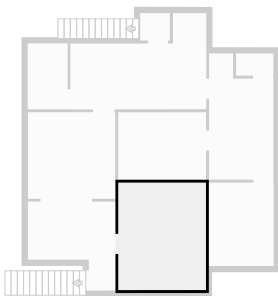
▼ **Bathroom**  
1st Floor

WIDTH: 1.60 m • LENGTH: 2.64 m  
AREA: 4.22 m<sup>2</sup> • PERIMETER: 8.48 m



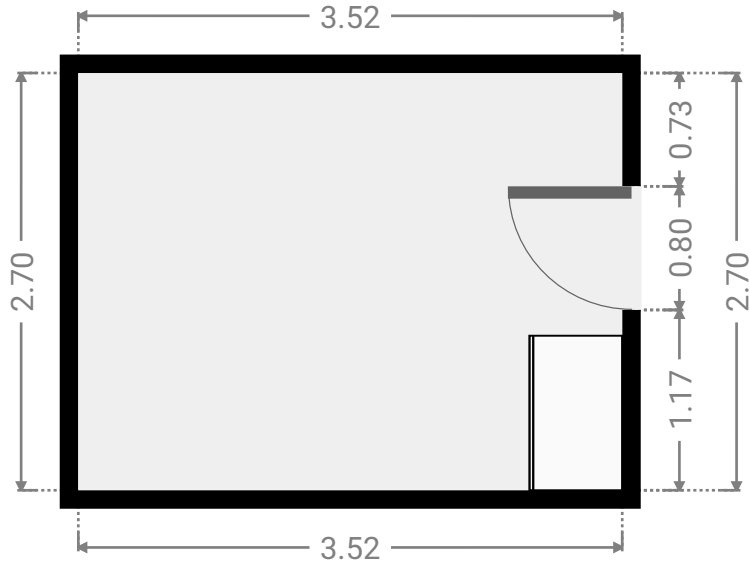
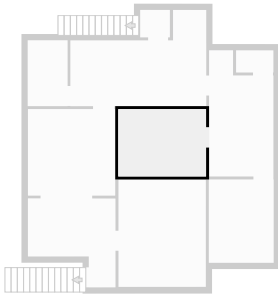
▼ **Bedroom**  
1st Floor

WIDTH: 3.50 m • LENGTH: 4.30 m  
AREA: 15.06 m<sup>2</sup> • PERIMETER: 15.60 m



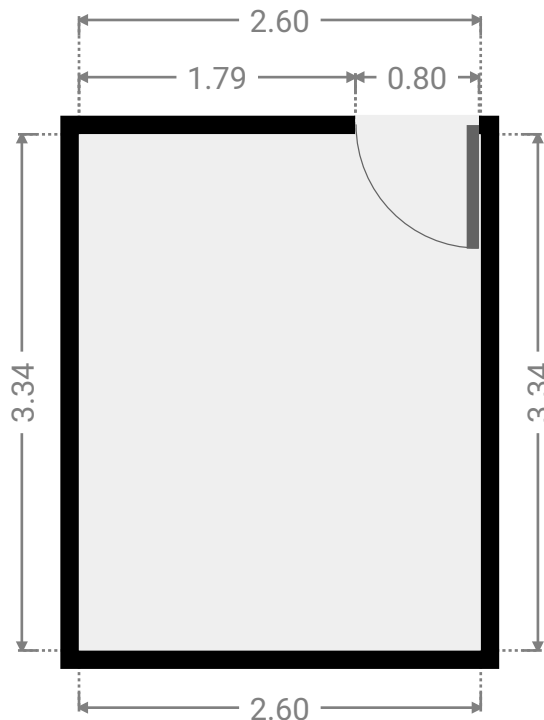
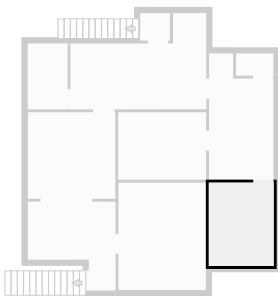
▼ **Bedroom**  
1st Floor

WIDTH: 3.52 m • LENGTH: 2.70 m  
AREA: 9.50 m<sup>2</sup> • PERIMETER: 12.44 m



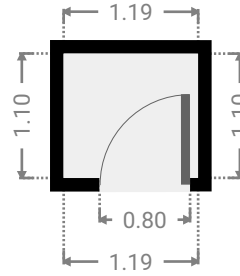
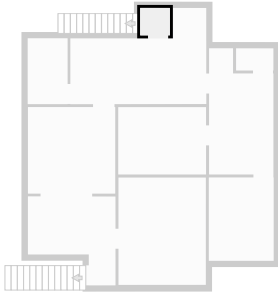
▼ **Bedroom**  
1st Floor

WIDTH: 2.60 m • LENGTH: 3.34 m  
AREA: 8.68 m<sup>2</sup> • PERIMETER: 11.88 m



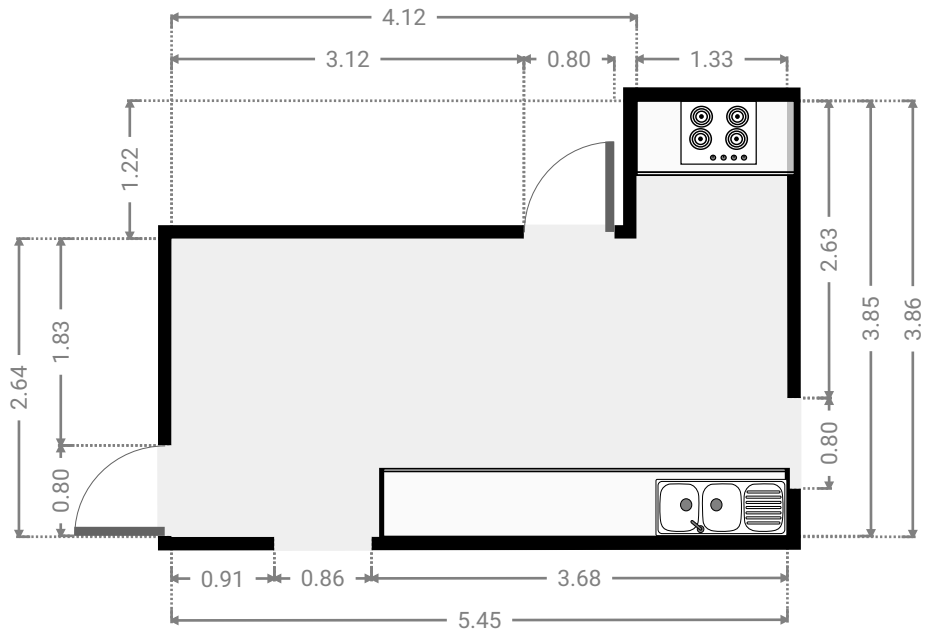
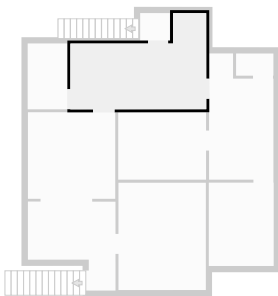
▼ Hall  
1st Floor

WIDTH: 1.19 m • LENGTH: 1.10 m  
AREA: 1.31 m<sup>2</sup> • PERIMETER: 4.58 m



▼ Kitchen  
1st Floor

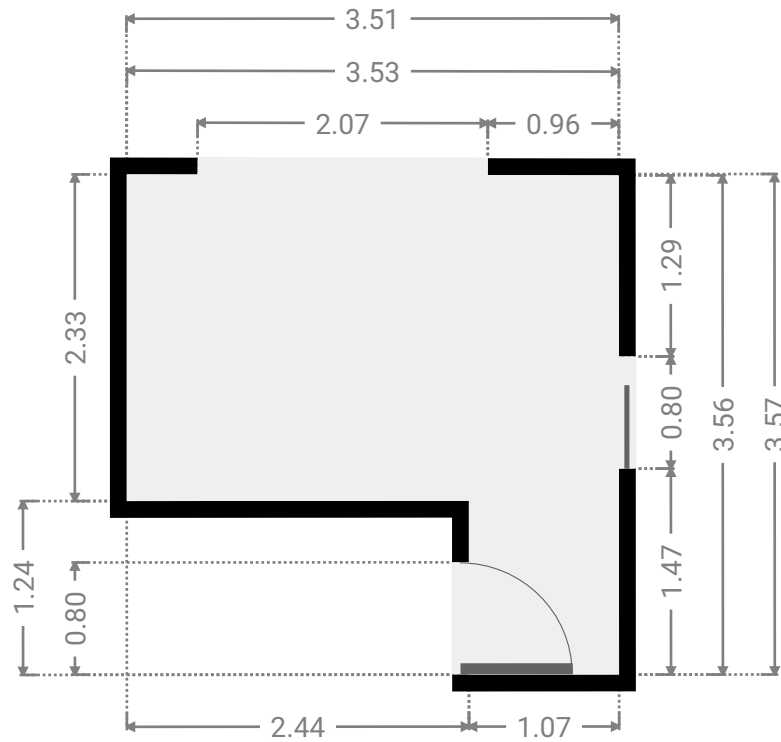
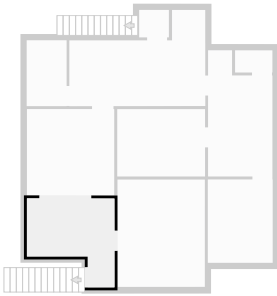
WIDTH: 5.45 m • LENGTH: 3.86 m  
AREA: 15.98 m<sup>2</sup> • PERIMETER: 18.60 m





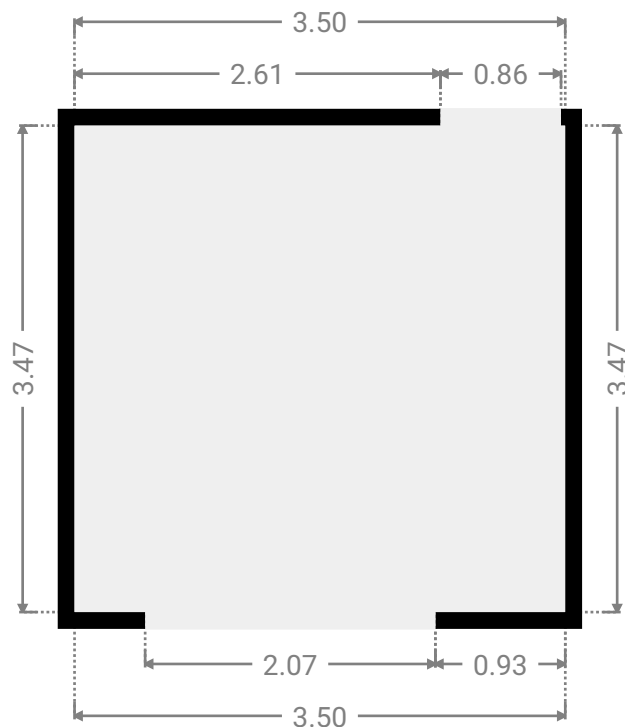
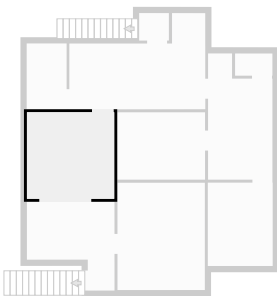
▼ Living Room  
1st Floor

WIDTH: 3.51 m • LENGTH: 3.57 m  
AREA: 9.49 m<sup>2</sup> • PERIMETER: 14.15 m



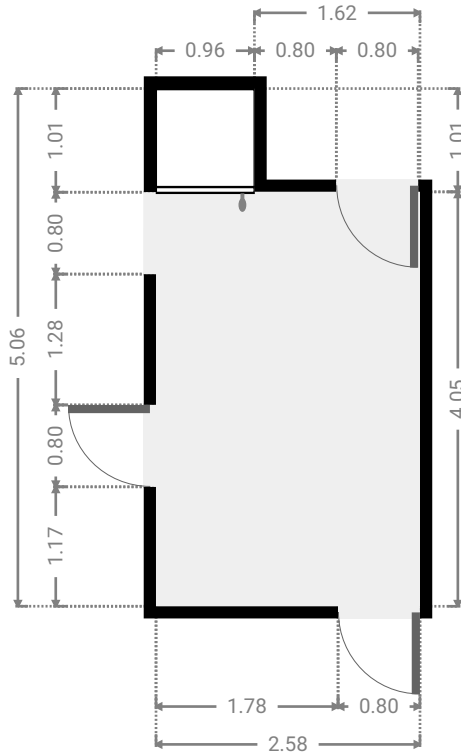
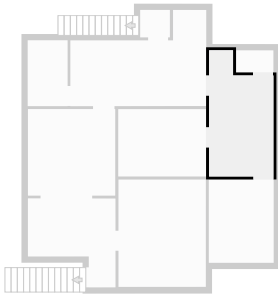
▼ Living Room  
1st Floor

WIDTH: 3.50 m • LENGTH: 3.47 m  
AREA: 12.14 m<sup>2</sup> • PERIMETER: 13.94 m



▼ **Living Room**  
1st Floor

WIDTH: 2.58 m • LENGTH: 5.06 m  
AREA: 11.42 m<sup>2</sup> • PERIMETER: 15.28 m



▼ **Toilet**  
1st Floor

WIDTH: 1.50 m • LENGTH: 0.89 m  
AREA: 1.33 m<sup>2</sup> • PERIMETER: 4.77 m

