

178 Horton STREET

SUBMITTED BY

Ray White Rockhampton Casey
stockers@cqoz.com

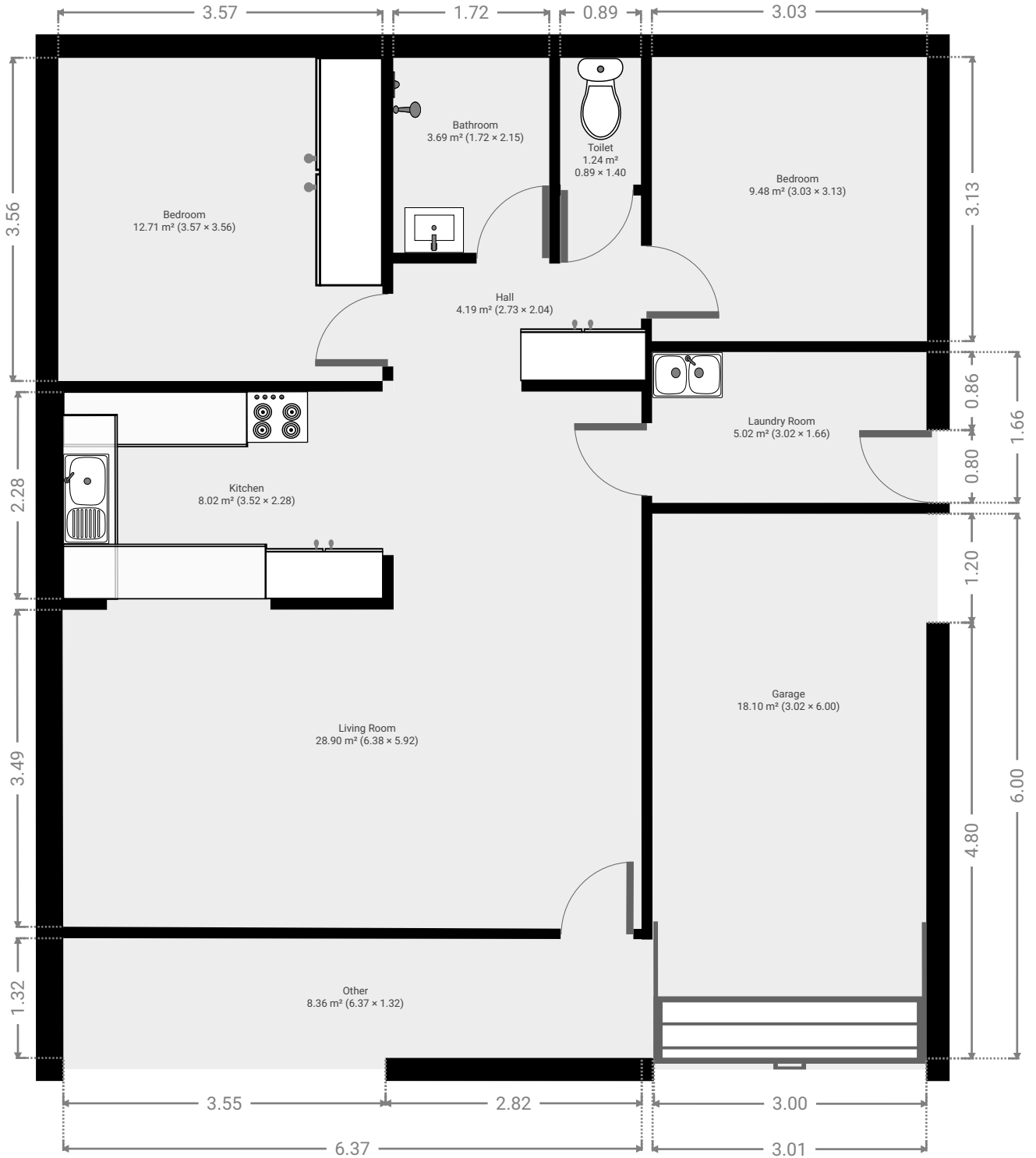
CREATED ON

2022-09-02

Floors

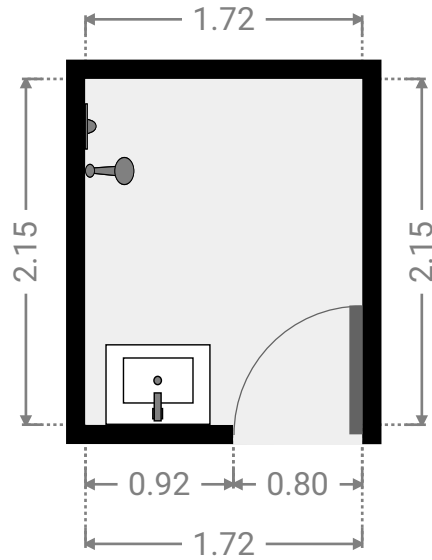
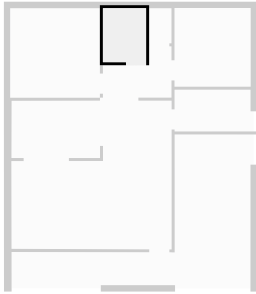
1

▼ Ground Floor



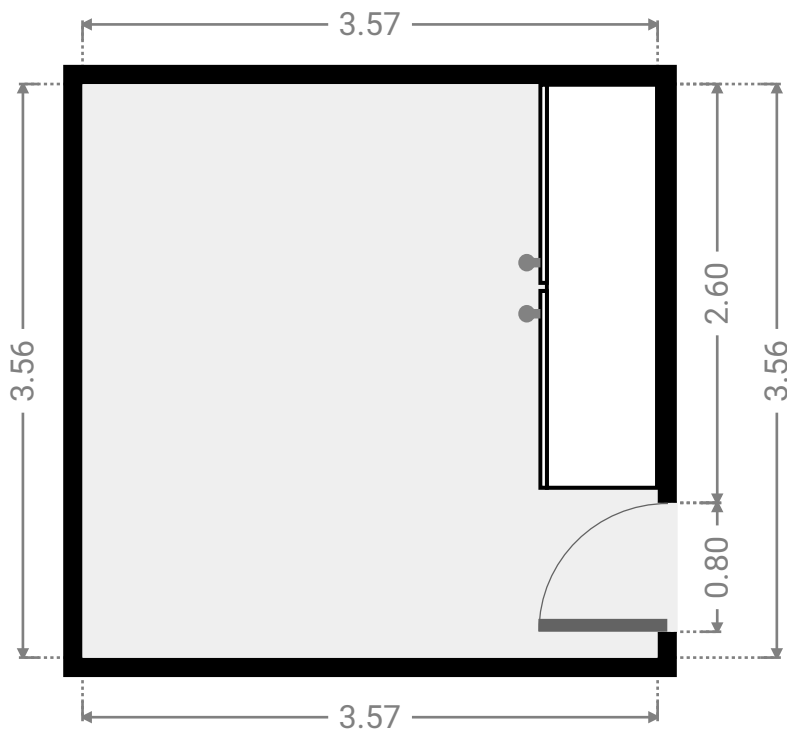
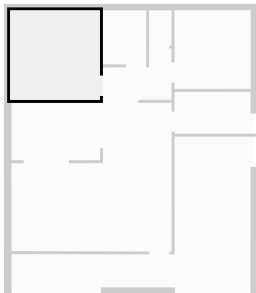
▼ **Bathroom**
Ground Floor

WIDTH: 1.72 m • LENGTH: 2.15 m
AREA: 3.69 m² • PERIMETER: 7.73 m



▼ **Bedroom**
Ground Floor

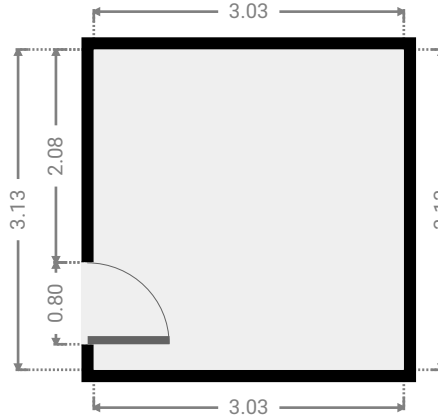
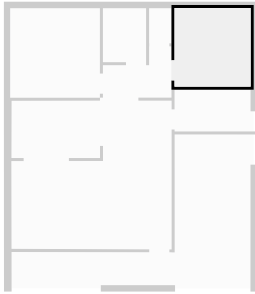
WIDTH: 3.57 m • LENGTH: 3.56 m
AREA: 12.71 m² • PERIMETER: 14.26 m



FLOORS: 1

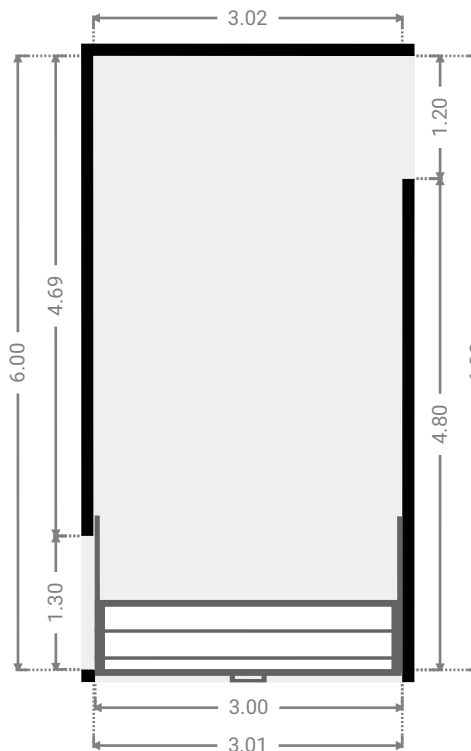
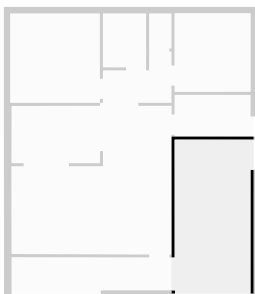
▼ **Bedroom**
Ground Floor

WIDTH: 3.03 m • LENGTH: 3.13 m
AREA: 9.48 m² • PERIMETER: 12.32 m



▼ **Garage**
Ground Floor

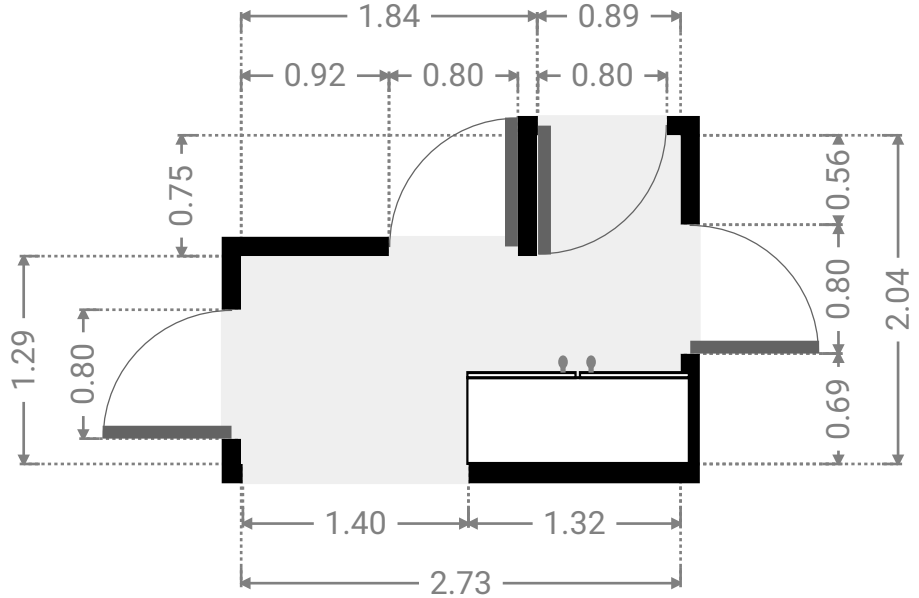
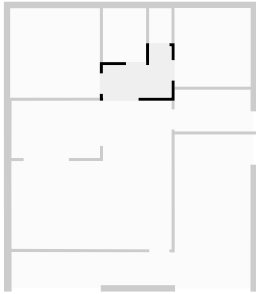
WIDTH: 3.02 m • LENGTH: 6.00 m
AREA: 18.10 m² • PERIMETER: 18.03 m



FLOORS: 1

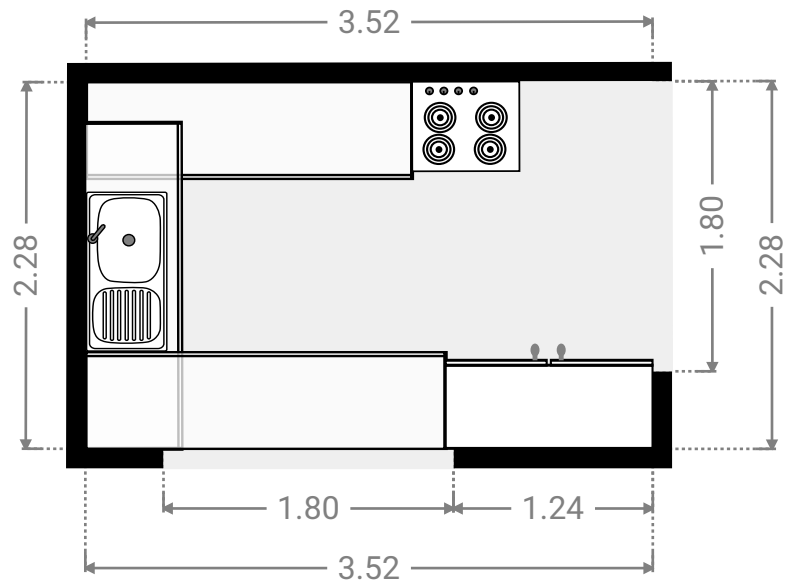
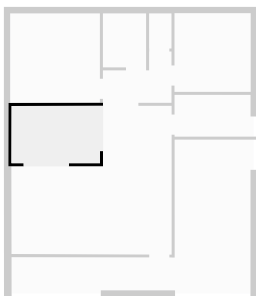
▼ **Hall**
Ground Floor

WIDTH: 2.73 m • LENGTH: 2.04 m
AREA: 4.19 m² • PERIMETER: 9.54 m



▼ **Kitchen**
Ground Floor

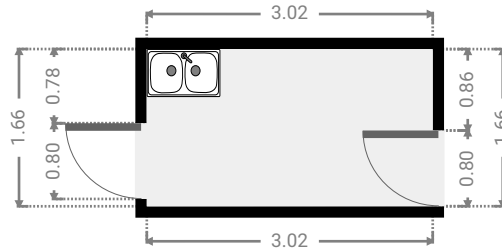
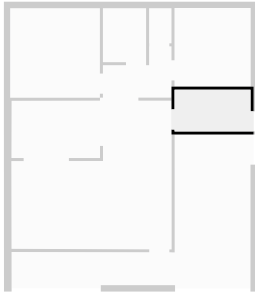
WIDTH: 3.52 m • LENGTH: 2.28 m
AREA: 8.02 m² • PERIMETER: 11.60 m



FLOORS: 1

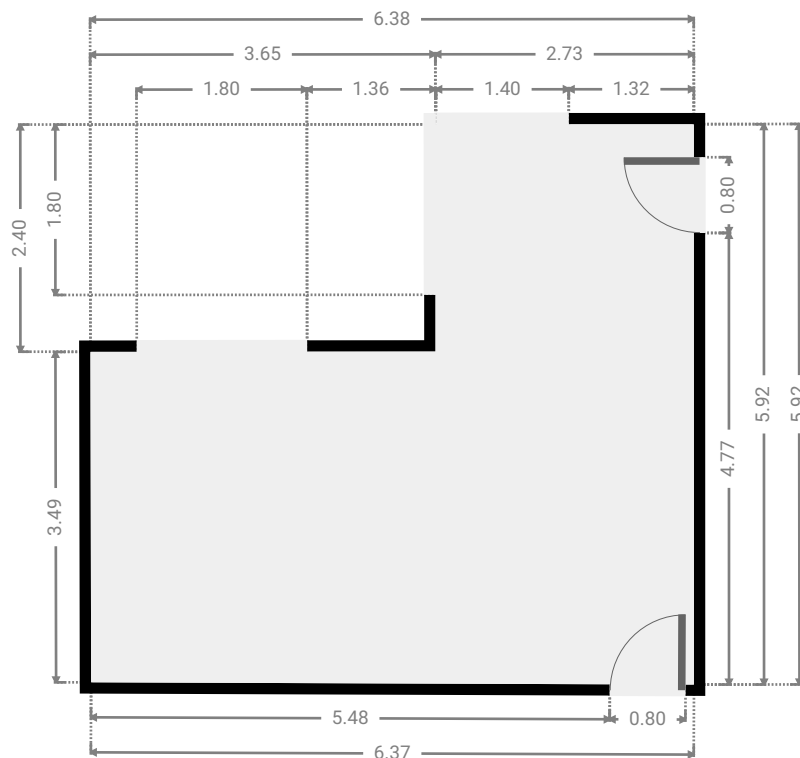
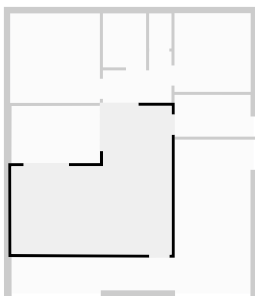
▼ **Laundry Room**
Ground Floor

WIDTH: 3.02 m • LENGTH: 1.66 m
AREA: 5.02 m² • PERIMETER: 9.36 m



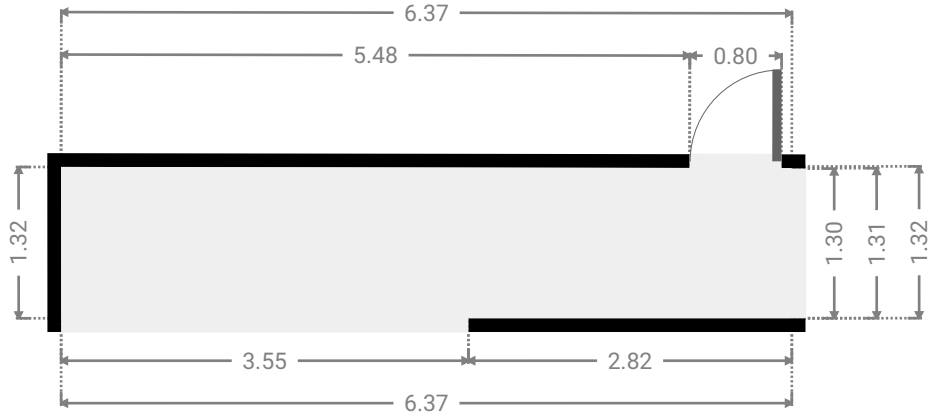
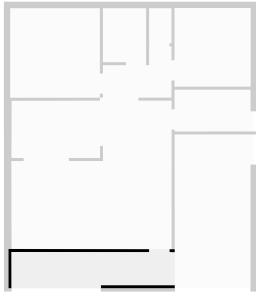
▼ **Living Room**
Ground Floor

WIDTH: 6.38 m • LENGTH: 5.92 m
AREA: 28.90 m² • PERIMETER: 24.56 m



▼ Other
Ground Floor

WIDTH: 6.37 m • LENGTH: 1.32 m
AREA: 8.36 m² • PERIMETER: 15.37 m



▼ Toilet
Ground Floor

WIDTH: 0.89 m • LENGTH: 1.40 m
AREA: 1.24 m² • PERIMETER: 4.57 m

