

176 Horton STREET

SUBMITTED BY

Ray White Rockhampton Casey
stockers@cqoz.com

CREATED ON

2022-09-12

Floors

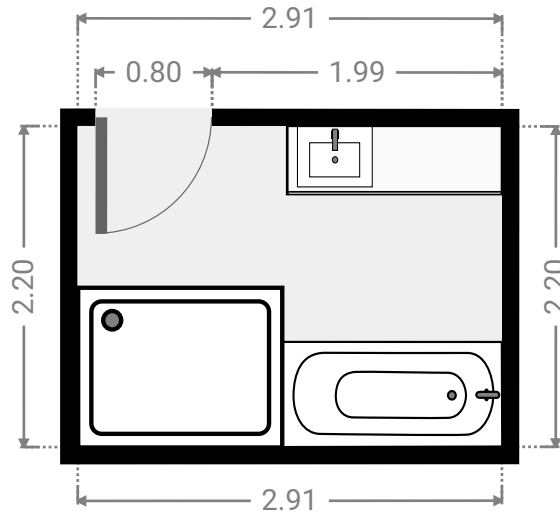
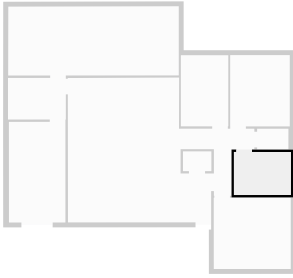
1

▼ Ground Floor



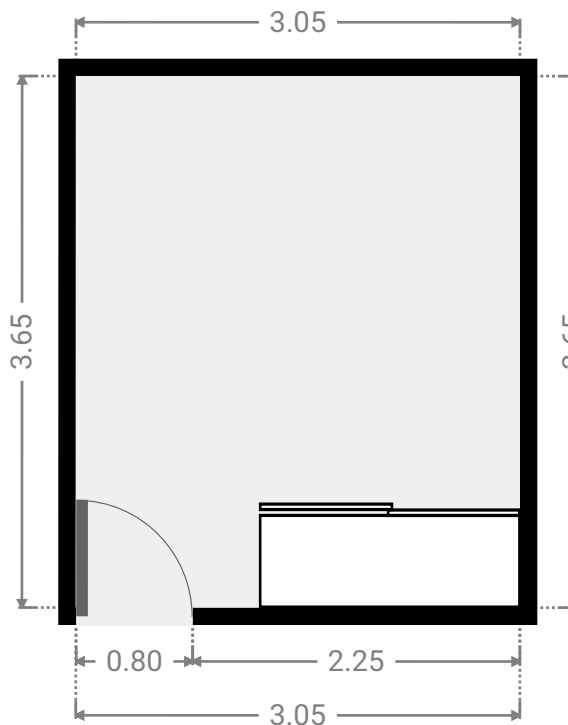
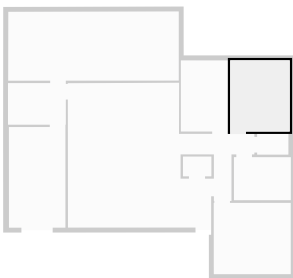
▼ **Bathroom**
Ground Floor

WIDTH: 2.91 m • LENGTH: 2.20 m
AREA: 6.42 m² • PERIMETER: 10.23 m



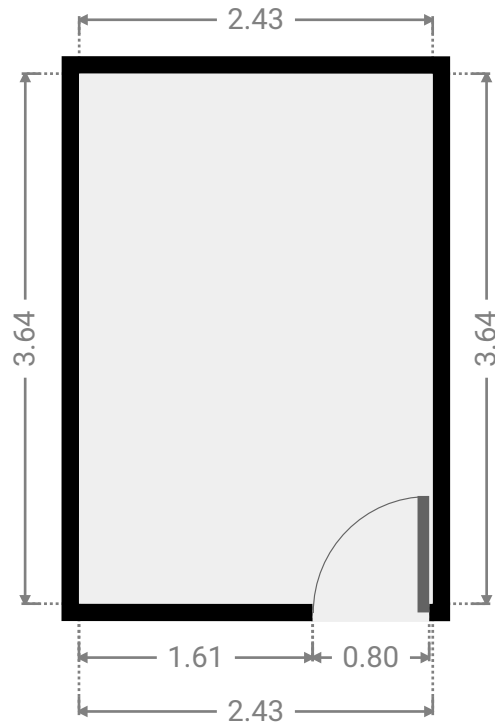
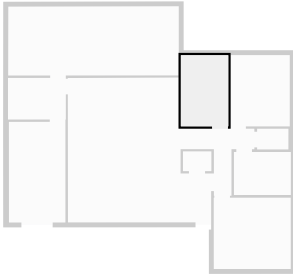
▼ **Bedroom**
Ground Floor

WIDTH: 3.05 m • LENGTH: 3.65 m
AREA: 11.13 m² • PERIMETER: 13.40 m



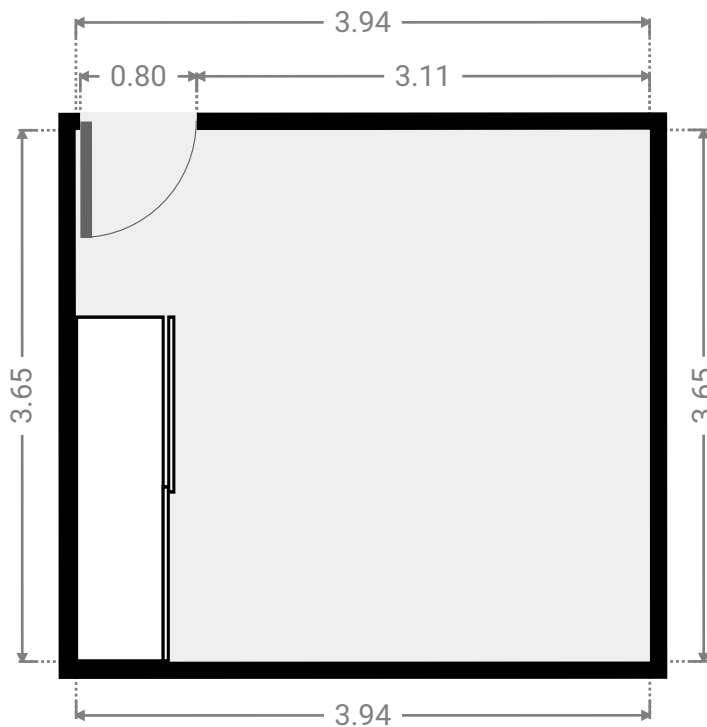
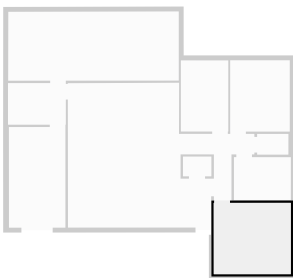
▼ **Bedroom**
Ground Floor

WIDTH: 2.43 m • LENGTH: 3.64 m
AREA: 8.84 m² • PERIMETER: 12.14 m



▼ **Bedroom**
Ground Floor

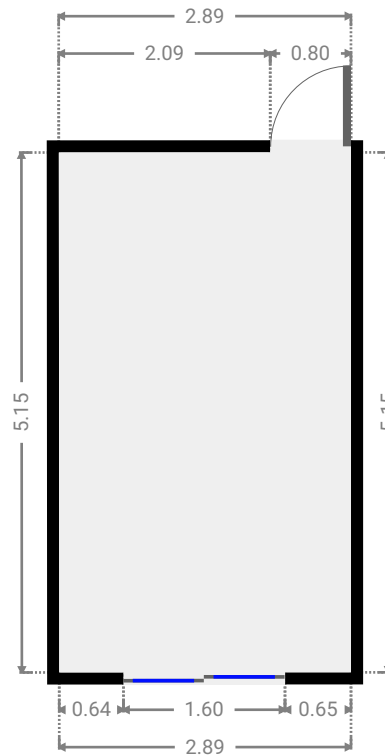
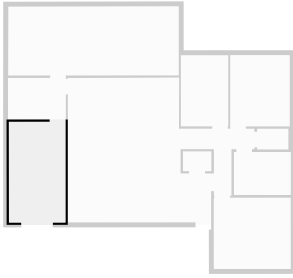
WIDTH: 3.94 m • LENGTH: 3.65 m
AREA: 14.38 m² • PERIMETER: 15.18 m



FLOORS: 1

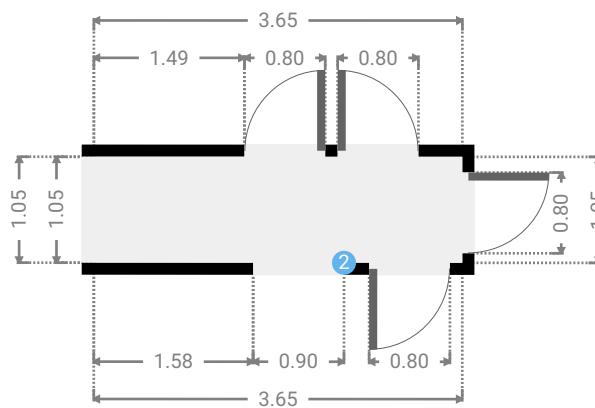
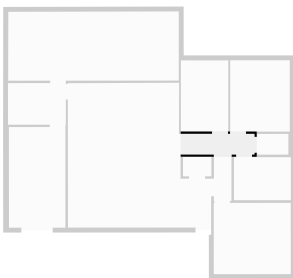
▼ **Garage**
Ground Floor

WIDTH: 2.89 m • LENGTH: 5.15 m
AREA: 14.90 m² • PERIMETER: 16.09 m



▼ **Hall**
Ground Floor

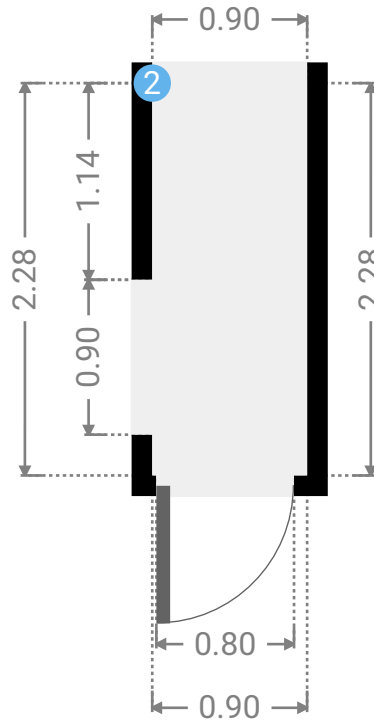
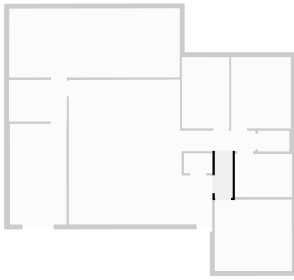
WIDTH: 3.65 m • LENGTH: 1.05 m
AREA: 3.83 m² • PERIMETER: 9.40 m



FLOORS: 1

▼ Hall
Ground Floor

WIDTH: 0.90 m • LENGTH: 2.28 m
AREA: 2.05 m² • PERIMETER: 6.36 m



▼ Hall/Ground Floor

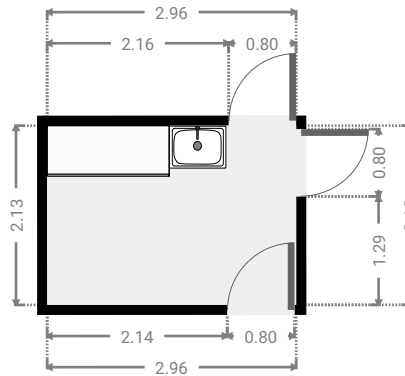
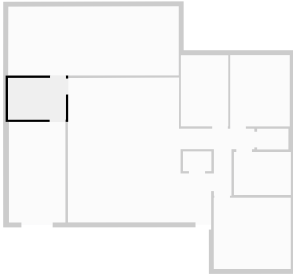
2 OPENING

Height
0.00 m



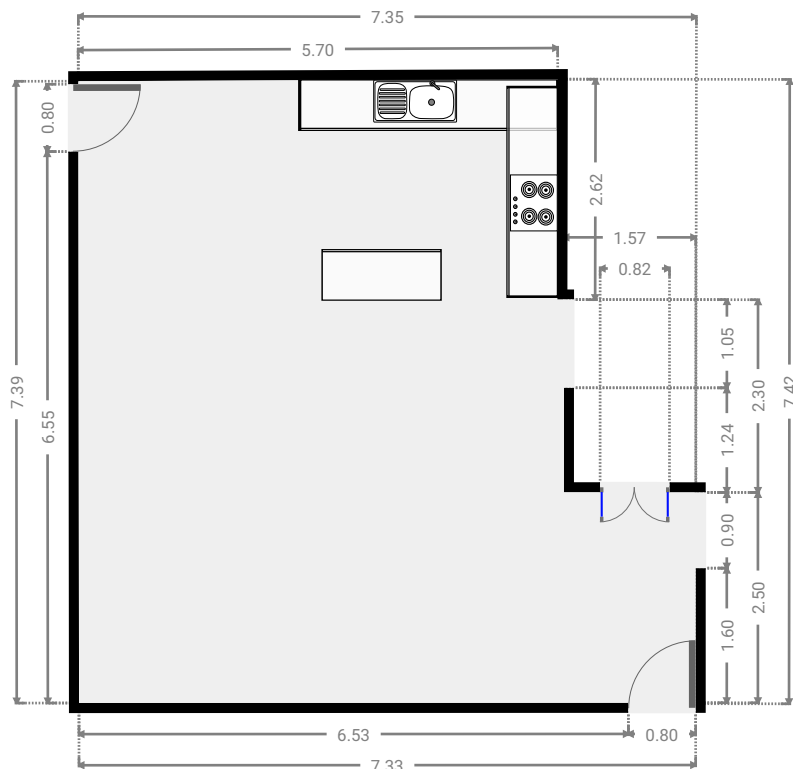
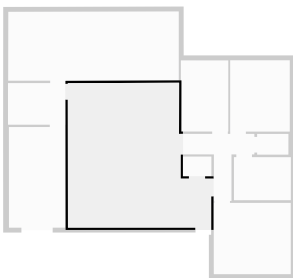
▼ **Laundry Room**
Ground Floor

WIDTH: 2.96 m • LENGTH: 2.13 m
AREA: 6.30 m² • PERIMETER: 10.18 m



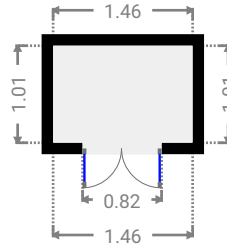
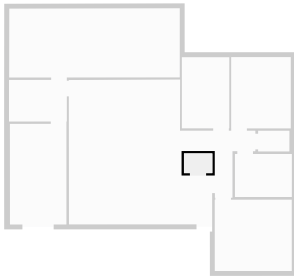
▼ **Living Room**
Ground Floor

WIDTH: 7.35 m • LENGTH: 7.42 m
AREA: 46.41 m² • PERIMETER: 29.48 m



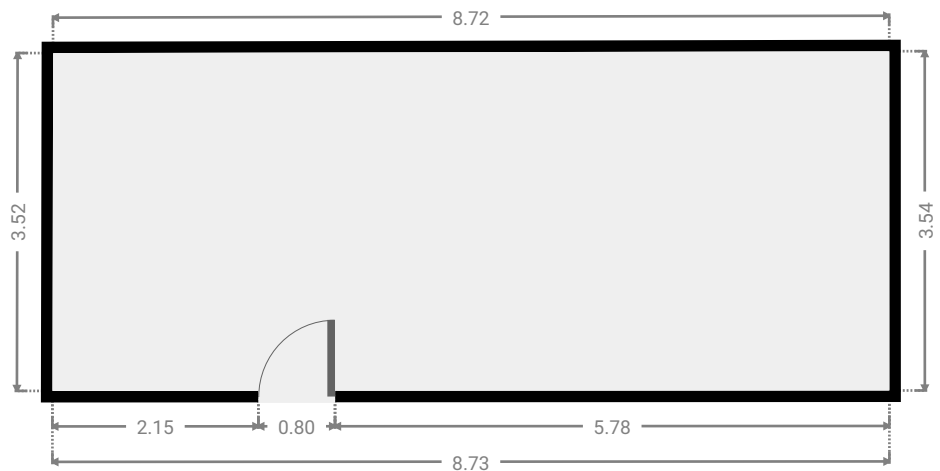
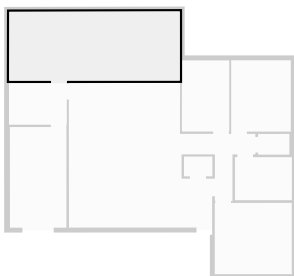
▼ **Closet**
Ground Floor

WIDTH: 1.46 m • LENGTH: 1.01 m
AREA: 1.47 m² • PERIMETER: 4.94 m



▼ **Other**
Ground Floor

WIDTH: 8.73 m • LENGTH: 3.54 m
AREA: 30.83 m² • PERIMETER: 24.52 m



▼ Toilet
Ground Floor

WIDTH: 1.60 m • LENGTH: 1.06 m
AREA: 1.70 m² • PERIMETER: 5.32 m

