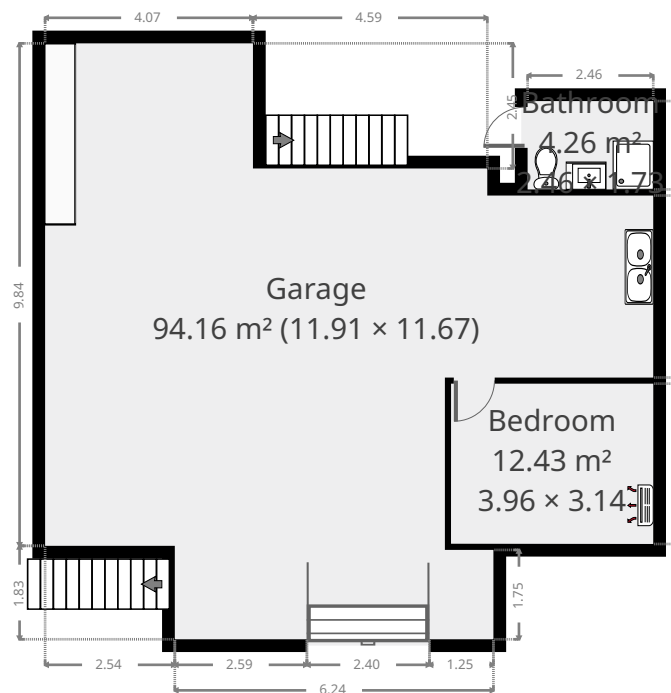
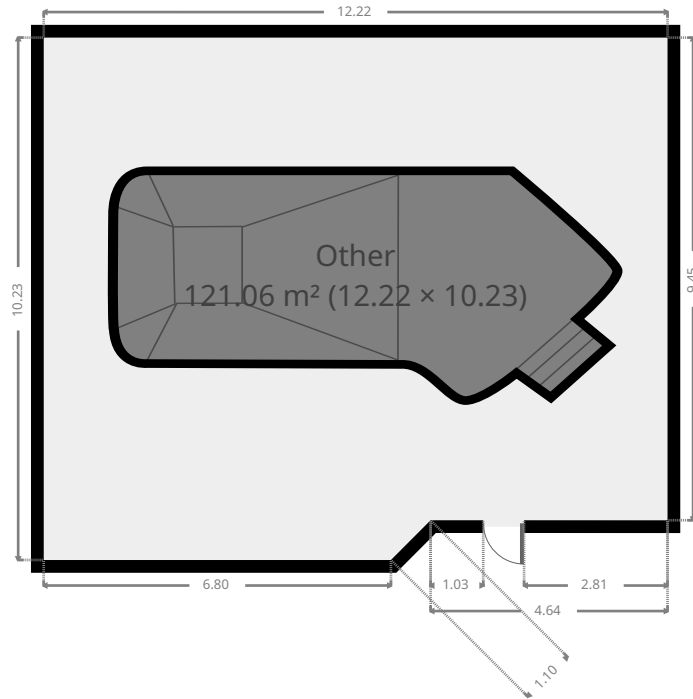


# 175 Stamford Street

## Ground Floor



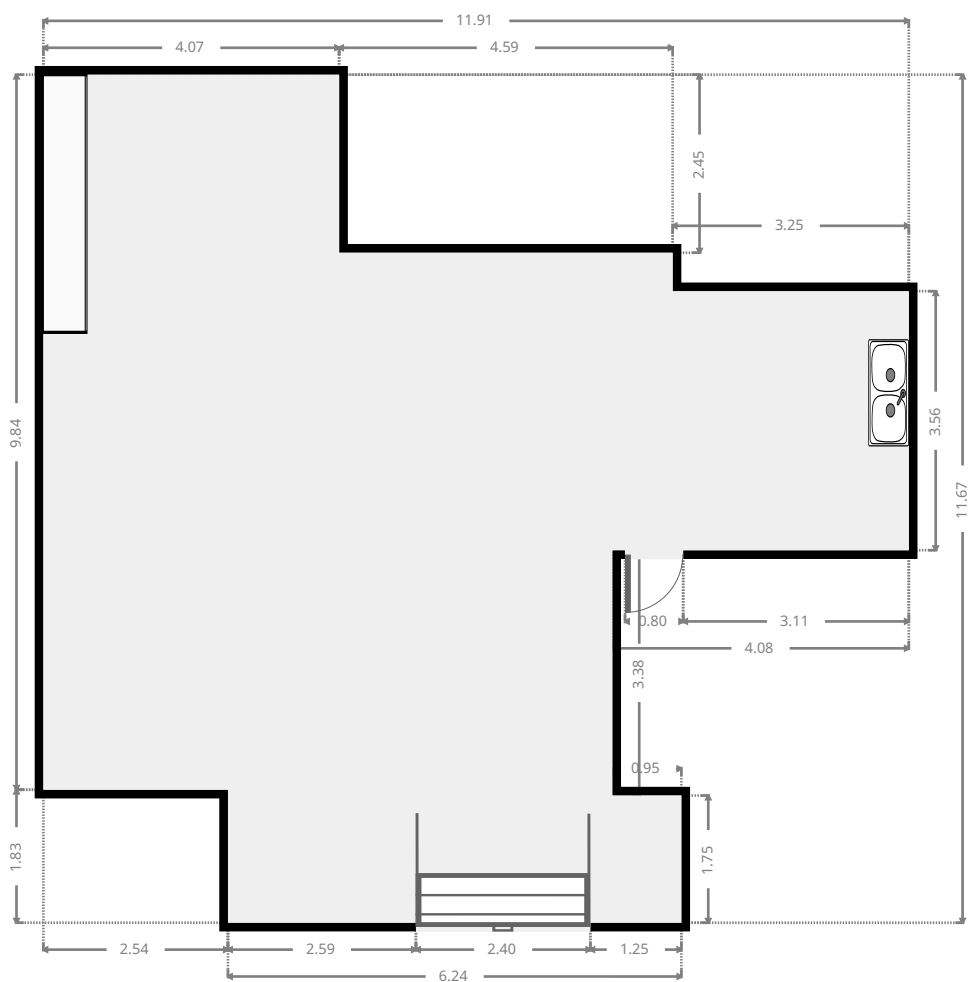
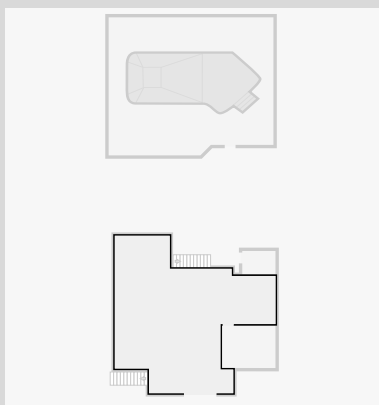
THIS FLOORPLAN IS PROVIDED WITHOUT WARRANTY OF ANY KIND. SENSOPIA DISCLAIMS ANY WARRANTY INCLUDING, WITHOUT LIMITATION, SATISFACTORY QUALITY OR ACCURACY OF DIMENSIONS.



# 175 Stamford Street

## Garage

Width: 11.67 m  
Length: 11.91 m  
Area: 94.16 m<sup>2</sup>  
Perimeter: 49.06 m



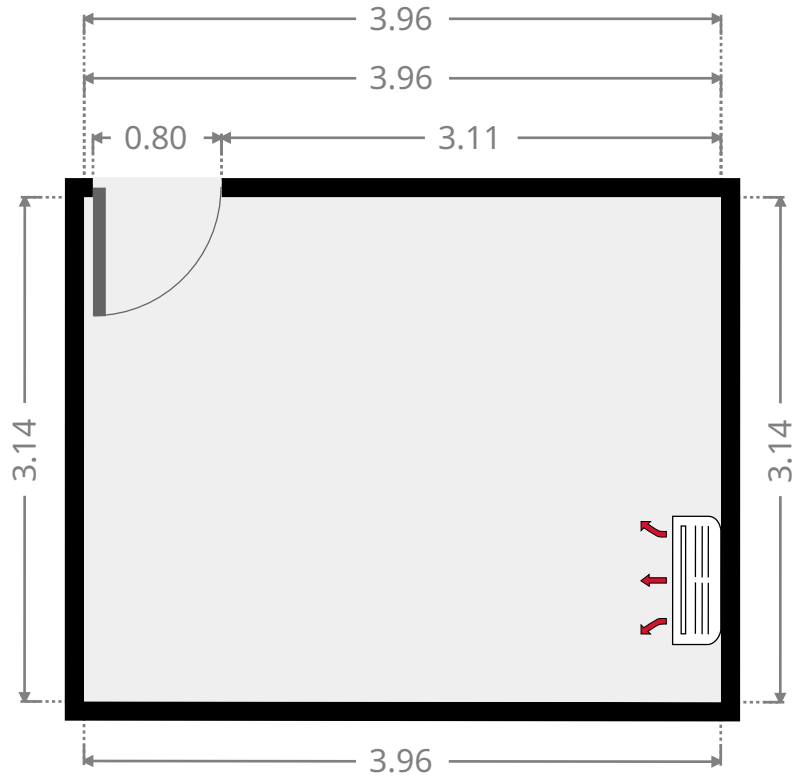
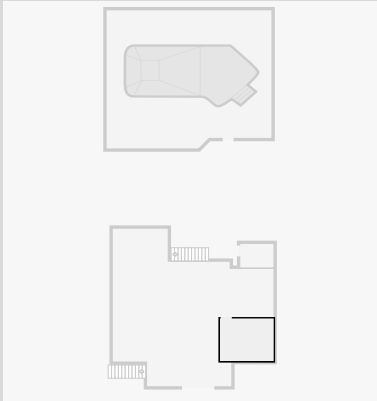
THIS FLOORPLAN IS PROVIDED WITHOUT WARRANTY OF ANY KIND. SENSOPIA DISCLAIMS ANY WARRANTY INCLUDING, WITHOUT LIMITATION, SATISFACTORY QUALITY OR ACCURACY OF DIMENSIONS.



# 175 Stamford Street

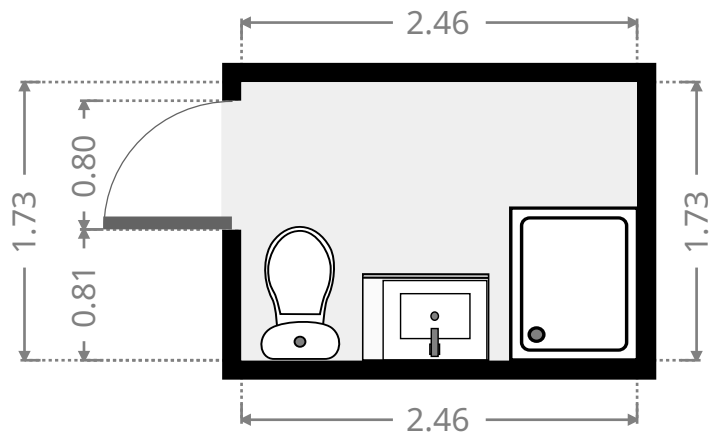
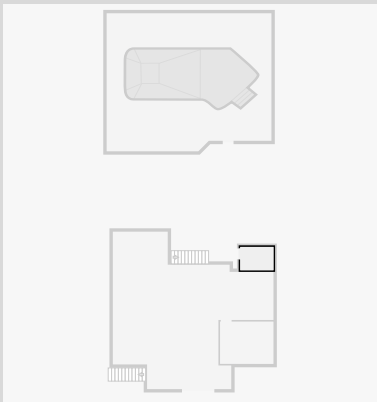
## Bedroom

Width: 3.14 m  
 Length: 3.96 m  
 Area: 12.43 m<sup>2</sup>  
 Perimeter: 14.20 m

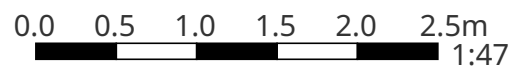


## Bathroom

Width: 1.73 m  
 Length: 2.46 m  
 Area: 4.26 m<sup>2</sup>  
 Perimeter: 8.38 m



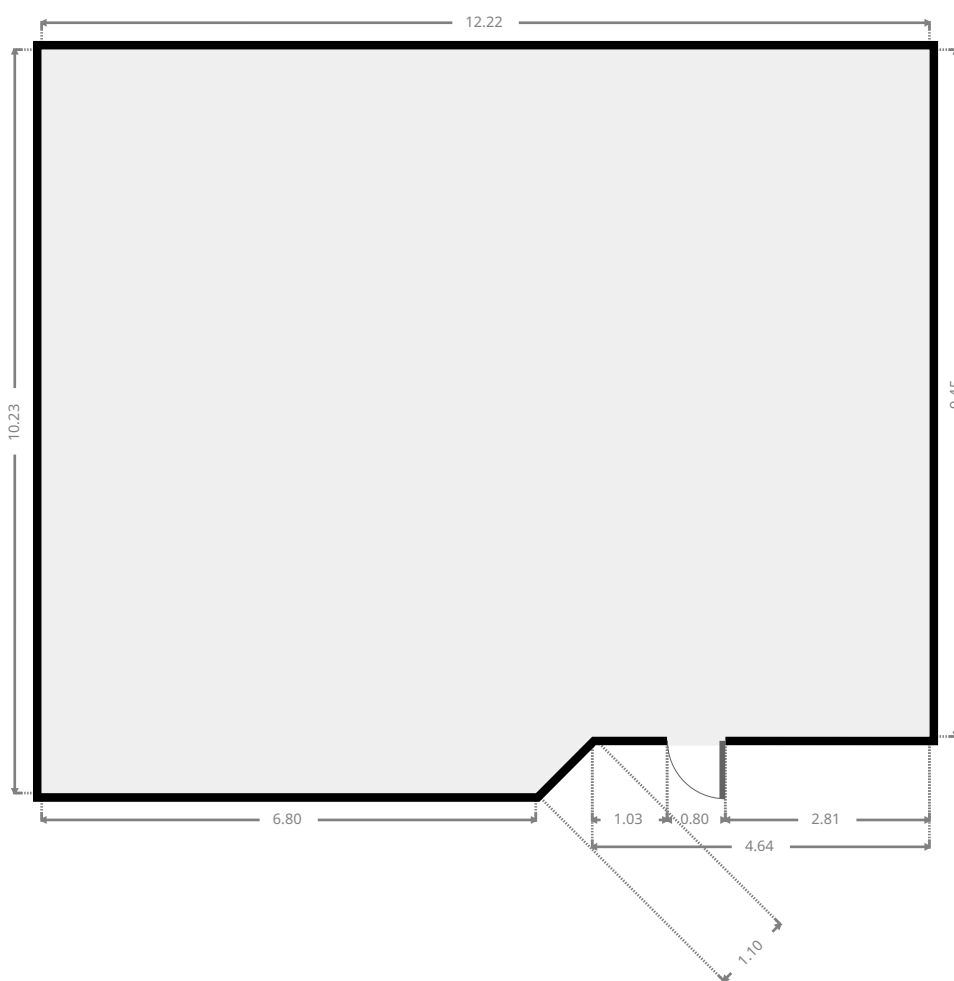
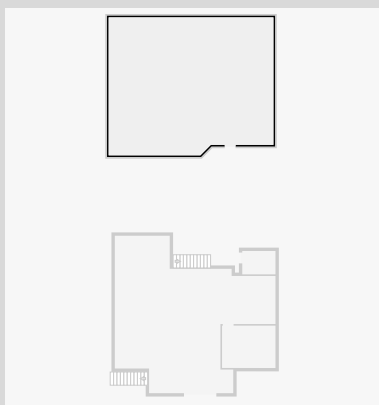
THIS FLOORPLAN IS PROVIDED WITHOUT WARRANTY OF ANY KIND. SENSOPIA DISCLAIMS ANY WARRANTY INCLUDING, WITHOUT LIMITATION, SATISFACTORY QUALITY OR ACCURACY OF DIMENSIONS.



# 175 Stamford Street

## Other

Width: 10.23 m  
Length: 12.22 m  
Area: 121.06 m<sup>2</sup>  
Perimeter: 44.44 m



THIS FLOORPLAN IS PROVIDED WITHOUT WARRANTY OF ANY KIND. SENSOPIA DISCLAIMS ANY WARRANTY INCLUDING, WITHOUT LIMITATION, SATISFACTORY QUALITY OR ACCURACY OF DIMENSIONS.



# 175 Stamford Street

## 1st Floor



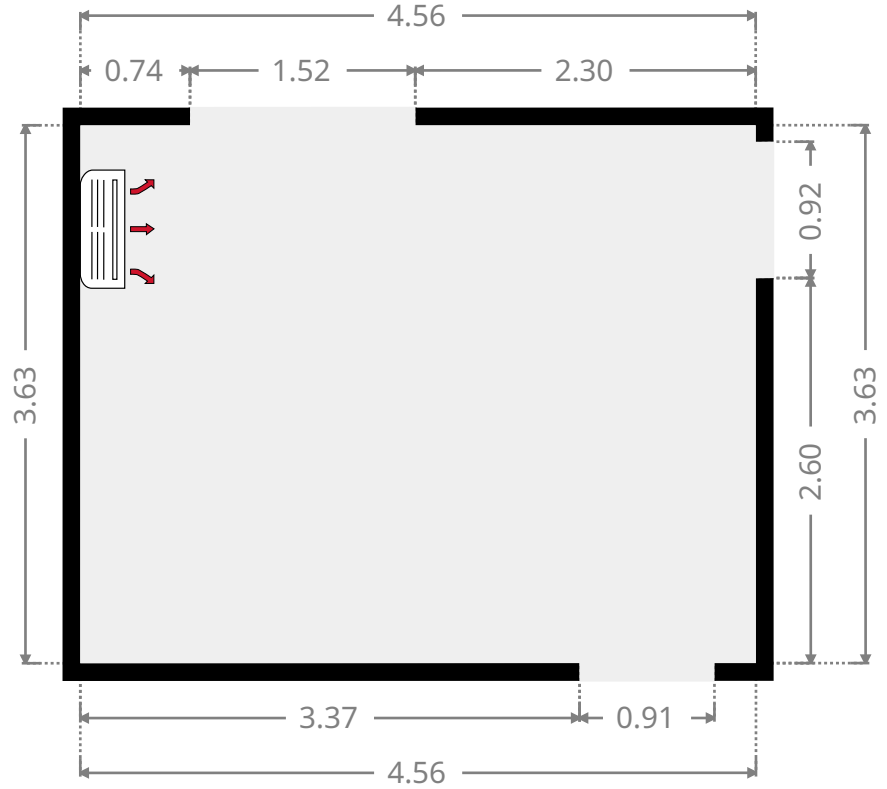
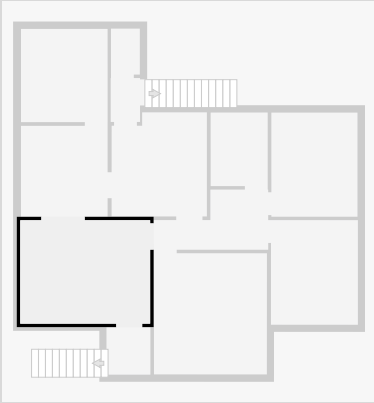
THIS FLOORPLAN IS PROVIDED WITHOUT WARRANTY OF ANY KIND. SENSOPIA DISCLAIMS ANY WARRANTY INCLUDING, WITHOUT LIMITATION, SATISFACTORY QUALITY OR ACCURACY OF DIMENSIONS.



# 175 Stamford Street

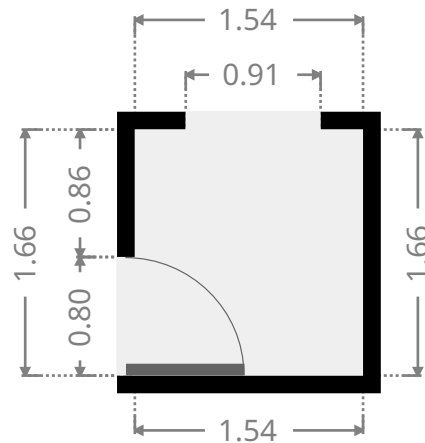
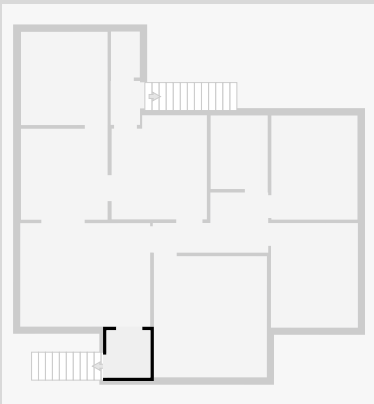
## Living Room

Width: 3.63 m  
 Length: 4.56 m  
 Area: 16.55 m<sup>2</sup>  
 Perimeter: 16.38 m

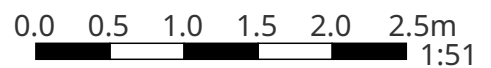


## Hall

Width: 1.54 m  
 Length: 1.66 m  
 Area: 2.56 m<sup>2</sup>  
 Perimeter: 6.40 m



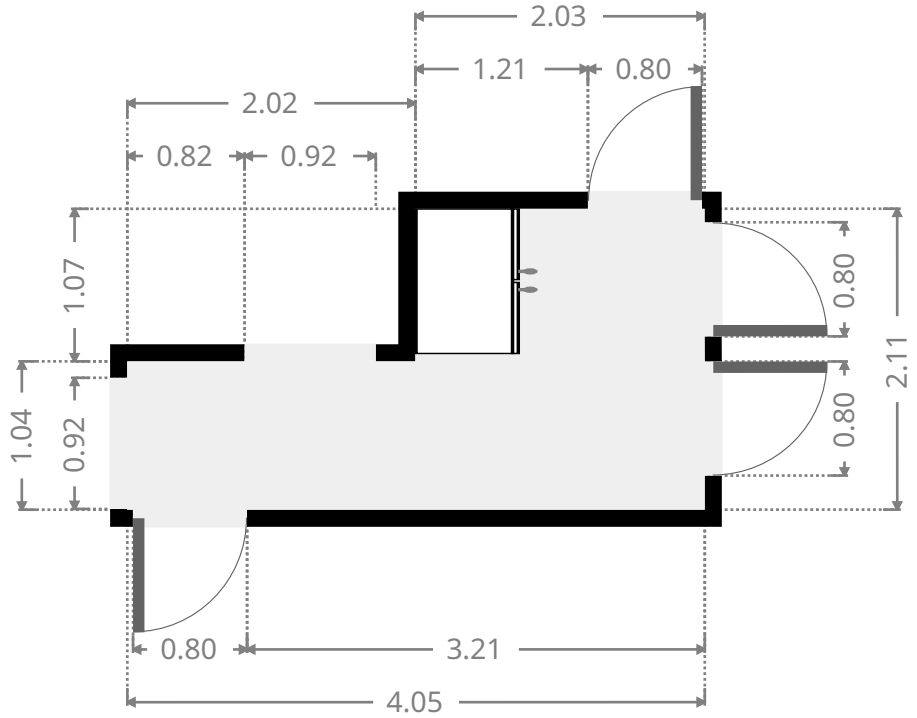
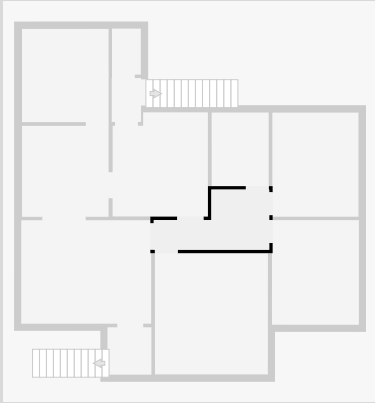
THIS FLOORPLAN IS PROVIDED WITHOUT WARRANTY OF ANY KIND. SENSOPIA DISCLAIMS ANY WARRANTY INCLUDING, WITHOUT LIMITATION, SATISFACTORY QUALITY OR ACCURACY OF DIMENSIONS.



# 175 Stamford Street

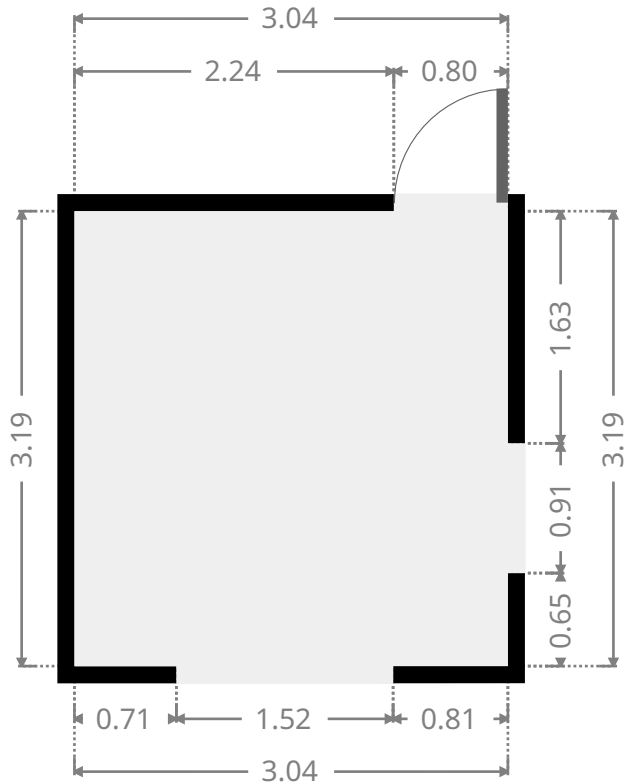
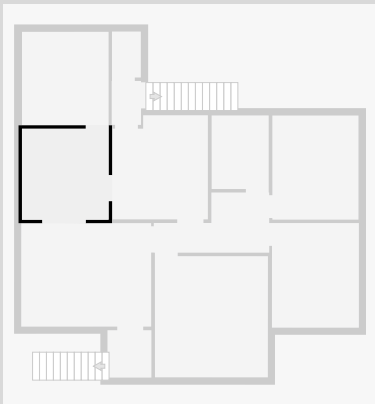
## Hall

Width: 2.11 m  
 Length: 4.05 m  
 Area: 6.38 m<sup>2</sup>  
 Perimeter: 12.32 m

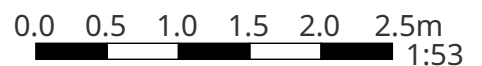


## Dining Room

Width: 3.04 m  
 Length: 3.19 m  
 Area: 9.70 m<sup>2</sup>  
 Perimeter: 12.46 m



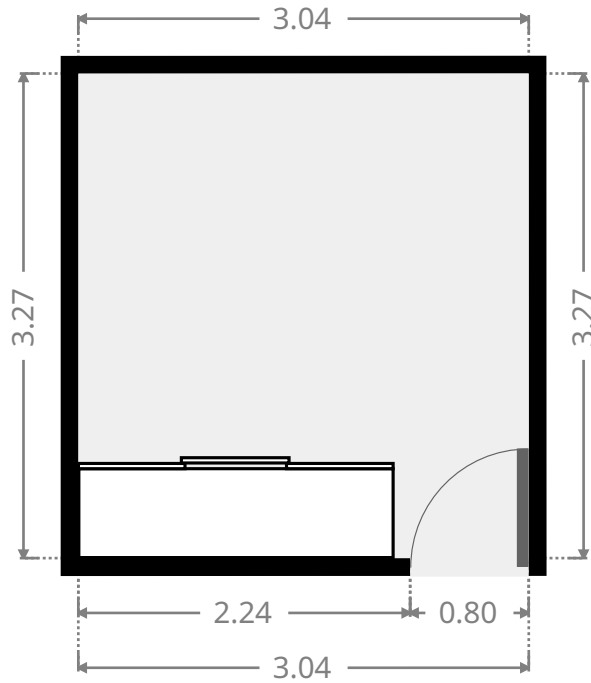
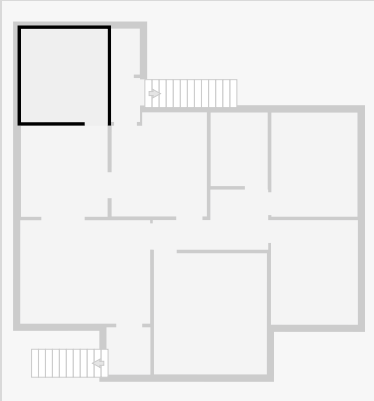
THIS FLOORPLAN IS PROVIDED WITHOUT WARRANTY OF ANY KIND. SENSOPIA DISCLAIMS ANY WARRANTY INCLUDING, WITHOUT LIMITATION, SATISFACTORY QUALITY OR ACCURACY OF DIMENSIONS.



# 175 Stamford Street

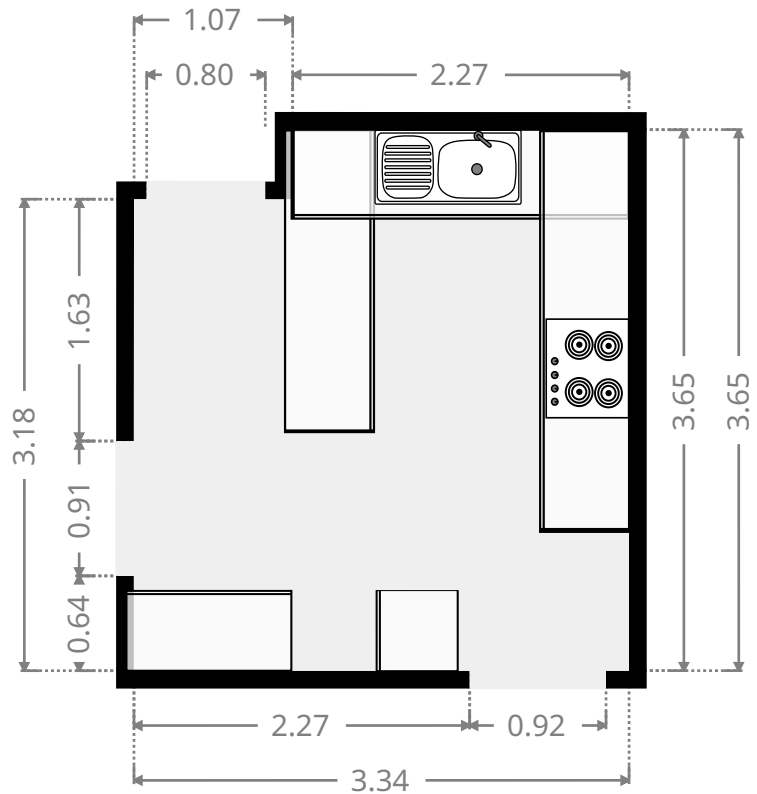
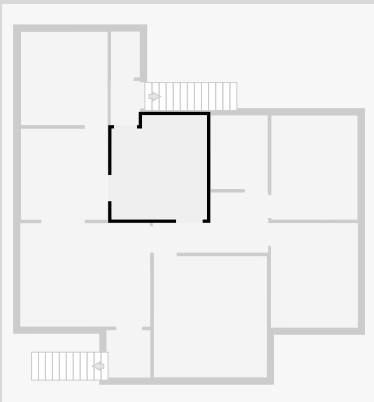
## Bedroom

Width: 3.04 m  
 Length: 3.27 m  
 Area: 9.94 m<sup>2</sup>  
 Perimeter: 12.62 m

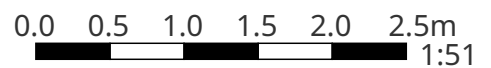


## Kitchen

Width: 3.34 m  
 Length: 3.65 m  
 Area: 11.69 m<sup>2</sup>  
 Perimeter: 13.98 m



THIS FLOORPLAN IS PROVIDED WITHOUT WARRANTY OF ANY KIND. SENSOPIA DISCLAIMS ANY WARRANTY INCLUDING, WITHOUT LIMITATION, SATISFACTORY QUALITY OR ACCURACY OF DIMENSIONS.

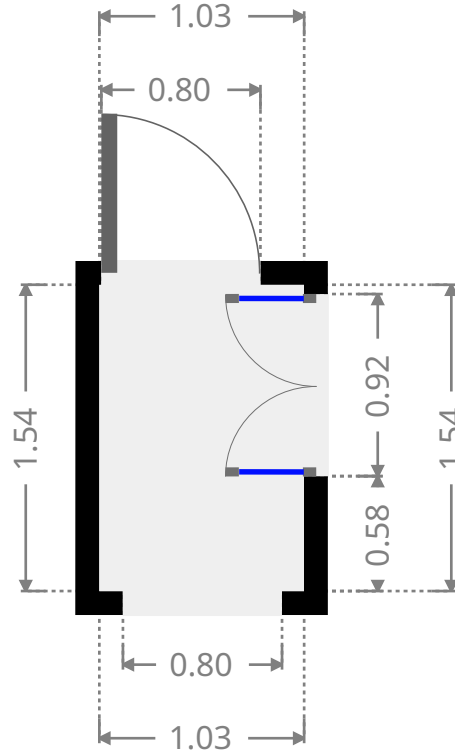
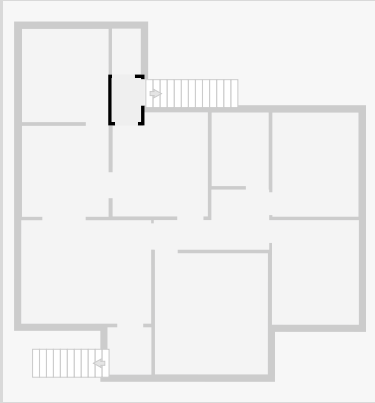




# 175 Stamford Street

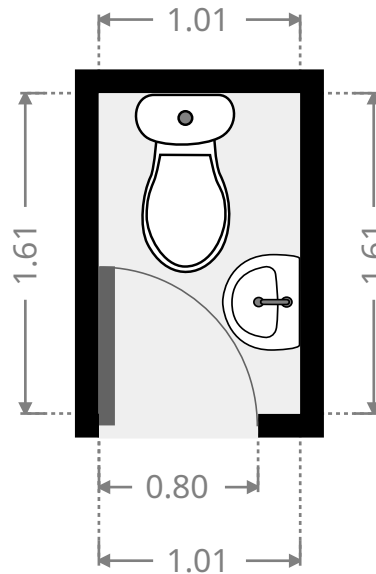
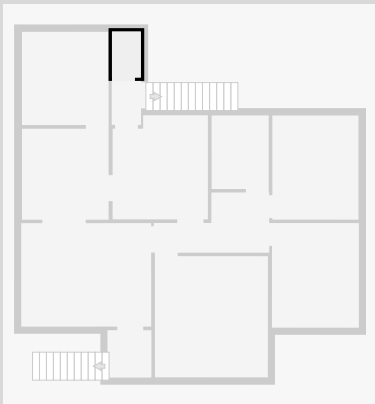
## Hall

Width: 1.03 m  
Length: 1.54 m  
Area: 1.59 m<sup>2</sup>  
Perimeter: 5.14 m



## Toilet / Half Bath

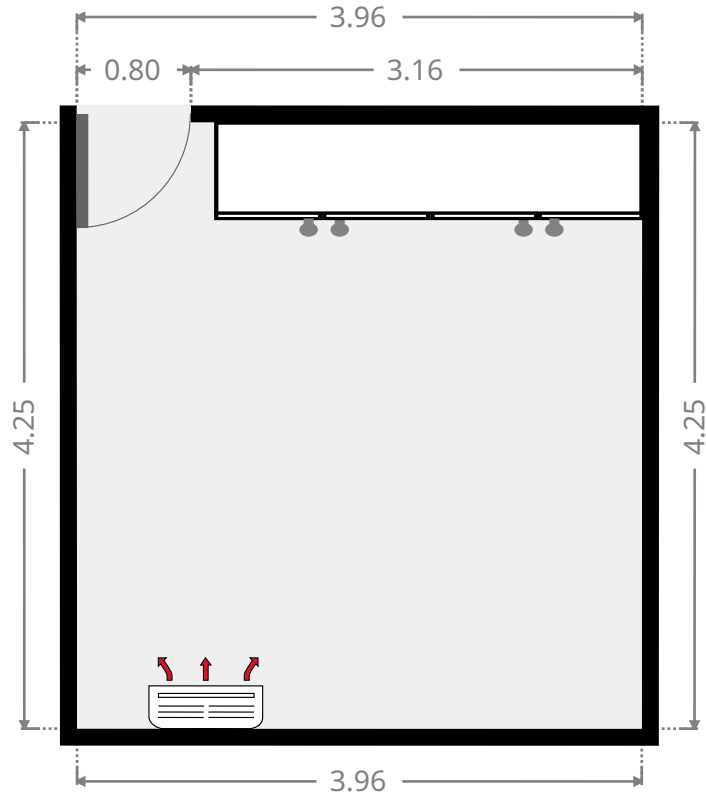
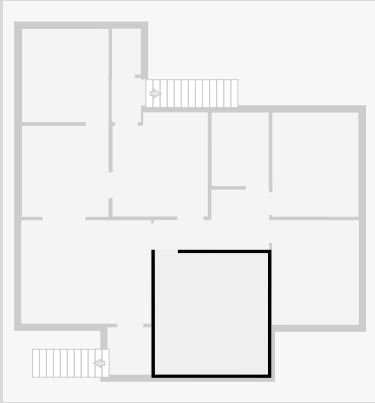
Width: 1.01 m  
Length: 1.61 m  
Area: 1.63 m<sup>2</sup>  
Perimeter: 5.25 m



# 175 Stamford Street

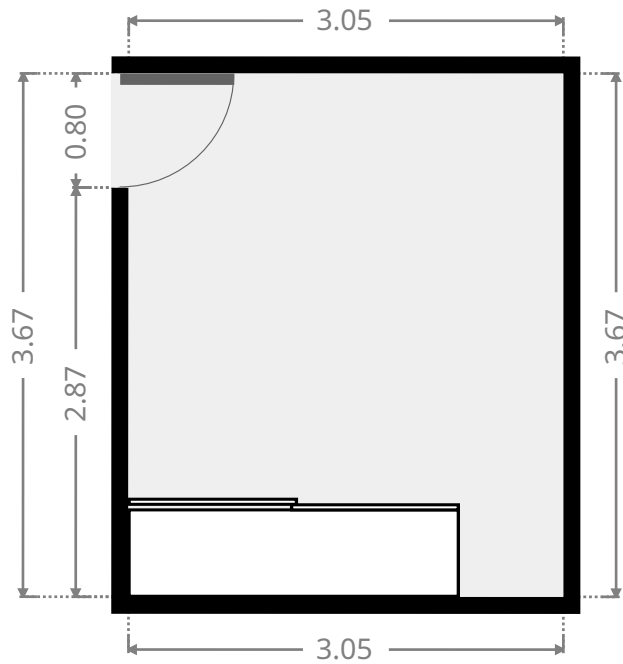
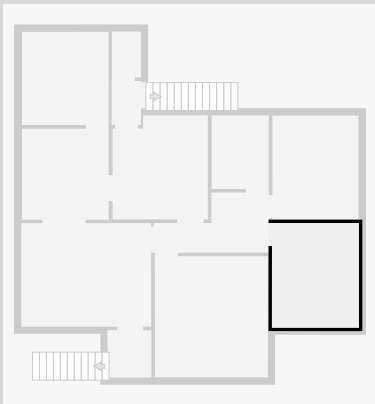
## Bedroom

Width: 3.96 m  
 Length: 4.25 m  
 Area: 16.84 m<sup>2</sup>  
 Perimeter: 16.42 m

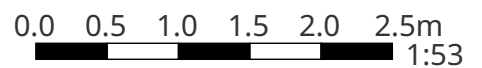


## Bedroom

Width: 3.05 m  
 Length: 3.67 m  
 Area: 11.19 m<sup>2</sup>  
 Perimeter: 13.44 m



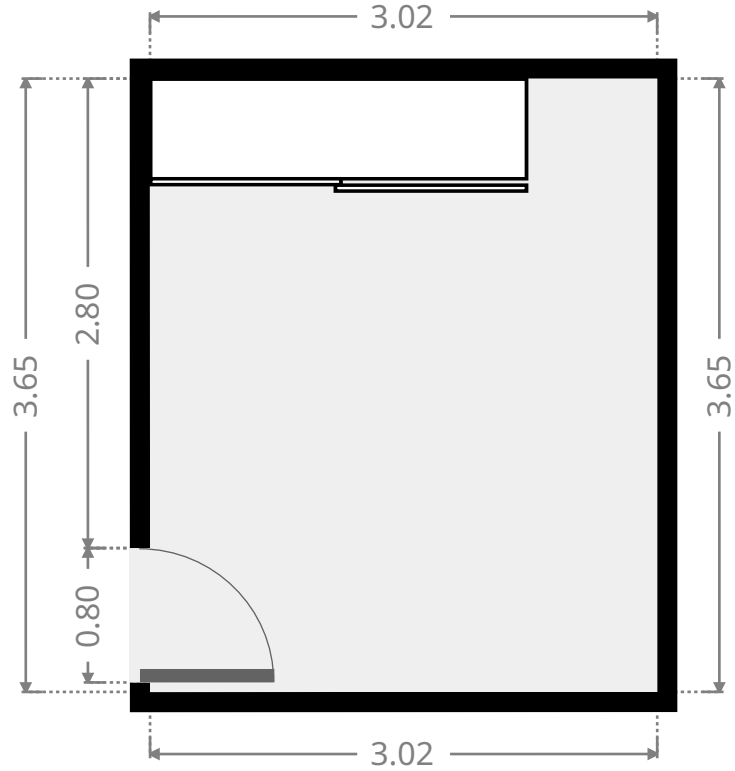
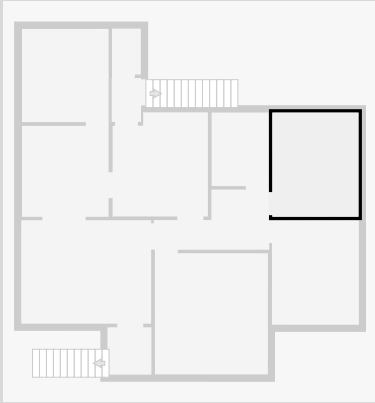
THIS FLOORPLAN IS PROVIDED WITHOUT WARRANTY OF ANY KIND. SENSOPIA DISCLAIMS ANY WARRANTY INCLUDING, WITHOUT LIMITATION, SATISFACTORY QUALITY OR ACCURACY OF DIMENSIONS.



# 175 Stamford Street

## Bedroom

Width: 3.02 m  
Length: 3.65 m  
Area: 11.03 m<sup>2</sup>  
Perimeter: 13.34 m



## Bathroom

Width: 2.00 m  
Length: 2.58 m  
Area: 5.16 m<sup>2</sup>  
Perimeter: 9.16 m

