

# 17 Thomas Street

**SUBMITTED BY**

Ray White Rockhampton Casey  
stockers@cqoz.com

---

**CREATED ON**

2022-10-04

---

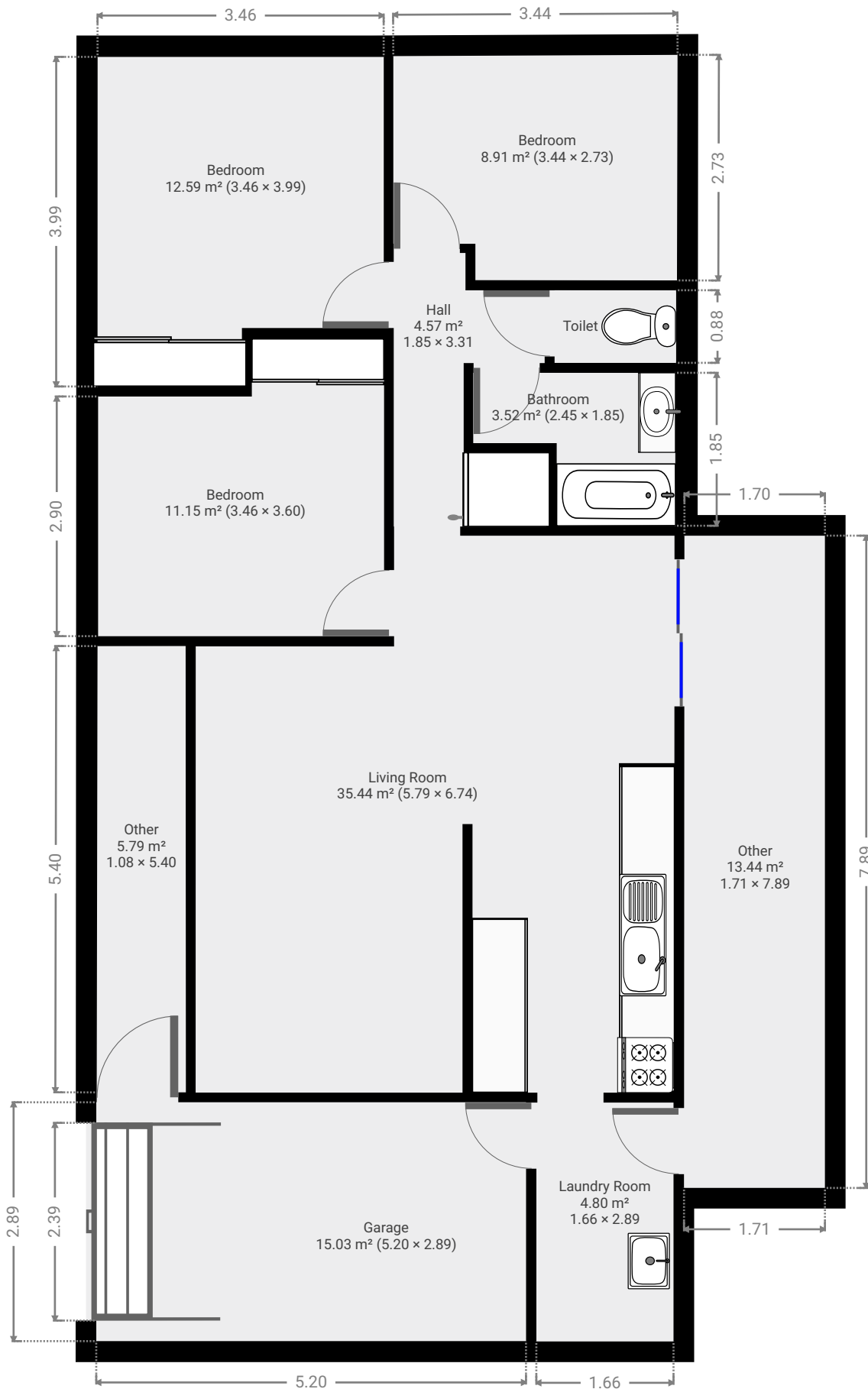
**Floors**

1

---

---

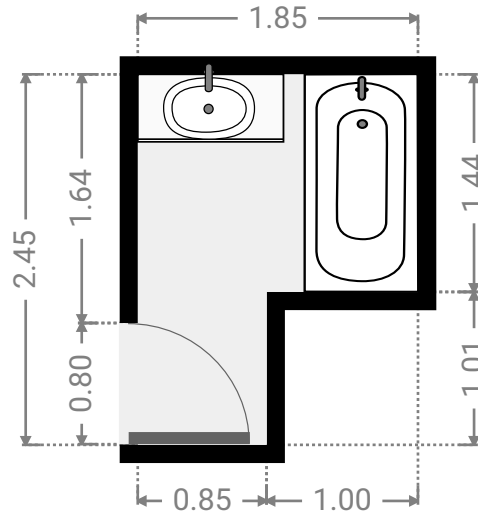
▼ Ground Floor



FLOORS: 1

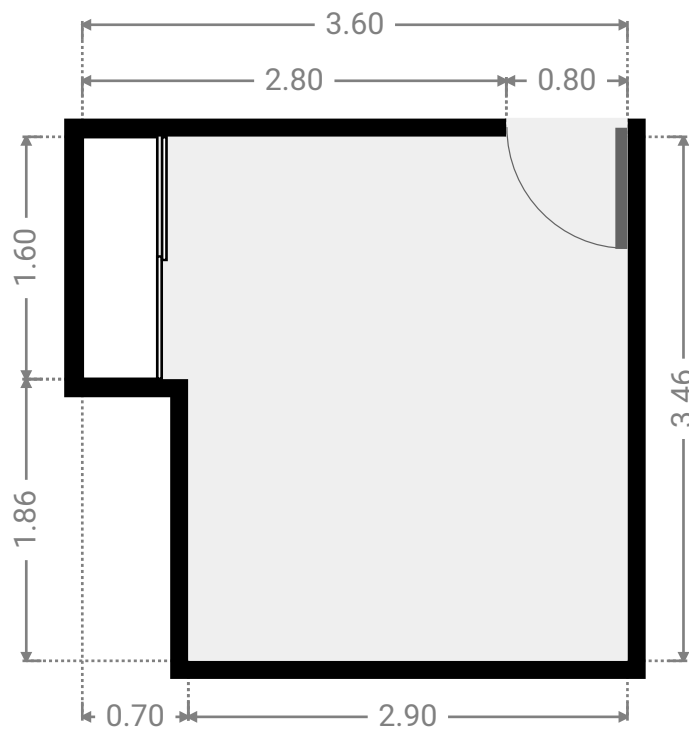
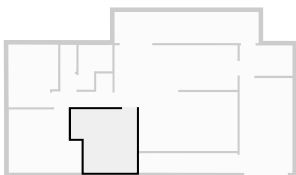
▼ **Bathroom**  
Ground Floor

WIDTH: 1.85 m • LENGTH: 2.45 m  
AREA: 3.52 m<sup>2</sup> • PERIMETER: 8.59 m



▼ **Bedroom**  
Ground Floor

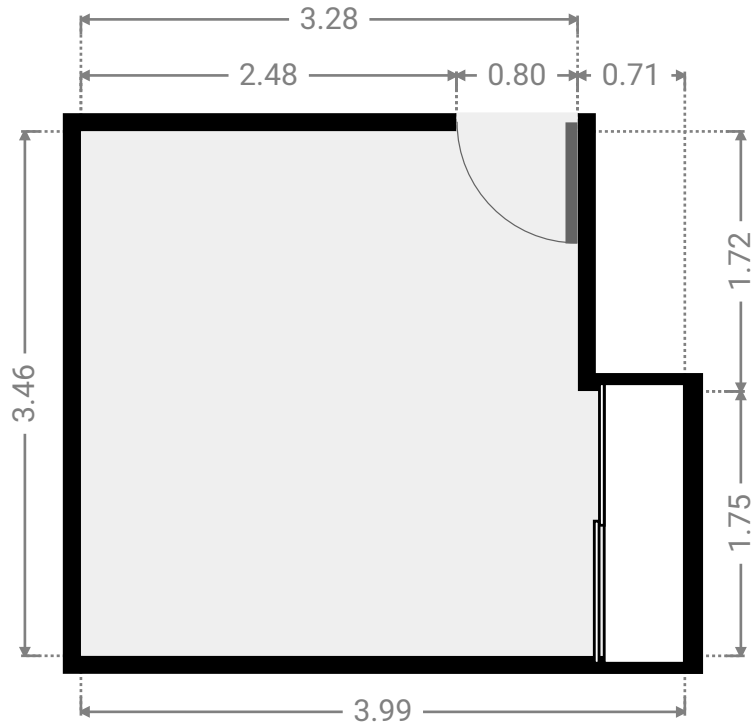
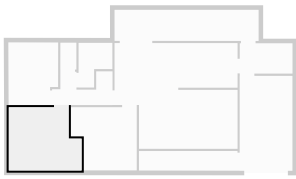
WIDTH: 3.60 m • LENGTH: 3.46 m  
AREA: 11.15 m<sup>2</sup> • PERIMETER: 14.12 m



FLOORS: 1

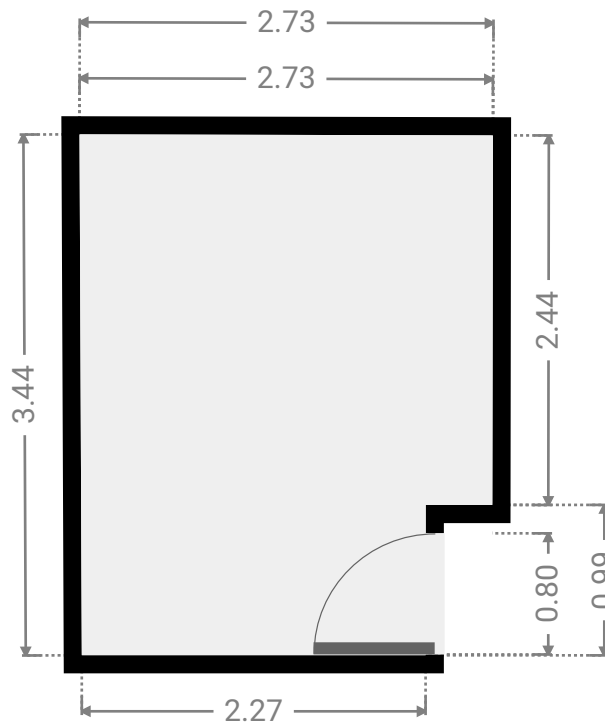
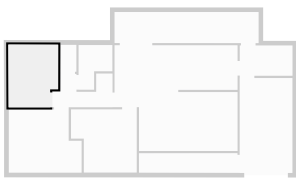
▼ **Bedroom**  
Ground Floor

WIDTH: 3.99 m • LENGTH: 3.46 m  
AREA: 12.59 m<sup>2</sup> • PERIMETER: 14.90 m



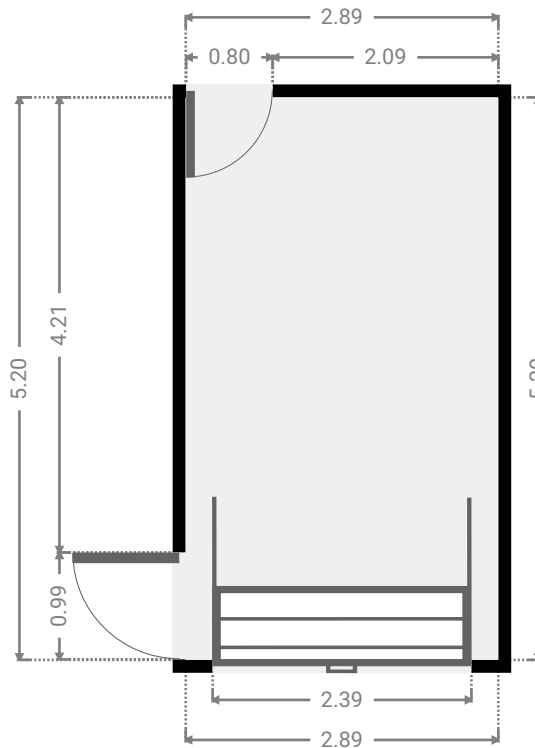
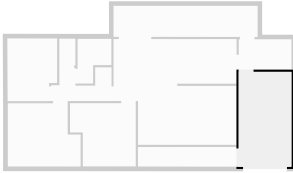
▼ **Bedroom**  
Ground Floor

WIDTH: 2.73 m • LENGTH: 3.44 m  
AREA: 8.91 m<sup>2</sup> • PERIMETER: 12.31 m



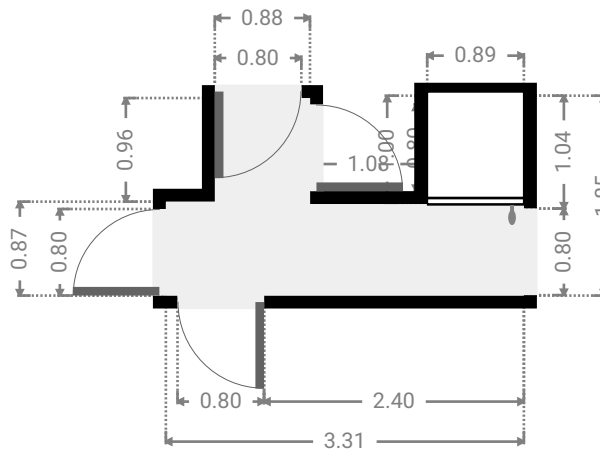
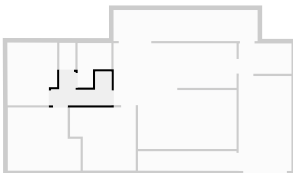
▼ Garage  
Ground Floor

WIDTH: 2.89 m • LENGTH: 5.20 m  
AREA: 15.03 m<sup>2</sup> • PERIMETER: 16.18 m



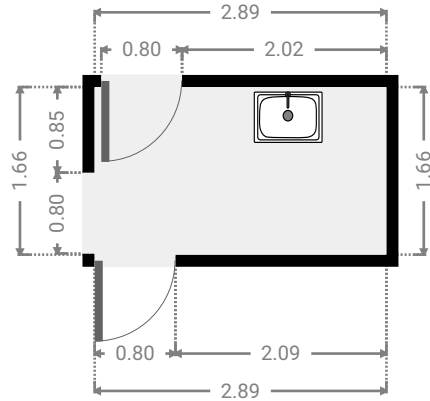
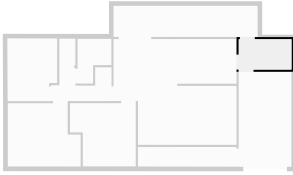
▼ Hall  
Ground Floor

WIDTH: 3.31 m • LENGTH: 1.85 m  
AREA: 4.57 m<sup>2</sup> • PERIMETER: 12.28 m



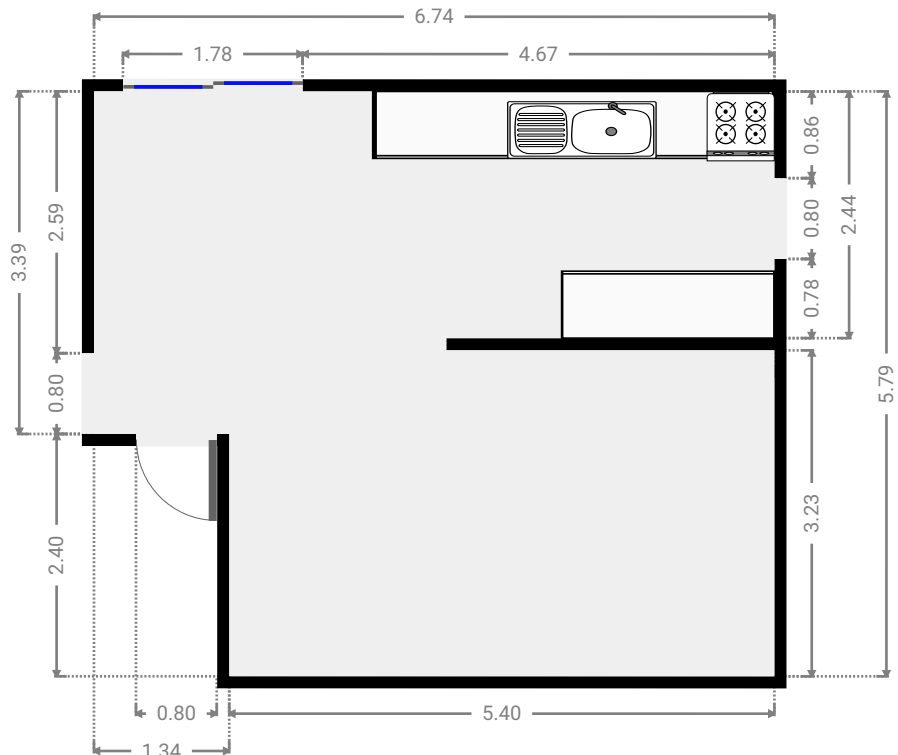
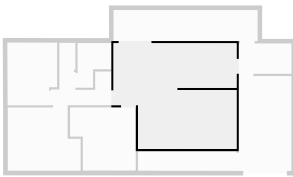
▼ **Laundry Room**  
Ground Floor

WIDTH: 2.89 m • LENGTH: 1.66 m  
AREA: 4.80 m<sup>2</sup> • PERIMETER: 9.10 m



▼ **Living Room**  
Ground Floor

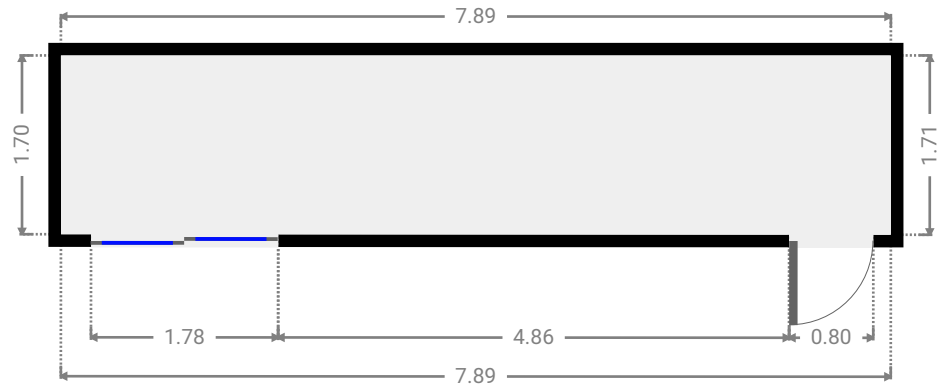
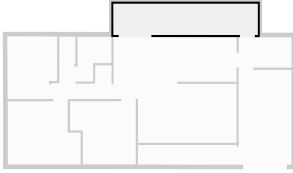
WIDTH: 6.74 m • LENGTH: 5.79 m  
AREA: 35.44 m<sup>2</sup> • PERIMETER: 31.57 m



FLOORS: 1

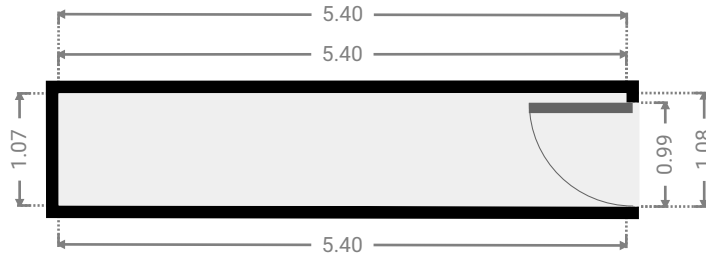
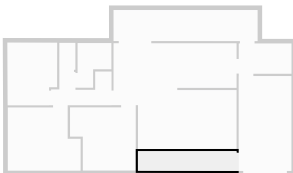
▼ **Other**  
Ground Floor

WIDTH: 7.89 m • LENGTH: 1.71 m  
AREA: 13.44 m<sup>2</sup> • PERIMETER: 19.19 m



▼ **Other**  
Ground Floor

WIDTH: 5.40 m • LENGTH: 1.08 m  
AREA: 5.79 m<sup>2</sup> • PERIMETER: 12.95 m



▼ Toilet  
Ground Floor

WIDTH: 0.88 m • LENGTH: 1.47 m  
AREA: 1.29 m<sup>2</sup> • PERIMETER: 4.70 m

