

# 17 Reddy Drive

**SUBMITTED BY**  
Ray White Rockhampton Casey  
stockers@cqoz.com

---

**CREATED ON**  
2022-06-22

---

**Floors**  
1

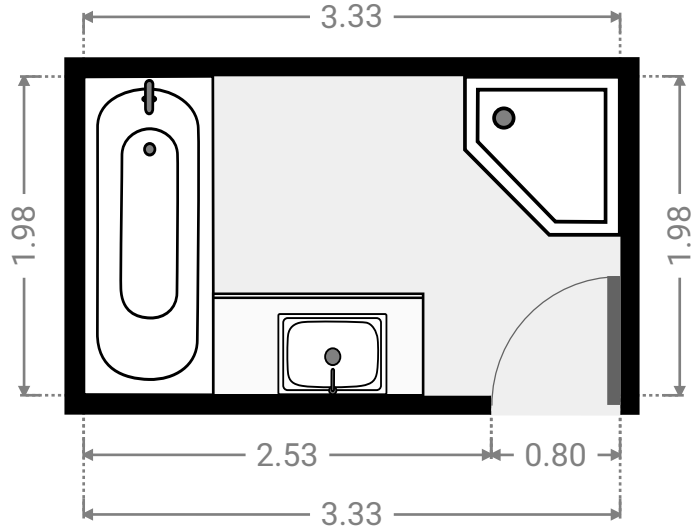
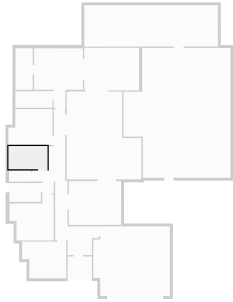
---

▼ Ground Floor



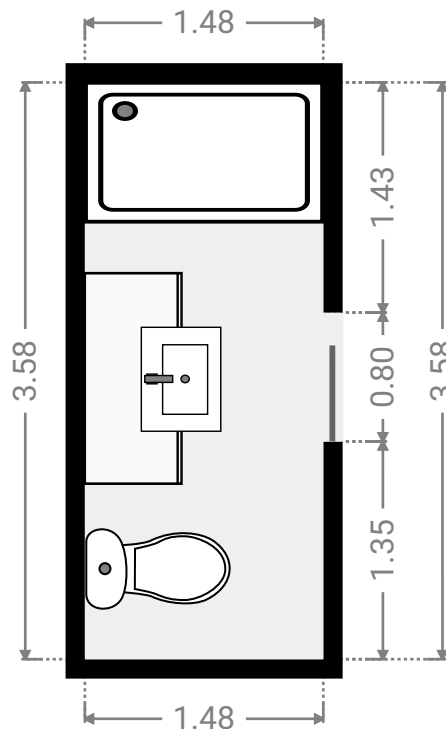
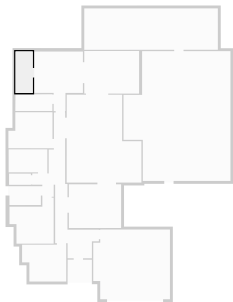
▼ **Bathroom**  
Ground Floor

WIDTH: 3.33 m • LENGTH: 1.98 m  
AREA: 6.59 m<sup>2</sup> • PERIMETER: 10.62 m



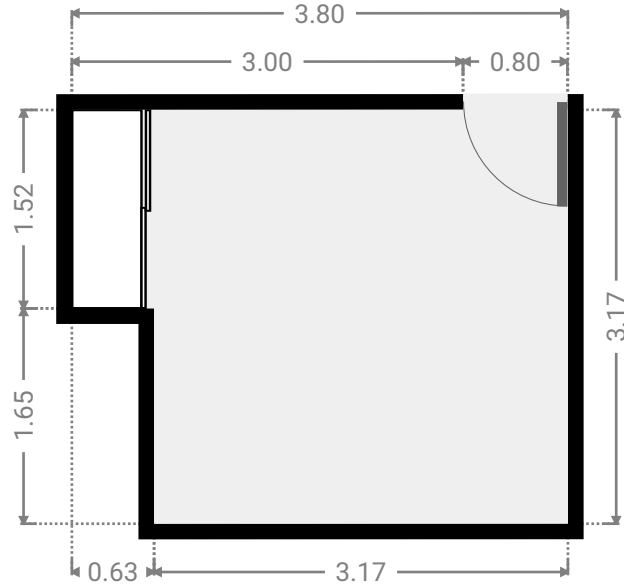
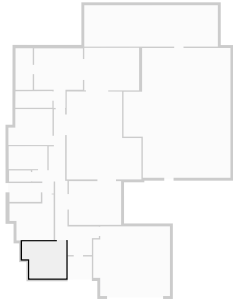
▼ **Bathroom**  
Ground Floor

WIDTH: 1.48 m • LENGTH: 3.58 m  
AREA: 5.30 m<sup>2</sup> • PERIMETER: 10.12 m



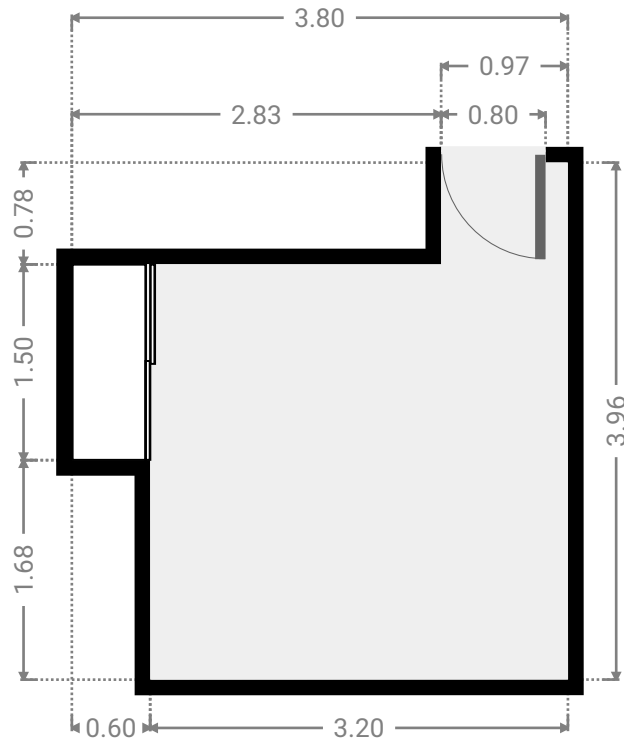
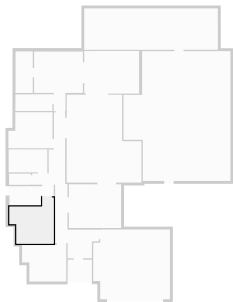
▼ **Bedroom**  
Ground Floor

WIDTH: 3.80 m • LENGTH: 3.17 m  
AREA: 11.01 m<sup>2</sup> • PERIMETER: 13.94 m



▼ **Bedroom**  
Ground Floor

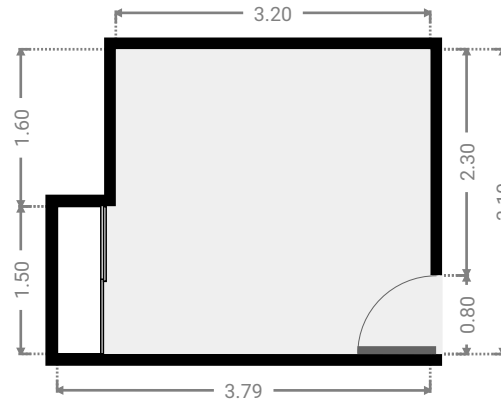
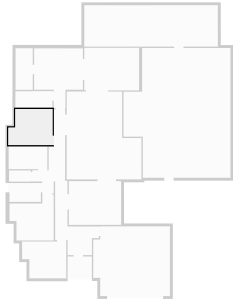
WIDTH: 3.80 m • LENGTH: 3.96 m  
AREA: 11.83 m<sup>2</sup> • PERIMETER: 15.52 m



FLOORS: 1

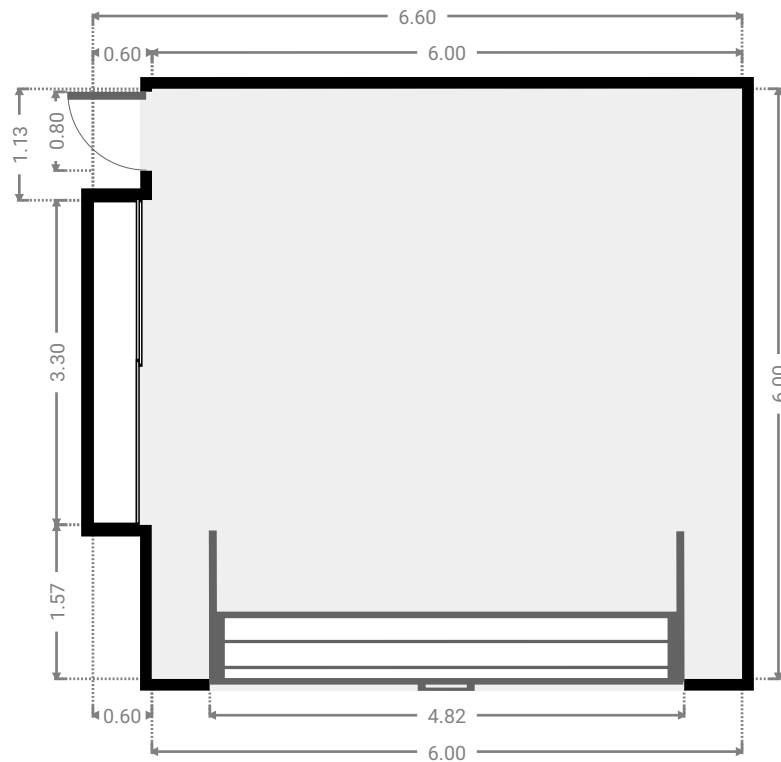
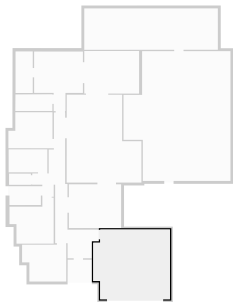
▼ **Bedroom**  
Ground Floor

WIDTH: 3.79 m • LENGTH: 3.10 m  
AREA: 10.80 m<sup>2</sup> • PERIMETER: 13.78 m



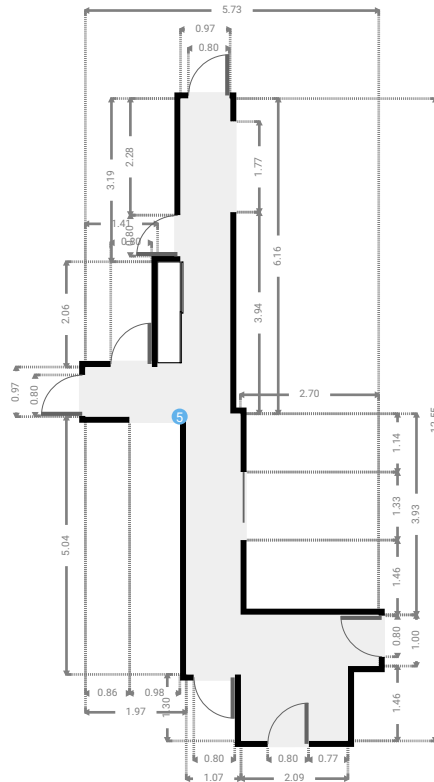
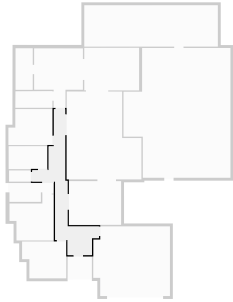
▼ **Garage**  
Ground Floor

WIDTH: 6.60 m • LENGTH: 6.00 m  
AREA: 37.98 m<sup>2</sup> • PERIMETER: 25.20 m



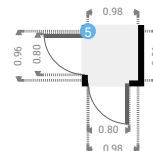
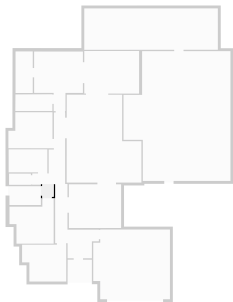
▼ Hall  
Ground Floor

WIDTH: 5.73 m • LENGTH: 12.55 m  
AREA: 19.87 m<sup>2</sup> • PERIMETER: 36.57 m



▼ Hall  
Ground Floor

WIDTH: 0.98 m • LENGTH: 0.96 m  
AREA: 0.94 m<sup>2</sup> • PERIMETER: 3.88 m



▼ **Hall**/Ground Floor

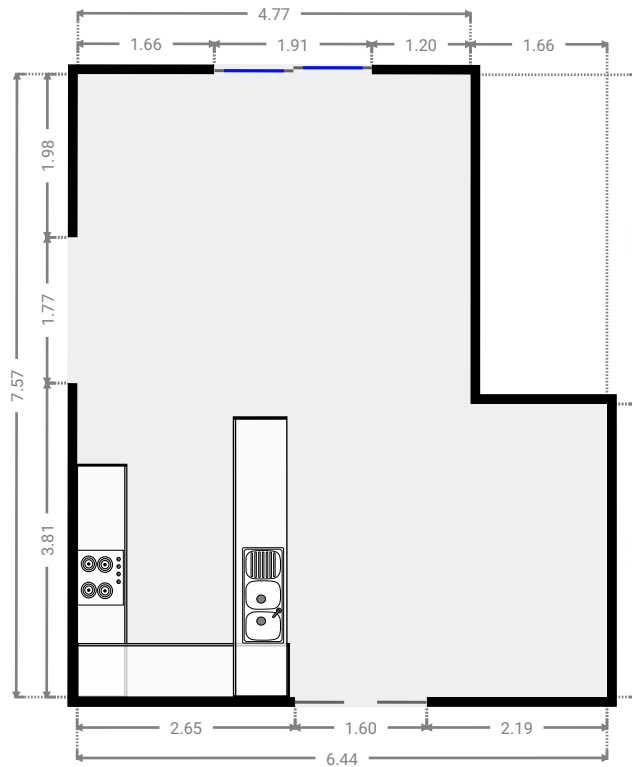
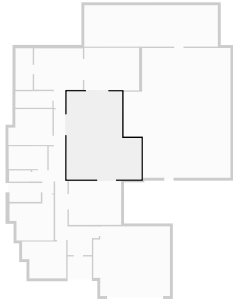
5 **OPENING**

Height  
0.00 m



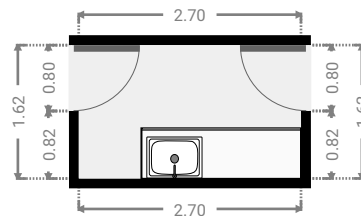
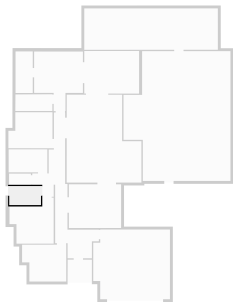
## ▼ Kitchen Ground Floor

WIDTH: 6.44 m • LENGTH: 7.57 m  
AREA: 42.02 m<sup>2</sup> • PERIMETER: 28.00 m



## ▼ Laundry Room Ground Floor

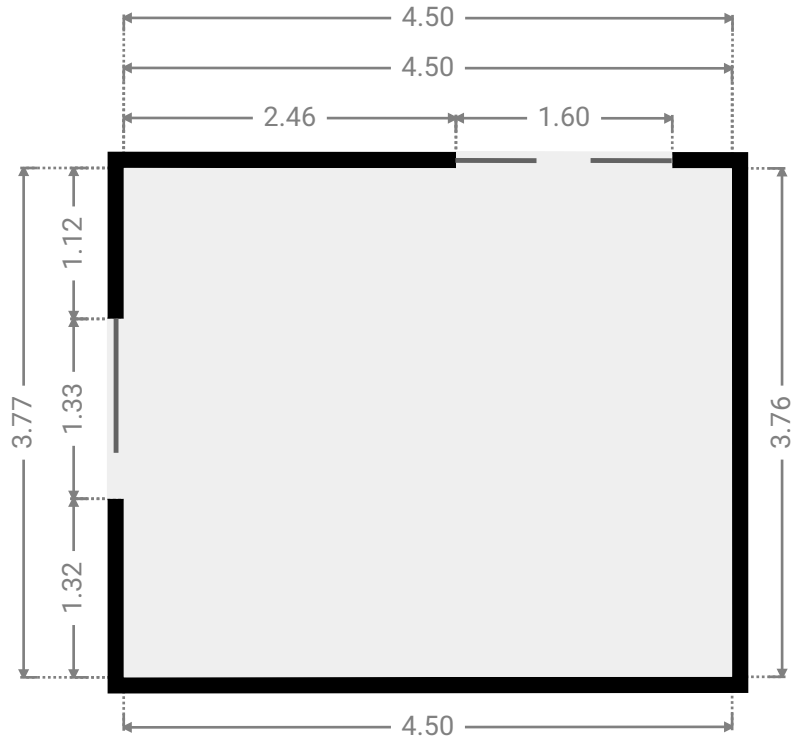
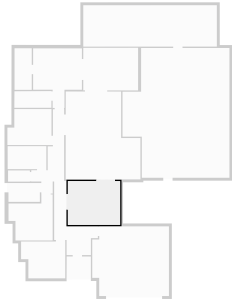
WIDTH: 2.70 m • LENGTH: 1.62 m  
AREA: 4.38 m<sup>2</sup> • PERIMETER: 8.64 m





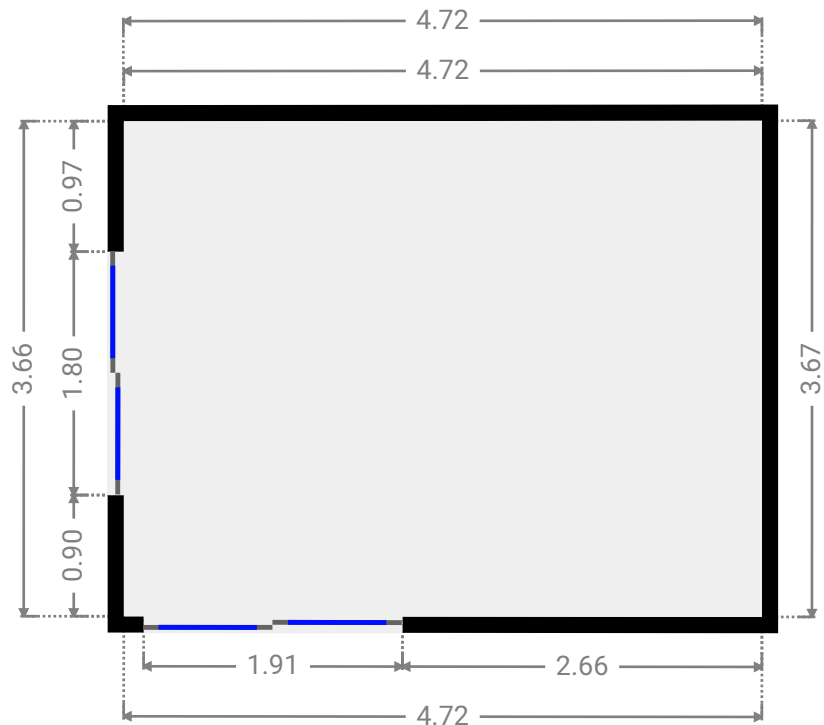
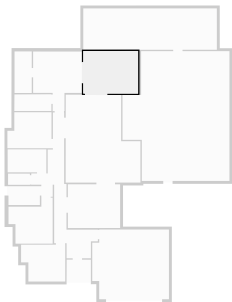
▼ Living Room  
Ground Floor

WIDTH: 4.50 m • LENGTH: 3.77 m  
AREA: 16.93 m<sup>2</sup> • PERIMETER: 16.53 m



▼ Other  
Ground Floor

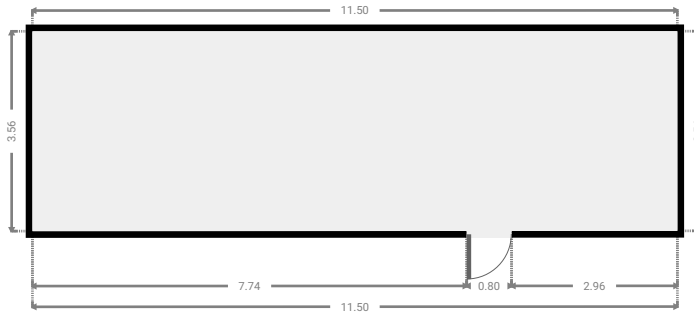
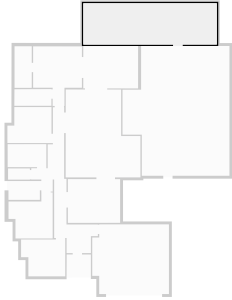
WIDTH: 4.72 m • LENGTH: 3.67 m  
AREA: 17.30 m<sup>2</sup> • PERIMETER: 16.77 m



FLOORS: 1

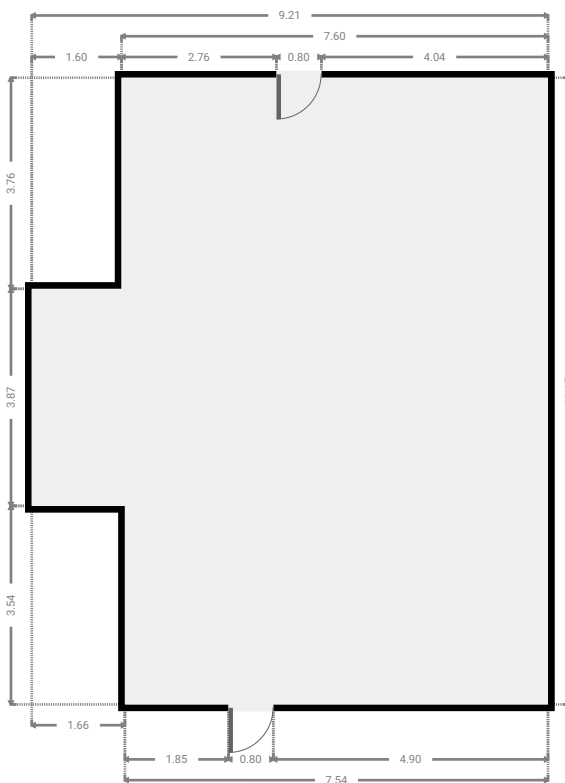
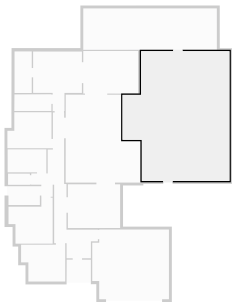
## ▼ Other Ground Floor

WIDTH: 11.50 m • LENGTH: 3.56 m  
AREA: 40.95 m<sup>2</sup> • PERIMETER: 30.12 m



## ▼ Other Ground Floor

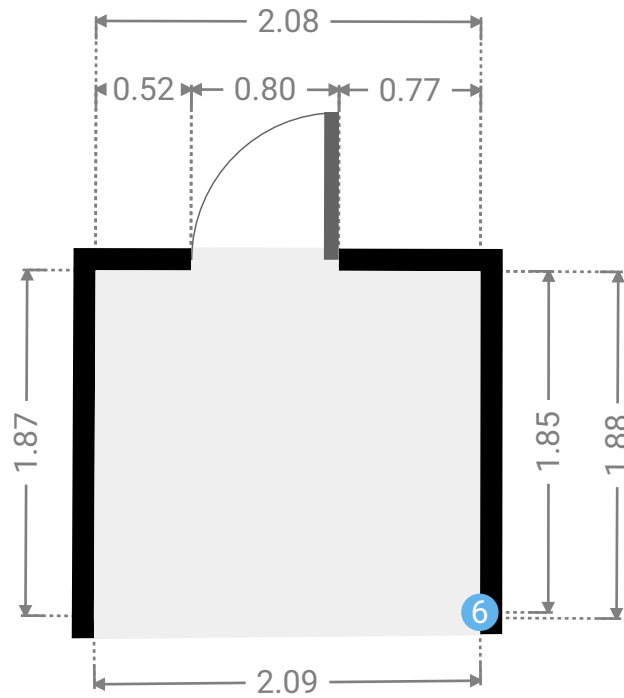
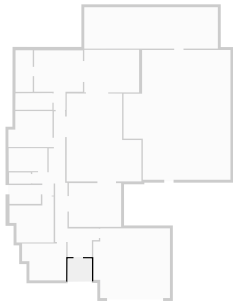
WIDTH: 9.21 m • LENGTH: 11.17 m  
AREA: 90.95 m<sup>2</sup> • PERIMETER: 40.76 m



FLOORS: 1

## ▼ Other Ground Floor

WIDTH: 2.09 m • LENGTH: 1.88 m  
AREA: 3.88 m<sup>2</sup> • PERIMETER: 7.89 m



## ▼ Other/Ground Floor

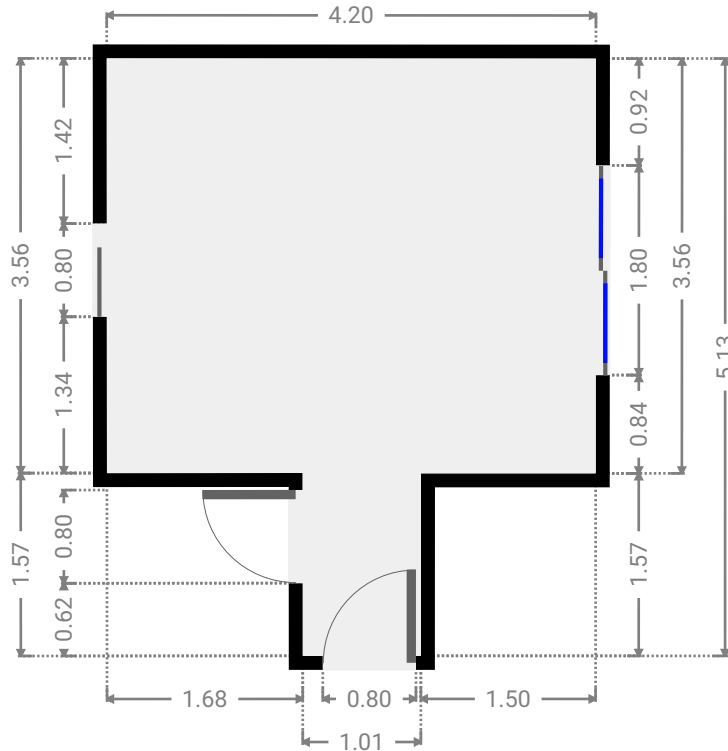
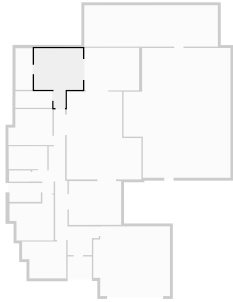
### 6 OPENING

Height  
0.00 m



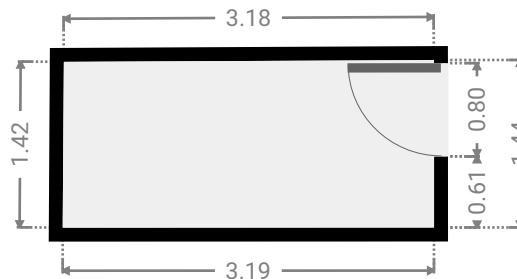
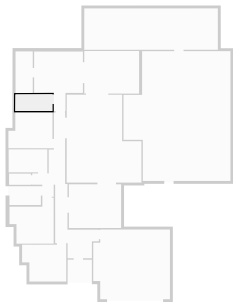
▼ **Primary Bedroom**  
Ground Floor

WIDTH: 4.20 m • LENGTH: 5.13 m  
AREA: 16.53 m<sup>2</sup> • PERIMETER: 18.65 m



▼ **Closet**  
Ground Floor

WIDTH: 3.19 m • LENGTH: 1.44 m  
AREA: 4.55 m<sup>2</sup> • PERIMETER: 9.22 m



▼ Toilet  
Ground Floor

WIDTH: 1.88 m • LENGTH: 0.96 m  
AREA: 1.81 m<sup>2</sup> • PERIMETER: 5.68 m

