

17 Hollingsworth Street

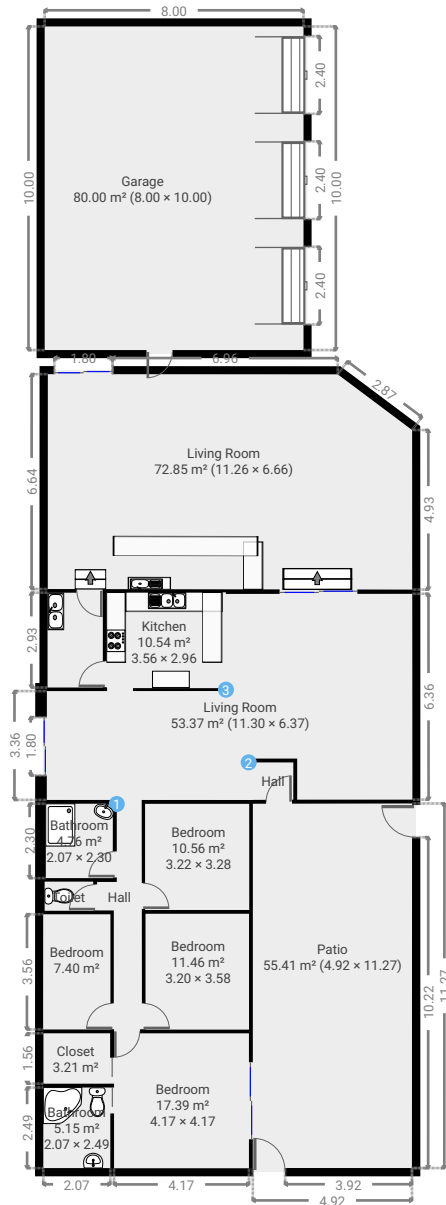
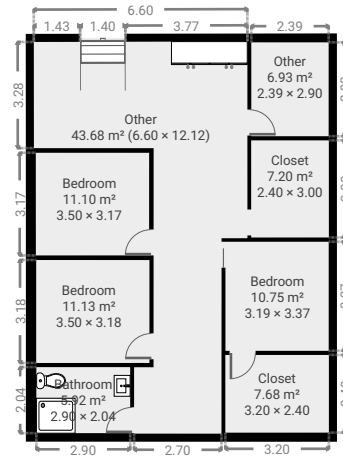
SUBMITTED BY
Ray White Rockhampton Casey
stockers@cqoz.com

CREATED ON
2022-01-05

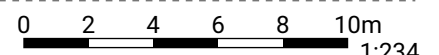
Floors
1

FLOORS: 1

▼ Ground Floor



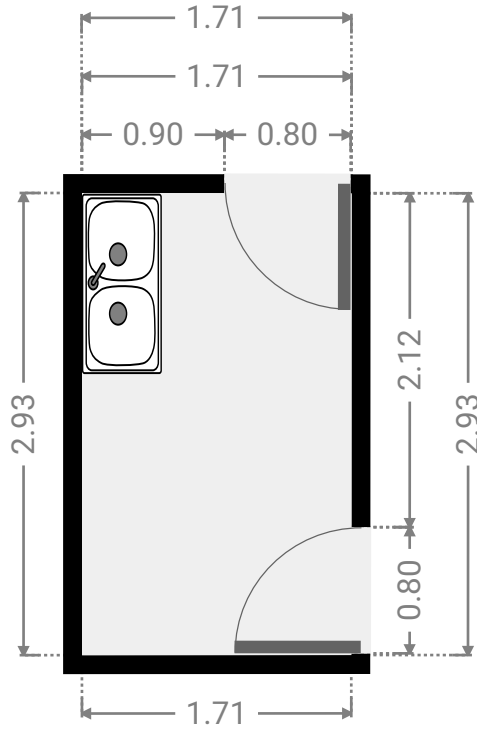
THIS FLOORPLAN IS PROVIDED WITHOUT WARRANTY OF ANY KIND. SENSOPIA DISCLAIMS ANY WARRANTY INCLUDING, WITHOUT LIMITATION, SATISFACTORY QUALITY OR ACCURACY OF DIMENSIONS.



FLOORS: 1

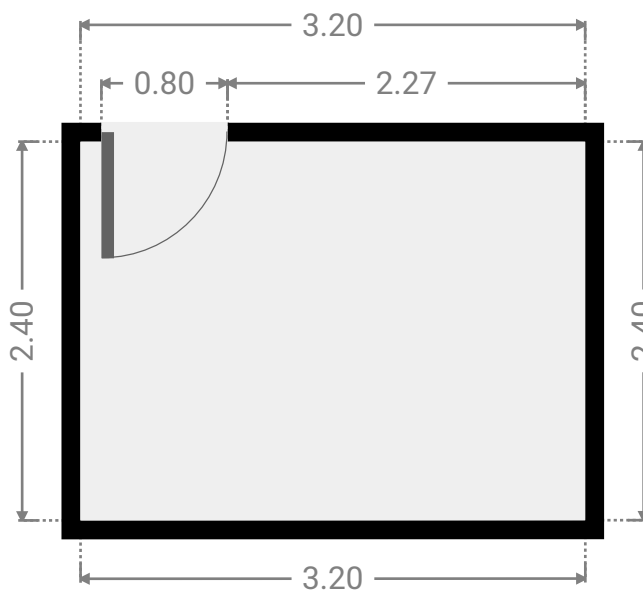
▼ Laundry Room
Ground Floor

WIDTH: 1.71 m • LENGTH: 2.93 m
AREA: 5.00 m² • PERIMETER: 9.27 m



▼ Closet
Ground Floor

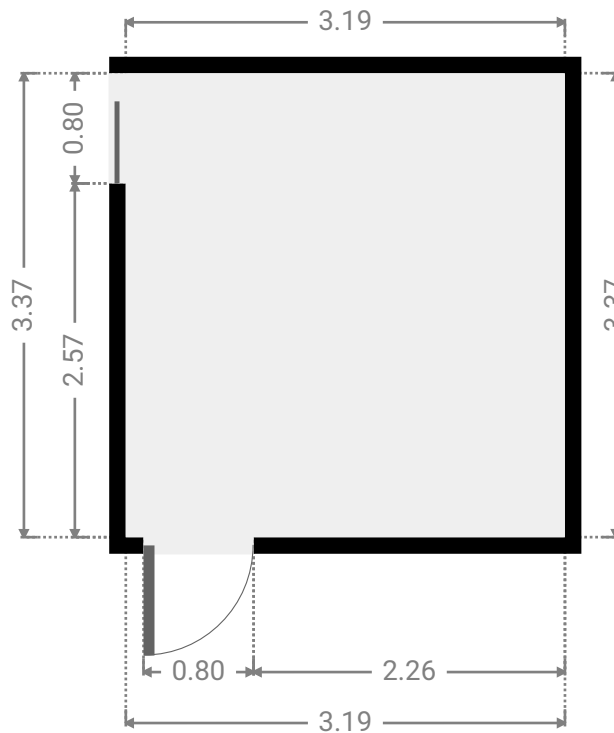
WIDTH: 3.20 m • LENGTH: 2.40 m
AREA: 7.68 m² • PERIMETER: 11.20 m



FLOORS: 1

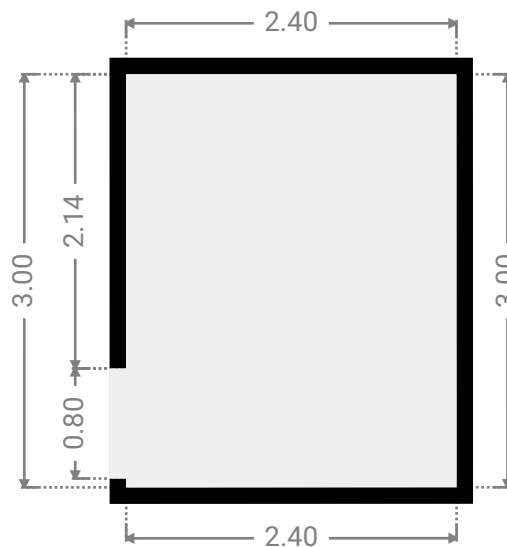
▼ **Bedroom**
Ground Floor

WIDTH: 3.19 m • LENGTH: 3.37 m
AREA: 10.75 m² • PERIMETER: 13.12 m



▼ **Closet**
Ground Floor

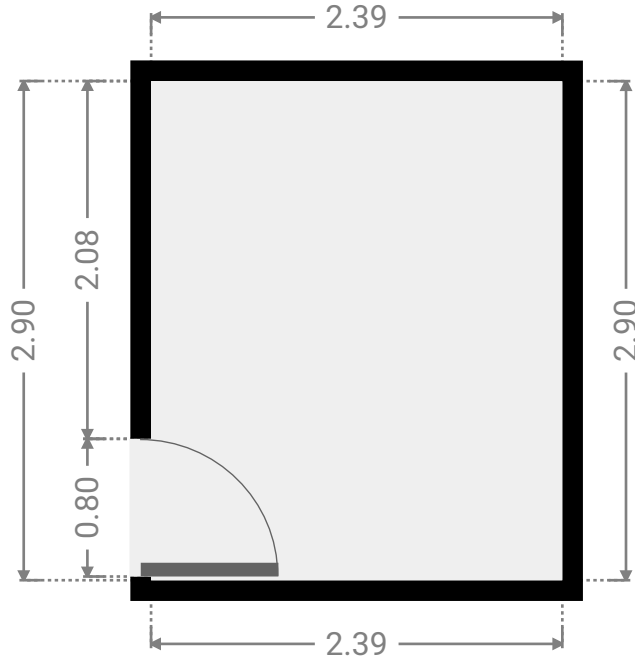
WIDTH: 2.40 m • LENGTH: 3.00 m
AREA: 7.20 m² • PERIMETER: 10.80 m



FLOORS: 1

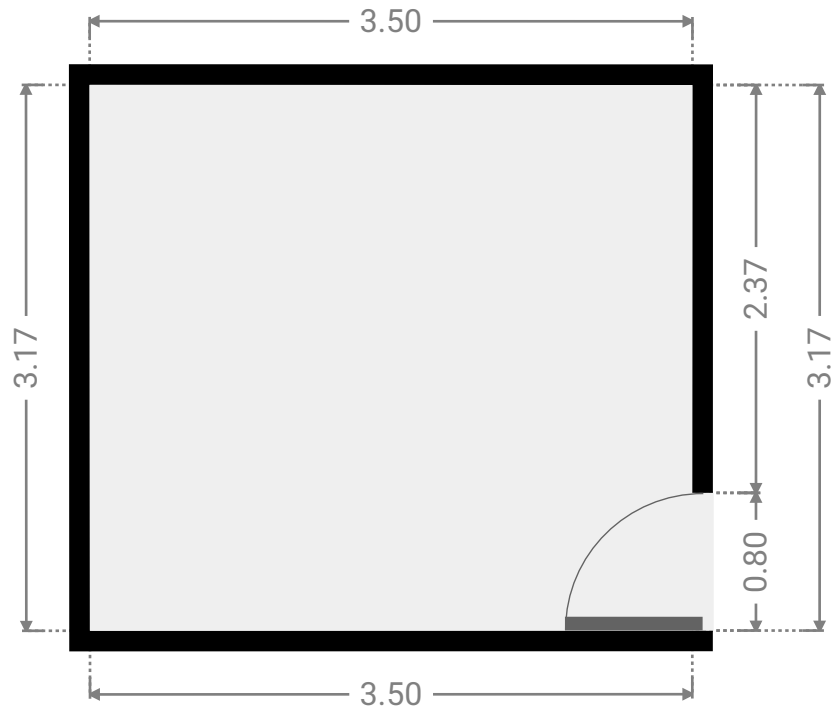
▼ **Other**
Ground Floor

WIDTH: 2.39 m • LENGTH: 2.90 m
AREA: 6.93 m² • PERIMETER: 10.58 m



▼ **Bedroom**
Ground Floor

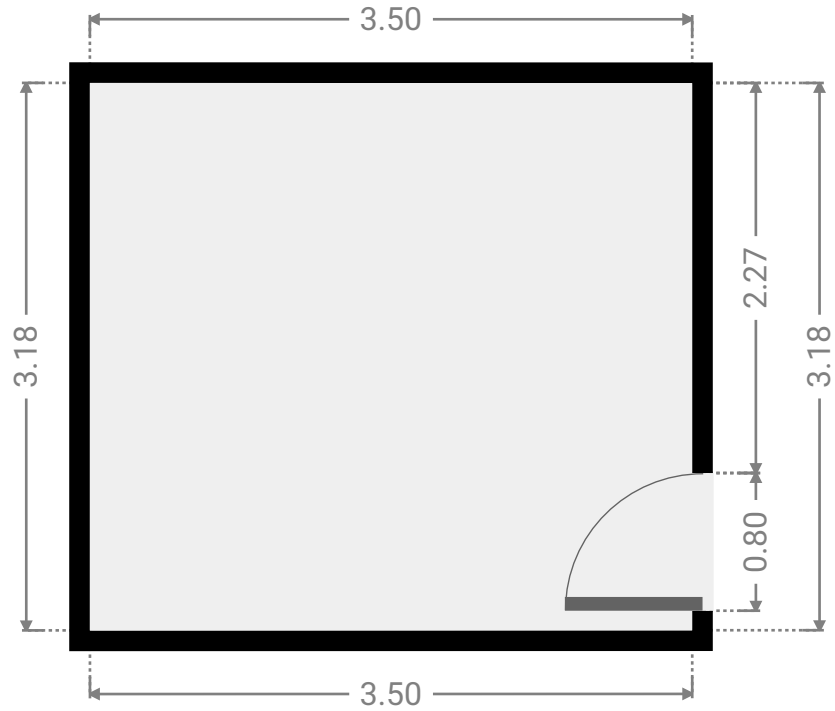
WIDTH: 3.50 m • LENGTH: 3.17 m
AREA: 11.10 m² • PERIMETER: 13.35 m



FLOORS: 1

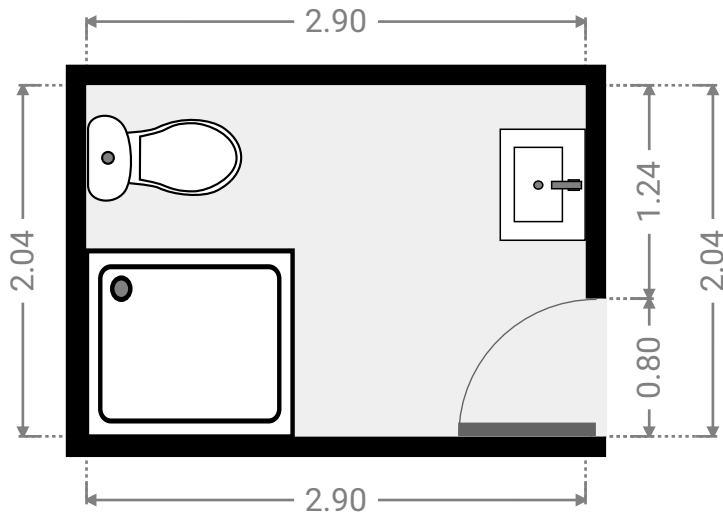
▼ **Bedroom**
Ground Floor

WIDTH: 3.50 m • LENGTH: 3.18 m
AREA: 11.13 m² • PERIMETER: 13.36 m



▼ **Bathroom**
Ground Floor

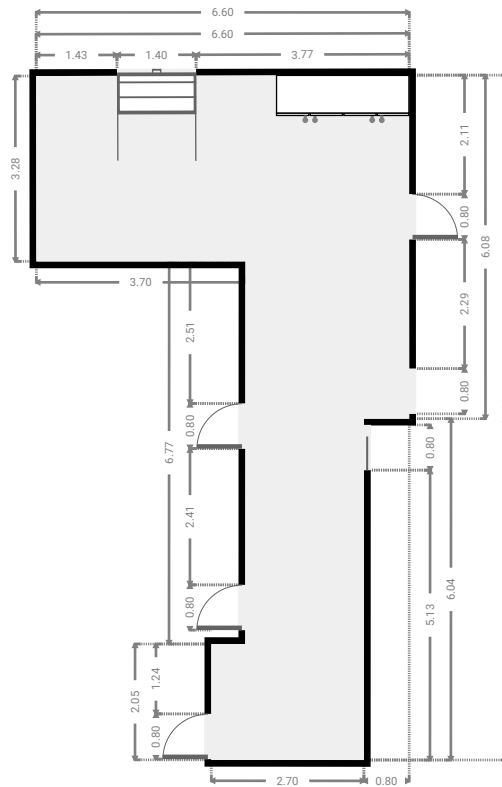
WIDTH: 2.90 m • LENGTH: 2.04 m
AREA: 5.92 m² • PERIMETER: 9.88 m



FLOORS: 1

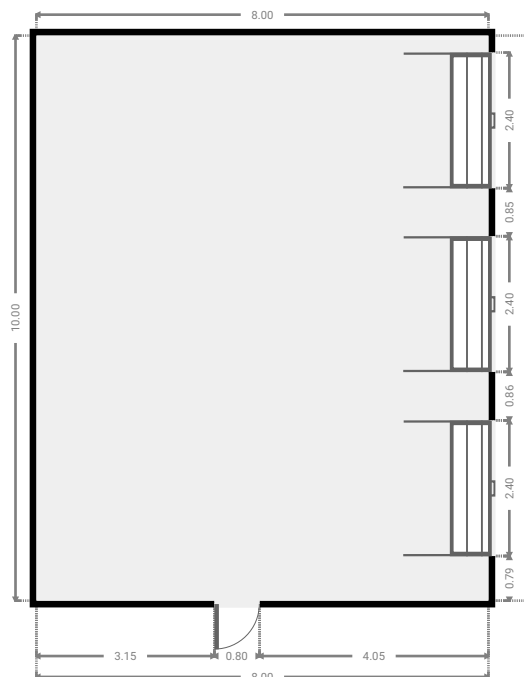
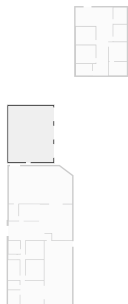
▼ Other Ground Floor

WIDTH: 6.60 m • LENGTH: 12.12 m
AREA: 43.68 m² • PERIMETER: 38.62 m



▼ Garage Ground Floor

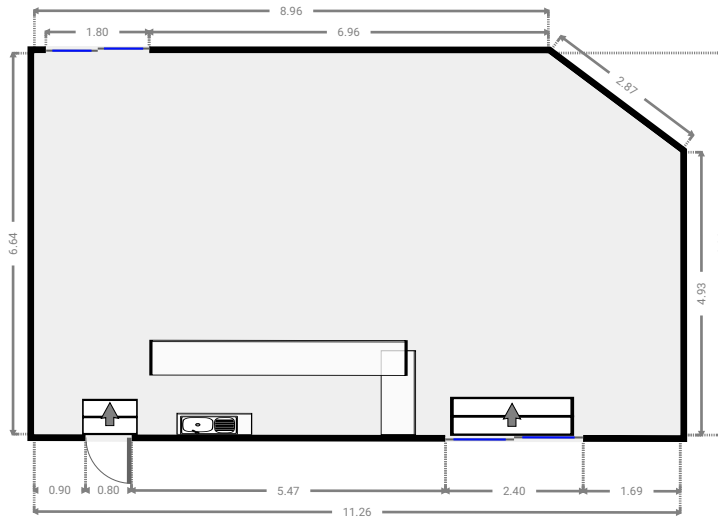
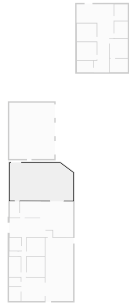
WIDTH: 8.00 m • LENGTH: 10.00 m
AREA: 80.00 m² • PERIMETER: 36.00 m



FLOORS: 1

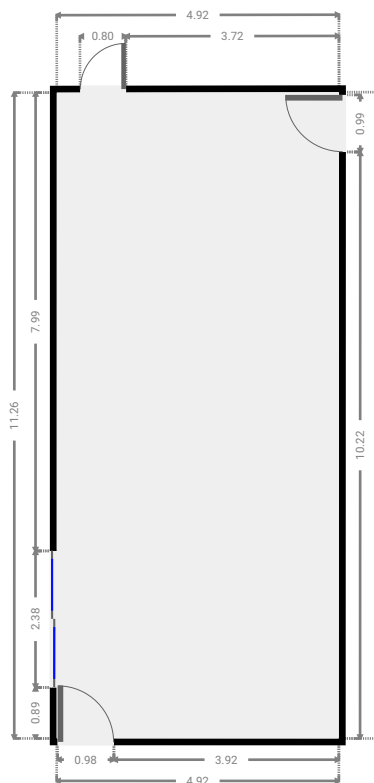
▼ **Living Room**
Ground Floor

WIDTH: 11.26 m • LENGTH: 6.66 m
AREA: 72.85 m² • PERIMETER: 34.66 m



▼ **Patio**
Ground Floor

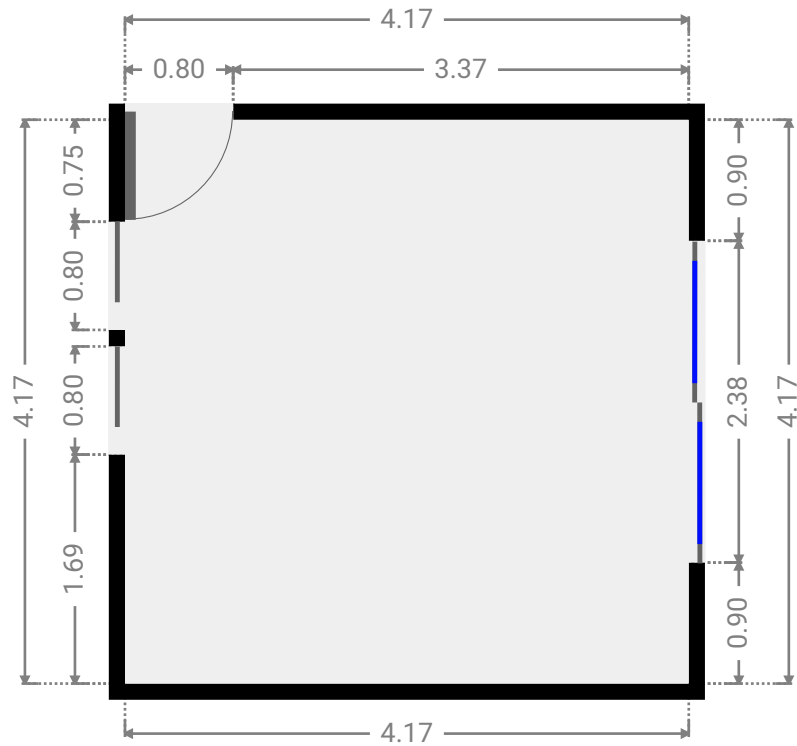
WIDTH: 4.92 m • LENGTH: 11.27 m
AREA: 55.41 m² • PERIMETER: 32.36 m



FLOORS: 1

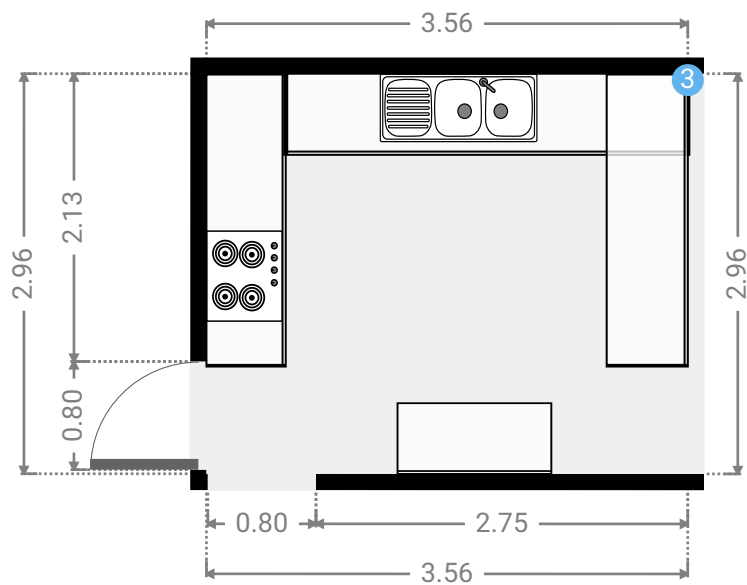
▼ **Bedroom**
Ground Floor

WIDTH: 4.17 m • LENGTH: 4.17 m
AREA: 17.39 m² • PERIMETER: 16.68 m



▼ **Kitchen**
Ground Floor

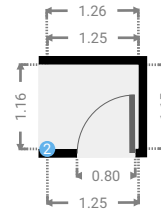
WIDTH: 3.56 m • LENGTH: 2.96 m
AREA: 10.54 m² • PERIMETER: 13.04 m



FLOORS: 1

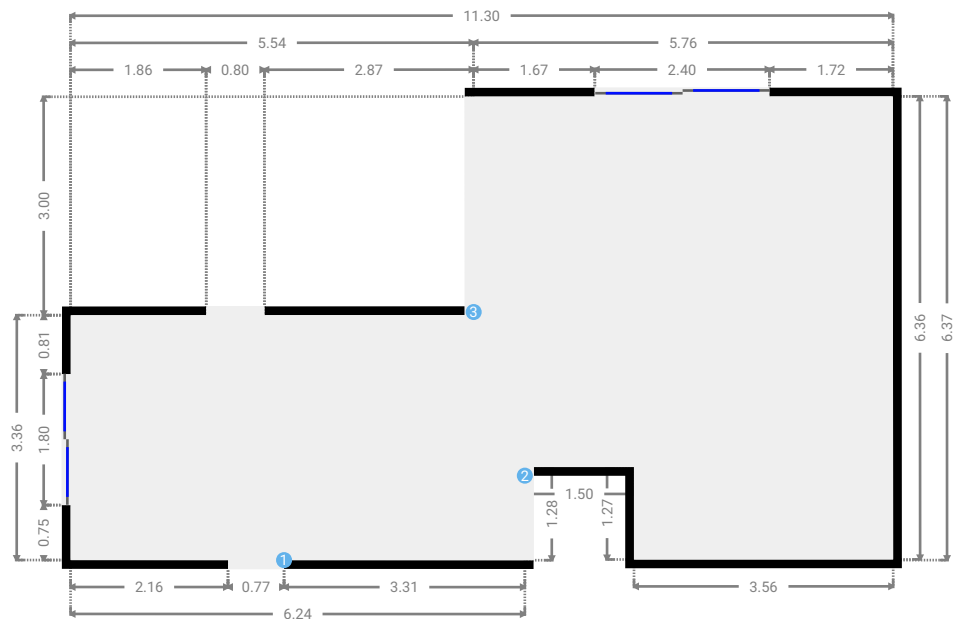
▼ Hall
Ground Floor

WIDTH: 1.26 m • LENGTH: 1.16 m
AREA: 1.45 m² • PERIMETER: 4.81 m



▼ Living Room
Ground Floor

WIDTH: 11.30 m • LENGTH: 6.37 m
AREA: 53.37 m² • PERIMETER: 37.87 m



▼ Living Room/Ground Floor

2 OPENING

Height
0.00 m



3 OPENING

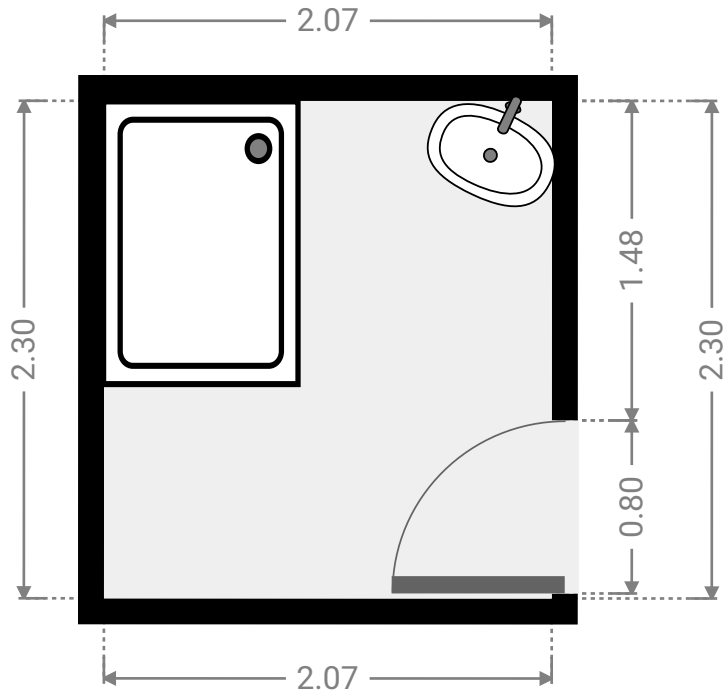
Height
0.00 m



FLOORS: 1

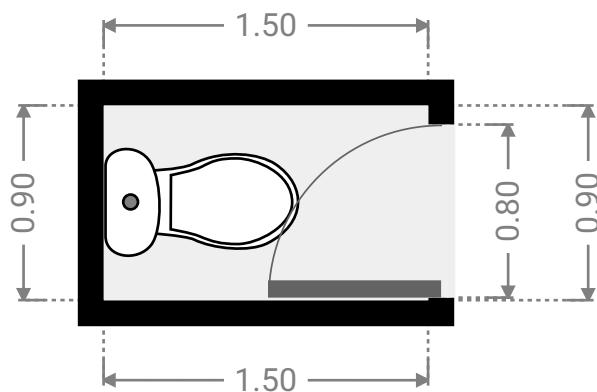
▼ **Bathroom**
Ground Floor

WIDTH: 2.07 m • LENGTH: 2.30 m
AREA: 4.76 m² • PERIMETER: 8.74 m



▼ **Toilet**
Ground Floor

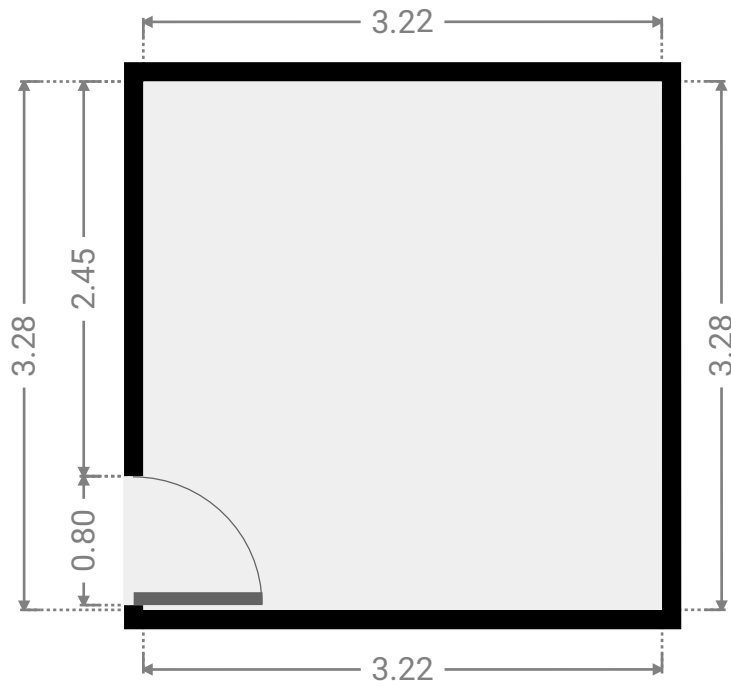
WIDTH: 1.50 m • LENGTH: 0.90 m
AREA: 1.35 m² • PERIMETER: 4.80 m



FLOORS: 1

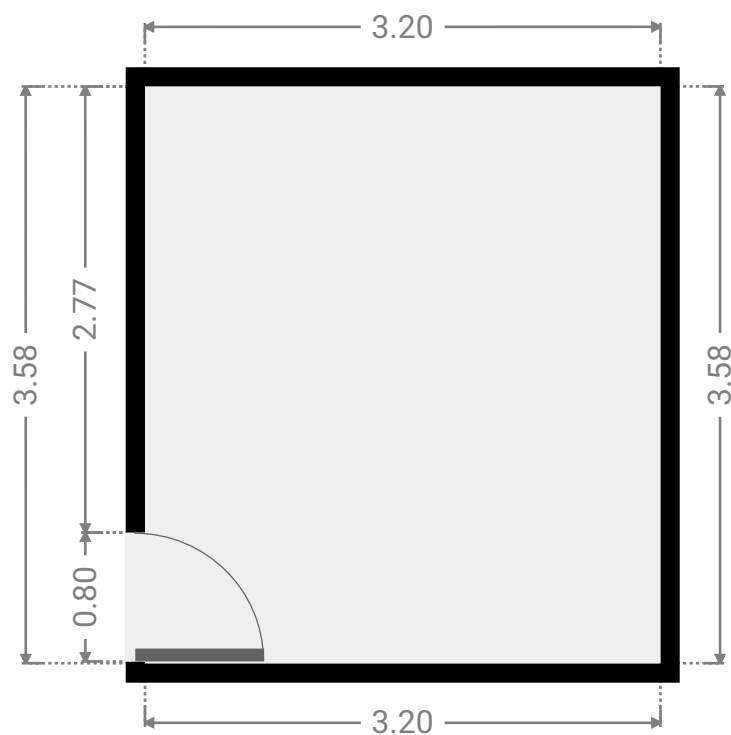
▼ **Bedroom**
Ground Floor

WIDTH: 3.22 m • LENGTH: 3.28 m
AREA: 10.56 m² • PERIMETER: 13.00 m



▼ **Bedroom**
Ground Floor

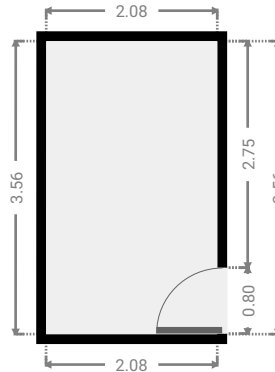
WIDTH: 3.20 m • LENGTH: 3.58 m
AREA: 11.46 m² • PERIMETER: 13.56 m



FLOORS: 1

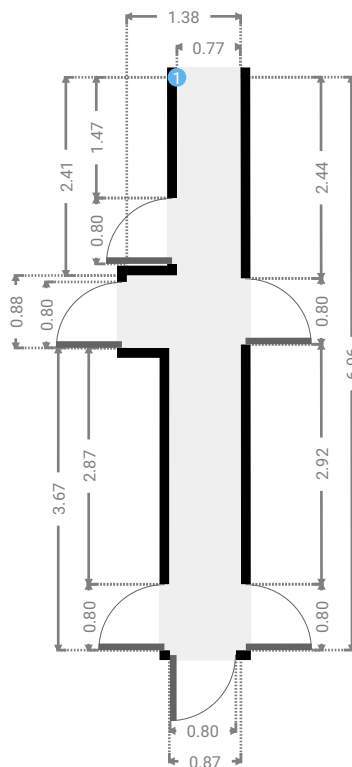
▼ **Bedroom**
Ground Floor

WIDTH: 2.08 m • LENGTH: 3.56 m
AREA: 7.40 m² • PERIMETER: 11.28 m



▼ **Hall**
Ground Floor

WIDTH: 1.38 m • LENGTH: 6.96 m
AREA: 6.26 m² • PERIMETER: 16.69 m



▼ **Hall**/Ground Floor

1 **OPENING**

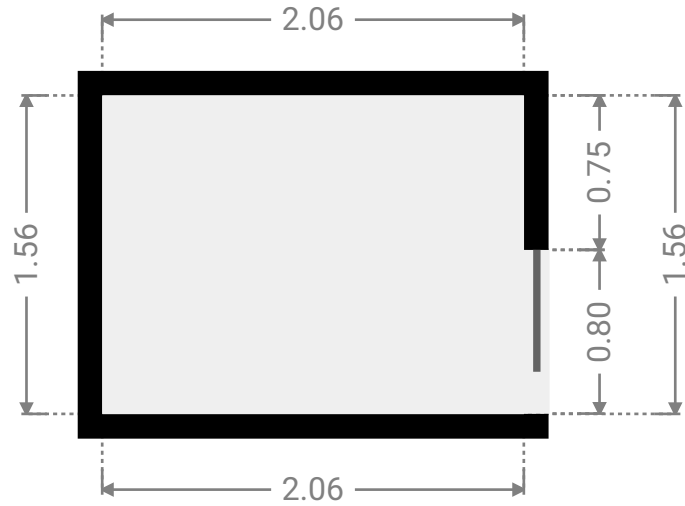
Height
0.00 m



FLOORS: 1

▼ **Closet**
Ground Floor

WIDTH: 2.06 m • LENGTH: 1.56 m
AREA: 3.21 m² • PERIMETER: 7.23 m



▼ **Bathroom**
Ground Floor

WIDTH: 2.07 m • LENGTH: 2.49 m
AREA: 5.15 m² • PERIMETER: 9.12 m

