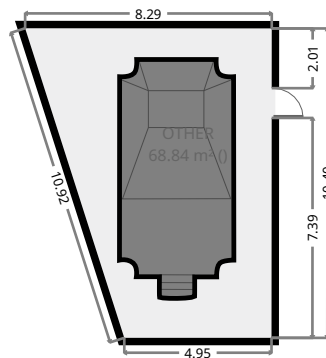
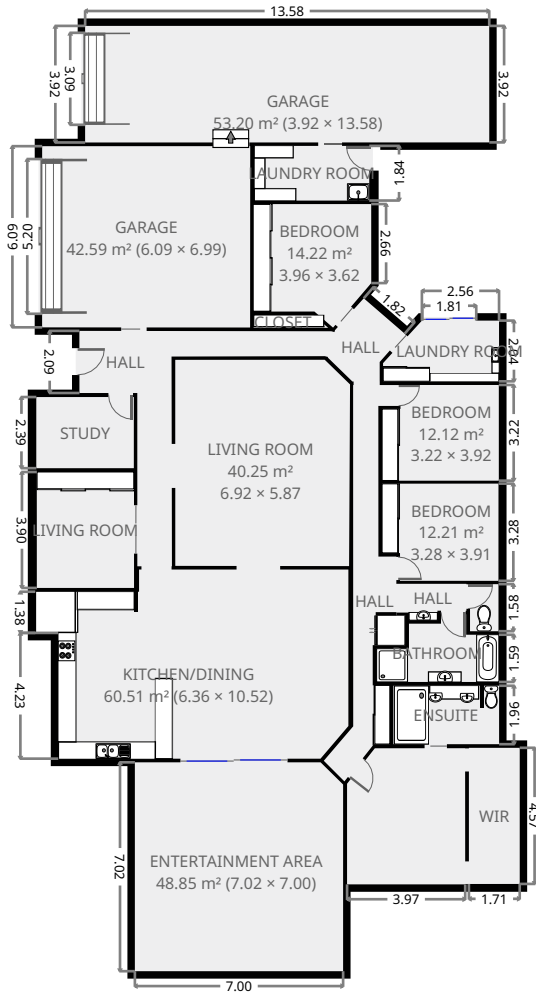
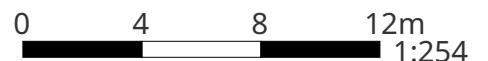


17 Constantia Crescent

Ground Floor



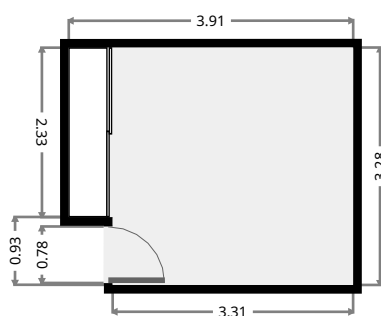
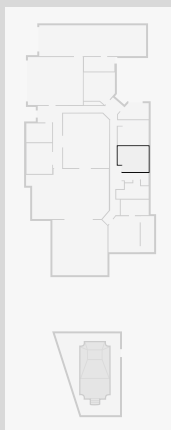
THIS FLOORPLAN IS PROVIDED WITHOUT WARRANTY OF ANY KIND. SENSOPIA DISCLAIMS ANY WARRANTY INCLUDING, WITHOUT LIMITATION, SATISFACTORY QUALITY OR ACCURACY OF DIMENSIONS.



17 Constantia Crescent

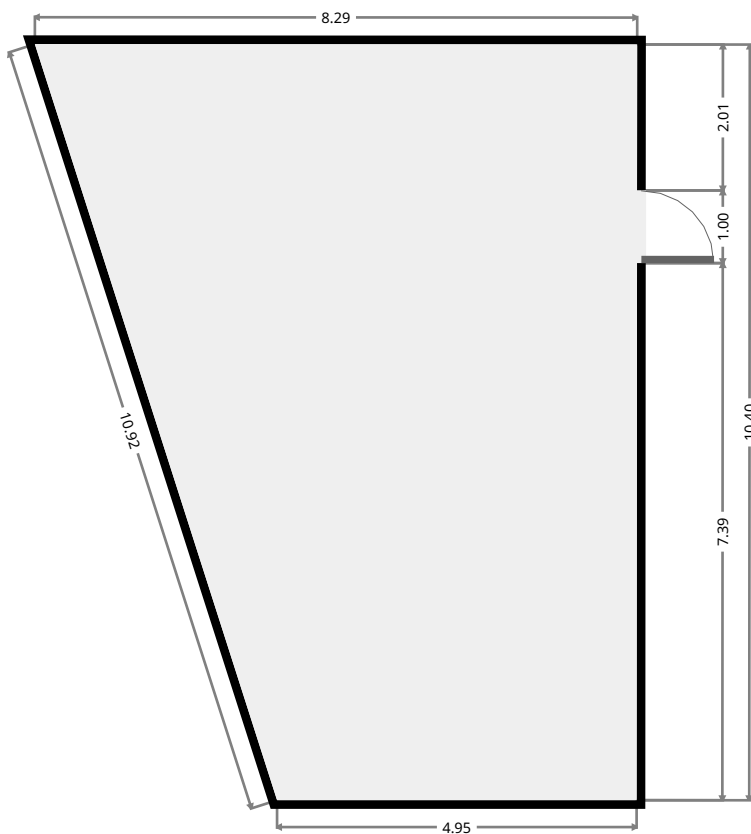
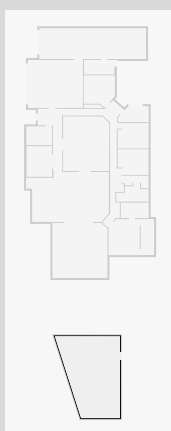
Bedroom

Width: 3.28 m
Length: 3.91 m
Area: 12.21 m²
Perimeter: 14.36 m



Other

Width: 0.00 m
Length: 10.92 m
Area: 68.84 m²
Perimeter: 34.56 m

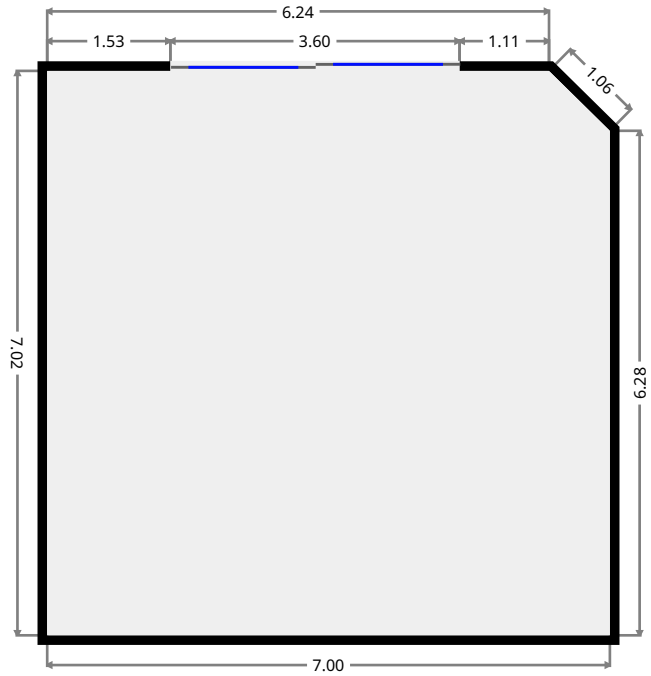
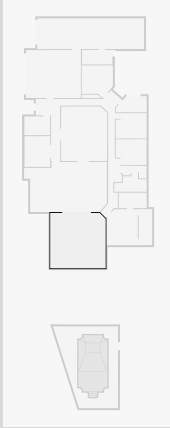


THIS FLOORPLAN IS PROVIDED WITHOUT WARRANTY OF ANY KIND. SENSOPIA DISCLAIMS ANY WARRANTY INCLUDING, WITHOUT LIMITATION, SATISFACTORY QUALITY OR ACCURACY OF DIMENSIONS.

17 Constantia Crescent

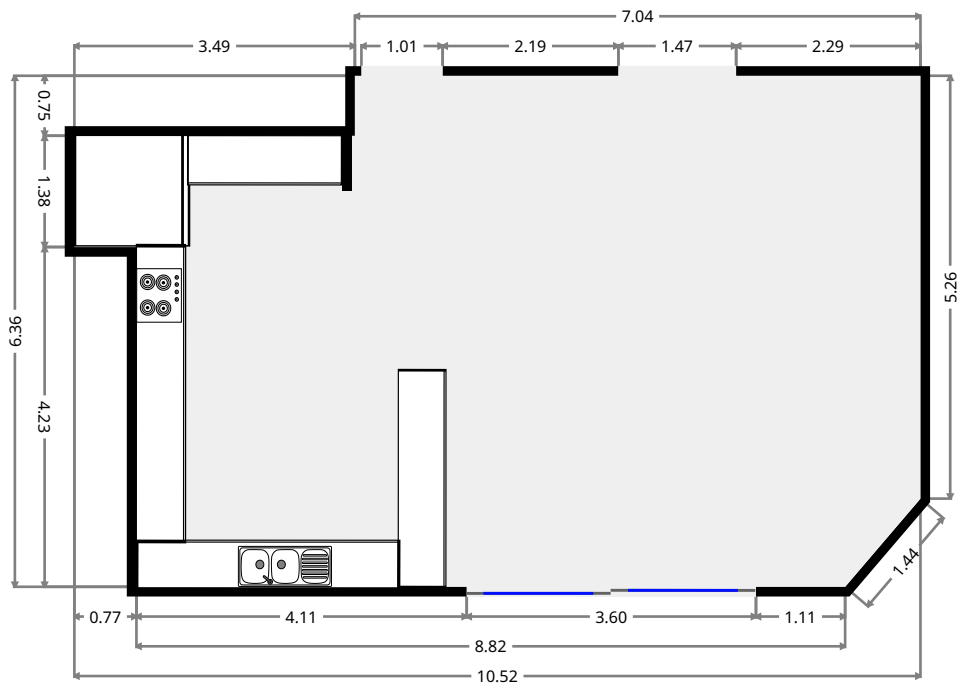
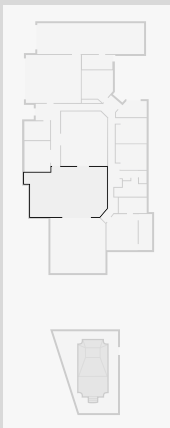
Entertainment Area

Width: 7.00 m
 Length: 7.02 m
 Area: 48.85 m²
 Perimeter: 27.60 m



Kitchen/Dining

Width: 6.36 m
 Length: 10.52 m
 Area: 60.51 m²
 Perimeter: 33.17 m



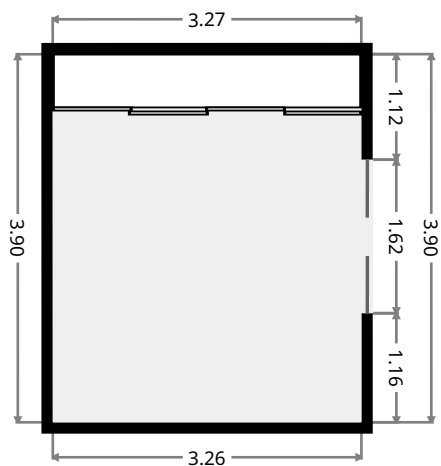
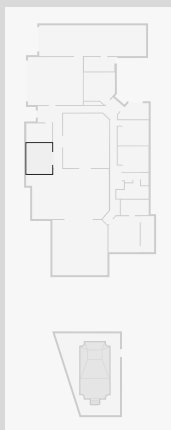
THIS FLOORPLAN IS PROVIDED WITHOUT WARRANTY OF ANY KIND. SENSOPIA DISCLAIMS ANY WARRANTY INCLUDING, WITHOUT LIMITATION, SATISFACTORY QUALITY OR ACCURACY OF DIMENSIONS.



17 Constantia Crescent

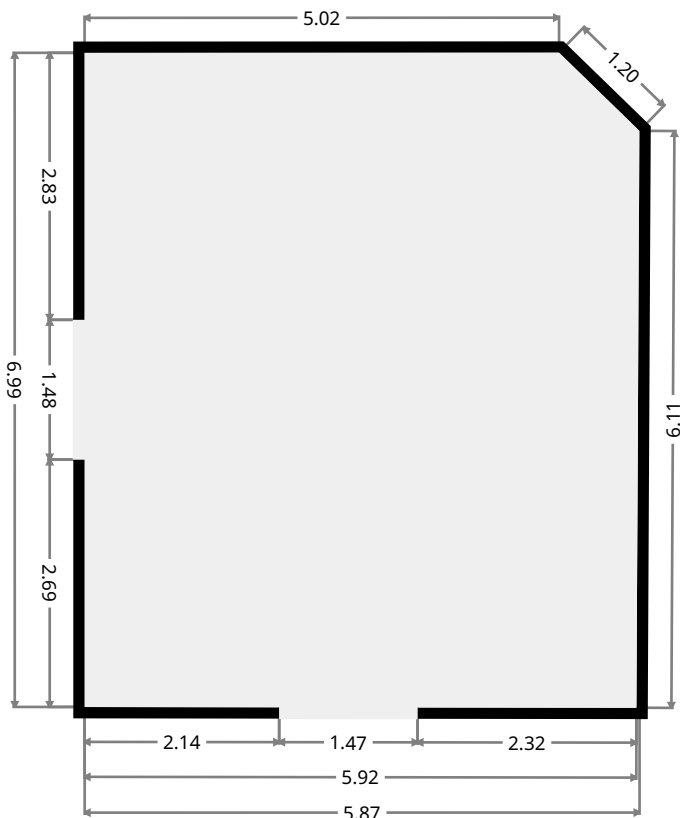
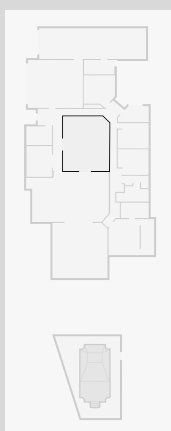
Living Room

Width: 3.26 m
 Length: 3.90 m
 Area: 12.73 m²
 Perimeter: 14.33 m



Living Room

Width: 5.87 m
 Length: 6.92 m
 Area: 40.25 m²
 Perimeter: 25.08 m

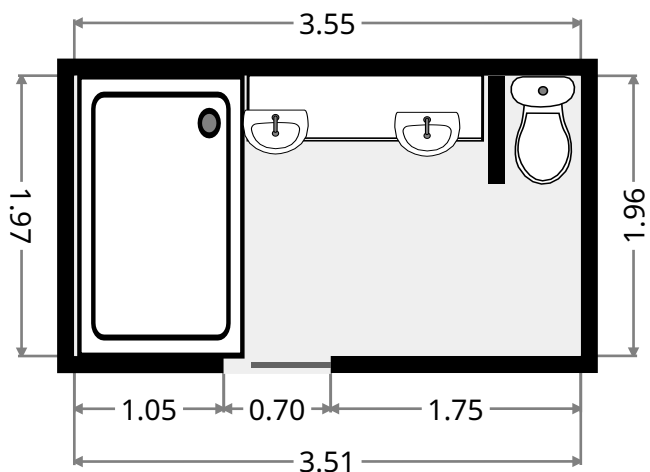
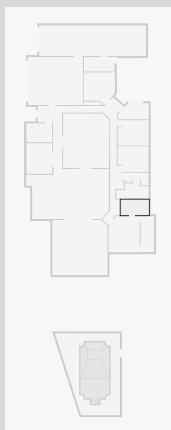


THIS FLOORPLAN IS PROVIDED WITHOUT WARRANTY OF ANY KIND. SENSOPIA DISCLAIMS ANY WARRANTY INCLUDING, WITHOUT LIMITATION, SATISFACTORY QUALITY OR ACCURACY OF DIMENSIONS.

17 Constantia Crescent

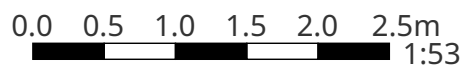
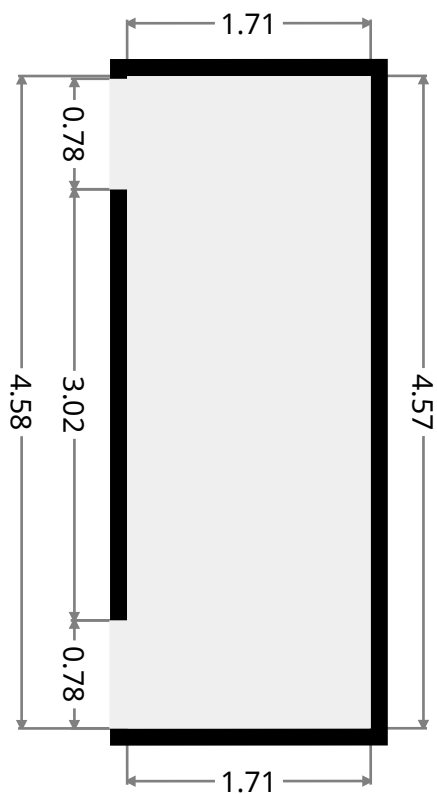
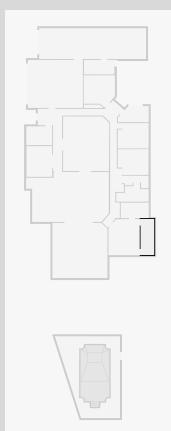
Ensuite

Width: 1.97 m
Length: 3.55 m
Area: 6.98 m²
Perimeter: 11.03 m



WIR

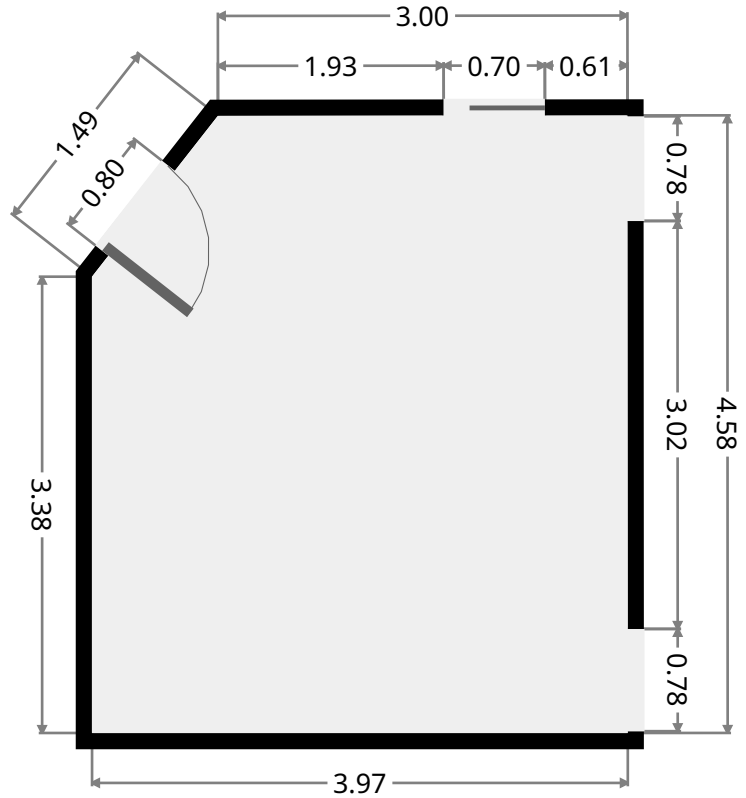
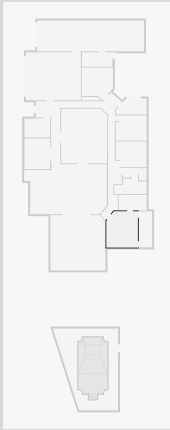
Width: 1.71 m
Length: 4.57 m
Area: 7.81 m²
Perimeter: 12.57 m



17 Constantia Crescent

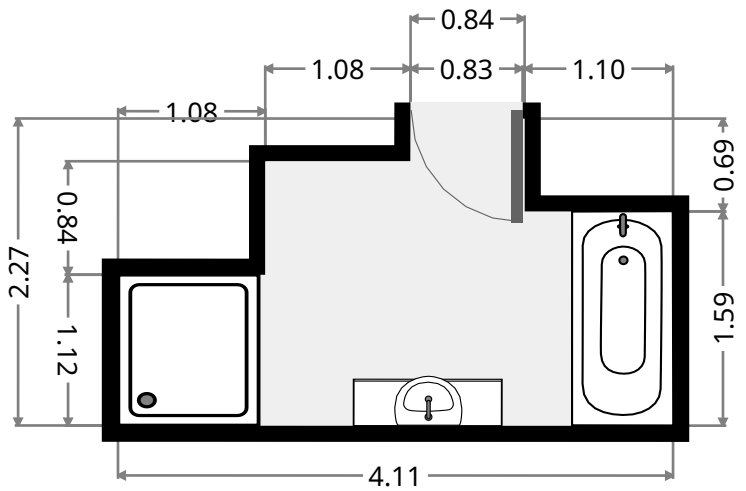
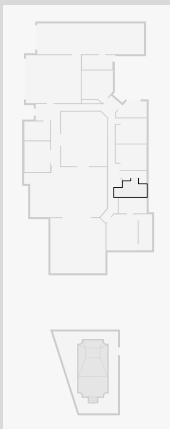
Master Bedroom

Width: 3.97 m
 Length: 4.58 m
 Area: 17.60 m²
 Perimeter: 16.48 m
 Ceiling Height: 2.17 m

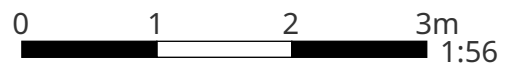


Bathroom

Width: 2.27 m
 Length: 4.11 m
 Area: 7.00 m²
 Perimeter: 12.78 m
 Ceiling Height: 2.17 m



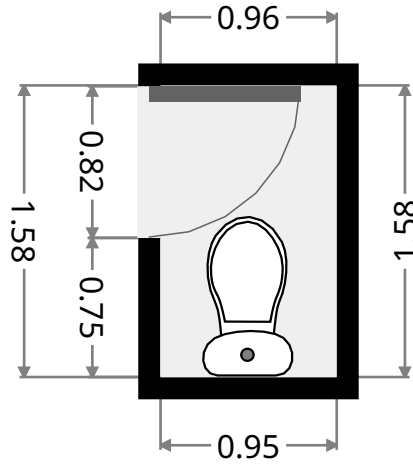
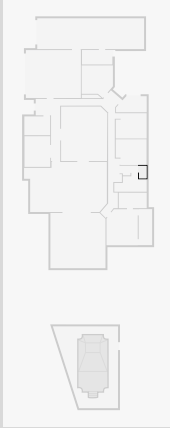
THIS FLOORPLAN IS PROVIDED WITHOUT WARRANTY OF ANY KIND. SENSOPIA DISCLAIMS ANY WARRANTY INCLUDING, WITHOUT LIMITATION, SATISFACTORY QUALITY OR ACCURACY OF DIMENSIONS.



17 Constantia Crescent

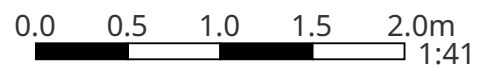
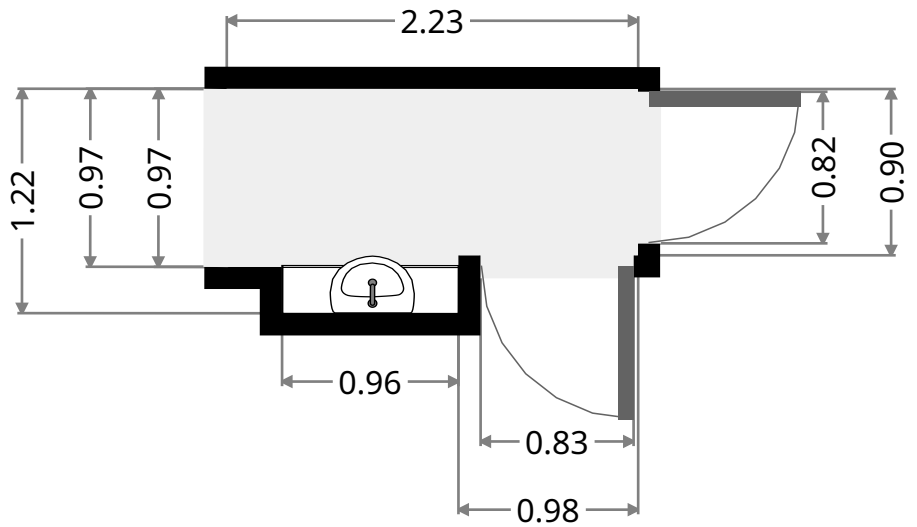
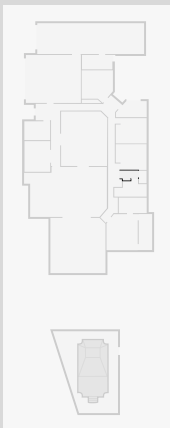
Toilet

Width: 0.95 m
 Length: 1.58 m
 Area: 1.51 m²
 Perimeter: 5.08 m



Hall

Width: 1.22 m
 Length: 2.23 m
 Area: 2.34 m²
 Perimeter: 6.90 m

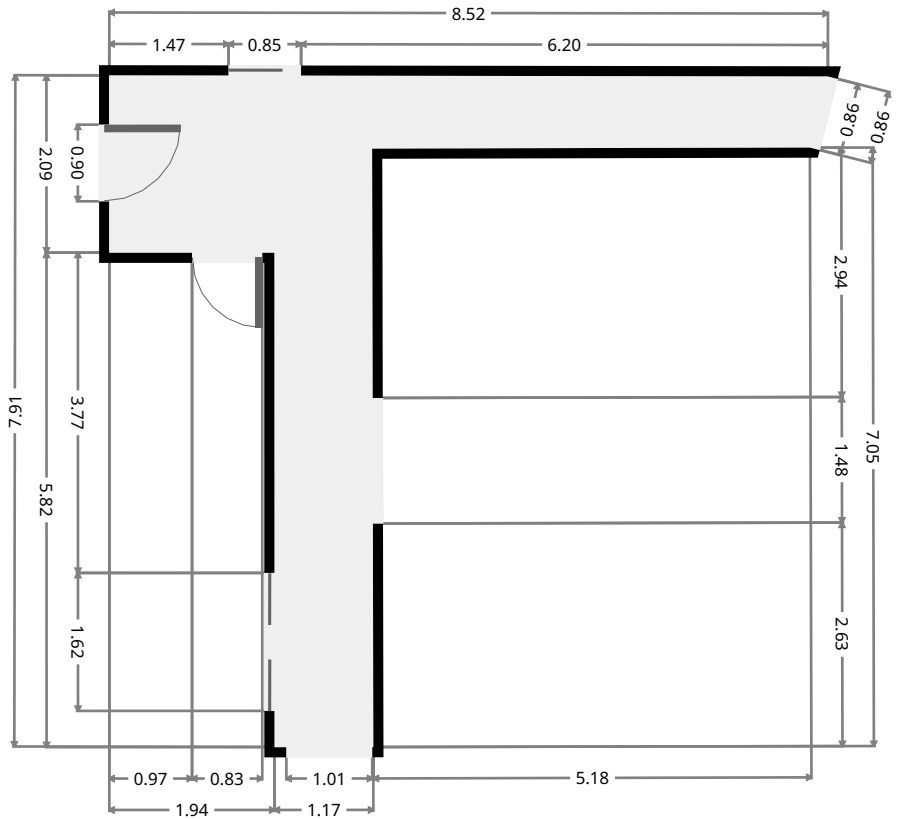
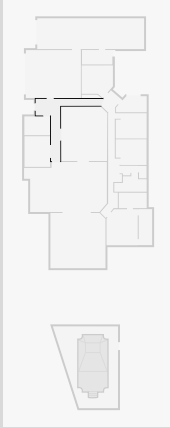


THIS FLOORPLAN IS PROVIDED WITHOUT WARRANTY OF ANY KIND. SENSOPIA DISCLAIMS ANY WARRANTY INCLUDING, WITHOUT LIMITATION, SATISFACTORY QUALITY OR ACCURACY OF DIMENSIONS.

17 Constantia Crescent

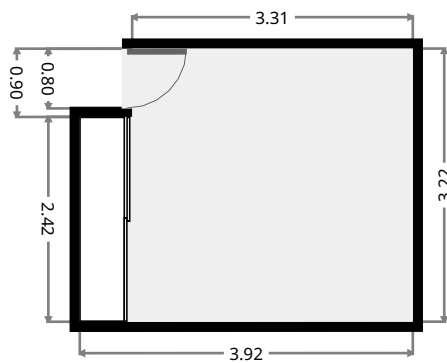
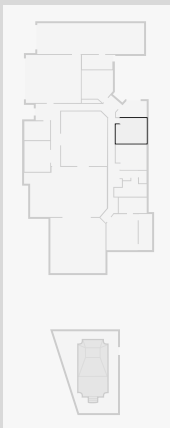
Hall

Width: 7.91 m
 Length: 8.46 m
 Area: 17.65 m²
 Perimeter: 32.55 m



Bedroom

Width: 3.22 m
 Length: 3.92 m
 Area: 12.12 m²
 Perimeter: 14.28 m



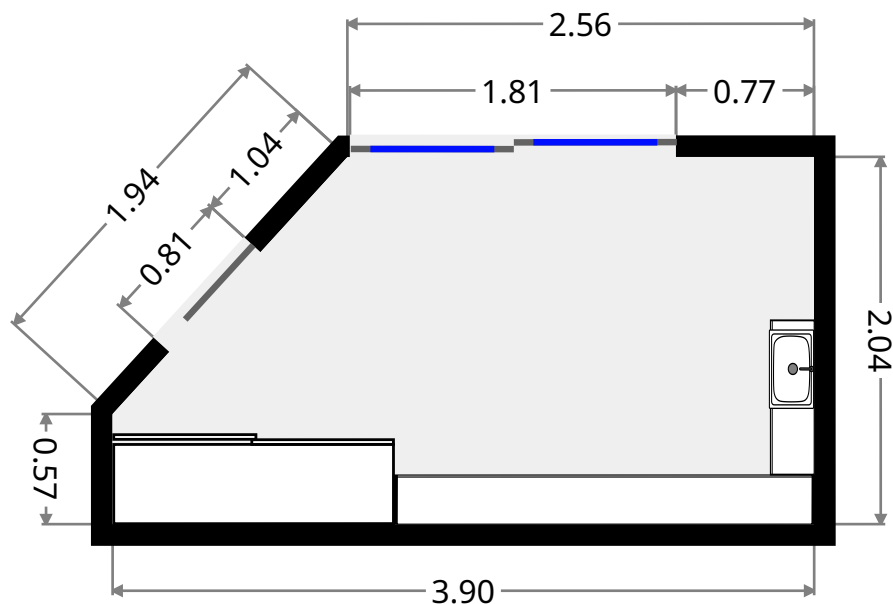
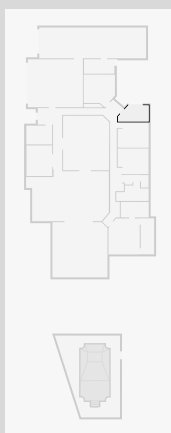
THIS FLOORPLAN IS PROVIDED WITHOUT WARRANTY OF ANY KIND. SENSOPIA DISCLAIMS ANY WARRANTY INCLUDING, WITHOUT LIMITATION, SATISFACTORY QUALITY OR ACCURACY OF DIMENSIONS.



17 Constantia Crescent

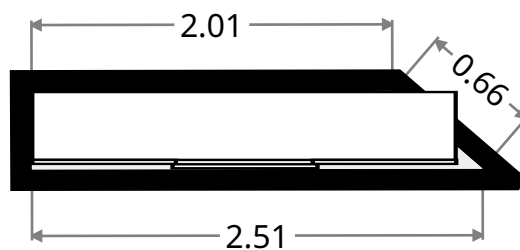
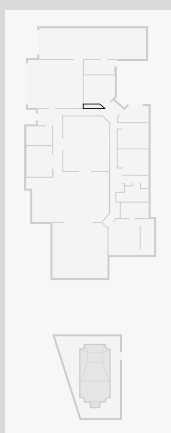
Laundry Room

Width: 2.04 m
 Length: 3.90 m
 Area: 7.02 m²
 Perimeter: 11.08 m
 Ceiling Height: 2.17 m



Closet

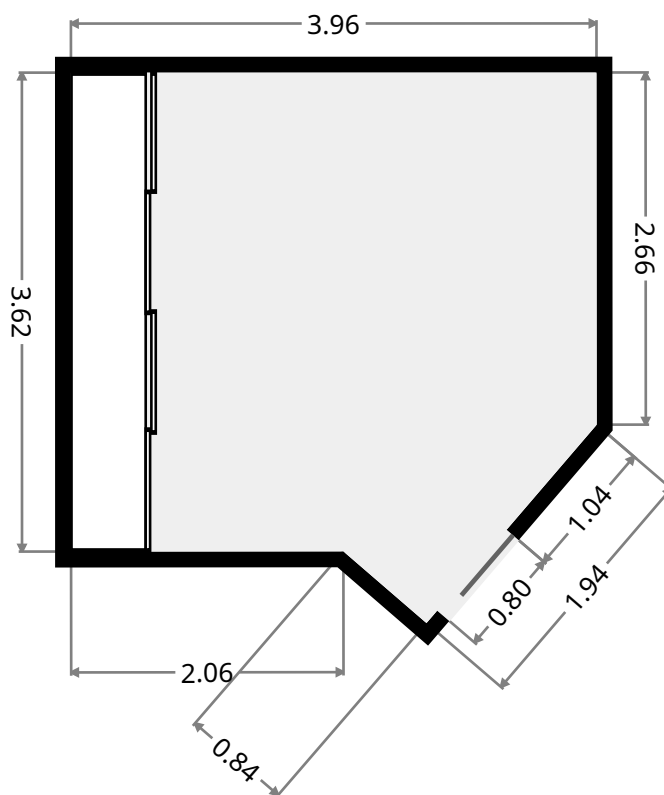
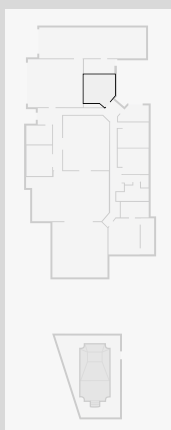
Width: 0.43 m
 Length: 2.51 m
 Area: 0.98 m²
 Perimeter: 5.60 m



17 Constantia Crescent

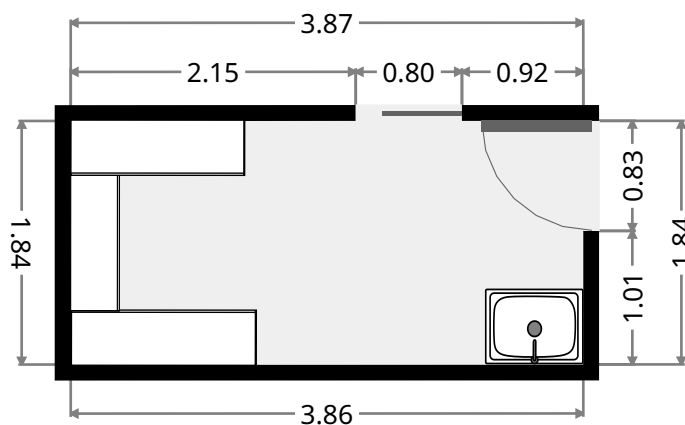
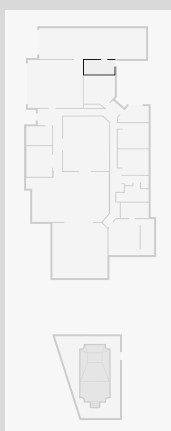
Bedroom

Width: 3.62 m
 Length: 3.96 m
 Area: 14.22 m²
 Perimeter: 15.09 m
 Ceiling Height: 2.17 m



Laundry Room

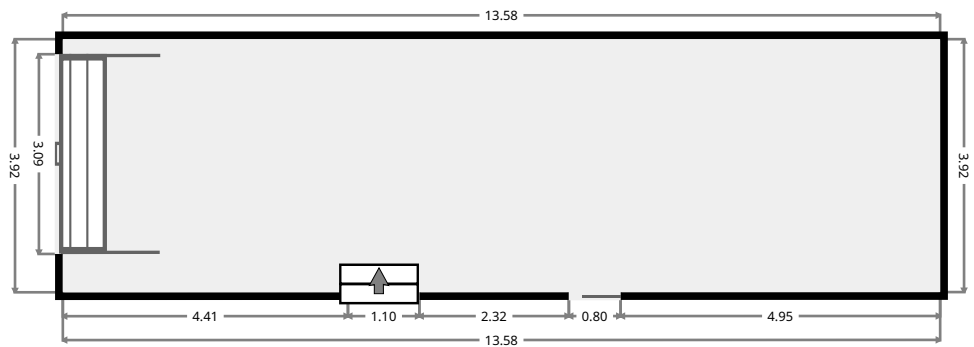
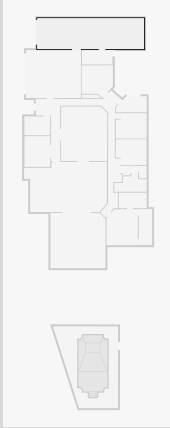
Width: 1.84 m
 Length: 3.86 m
 Area: 7.10 m²
 Perimeter: 11.41 m



17 Constantia Crescent

Garage

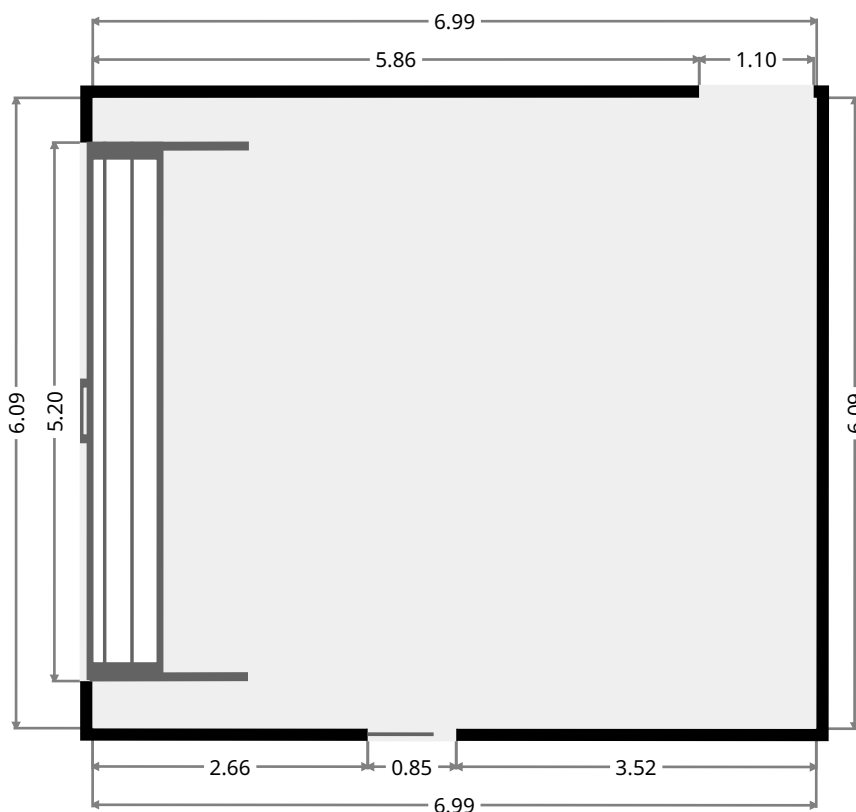
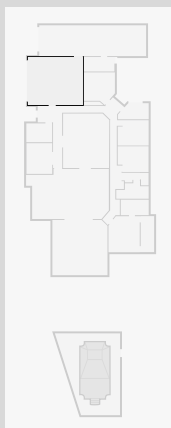
Width: 3.92 m
Length: 13.58 m
Area: 53.20 m²
Perimeter: 35.00 m



17 Constantia Crescent

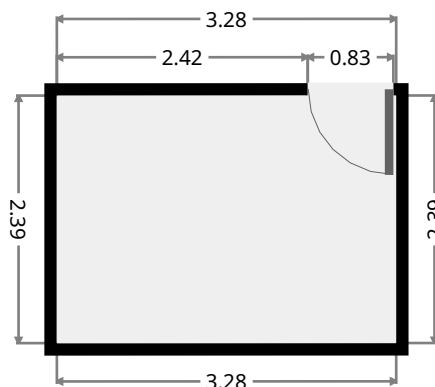
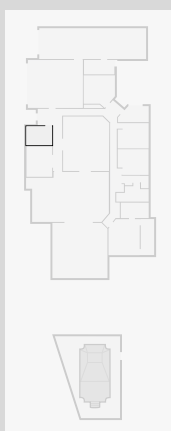
Garage

Width: 6.09 m
 Length: 6.99 m
 Area: 42.59 m²
 Perimeter: 26.17 m



Study

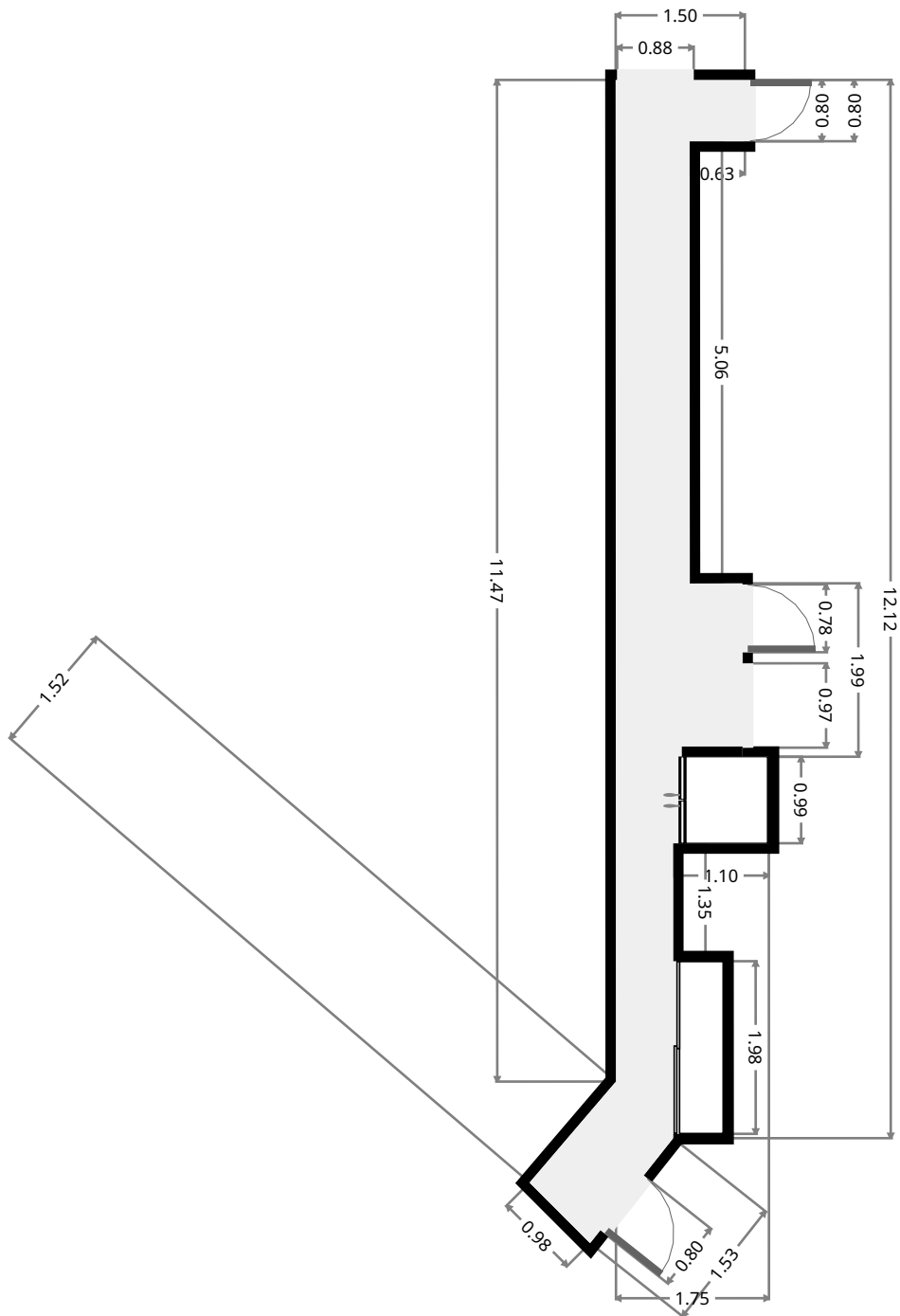
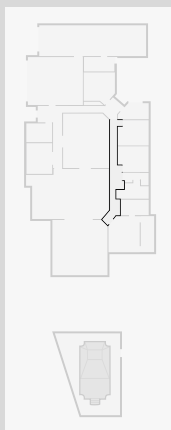
Width: 2.39 m
 Length: 3.28 m
 Area: 7.84 m²
 Perimeter: 11.34 m



17 Constantia Crescent

Hall

Width: 1.75 m
 Length: 12.12 m
 Area: 14.53 m²
 Perimeter: 32.89 m



THIS FLOORPLAN IS PROVIDED WITHOUT WARRANTY OF ANY KIND. SENSOPIA DISCLAIMS ANY WARRANTY INCLUDING, WITHOUT LIMITATION, SATISFACTORY QUALITY OR ACCURACY OF DIMENSIONS.

17 Constantia Crescent

Hall

Width: 1.85 m
Length: 2.37 m
Area: 4.24 m²
Perimeter: 8.21 m
Ceiling Height: 2.17 m

