

17 Constantia Crescent

SUBMITTED BY

Ray White Rockhampton Casey
stockers@cqoz.com

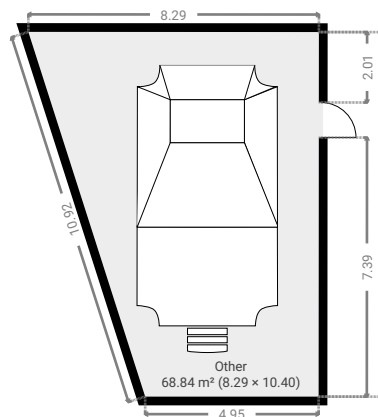
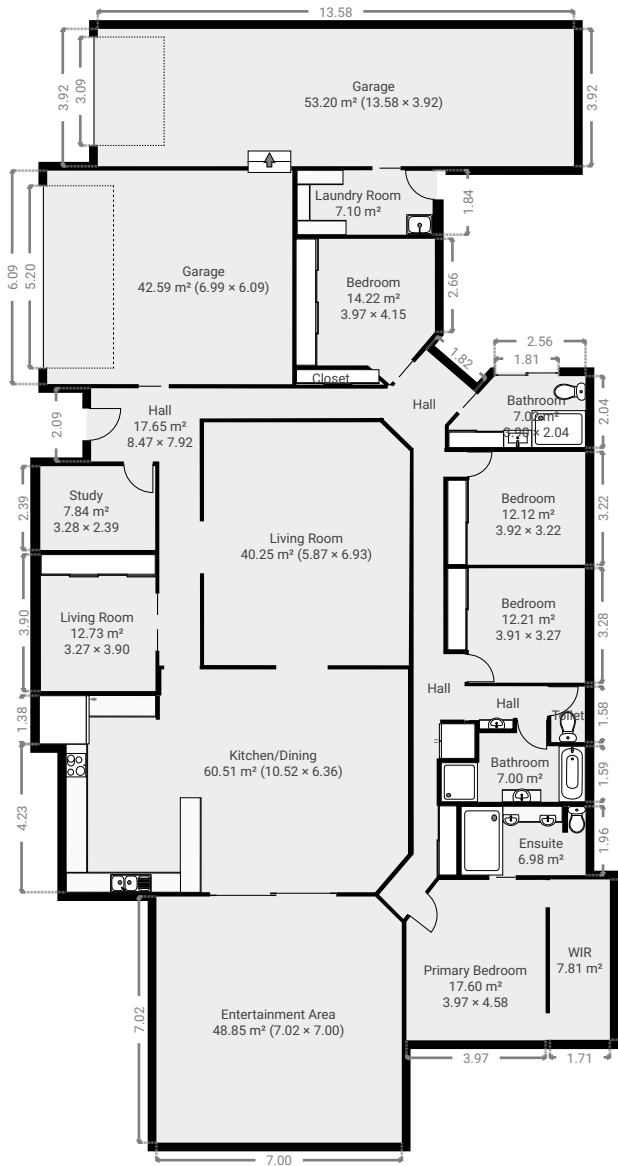
CREATED ON

2017-06-15

Floors

1

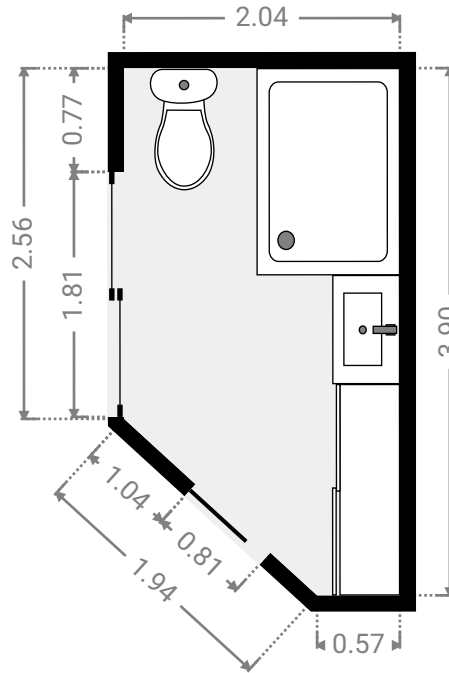
▼ Ground Floor



FLOORS: 1

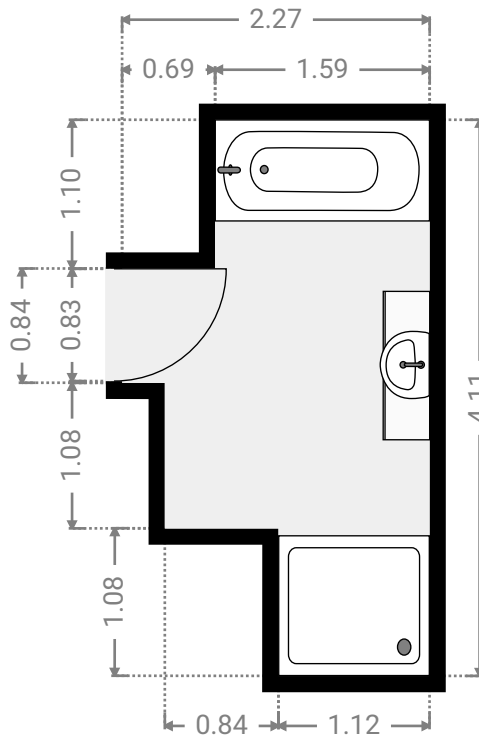
▼ **Bathroom**
Ground Floor

WIDTH: 2.04 m • LENGTH: 3.90 m • CEILING HEIGHT: 2.17 m
AREA: 7.02 m² • PERIMETER: 11.08 m



▼ **Bathroom**
Ground Floor

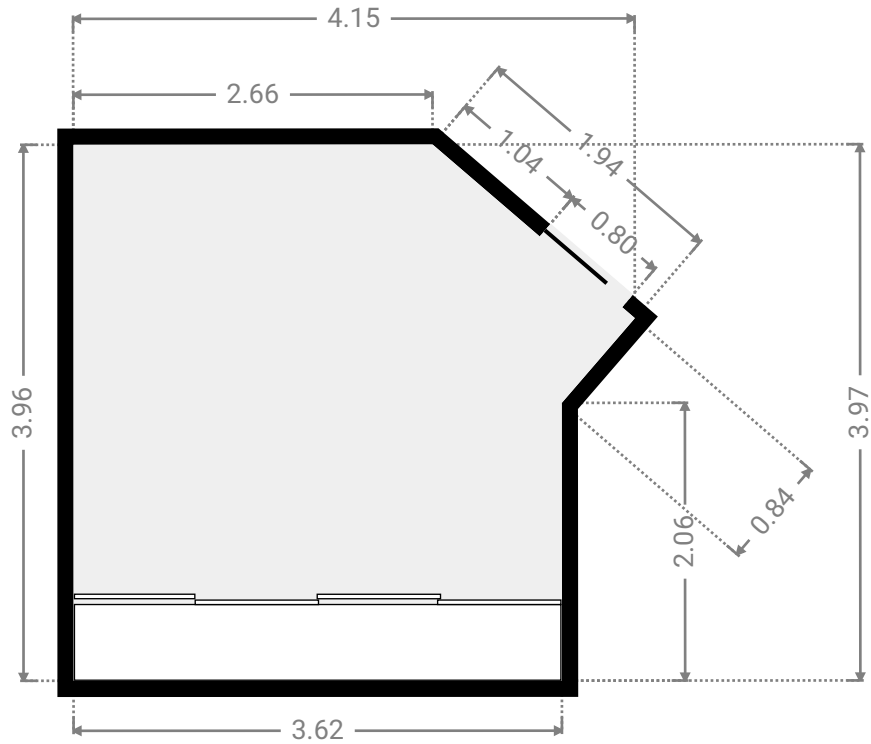
WIDTH: 2.27 m • LENGTH: 4.11 m • CEILING HEIGHT: 2.17 m
AREA: 7.00 m² • PERIMETER: 12.78 m



FLOORS: 1

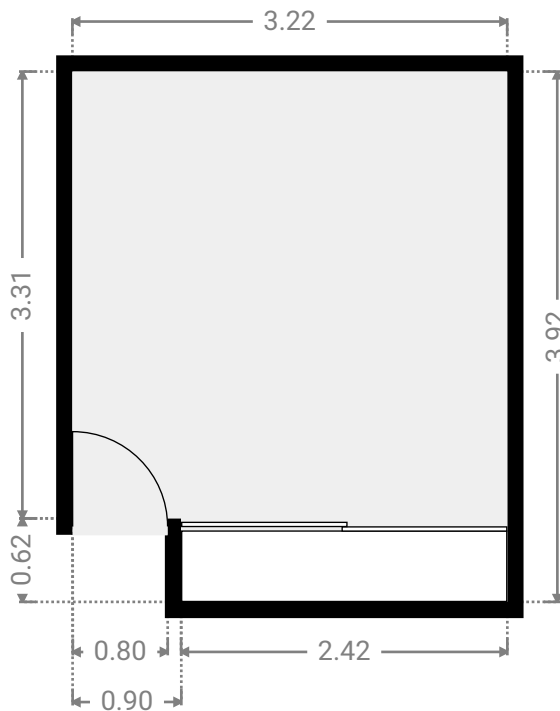
▼ **Bedroom**
Ground Floor

WIDTH: 4.15 m • LENGTH: 3.97 m • CEILING HEIGHT: 2.17 m
AREA: 14.22 m² • PERIMETER: 15.09 m



▼ **Bedroom**
Ground Floor

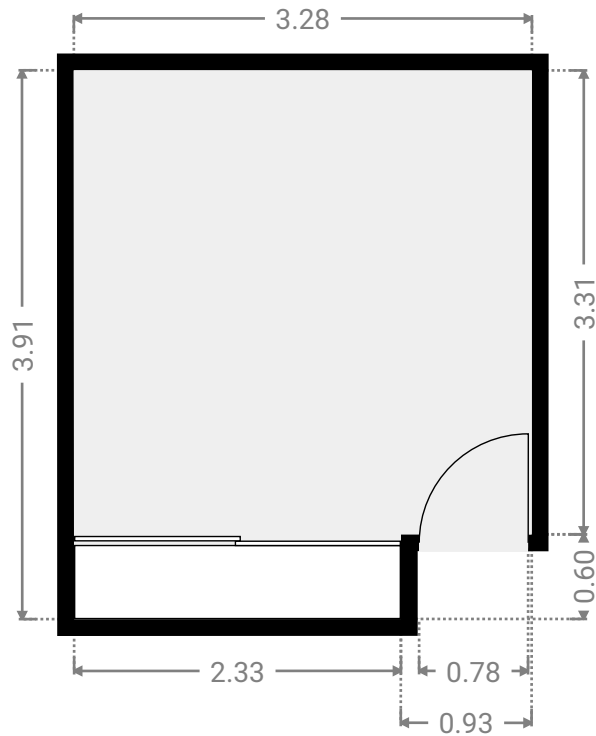
WIDTH: 3.22 m • LENGTH: 3.92 m
AREA: 12.12 m² • PERIMETER: 14.28 m



FLOORS: 1

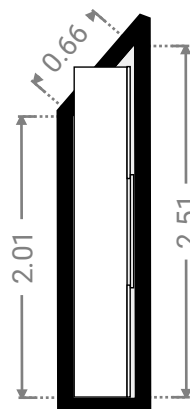
▼ Bedroom Ground Floor

WIDTH: 3.28 m • LENGTH: 3.91 m
AREA: 12.21 m² • PERIMETER: 14.36 m



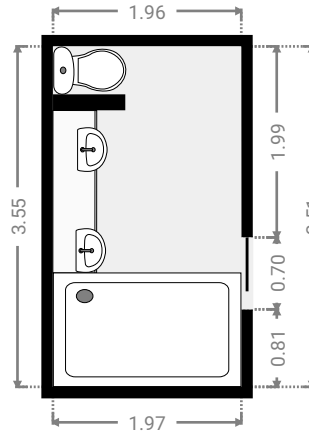
▼ Closet Ground Floor

WIDTH: 0.44 m • LENGTH: 2.50 m
AREA: 0.98 m² • PERIMETER: 5.60 m



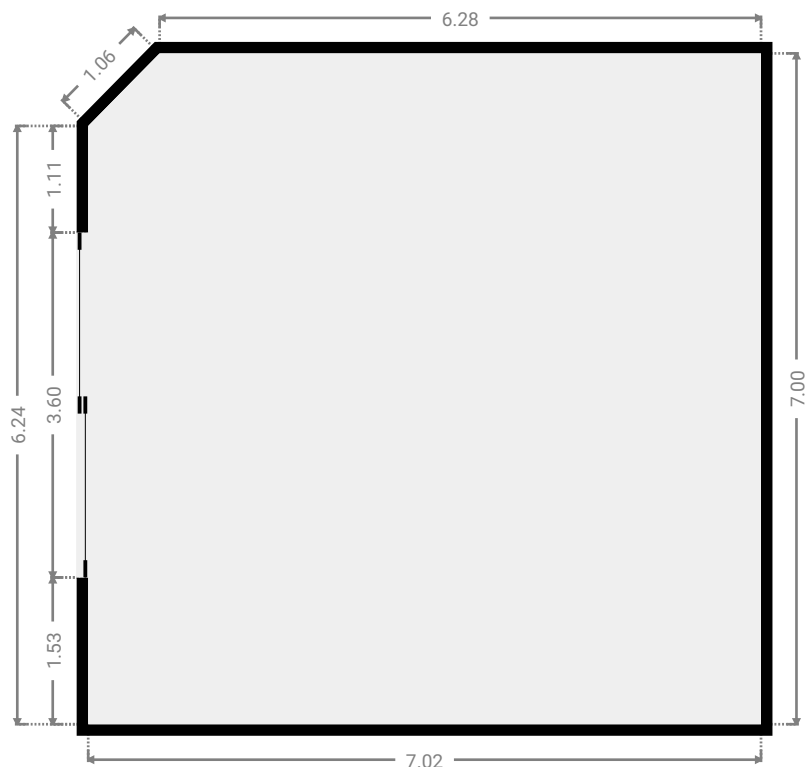
▼ Ensuite Ground Floor

WIDTH: 1.97 m • LENGTH: 3.55 m
AREA: 6.98 m² • PERIMETER: 11.03 m



▼ Entertainment Area Ground Floor

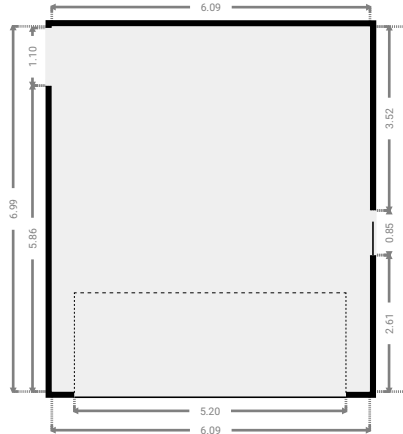
WIDTH: 7.02 m • LENGTH: 7.00 m
AREA: 48.85 m² • PERIMETER: 27.60 m



FLOORS: 1

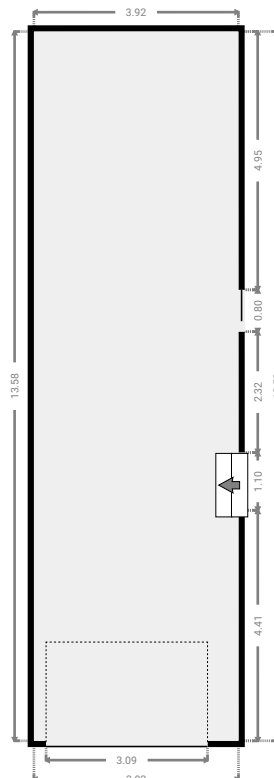
▼ Garage Ground Floor

WIDTH: 6.09 m • LENGTH: 6.99 m
AREA: 42.59 m² • PERIMETER: 26.17 m



▼ Garage Ground Floor

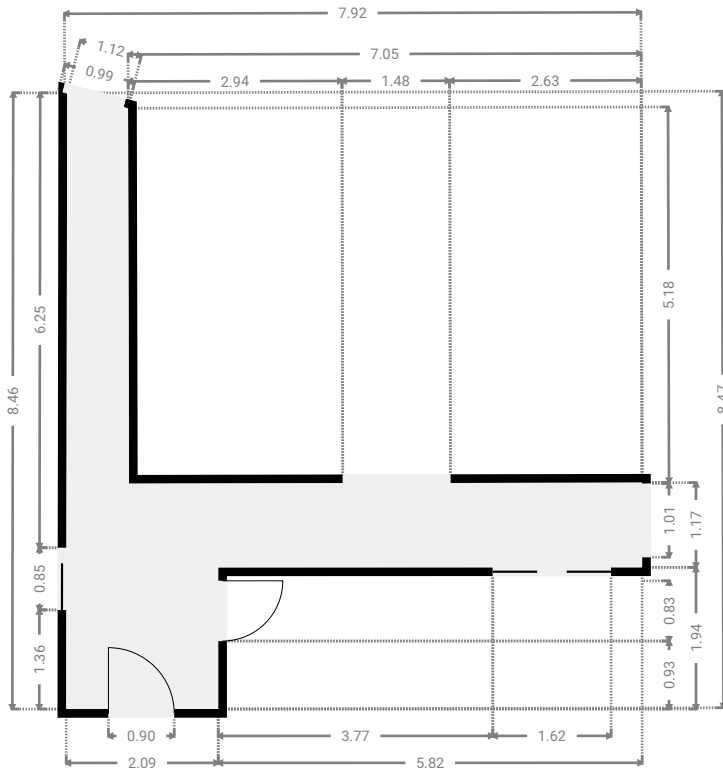
WIDTH: 3.92 m • LENGTH: 13.58 m
AREA: 53.20 m² • PERIMETER: 35.00 m



FLOORS: 1

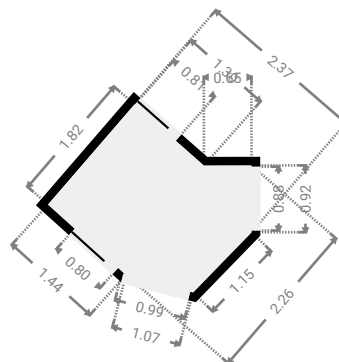
▼ Hall Ground Floor

WIDTH: 7.92 m • LENGTH: 8.47 m
AREA: 17.65 m² • PERIMETER: 32.55 m



▼ Hall Ground Floor

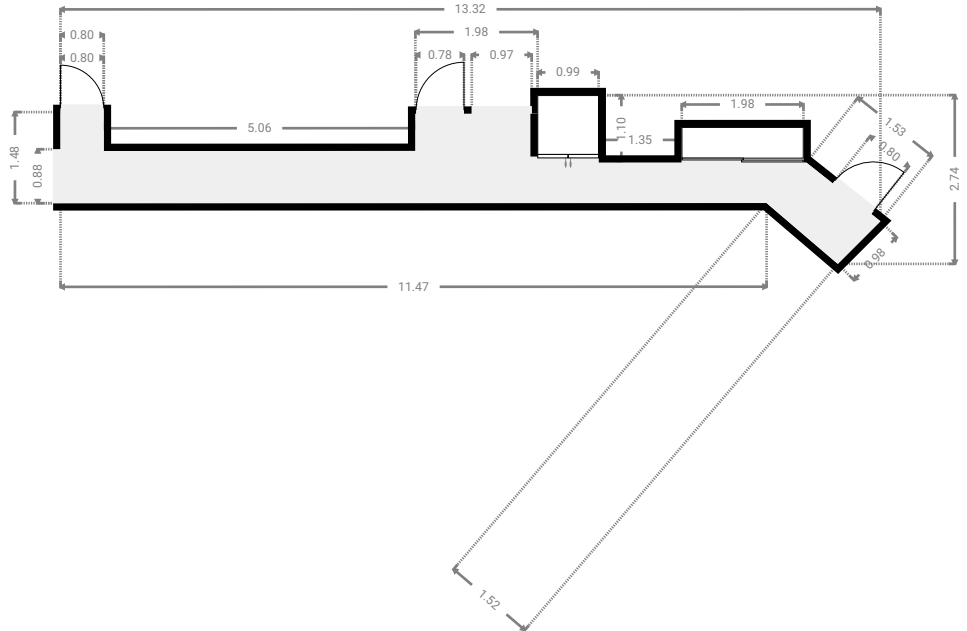
WIDTH: 2.37 m • LENGTH: 2.26 m • CEILING HEIGHT: 2.17 m
AREA: 4.24 m² • PERIMETER: 8.21 m



FLOORS: 1

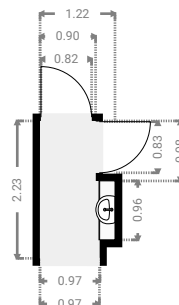
▼ Hall Ground Floor

WIDTH: 13.32 m • LENGTH: 2.74 m
AREA: 14.53 m² • PERIMETER: 32.89 m



▼ Hall Ground Floor

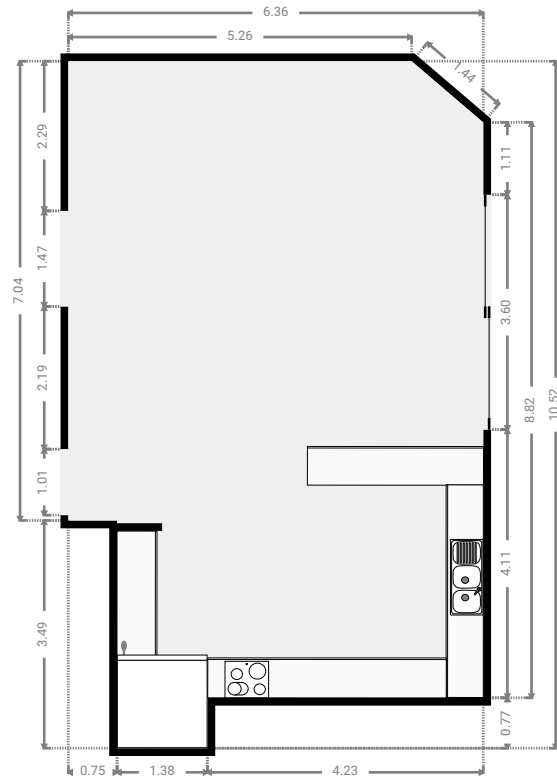
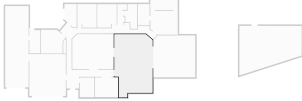
WIDTH: 1.22 m • LENGTH: 2.23 m
AREA: 2.34 m² • PERIMETER: 6.90 m



FLOORS: 1

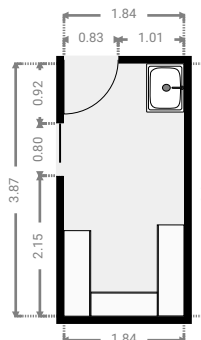
▼ Kitchen/Dining Ground Floor

WIDTH: 6.36 m • LENGTH: 10.52 m
AREA: 60.51 m² • PERIMETER: 33.17 m



▼ Laundry Room Ground Floor

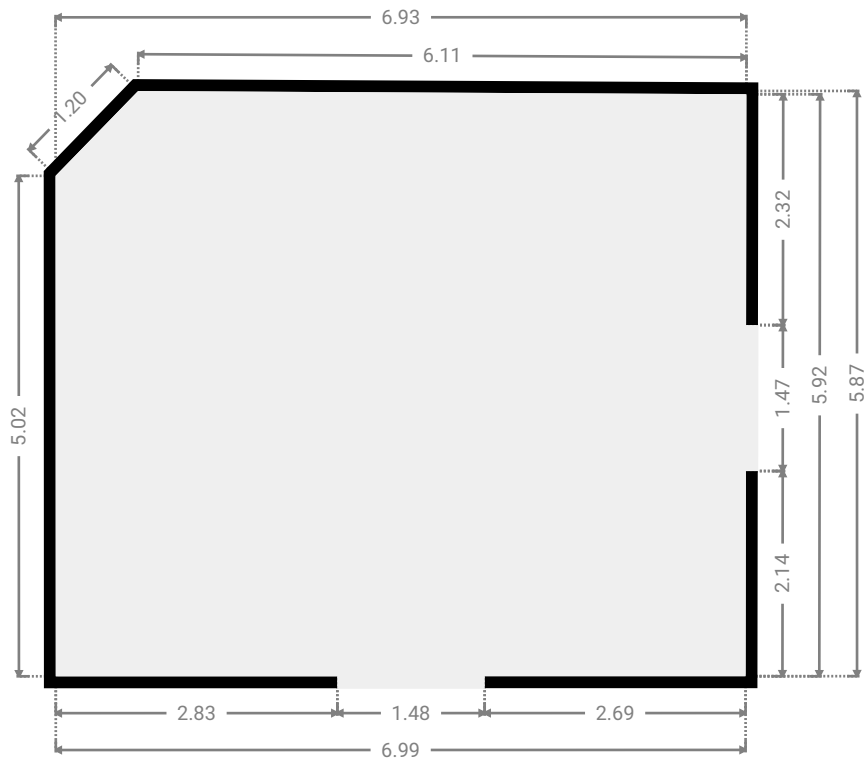
WIDTH: 1.84 m • LENGTH: 3.86 m
AREA: 7.10 m² • PERIMETER: 11.41 m



FLOORS: 1

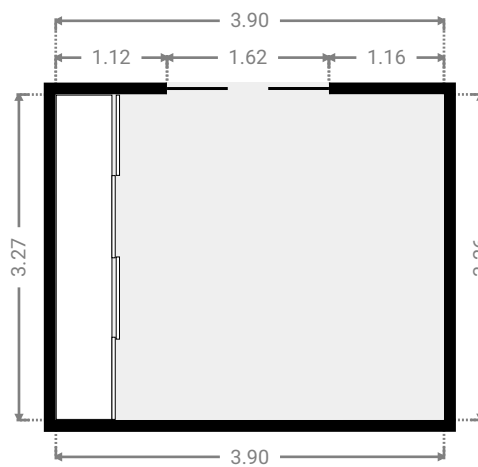
▼ Living Room Ground Floor

WIDTH: 6.93 m • LENGTH: 5.87 m
AREA: 40.25 m² • PERIMETER: 25.08 m



▼ Living Room Ground Floor

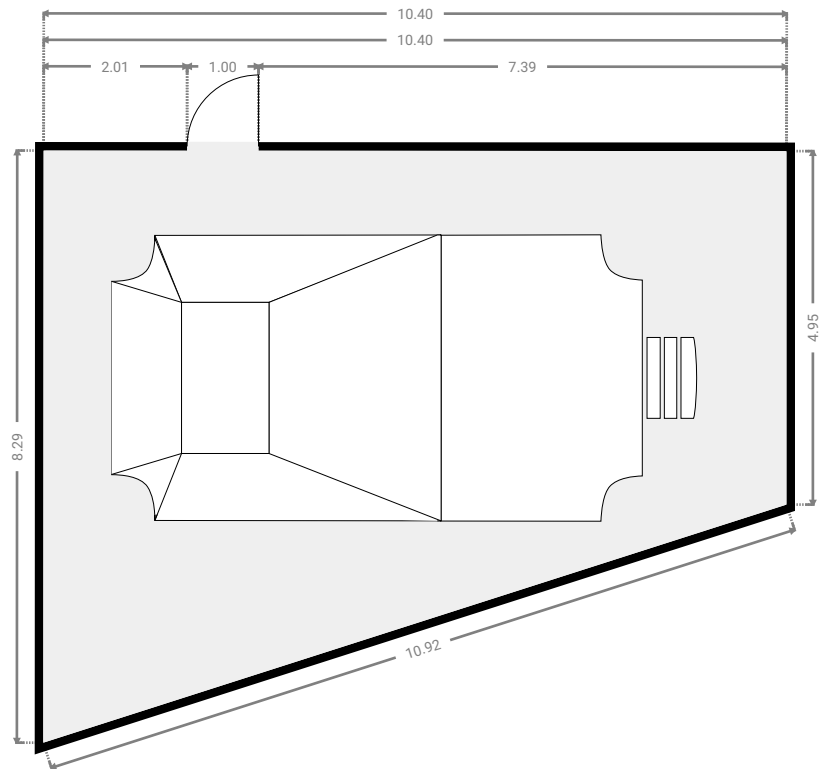
WIDTH: 3.90 m • LENGTH: 3.26 m
AREA: 12.73 m² • PERIMETER: 14.33 m



FLOORS: 1

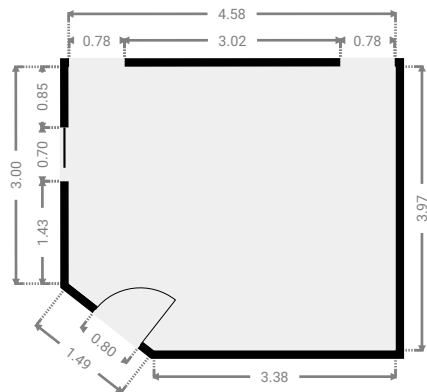
▼ Other Ground Floor

WIDTH: 10.40 m • LENGTH: 8.29 m
AREA: 68.84 m² • PERIMETER: 34.56 m



▼ Primary Bedroom Ground Floor

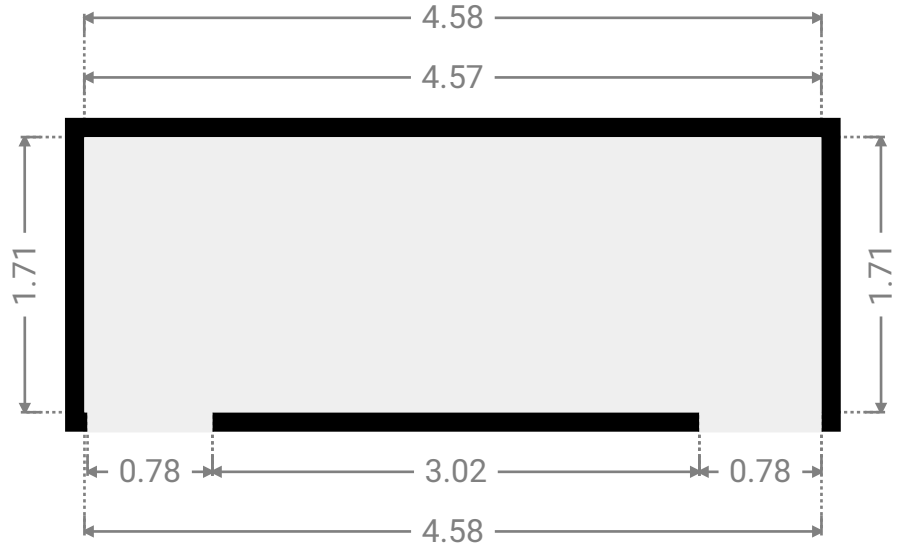
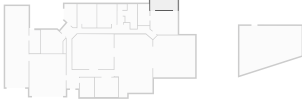
WIDTH: 4.58 m • LENGTH: 3.97 m • CEILING HEIGHT: 2.17 m
AREA: 17.60 m² • PERIMETER: 16.48 m



FLOORS: 1

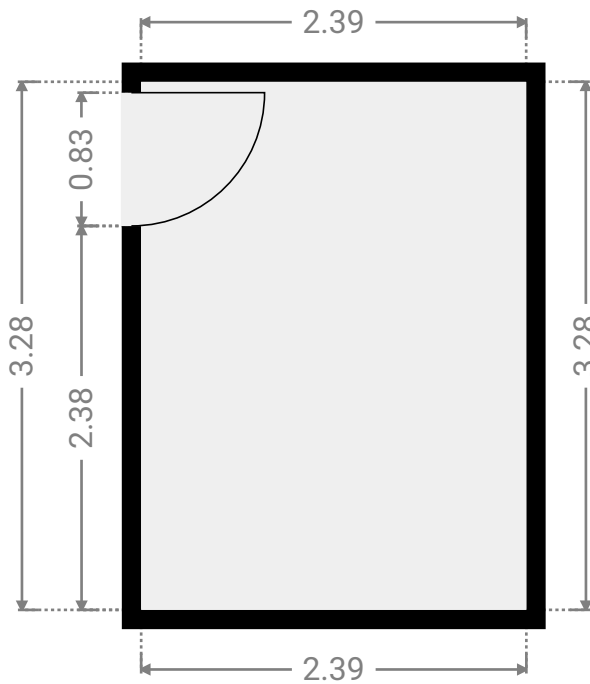
▼ WIR
Ground Floor

WIDTH: 4.58 m • LENGTH: 1.71 m
AREA: 7.81 m² • PERIMETER: 12.57 m



▼ Study
Ground Floor

WIDTH: 2.39 m • LENGTH: 3.28 m
AREA: 7.84 m² • PERIMETER: 11.34 m



▼ Toilet Ground Floor

WIDTH: 1.58 m • LENGTH: 0.95 m
AREA: 1.51 m² • PERIMETER: 5.08 m

