

165 Emmerson Drive

SUBMITTED BY

Ray White Rockhampton Casey
stockers@cqoz.com

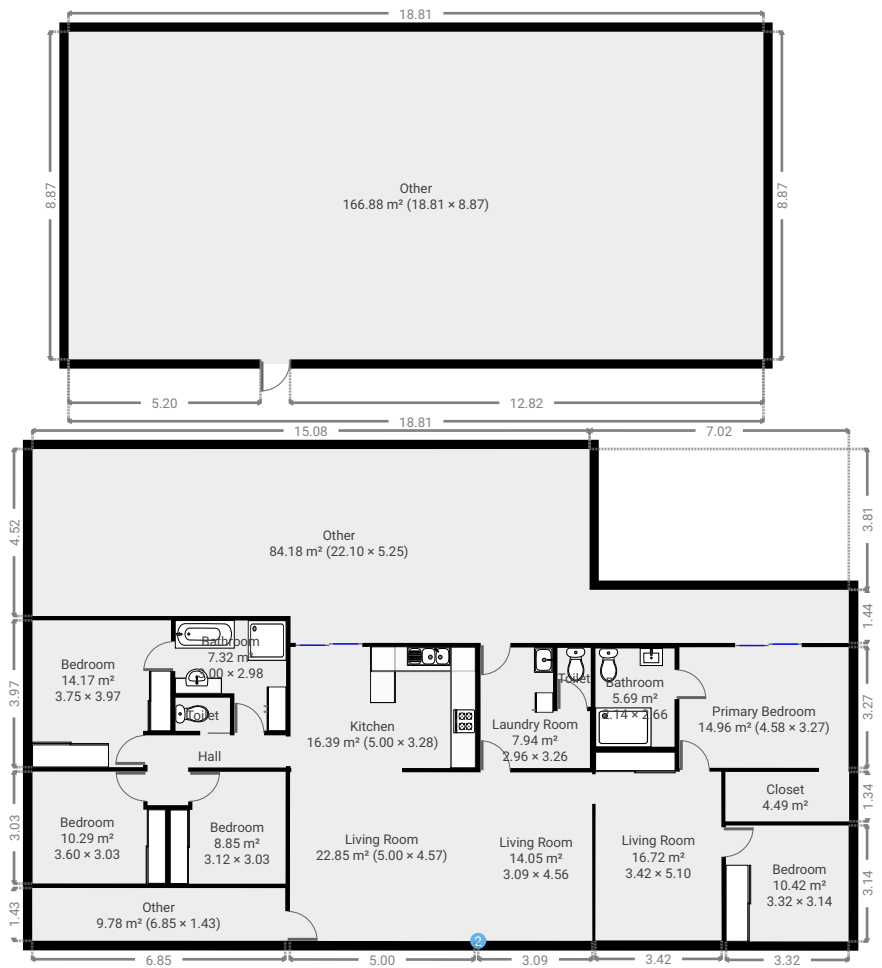
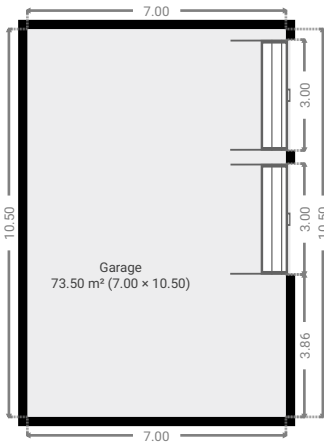
CREATED ON

2022-03-29

Floors

1

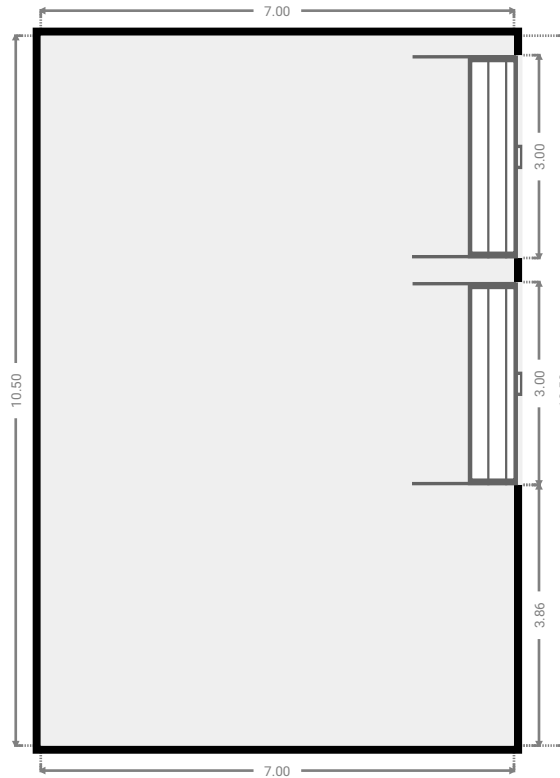
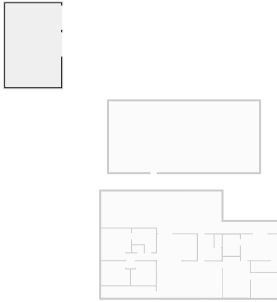
▼ Ground Floor



FLOORS: 1

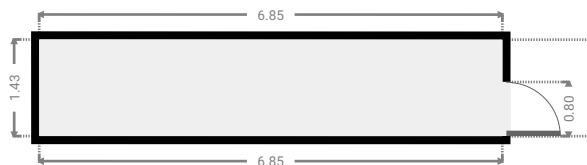
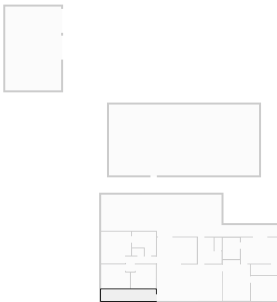
▼ **Garage**
Ground Floor

WIDTH: 7.00 m • LENGTH: 10.50 m
AREA: 73.50 m² • PERIMETER: 35.00 m



▼ **Other**
Ground Floor

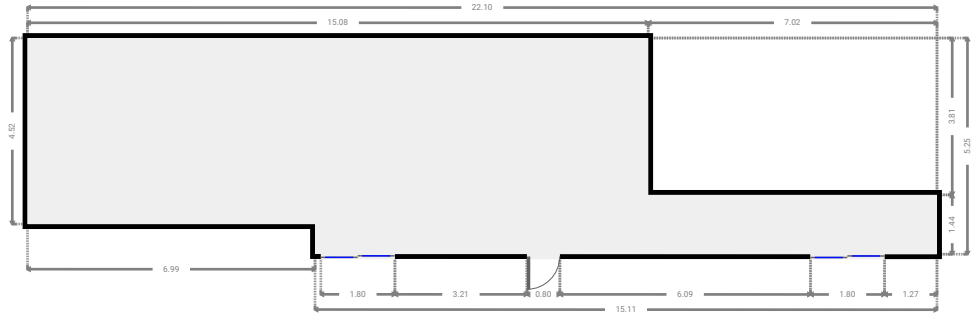
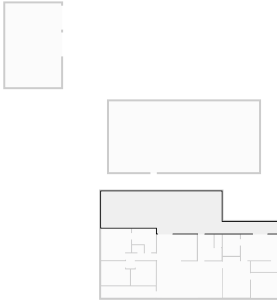
WIDTH: 6.85 m • LENGTH: 1.43 m
AREA: 9.78 m² • PERIMETER: 16.56 m



FLOORS: 1

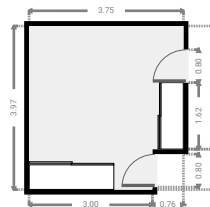
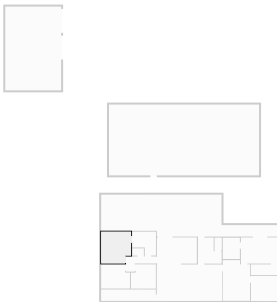
▼ **Other**
Ground Floor

WIDTH: 22.10 m • LENGTH: 5.25 m
AREA: 84.18 m² • PERIMETER: 54.70 m



▼ **Bedroom**
Ground Floor

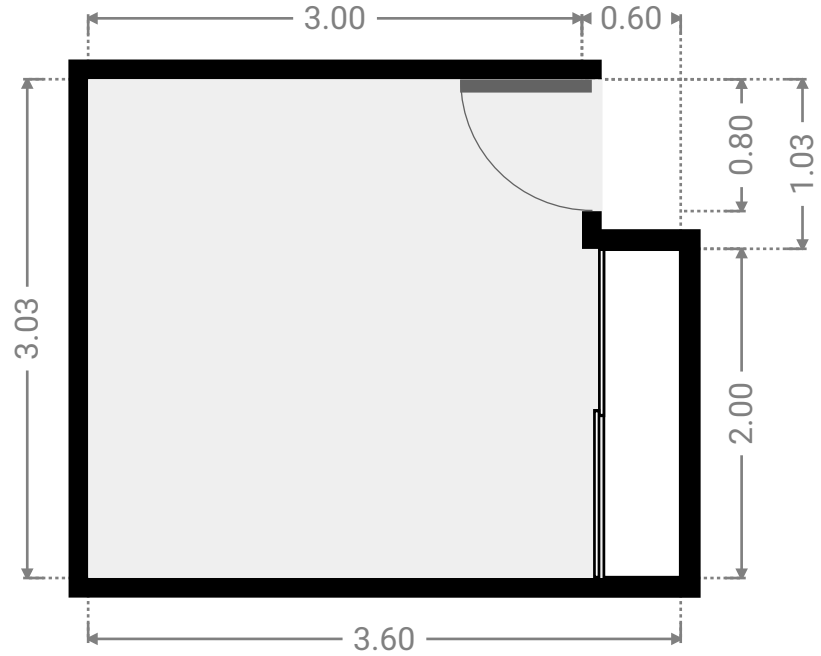
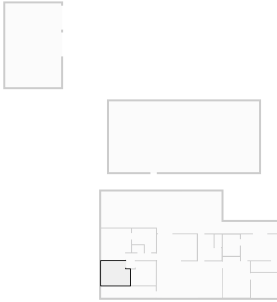
WIDTH: 3.75 m • LENGTH: 3.97 m
AREA: 14.17 m² • PERIMETER: 15.45 m



FLOORS: 1

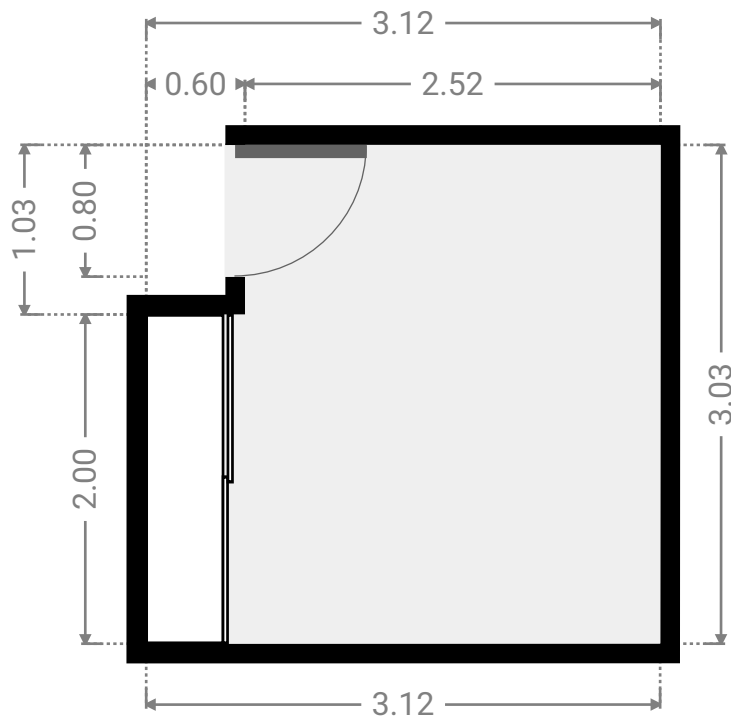
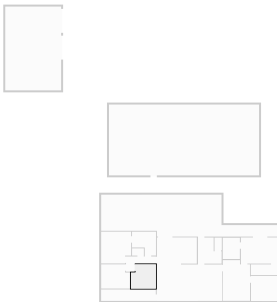
▼ **Bedroom**
Ground Floor

WIDTH: 3.60 m • LENGTH: 3.03 m
AREA: 10.29 m² • PERIMETER: 13.26 m



▼ **Bedroom**
Ground Floor

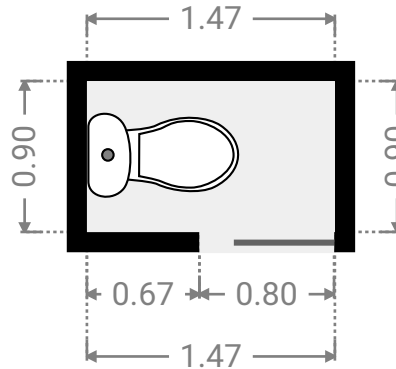
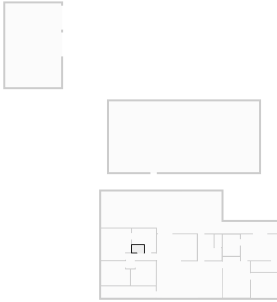
WIDTH: 3.12 m • LENGTH: 3.03 m
AREA: 8.85 m² • PERIMETER: 12.31 m



FLOORS: 1

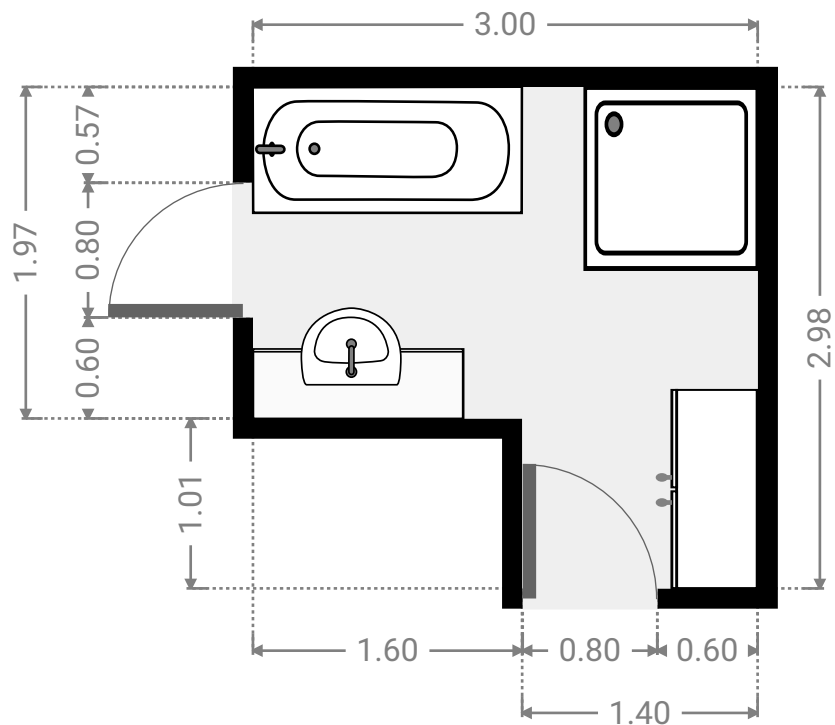
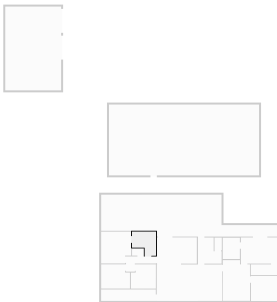
▼ Toilet
Ground Floor

WIDTH: 1.47 m • LENGTH: 0.90 m
AREA: 1.32 m² • PERIMETER: 4.74 m



▼ Bathroom
Ground Floor

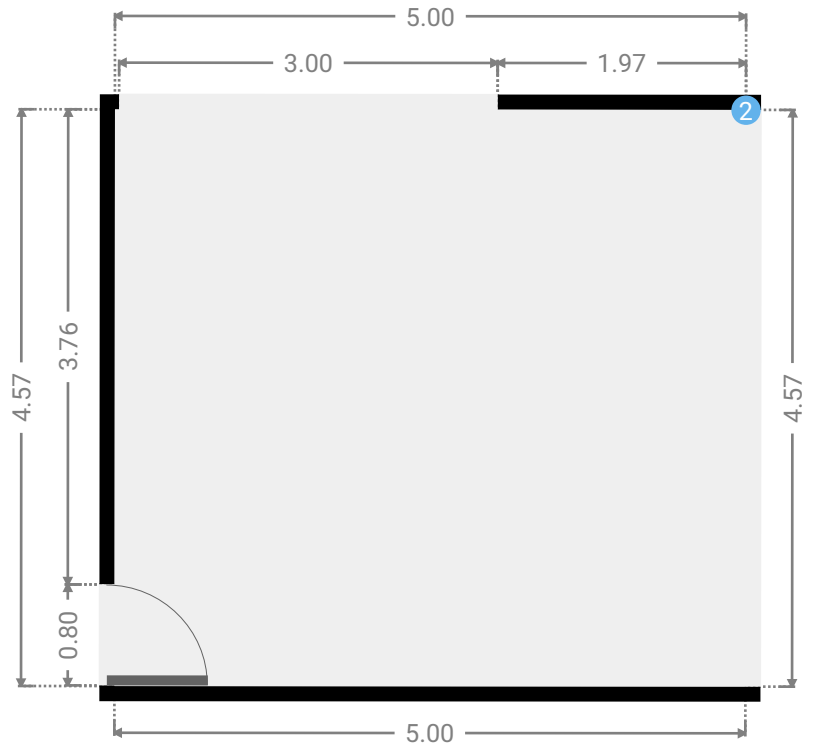
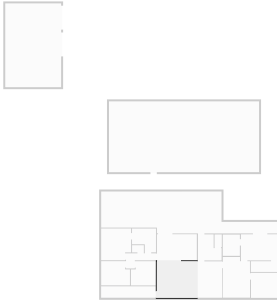
WIDTH: 3.00 m • LENGTH: 2.98 m
AREA: 7.32 m² • PERIMETER: 11.96 m



FLOORS: 1

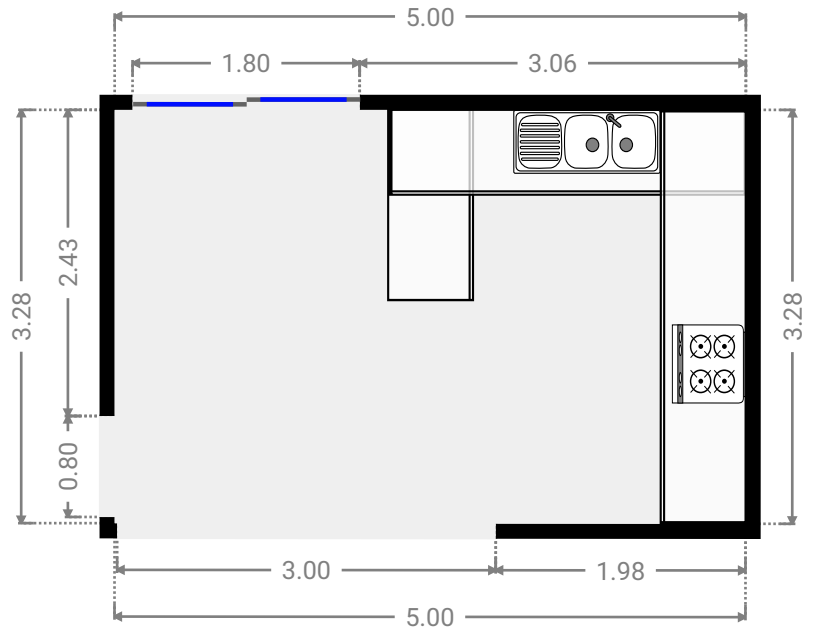
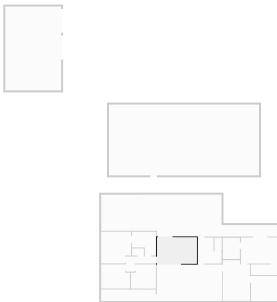
▼ **Living Room**
Ground Floor

WIDTH: 5.00 m • LENGTH: 4.57 m
AREA: 22.85 m² • PERIMETER: 19.14 m



▼ **Kitchen**
Ground Floor

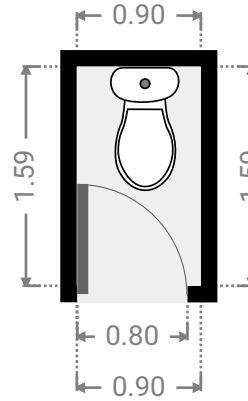
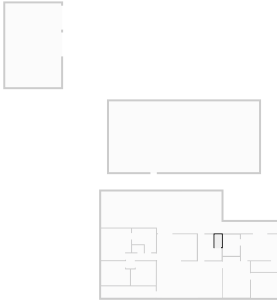
WIDTH: 5.00 m • LENGTH: 3.28 m
AREA: 16.39 m² • PERIMETER: 16.56 m



FLOORS: 1

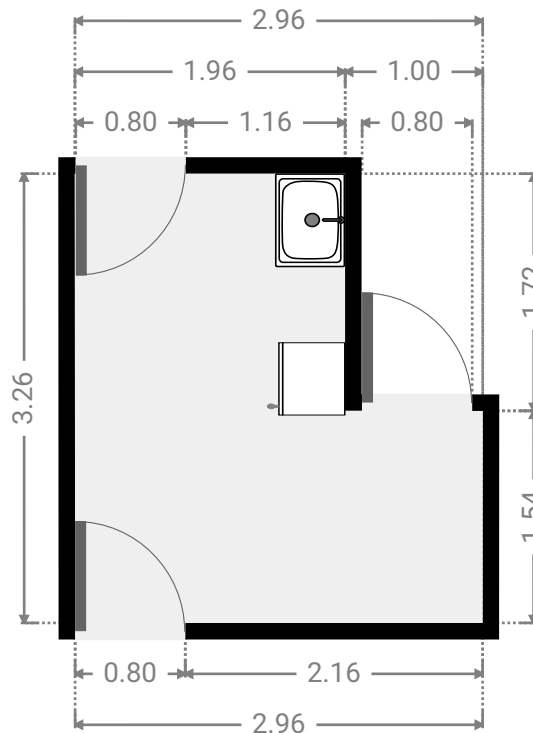
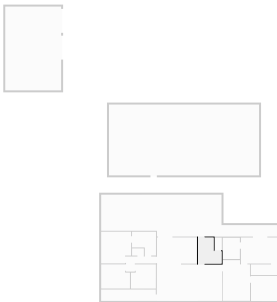
▼ **Toilet**
Ground Floor

WIDTH: 0.90 m • LENGTH: 1.59 m
AREA: 1.43 m² • PERIMETER: 4.99 m



▼ **Laundry Room**
Ground Floor

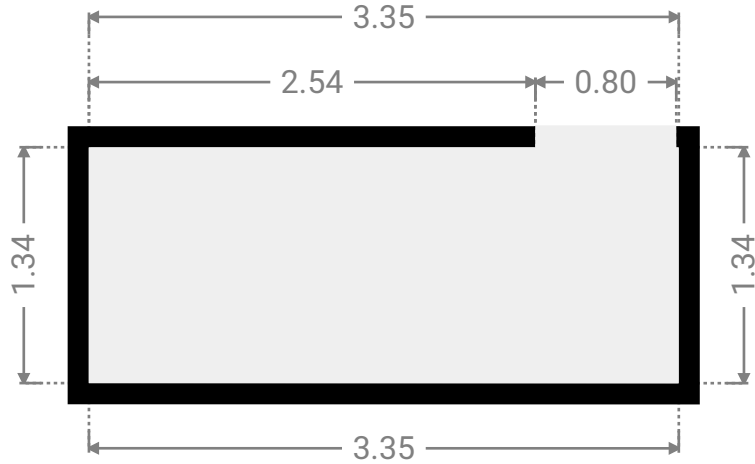
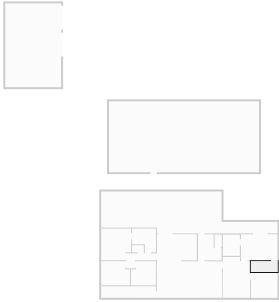
WIDTH: 2.96 m • LENGTH: 3.26 m
AREA: 7.94 m² • PERIMETER: 12.45 m



FLOORS: 1

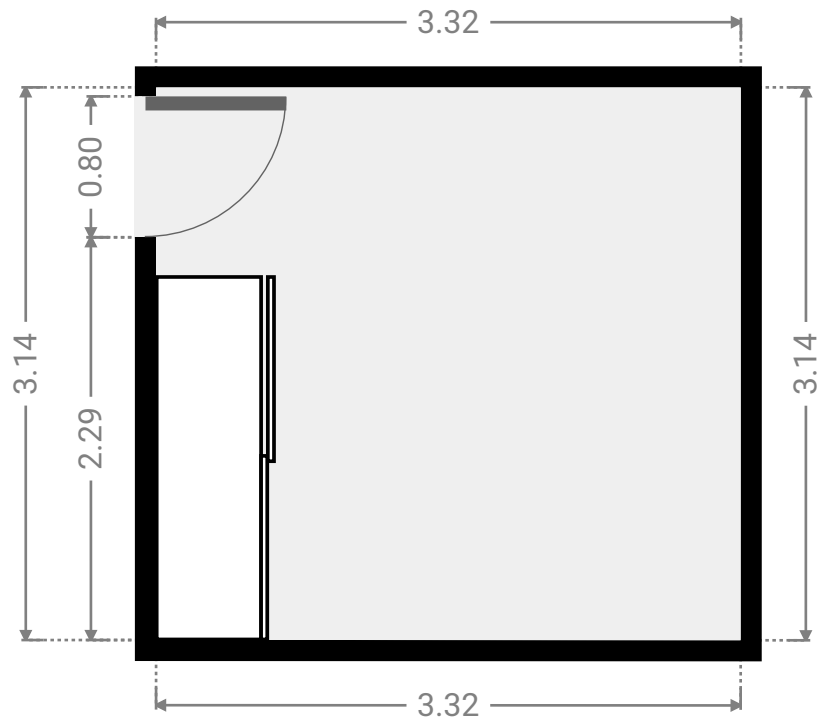
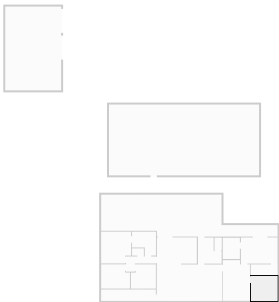
▼ **Closet**
Ground Floor

WIDTH: 3.35 m • LENGTH: 1.34 m
AREA: 4.49 m² • PERIMETER: 9.38 m



▼ **Bedroom**
Ground Floor

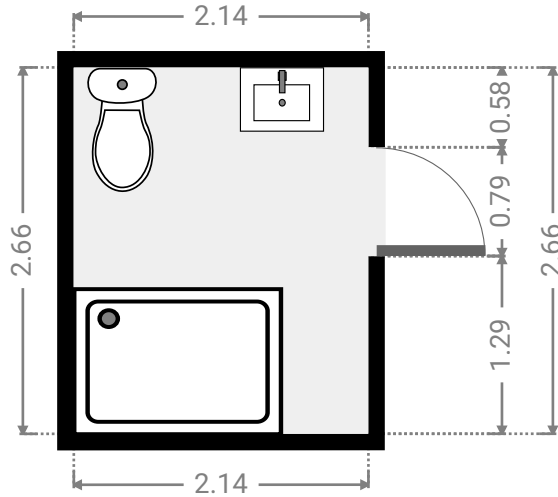
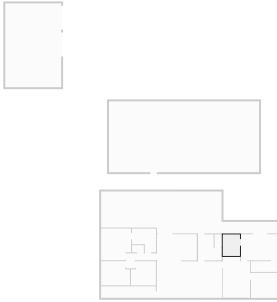
WIDTH: 3.32 m • LENGTH: 3.14 m
AREA: 10.42 m² • PERIMETER: 12.92 m



FLOORS: 1

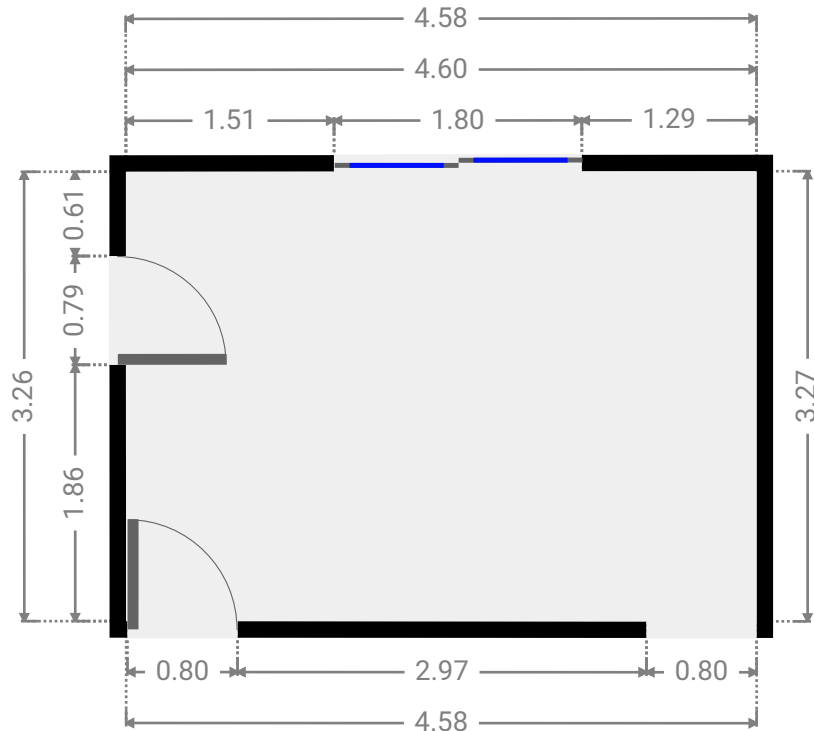
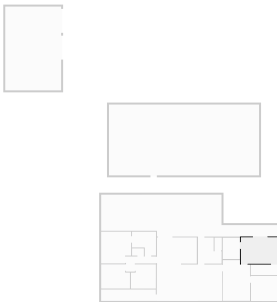
▼ Bathroom
Ground Floor

WIDTH: 2.14 m • LENGTH: 2.66 m
AREA: 5.69 m² • PERIMETER: 9.60 m



▼ Primary Bedroom
Ground Floor

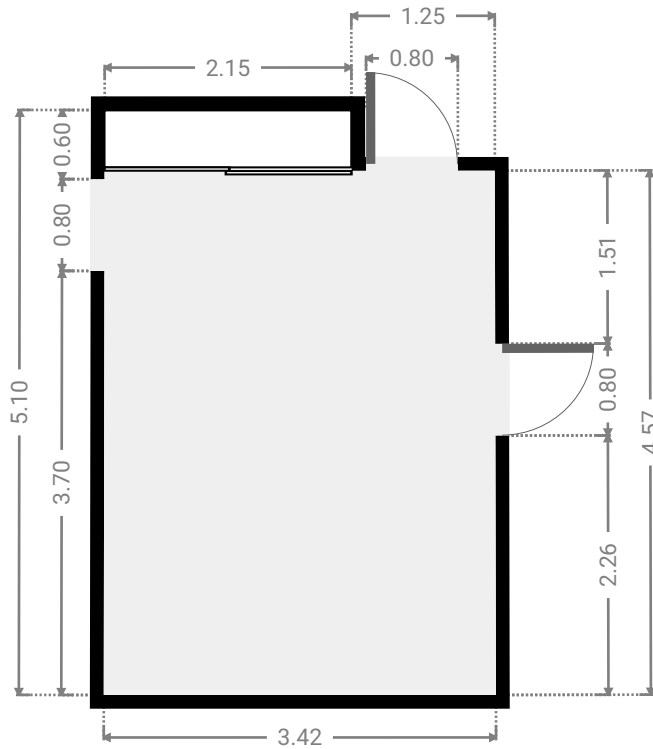
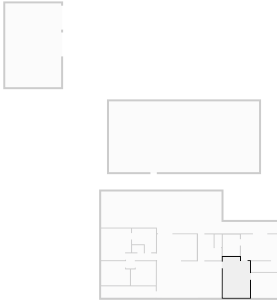
WIDTH: 4.58 m • LENGTH: 3.27 m
AREA: 14.96 m² • PERIMETER: 15.70 m



FLOORS: 1

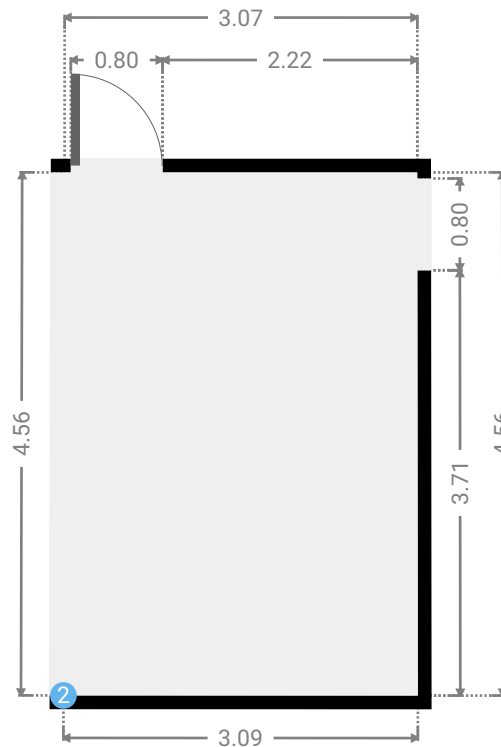
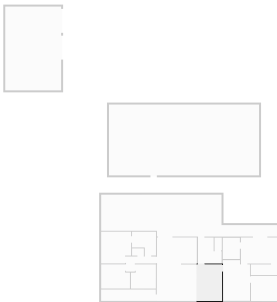
▼ Living Room
Ground Floor

WIDTH: 3.42 m • LENGTH: 5.10 m
AREA: 16.72 m² • PERIMETER: 17.02 m



▼ Living Room
Ground Floor

WIDTH: 3.09 m • LENGTH: 4.56 m
AREA: 14.05 m² • PERIMETER: 15.28 m



▼ Living Room/Ground Floor

2 OPENING

Height
0.00 m

