

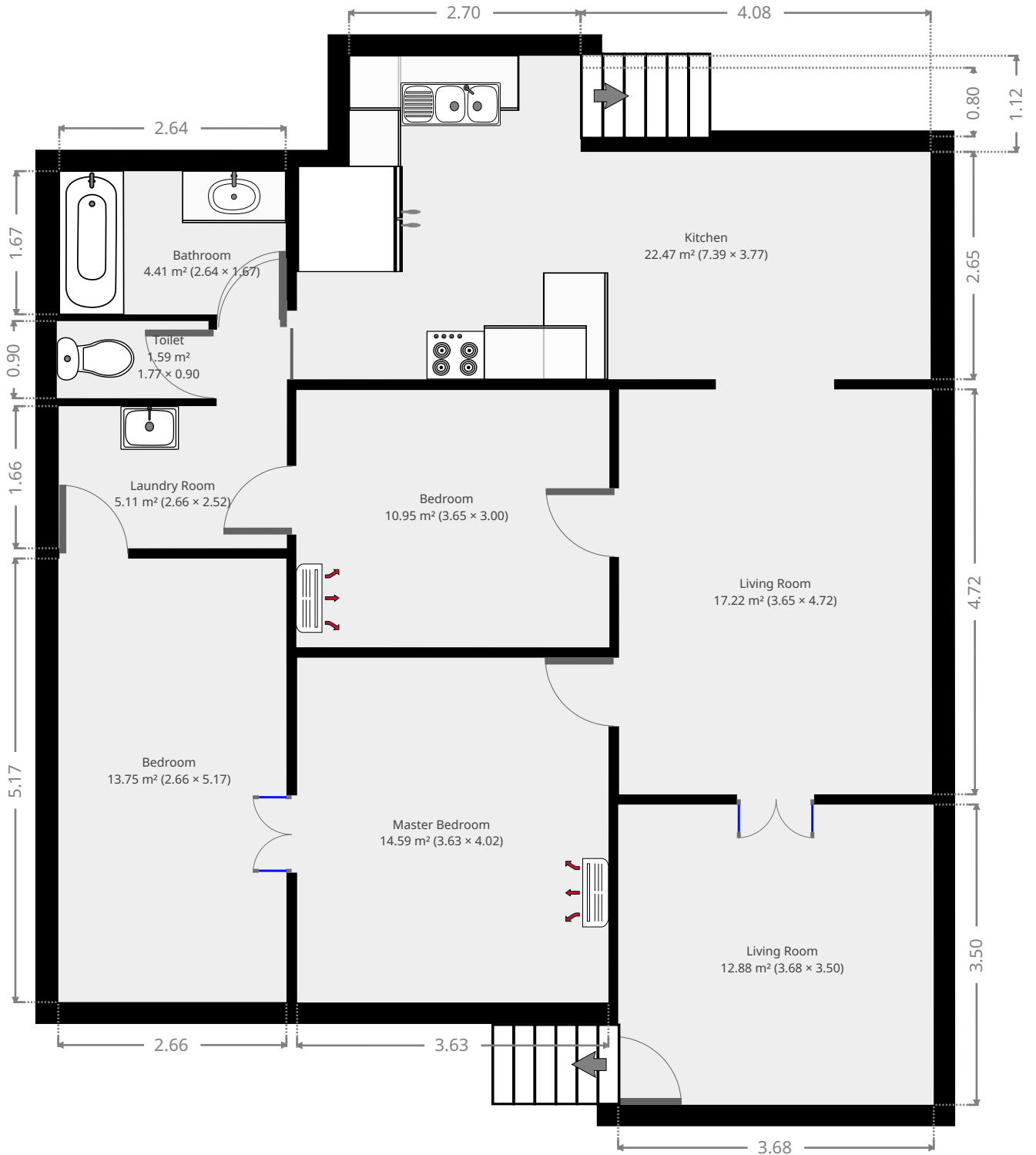
164 High Street

Created on
2020-06-18

Floors

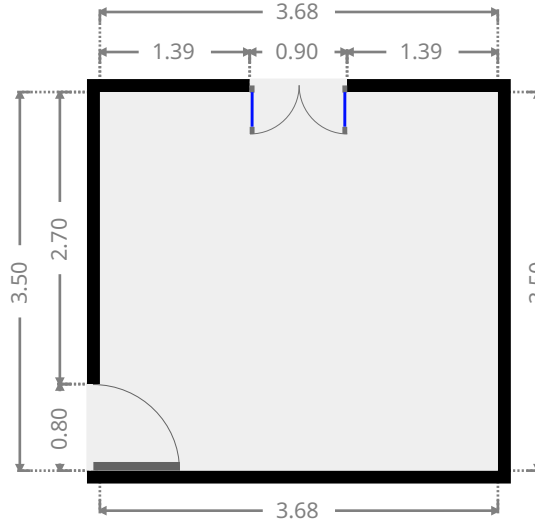
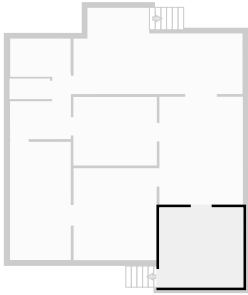
1

▼ Ground Floor



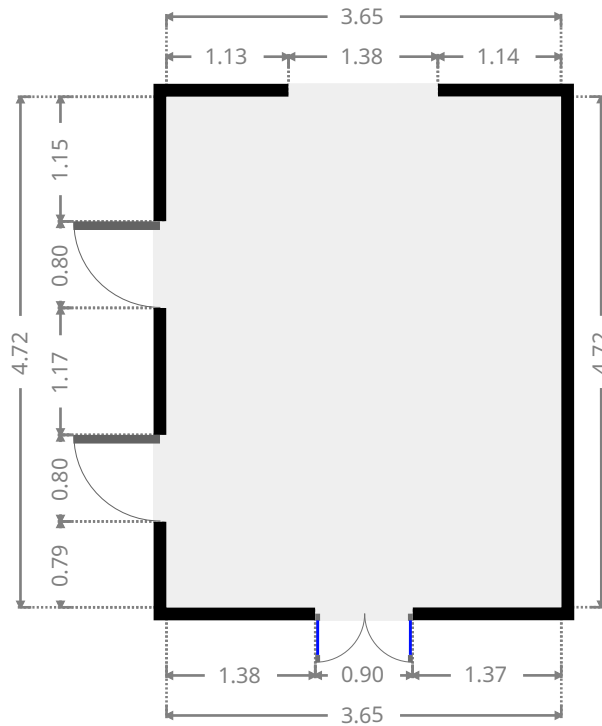
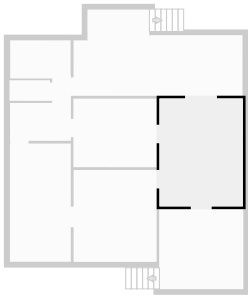
▼ Living Room
Ground Floor

WIDTH: 3.68 m • LENGTH: 3.50 m
AREA: 12.88 m² • PERIMETER: 14.36 m



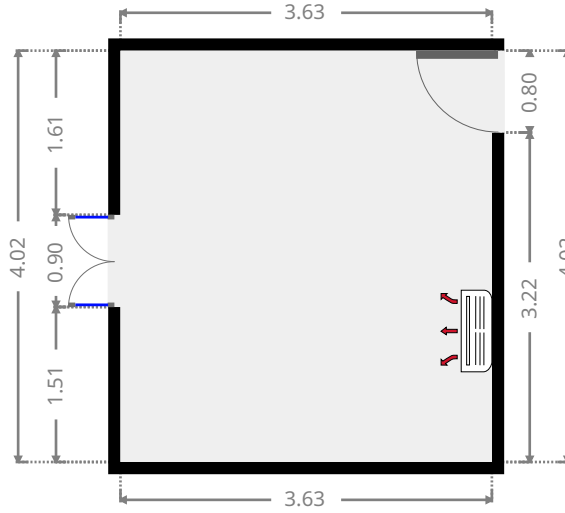
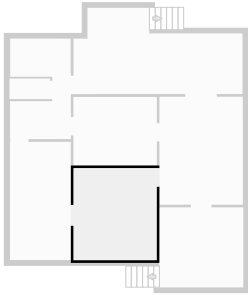
▼ Living Room
Ground Floor

WIDTH: 3.65 m • LENGTH: 4.72 m
AREA: 17.22 m² • PERIMETER: 16.74 m



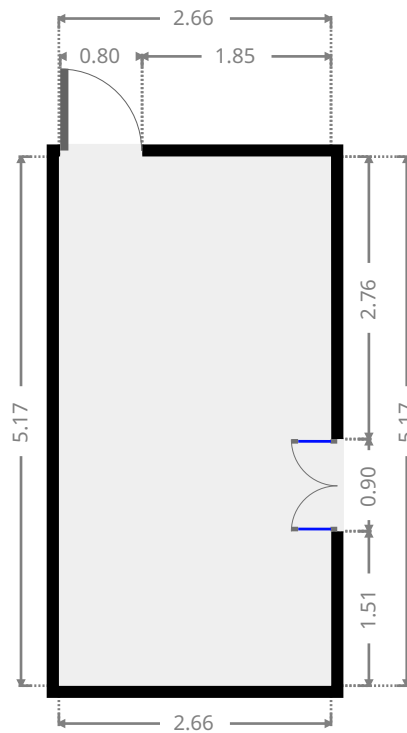
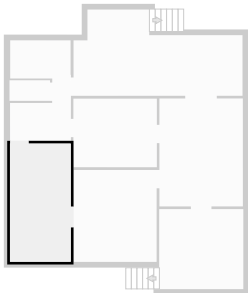
▼ **Master Bedroom**
Ground Floor

WIDTH: 3.63 m • **LENGTH:** 4.02 m
AREA: 14.59 m² • **PERIMETER:** 15.30 m



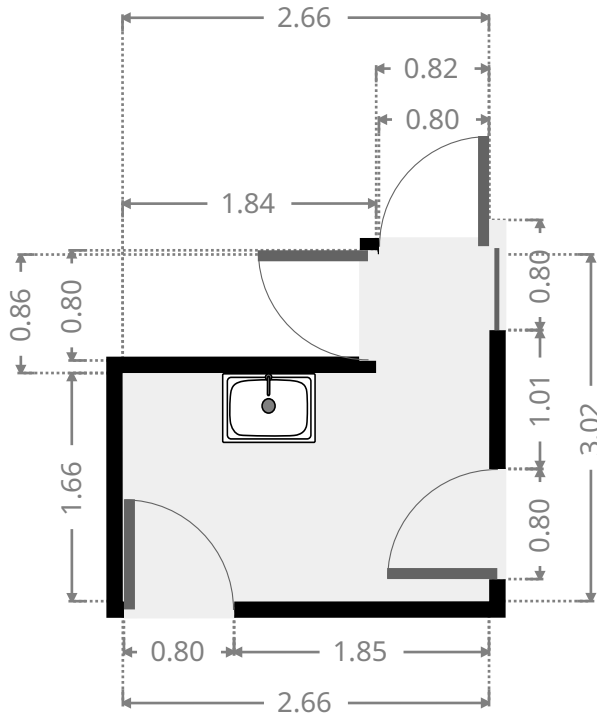
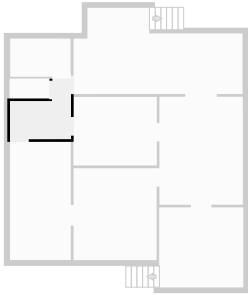
▼ **Bedroom**
Ground Floor

WIDTH: 2.66 m • **LENGTH:** 5.17 m
AREA: 13.75 m² • **PERIMETER:** 15.66 m



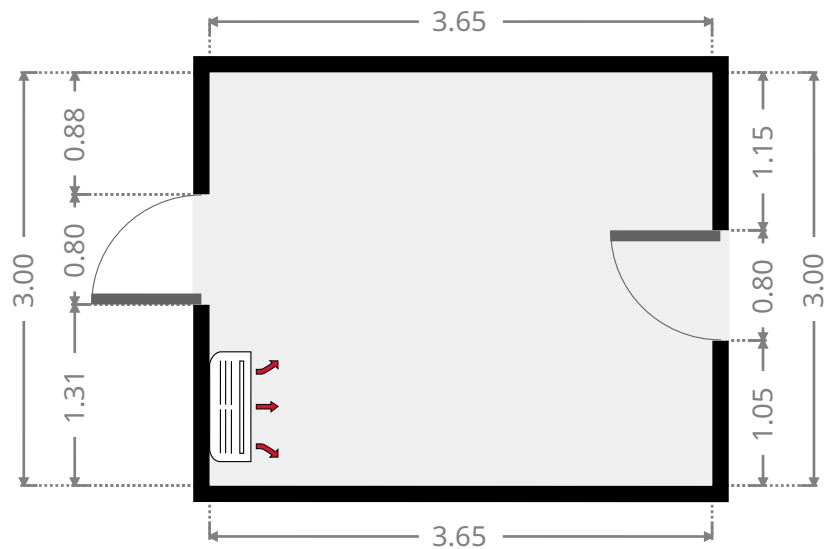
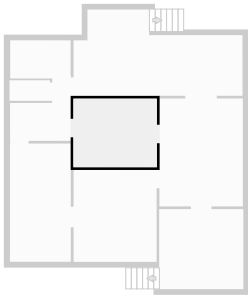
▼ **Laundry Room**
Ground Floor

WIDTH: 2.66 m • LENGTH: 2.52 m
AREA: 5.11 m² • PERIMETER: 10.36 m



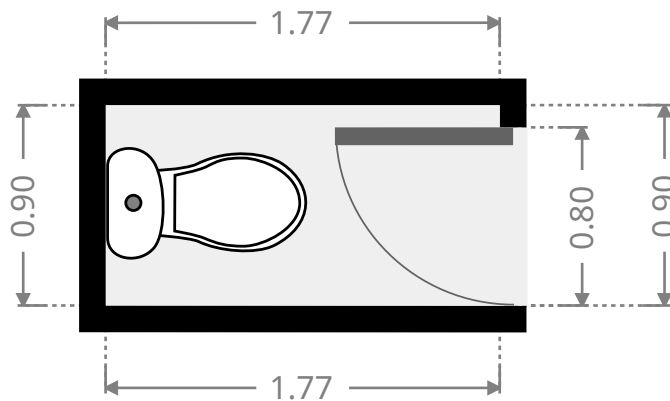
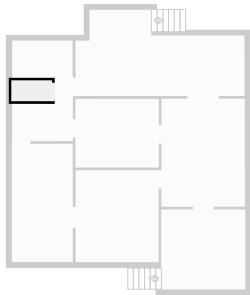
▼ **Bedroom**
Ground Floor

WIDTH: 3.65 m • LENGTH: 3.00 m
AREA: 10.95 m² • PERIMETER: 13.30 m



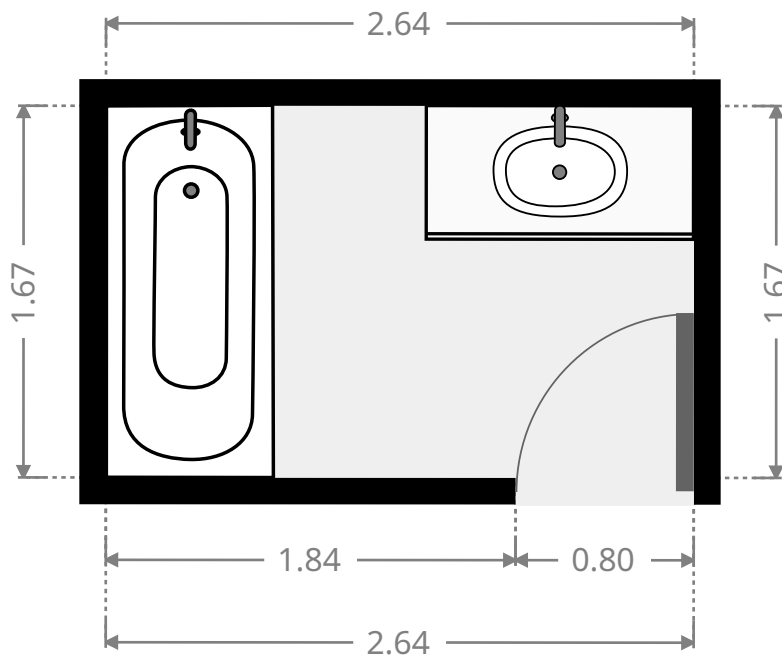
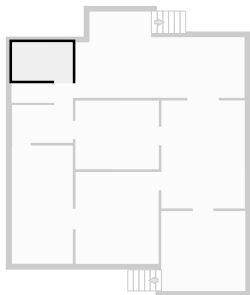
▼ **Toilet**
Ground Floor

WIDTH: 1.77 m • LENGTH: 0.90 m
AREA: 1.59 m² • PERIMETER: 5.34 m



▼ **Bathroom**
Ground Floor

WIDTH: 2.64 m • LENGTH: 1.67 m
AREA: 4.41 m² • PERIMETER: 8.62 m



▼ Kitchen Ground Floor

WIDTH: 7.39 m • LENGTH: 3.77 m
AREA: 22.47 m² • PERIMETER: 22.32 m

