

# 163 Kerrigan Street

Created on  
2021-07-05

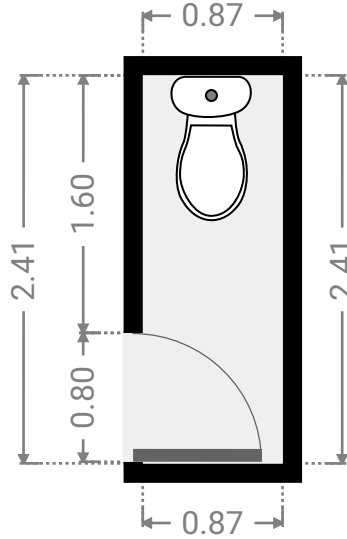
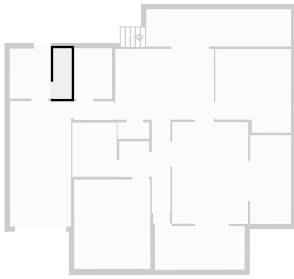
Floors  
1

▼ Ground Floor



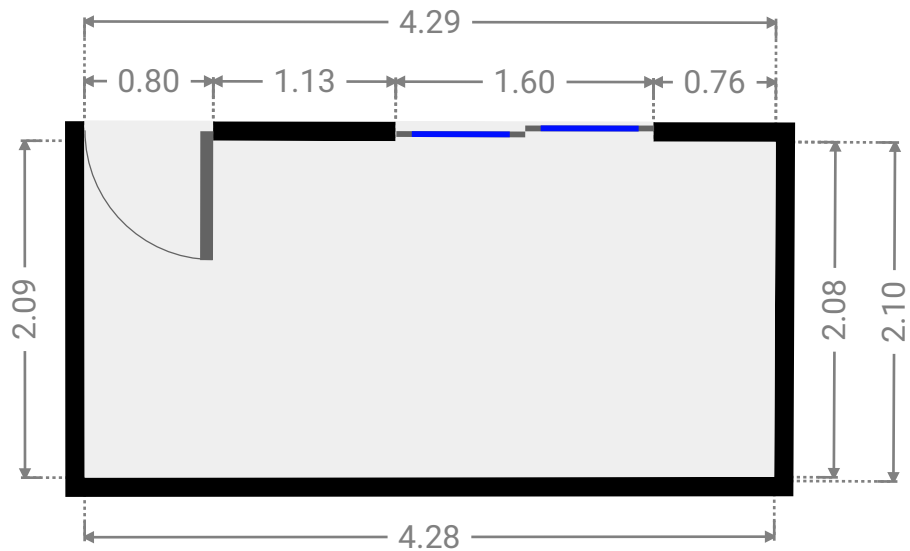
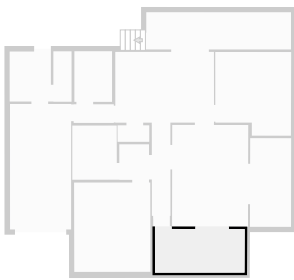
▼ Toilet  
Ground Floor

WIDTH: 0.87 m • LENGTH: 2.41 m  
AREA: 2.09 m<sup>2</sup> • PERIMETER: 6.55 m



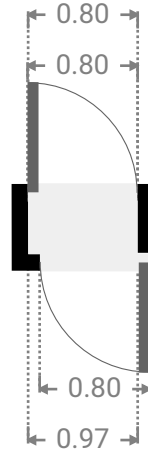
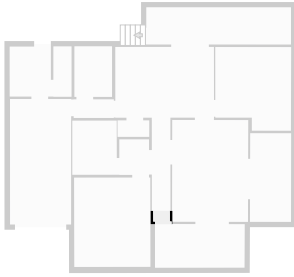
▼ Other  
Ground Floor

WIDTH: 4.29 m • LENGTH: 2.10 m  
AREA: 8.94 m<sup>2</sup> • PERIMETER: 12.74 m



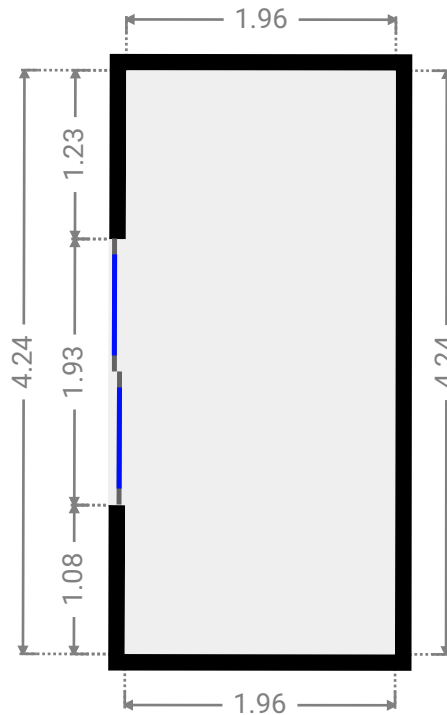
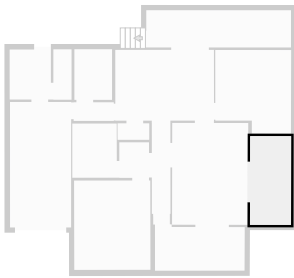
▼ Other  
Ground Floor

WIDTH: 0.80 m • LENGTH: 0.39 m  
AREA: 0.31 m<sup>2</sup> • PERIMETER: 2.37 m



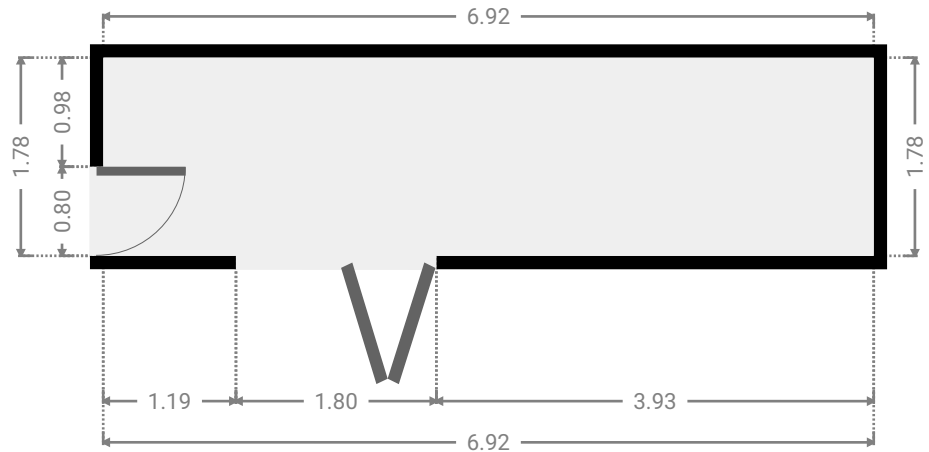
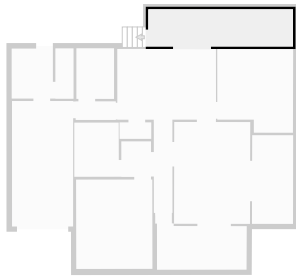
▼ Other  
Ground Floor

WIDTH: 1.96 m • LENGTH: 4.24 m  
AREA: 8.31 m<sup>2</sup> • PERIMETER: 12.40 m



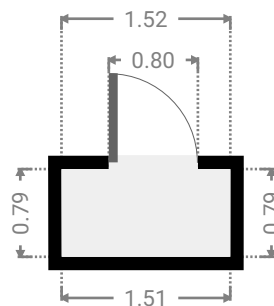
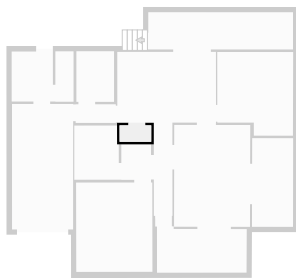
▼ Other  
Ground Floor

WIDTH: 6.92 m • LENGTH: 1.78 m  
AREA: 12.32 m<sup>2</sup> • PERIMETER: 17.40 m



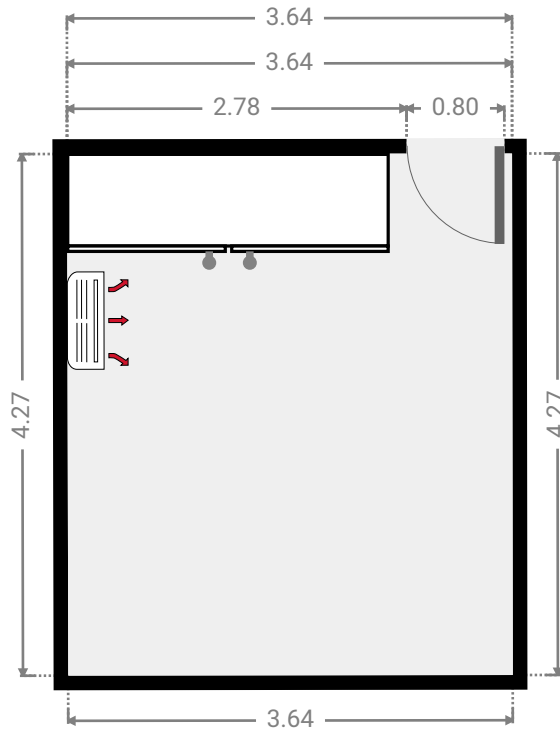
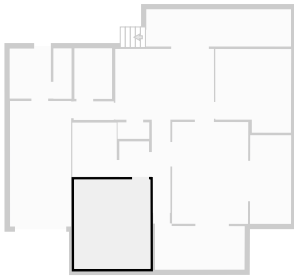
▼ Closet  
Ground Floor

WIDTH: 1.52 m • LENGTH: 0.79 m  
AREA: 1.19 m<sup>2</sup> • PERIMETER: 4.61 m



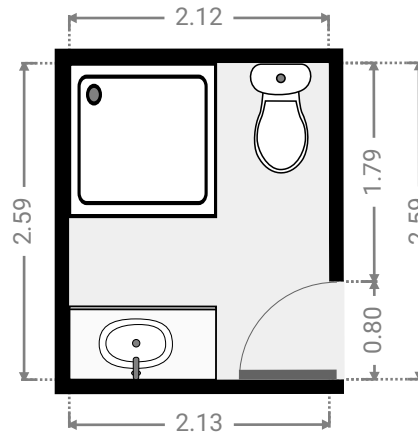
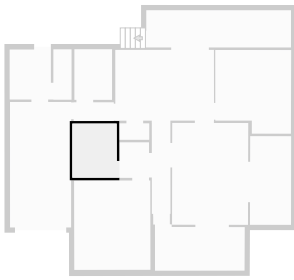
▼ **Master Bedroom**  
Ground Floor

WIDTH: 3.64 m • LENGTH: 4.27 m  
AREA: 15.55 m<sup>2</sup> • PERIMETER: 15.83 m



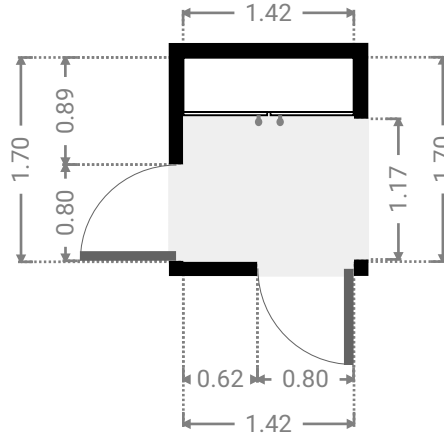
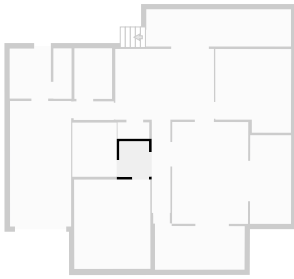
▼ **Bathroom**  
Ground Floor

WIDTH: 2.13 m • LENGTH: 2.59 m  
AREA: 5.51 m<sup>2</sup> • PERIMETER: 9.43 m



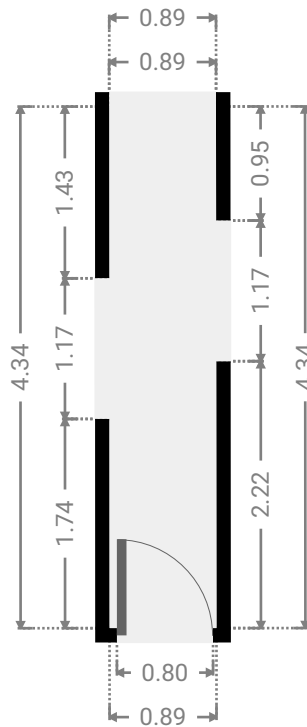
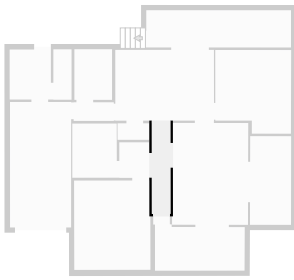
▼ Hall  
Ground Floor

WIDTH: 1.42 m • LENGTH: 1.70 m  
AREA: 2.41 m<sup>2</sup> • PERIMETER: 6.24 m



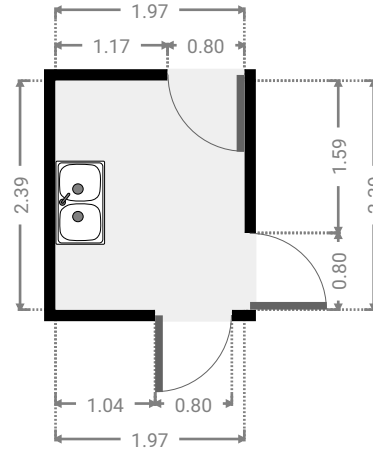
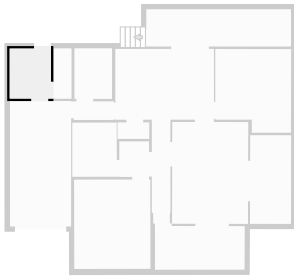
▼ Hall  
Ground Floor

WIDTH: 0.89 m • LENGTH: 4.34 m  
AREA: 3.86 m<sup>2</sup> • PERIMETER: 10.46 m



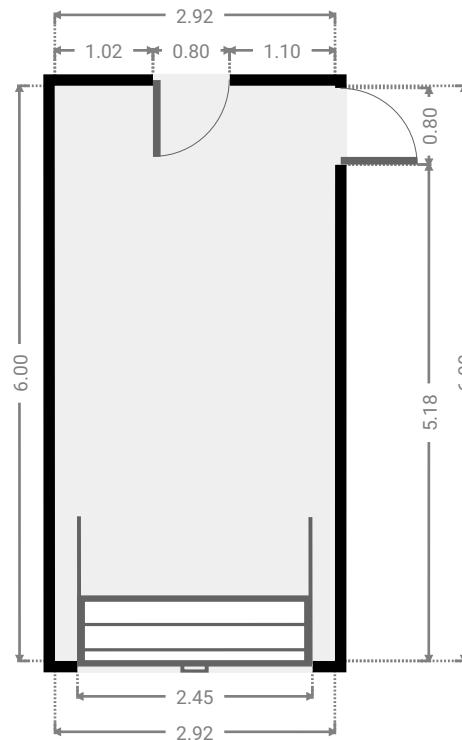
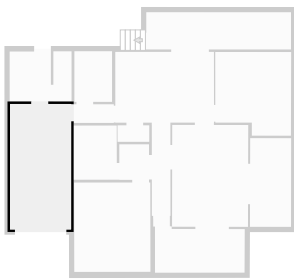
▼ **Laundry Room**  
Ground Floor

WIDTH: 1.97 m • LENGTH: 2.39 m  
AREA: 4.71 m<sup>2</sup> • PERIMETER: 8.72 m



▼ **Garage**  
Ground Floor

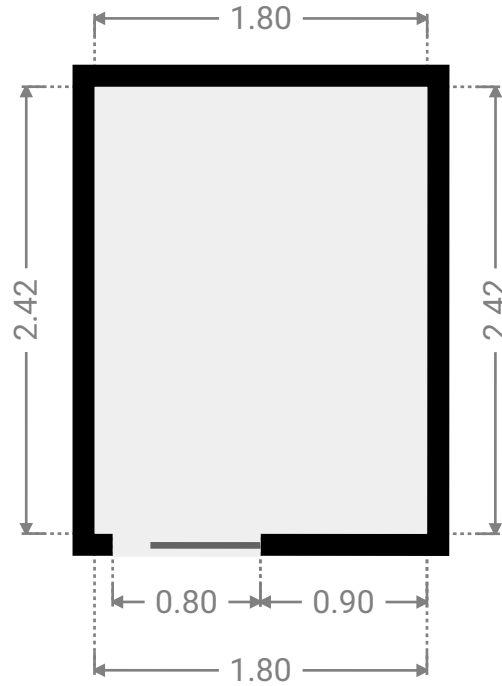
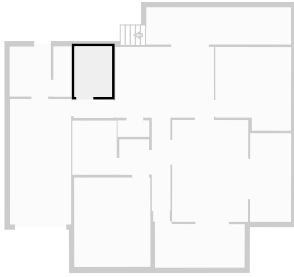
WIDTH: 2.92 m • LENGTH: 6.00 m  
AREA: 17.53 m<sup>2</sup> • PERIMETER: 17.84 m





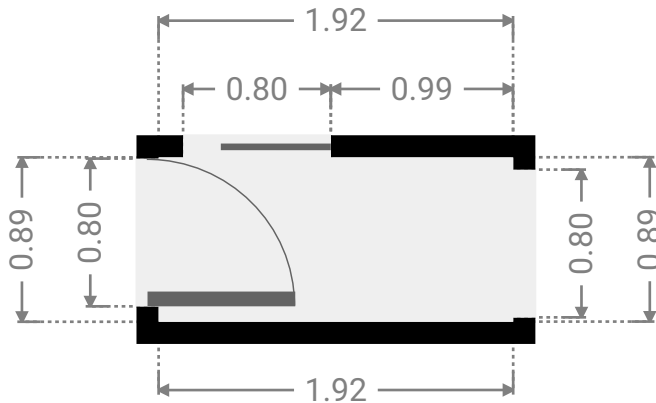
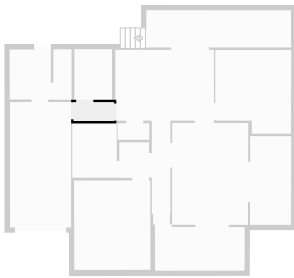
▼ **Study**  
Ground Floor

WIDTH: 1.80 m • LENGTH: 2.42 m  
AREA: 4.36 m<sup>2</sup> • PERIMETER: 8.44 m



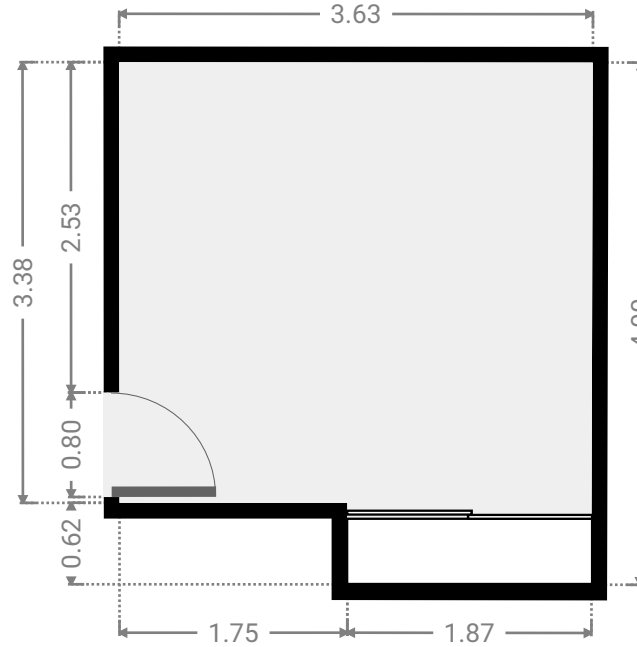
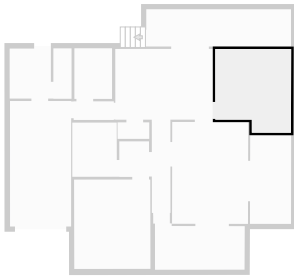
▼ **Hall**  
Ground Floor

WIDTH: 1.92 m • LENGTH: 0.89 m  
AREA: 1.71 m<sup>2</sup> • PERIMETER: 5.62 m



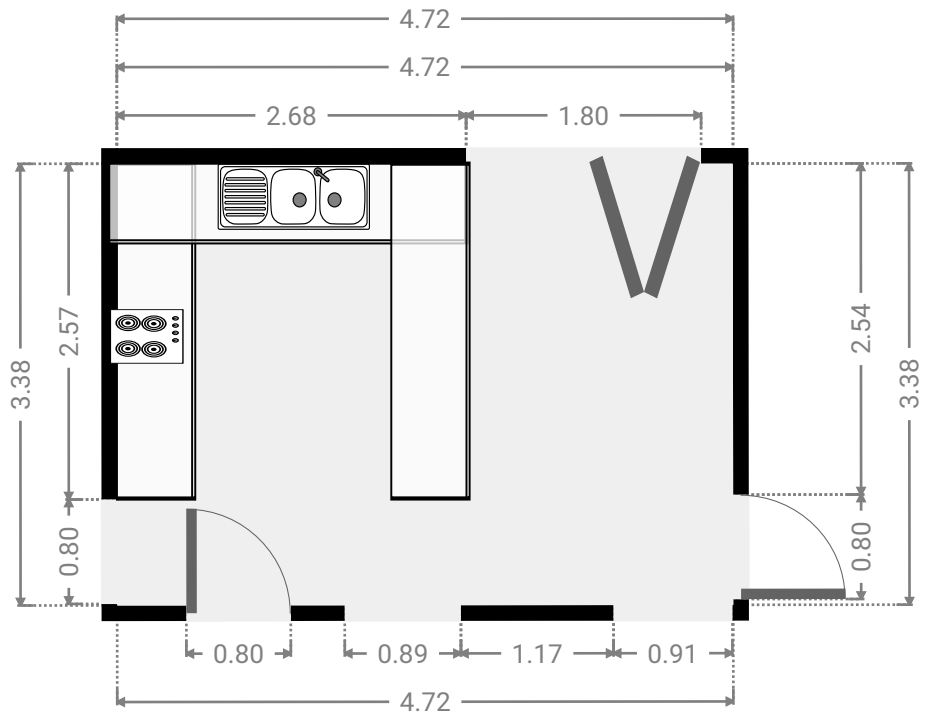
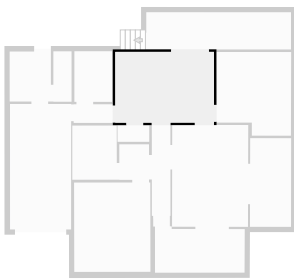
▼ **Bedroom**  
Ground Floor

WIDTH: 3.63 m • LENGTH: 4.00 m  
AREA: 13.40 m<sup>2</sup> • PERIMETER: 15.25 m



▼ **Kitchen**  
Ground Floor

WIDTH: 4.72 m • LENGTH: 3.38 m  
AREA: 15.96 m<sup>2</sup> • PERIMETER: 16.20 m



▼ Living Room  
Ground Floor

WIDTH: 3.64 m • LENGTH: 4.87 m  
AREA: 17.68 m<sup>2</sup> • PERIMETER: 17.00 m

