

163 Cruikshank STREET

SUBMITTED BY

Ray White Rockhampton Casey
stockers@cqoz.com

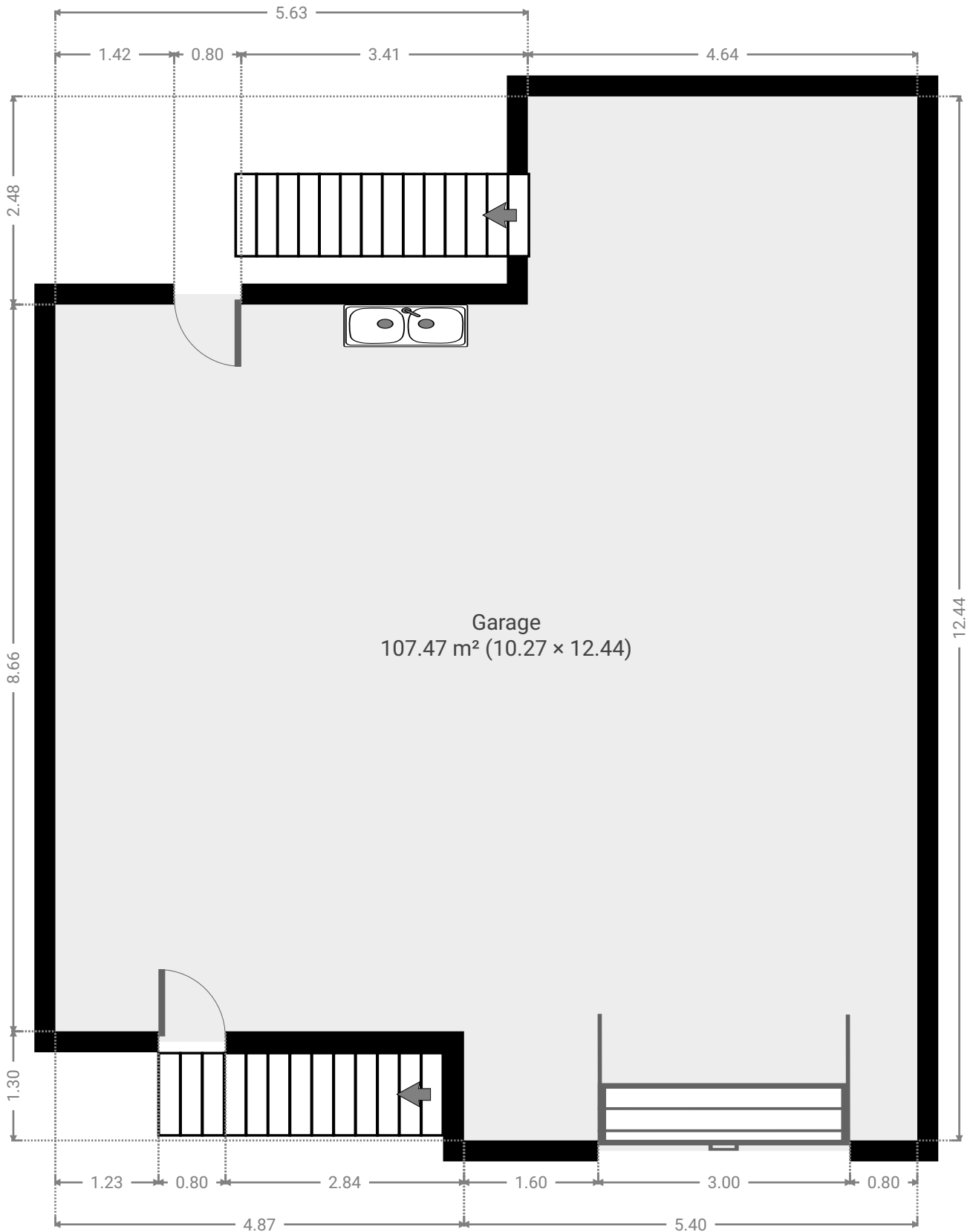
CREATED ON

2022-09-12

Floors

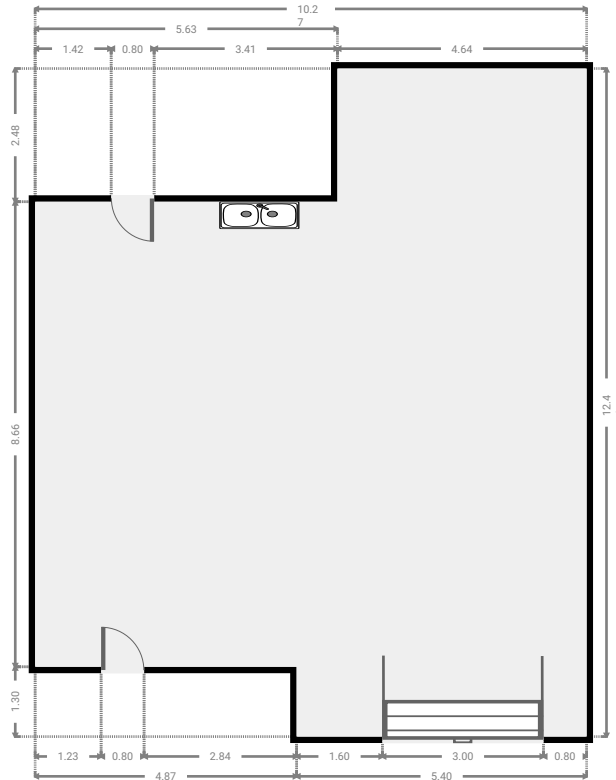
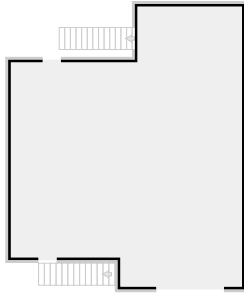
2

▼ Ground Floor

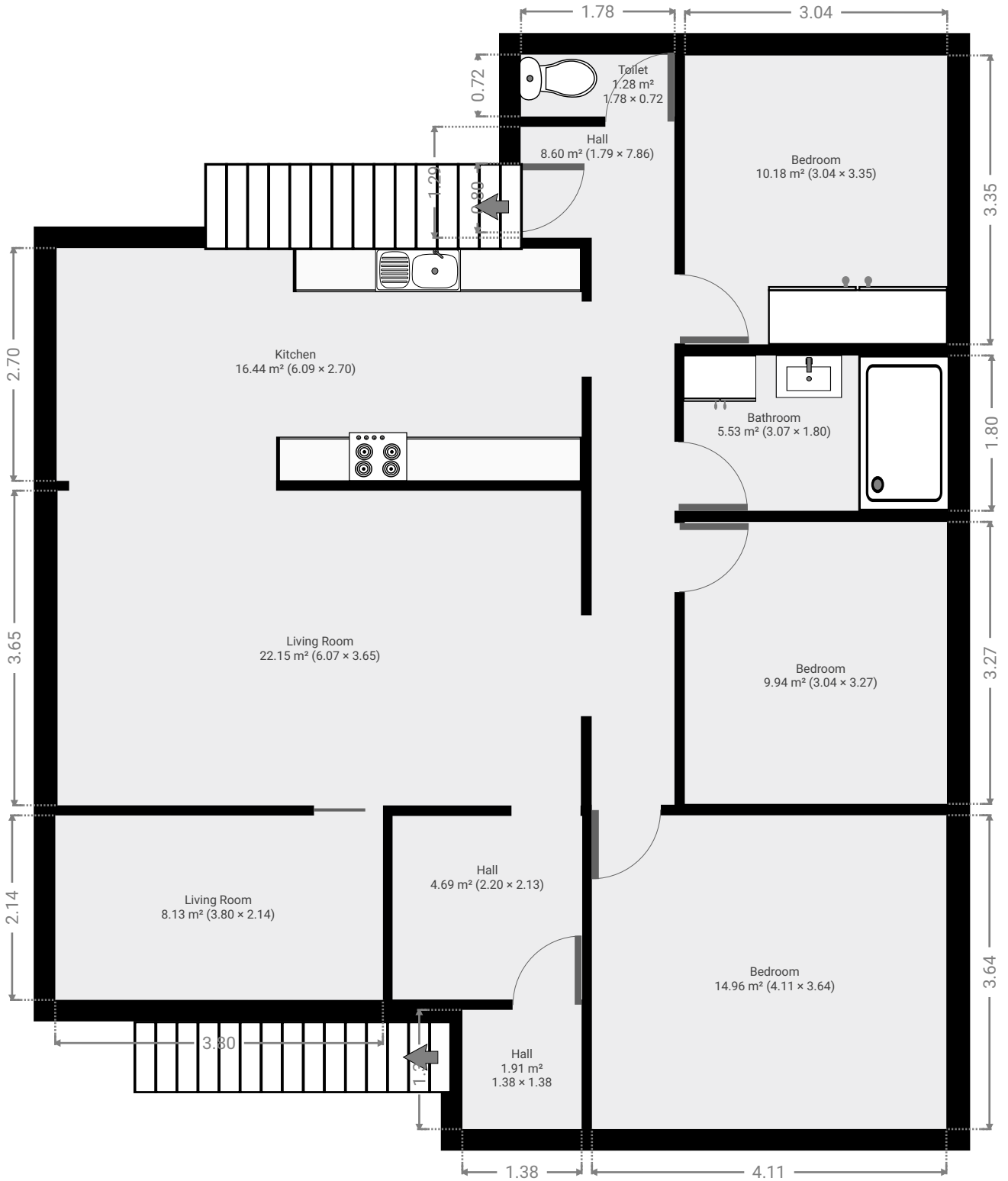


▼ **Garage**
Ground Floor

WIDTH: 10.27 m • LENGTH: 12.44 m
AREA: 107.47 m² • PERIMETER: 45.42 m

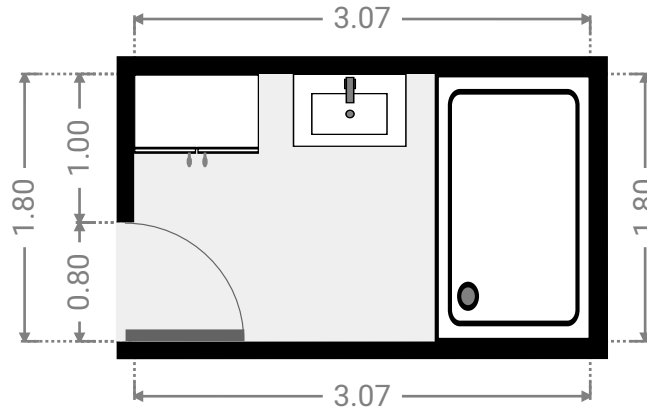
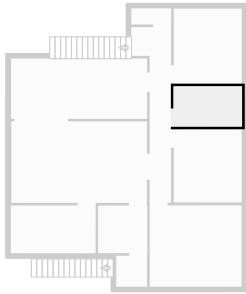


▼ 1st Floor



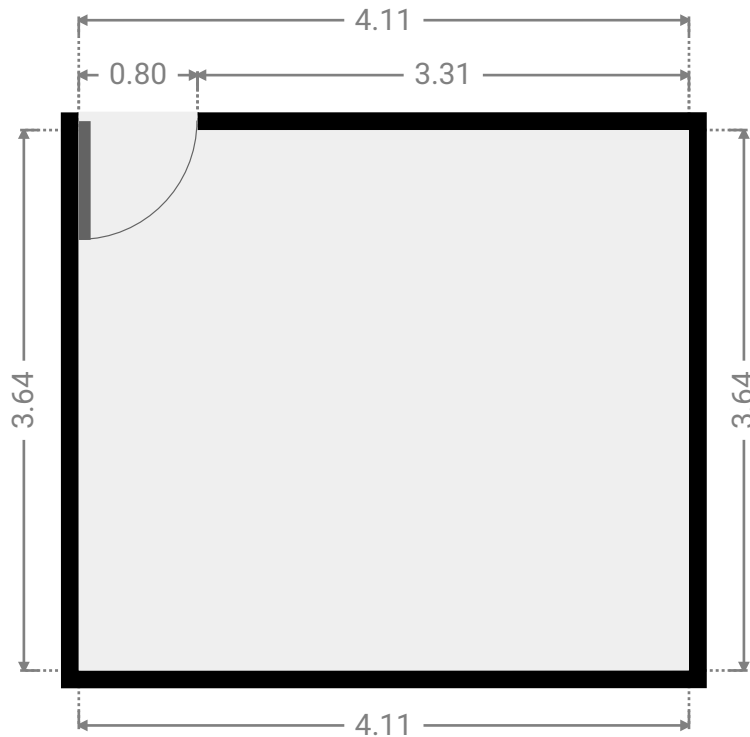
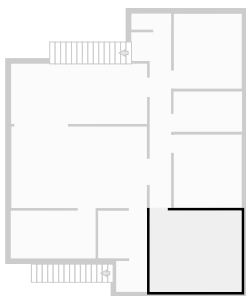
▼ **Bathroom**
1st Floor

WIDTH: 3.07 m • LENGTH: 1.80 m
AREA: 5.53 m² • PERIMETER: 9.74 m



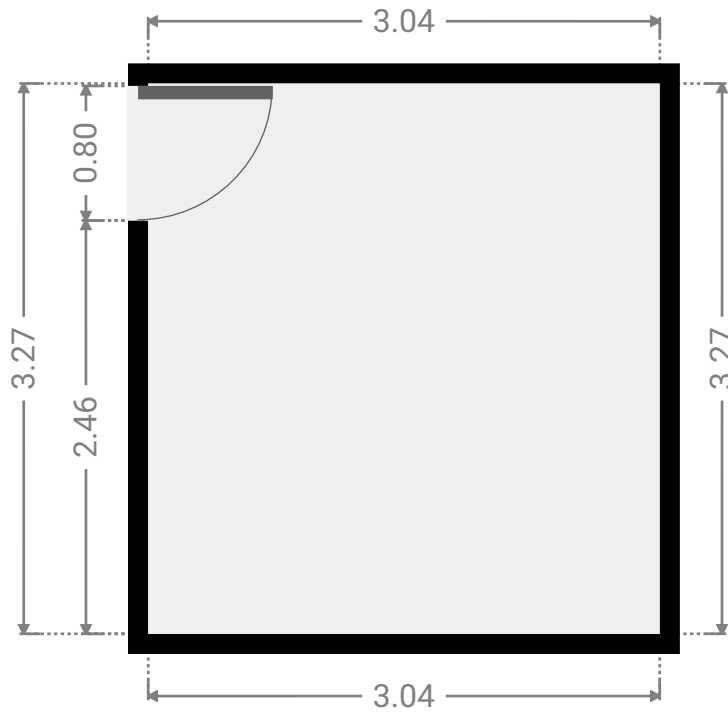
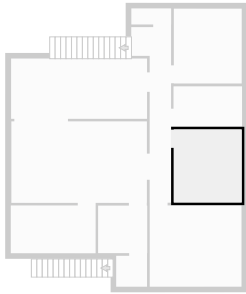
▼ **Bedroom**
1st Floor

WIDTH: 4.11 m • LENGTH: 3.64 m
AREA: 14.96 m² • PERIMETER: 15.50 m



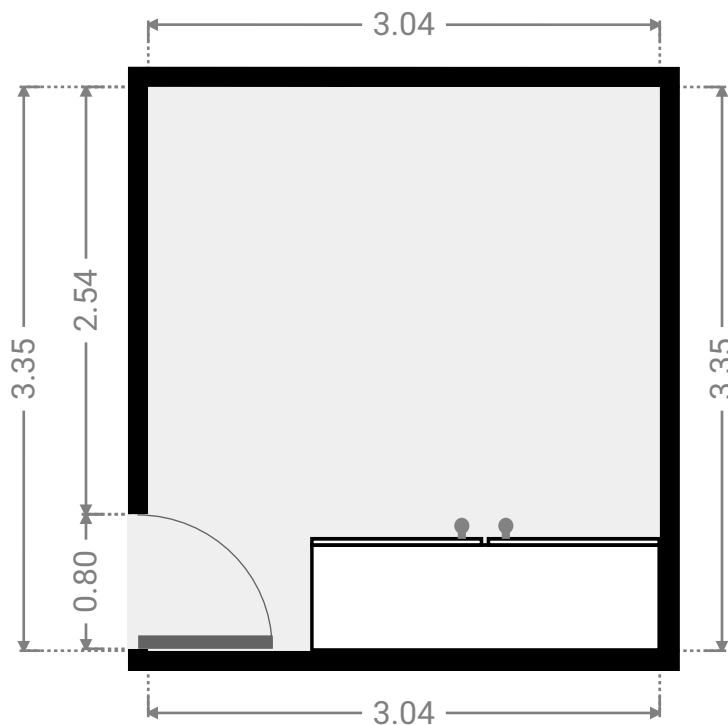
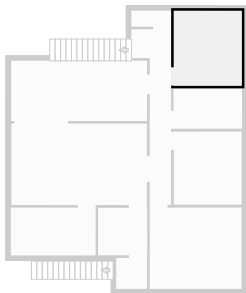
▼ **Bedroom**
1st Floor

WIDTH: 3.04 m • LENGTH: 3.27 m
AREA: 9.94 m² • PERIMETER: 12.62 m



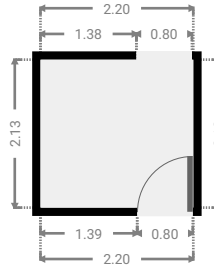
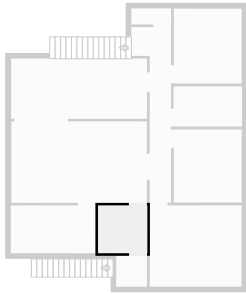
▼ **Bedroom**
1st Floor

WIDTH: 3.04 m • LENGTH: 3.35 m
AREA: 10.18 m² • PERIMETER: 12.78 m



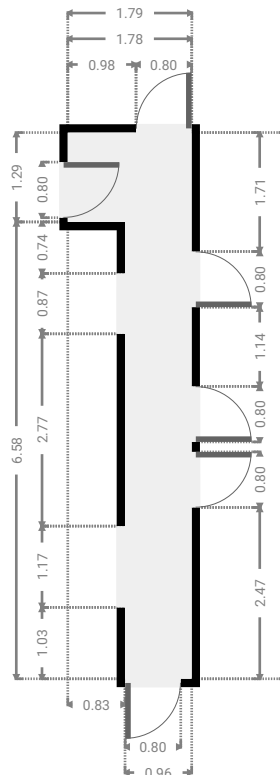
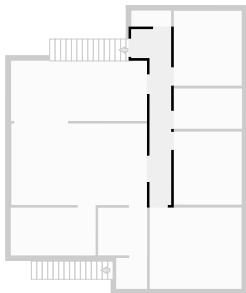
▼ Hall
1st Floor

WIDTH: 2.20 m • LENGTH: 2.13 m
AREA: 4.69 m² • PERIMETER: 8.66 m



▼ Hall
1st Floor

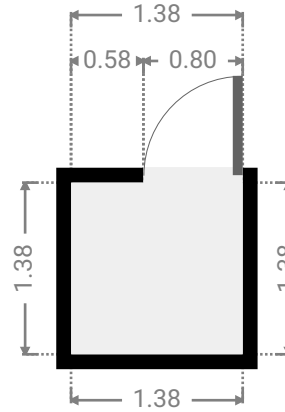
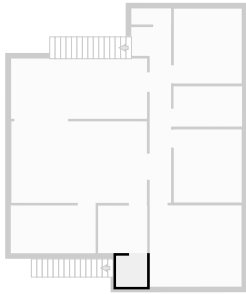
WIDTH: 1.79 m • LENGTH: 7.86 m
AREA: 8.60 m² • PERIMETER: 19.29 m



FLOORS: 2

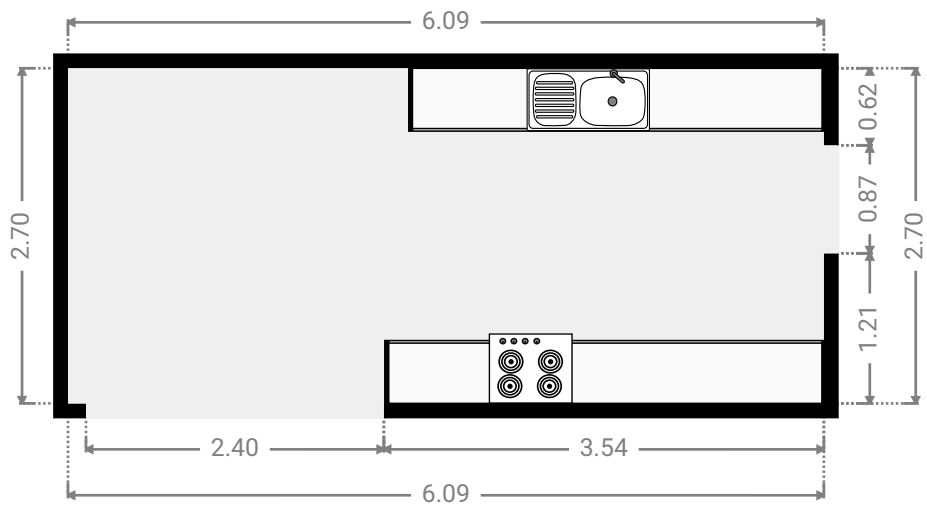
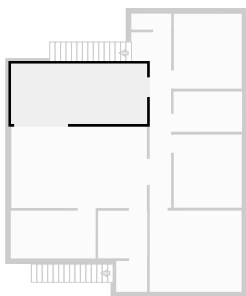
▼ Hall
1st Floor

WIDTH: 1.38 m • LENGTH: 1.38 m
AREA: 1.91 m² • PERIMETER: 5.53 m



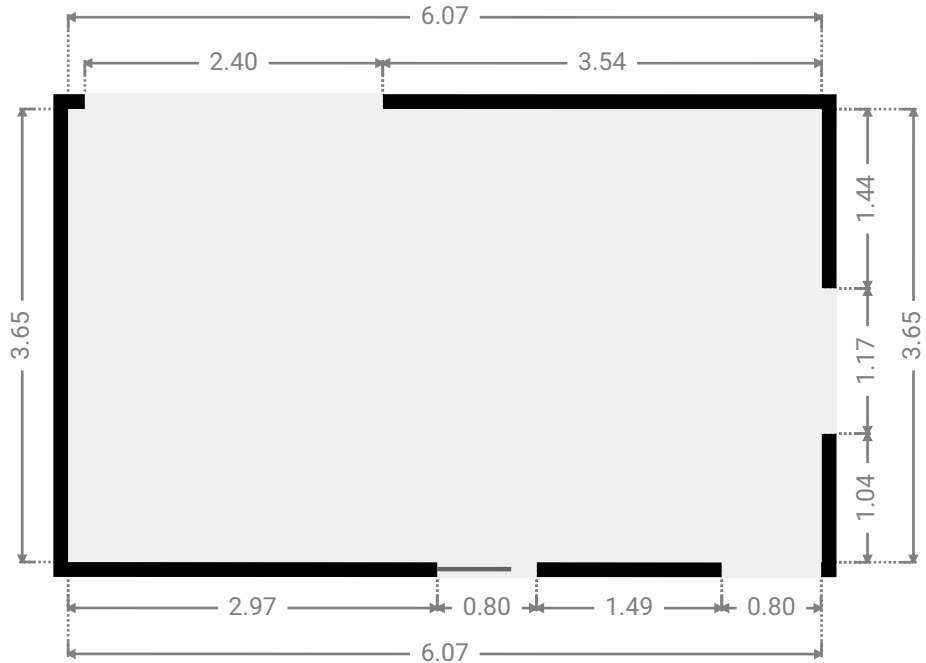
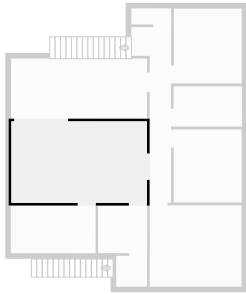
▼ Kitchen
1st Floor

WIDTH: 6.09 m • LENGTH: 2.70 m
AREA: 16.44 m² • PERIMETER: 17.58 m



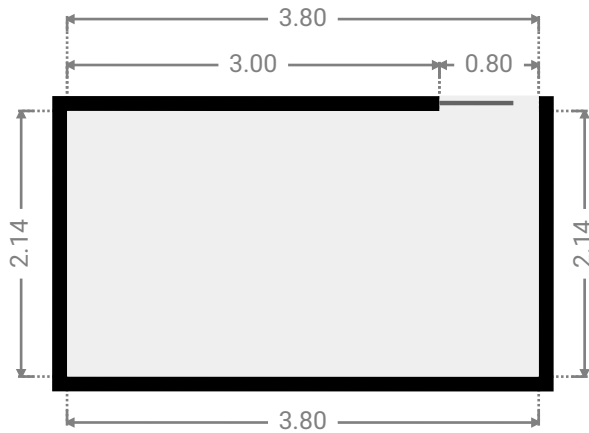
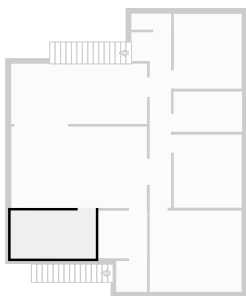
▼ **Living Room**
1st Floor

WIDTH: 6.07 m • LENGTH: 3.65 m
AREA: 22.15 m² • PERIMETER: 19.44 m



▼ **Living Room**
1st Floor

WIDTH: 3.80 m • LENGTH: 2.14 m
AREA: 8.13 m² • PERIMETER: 11.88 m



▼ Toilet
1st Floor

WIDTH: 1.78 m • LENGTH: 0.72 m
AREA: 1.28 m² • PERIMETER: 5.00 m

