

16 Weihmer Street

Created on
2021-06-07

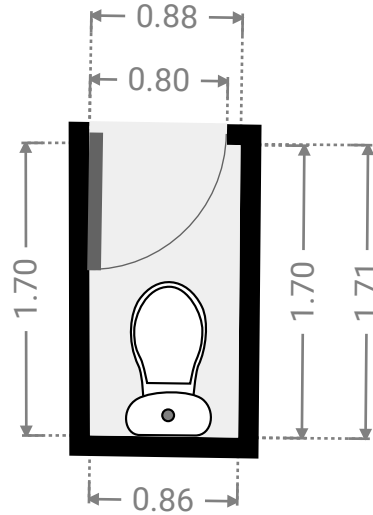
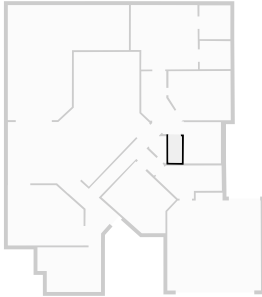
Floors
1

▼ Ground Floor



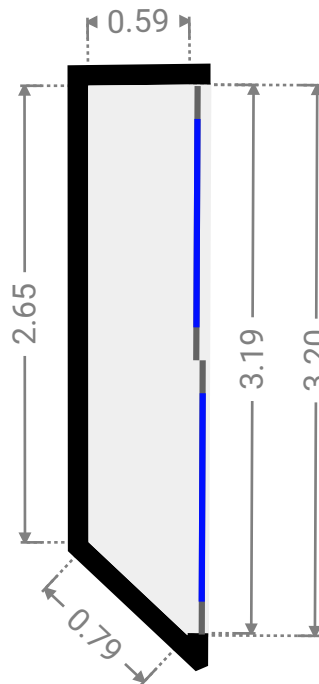
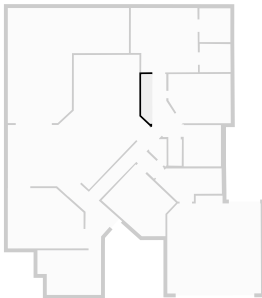
▼ Toilet
Ground Floor

WIDTH: 0.88 m • LENGTH: 1.71 m
AREA: 1.48 m² • PERIMETER: 5.14 m



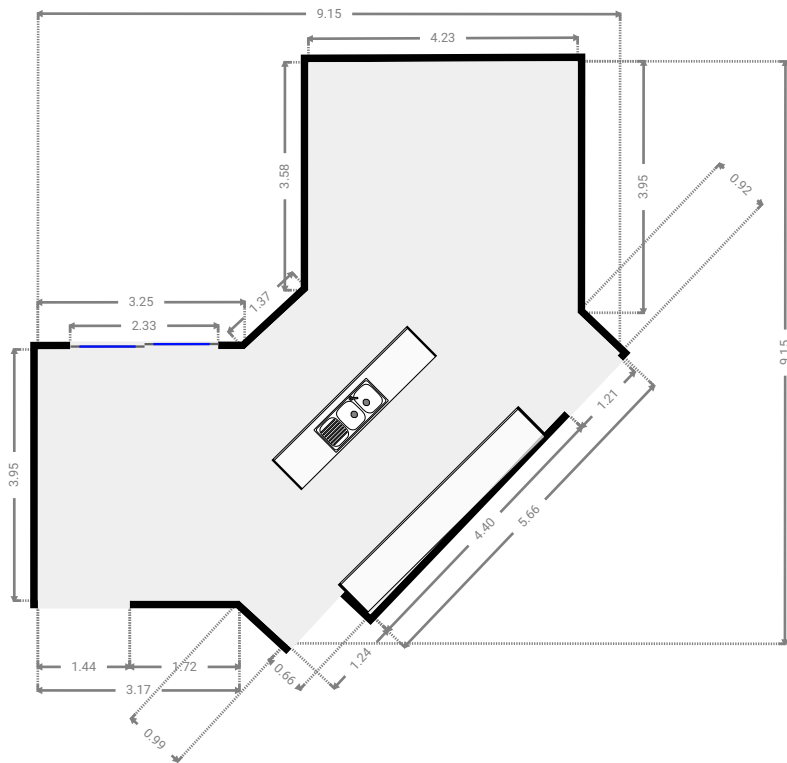
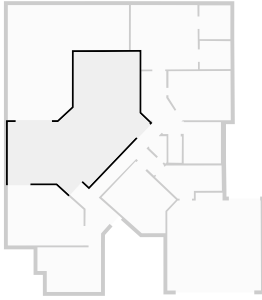
▼ Closet
Ground Floor

WIDTH: 0.59 m • LENGTH: 3.20 m
AREA: 1.71 m² • PERIMETER: 7.23 m



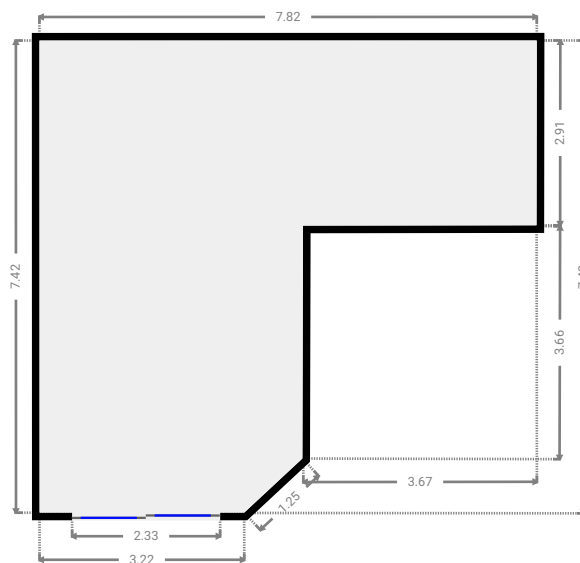
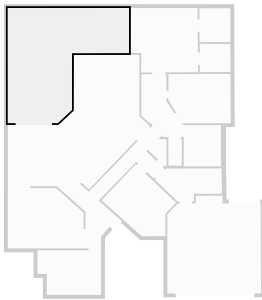
▼ Kitchen
Ground Floor

WIDTH: 9.15 m • LENGTH: 9.15 m
AREA: 49.10 m² • PERIMETER: 32.99 m



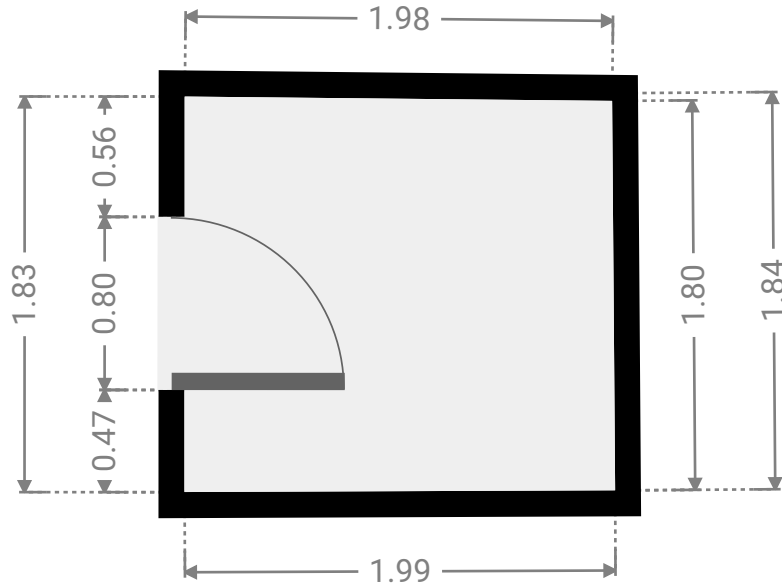
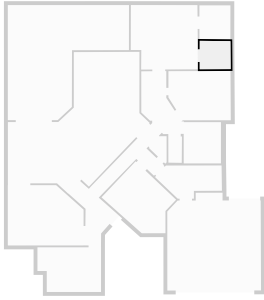
▼ Other
Ground Floor

WIDTH: 7.82 m • LENGTH: 7.43 m
AREA: 41.00 m² • PERIMETER: 29.94 m



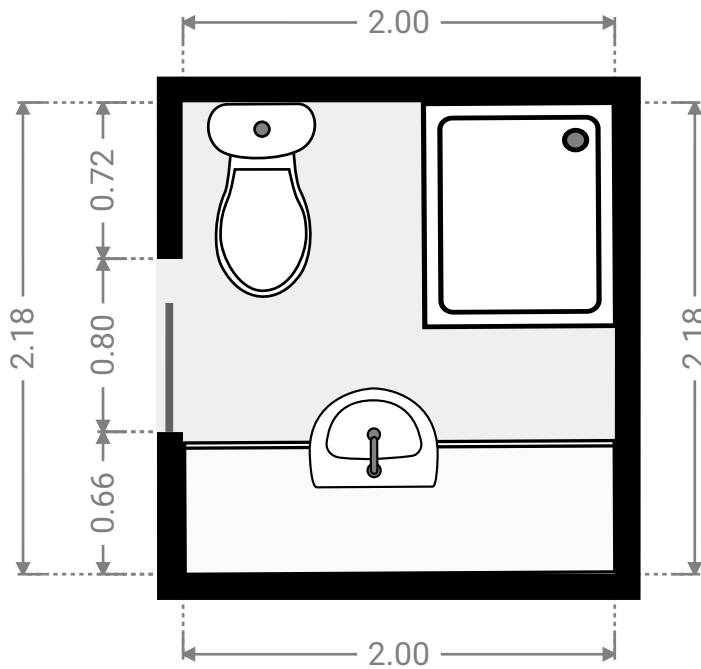
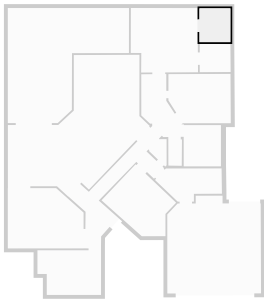
▼ **Closet**
Ground Floor

WIDTH: 1.99 m • LENGTH: 1.84 m
AREA: 3.60 m² • PERIMETER: 7.60 m



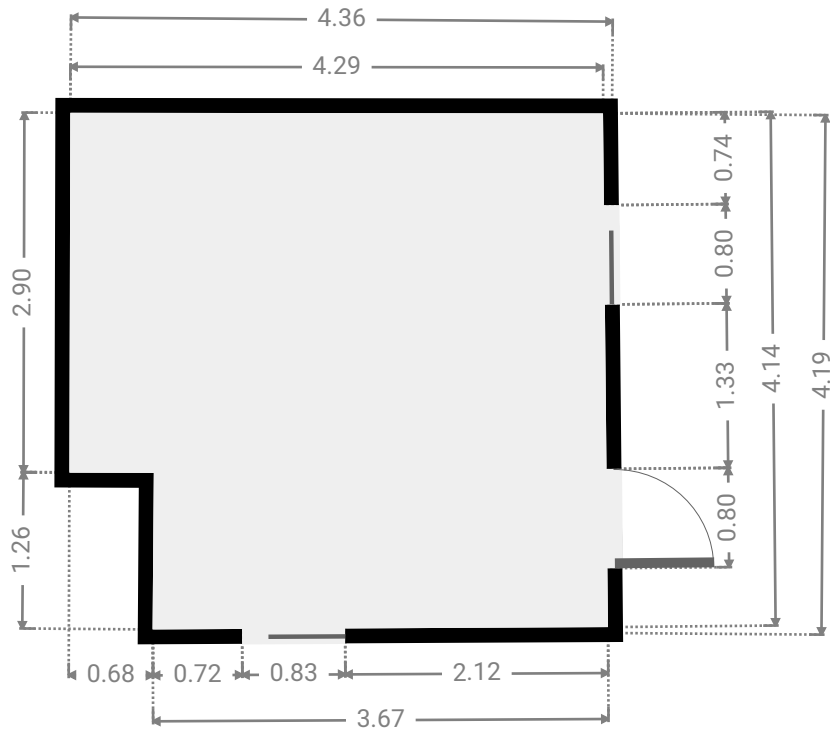
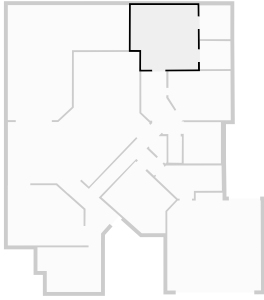
▼ **Bathroom**
Ground Floor

WIDTH: 2.00 m • LENGTH: 2.18 m
AREA: 4.35 m² • PERIMETER: 8.35 m



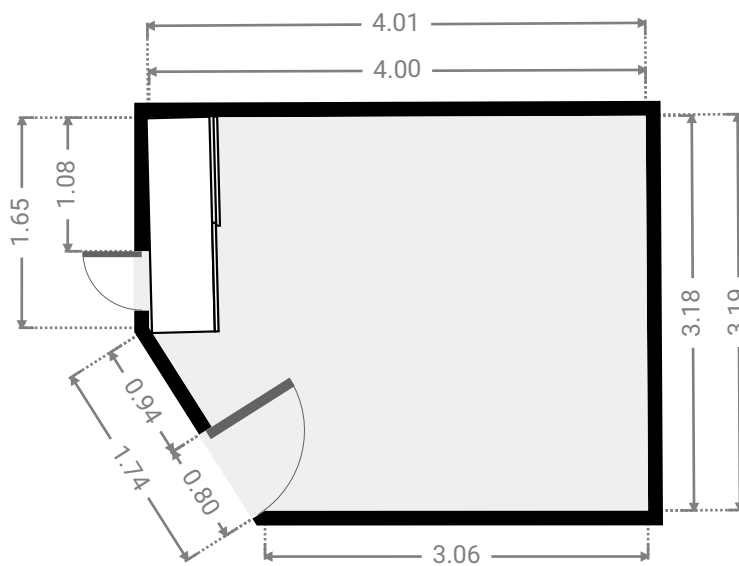
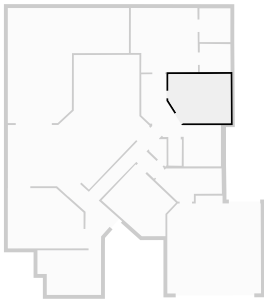
▼ **Master Bedroom**
Ground Floor

WIDTH: 4.36 m • LENGTH: 4.19 m
AREA: 17.07 m² • PERIMETER: 16.94 m



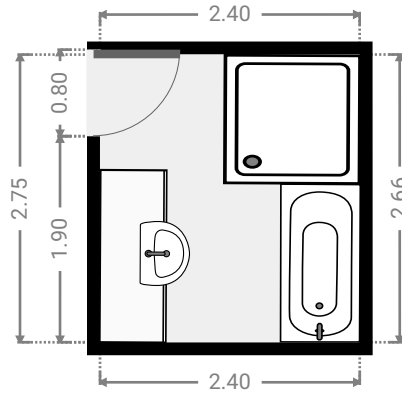
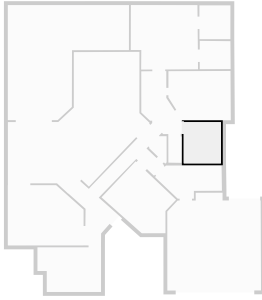
▼ **Bedroom**
Ground Floor

WIDTH: 4.01 m • LENGTH: 3.19 m
AREA: 12.04 m² • PERIMETER: 13.70 m



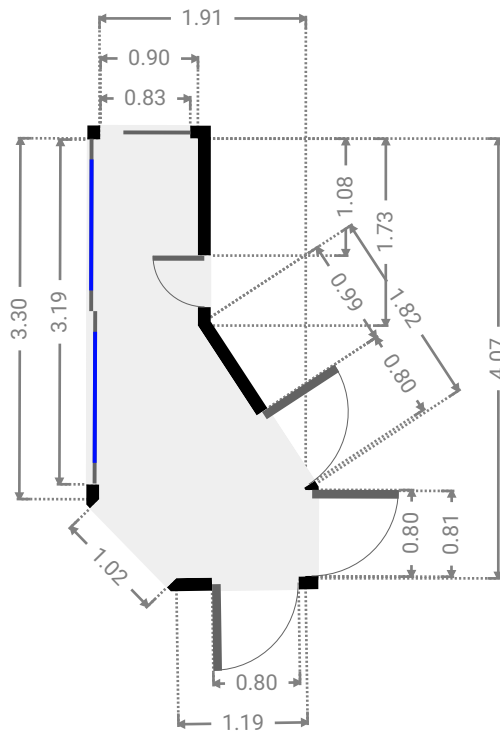
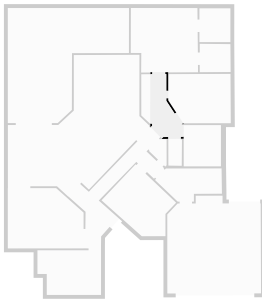
▼ Bathroom
Ground Floor

WIDTH: 2.40 m • LENGTH: 2.66 m
AREA: 6.38 m² • PERIMETER: 10.12 m



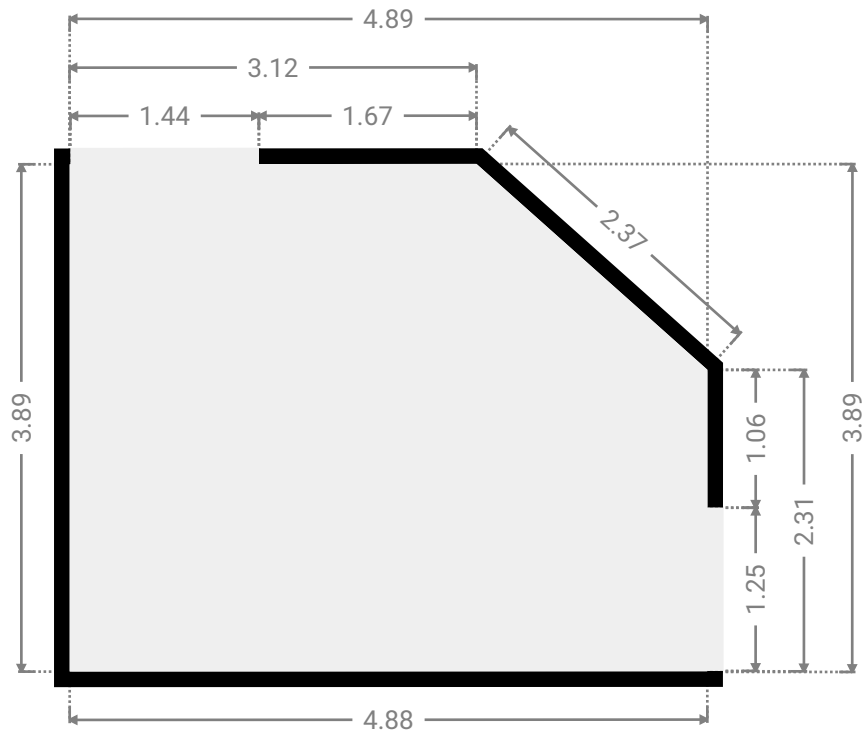
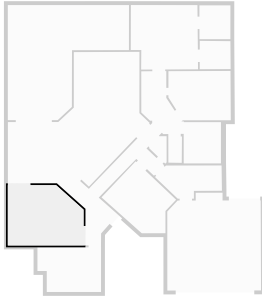
▼ Hall
Ground Floor

WIDTH: 1.91 m • LENGTH: 4.07 m
AREA: 4.98 m² • PERIMETER: 10.79 m



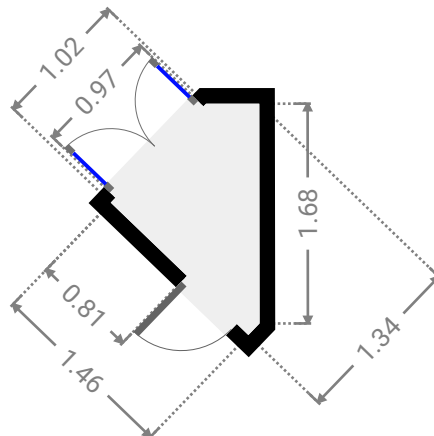
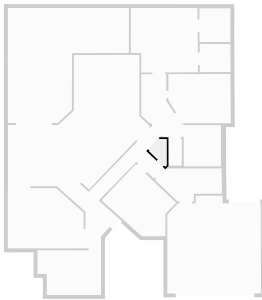
▼ Living Room
Ground Floor

WIDTH: 4.89 m • LENGTH: 3.89 m
AREA: 17.59 m² • PERIMETER: 16.57 m



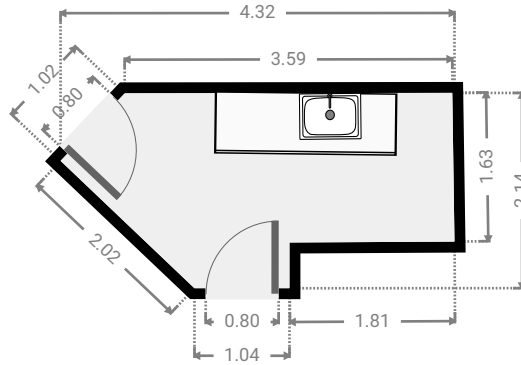
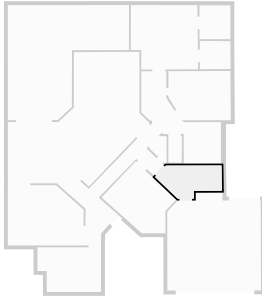
▼ Hall
Ground Floor

WIDTH: 1.46 m • LENGTH: 1.34 m
AREA: 1.20 m² • PERIMETER: 4.73 m



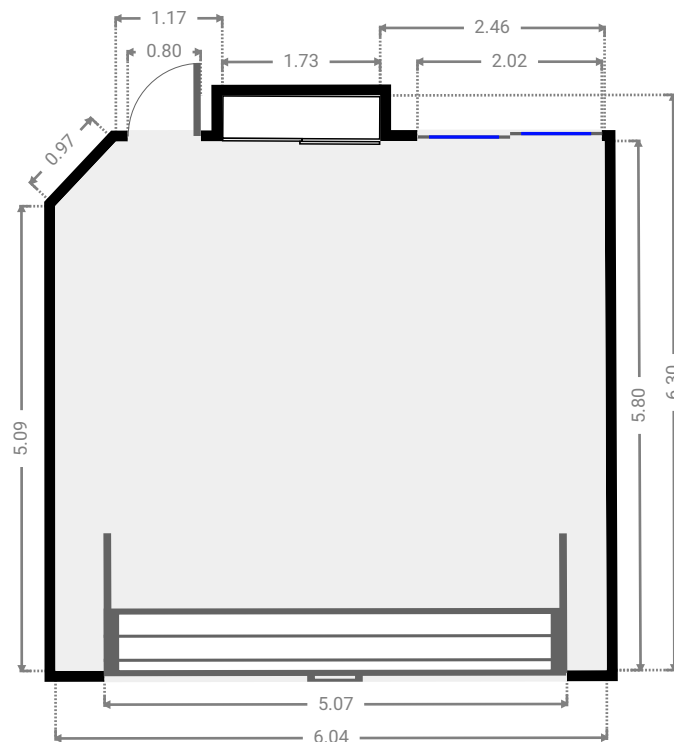
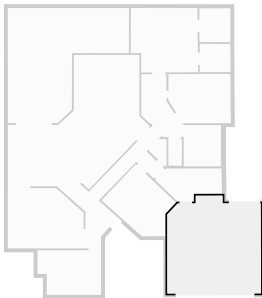
▼ Laundry Room
Ground Floor

WIDTH: 4.32 m • LENGTH: 2.14 m
AREA: 7.01 m² • PERIMETER: 11.62 m



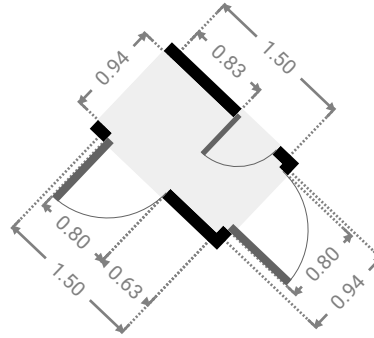
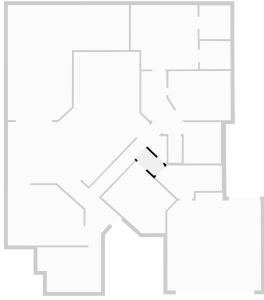
▼ Garage
Ground Floor

WIDTH: 6.04 m • LENGTH: 6.30 m
AREA: 35.63 m² • PERIMETER: 24.27 m



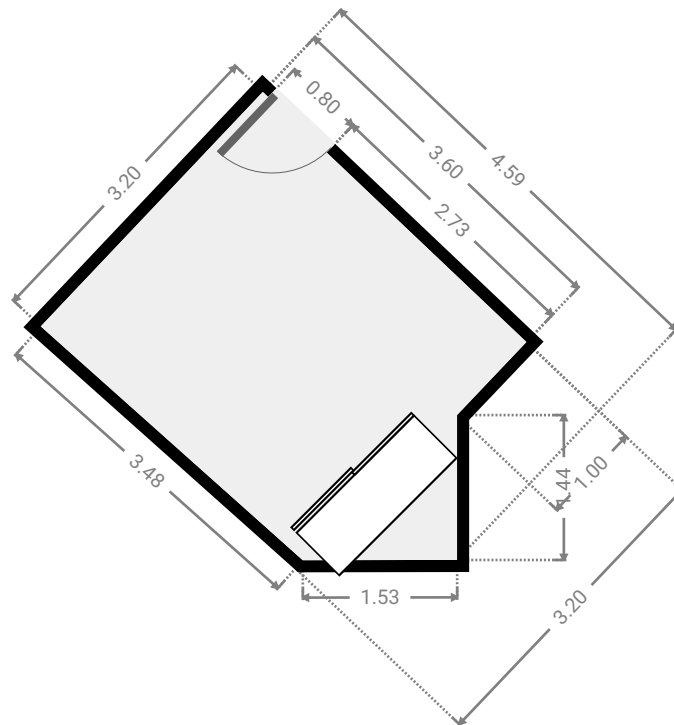
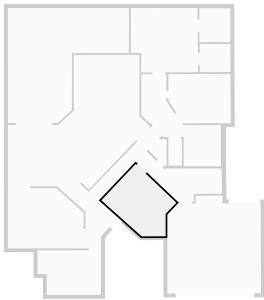
▼ **Hall**
Ground Floor

WIDTH: 1.50 m • LENGTH: 0.94 m
AREA: 1.41 m² • PERIMETER: 4.88 m



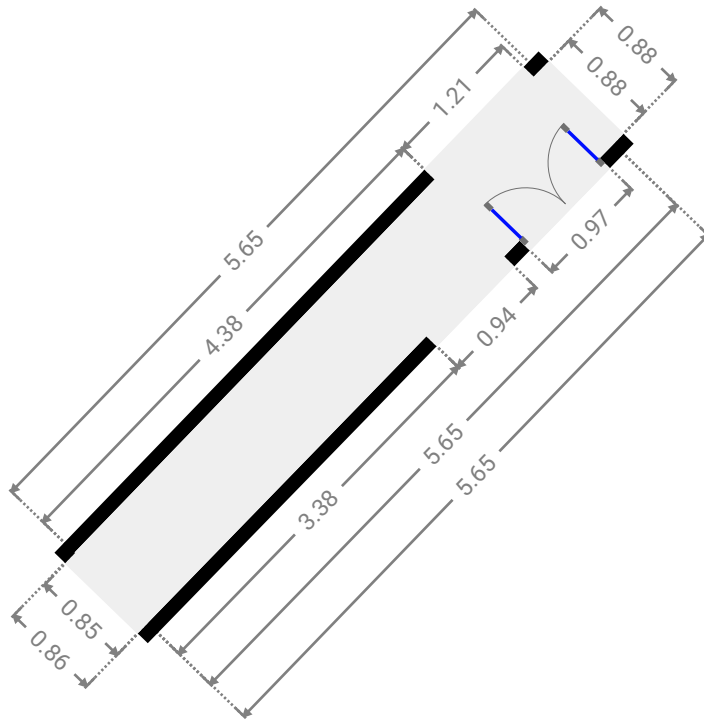
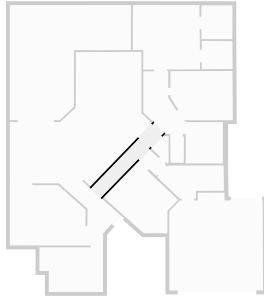
▼ **Bedroom**
Ground Floor

WIDTH: 4.59 m • LENGTH: 3.20 m
AREA: 12.28 m² • PERIMETER: 14.24 m



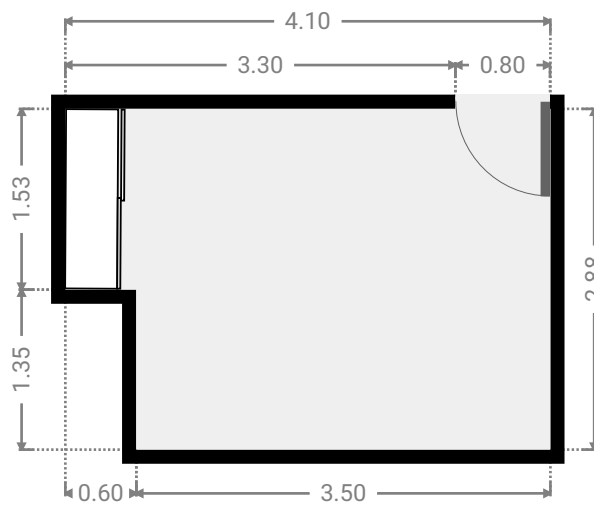
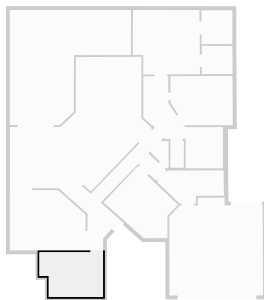
▼ **Hall**
Ground Floor

WIDTH: 0.88 m • LENGTH: 5.65 m
AREA: 4.91 m² • PERIMETER: 13.04 m



▼ **Bedroom**
Ground Floor

WIDTH: 4.10 m • LENGTH: 2.88 m
AREA: 11.00 m² • PERIMETER: 13.96 m



▼ **Hall**
Ground Floor

WIDTH: 3.66 m • LENGTH: 2.89 m
AREA: 5.55 m² • PERIMETER: 11.39 m

