

16 Smithwick Street

Created on
2021-08-31

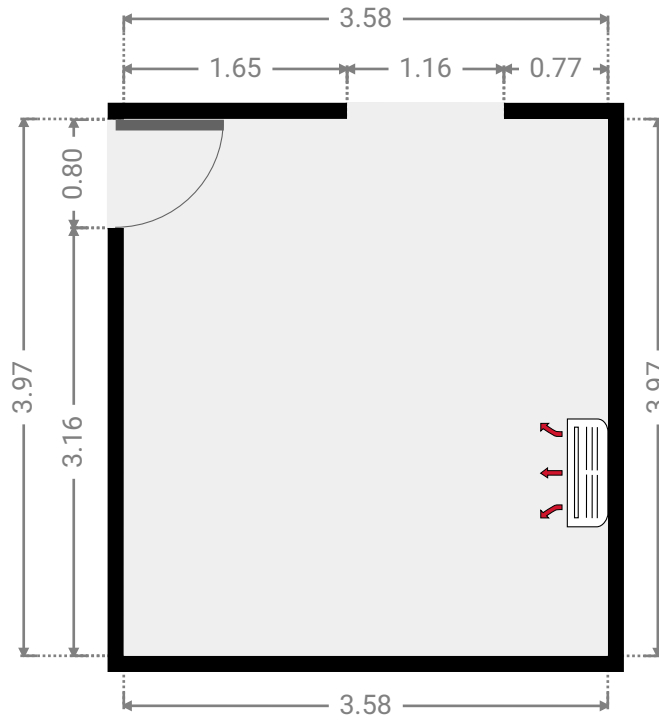
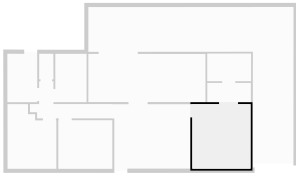
Floors
1

▼ Ground Floor



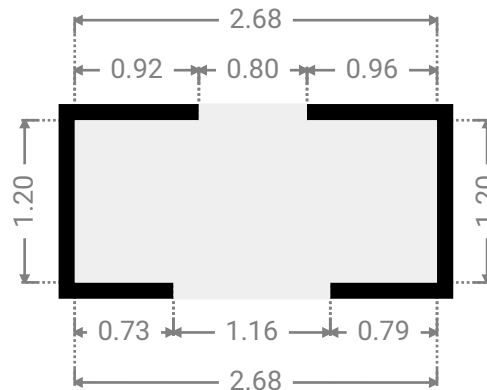
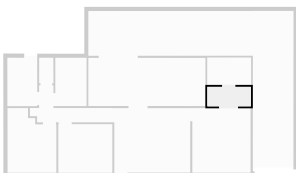
▼ **Master Bedroom**
Ground Floor

WIDTH: 3.58 m • LENGTH: 3.97 m
AREA: 14.22 m² • PERIMETER: 15.10 m



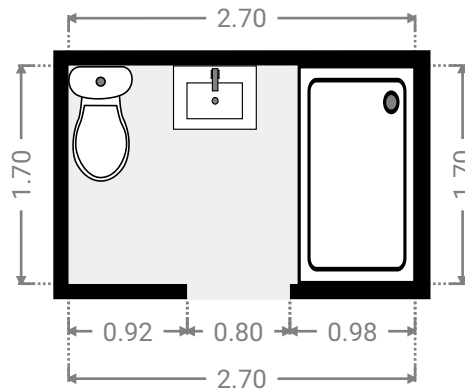
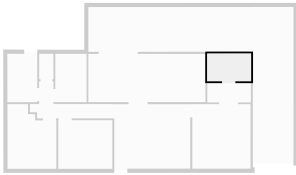
▼ **Closet**
Ground Floor

WIDTH: 2.68 m • LENGTH: 1.20 m
AREA: 3.21 m² • PERIMETER: 7.76 m



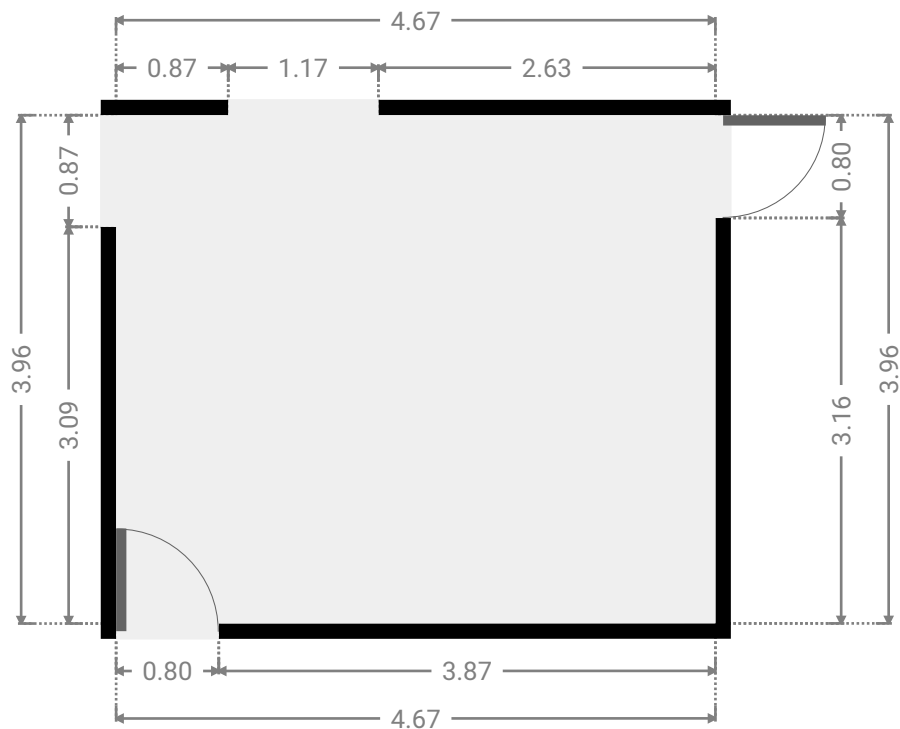
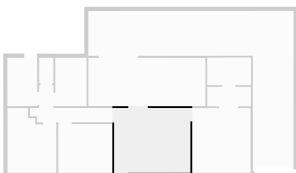
▼ Bathroom
Ground Floor

WIDTH: 2.70 m • LENGTH: 1.70 m
AREA: 4.59 m² • PERIMETER: 8.80 m



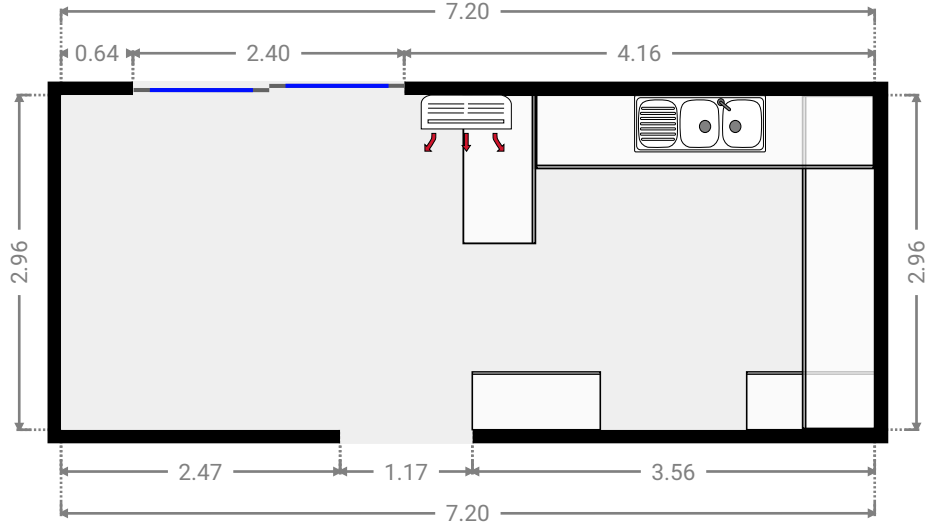
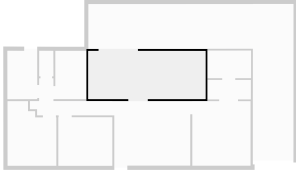
▼ Living Room
Ground Floor

WIDTH: 4.67 m • LENGTH: 3.96 m
AREA: 18.50 m² • PERIMETER: 17.26 m



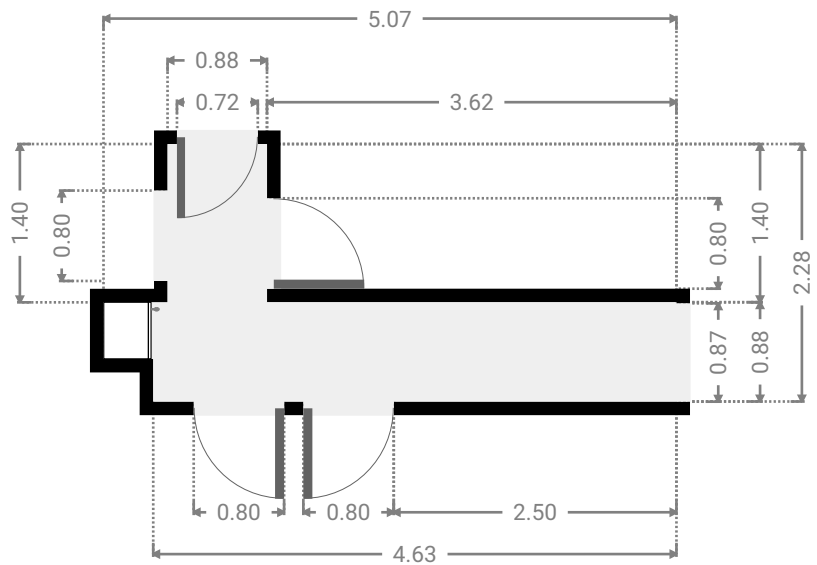
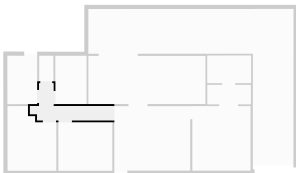
▼ Kitchen
Ground Floor

WIDTH: 7.20 m • LENGTH: 2.96 m
AREA: 21.32 m² • PERIMETER: 20.32 m



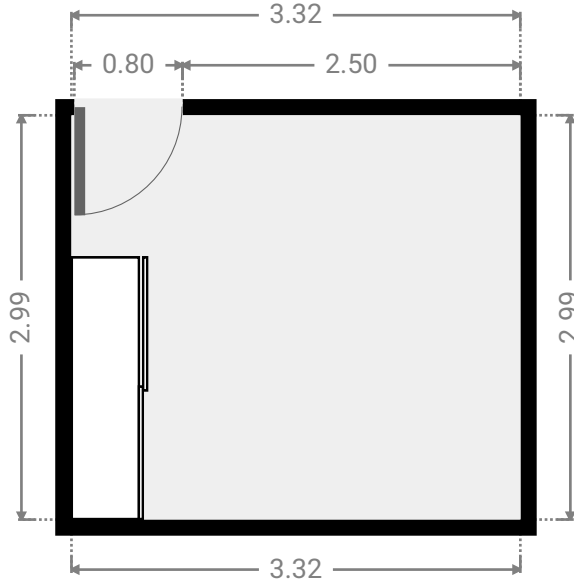
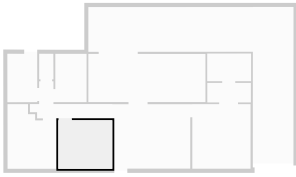
▼ Hall
Ground Floor

WIDTH: 5.07 m • LENGTH: 2.28 m
AREA: 5.52 m² • PERIMETER: 14.70 m



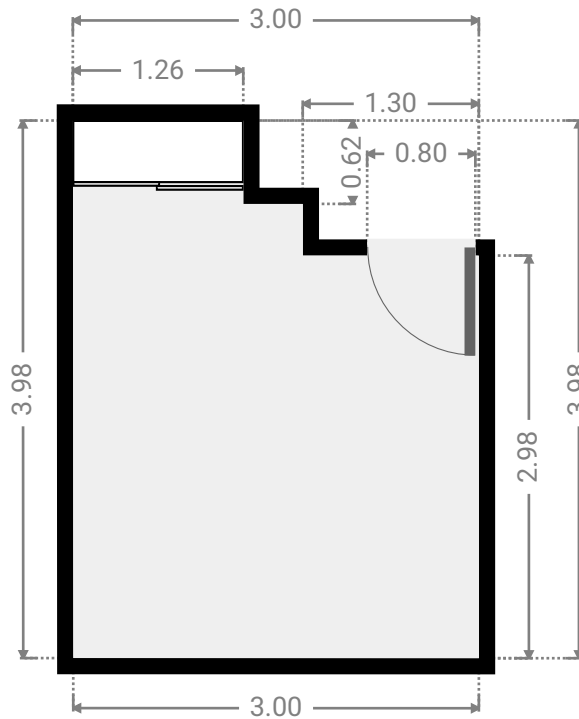
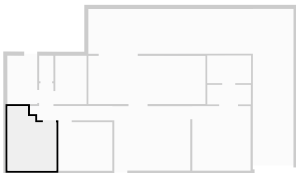
▼ **Bedroom**
Ground Floor

WIDTH: 3.32 m • LENGTH: 2.99 m
AREA: 9.93 m² • PERIMETER: 12.62 m



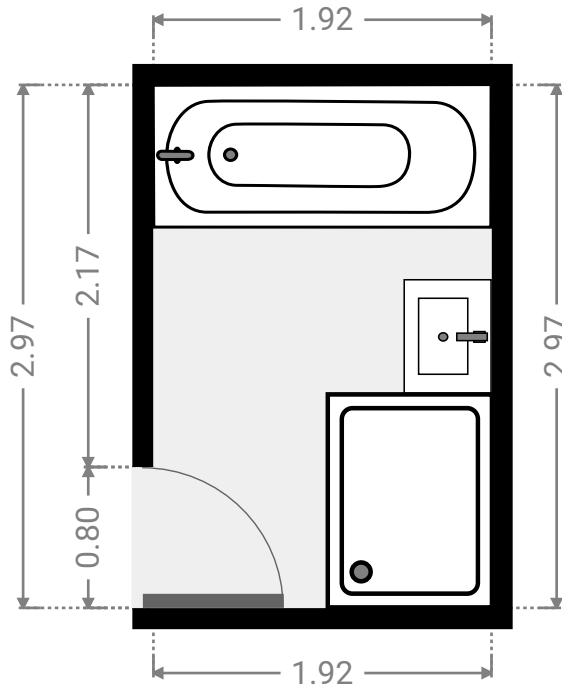
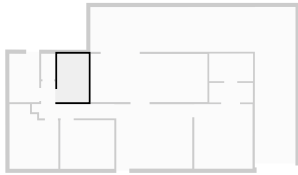
▼ **Bedroom**
Ground Floor

WIDTH: 3.00 m • LENGTH: 3.98 m
AREA: 10.36 m² • PERIMETER: 13.95 m



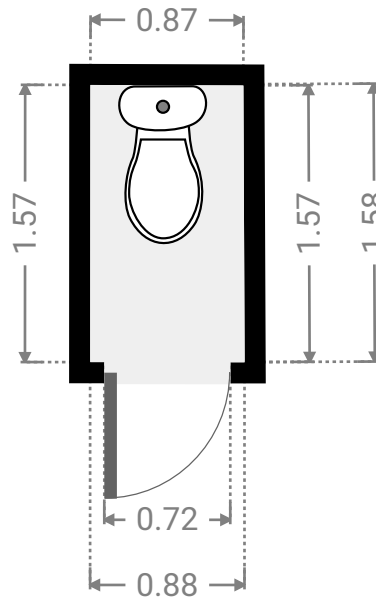
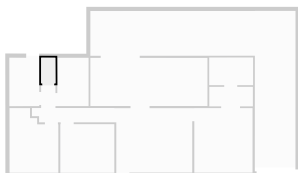
▼ Bathroom
Ground Floor

WIDTH: 1.92 m • LENGTH: 2.97 m
AREA: 5.70 m² • PERIMETER: 9.78 m



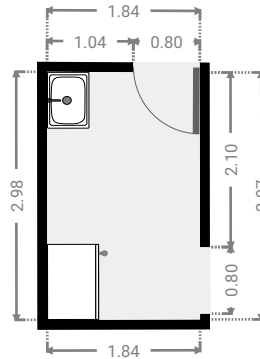
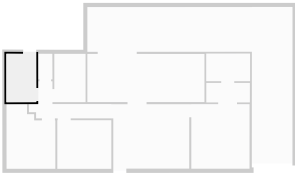
▼ Toilet
Ground Floor

WIDTH: 0.88 m • LENGTH: 1.58 m
AREA: 1.37 m² • PERIMETER: 4.89 m



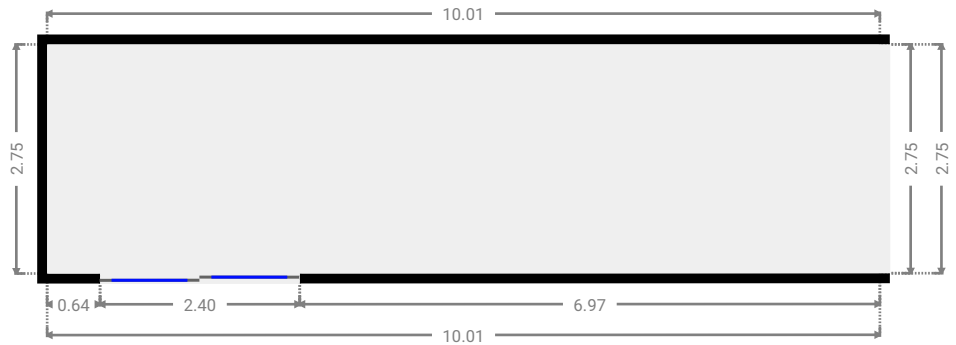
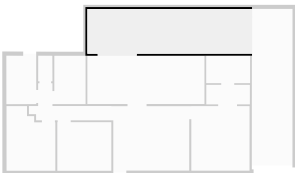
▼ Laundry Room
Ground Floor

WIDTH: 1.84 m • LENGTH: 2.98 m
AREA: 5.46 m² • PERIMETER: 9.62 m



▼ Other
Ground Floor

WIDTH: 10.01 m • LENGTH: 2.75 m
AREA: 27.54 m² • PERIMETER: 25.52 m



▼ **Garage**
Ground Floor

WIDTH: 2.50 m • LENGTH: 9.50 m
AREA: 23.74 m² • PERIMETER: 24.00 m

