

16 Rundle Street

SUBMITTED BY

Ray White Rockhampton Casey
stockers@cqoz.com

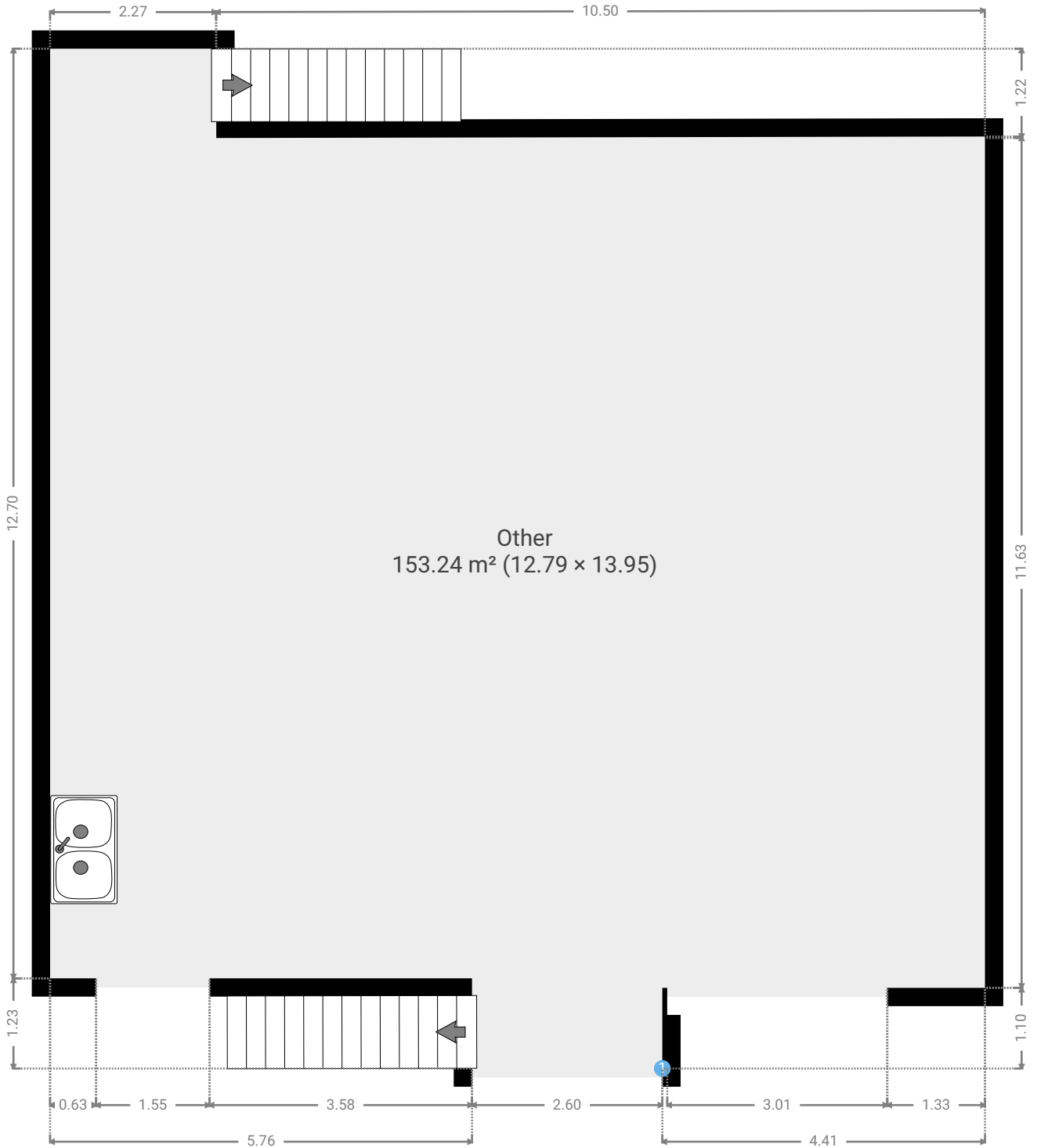
CREATED ON

2022-11-09

Floors

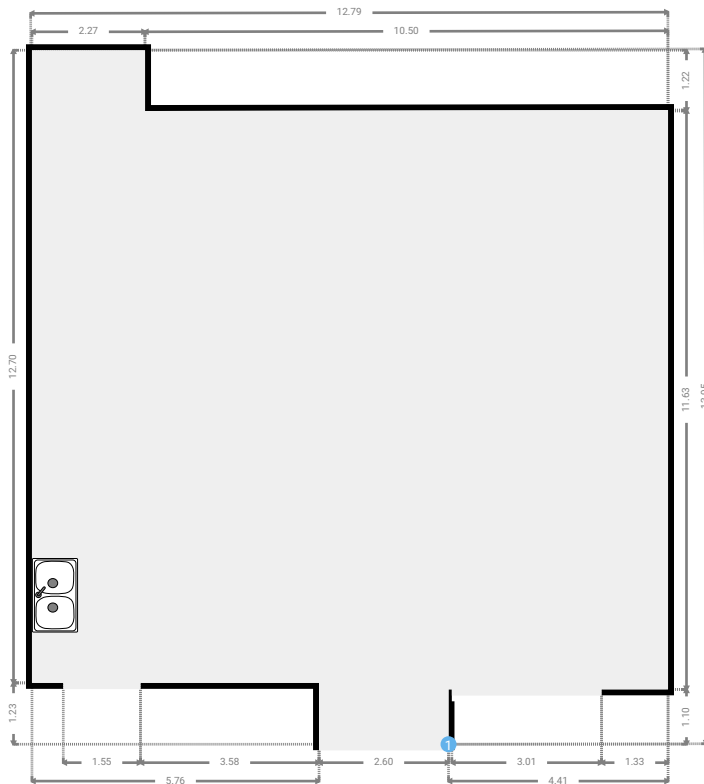
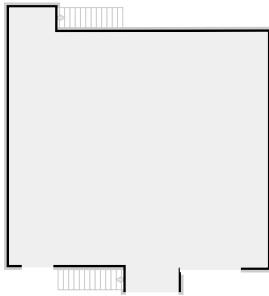
2

▼ Ground Floor



▼ Other Ground Floor

WIDTH: 12.79 m • LENGTH: 13.95 m
AREA: 153.24 m² • PERIMETER: 53.42 m



▼ Other/Ground Floor

1 OPENING

Height
0.00 m

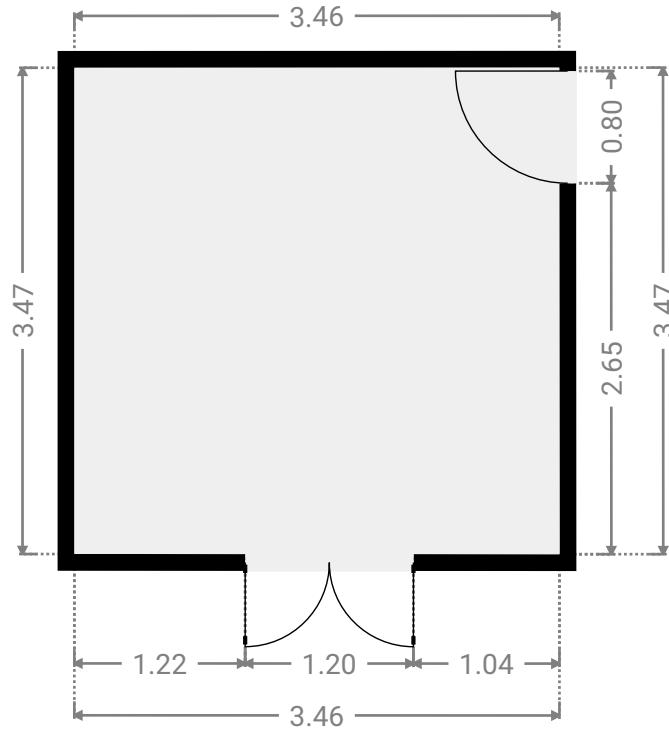
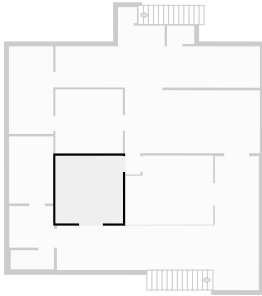


▼ 1st Floor



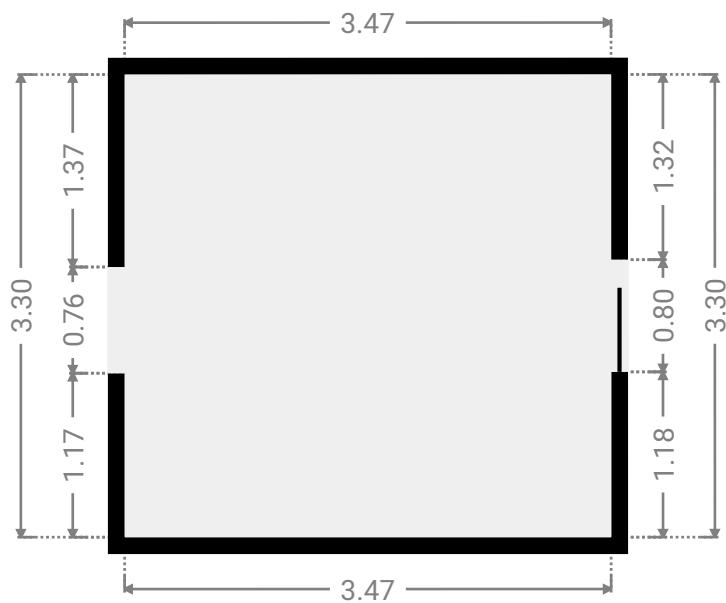
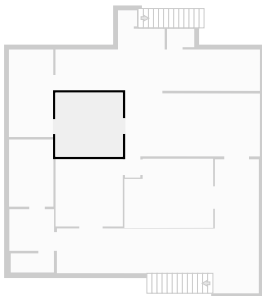
▼ **Bedroom**
1st Floor

WIDTH: 3.46 m • LENGTH: 3.47 m
AREA: 12.00 m² • PERIMETER: 13.86 m



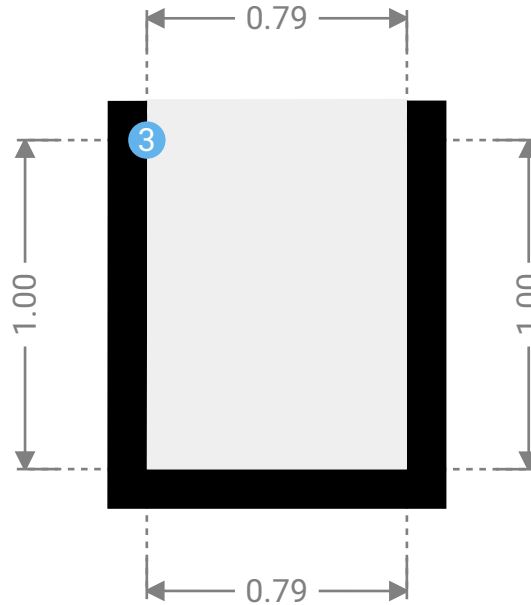
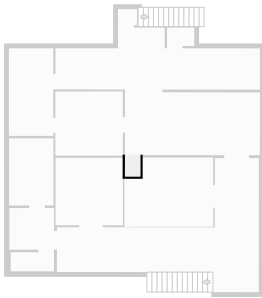
▼ **Bedroom**
1st Floor

WIDTH: 3.47 m • LENGTH: 3.30 m
AREA: 11.45 m² • PERIMETER: 13.54 m



▼ **Hall**
1st Floor

WIDTH: 0.79 m • LENGTH: 1.00 m
AREA: 0.79 m² • PERIMETER: 3.58 m



▼ **Hall/1st Floor**

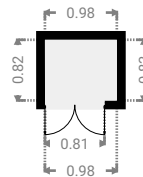
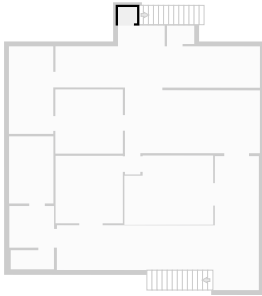
3 OPENING

Height
0.00 m



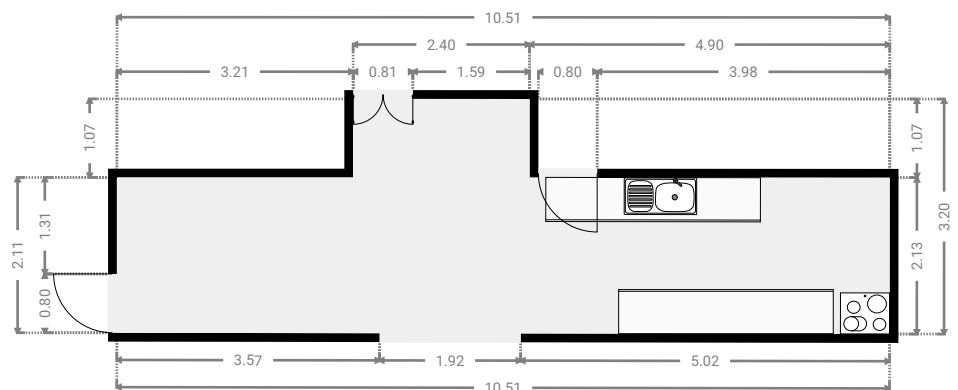
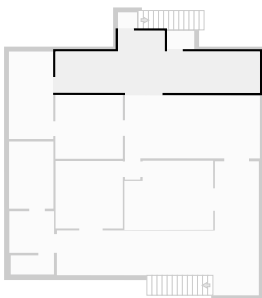
▼ Hall 1st Floor

WIDTH: 0.98 m • LENGTH: 0.83 m
AREA: 0.81 m² • PERIMETER: 3.61 m



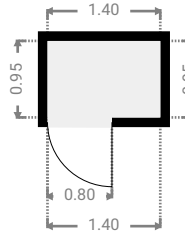
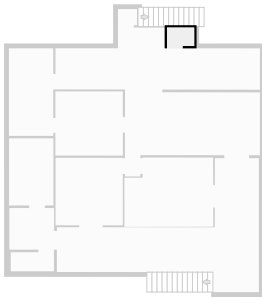
▼ Kitchen 1st Floor

WIDTH: 10.51 m • LENGTH: 3.20 m
AREA: 24.85 m² • PERIMETER: 27.40 m



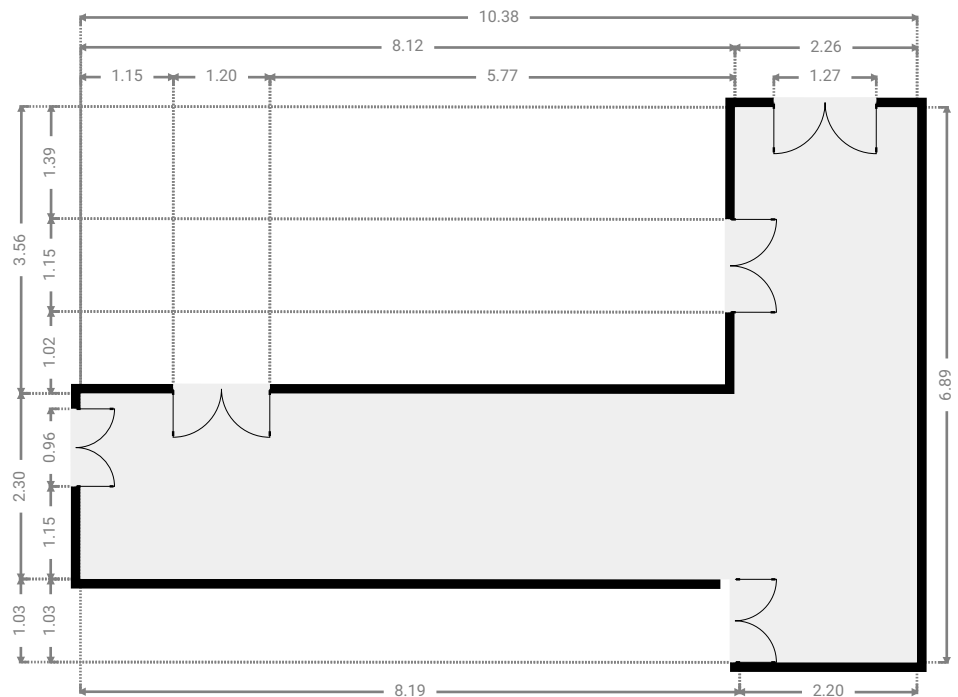
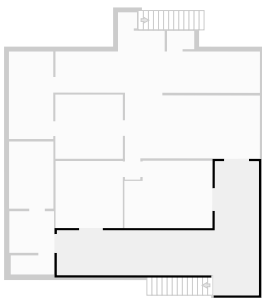
▼ Closet
1st Floor

WIDTH: 1.40 m • LENGTH: 0.95 m
AREA: 1.33 m² • PERIMETER: 4.70 m



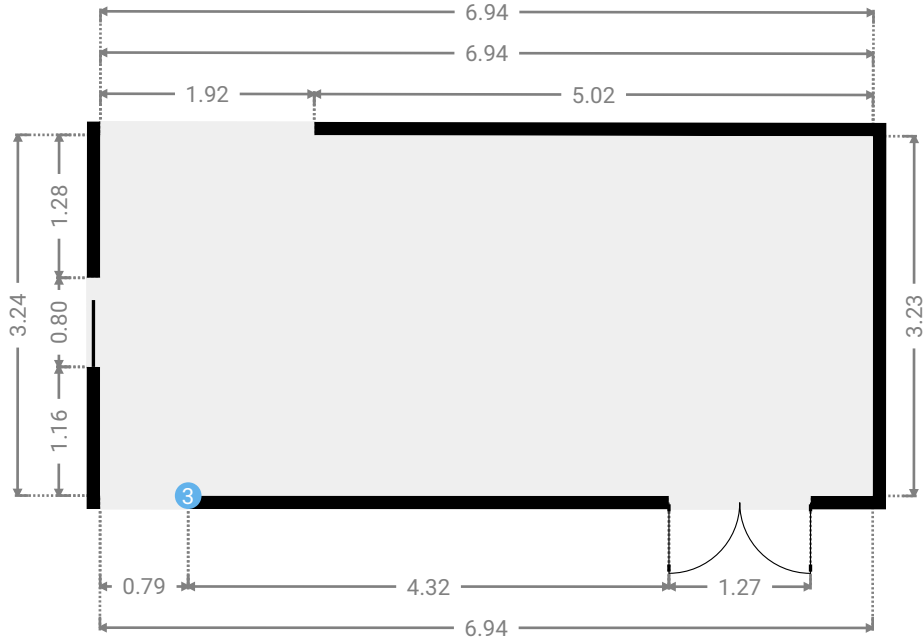
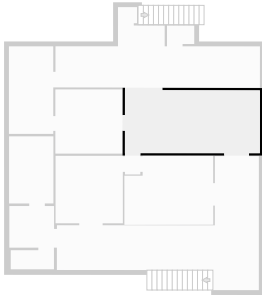
▼ Living Room
1st Floor

WIDTH: 10.38 m • LENGTH: 6.89 m
AREA: 34.20 m² • PERIMETER: 34.55 m



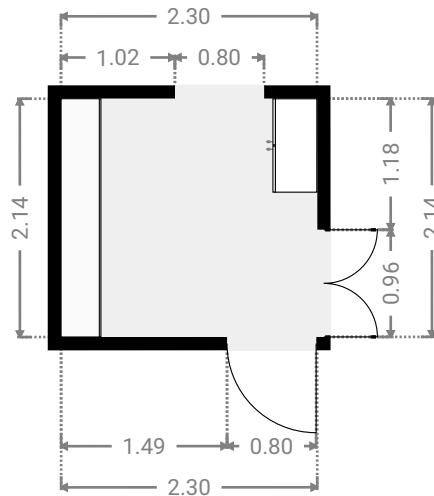
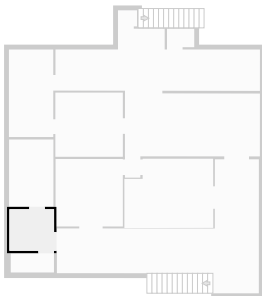
▼ **Living Room**
1st Floor

WIDTH: 6.94 m • LENGTH: 3.24 m
AREA: 22.45 m² • PERIMETER: 20.35 m



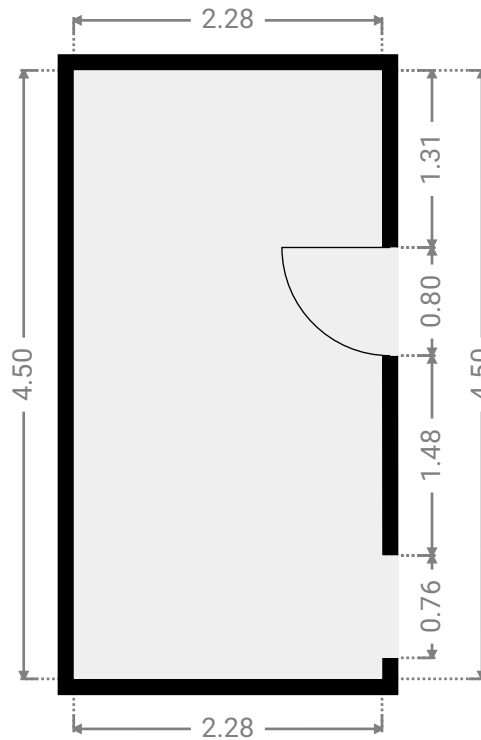
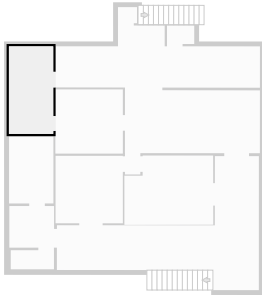
▼ **Other**
1st Floor

WIDTH: 2.30 m • LENGTH: 2.14 m
AREA: 4.92 m² • PERIMETER: 8.88 m



▼ **Study**
1st Floor

WIDTH: 2.28 m • LENGTH: 4.50 m
AREA: 10.26 m² • PERIMETER: 13.56 m



▼ **Toilet**
1st Floor

WIDTH: 2.22 m • LENGTH: 0.98 m
AREA: 2.18 m² • PERIMETER: 6.40 m

