

# 16 Laird Avenue

**SUBMITTED BY**

Ray White Rockhampton Casey  
stockers@cqoz.com

---

**CREATED ON**

2022-09-26

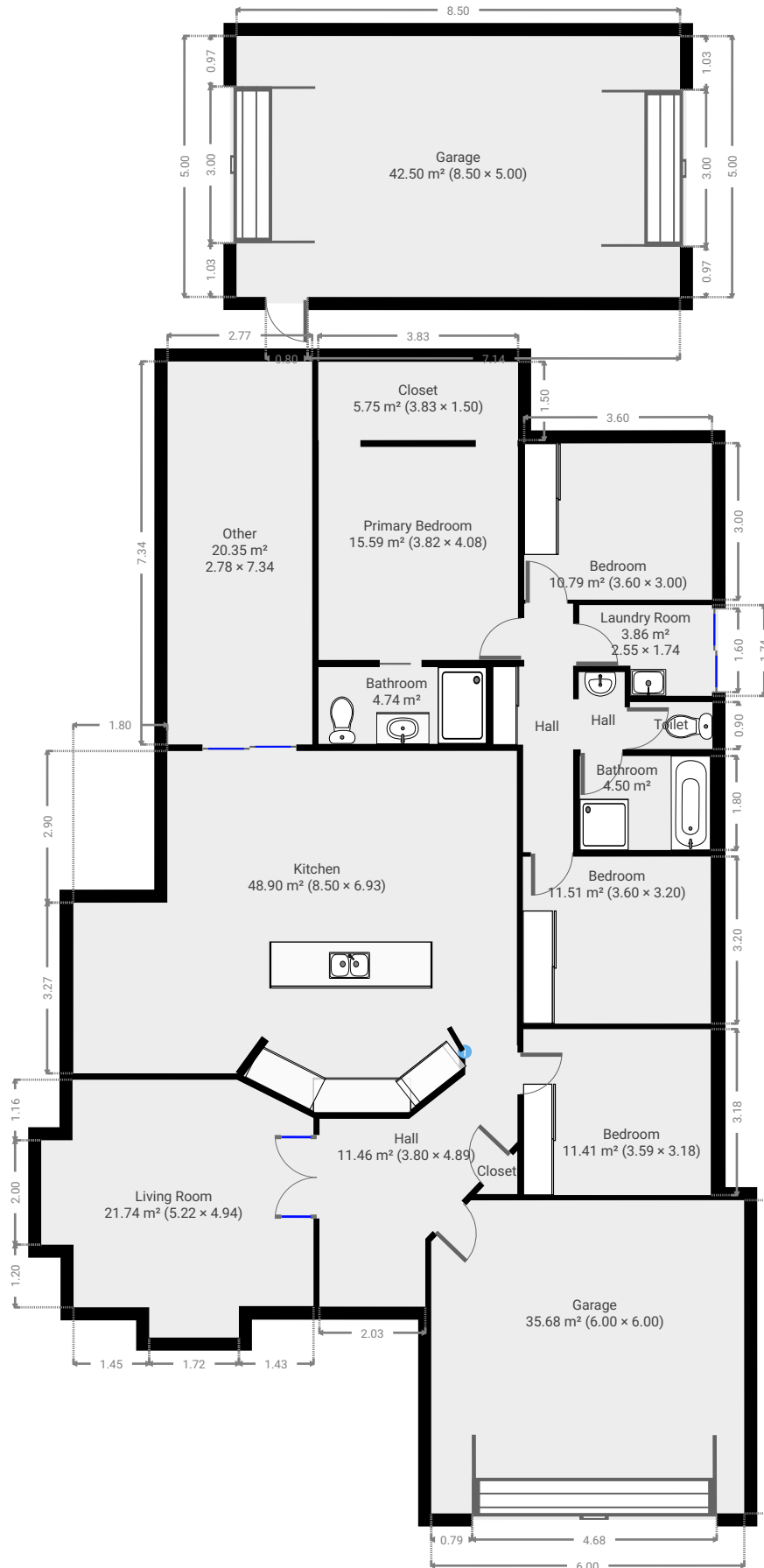
---

**Floors**

1

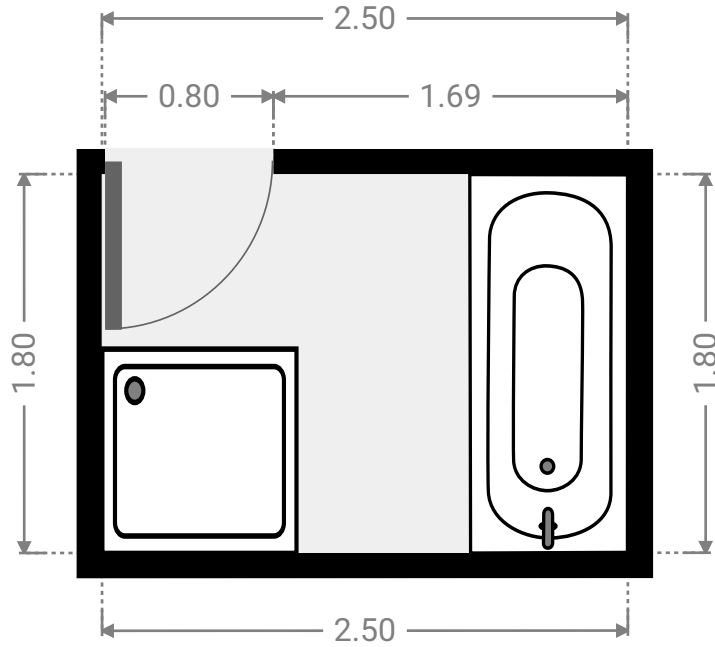
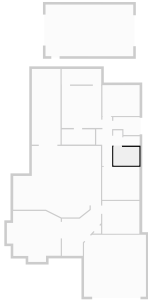
---

▼ Ground Floor



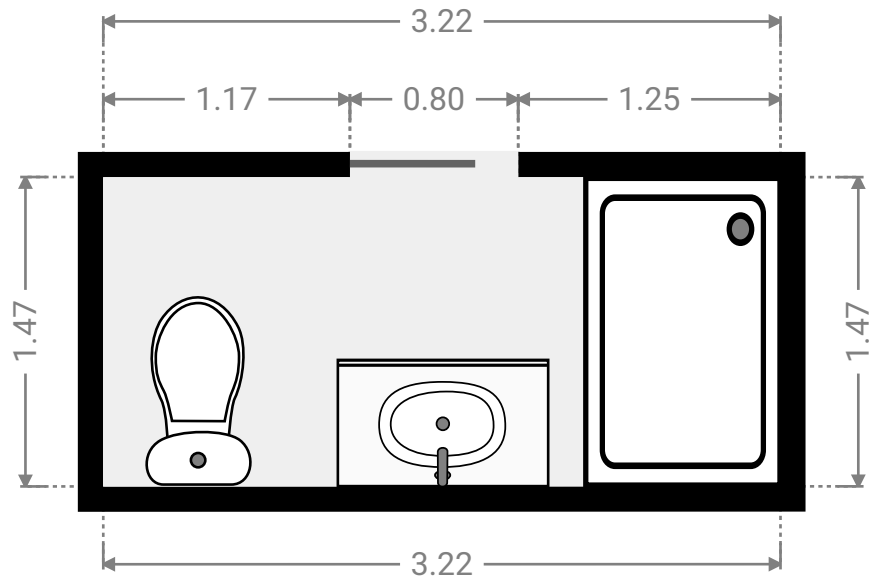
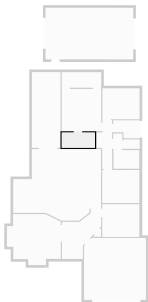
▼ Bathroom  
Ground Floor

WIDTH: 2.50 m • LENGTH: 1.80 m  
AREA: 4.50 m<sup>2</sup> • PERIMETER: 8.60 m



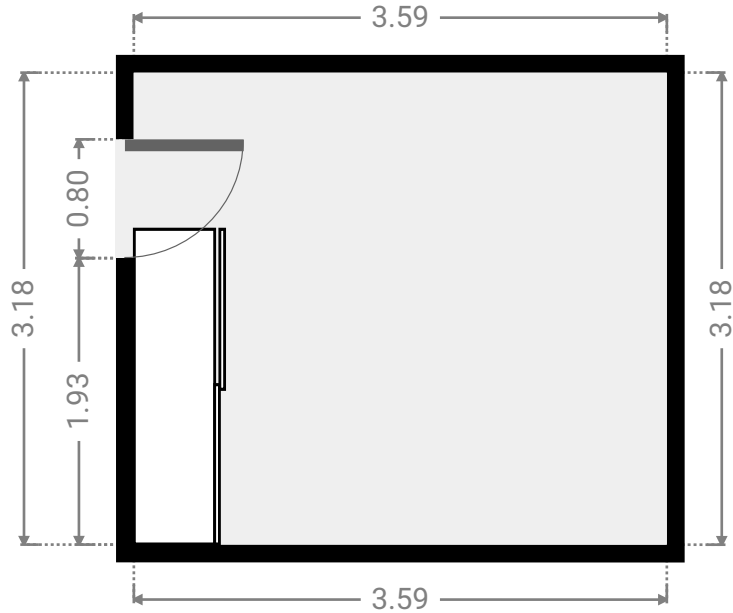
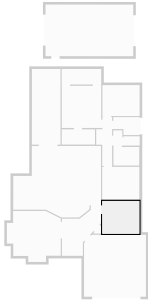
▼ Bathroom  
Ground Floor

WIDTH: 3.22 m • LENGTH: 1.47 m  
AREA: 4.74 m<sup>2</sup> • PERIMETER: 9.38 m



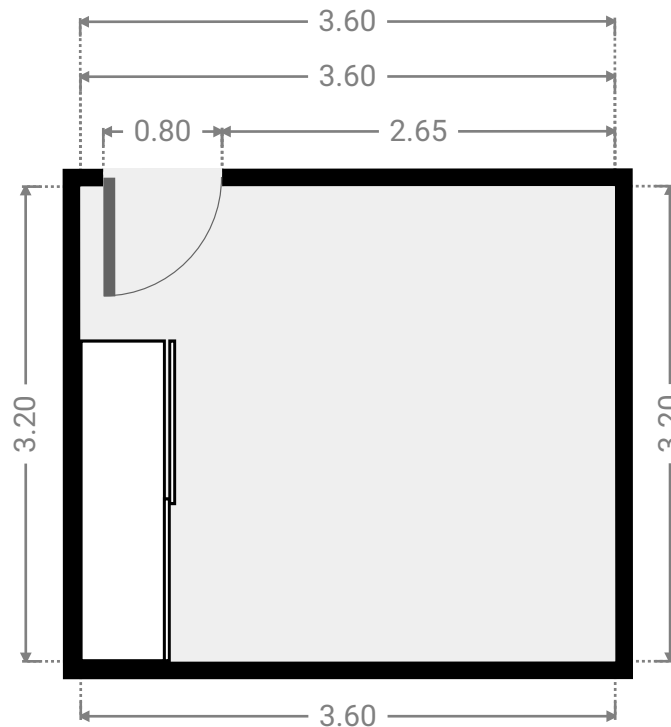
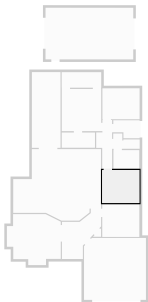
▼ **Bedroom**  
Ground Floor

WIDTH: 3.59 m • LENGTH: 3.18 m  
AREA: 11.41 m<sup>2</sup> • PERIMETER: 13.54 m



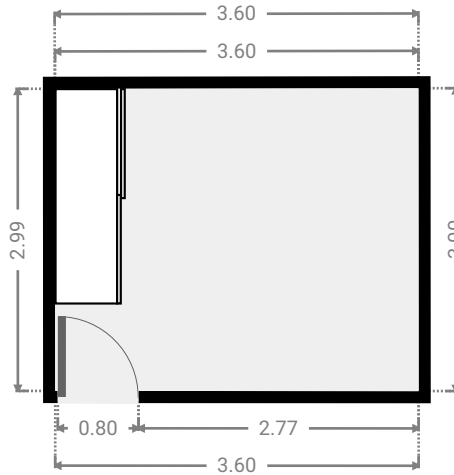
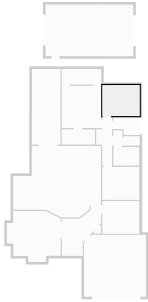
▼ **Bedroom**  
Ground Floor

WIDTH: 3.60 m • LENGTH: 3.20 m  
AREA: 11.51 m<sup>2</sup> • PERIMETER: 13.60 m



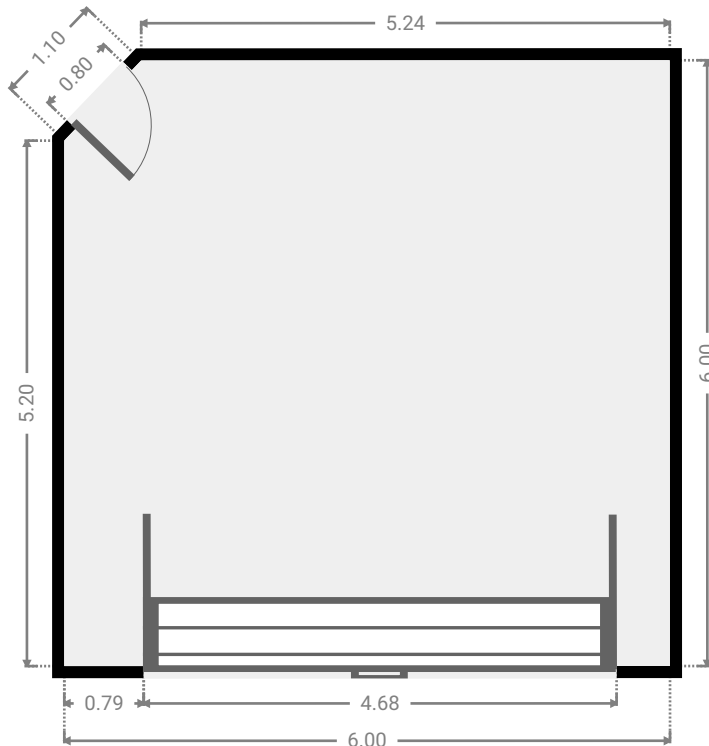
▼ **Bedroom**  
Ground Floor

WIDTH: 3.60 m • LENGTH: 3.00 m  
AREA: 10.79 m<sup>2</sup> • PERIMETER: 13.19 m



▼ **Garage**  
Ground Floor

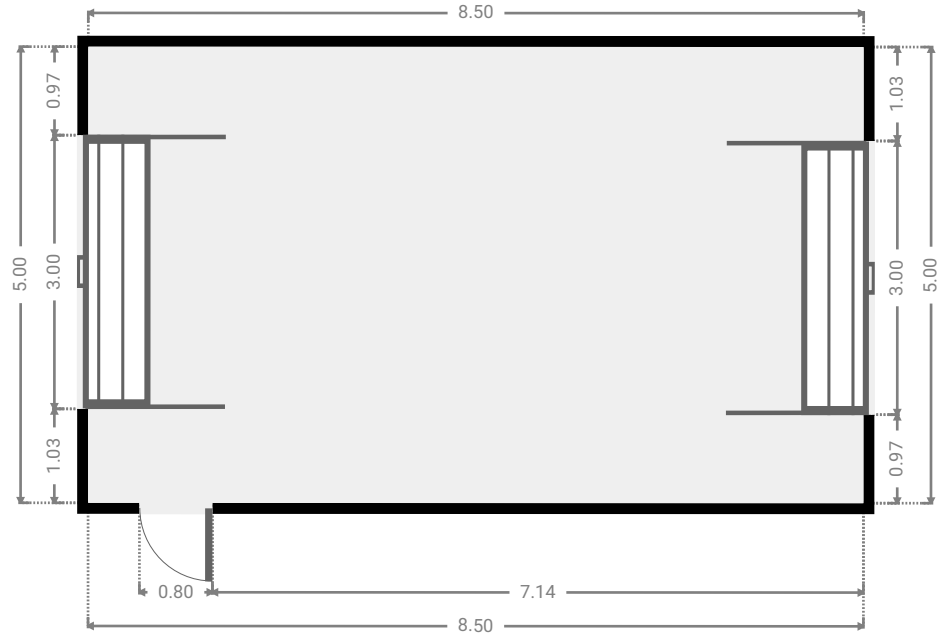
WIDTH: 6.00 m • LENGTH: 6.00 m  
AREA: 35.68 m<sup>2</sup> • PERIMETER: 23.54 m



FLOORS: 1

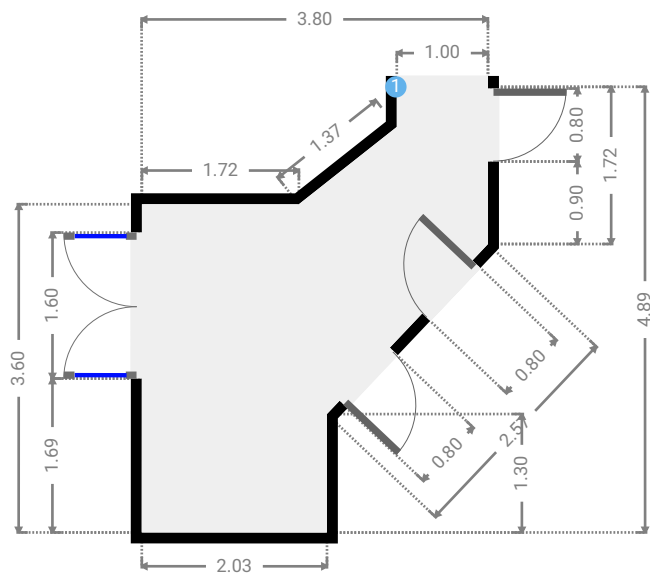
▼ **Garage**  
Ground Floor

WIDTH: 8.50 m • LENGTH: 5.00 m  
AREA: 42.50 m<sup>2</sup> • PERIMETER: 27.00 m



▼ **Hall**  
Ground Floor

WIDTH: 3.80 m • LENGTH: 4.89 m  
AREA: 11.46 m<sup>2</sup> • PERIMETER: 15.74 m



▼ **Hall**/Ground Floor

1 **OPENING**

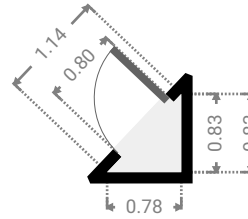
Height  
0.00 m



FLOORS: 1

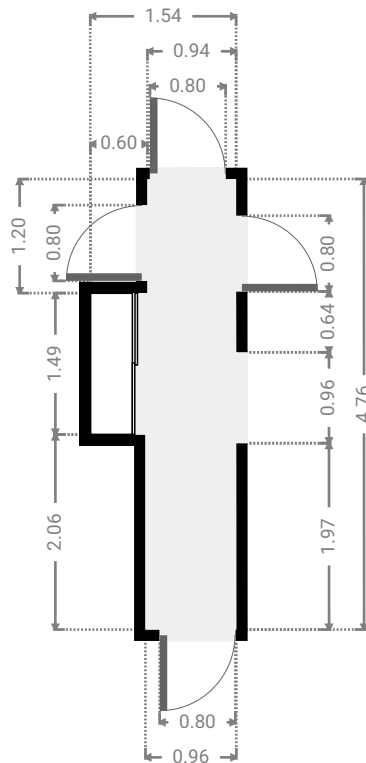
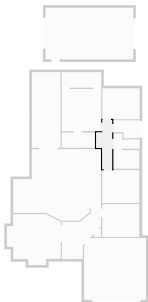
▼ **Closet**  
Ground Floor

WIDTH: 0.78 m • LENGTH: 0.83 m  
AREA: 0.32 m<sup>2</sup> • PERIMETER: 2.75 m



▼ **Hall**  
Ground Floor

WIDTH: 1.54 m • LENGTH: 4.76 m  
AREA: 5.41 m<sup>2</sup> • PERIMETER: 12.60 m

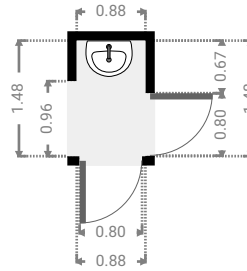
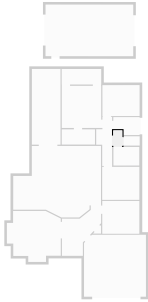




FLOORS: 1

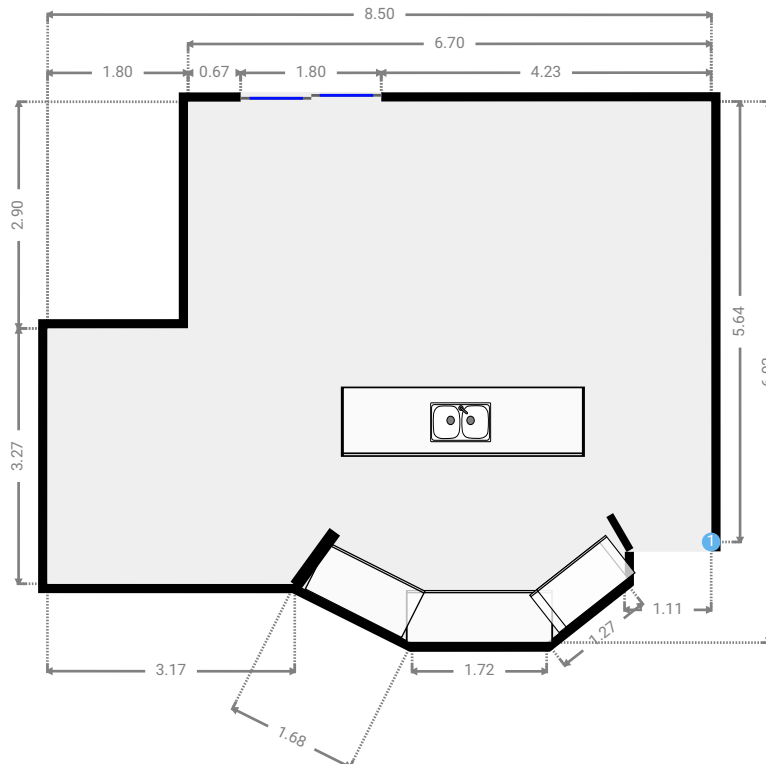
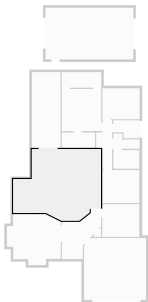
▼ **Hall**  
Ground Floor

WIDTH: 0.88 m • LENGTH: 1.48 m  
AREA: 1.30 m<sup>2</sup> • PERIMETER: 4.72 m



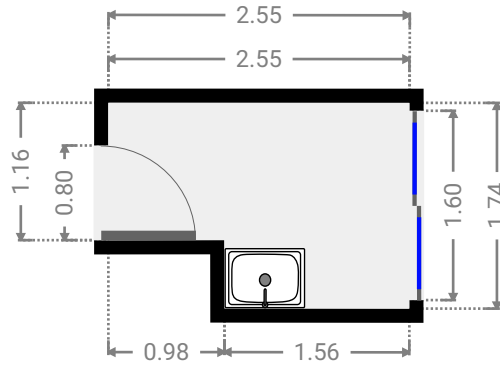
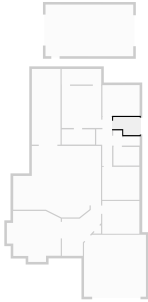
▼ **Kitchen**  
Ground Floor

WIDTH: 8.50 m • LENGTH: 6.93 m  
AREA: 48.90 m<sup>2</sup> • PERIMETER: 29.77 m



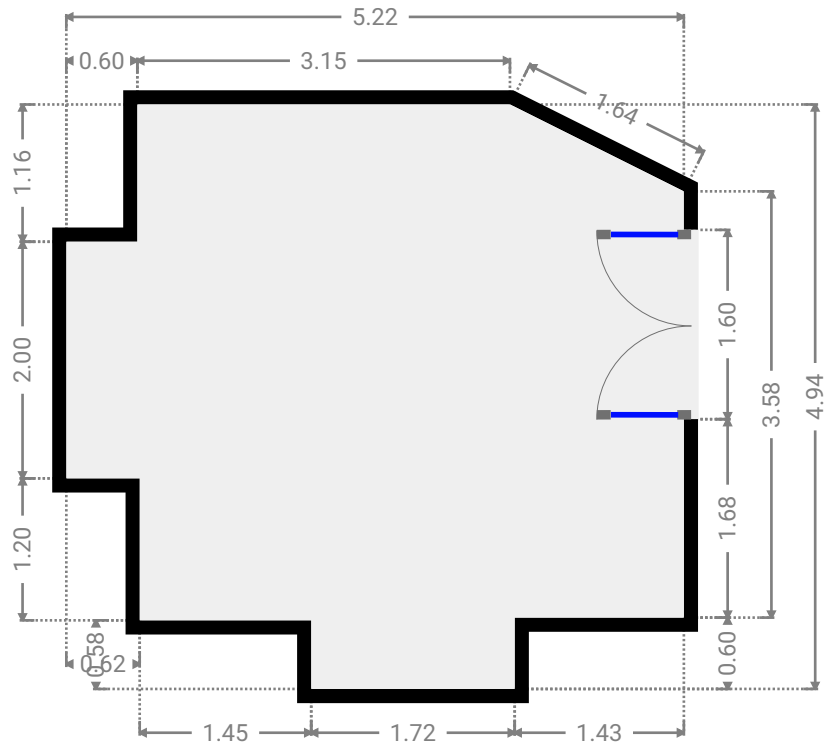
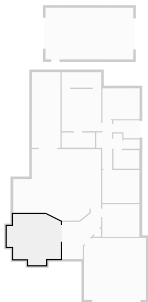
▼ Laundry Room  
Ground Floor

WIDTH: 2.55 m • LENGTH: 1.74 m  
AREA: 3.86 m<sup>2</sup> • PERIMETER: 8.57 m



▼ Living Room  
Ground Floor

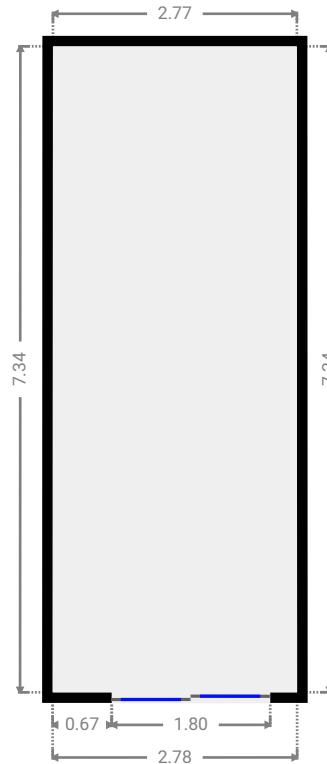
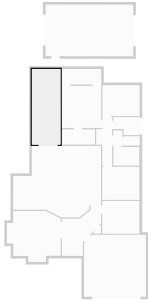
WIDTH: 5.22 m • LENGTH: 4.94 m  
AREA: 21.74 m<sup>2</sup> • PERIMETER: 19.76 m



FLOORS: 1

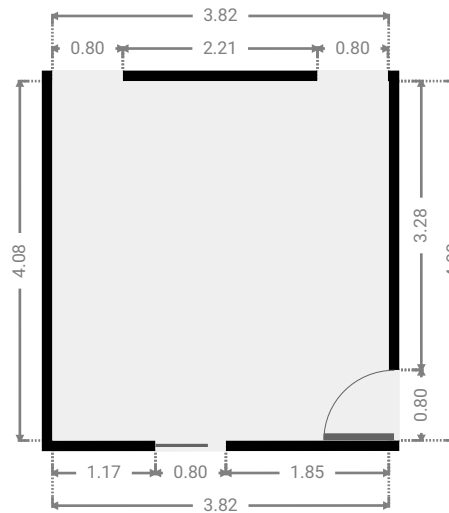
▼ **Other**  
Ground Floor

WIDTH: 2.78 m • LENGTH: 7.34 m  
AREA: 20.35 m<sup>2</sup> • PERIMETER: 20.22 m



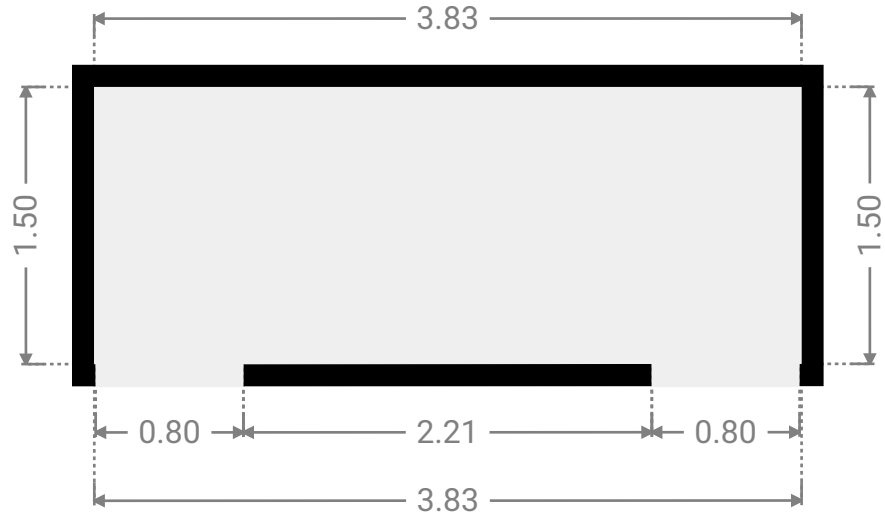
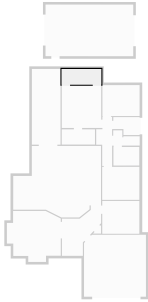
▼ **Primary Bedroom**  
Ground Floor

WIDTH: 3.82 m • LENGTH: 4.08 m  
AREA: 15.59 m<sup>2</sup> • PERIMETER: 15.80 m



▼ **Closet**  
Ground Floor

WIDTH: 3.83 m • LENGTH: 1.50 m  
AREA: 5.75 m<sup>2</sup> • PERIMETER: 10.66 m



▼ **Toilet**  
Ground Floor

WIDTH: 1.58 m • LENGTH: 0.90 m  
AREA: 1.42 m<sup>2</sup> • PERIMETER: 4.96 m

