

16 Bradley Place

SUBMITTED BY

Ray White Rockhampton Casey
stockers@cqoz.com

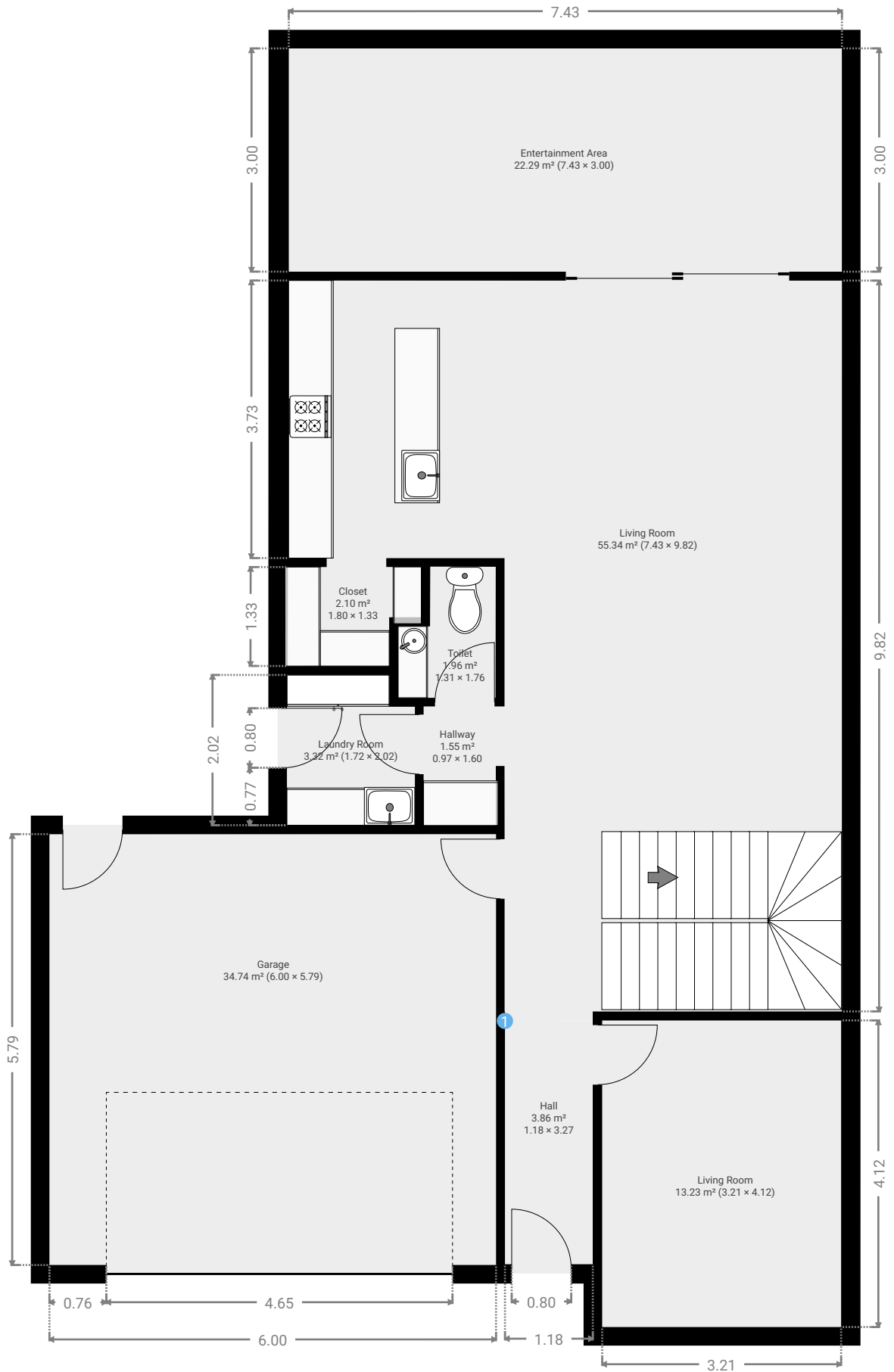
CREATED ON

2022-11-14

Floors

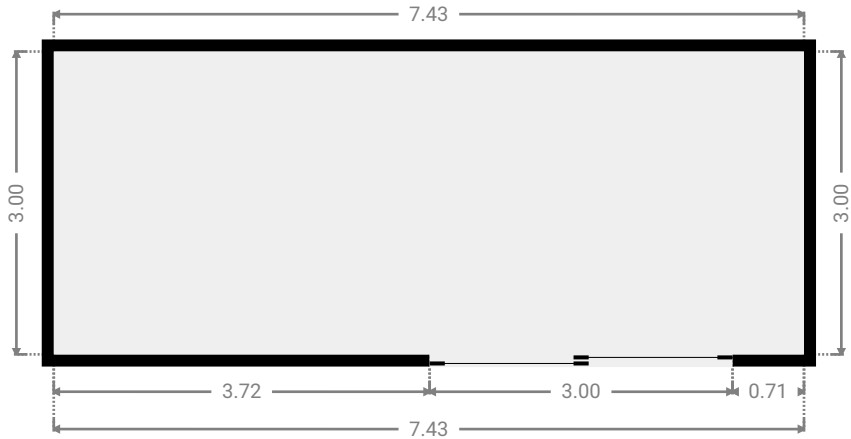
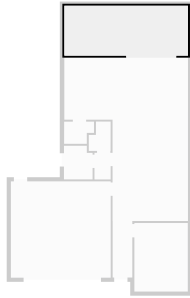
2

▼ Ground Floor



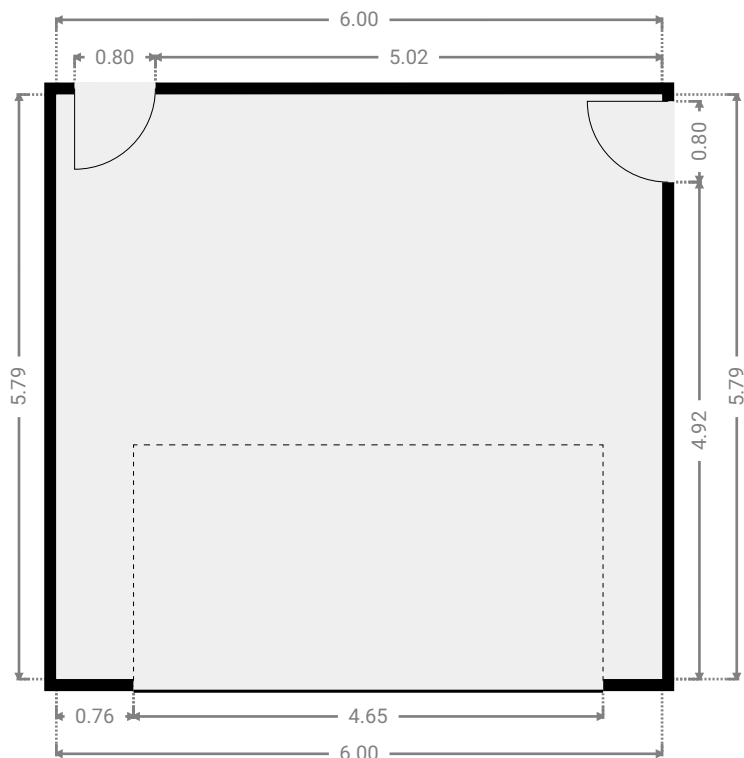
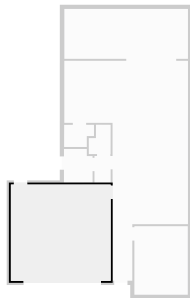
▼ **Entertainment Area**
Ground Floor

WIDTH: 7.43 m • LENGTH: 3.00 m
AREA: 22.29 m² • PERIMETER: 20.86 m



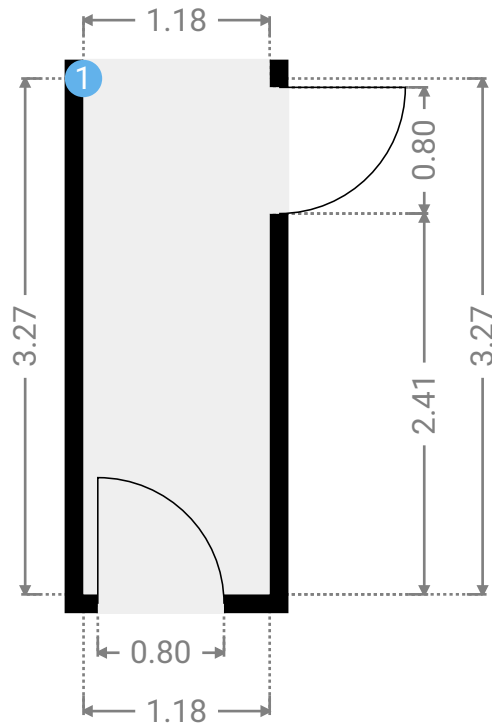
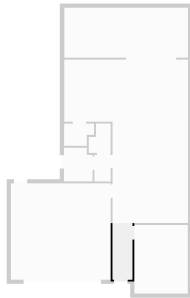
▼ **Garage**
Ground Floor

WIDTH: 6.00 m • LENGTH: 5.79 m
AREA: 34.74 m² • PERIMETER: 23.58 m



▼ Hall Ground Floor

WIDTH: 1.18 m • LENGTH: 3.27 m
AREA: 3.86 m² • PERIMETER: 8.90 m



▼ Hall/Ground Floor

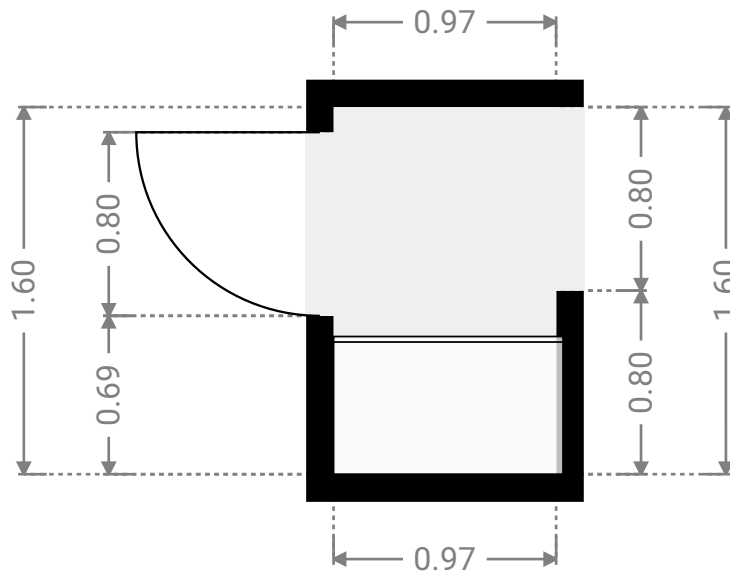
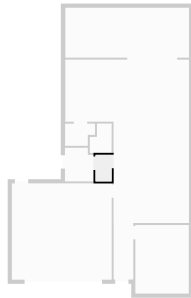
1 OPENING

Height
0.00 m



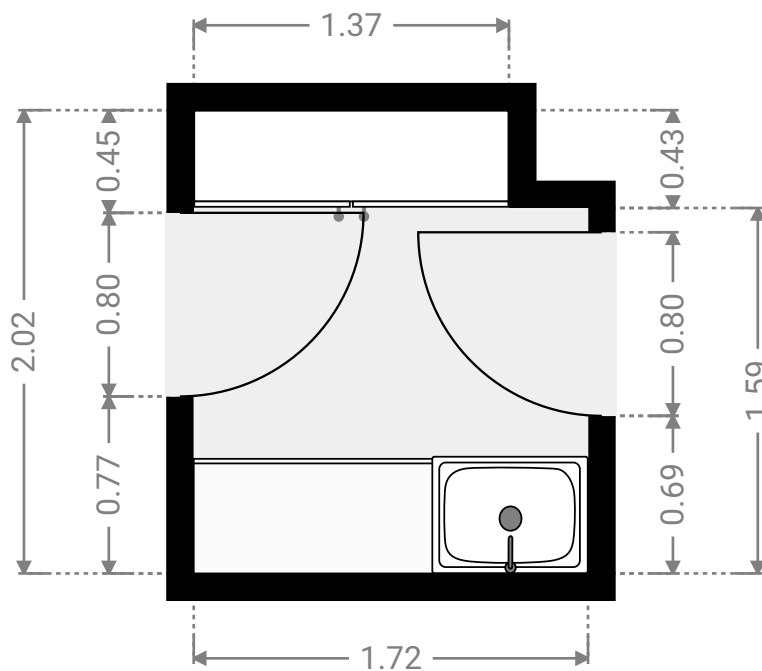
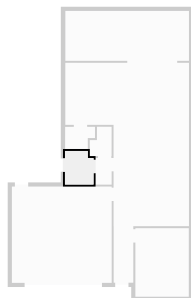
▼ **Hallway**
Ground Floor

WIDTH: 0.97 m • LENGTH: 1.60 m
AREA: 1.55 m² • PERIMETER: 5.14 m



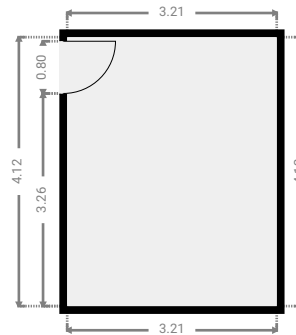
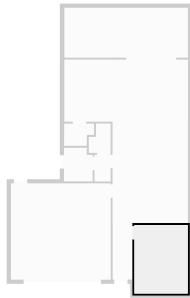
▼ **Laundry Room**
Ground Floor

WIDTH: 1.72 m • LENGTH: 2.02 m
AREA: 3.32 m² • PERIMETER: 7.47 m



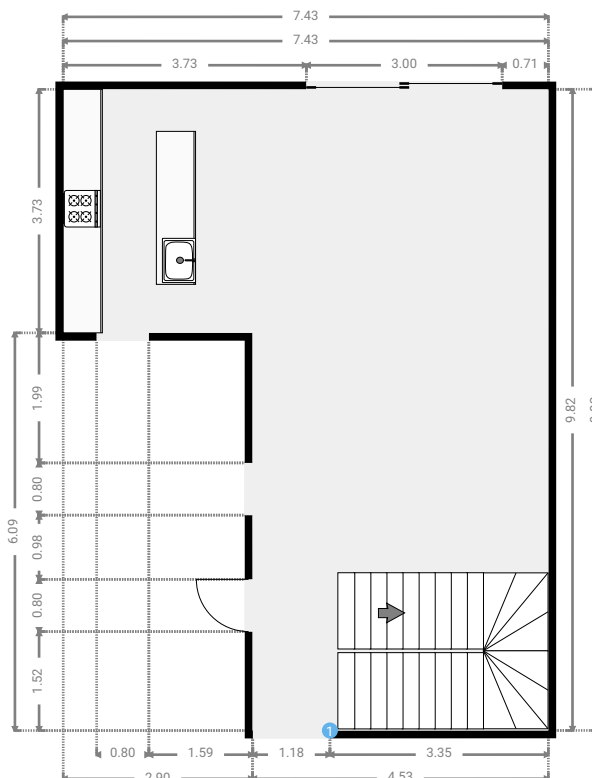
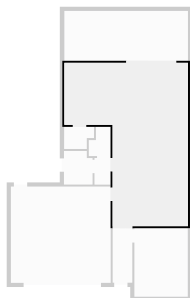
▼ **Living Room**
Ground Floor

WIDTH: 3.21 m • LENGTH: 4.12 m
AREA: 13.23 m² • PERIMETER: 14.66 m



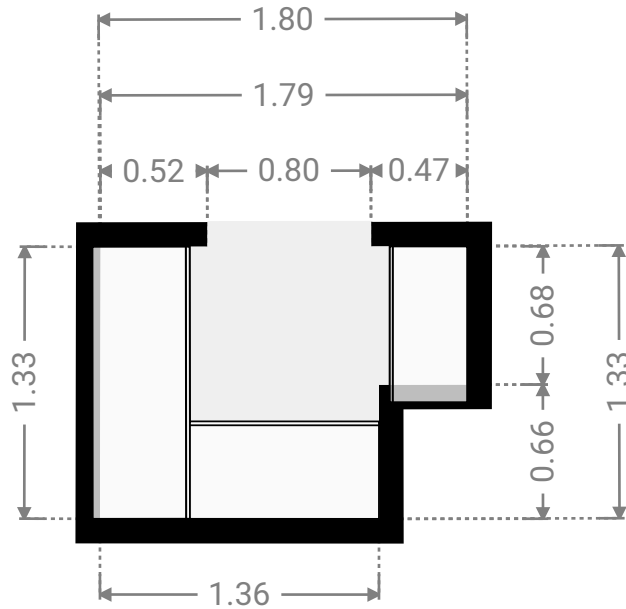
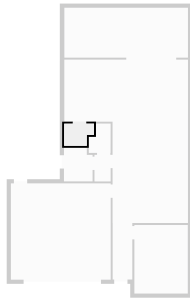
▼ **Living Room**
Ground Floor

WIDTH: 7.43 m • LENGTH: 9.82 m
AREA: 55.34 m² • PERIMETER: 34.51 m



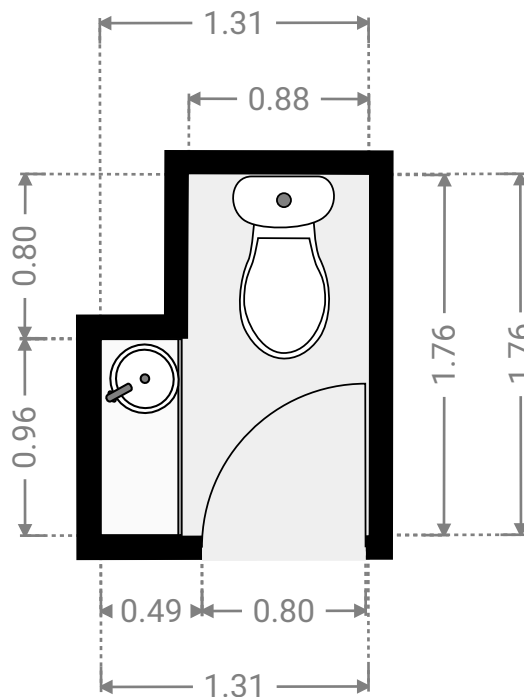
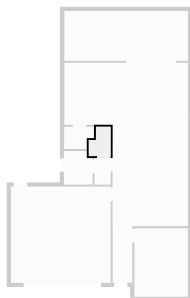
▼ Closet
Ground Floor

WIDTH: 1.80 m • LENGTH: 1.33 m
AREA: 2.10 m² • PERIMETER: 6.25 m

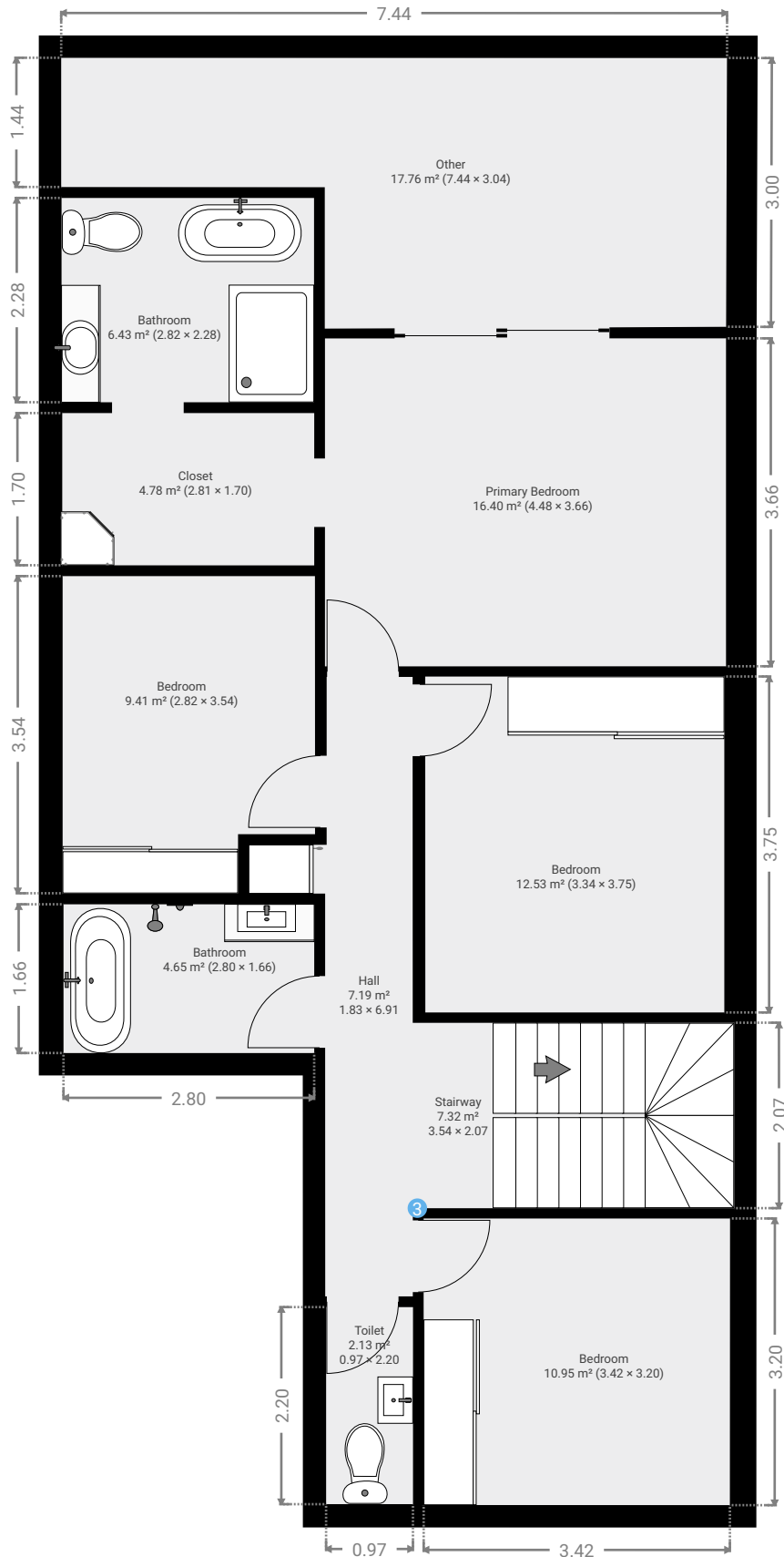


▼ Toilet
Ground Floor

WIDTH: 1.31 m • LENGTH: 1.76 m
AREA: 1.96 m² • PERIMETER: 6.14 m

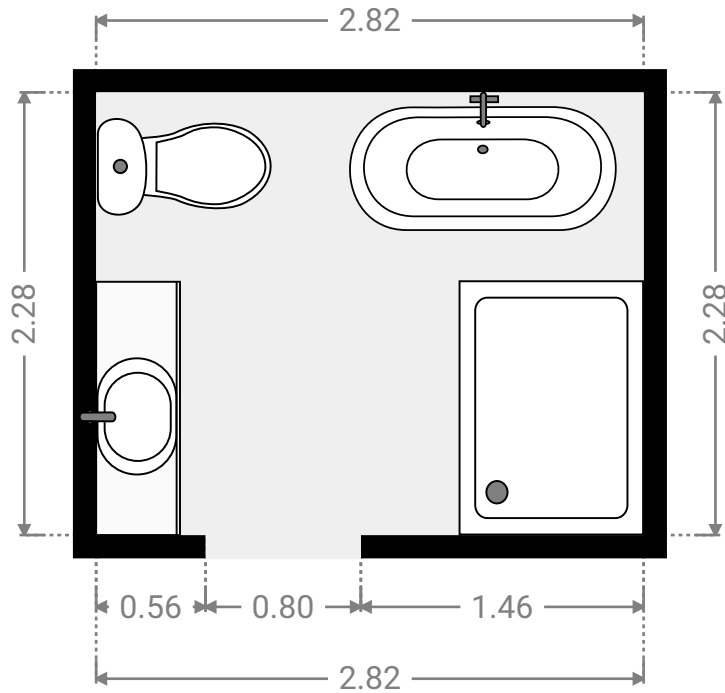
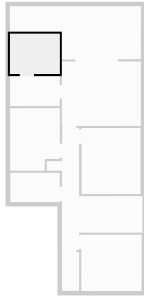


▼ 1st Floor



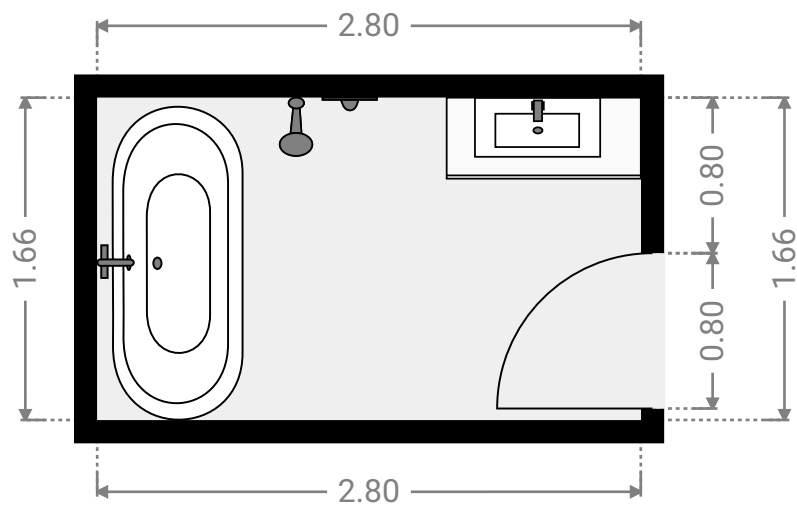
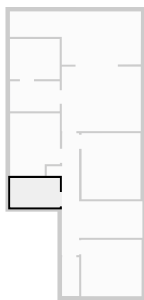
▼ **Bathroom**
1st Floor

WIDTH: 2.82 m • LENGTH: 2.28 m
AREA: 6.43 m² • PERIMETER: 10.20 m



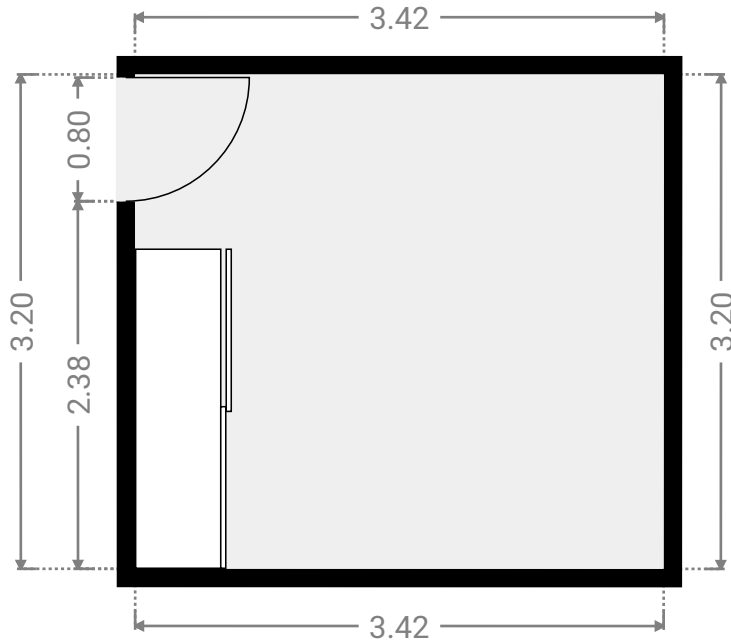
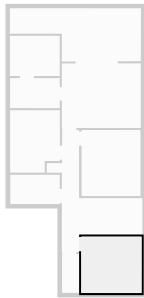
▼ **Bathroom**
1st Floor

WIDTH: 2.80 m • LENGTH: 1.66 m
AREA: 4.65 m² • PERIMETER: 8.92 m



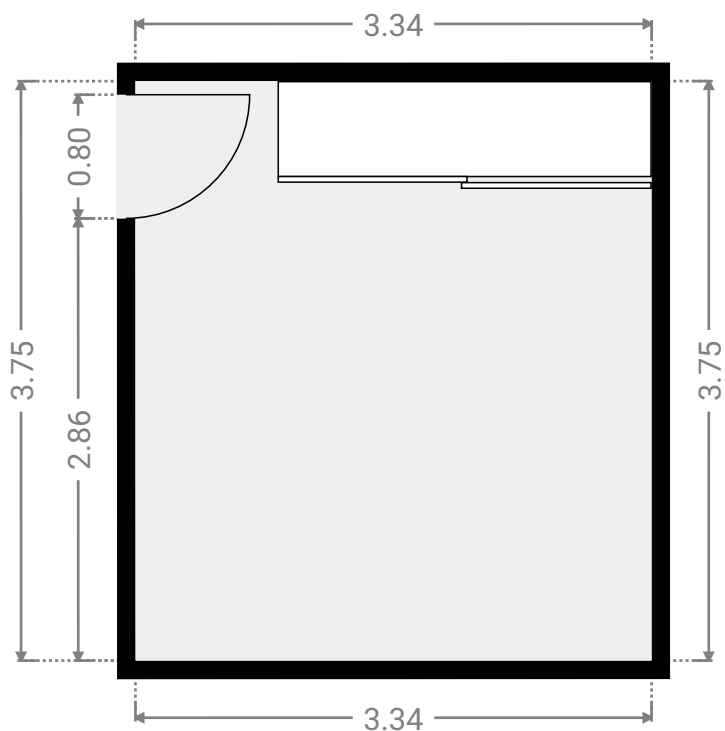
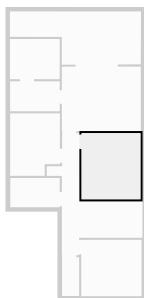
▼ **Bedroom**
1st Floor

WIDTH: 3.42 m • LENGTH: 3.20 m
AREA: 10.95 m² • PERIMETER: 13.24 m



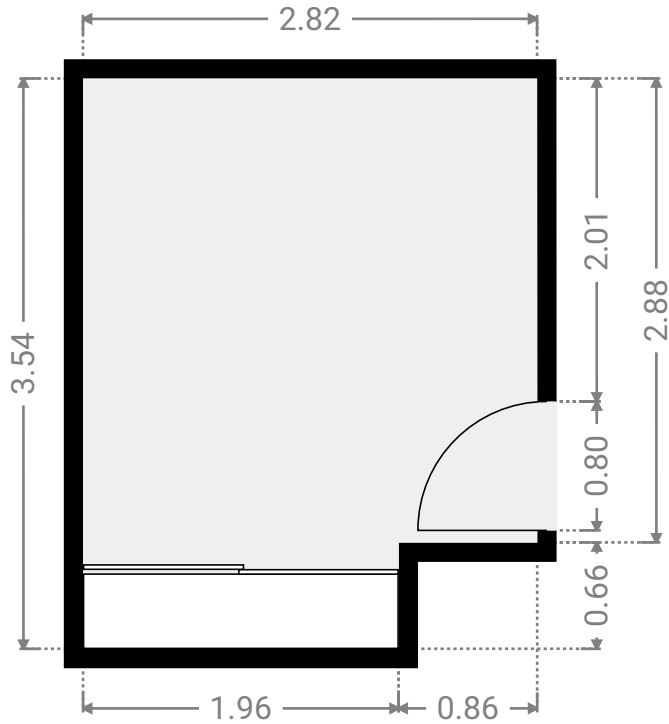
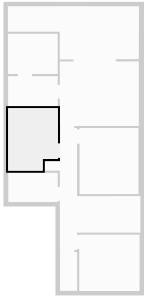
▼ **Bedroom**
1st Floor

WIDTH: 3.34 m • LENGTH: 3.75 m
AREA: 12.53 m² • PERIMETER: 14.18 m



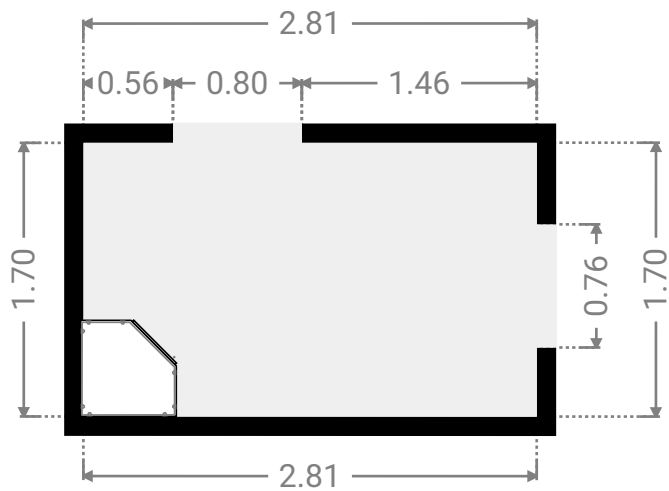
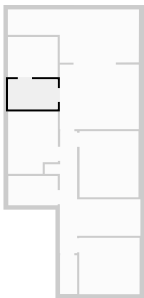
▼ **Bedroom**
1st Floor

WIDTH: 2.82 m • LENGTH: 3.54 m
AREA: 9.41 m² • PERIMETER: 12.72 m



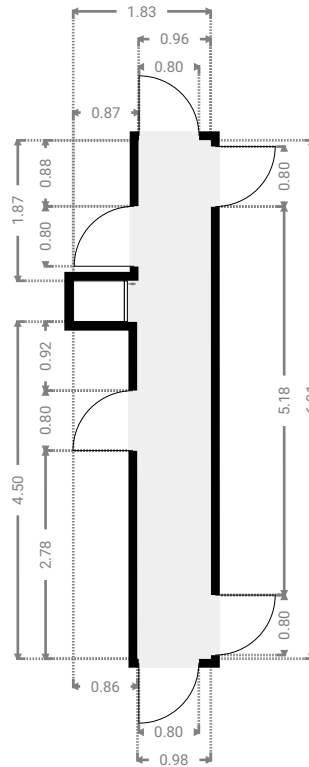
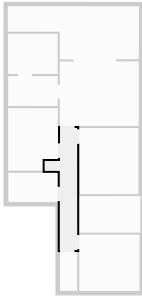
▼ **Closet**
1st Floor

WIDTH: 2.81 m • LENGTH: 1.70 m
AREA: 4.78 m² • PERIMETER: 9.03 m



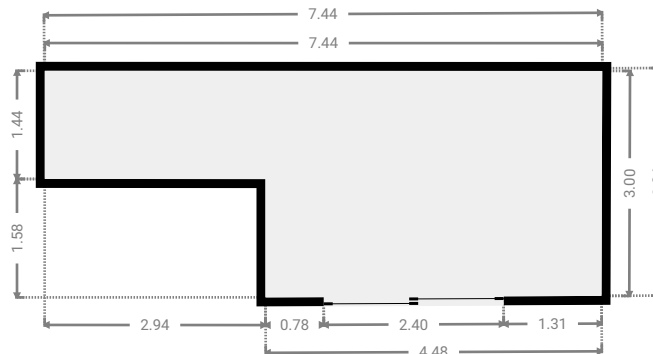
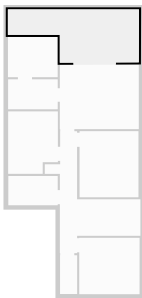
▼ **Hall**
1st Floor

WIDTH: 1.83 m • LENGTH: 6.91 m
AREA: 7.19 m² • PERIMETER: 17.49 m



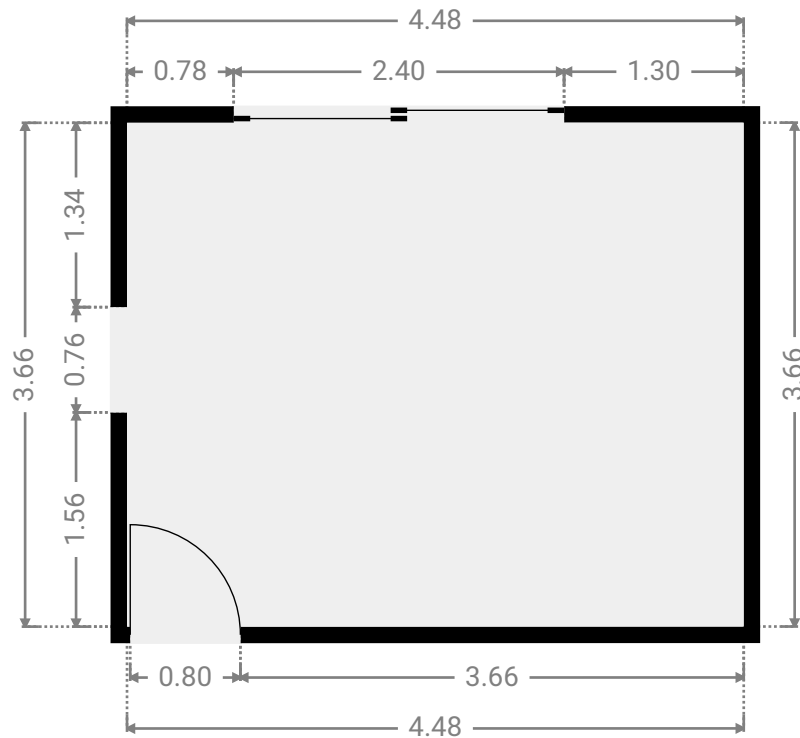
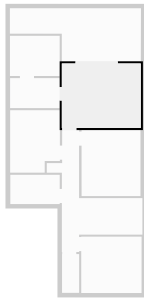
▼ **Other**
1st Floor

WIDTH: 7.44 m • LENGTH: 3.04 m
AREA: 17.76 m² • PERIMETER: 20.88 m



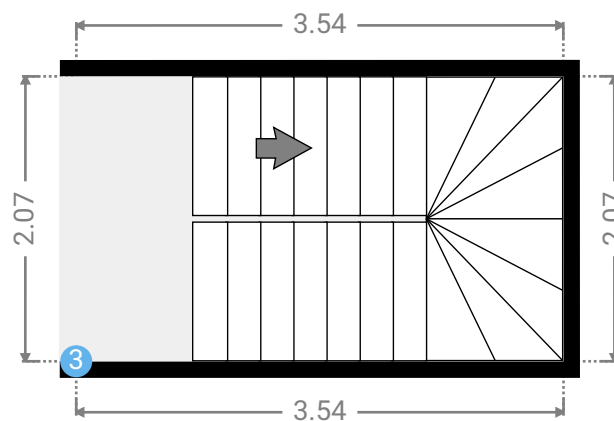
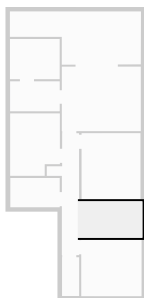
▼ Primary Bedroom 1st Floor

WIDTH: 4.48 m • LENGTH: 3.66 m
AREA: 16.40 m² • PERIMETER: 16.28 m



▼ Stairway 1st Floor

WIDTH: 3.54 m • LENGTH: 2.07 m
AREA: 7.32 m² • PERIMETER: 11.22 m



▼ Stairway/1st Floor

3 OPENING

Height
0.00 m



▼ Toilet
1st Floor

WIDTH: 0.97 m • LENGTH: 2.20 m
AREA: 2.13 m² • PERIMETER: 6.34 m

