

155 Julie Anne Drive

SUBMITTED BY

Ray White Rockhampton Casey
stockers@cqoz.com

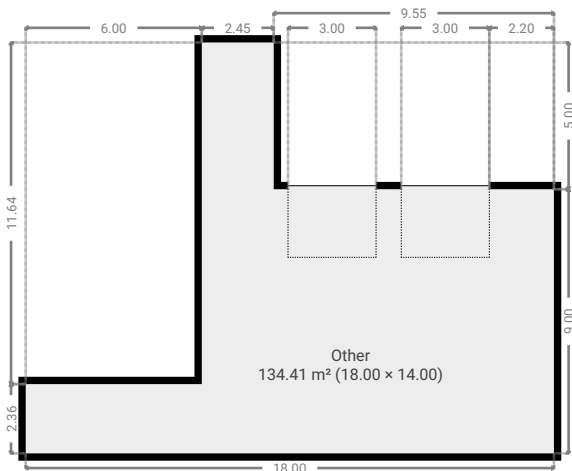
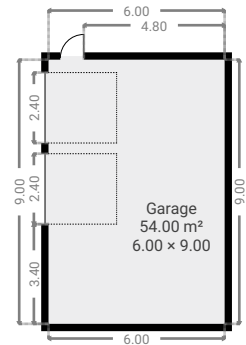
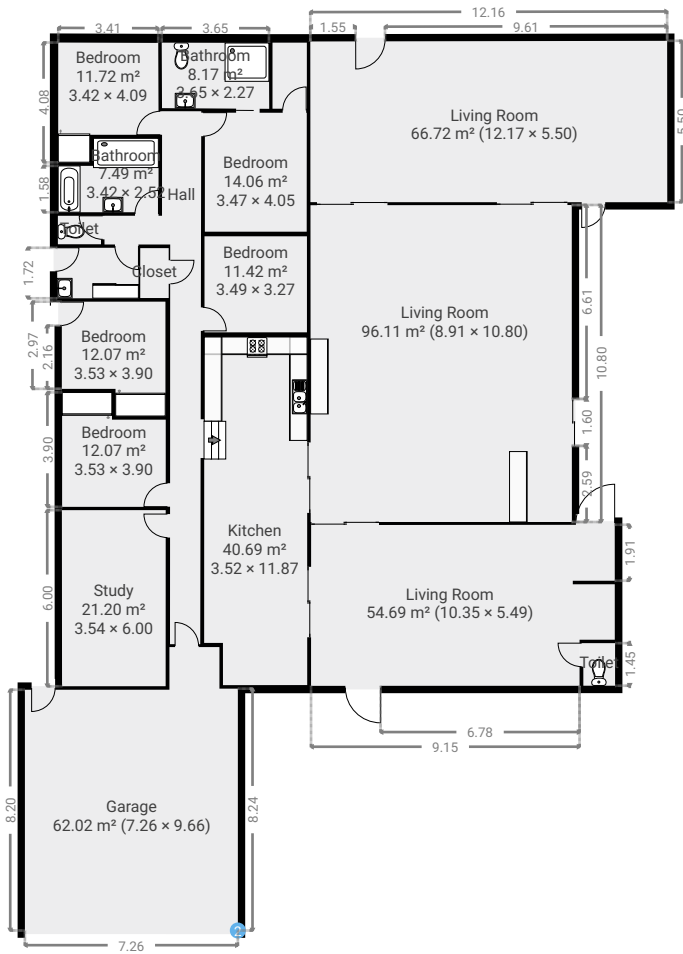
CREATED ON

2022-11-28

Floors

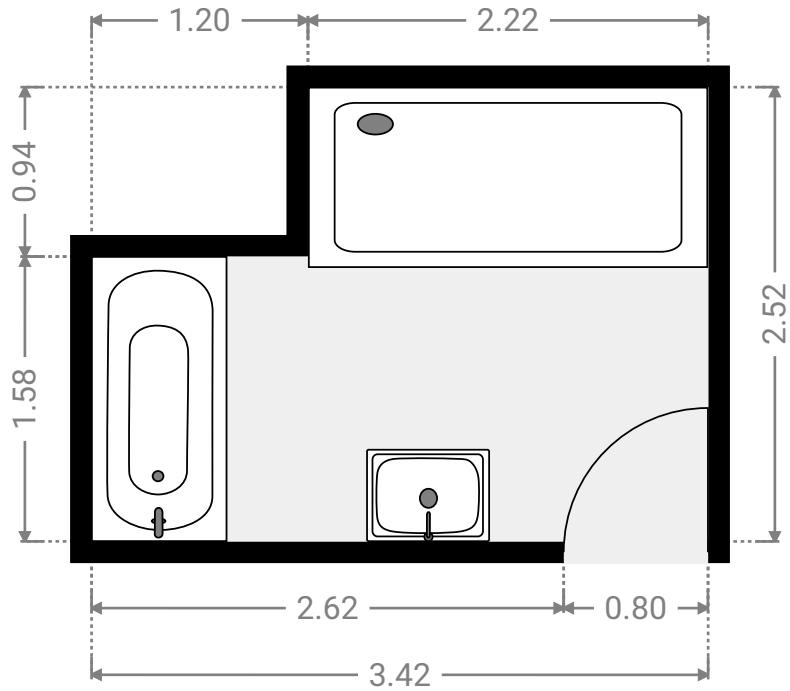
1

▼ Ground Floor



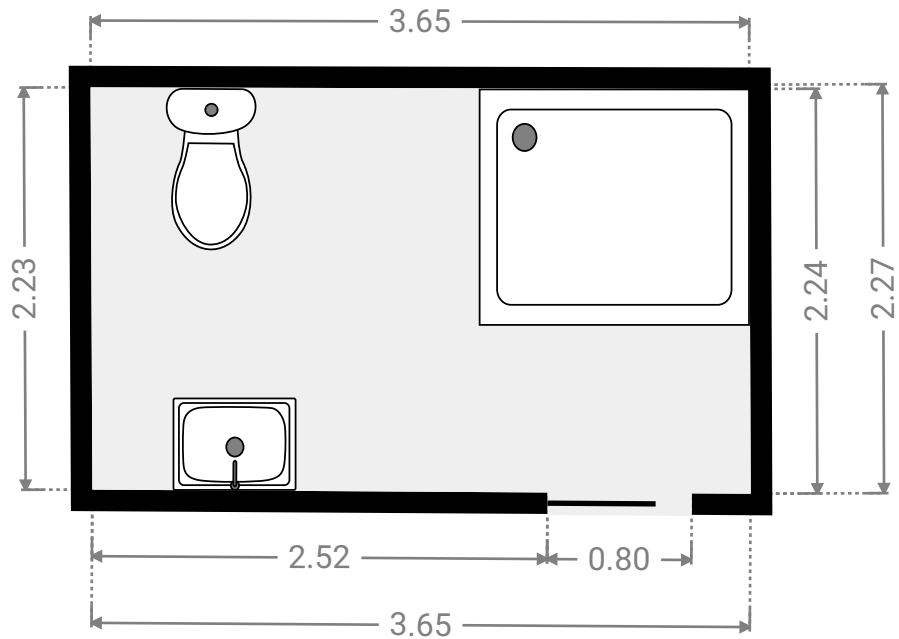
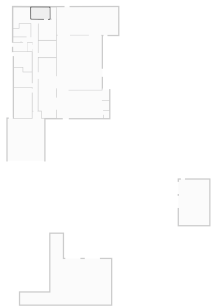
▼ Bathroom
Ground Floor

WIDTH: 3.42 m • LENGTH: 2.52 m
AREA: 7.49 m² • PERIMETER: 11.88 m



▼ Bathroom
Ground Floor

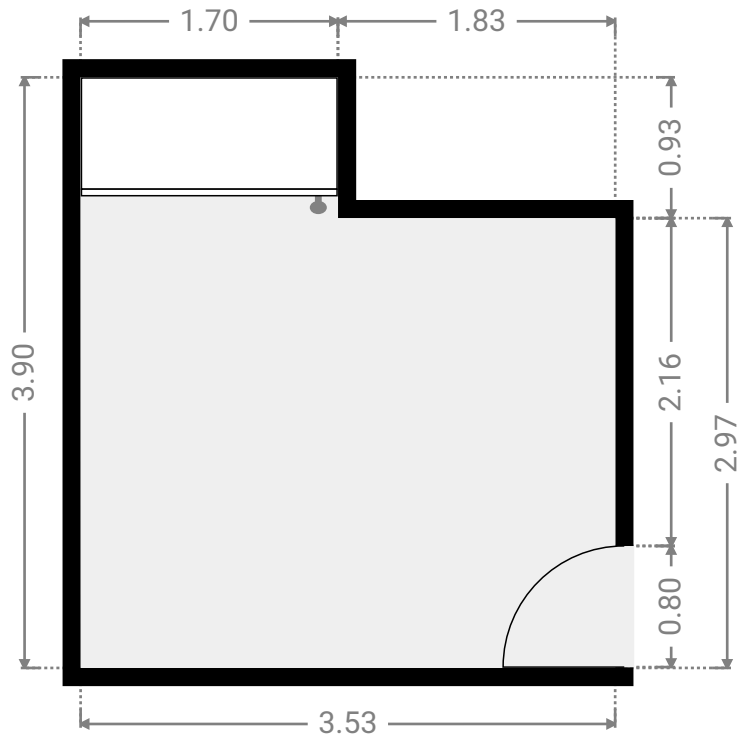
WIDTH: 3.65 m • LENGTH: 2.27 m
AREA: 8.17 m² • PERIMETER: 11.78 m



FLOORS: 1

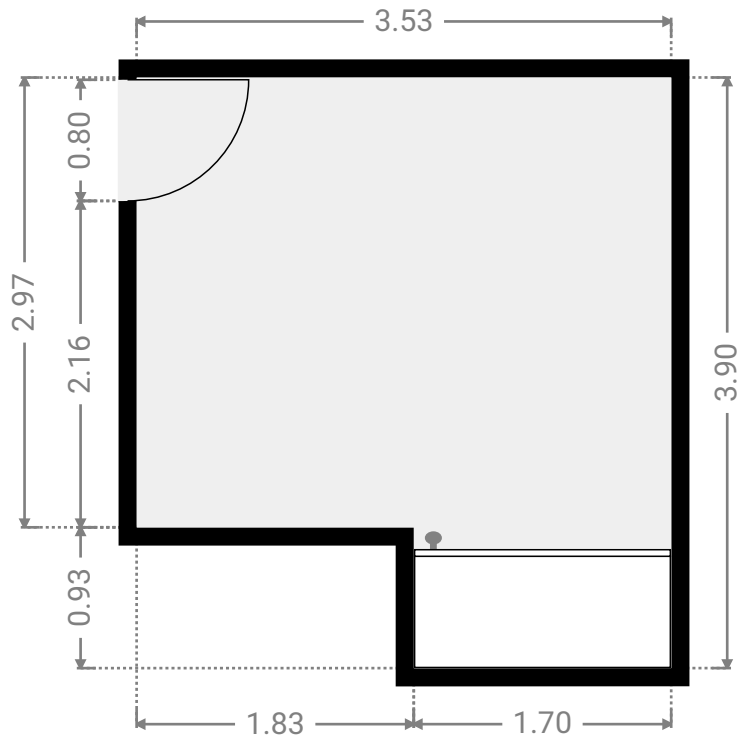
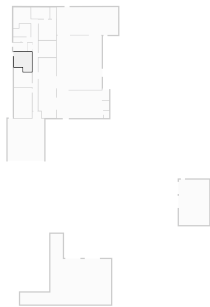
▼ **Bedroom**
Ground Floor

WIDTH: 3.53 m • LENGTH: 3.90 m
AREA: 12.07 m² • PERIMETER: 14.86 m



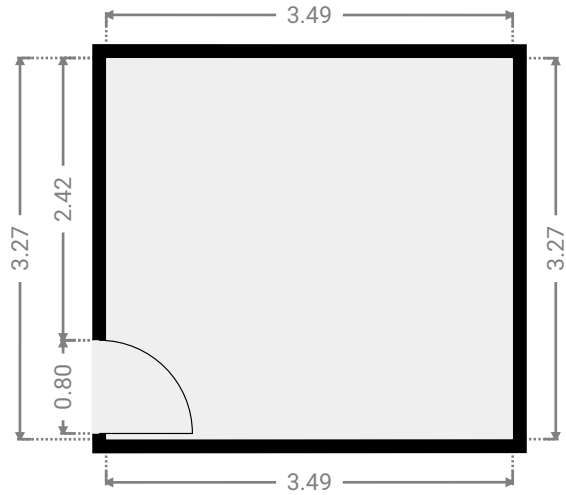
▼ **Bedroom**
Ground Floor

WIDTH: 3.53 m • LENGTH: 3.90 m
AREA: 12.07 m² • PERIMETER: 14.86 m



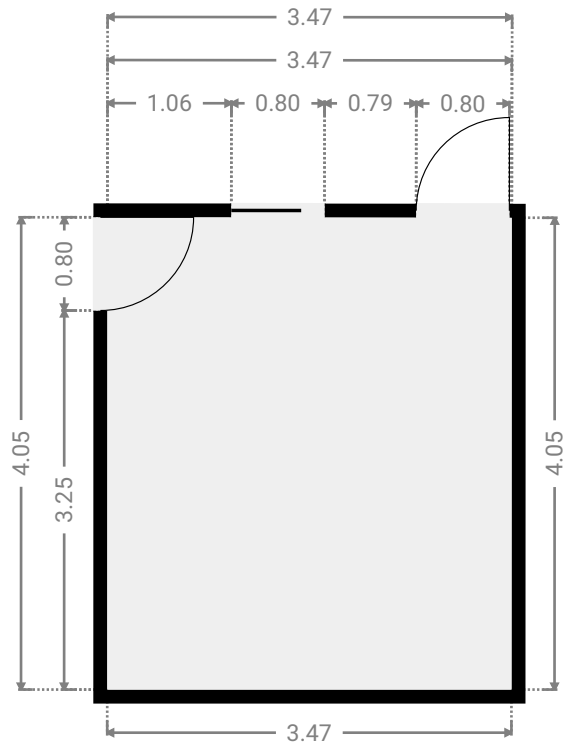
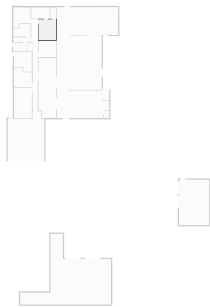
▼ **Bedroom**
Ground Floor

WIDTH: 3.49 m • LENGTH: 3.27 m
AREA: 11.42 m² • PERIMETER: 13.52 m



▼ **Bedroom**
Ground Floor

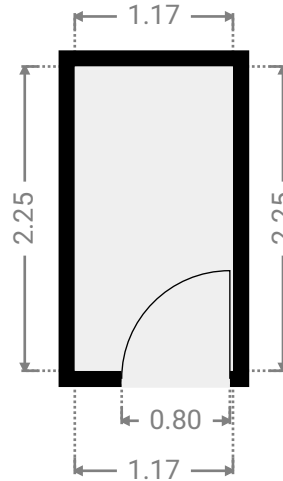
WIDTH: 3.47 m • LENGTH: 4.05 m
AREA: 14.06 m² • PERIMETER: 15.04 m



FLOORS: 1

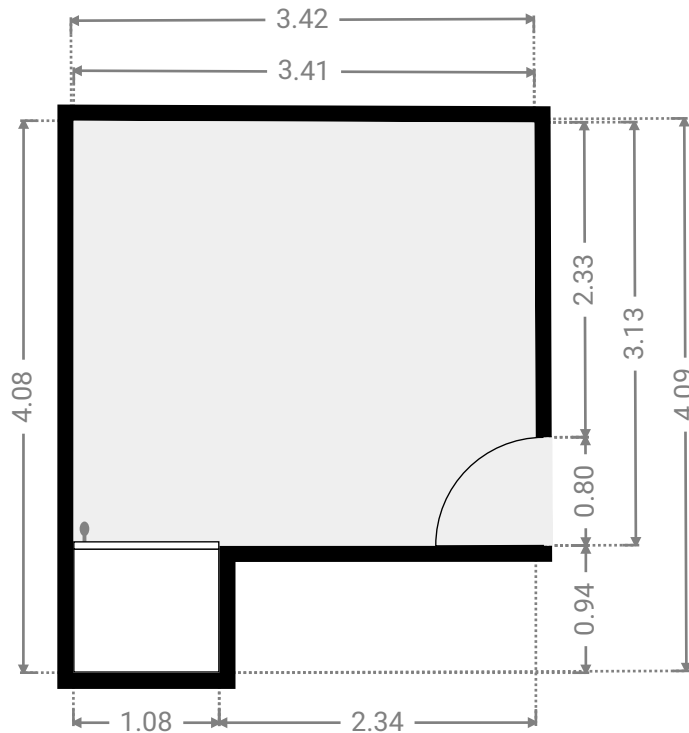
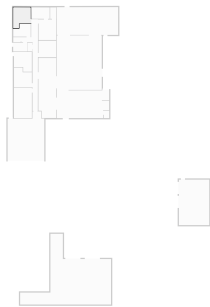
▼ **Closet**
Ground Floor

WIDTH: 1.17 m • LENGTH: 2.25 m
AREA: 2.63 m² • PERIMETER: 6.84 m



▼ **Bedroom**
Ground Floor

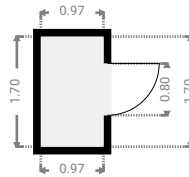
WIDTH: 3.42 m • LENGTH: 4.09 m
AREA: 11.72 m² • PERIMETER: 14.98 m



FLOORS: 1

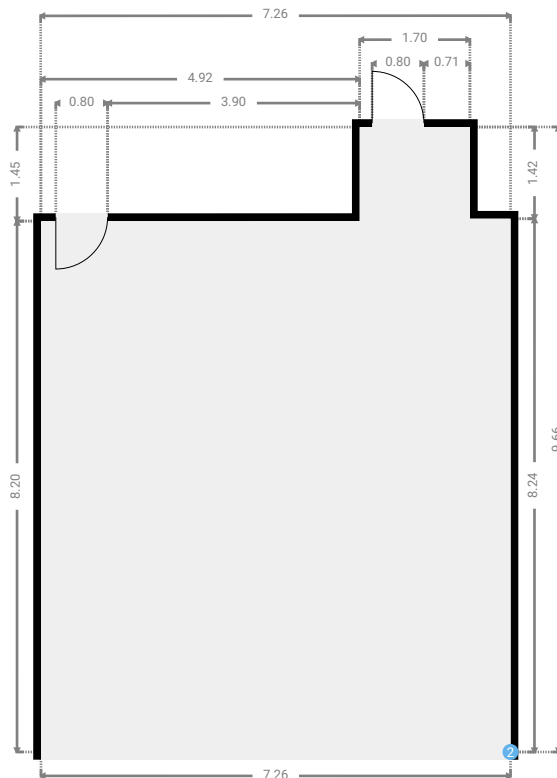
▼ **Closet**
Ground Floor

WIDTH: 0.97 m • LENGTH: 1.70 m
AREA: 1.65 m² • PERIMETER: 5.34 m



▼ **Garage**
Ground Floor

WIDTH: 7.26 m • LENGTH: 9.66 m
AREA: 62.02 m² • PERIMETER: 33.82 m



▼ Garage/Ground Floor

2 OPENING

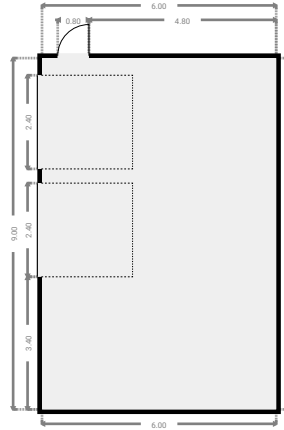
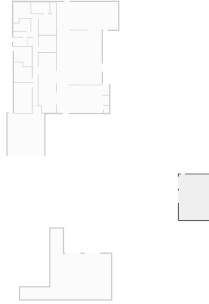
Height
0.00 m



FLOORS: 1

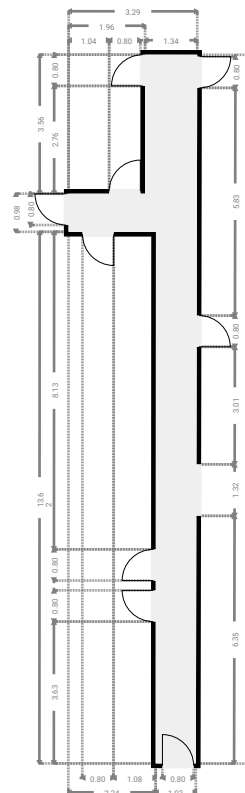
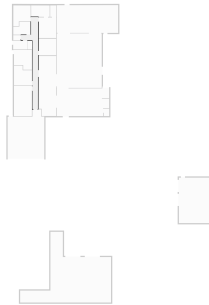
▼ Garage
Ground Floor

WIDTH: 6.00 m • LENGTH: 9.00 m
AREA: 54.00 m² • PERIMETER: 30.00 m



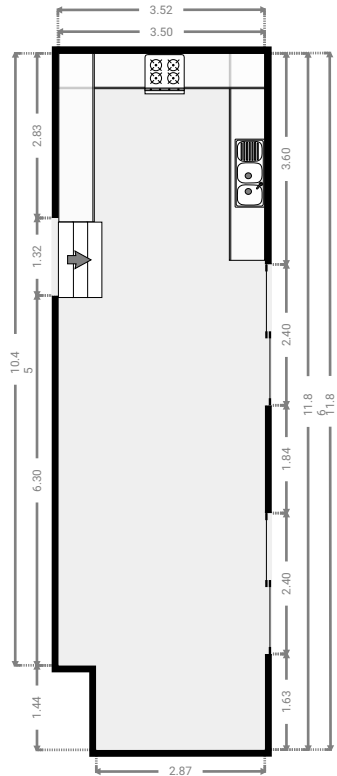
▼ Hall
Ground Floor

WIDTH: 3.29 m • LENGTH: 18.16 m
AREA: 22.12 m² • PERIMETER: 42.88 m



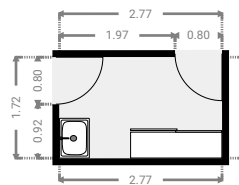
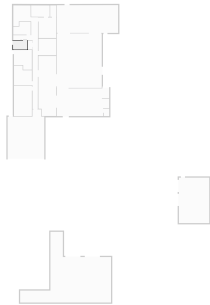
▼ Kitchen
Ground Floor

WIDTH: 3.52 m • LENGTH: 11.87 m
AREA: 40.69 m² • PERIMETER: 30.74 m



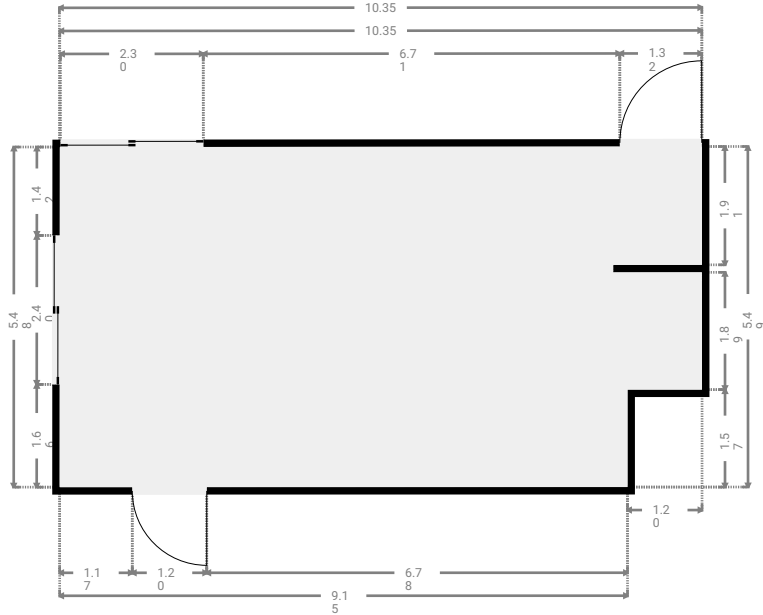
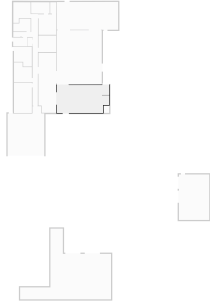
▼ Laundry Room
Ground Floor

WIDTH: 2.77 m • LENGTH: 1.72 m
AREA: 4.76 m² • PERIMETER: 8.98 m



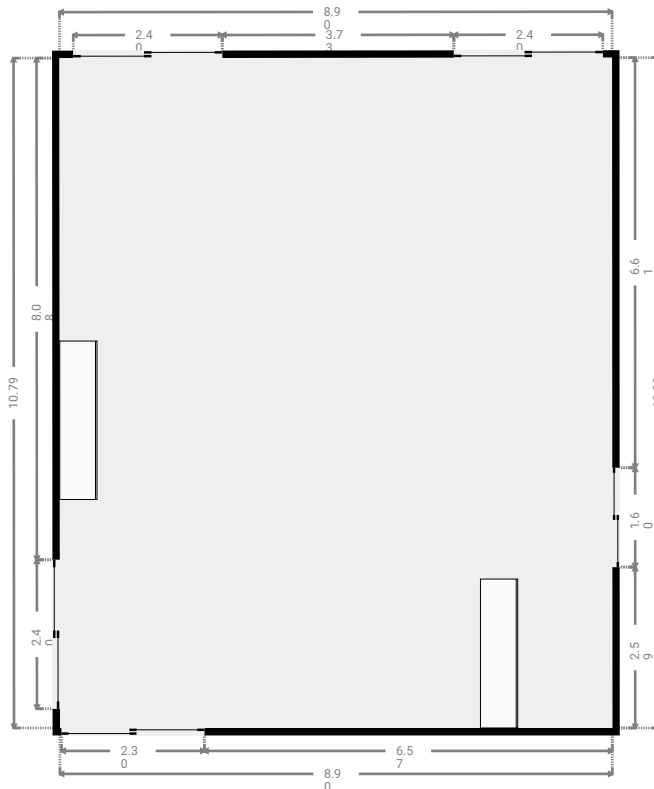
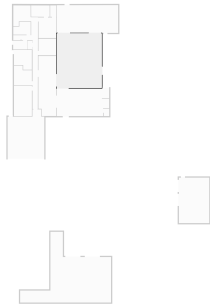
▼ Living Room
Ground Floor

WIDTH: 10.35 m • LENGTH: 5.49 m
AREA: 54.69 m² • PERIMETER: 34.52 m



▼ Living Room
Ground Floor

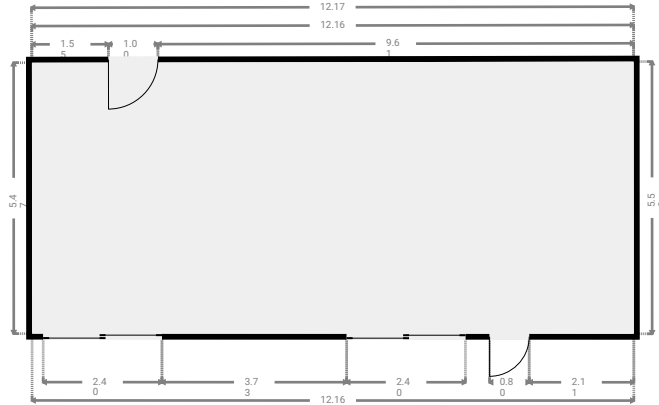
WIDTH: 8.91 m • LENGTH: 10.80 m
AREA: 96.11 m² • PERIMETER: 39.40 m



FLOORS: 1

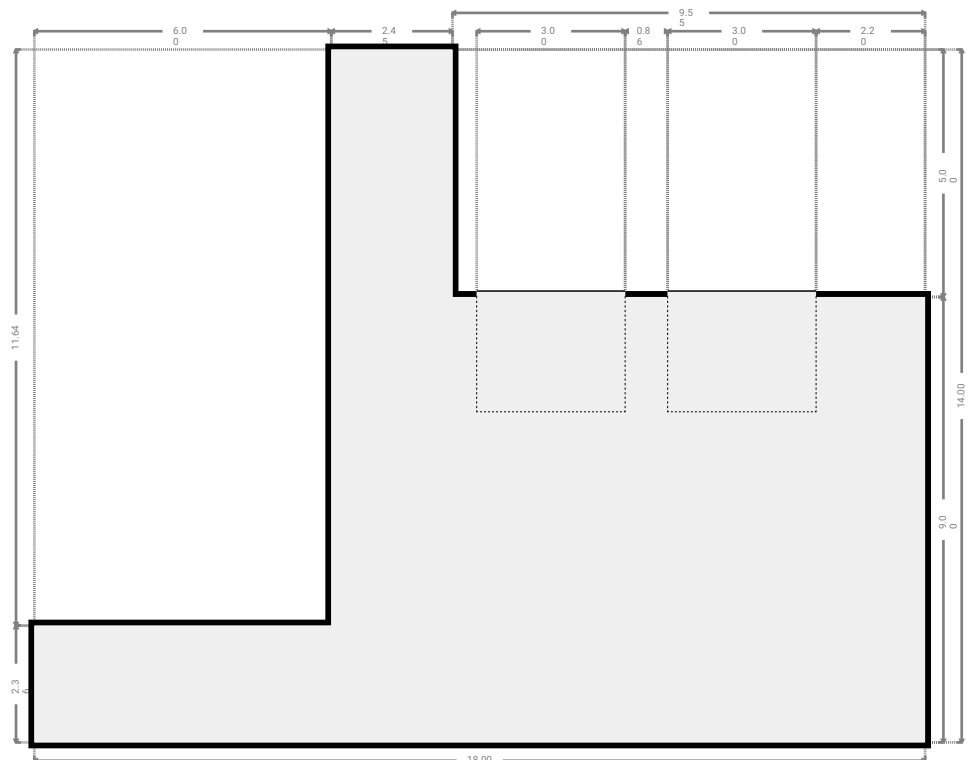
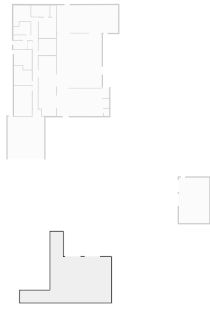
▼ Living Room
Ground Floor

WIDTH: 12.17 m • LENGTH: 5.50 m
AREA: 66.72 m² • PERIMETER: 35.29 m



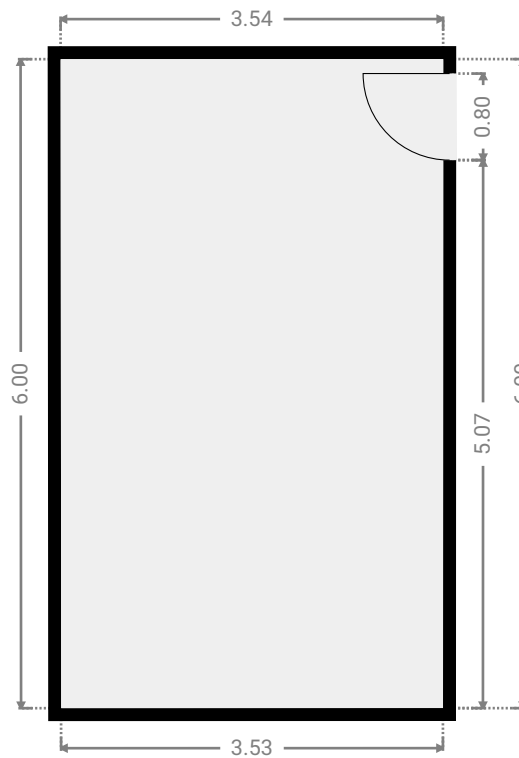
▼ Other
Ground Floor

WIDTH: 18.00 m • LENGTH: 14.00 m
AREA: 134.41 m² • PERIMETER: 64.00 m



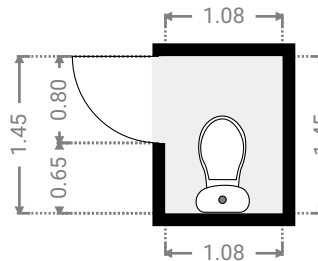
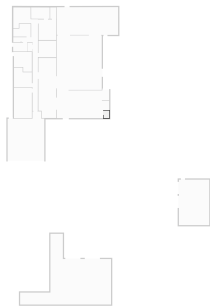
▼ **Study**
Ground Floor

WIDTH: 3.54 m • LENGTH: 6.00 m
AREA: 21.20 m² • PERIMETER: 19.07 m



▼ **Toilet**
Ground Floor

WIDTH: 1.08 m • LENGTH: 1.45 m
AREA: 1.57 m² • PERIMETER: 5.06 m



▼ Toilet
Ground Floor

WIDTH: 1.47 m • LENGTH: 0.97 m
AREA: 1.43 m² • PERIMETER: 4.88 m

