

150 Cruikshank Street

SUBMITTED BY

Ray White Rockhampton Casey
stockers@cqoz.com

CREATED ON

2022-10-11

Floors

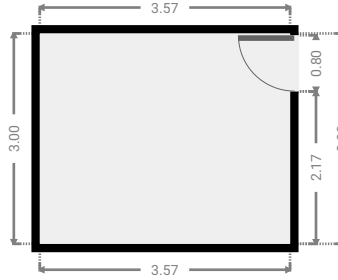
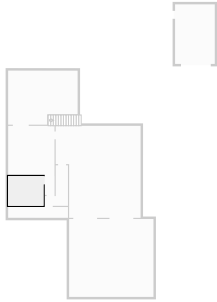
2

▼ Ground Floor



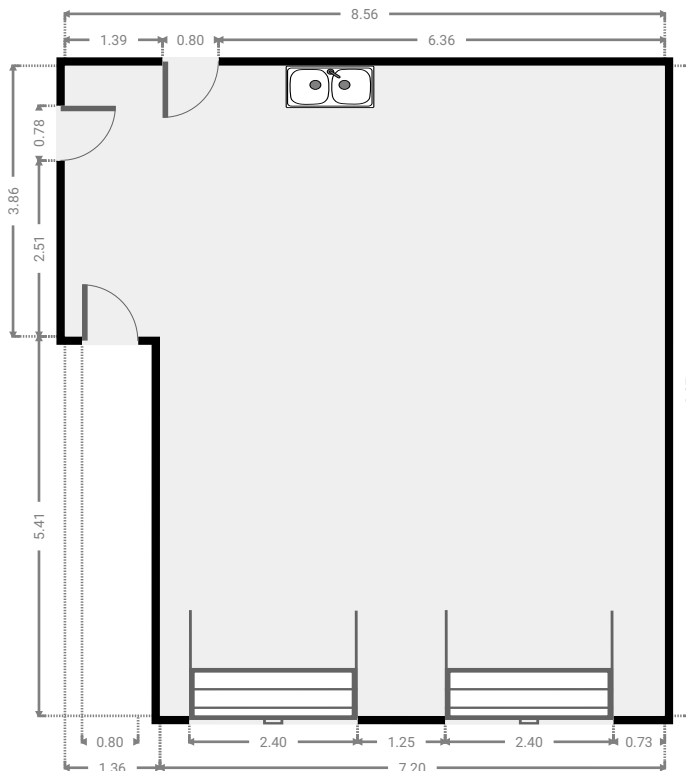
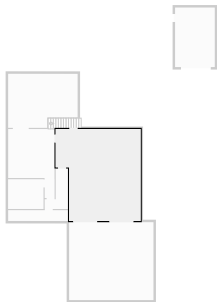
▼ **Bedroom**
Ground Floor

WIDTH: 3.57 m • LENGTH: 3.00 m
AREA: 10.71 m² • PERIMETER: 13.14 m



▼ **Garage**
Ground Floor

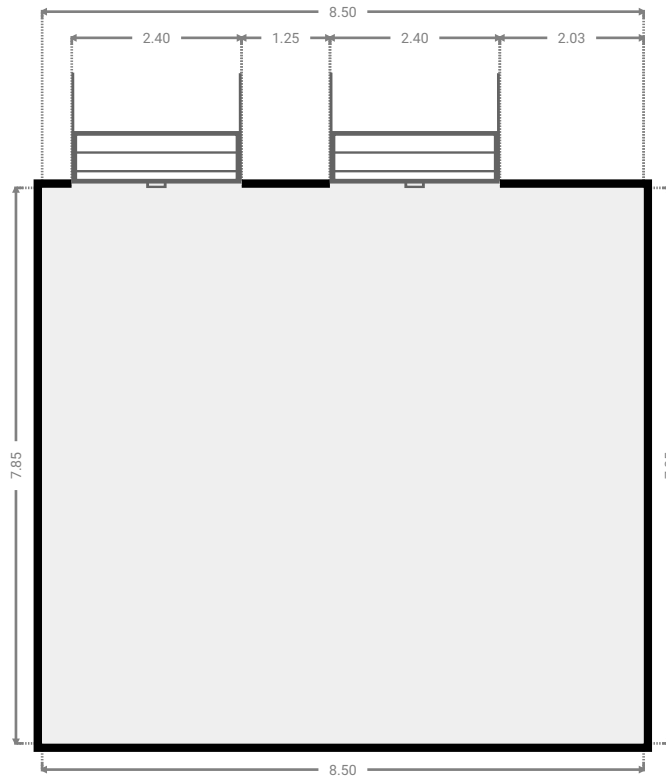
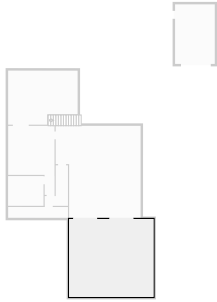
WIDTH: 8.56 m • LENGTH: 9.27 m
AREA: 72.00 m² • PERIMETER: 35.66 m



FLOORS: 2

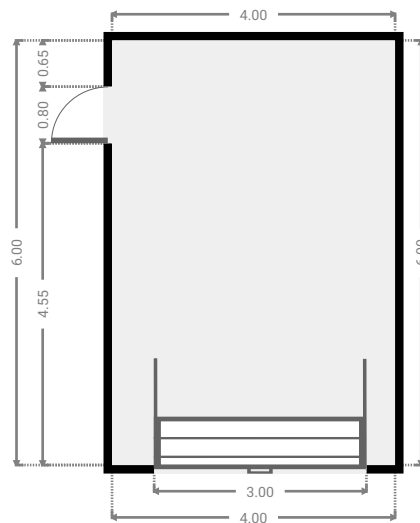
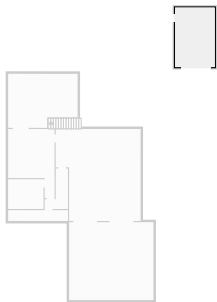
▼ Garage
Ground Floor

WIDTH: 8.50 m • LENGTH: 7.85 m
AREA: 66.72 m² • PERIMETER: 32.70 m



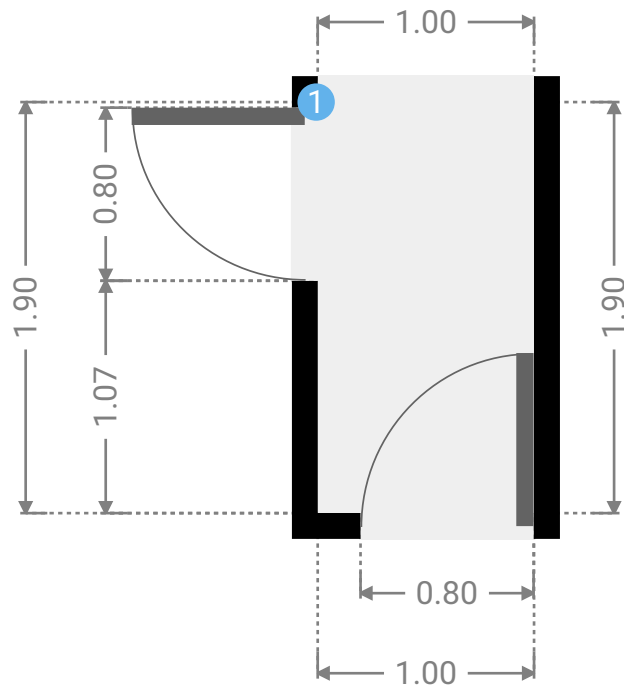
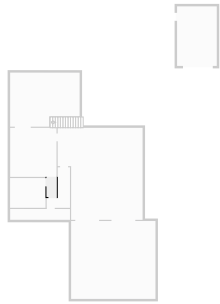
▼ Garage
Ground Floor

WIDTH: 4.00 m • LENGTH: 6.00 m
AREA: 24.00 m² • PERIMETER: 20.00 m



▼ **Hall**
Ground Floor

WIDTH: 1.00 m • LENGTH: 1.90 m
AREA: 1.90 m² • PERIMETER: 5.80 m



▼ **Hall/Ground Floor**

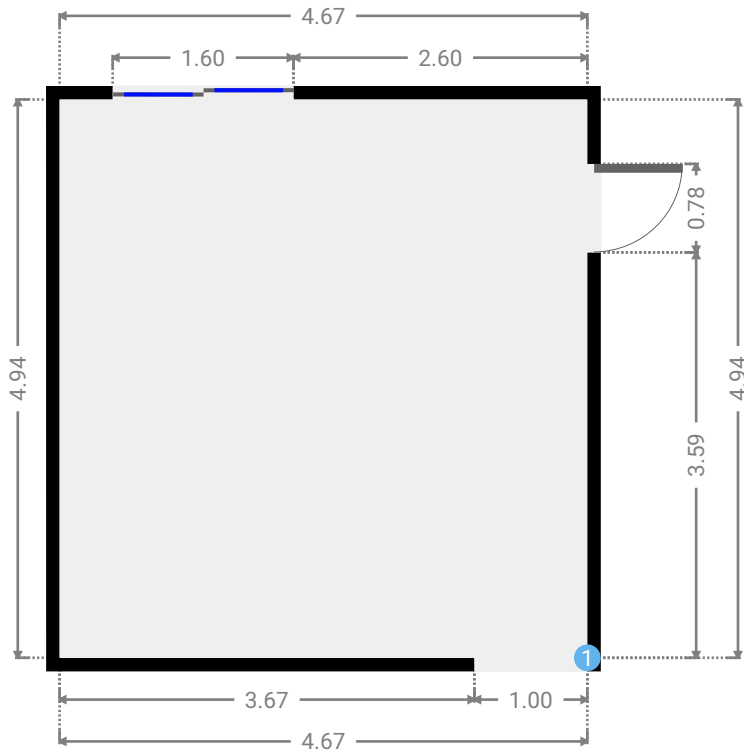
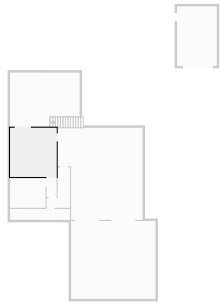
1 OPENING

Height
0.00 m



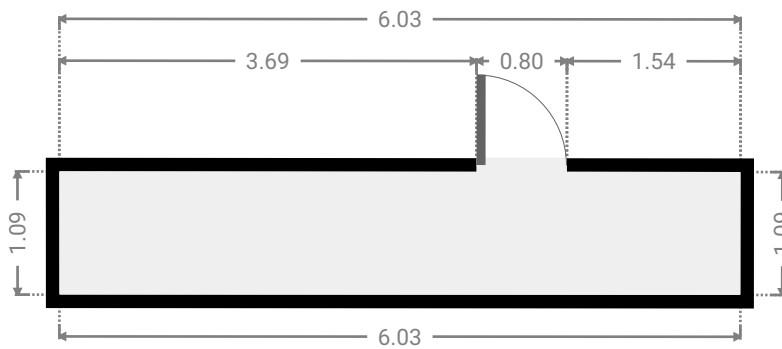
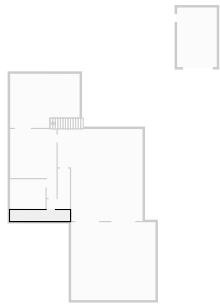
▼ Living Room
Ground Floor

WIDTH: 4.67 m • LENGTH: 4.94 m
AREA: 23.07 m² • PERIMETER: 19.22 m



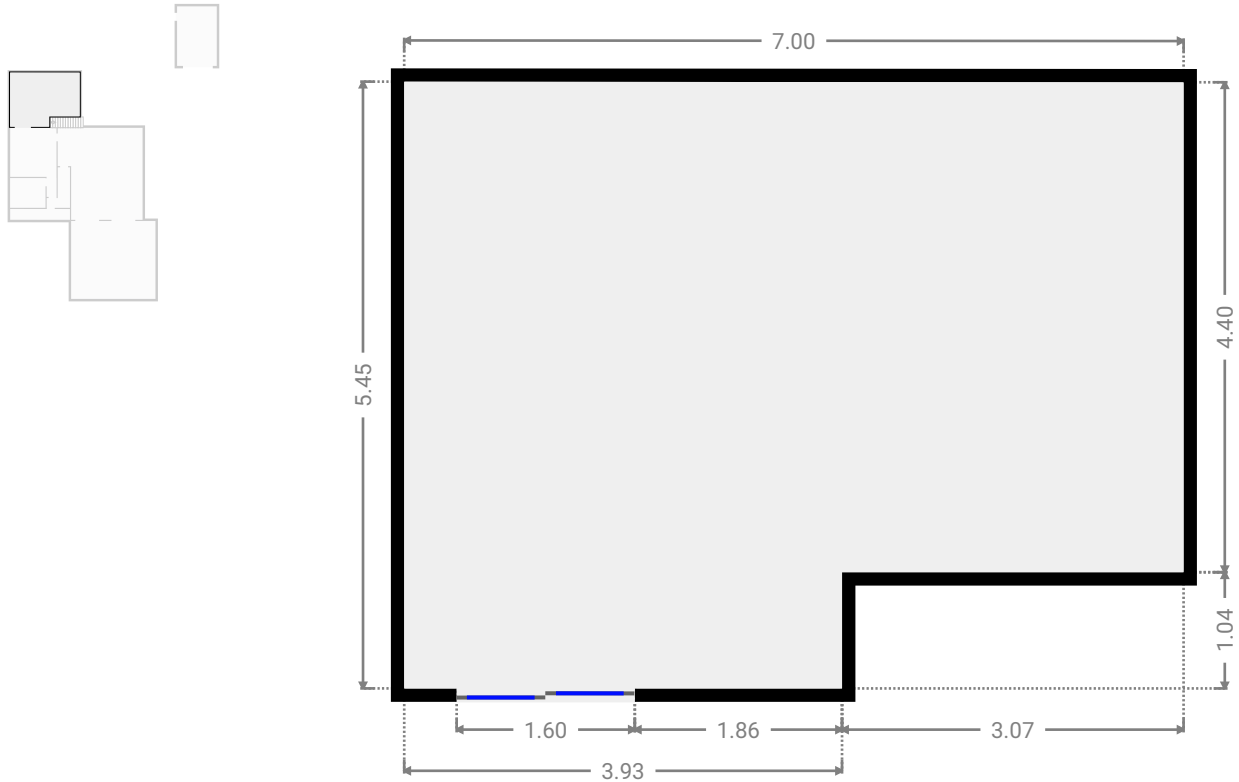
▼ Other
Ground Floor

WIDTH: 6.03 m • LENGTH: 1.09 m
AREA: 6.56 m² • PERIMETER: 14.23 m



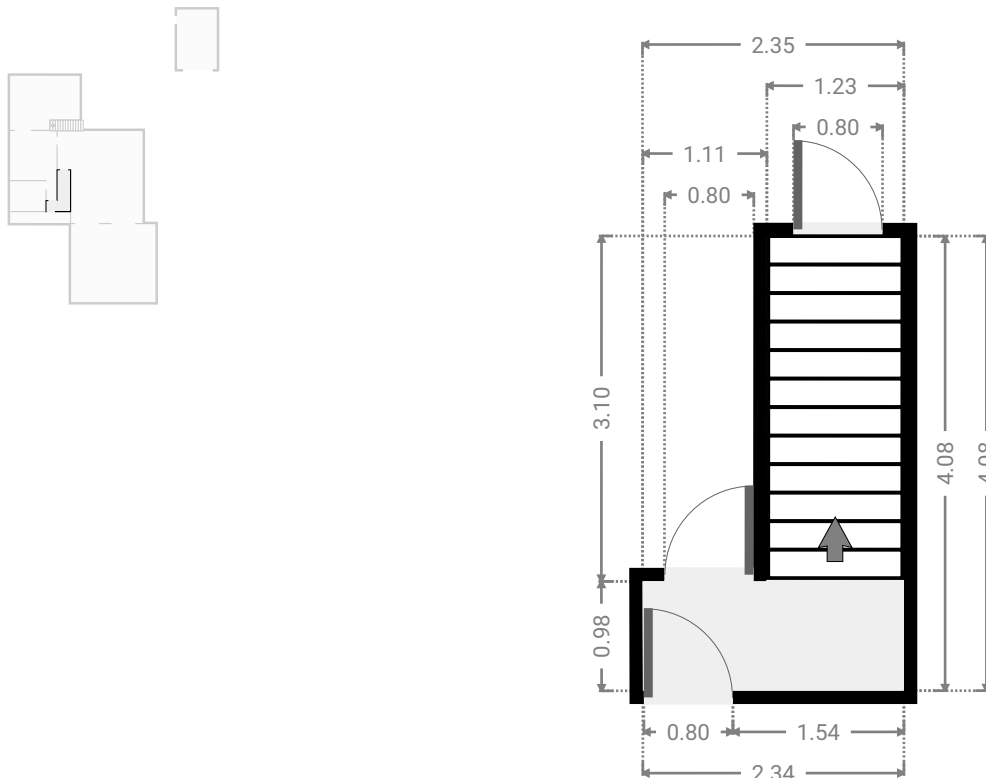
▼ **Other**
Ground Floor

WIDTH: 7.00 m • LENGTH: 5.45 m
AREA: 34.92 m² • PERIMETER: 24.89 m

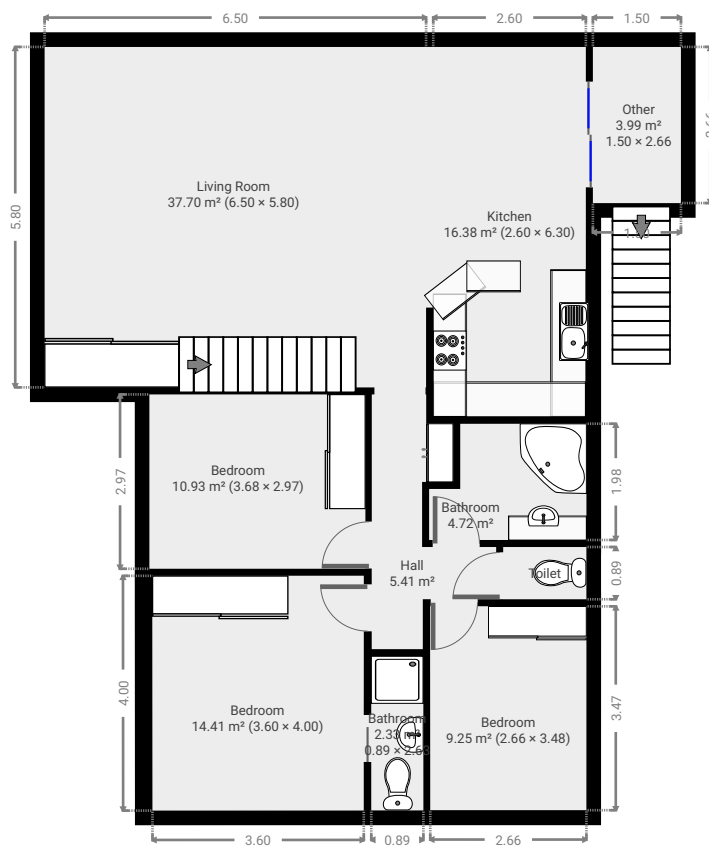


▼ **Stairway**
Ground Floor

WIDTH: 2.35 m • LENGTH: 4.08 m
AREA: 6.13 m² • PERIMETER: 12.86 m

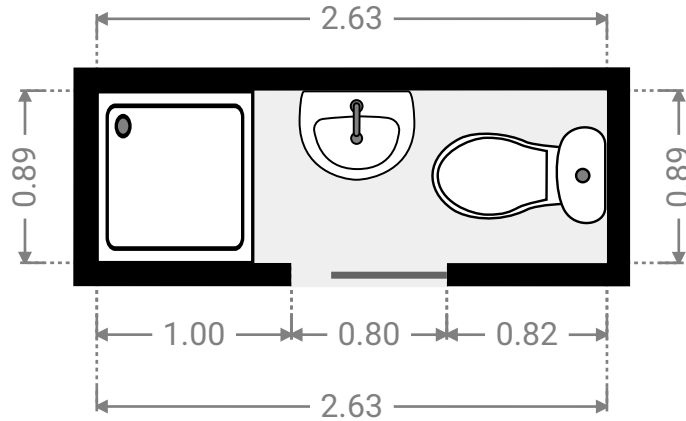
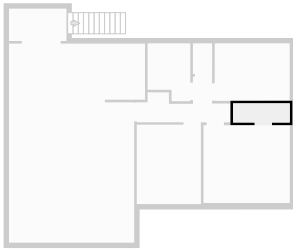


▼ 1st Floor



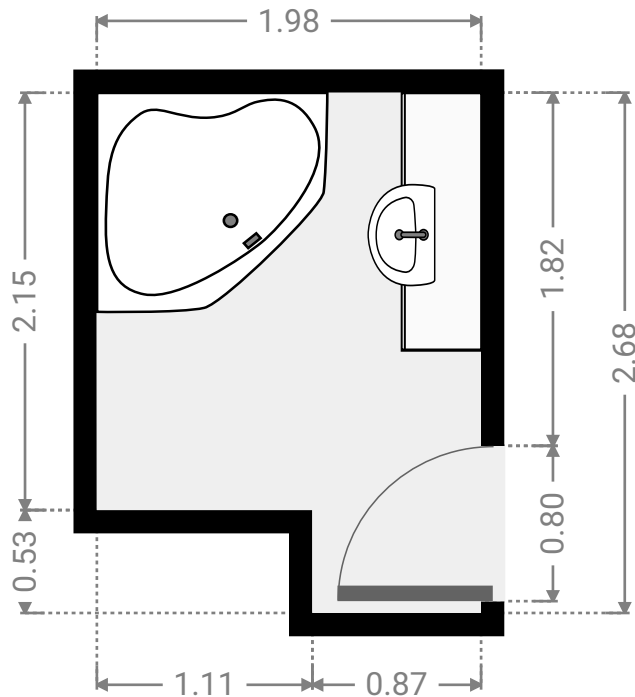
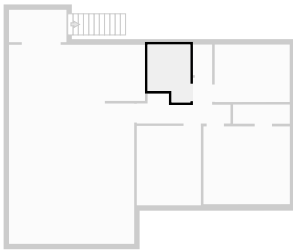
▼ **Bathroom**
1st Floor

WIDTH: 2.63 m • LENGTH: 0.89 m
AREA: 2.33 m² • PERIMETER: 7.03 m



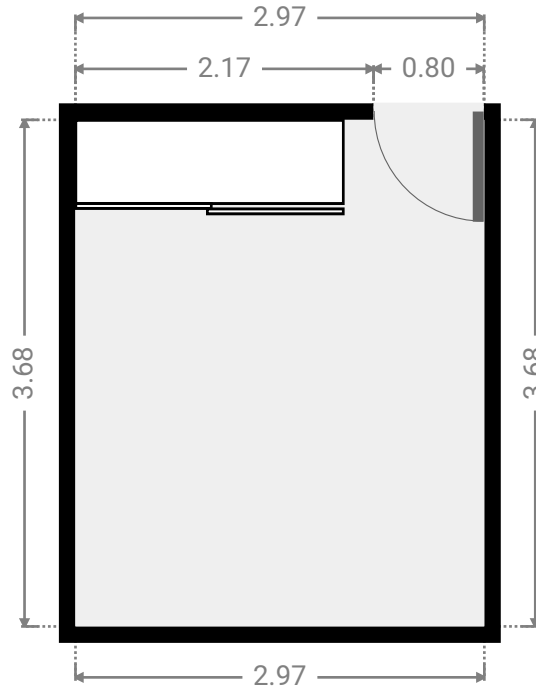
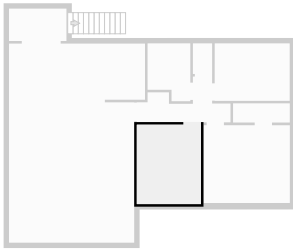
▼ **Bathroom**
1st Floor

WIDTH: 1.98 m • LENGTH: 2.68 m
AREA: 4.72 m² • PERIMETER: 9.32 m



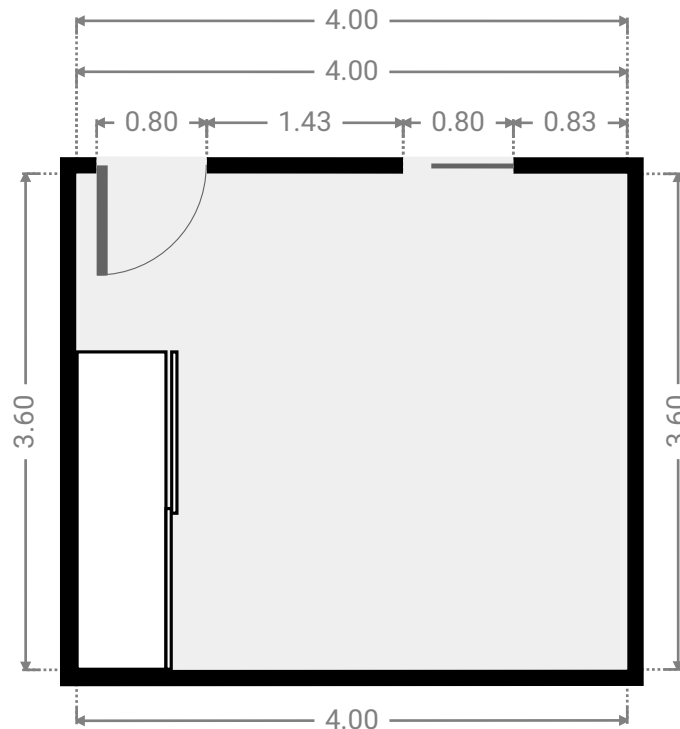
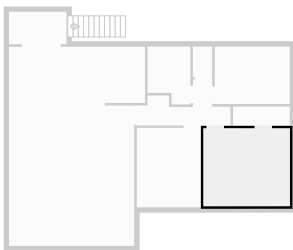
▼ **Bedroom**
1st Floor

WIDTH: 2.97 m • LENGTH: 3.68 m
AREA: 10.93 m² • PERIMETER: 13.30 m



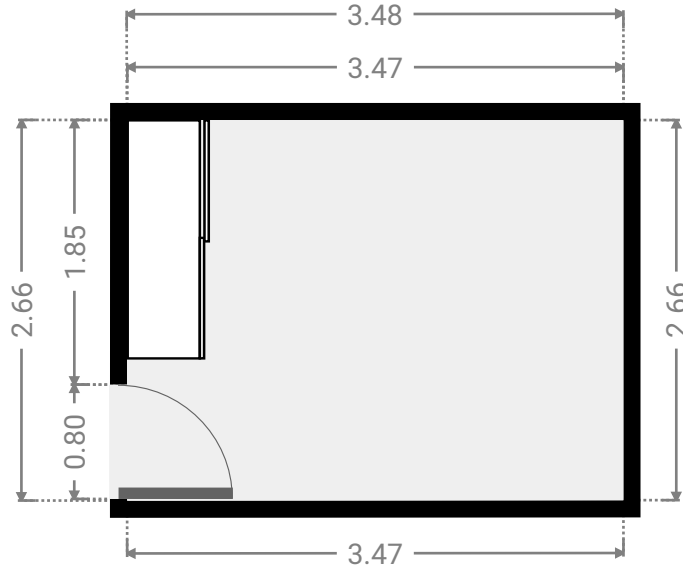
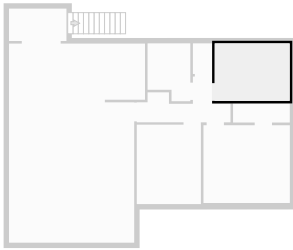
▼ **Bedroom**
1st Floor

WIDTH: 4.00 m • LENGTH: 3.60 m
AREA: 14.41 m² • PERIMETER: 15.20 m



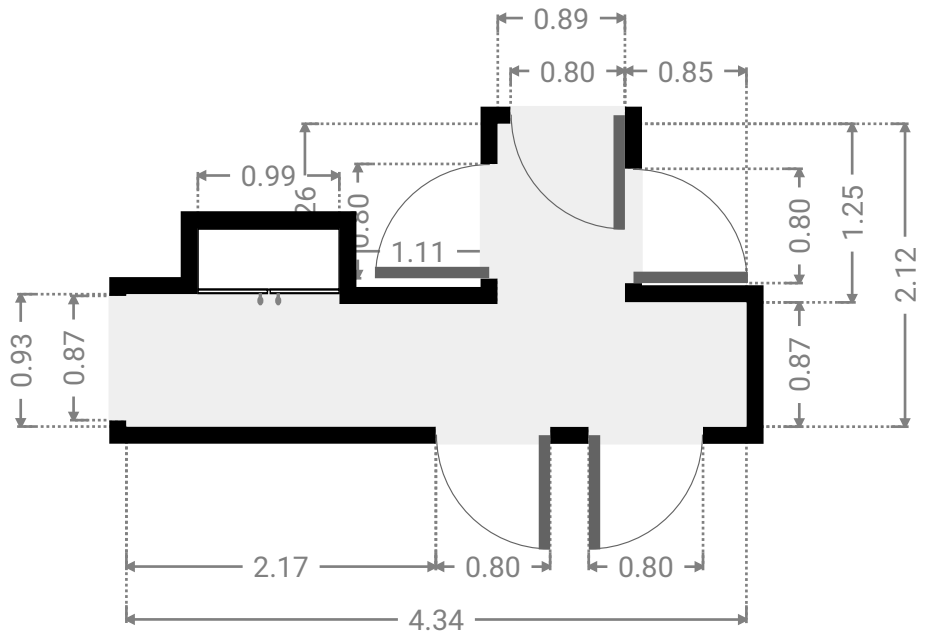
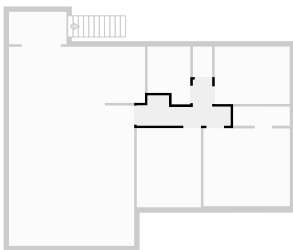
▼ **Bedroom**
1st Floor

WIDTH: 3.48 m • LENGTH: 2.66 m
AREA: 9.25 m² • PERIMETER: 12.27 m



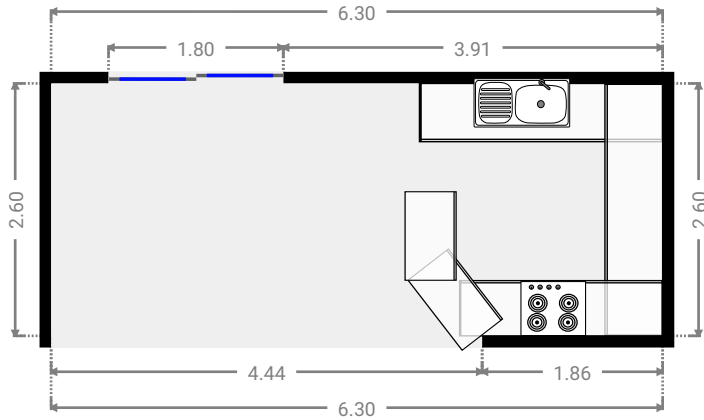
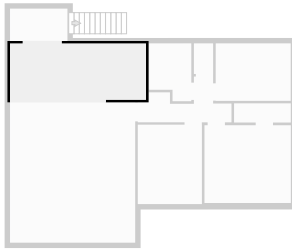
▼ **Hall**
1st Floor

WIDTH: 4.34 m • LENGTH: 2.12 m
AREA: 5.41 m² • PERIMETER: 13.98 m



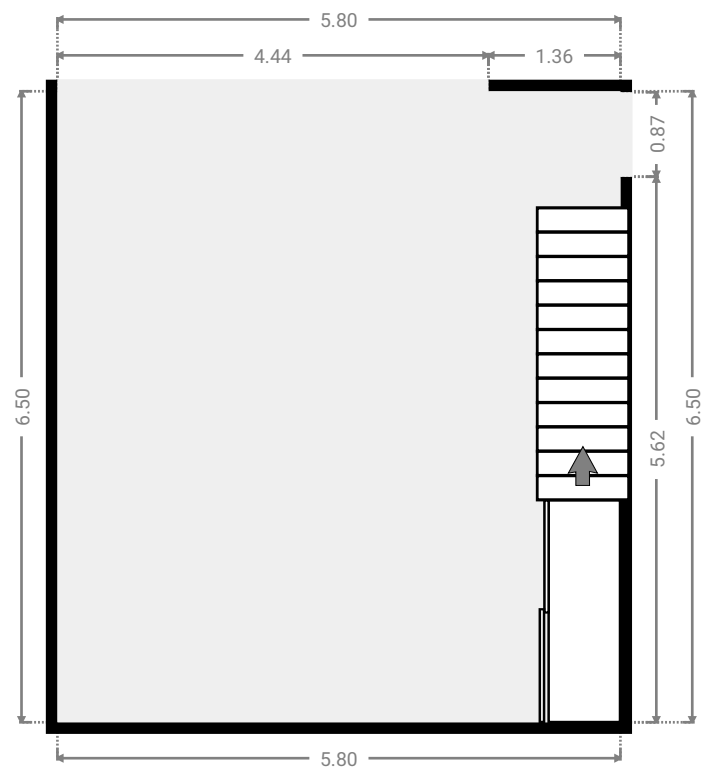
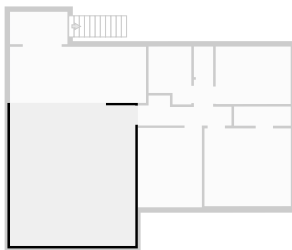
▼ **Kitchen**
1st Floor

WIDTH: 6.30 m • LENGTH: 2.60 m
AREA: 16.38 m² • PERIMETER: 17.80 m



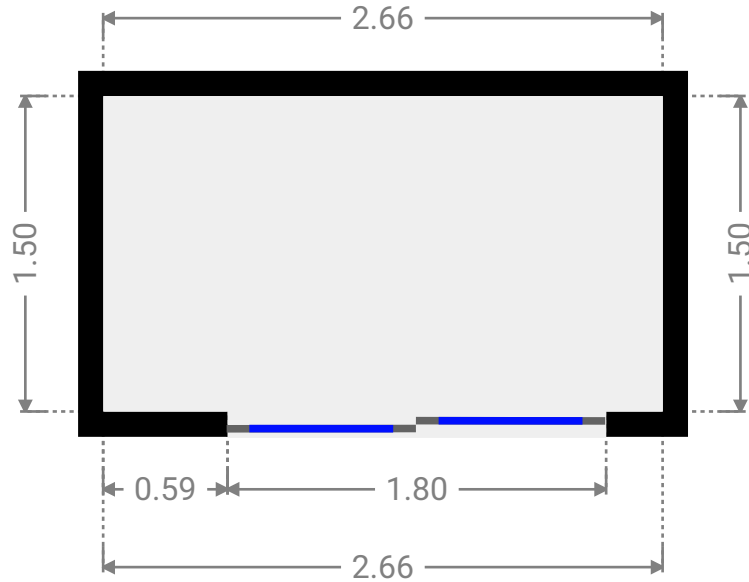
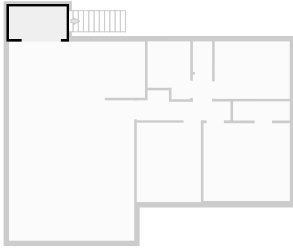
▼ **Living Room**
1st Floor

WIDTH: 5.80 m • LENGTH: 6.50 m
AREA: 37.70 m² • PERIMETER: 24.60 m



▼ **Other**
1st Floor

WIDTH: 2.66 m • LENGTH: 1.50 m
AREA: 3.99 m² • PERIMETER: 8.32 m



▼ **Toilet**
1st Floor

WIDTH: 0.89 m • LENGTH: 1.42 m
AREA: 1.26 m² • PERIMETER: 4.62 m

