

# 15 Triton Close

**SUBMITTED BY**

Ray White Rockhampton Casey  
stockers@cqoz.com

---

**CREATED ON**

2022-10-12

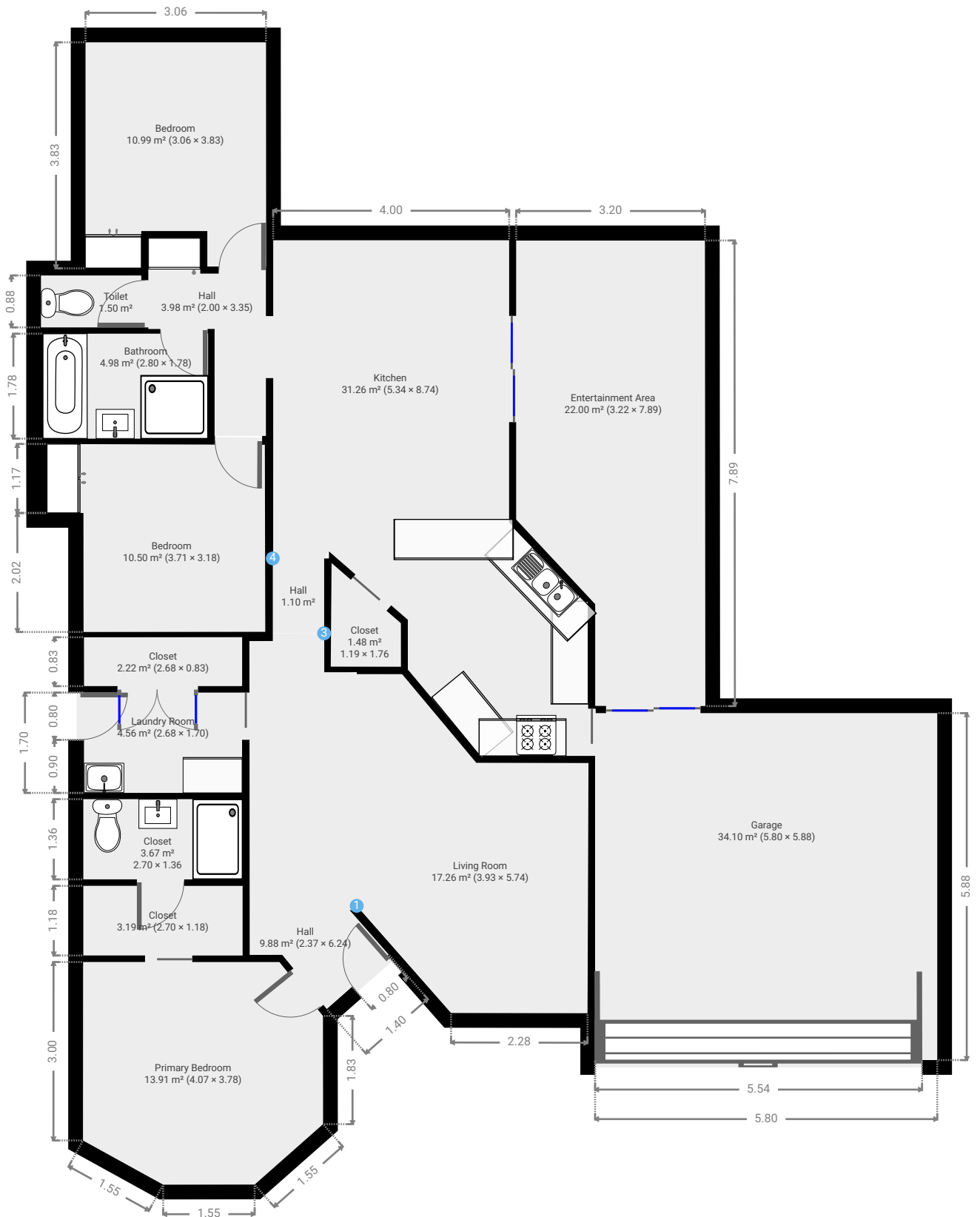
---

**Floors**

1

---

## ▼ Ground Floor

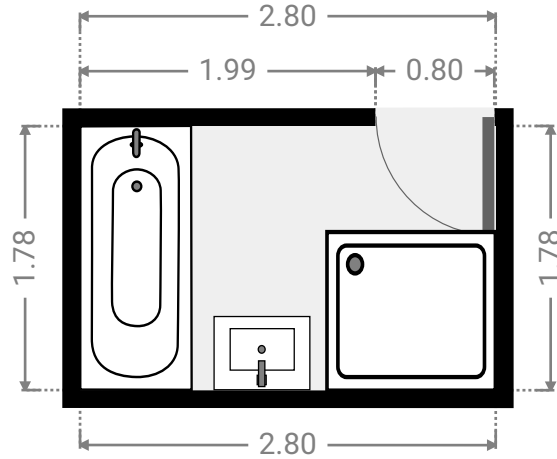
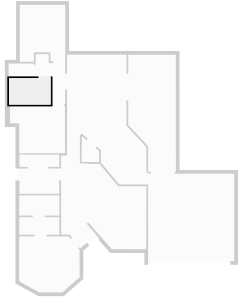


# 15 Triton Close

FLOORS: 1

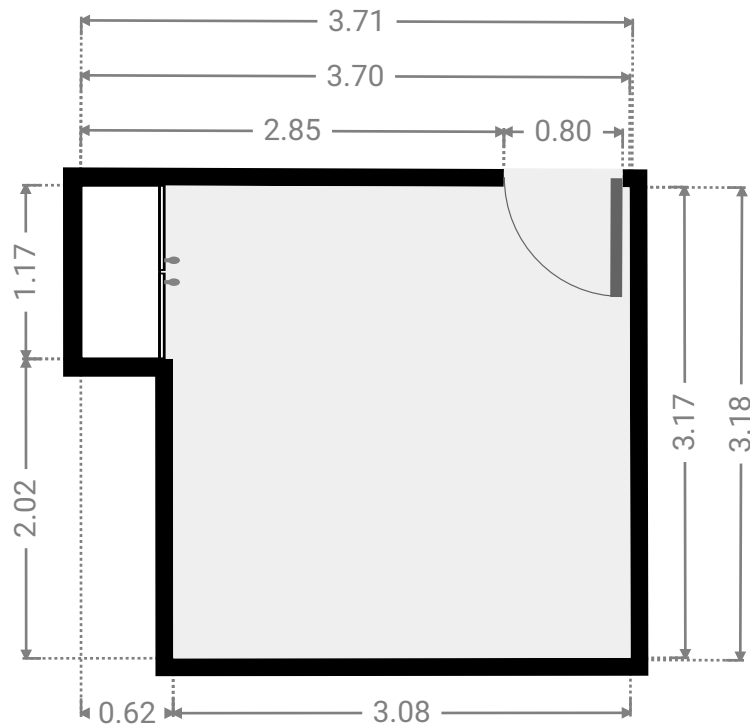
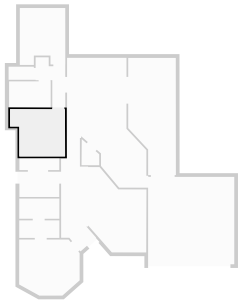
## ▼ Bathroom Ground Floor

WIDTH: 2.80 m • LENGTH: 1.78 m  
AREA: 4.98 m<sup>2</sup> • PERIMETER: 9.16 m



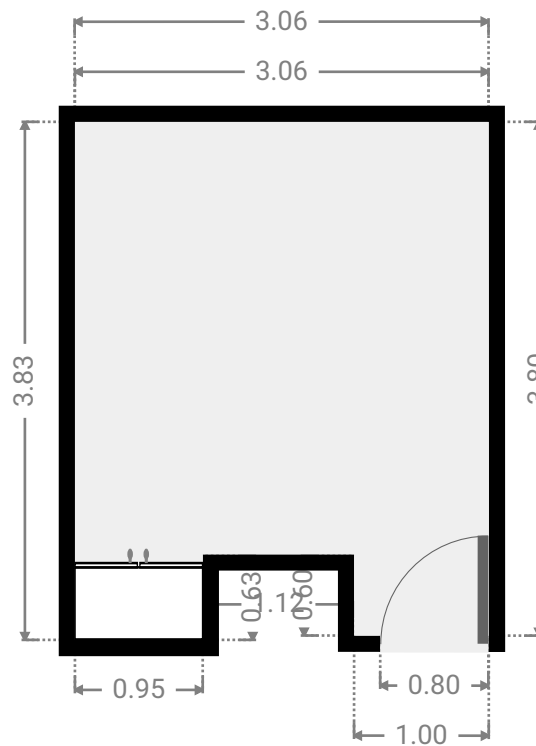
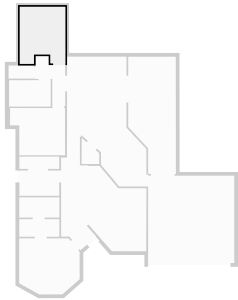
## ▼ Bedroom Ground Floor

WIDTH: 3.71 m • LENGTH: 3.18 m  
AREA: 10.50 m<sup>2</sup> • PERIMETER: 13.75 m



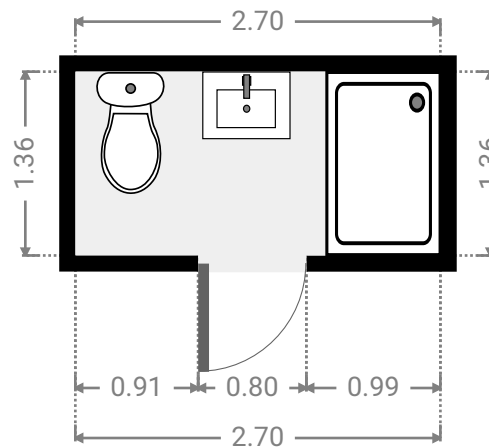
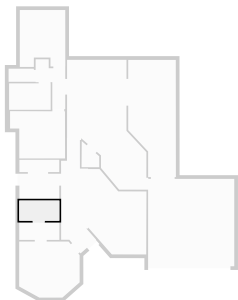
## ▼ Bedroom Ground Floor

WIDTH: 3.06 m • LENGTH: 3.83 m  
AREA: 10.99 m<sup>2</sup> • PERIMETER: 14.99 m



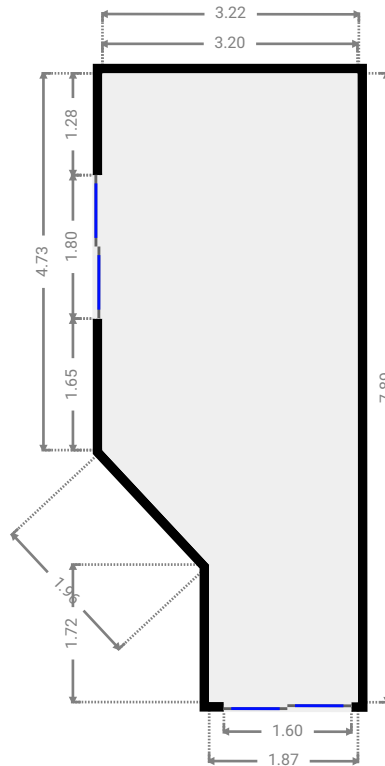
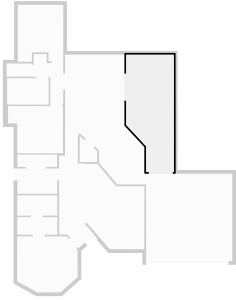
## ▼ Closet Ground Floor

WIDTH: 2.70 m • LENGTH: 1.36 m  
AREA: 3.67 m<sup>2</sup> • PERIMETER: 8.12 m



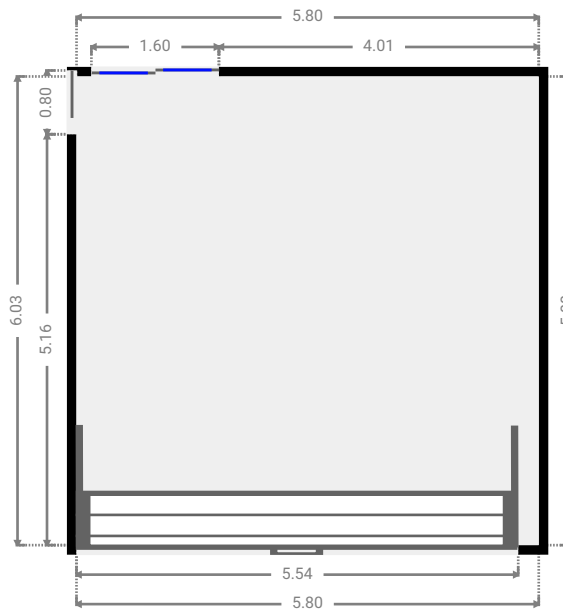
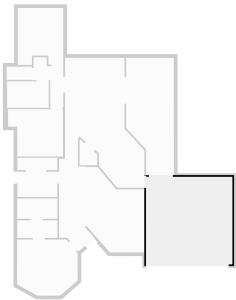
## ▼ Entertainment Area Ground Floor

WIDTH: 3.22 m • LENGTH: 7.89 m  
AREA: 22.00 m<sup>2</sup> • PERIMETER: 21.37 m



## ▼ Garage Ground Floor

WIDTH: 5.80 m • LENGTH: 5.88 m  
AREA: 34.10 m<sup>2</sup> • PERIMETER: 23.36 m

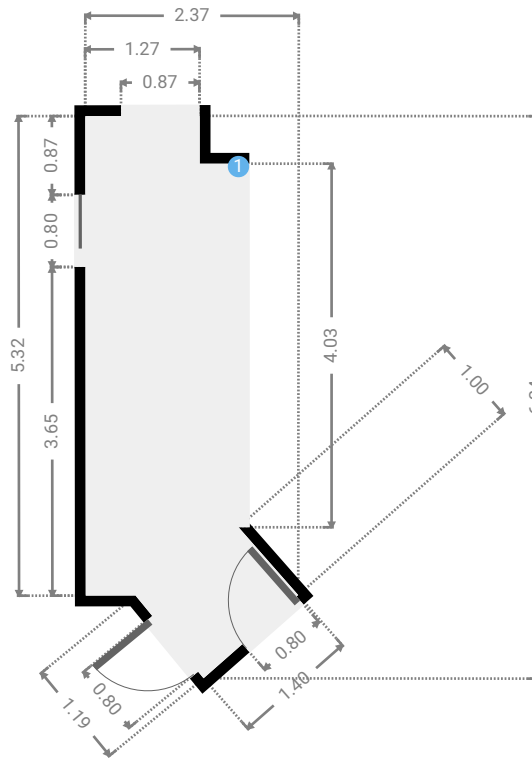
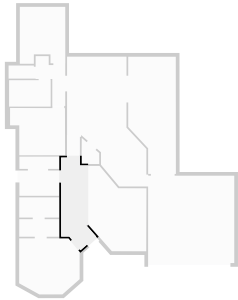


# 15 Triton Close

FLOORS: 1

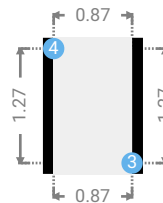
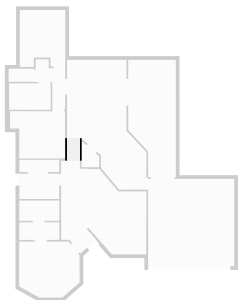
## ▼ Hall Ground Floor

WIDTH: 2.37 m • LENGTH: 6.24 m  
AREA: 9.88 m<sup>2</sup> • PERIMETER: 15.73 m



## ▼ Hall Ground Floor

WIDTH: 0.87 m • LENGTH: 1.27 m  
AREA: 1.10 m<sup>2</sup> • PERIMETER: 4.28 m



▼ **Hall/Ground Floor**

---

**3 OPENING**

Height  
0.00 m



---

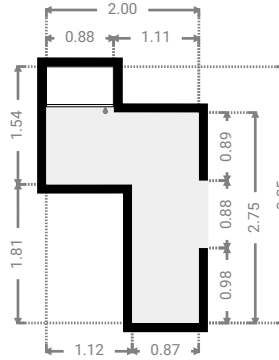
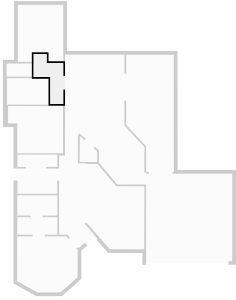
**4 OPENING**

Height  
0.00 m



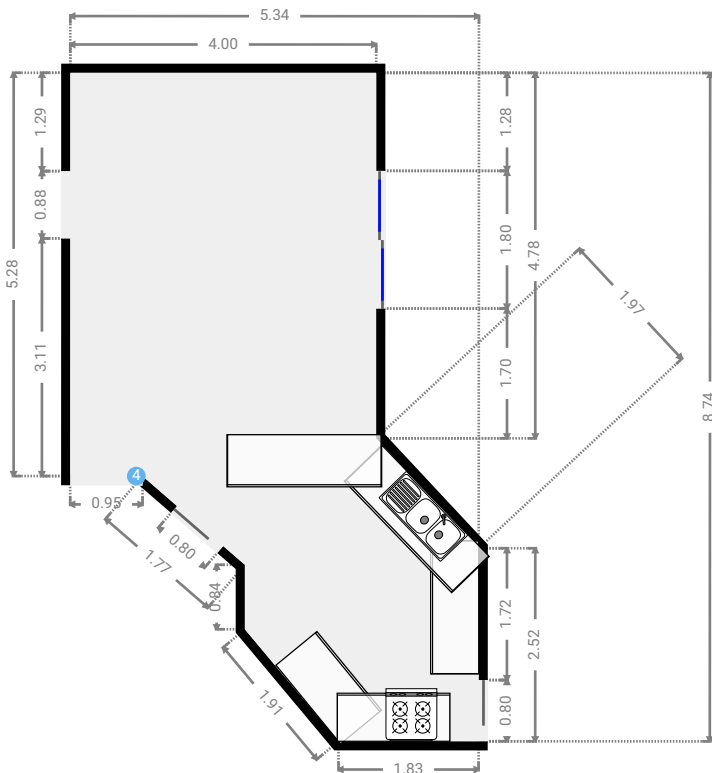
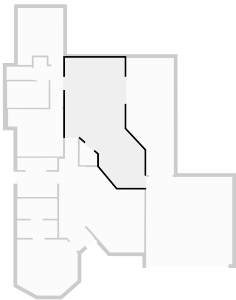
## ▼ Hall Ground Floor

WIDTH: 2.00 m • LENGTH: 3.35 m  
AREA: 3.98 m<sup>2</sup> • PERIMETER: 10.69 m



## ▼ Kitchen Ground Floor

WIDTH: 5.34 m • LENGTH: 8.74 m  
AREA: 31.26 m<sup>2</sup> • PERIMETER: 25.84 m

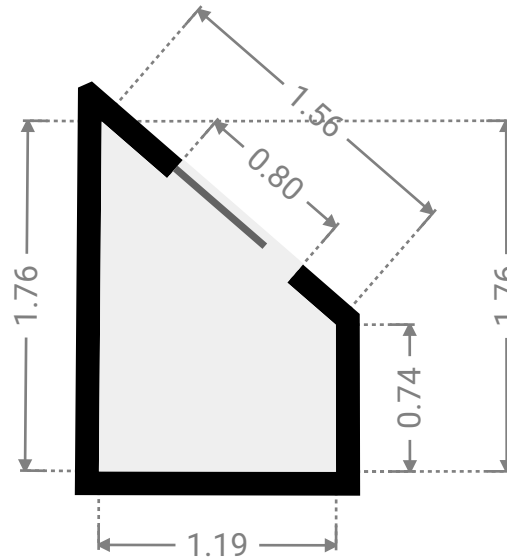
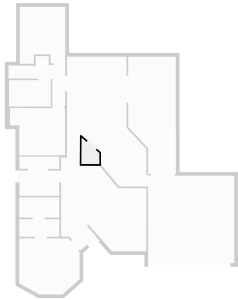




FLOORS: 1

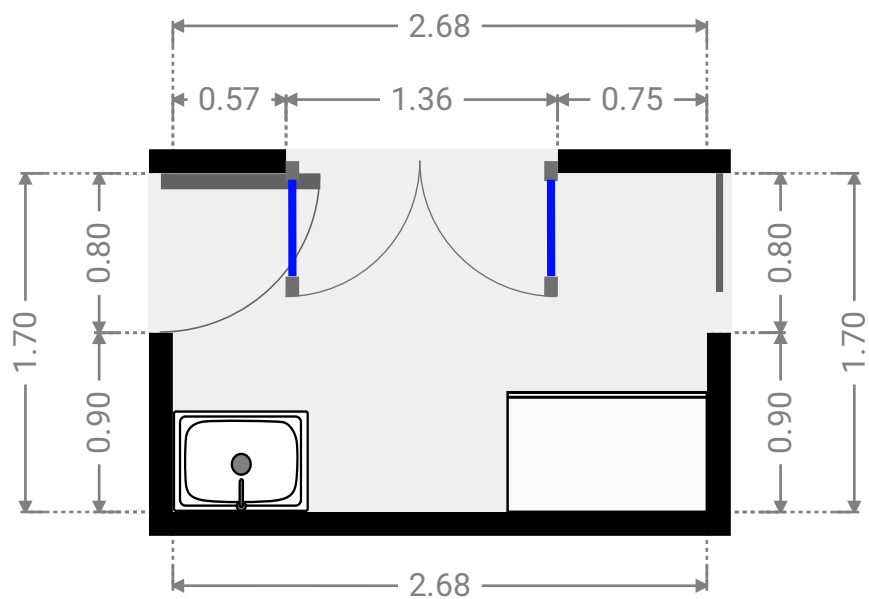
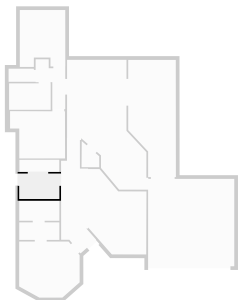
▼ **Closet**  
Ground Floor

WIDTH: 1.19 m • LENGTH: 1.76 m  
AREA: 1.48 m<sup>2</sup> • PERIMETER: 5.24 m



▼ **Laundry Room**  
Ground Floor

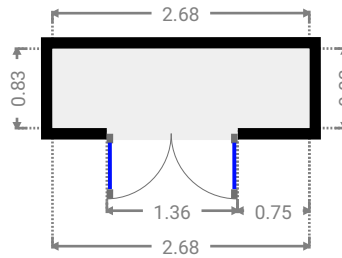
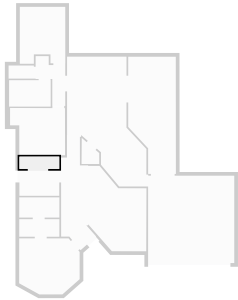
WIDTH: 2.68 m • LENGTH: 1.70 m  
AREA: 4.56 m<sup>2</sup> • PERIMETER: 8.76 m



FLOORS: 1

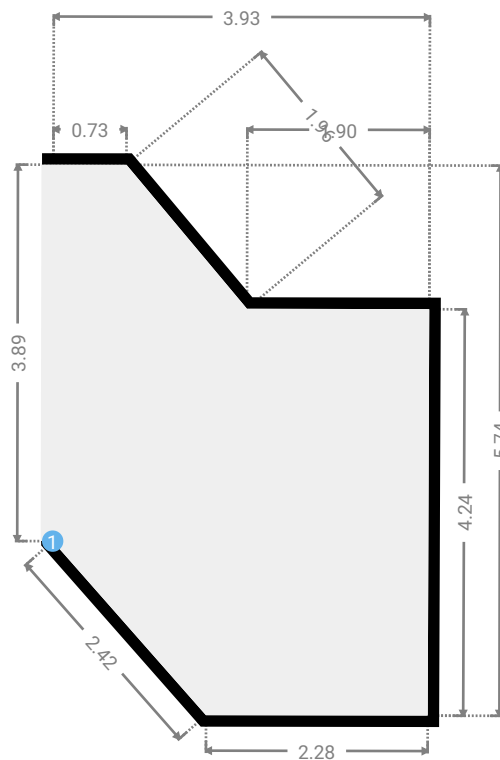
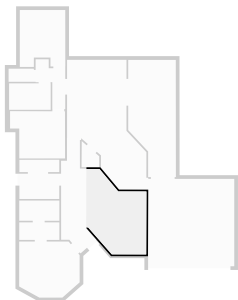
▼ **Closet**  
Ground Floor

WIDTH: 2.68 m • LENGTH: 0.83 m  
AREA: 2.22 m<sup>2</sup> • PERIMETER: 7.02 m



▼ **Living Room**  
Ground Floor

WIDTH: 3.93 m • LENGTH: 5.74 m  
AREA: 17.26 m<sup>2</sup> • PERIMETER: 17.53 m



## ▼ Living Room/Ground Floor

### 1 OPENING

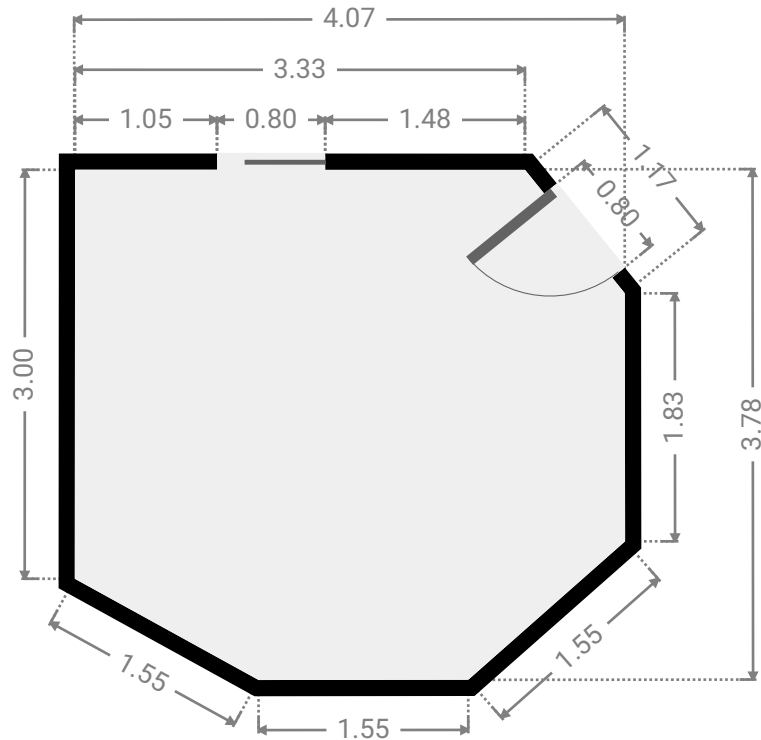
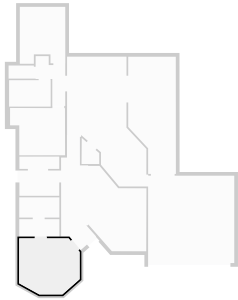
Height  
0.00 m



FLOORS: 1

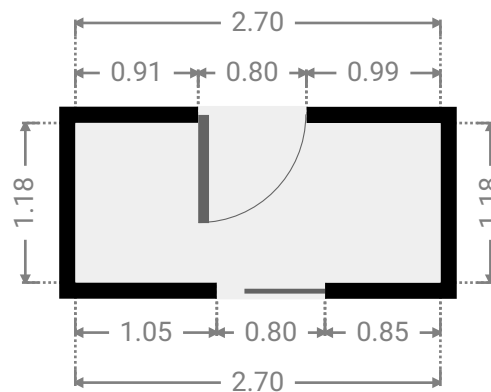
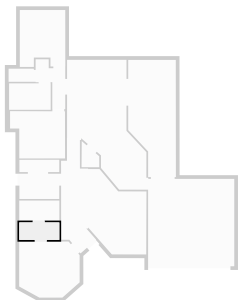
▼ Primary Bedroom  
Ground Floor

WIDTH: 4.07 m • LENGTH: 3.78 m  
AREA: 13.91 m<sup>2</sup> • PERIMETER: 14.01 m



▼ Closet  
Ground Floor

WIDTH: 2.70 m • LENGTH: 1.18 m  
AREA: 3.19 m<sup>2</sup> • PERIMETER: 7.76 m



# 15 Triton Close

FLOORS: 1

## ▼ Toilet Ground Floor

WIDTH: 1.70 m • LENGTH: 0.88 m  
AREA: 1.50 m<sup>2</sup> • PERIMETER: 5.16 m

