

15 Swadling Avenue

SUBMITTED BY
Ray White Rockhampton Casey
stockers@cqoz.com

CREATED ON
2022-01-17

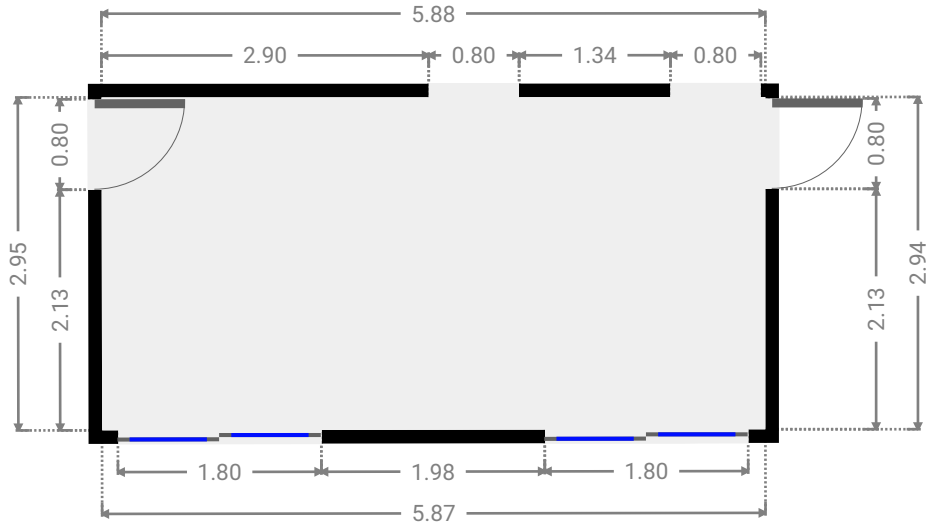
Floors
1

▼ Ground Floor



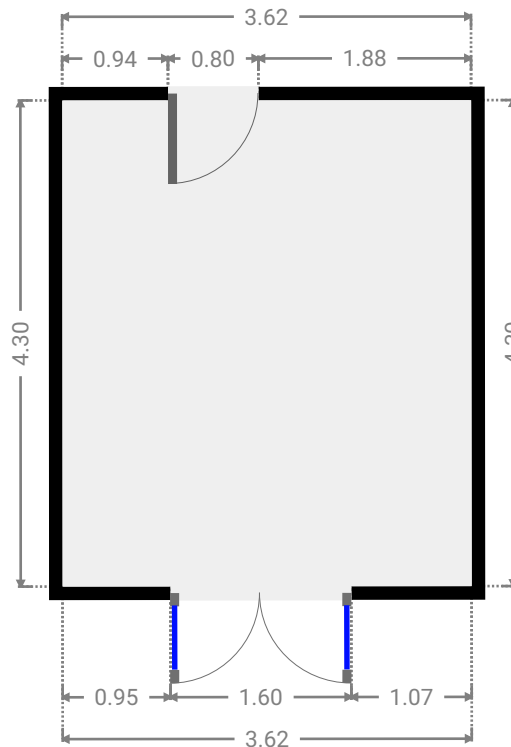
▼ **Courtyard**
Ground Floor

WIDTH: 5.88 m • LENGTH: 2.95 m
AREA: 17.28 m² • PERIMETER: 17.63 m



▼ **Other**
Ground Floor

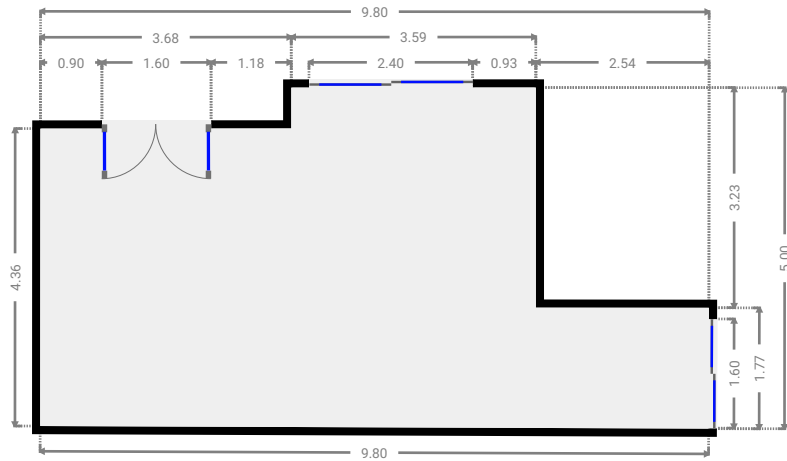
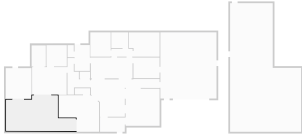
WIDTH: 3.62 m • LENGTH: 4.30 m
AREA: 15.57 m² • PERIMETER: 15.84 m



FLOORS: 1

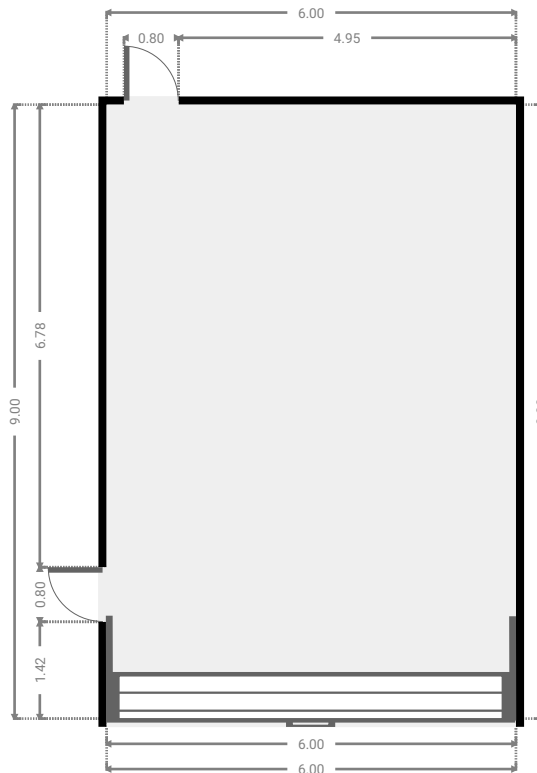
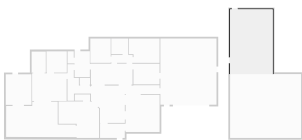
▼ Other
Ground Floor

WIDTH: 9.80 m • LENGTH: 5.00 m
AREA: 38.42 m² • PERIMETER: 29.56 m



▼ Garage
Ground Floor

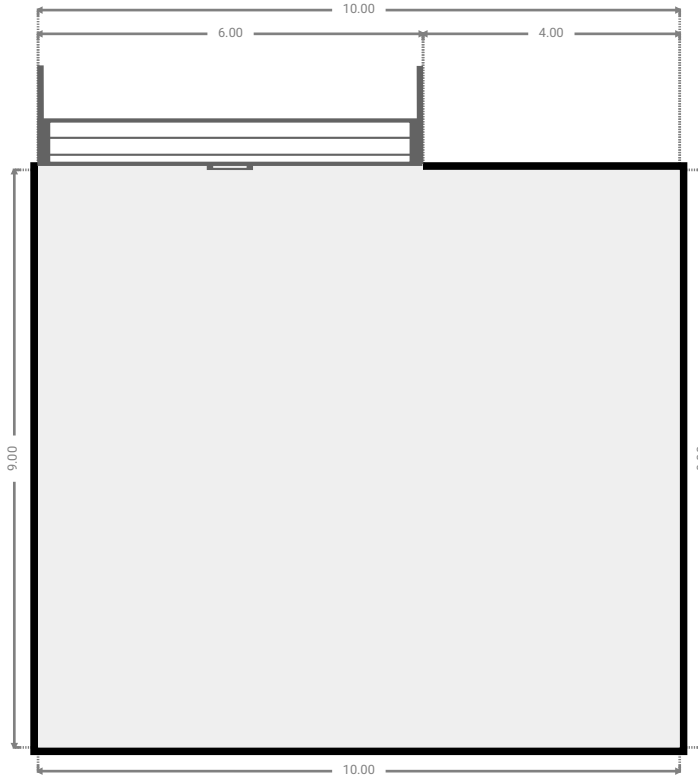
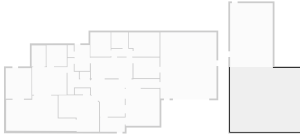
WIDTH: 6.00 m • LENGTH: 9.00 m
AREA: 54.00 m² • PERIMETER: 30.00 m



FLOORS: 1

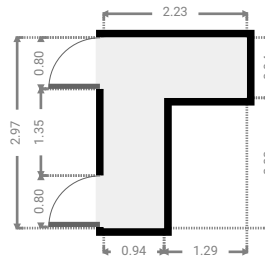
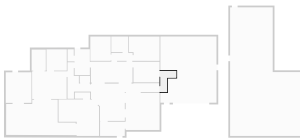
▼ **Awning**
Ground Floor

WIDTH: 10.00 m • LENGTH: 9.00 m
AREA: 90.00 m² • PERIMETER: 38.00 m



▼ **Hall**
Ground Floor

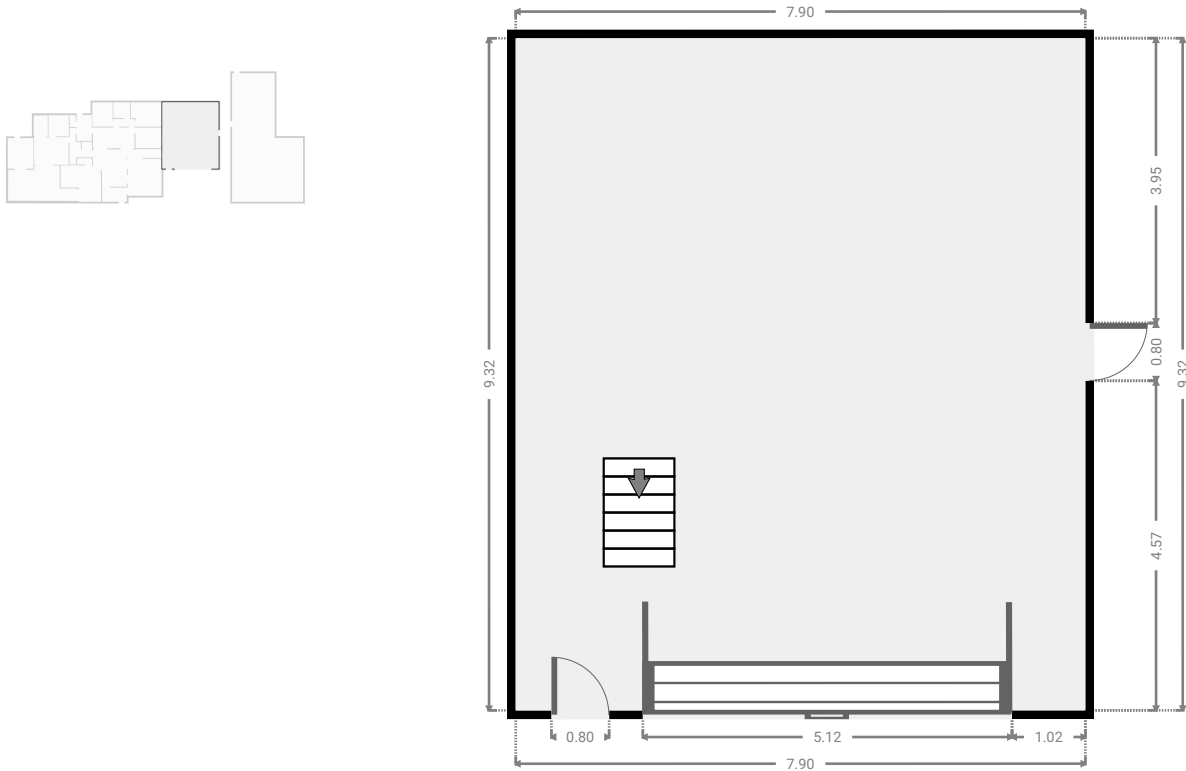
WIDTH: 2.23 m • LENGTH: 2.97 m
AREA: 4.00 m² • PERIMETER: 10.40 m



FLOORS: 1

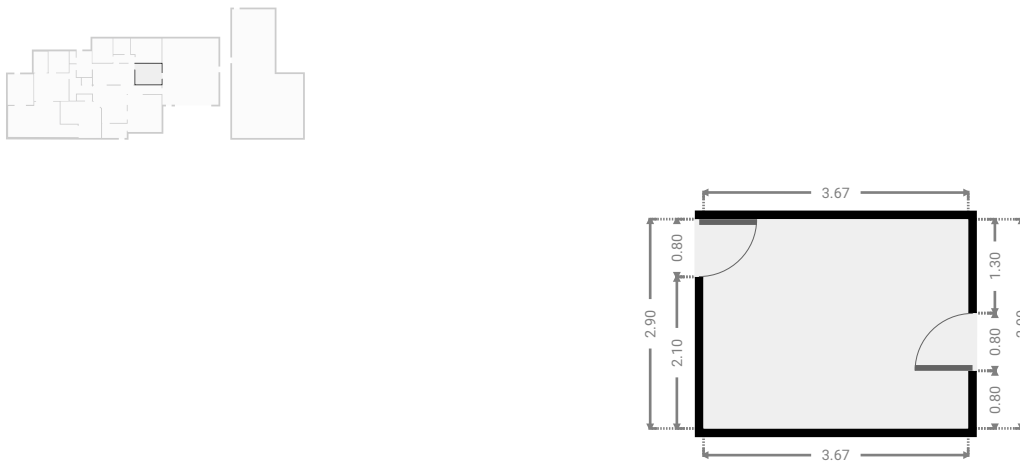
▼ **Garage**
Ground Floor

WIDTH: 7.90 m • LENGTH: 9.32 m
AREA: 73.62 m² • PERIMETER: 34.44 m



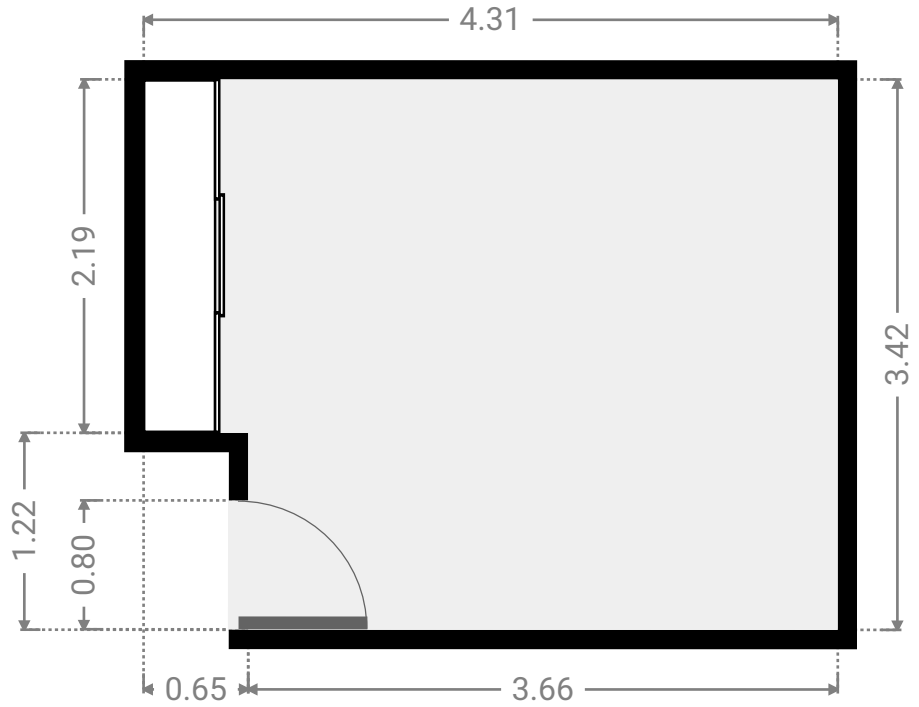
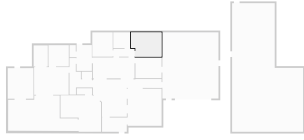
▼ **Study**
Ground Floor

WIDTH: 3.67 m • LENGTH: 2.90 m
AREA: 10.65 m² • PERIMETER: 13.14 m



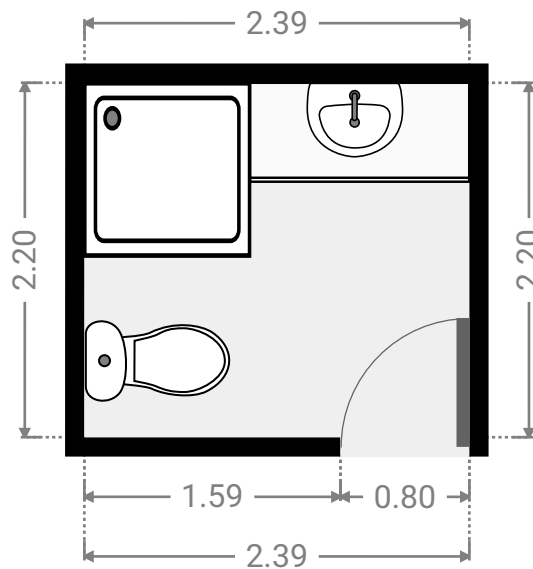
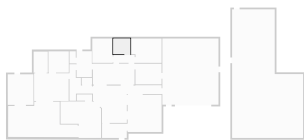
▼ **Bedroom**
Ground Floor

WIDTH: 4.31 m • LENGTH: 3.42 m
AREA: 13.93 m² • PERIMETER: 15.45 m



▼ **Bathroom**
Ground Floor

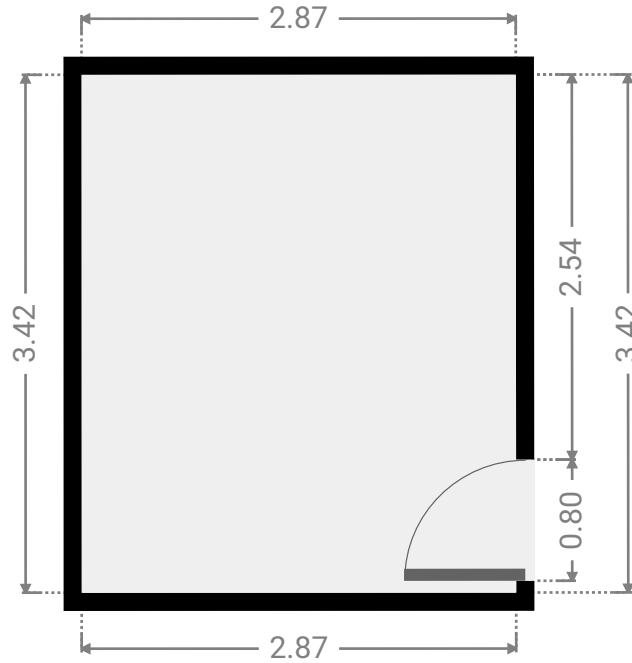
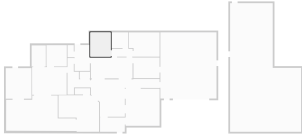
WIDTH: 2.39 m • LENGTH: 2.20 m
AREA: 5.26 m² • PERIMETER: 9.18 m



FLOORS: 1

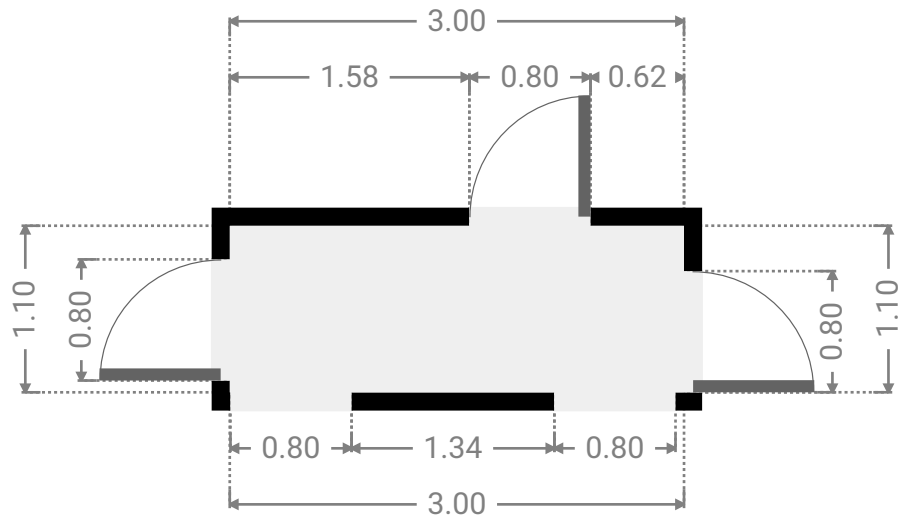
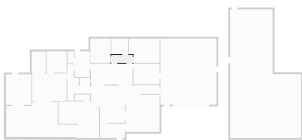
▼ **Bedroom**
Ground Floor

WIDTH: 2.87 m • LENGTH: 3.42 m
AREA: 9.81 m² • PERIMETER: 12.58 m



▼ **Hall**
Ground Floor

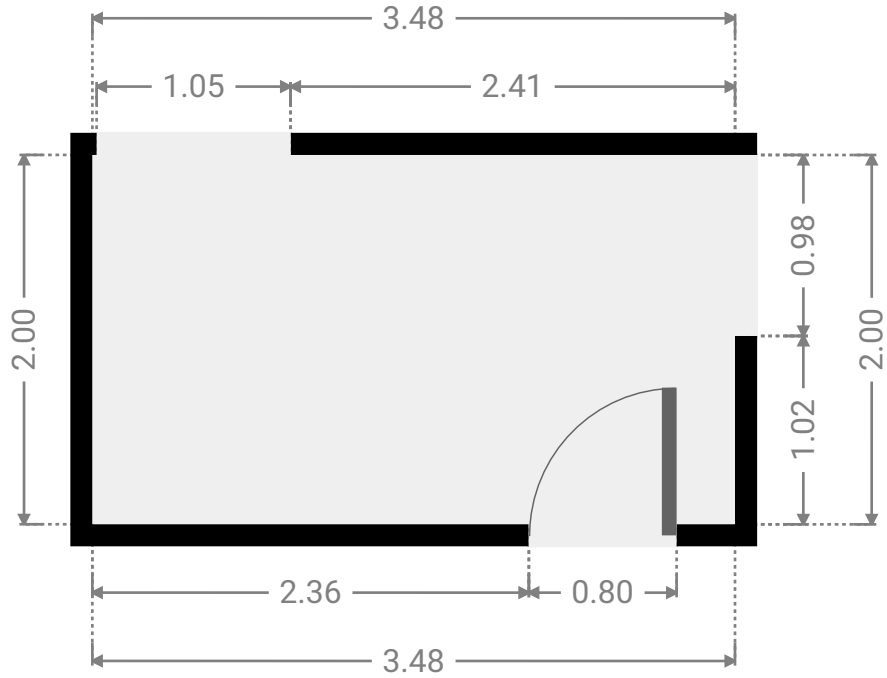
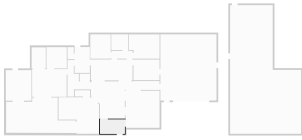
WIDTH: 3.00 m • LENGTH: 1.10 m
AREA: 3.30 m² • PERIMETER: 8.20 m



FLOORS: 1

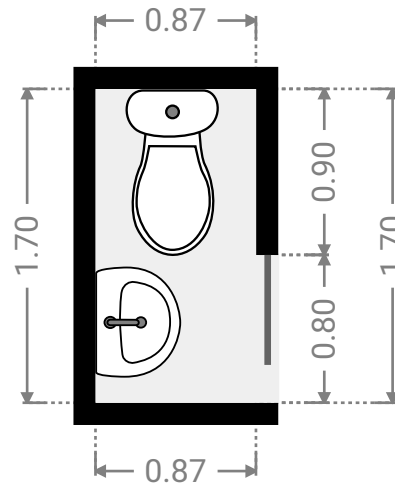
▼ **Hall**
Ground Floor

WIDTH: 3.48 m • LENGTH: 2.00 m
AREA: 6.96 m² • PERIMETER: 10.96 m



▼ **Toilet**
Ground Floor

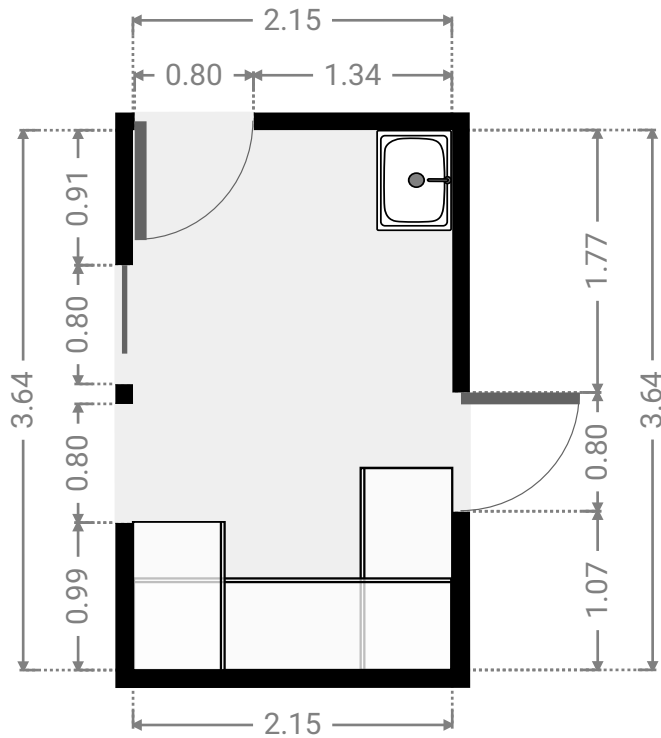
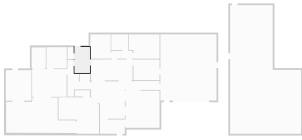
WIDTH: 0.87 m • LENGTH: 1.70 m
AREA: 1.48 m² • PERIMETER: 5.14 m



FLOORS: 1

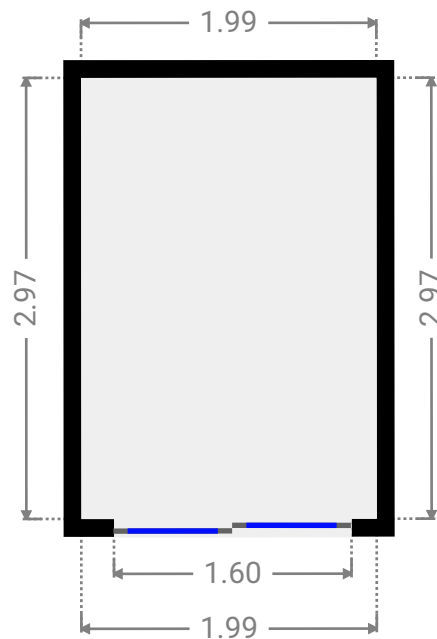
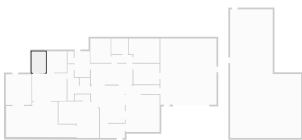
▼ **Laundry Room**
Ground Floor

WIDTH: 2.15 m • LENGTH: 3.64 m
AREA: 7.81 m² • PERIMETER: 11.57 m



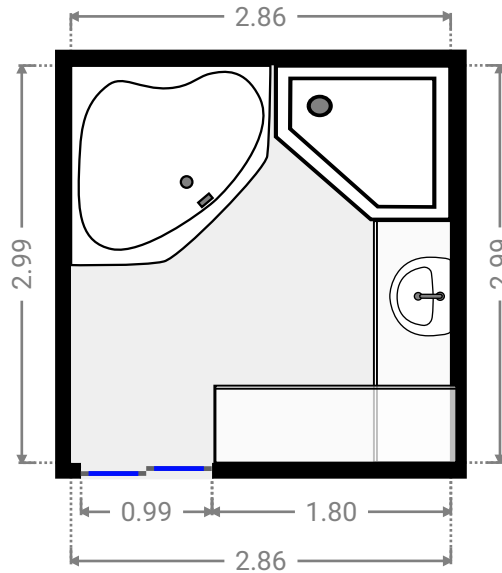
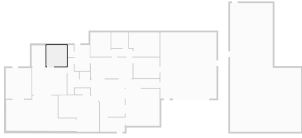
▼ **Closet**
Ground Floor

WIDTH: 1.99 m • LENGTH: 2.97 m
AREA: 5.91 m² • PERIMETER: 9.92 m



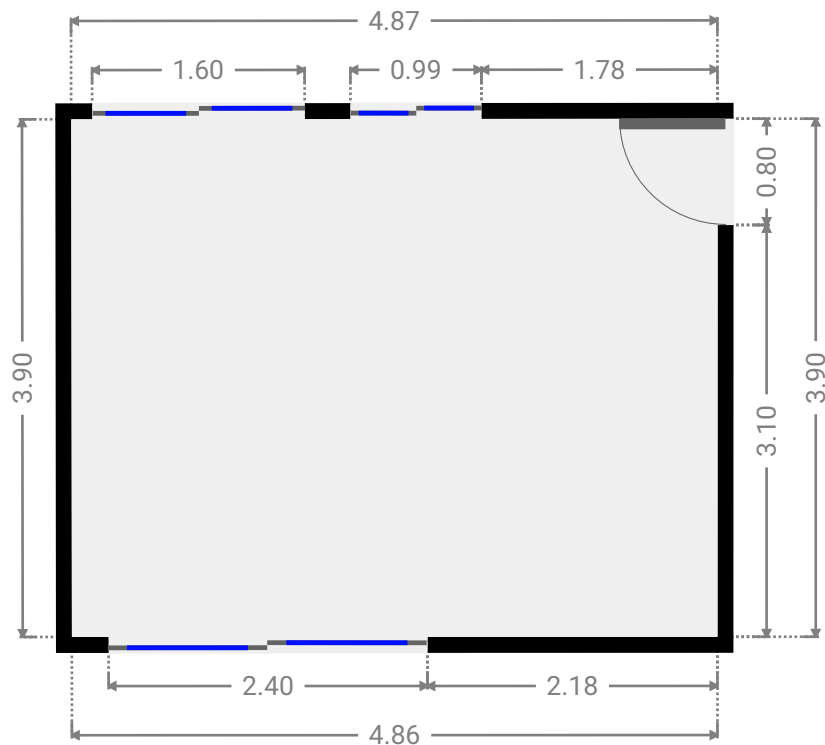
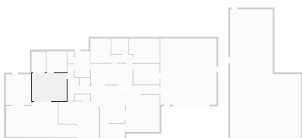
▼ **Bathroom**
Ground Floor

WIDTH: 2.86 m • LENGTH: 2.99 m
AREA: 8.55 m² • PERIMETER: 11.70 m



▼ **Master Bedroom**
Ground Floor

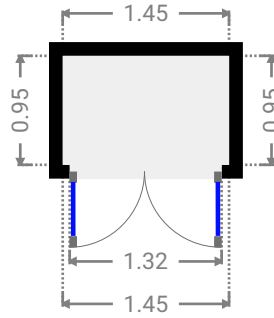
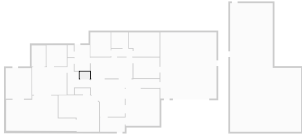
WIDTH: 4.87 m • LENGTH: 3.90 m
AREA: 18.96 m² • PERIMETER: 17.52 m



FLOORS: 1

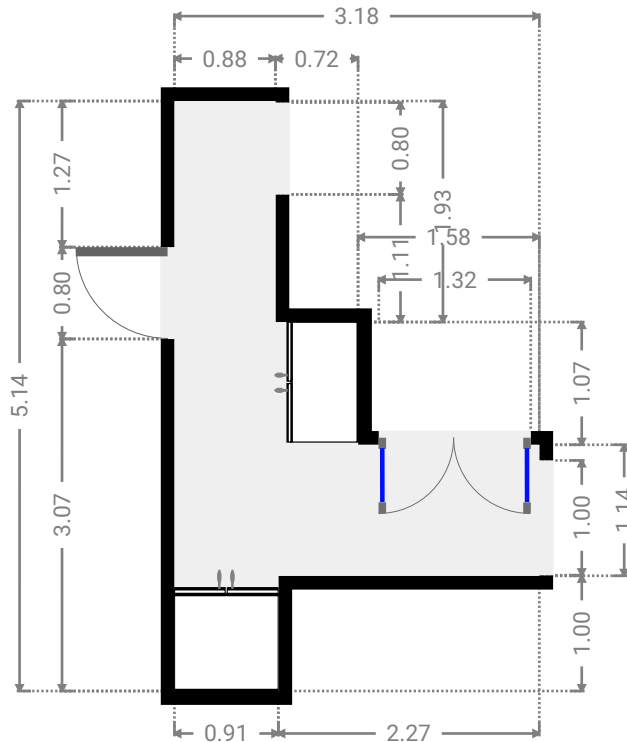
▼ Closet
Ground Floor

WIDTH: 1.45 m • LENGTH: 0.95 m
AREA: 1.38 m² • PERIMETER: 4.80 m



▼ Hall
Ground Floor

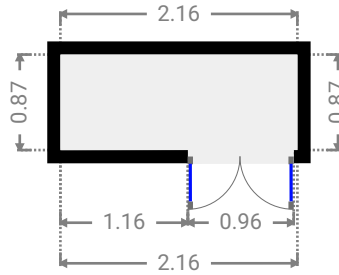
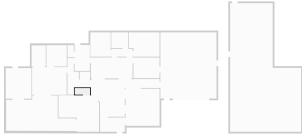
WIDTH: 3.18 m • LENGTH: 5.14 m
AREA: 7.95 m² • PERIMETER: 16.65 m



FLOORS: 1

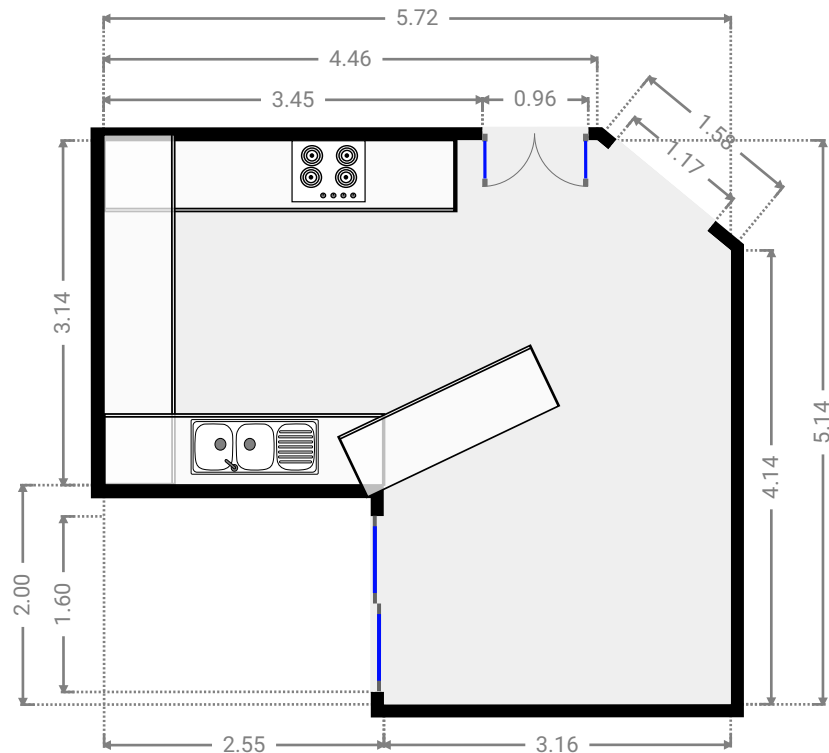
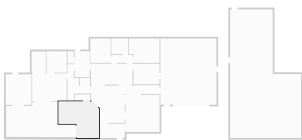
▼ **Closet**
Ground Floor

WIDTH: 2.16 m • LENGTH: 0.87 m
AREA: 1.88 m² • PERIMETER: 6.06 m



▼ **Kitchen**
Ground Floor

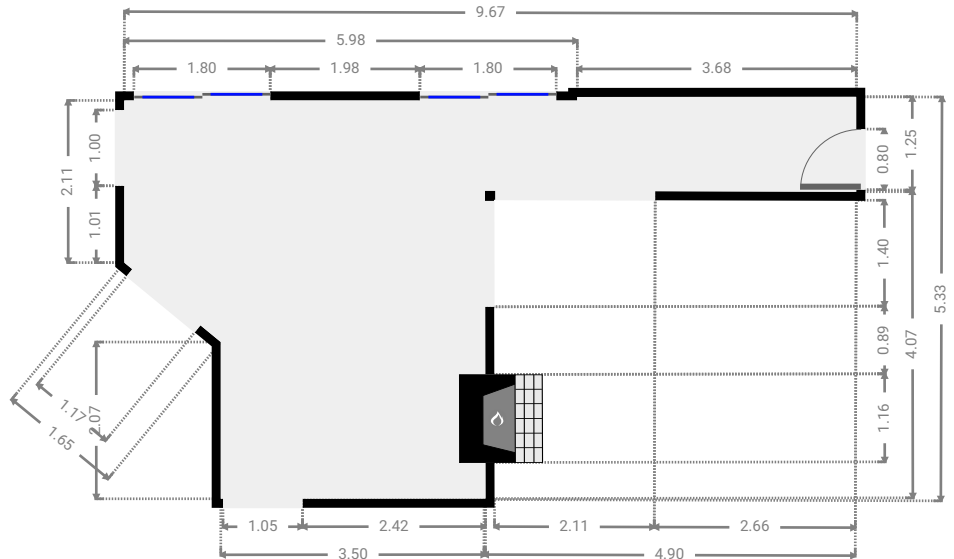
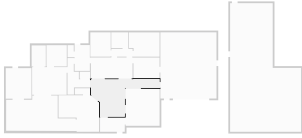
WIDTH: 5.72 m • LENGTH: 5.14 m
AREA: 23.65 m² • PERIMETER: 21.06 m



FLOORS: 1

▼ Dining Room
Ground Floor

WIDTH: 9.67 m • LENGTH: 5.33 m
AREA: 27.81 m² • PERIMETER: 29.30 m



▼ Living Room
Ground Floor

WIDTH: 4.78 m • LENGTH: 5.22 m
AREA: 24.95 m² • PERIMETER: 20.00 m

