

13 Stenlake Avenue

Created on
2021-09-20

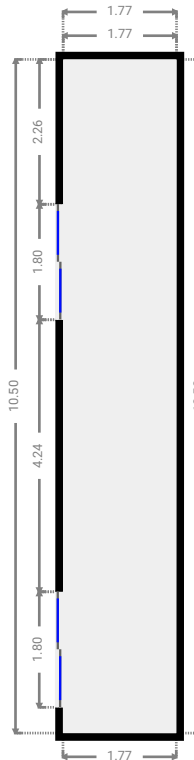
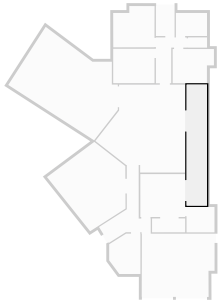
Floors
1

▼ Ground Floor



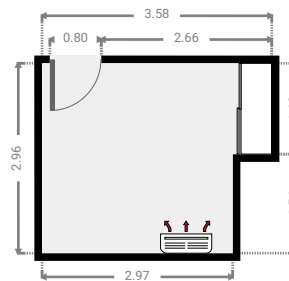
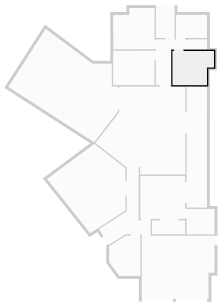
▼ Other
Ground Floor

WIDTH: 1.77 m • LENGTH: 10.50 m
AREA: 18.54 m² • PERIMETER: 24.53 m



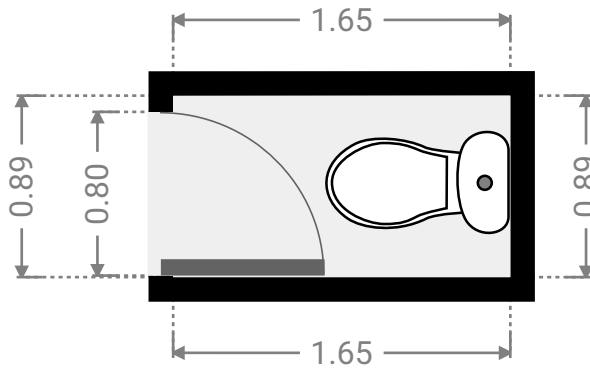
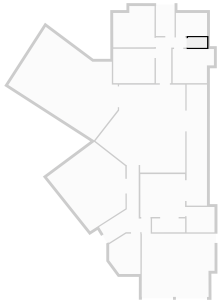
▼ Bedroom
Ground Floor

WIDTH: 3.58 m • LENGTH: 2.96 m
AREA: 9.65 m² • PERIMETER: 13.08 m



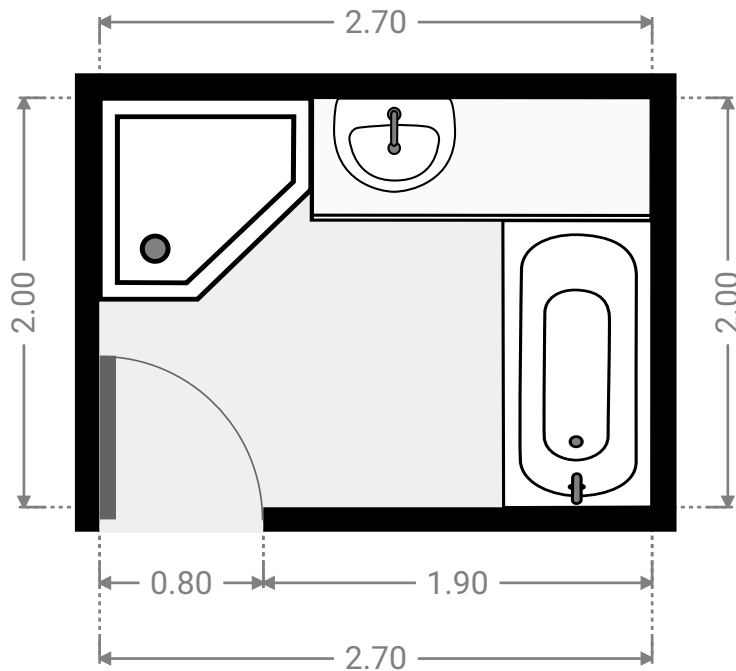
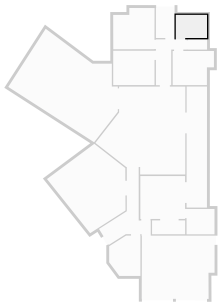
▼ **Toilet**
Ground Floor

WIDTH: 1.65 m • LENGTH: 0.89 m
AREA: 1.46 m² • PERIMETER: 5.07 m



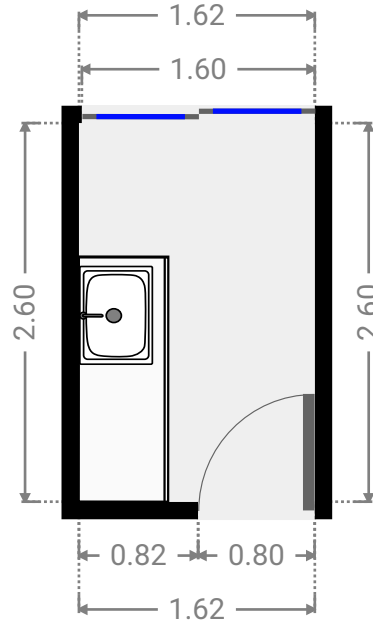
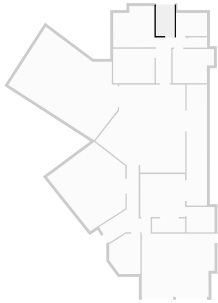
▼ **Bathroom**
Ground Floor

WIDTH: 2.70 m • LENGTH: 2.00 m
AREA: 5.40 m² • PERIMETER: 9.40 m



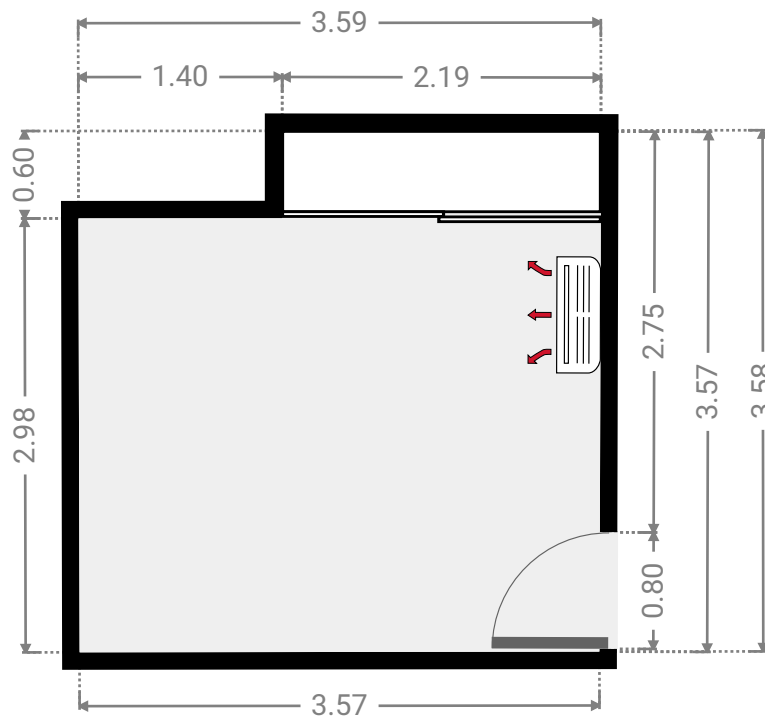
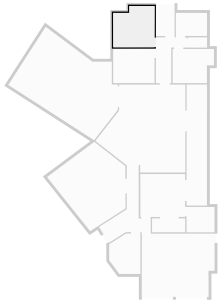
▼ **Laundry Room**
Ground Floor

WIDTH: 1.62 m • LENGTH: 2.60 m
AREA: 4.21 m² • PERIMETER: 8.44 m



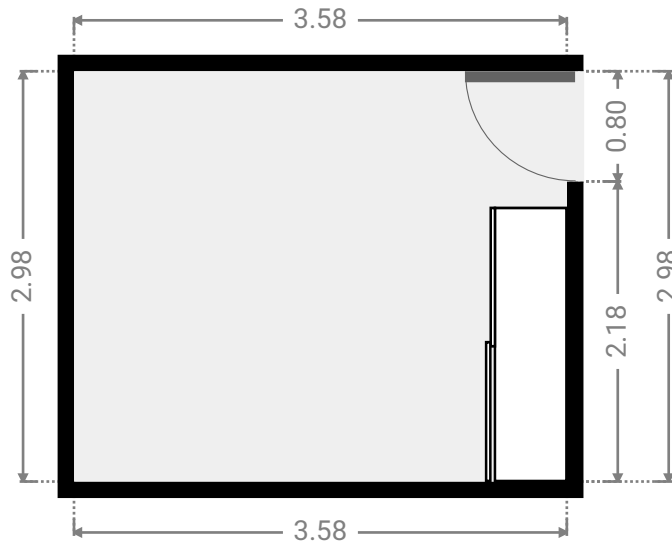
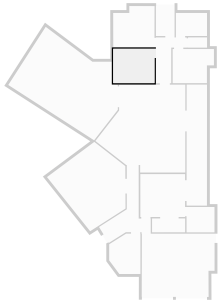
▼ **Bedroom**
Ground Floor

WIDTH: 3.59 m • LENGTH: 3.58 m
AREA: 11.97 m² • PERIMETER: 14.31 m



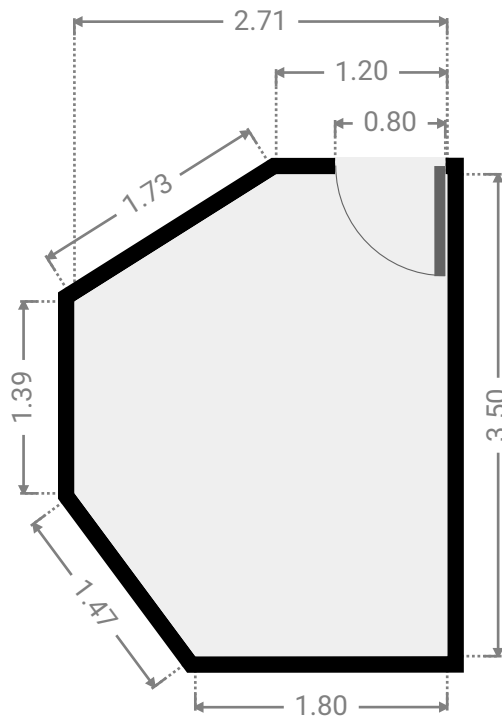
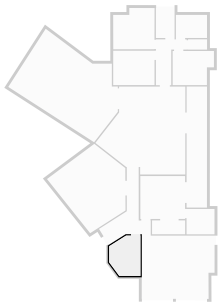
▼ **Bedroom**
Ground Floor

WIDTH: 3.58 m • LENGTH: 2.98 m
AREA: 10.67 m² • PERIMETER: 13.12 m



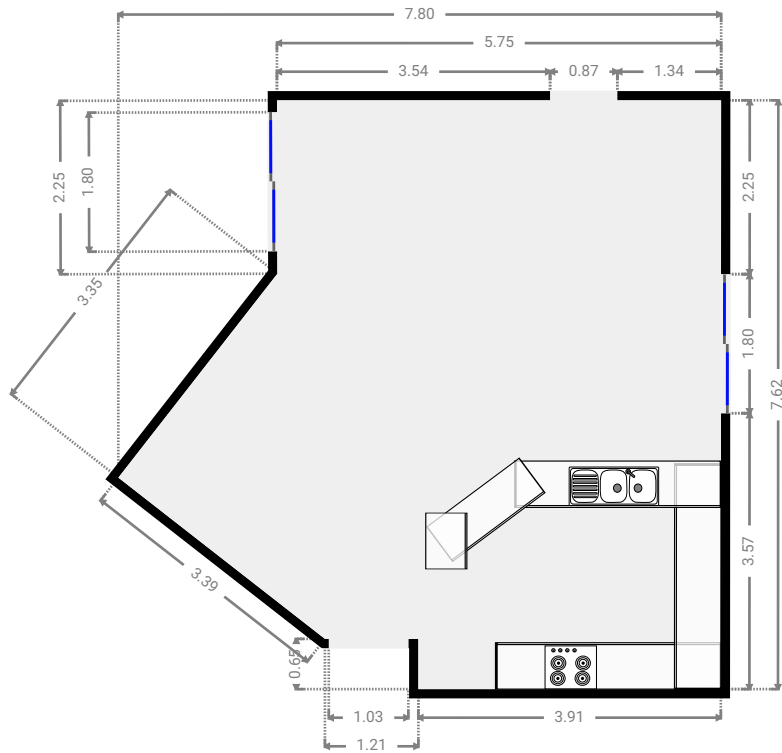
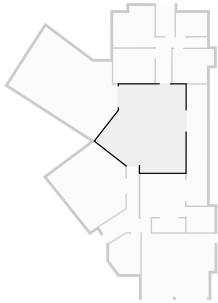
▼ **Study**
Ground Floor

WIDTH: 2.71 m • LENGTH: 3.50 m
AREA: 8.28 m² • PERIMETER: 11.17 m



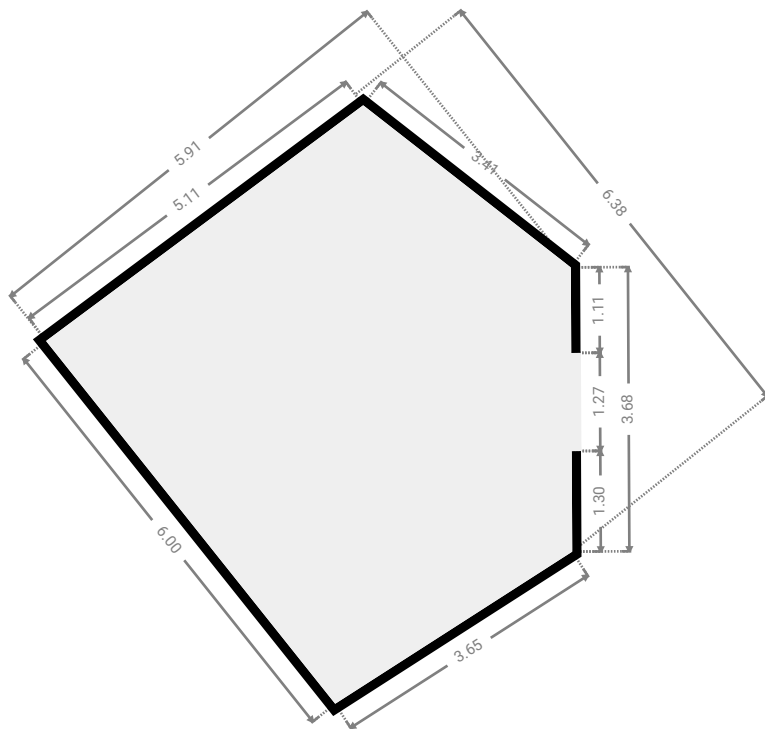
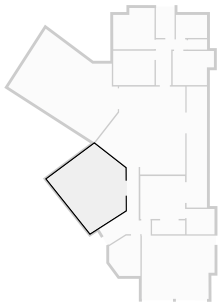
▼ **Kitchen**
Ground Floor

WIDTH: 7.80 m • LENGTH: 7.62 m
AREA: 46.80 m² • PERIMETER: 28.13 m



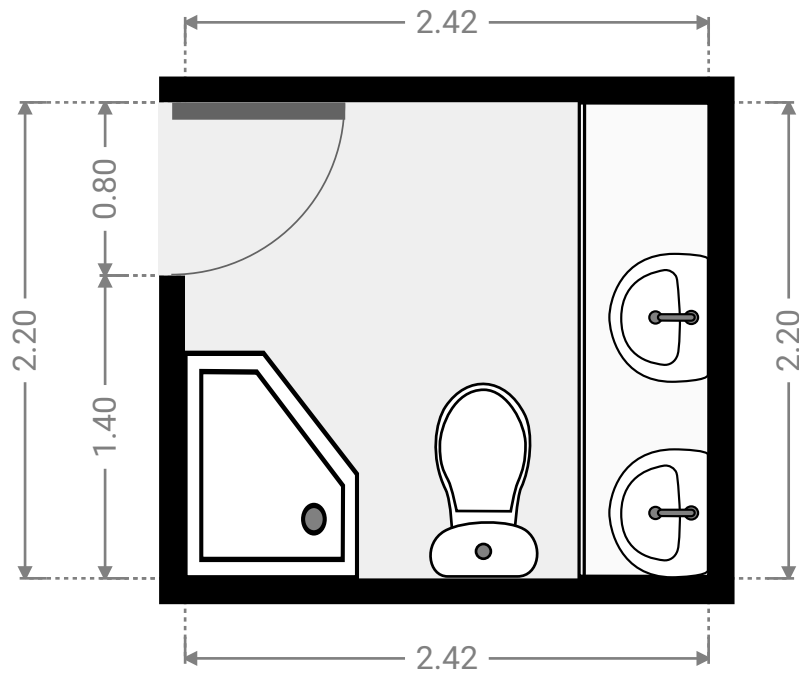
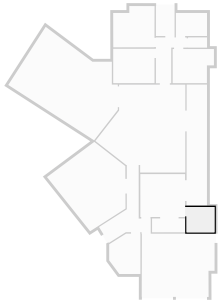
▼ **Living Room**
Ground Floor

WIDTH: 5.91 m • LENGTH: 6.38 m
AREA: 31.79 m² • PERIMETER: 21.85 m



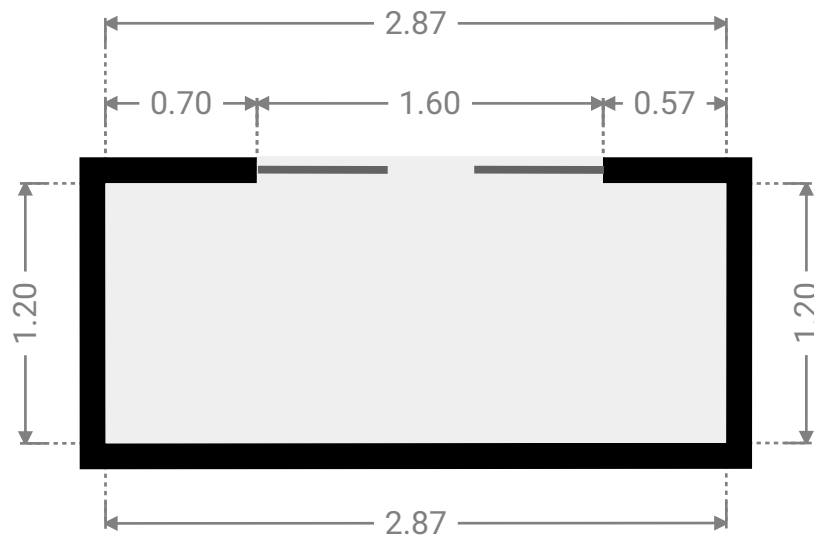
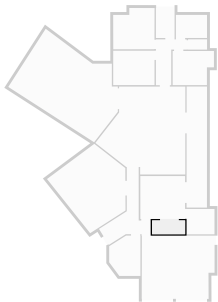
▼ Bathroom
Ground Floor

WIDTH: 2.42 m • LENGTH: 2.20 m
AREA: 5.32 m² • PERIMETER: 9.24 m



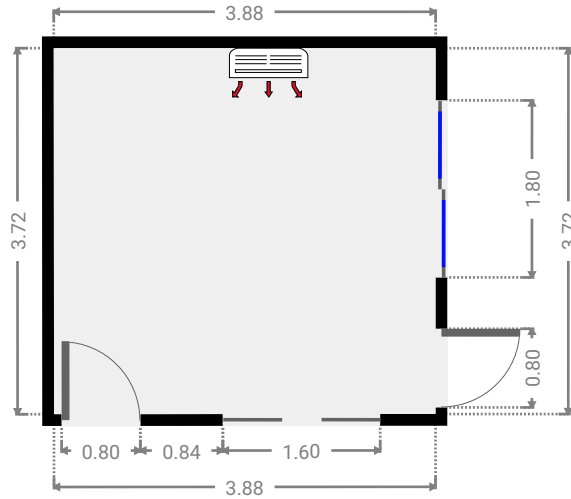
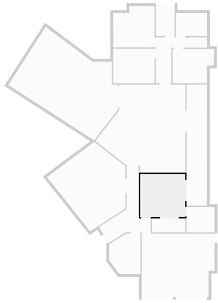
▼ Other
Ground Floor

WIDTH: 2.87 m • LENGTH: 1.20 m
AREA: 3.45 m² • PERIMETER: 8.14 m



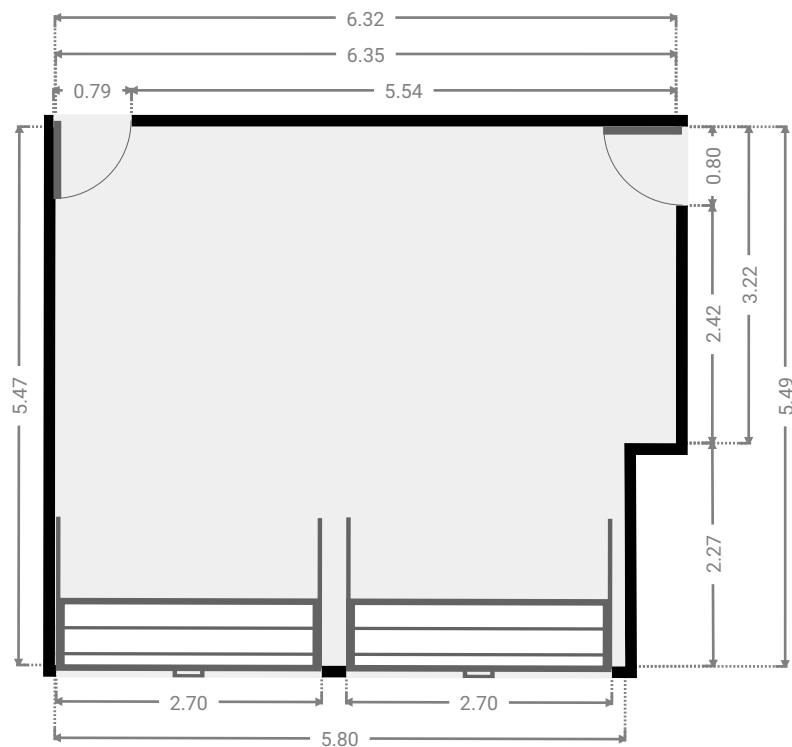
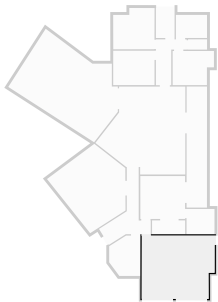
▼ **Master Bedroom**
Ground Floor

WIDTH: 3.88 m • LENGTH: 3.72 m
AREA: 14.45 m² • PERIMETER: 15.21 m



▼ **Garage**
Ground Floor

WIDTH: 6.32 m • LENGTH: 5.49 m
AREA: 33.41 m² • PERIMETER: 23.60 m



▼ Hall
Ground Floor

WIDTH: 4.48 m • LENGTH: 6.64 m
AREA: 10.95 m² • PERIMETER: 19.87 m

