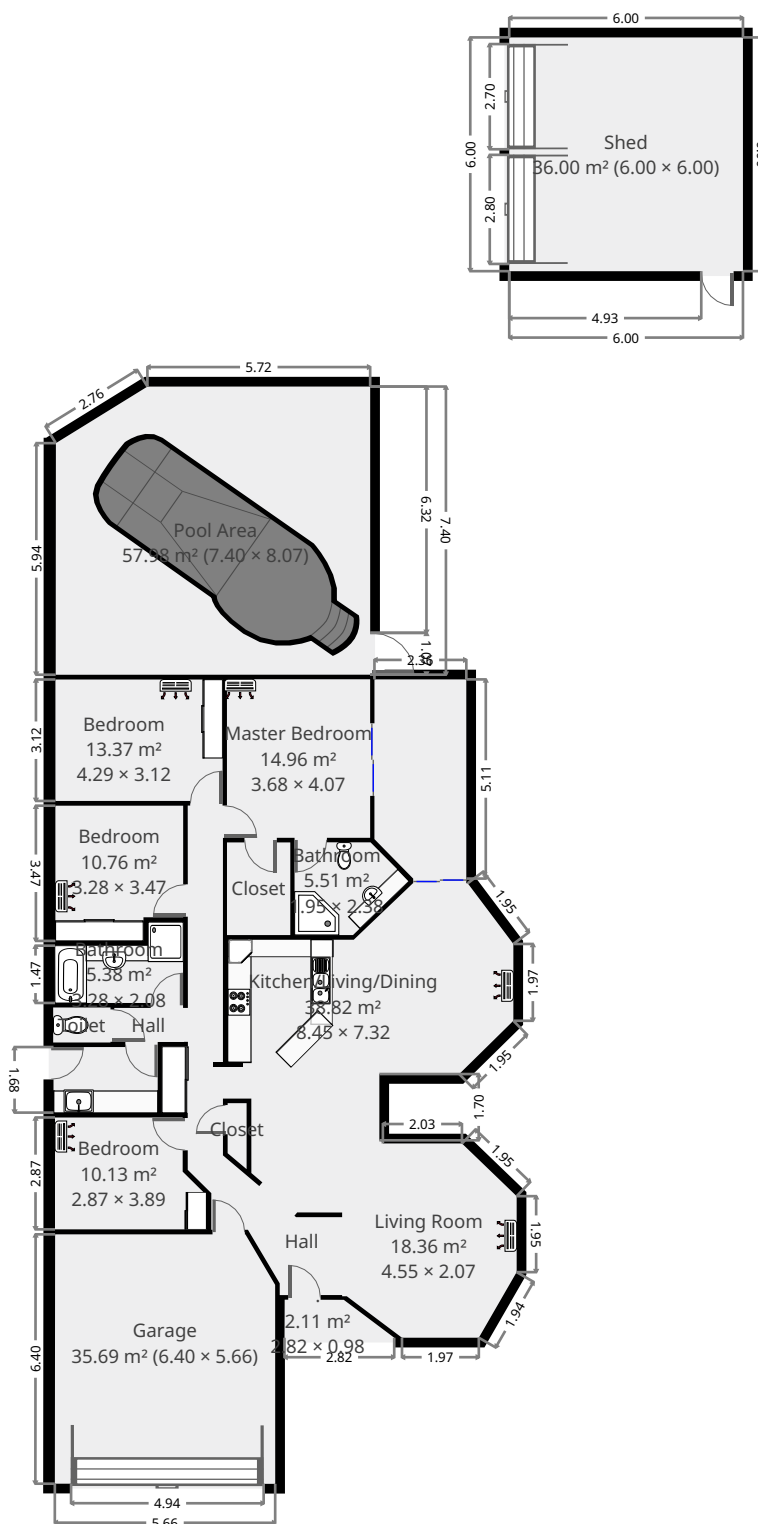
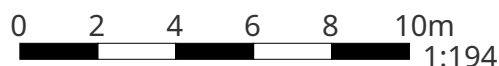


# 15 Mark Acton Close

## Ground Floor



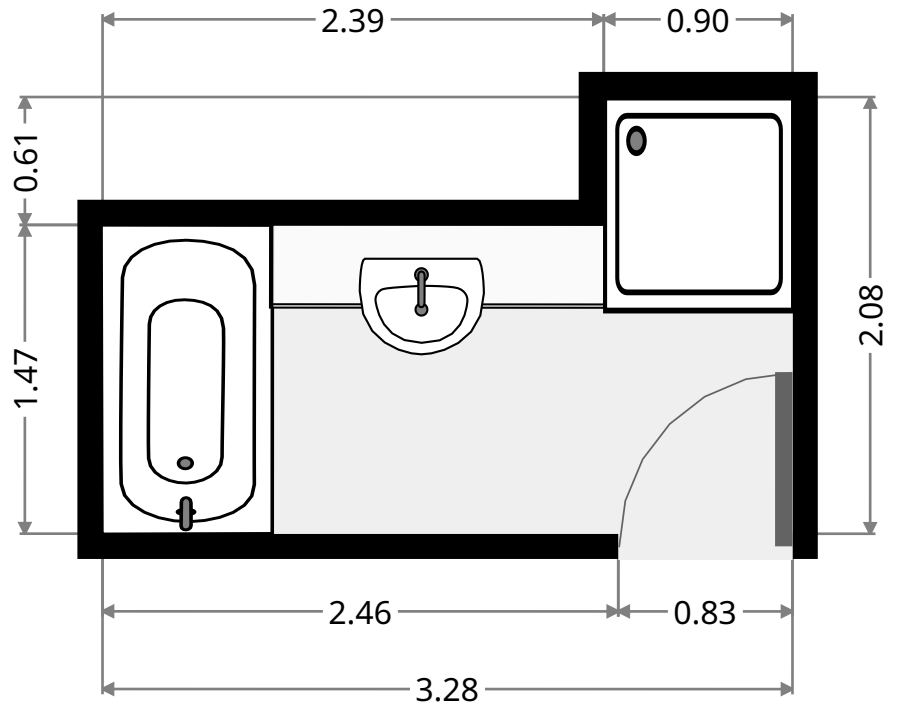
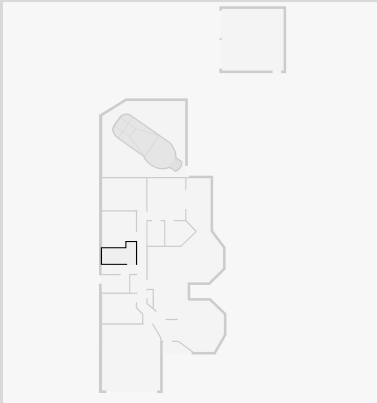
THIS FLOORPLAN IS PROVIDED WITHOUT WARRANTY OF ANY KIND. SENSOPIA DISCLAIMS ANY WARRANTY INCLUDING, WITHOUT LIMITATION, SATISFACTORY QUALITY OR ACCURACY OF DIMENSIONS.



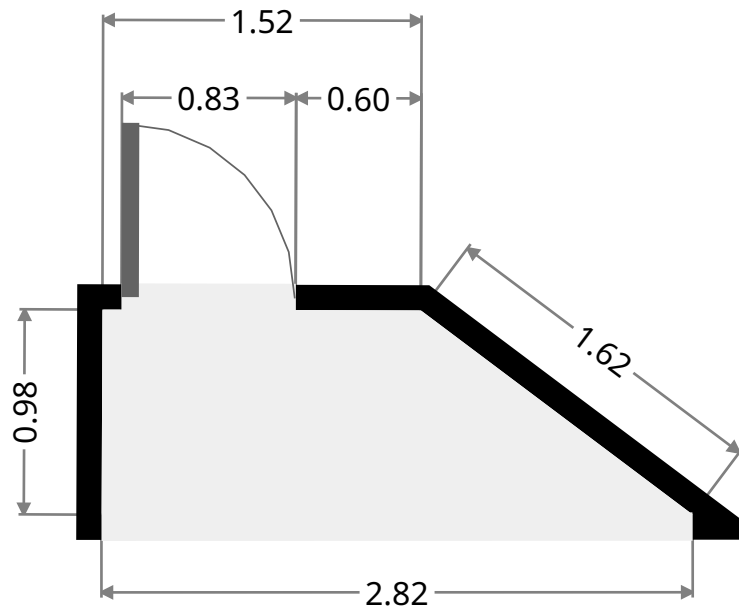
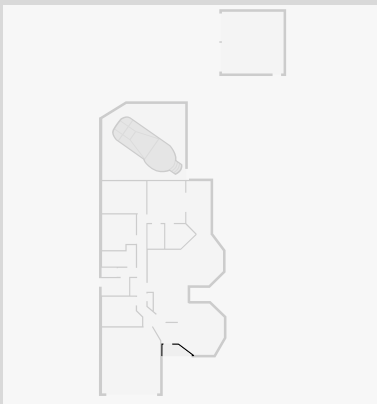
# 15 Mark Acton Close

## Bathroom

Width: 2.08 m  
 Length: 3.28 m  
 Area: 5.38 m<sup>2</sup>  
 Perimeter: 10.73 m



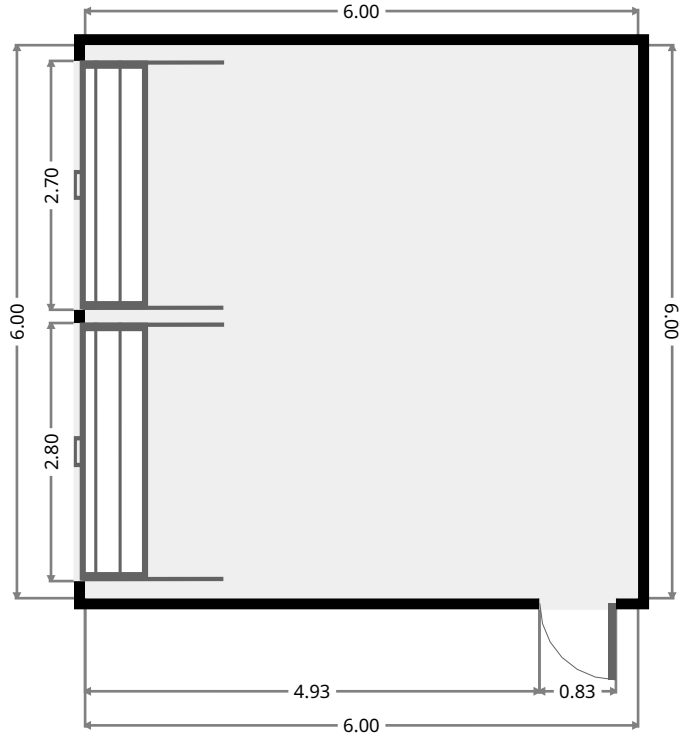
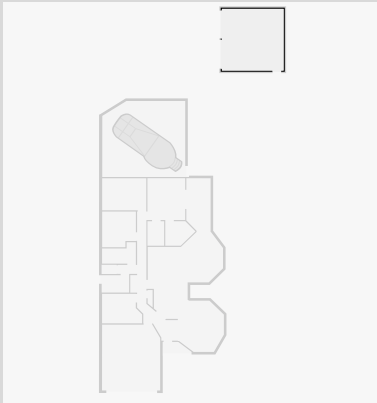
•  
 Width: 0.98 m  
 Length: 2.82 m  
 Area: 2.11 m<sup>2</sup>  
 Perimeter: 6.93 m



# 15 Mark Acton Close

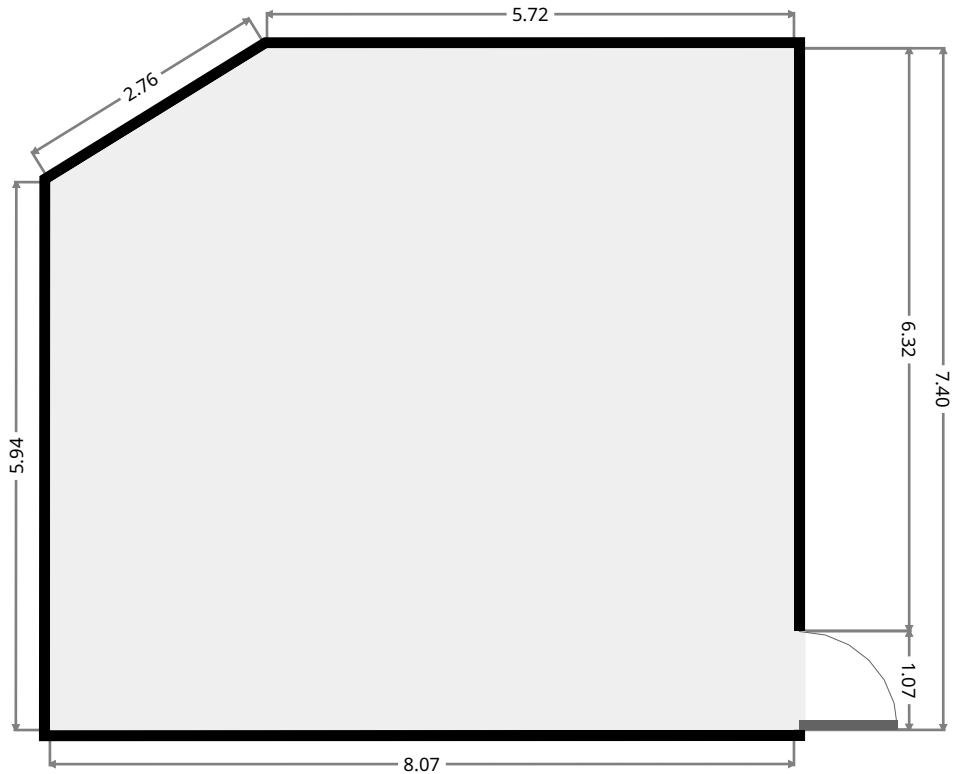
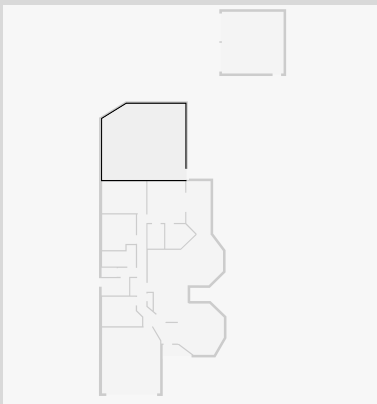
## Shed

Width: 6.00 m  
 Length: 6.00 m  
 Area: 36.00 m<sup>2</sup>  
 Perimeter: 24.00 m



## Pool Area

Width: 7.40 m  
 Length: 8.07 m  
 Area: 57.98 m<sup>2</sup>  
 Perimeter: 29.89 m

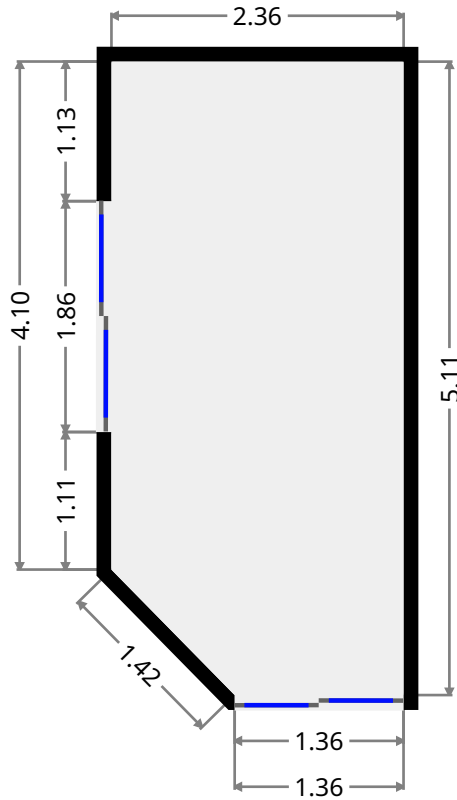
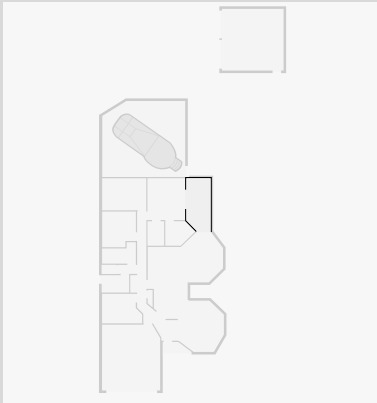


THIS FLOORPLAN IS PROVIDED WITHOUT WARRANTY OF ANY KIND. SENSOPIA DISCLAIMS ANY WARRANTY INCLUDING, WITHOUT LIMITATION, SATISFACTORY QUALITY OR ACCURACY OF DIMENSIONS.

# 15 Mark Acton Close

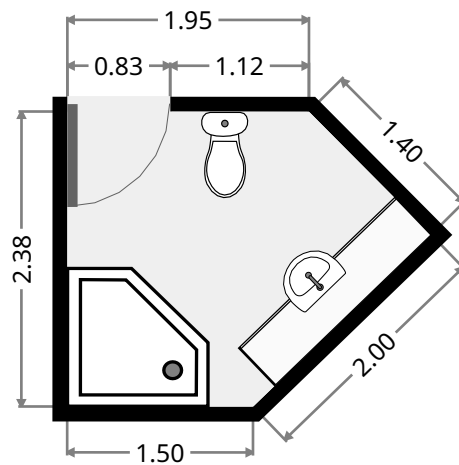
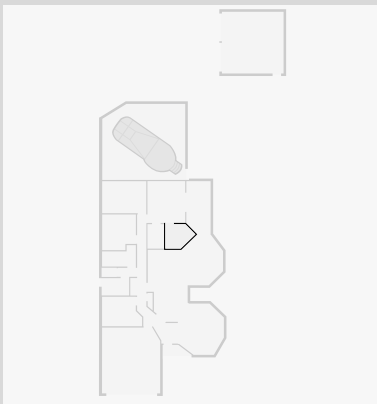
## Outdoor Area

Width: 2.36 m  
 Length: 5.11 m  
 Area: 11.56 m<sup>2</sup>  
 Perimeter: 14.35 m



## Bathroom

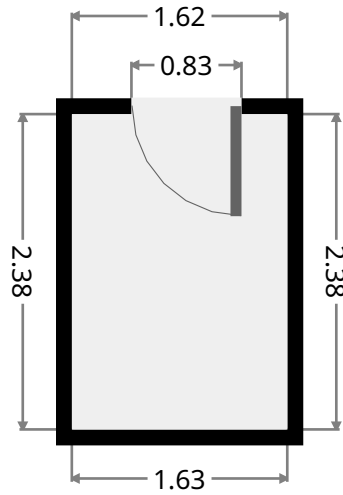
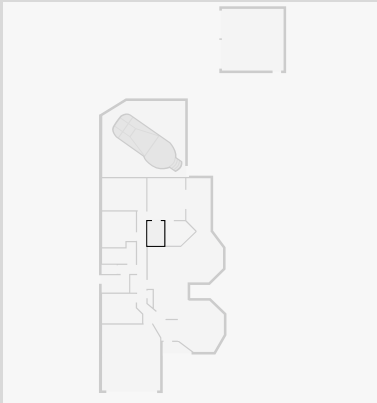
Width: 1.95 m  
 Length: 2.38 m  
 Area: 5.51 m<sup>2</sup>  
 Perimeter: 9.23 m



# 15 Mark Acton Close

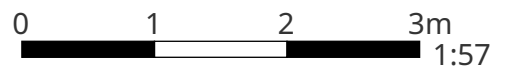
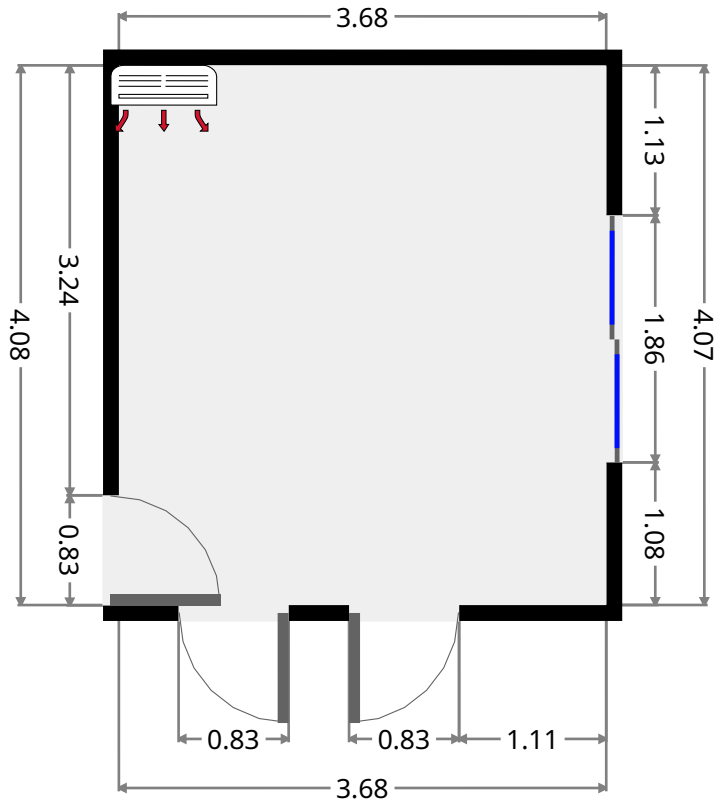
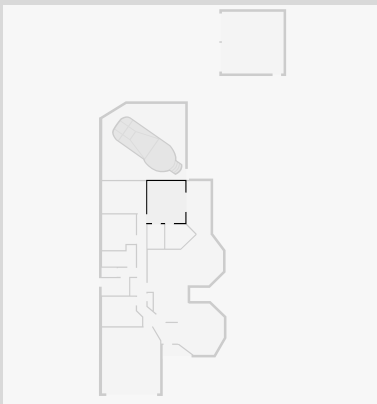
## Closet

Width: 1.62 m  
 Length: 2.38 m  
 Area: 3.86 m<sup>2</sup>  
 Perimeter: 8.01 m



## Master Bedroom

Width: 3.68 m  
 Length: 4.07 m  
 Area: 14.96 m<sup>2</sup>  
 Perimeter: 15.49 m

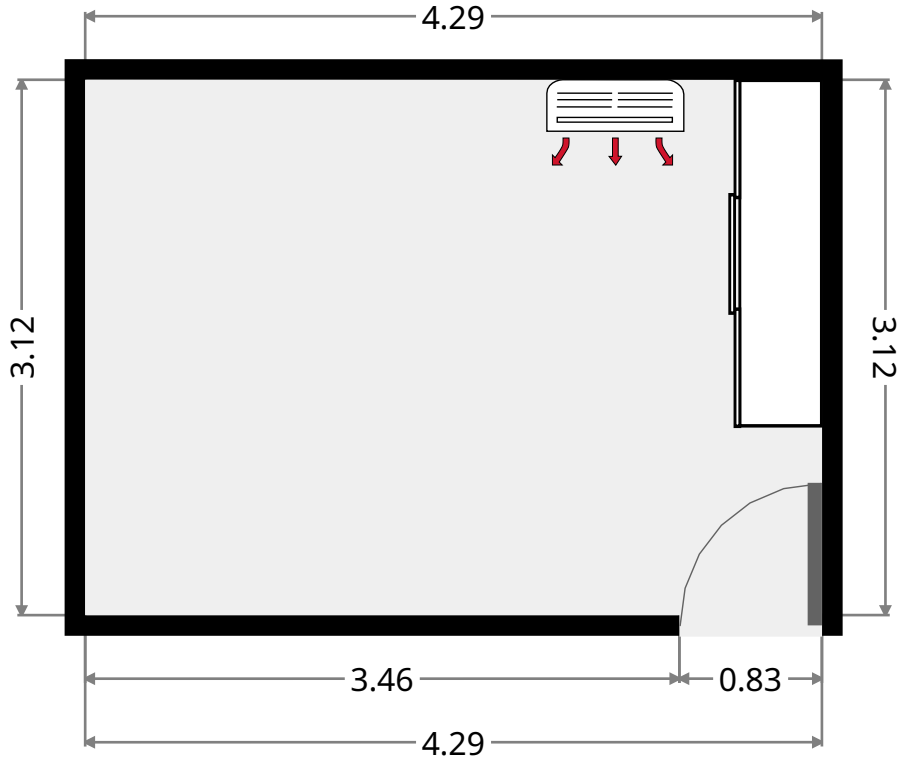
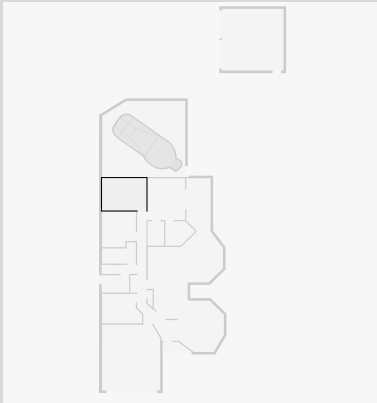


THIS FLOORPLAN IS PROVIDED WITHOUT WARRANTY OF ANY KIND. SENSOPIA DISCLAIMS ANY WARRANTY INCLUDING, WITHOUT LIMITATION, SATISFACTORY QUALITY OR ACCURACY OF DIMENSIONS.

# 15 Mark Acton Close

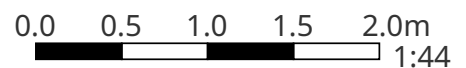
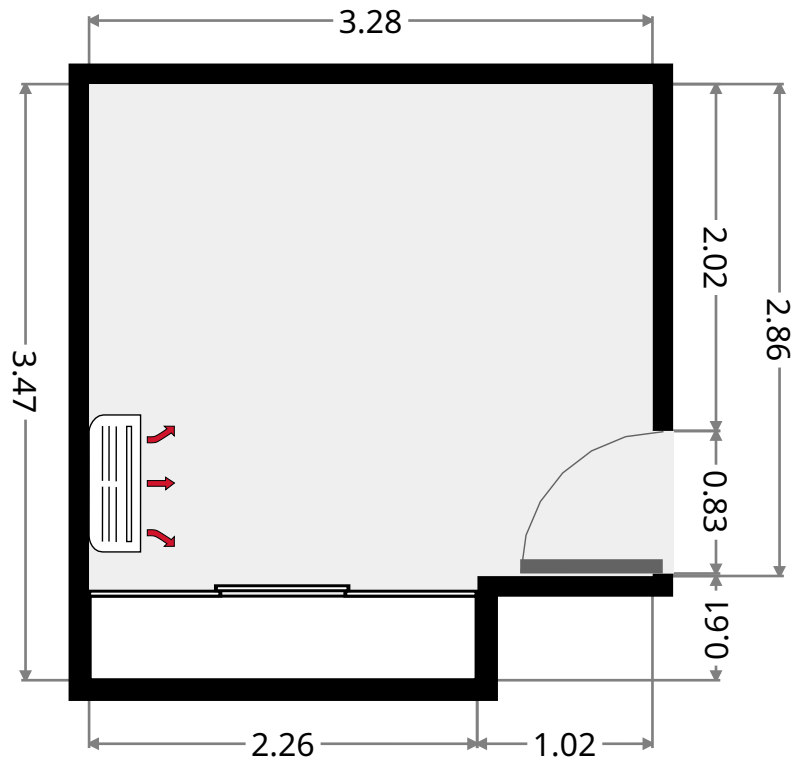
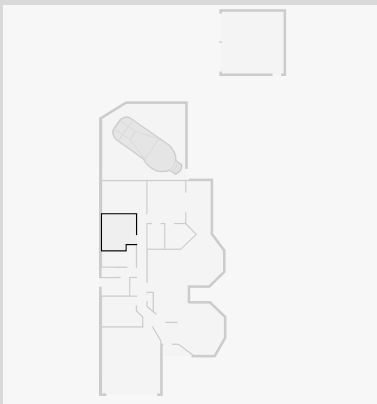
## Bedroom

Width: 3.12 m  
 Length: 4.29 m  
 Area: 13.37 m<sup>2</sup>  
 Perimeter: 14.81 m



## Bedroom

Width: 3.28 m  
 Length: 3.47 m  
 Area: 10.76 m<sup>2</sup>  
 Perimeter: 13.50 m

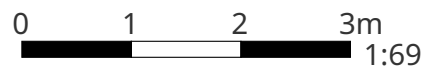
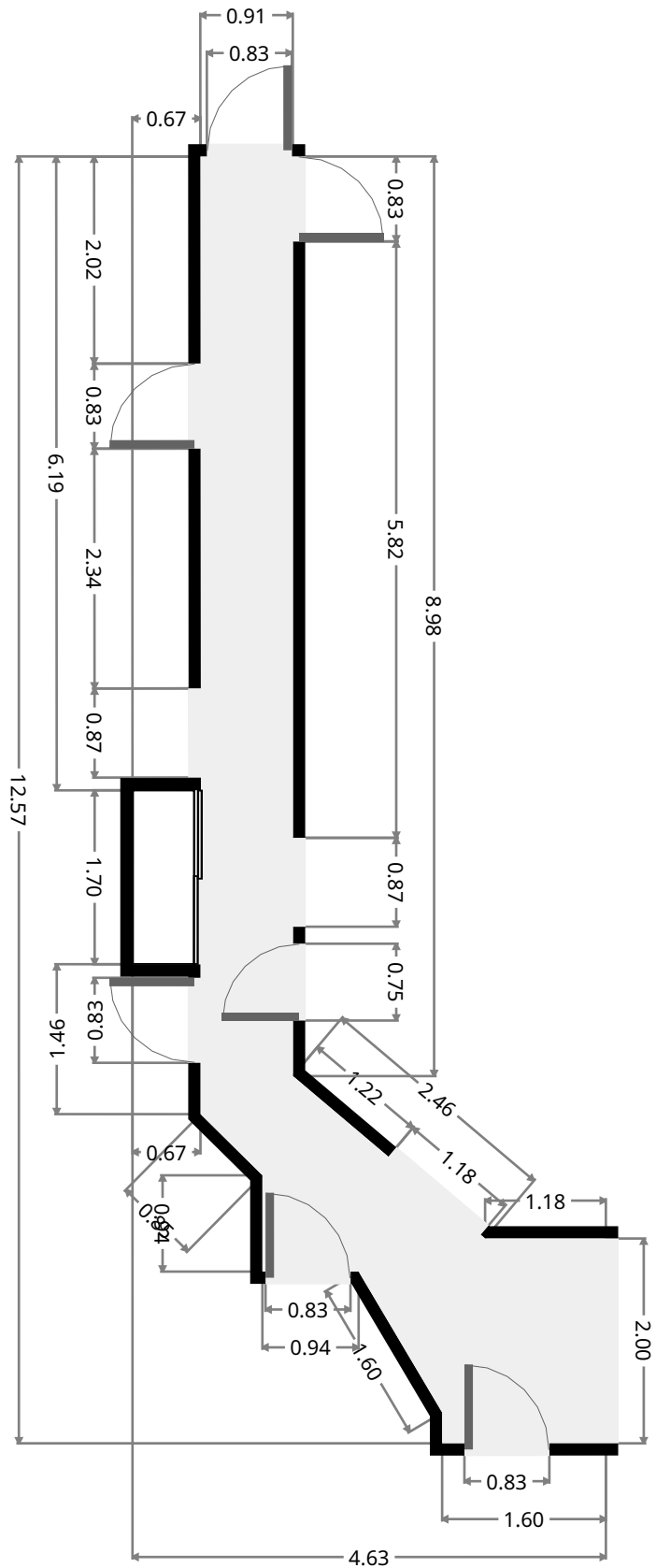
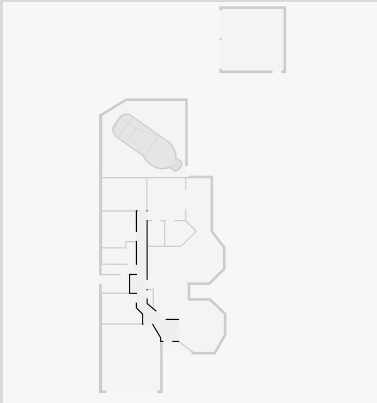


THIS FLOORPLAN IS PROVIDED WITHOUT WARRANTY OF ANY KIND. SENSOPIA DISCLAIMS ANY WARRANTY INCLUDING, WITHOUT LIMITATION, SATISFACTORY QUALITY OR ACCURACY OF DIMENSIONS.

# 15 Mark Acton Close

## Hall

Width: 4.63 m  
 Length: 12.57 m  
 Area: 15.92 m<sup>2</sup>  
 Perimeter: 32.44 m

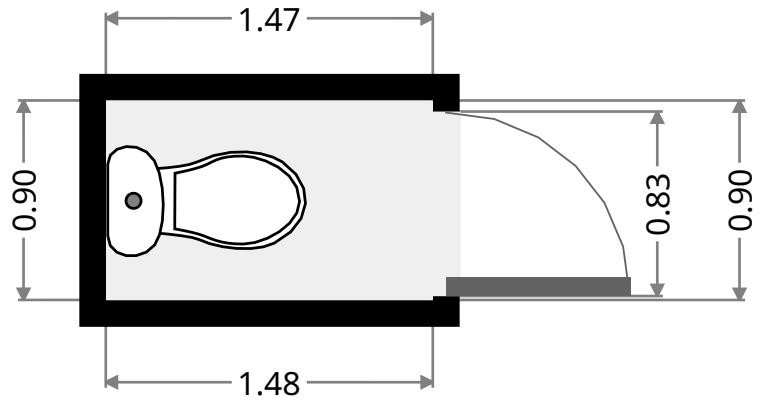
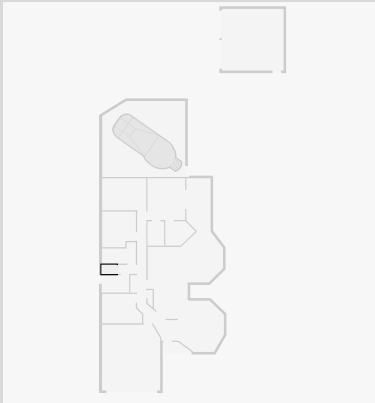


THIS FLOORPLAN IS PROVIDED WITHOUT WARRANTY OF ANY KIND. SENSOPIA DISCLAIMS ANY WARRANTY INCLUDING, WITHOUT LIMITATION, SATISFACTORY QUALITY OR ACCURACY OF DIMENSIONS.

# 15 Mark Acton Close

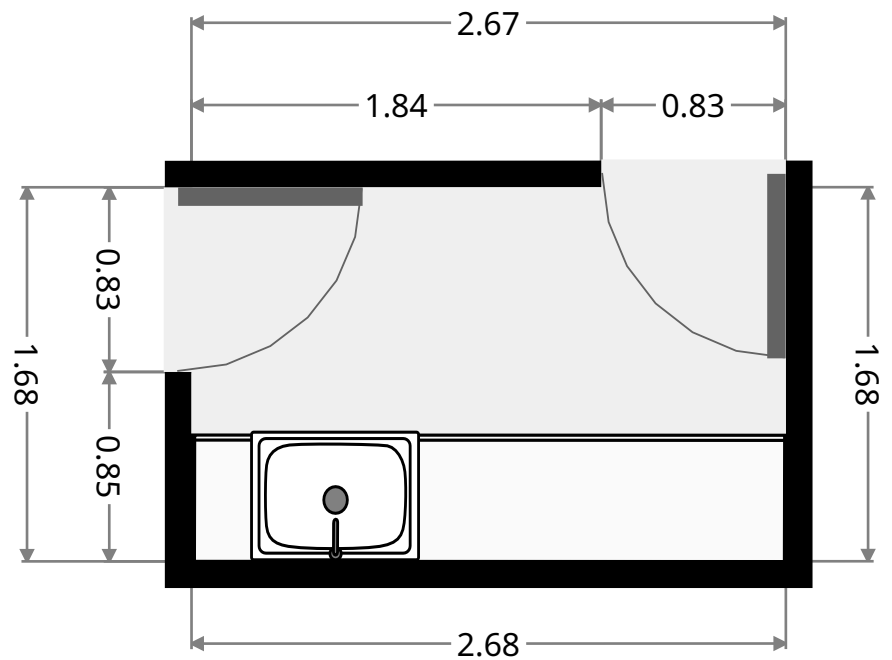
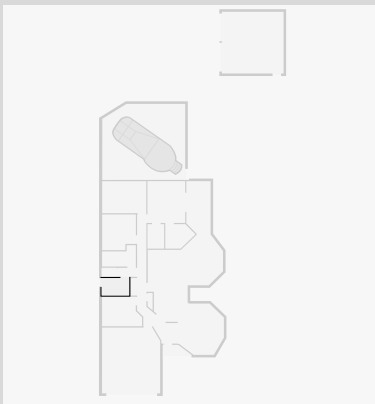
## Toilet

Width: 0.90 m  
 Length: 1.47 m  
 Area: 1.32 m<sup>2</sup>  
 Perimeter: 4.74 m



## Laundry Room

Width: 1.68 m  
 Length: 2.67 m  
 Area: 4.50 m<sup>2</sup>  
 Perimeter: 8.71 m

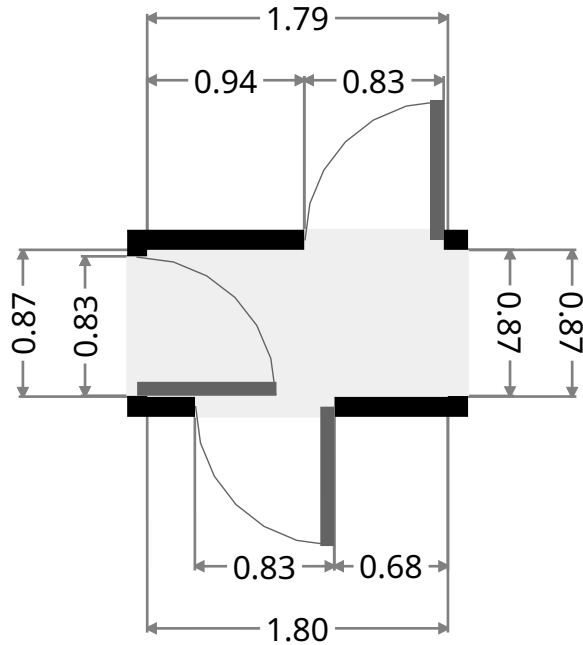
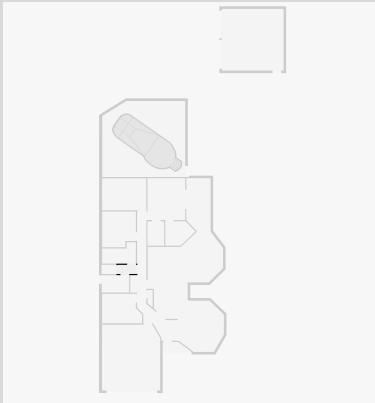




# 15 Mark Acton Close

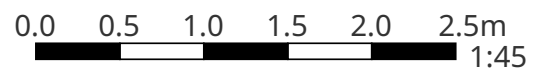
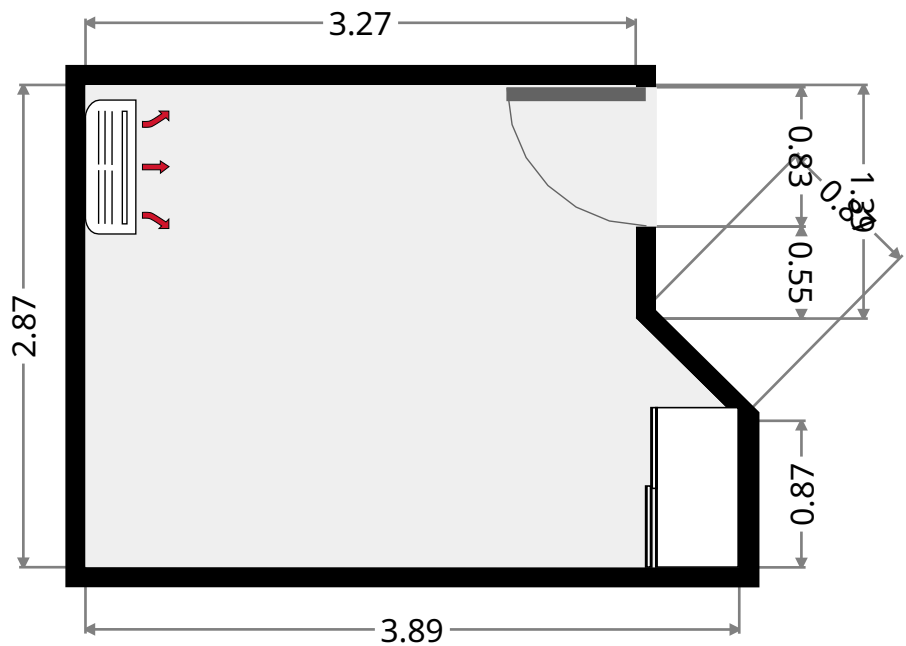
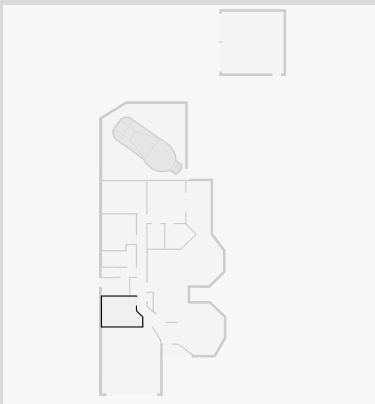
## Hall

Width: 0.87 m  
 Length: 1.79 m  
 Area: 1.56 m<sup>2</sup>  
 Perimeter: 5.33 m



## Bedroom

Width: 2.87 m  
 Length: 3.89 m  
 Area: 10.13 m<sup>2</sup>  
 Perimeter: 13.17 m

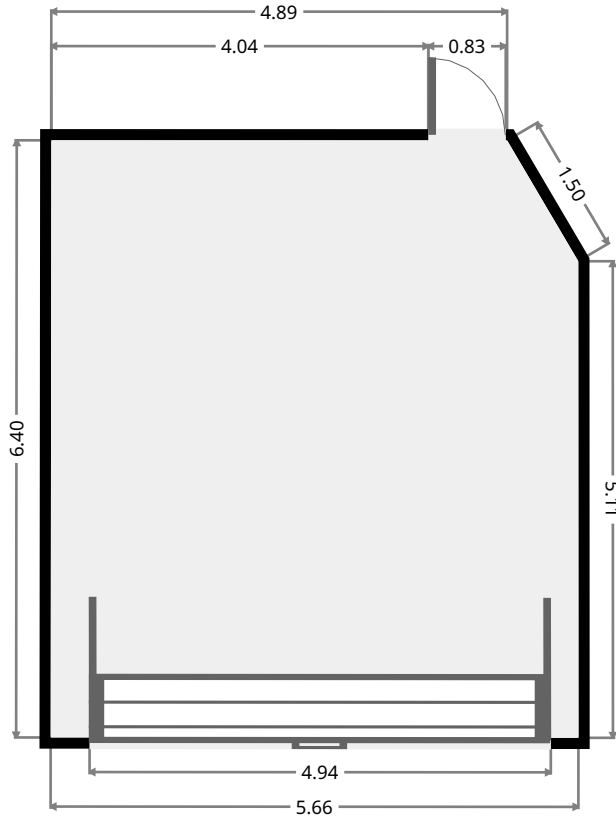
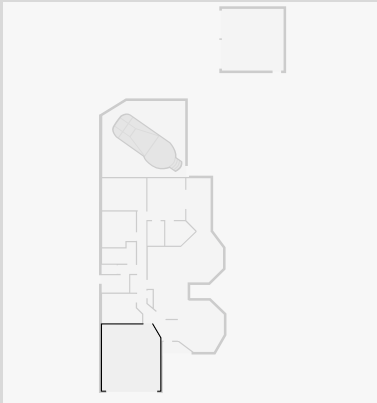


THIS FLOORPLAN IS PROVIDED WITHOUT WARRANTY OF ANY KIND. SENSOPIA DISCLAIMS ANY WARRANTY INCLUDING, WITHOUT LIMITATION, SATISFACTORY QUALITY OR ACCURACY OF DIMENSIONS.

# 15 Mark Acton Close

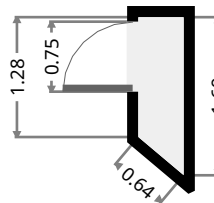
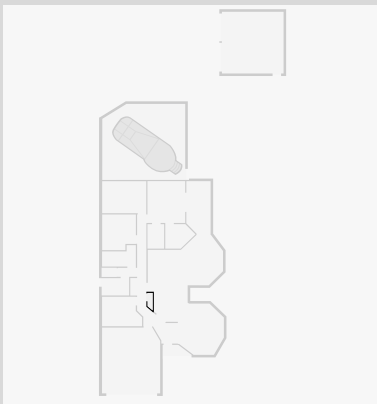
## Garage

Width: 5.66 m  
 Length: 6.40 m  
 Area: 35.69 m<sup>2</sup>  
 Perimeter: 23.55 m



## Closet

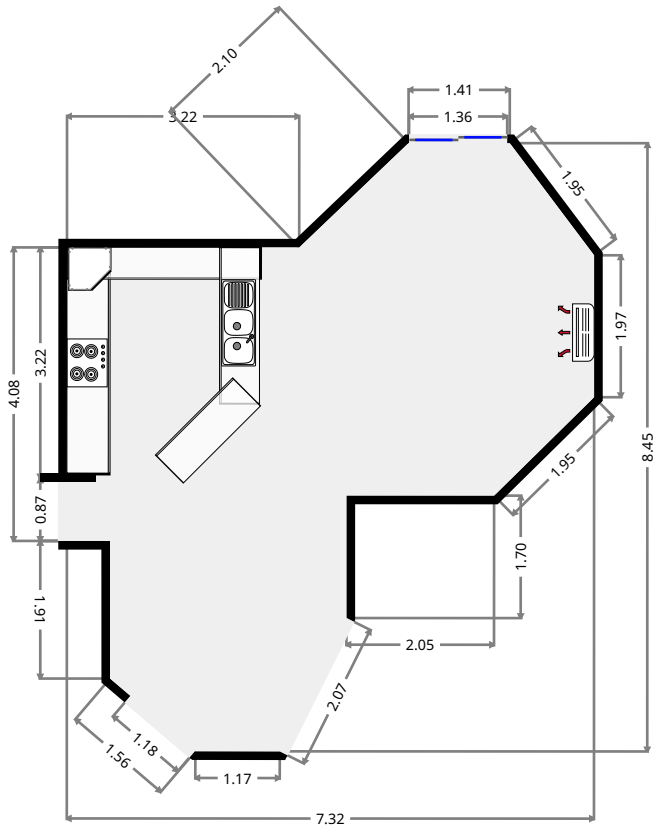
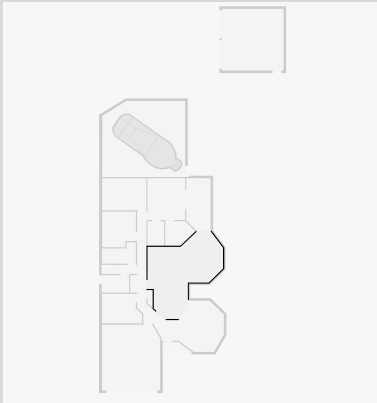
Width: 0.49 m  
 Length: 1.69 m  
 Area: 0.72 m<sup>2</sup>  
 Perimeter: 4.10 m



# 15 Mark Acton Close

## Kitchen/Living/Dining

Width: 7.32 m  
 Length: 8.45 m  
 Area: 38.82 m<sup>2</sup>  
 Perimeter: 27.75 m



## Living Room

Width: 2.07 m  
 Length: 4.55 m  
 Area: 18.36 m<sup>2</sup>  
 Perimeter: 15.76 m

