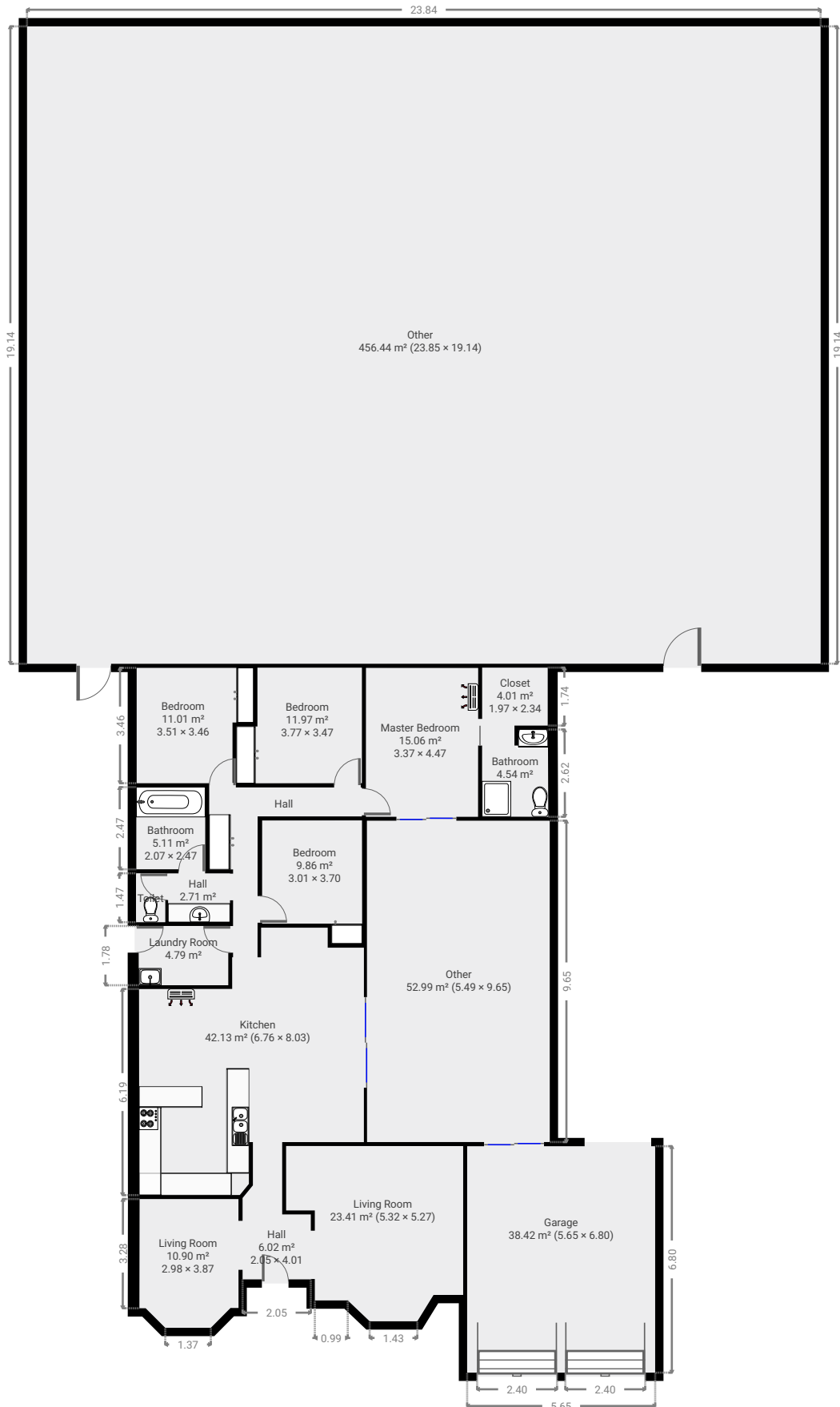


15 Jard Street

Created on
2021-09-14

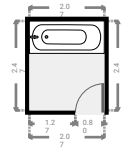
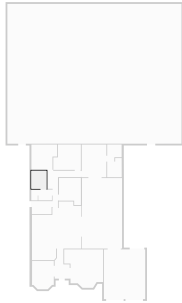
Floors
1

▼ Ground Floor



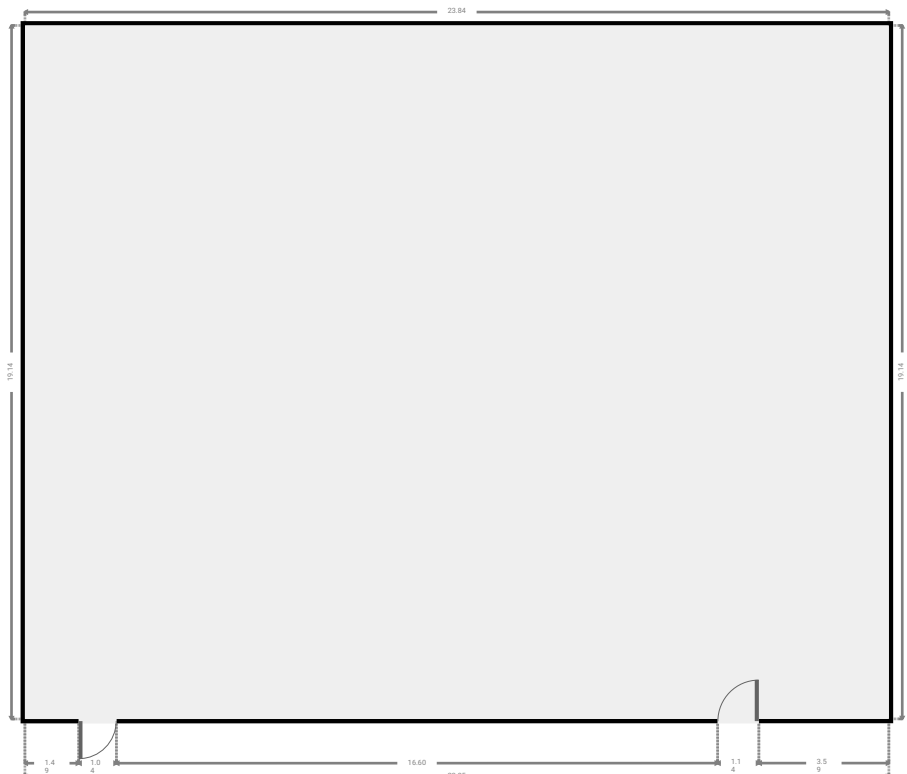
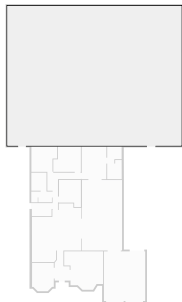
▼ Bathroom
Ground Floor

WIDTH: 2.07 m • LENGTH: 2.47 m
AREA: 5.11 m² • PERIMETER: 9.07 m



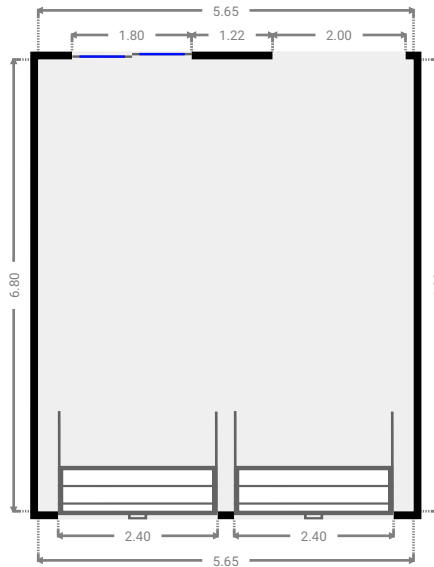
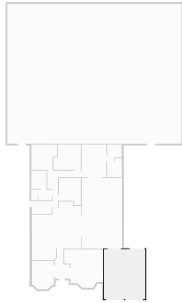
▼ Other
Ground Floor

WIDTH: 23.85 m • LENGTH: 19.14 m
AREA: 456.44 m² • PERIMETER: 85.97 m



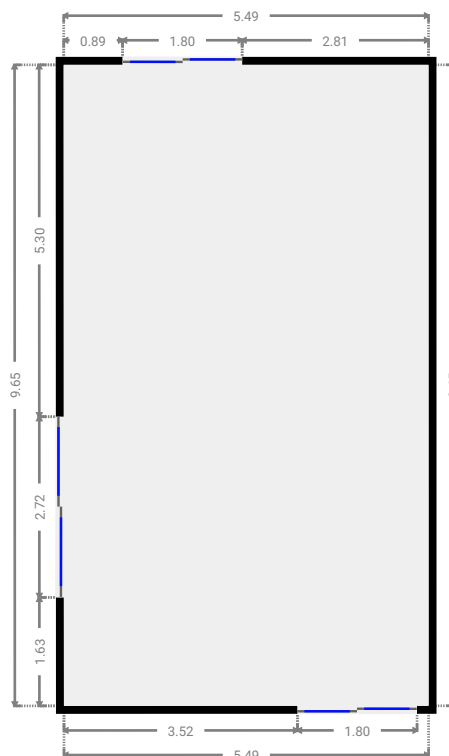
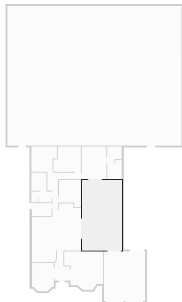
▼ **Garage**
Ground Floor

WIDTH: 5.65 m • LENGTH: 6.80 m
AREA: 38.42 m² • PERIMETER: 24.90 m



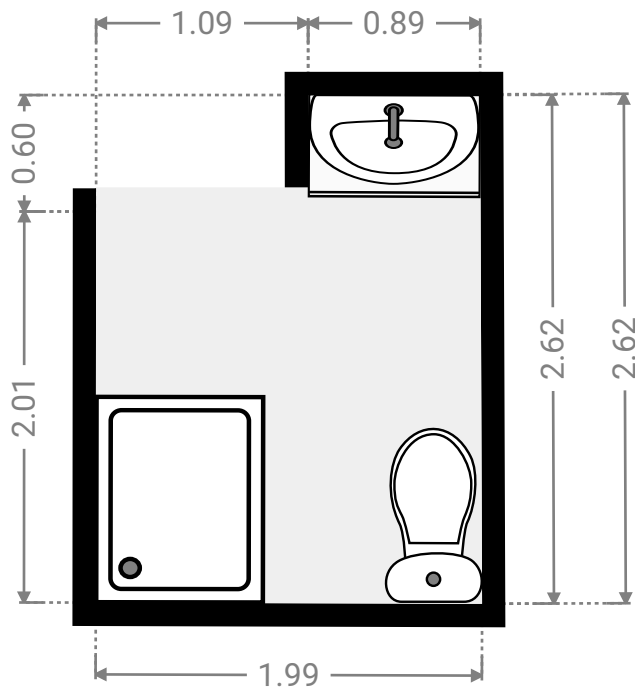
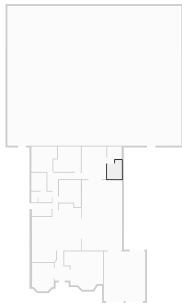
▼ **Other**
Ground Floor

WIDTH: 5.49 m • LENGTH: 9.65 m
AREA: 52.99 m² • PERIMETER: 30.28 m



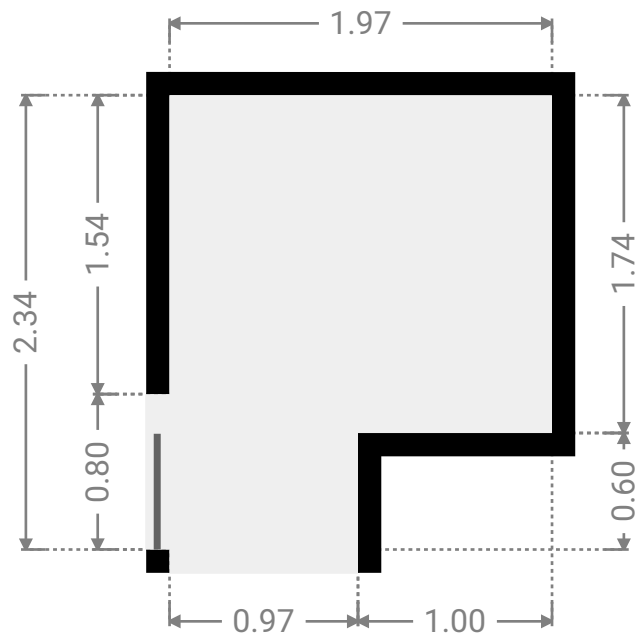
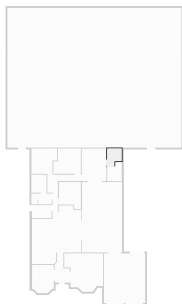
▼ **Bathroom**
Ground Floor

WIDTH: 1.99 m • LENGTH: 2.62 m
AREA: 4.54 m² • PERIMETER: 9.20 m



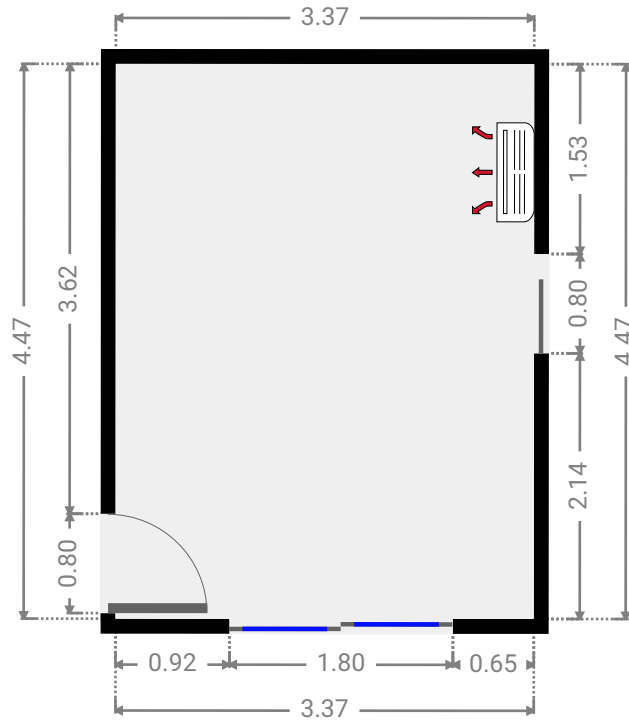
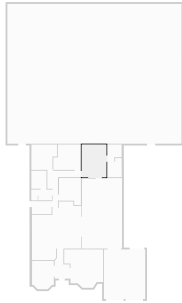
▼ **Closet**
Ground Floor

WIDTH: 1.97 m • LENGTH: 2.34 m
AREA: 4.01 m² • PERIMETER: 8.62 m



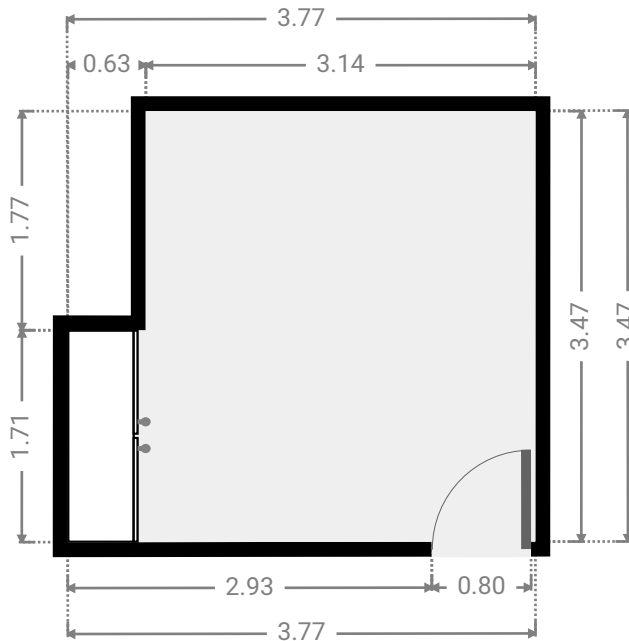
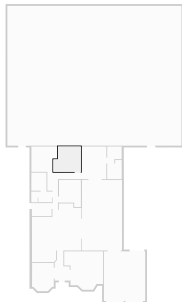
▼ **Master Bedroom**
Ground Floor

WIDTH: 3.37 m • LENGTH: 4.47 m
AREA: 15.06 m² • PERIMETER: 15.68 m



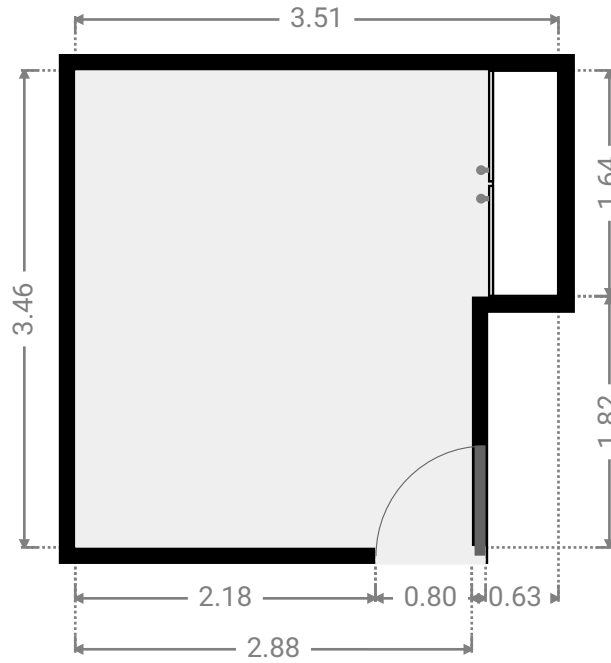
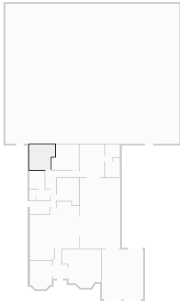
▼ **Bedroom**
Ground Floor

WIDTH: 3.77 m • LENGTH: 3.47 m
AREA: 11.97 m² • PERIMETER: 14.48 m



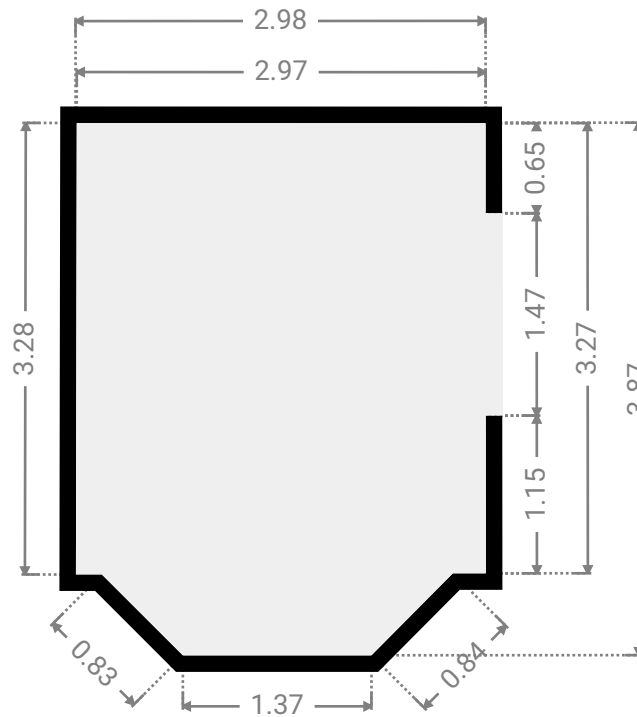
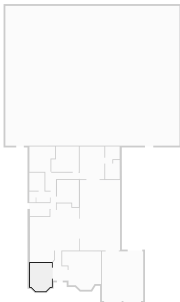
▼ **Bedroom**
Ground Floor

WIDTH: 3.51 m • LENGTH: 3.46 m
AREA: 11.01 m² • PERIMETER: 13.95 m



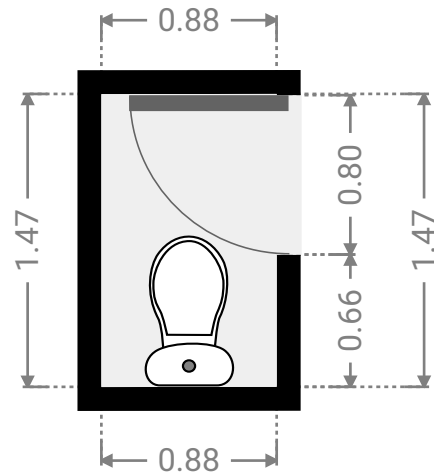
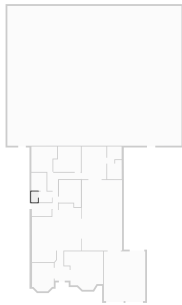
▼ **Living Room**
Ground Floor

WIDTH: 2.98 m • LENGTH: 3.87 m
AREA: 10.90 m² • PERIMETER: 12.99 m



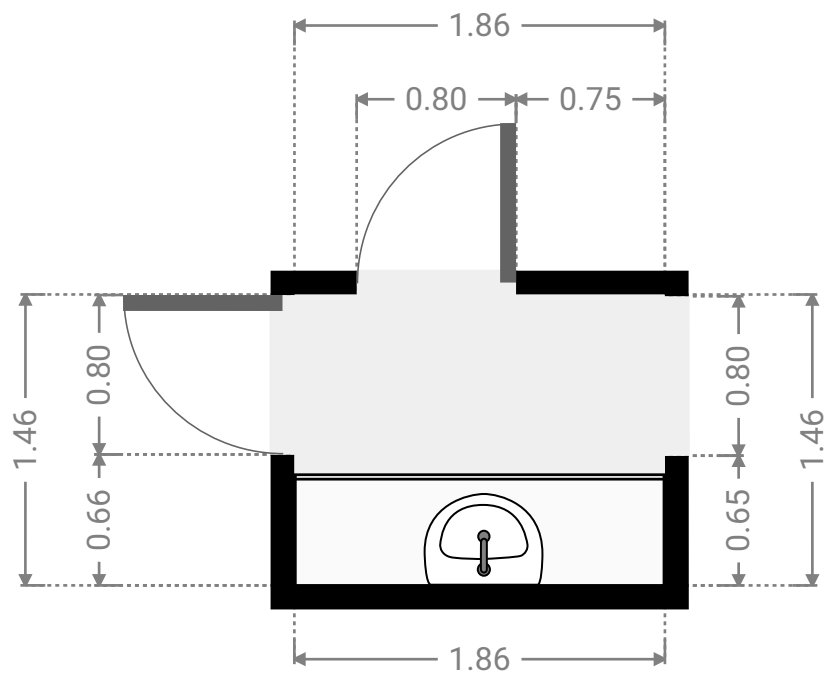
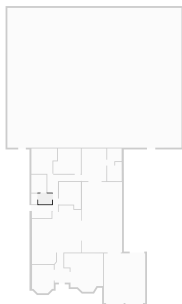
▼ **Toilet**
Ground Floor

WIDTH: 0.88 m • LENGTH: 1.47 m
AREA: 1.29 m² • PERIMETER: 4.70 m



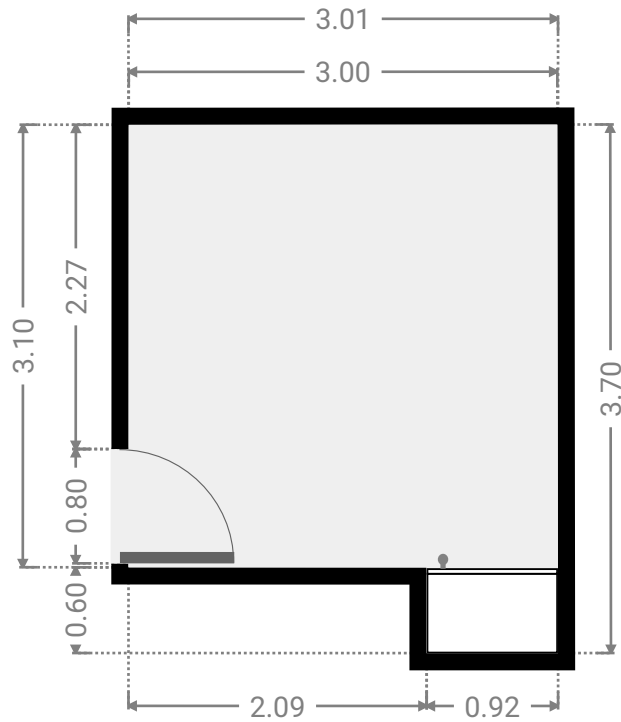
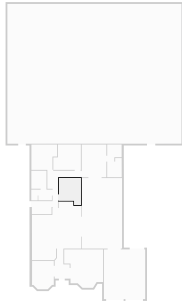
▼ **Hall**
Ground Floor

WIDTH: 1.86 m • LENGTH: 1.46 m
AREA: 2.71 m² • PERIMETER: 6.64 m



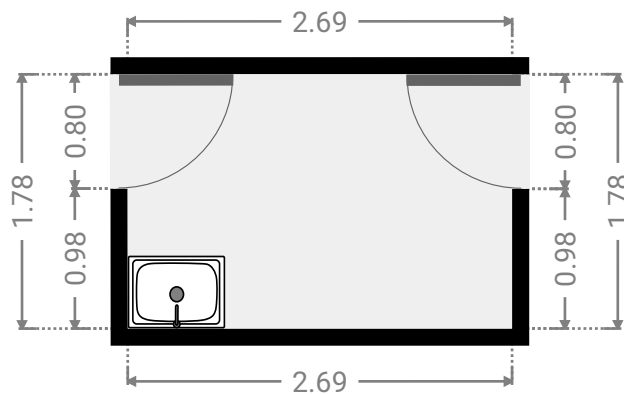
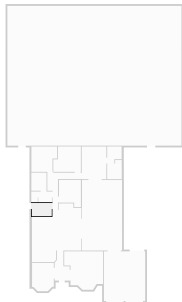
▼ **Bedroom**
Ground Floor

WIDTH: 3.01 m • LENGTH: 3.70 m
AREA: 9.86 m² • PERIMETER: 13.40 m



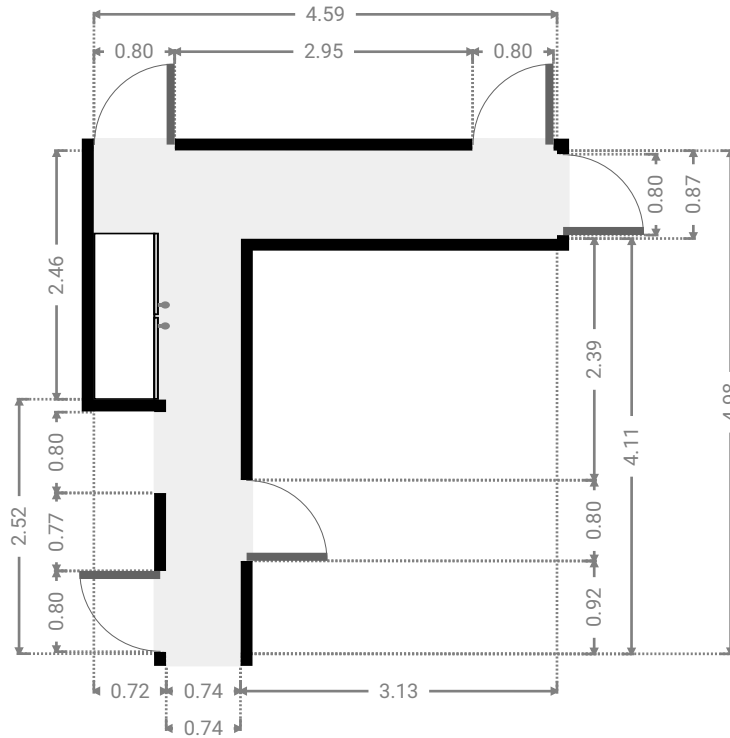
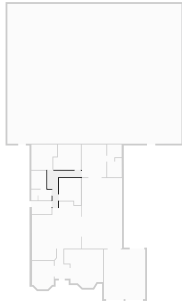
▼ **Laundry Room**
Ground Floor

WIDTH: 2.69 m • LENGTH: 1.78 m
AREA: 4.79 m² • PERIMETER: 8.94 m



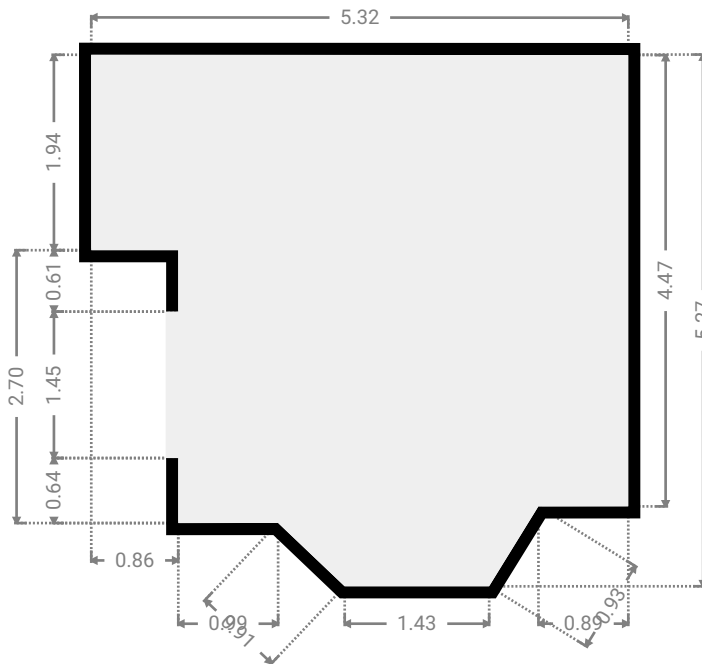
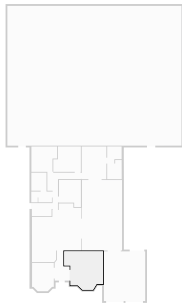
▼ Hall
Ground Floor

WIDTH: 4.59 m • LENGTH: 4.98 m
AREA: 8.16 m² • PERIMETER: 19.14 m



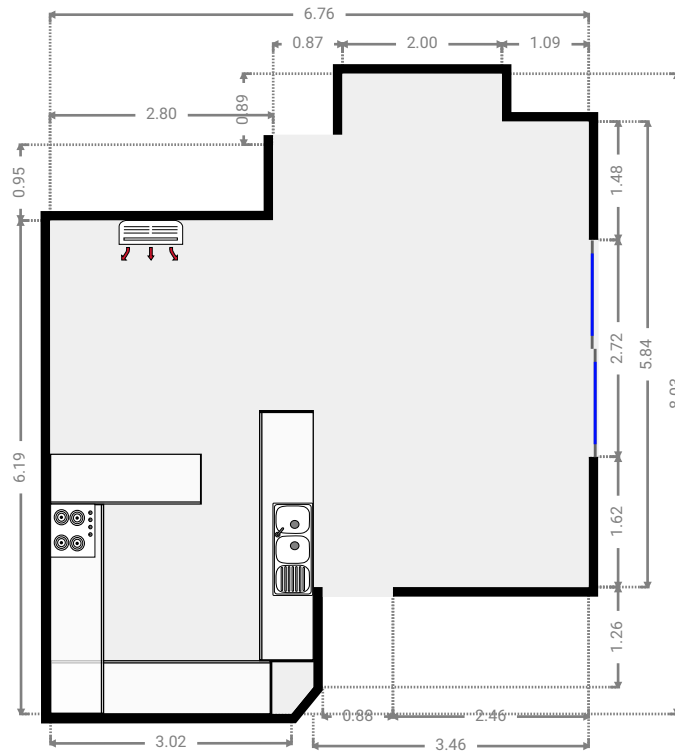
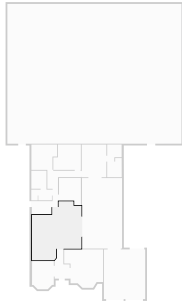
▼ Living Room
Ground Floor

WIDTH: 5.32 m • LENGTH: 5.27 m
AREA: 23.41 m² • PERIMETER: 20.44 m



▼ Kitchen
Ground Floor

WIDTH: 6.76 m • LENGTH: 8.03 m
AREA: 42.13 m² • PERIMETER: 29.39 m



▼ Hall
Ground Floor

WIDTH: 2.05 m • LENGTH: 4.01 m
AREA: 6.02 m² • PERIMETER: 11.92 m

