

146 Housden Street

SUBMITTED BY

Ray White Rockhampton Casey
stockers@cqoz.com

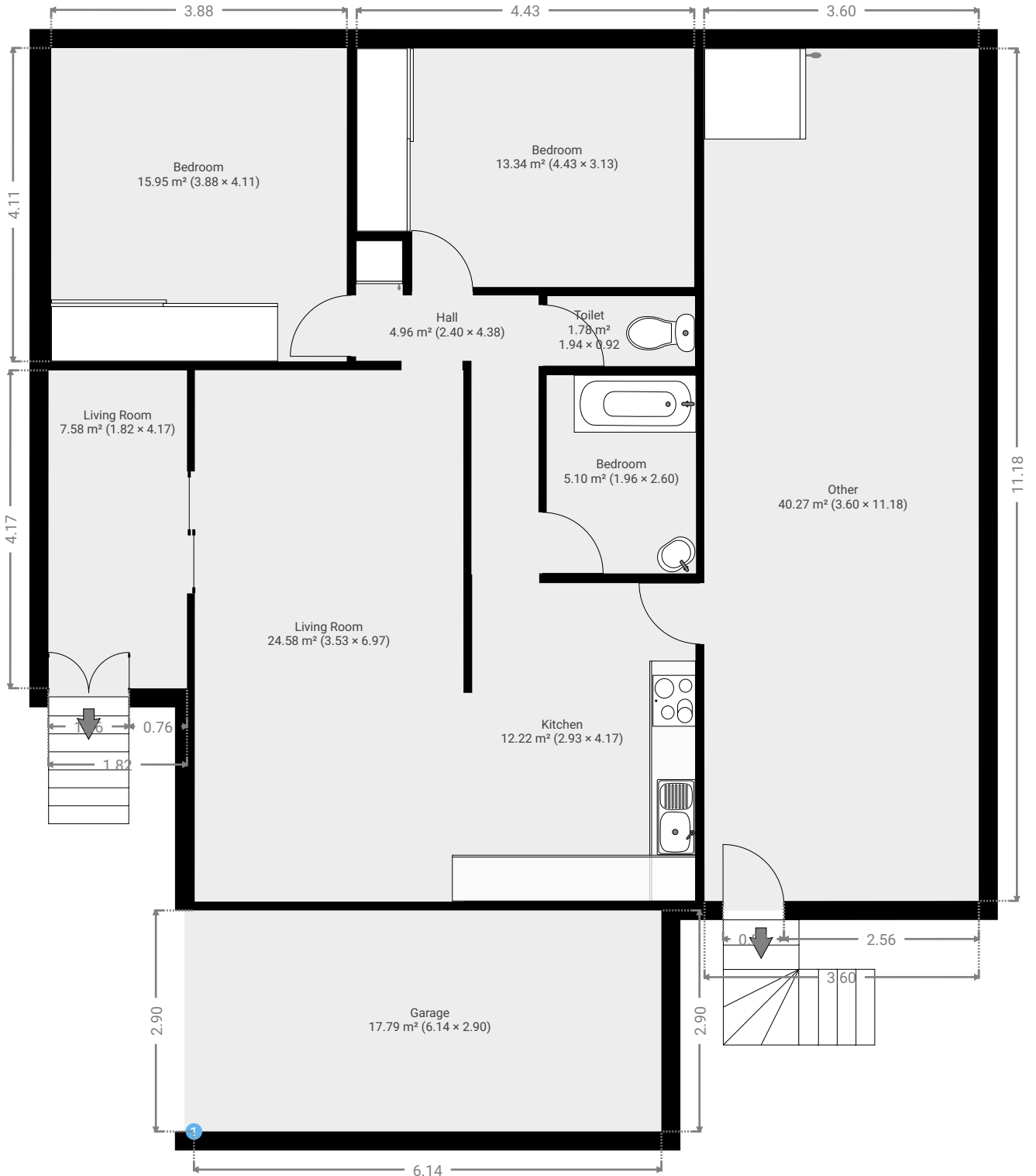
CREATED ON

2022-11-02

Floors

1

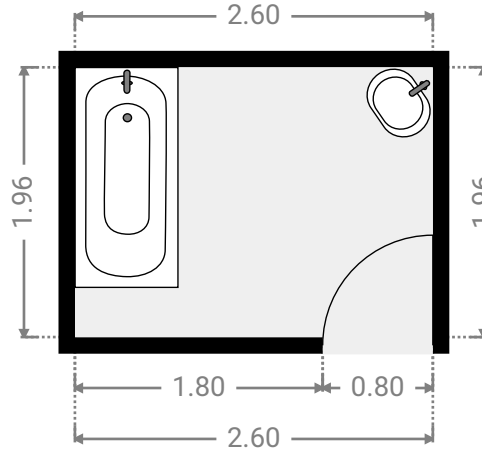
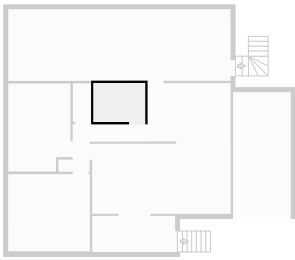
▼ Ground Floor



FLOORS: 1

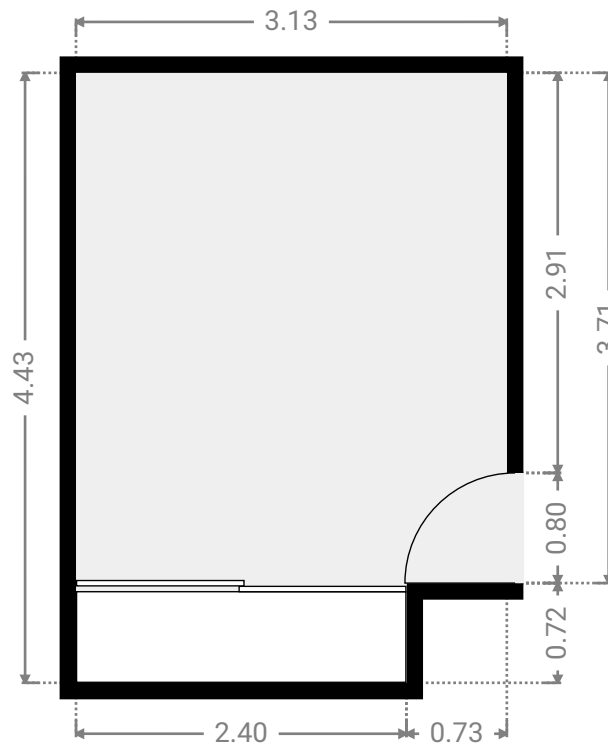
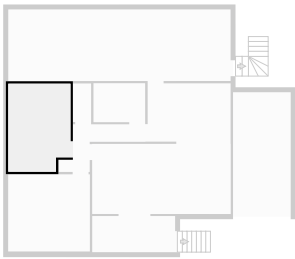
▼ **Bedroom**
Ground Floor

WIDTH: 2.60 m • LENGTH: 1.96 m
AREA: 5.10 m² • PERIMETER: 9.12 m



▼ **Bedroom**
Ground Floor

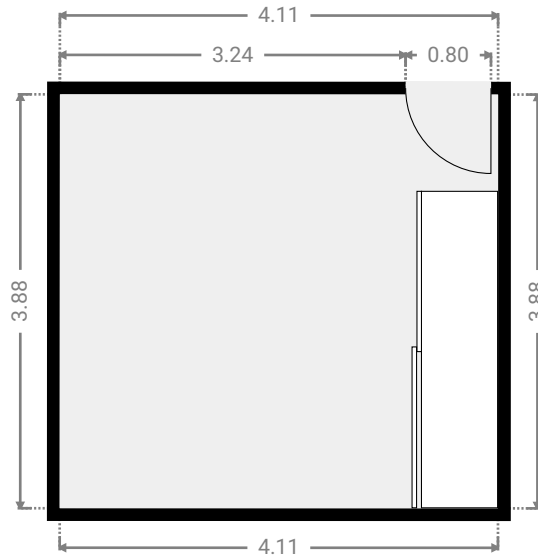
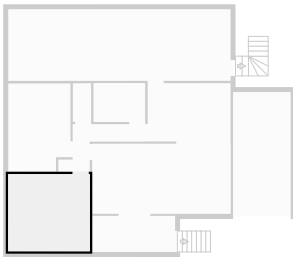
WIDTH: 3.13 m • LENGTH: 4.43 m
AREA: 13.34 m² • PERIMETER: 15.12 m



FLOORS: 1

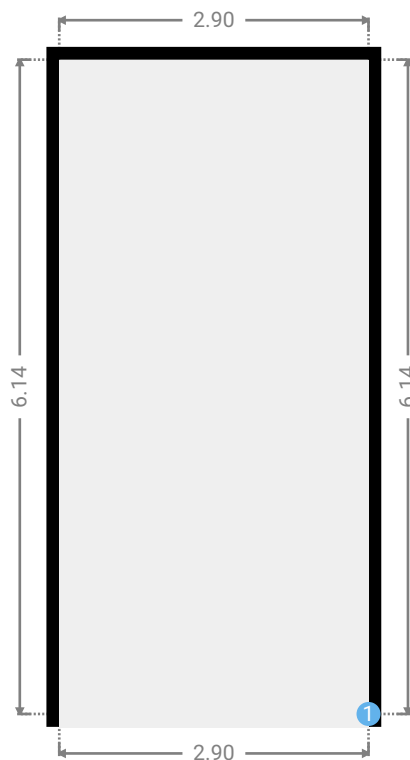
▼ **Bedroom**
Ground Floor

WIDTH: 4.11 m • LENGTH: 3.88 m
AREA: 15.95 m² • PERIMETER: 15.98 m



▼ **Garage**
Ground Floor

WIDTH: 2.90 m • LENGTH: 6.14 m
AREA: 17.79 m² • PERIMETER: 18.07 m



▼ Garage/Ground Floor

1 OPENING

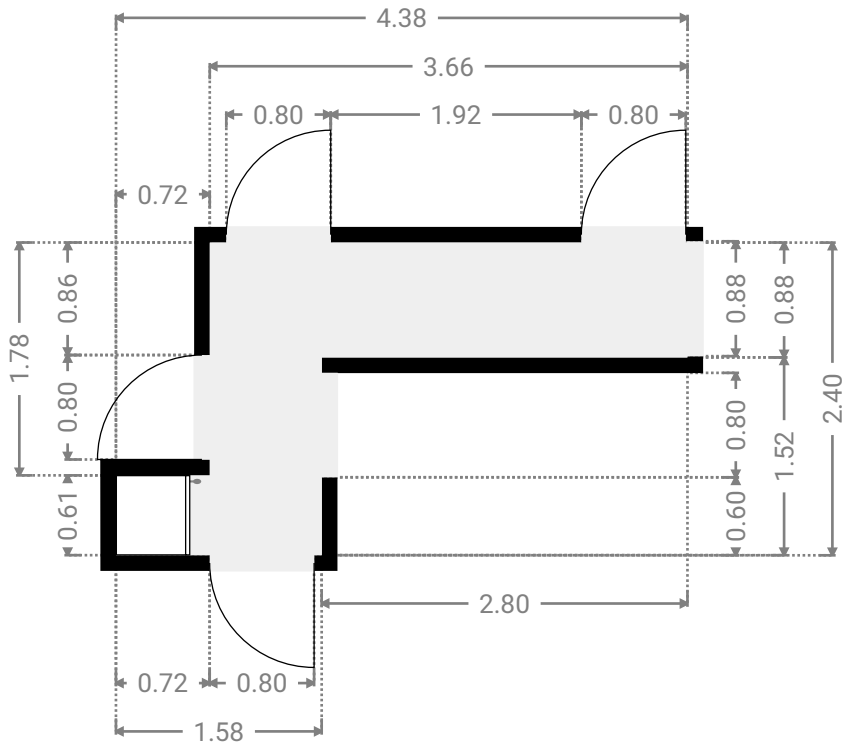
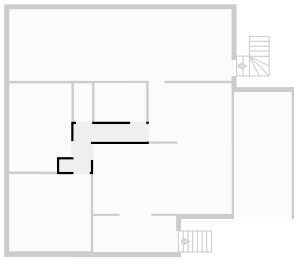
Height
0.00 m



FLOORS: 1

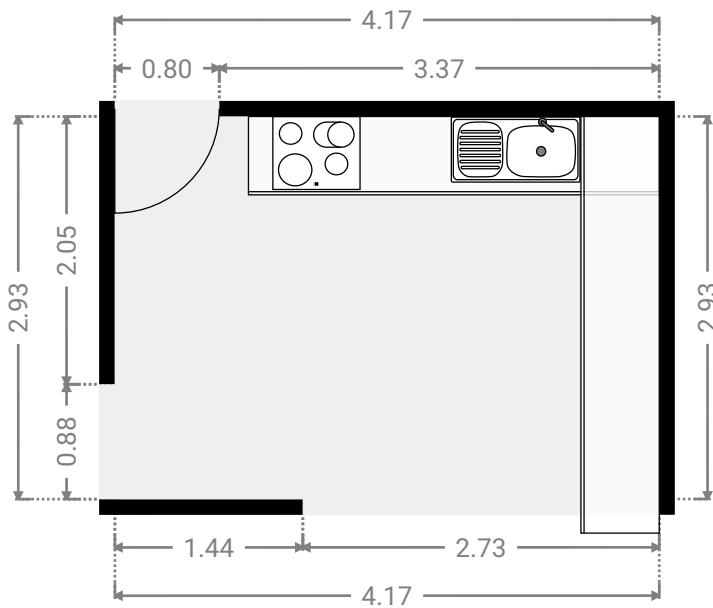
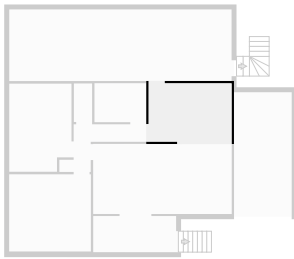
▼ **Hall**
Ground Floor

WIDTH: 4.38 m • LENGTH: 2.40 m
AREA: 4.96 m² • PERIMETER: 13.55 m



▼ **Kitchen**
Ground Floor

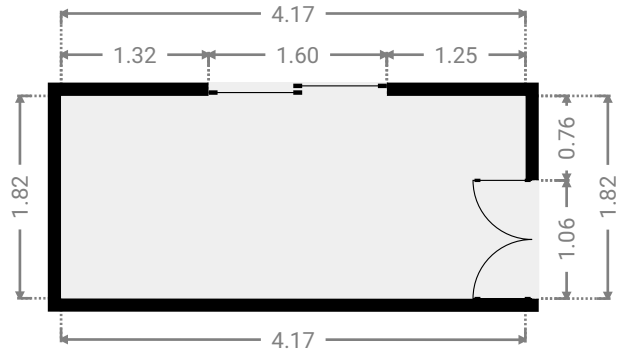
WIDTH: 4.17 m • LENGTH: 2.93 m
AREA: 12.22 m² • PERIMETER: 14.20 m



FLOORS: 1

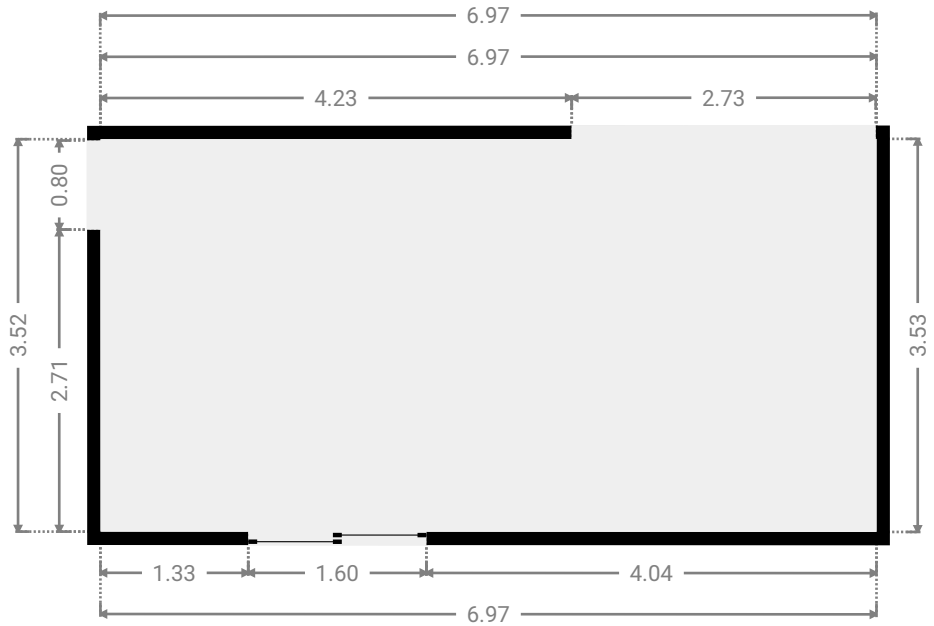
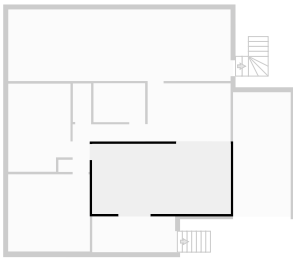
▼ Living Room
Ground Floor

WIDTH: 4.17 m • LENGTH: 1.82 m
AREA: 7.58 m² • PERIMETER: 11.98 m



▼ Living Room
Ground Floor

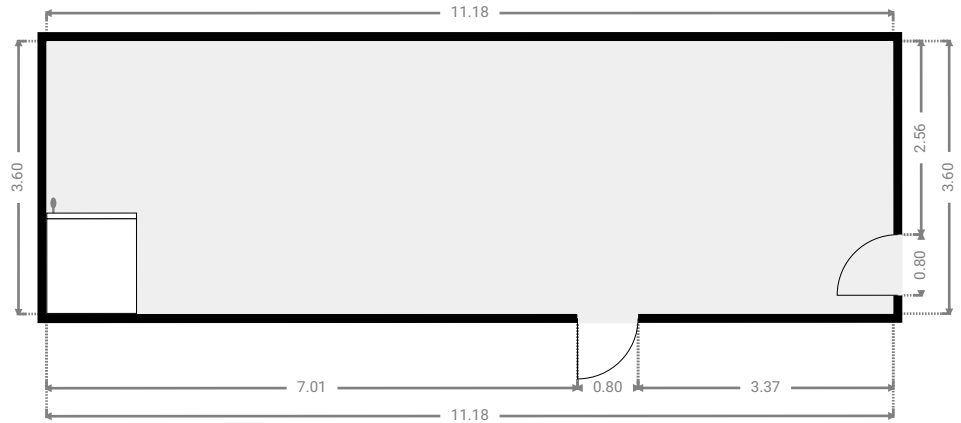
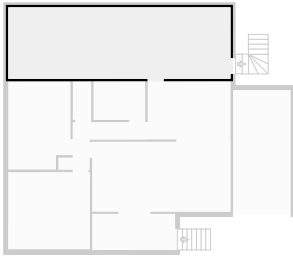
WIDTH: 6.97 m • LENGTH: 3.53 m
AREA: 24.58 m² • PERIMETER: 20.99 m



FLOORS: 1

▼ **Other**
Ground Floor

WIDTH: 11.18 m • LENGTH: 3.60 m
AREA: 40.27 m² • PERIMETER: 29.57 m



▼ **Toilet**
Ground Floor

WIDTH: 0.92 m • LENGTH: 1.94 m
AREA: 1.78 m² • PERIMETER: 5.71 m

