

# 145 Hyde Street

**SUBMITTED BY**

Ray White Rockhampton Casey  
stockers@cqoz.com

---

**CREATED ON**

2019-06-11

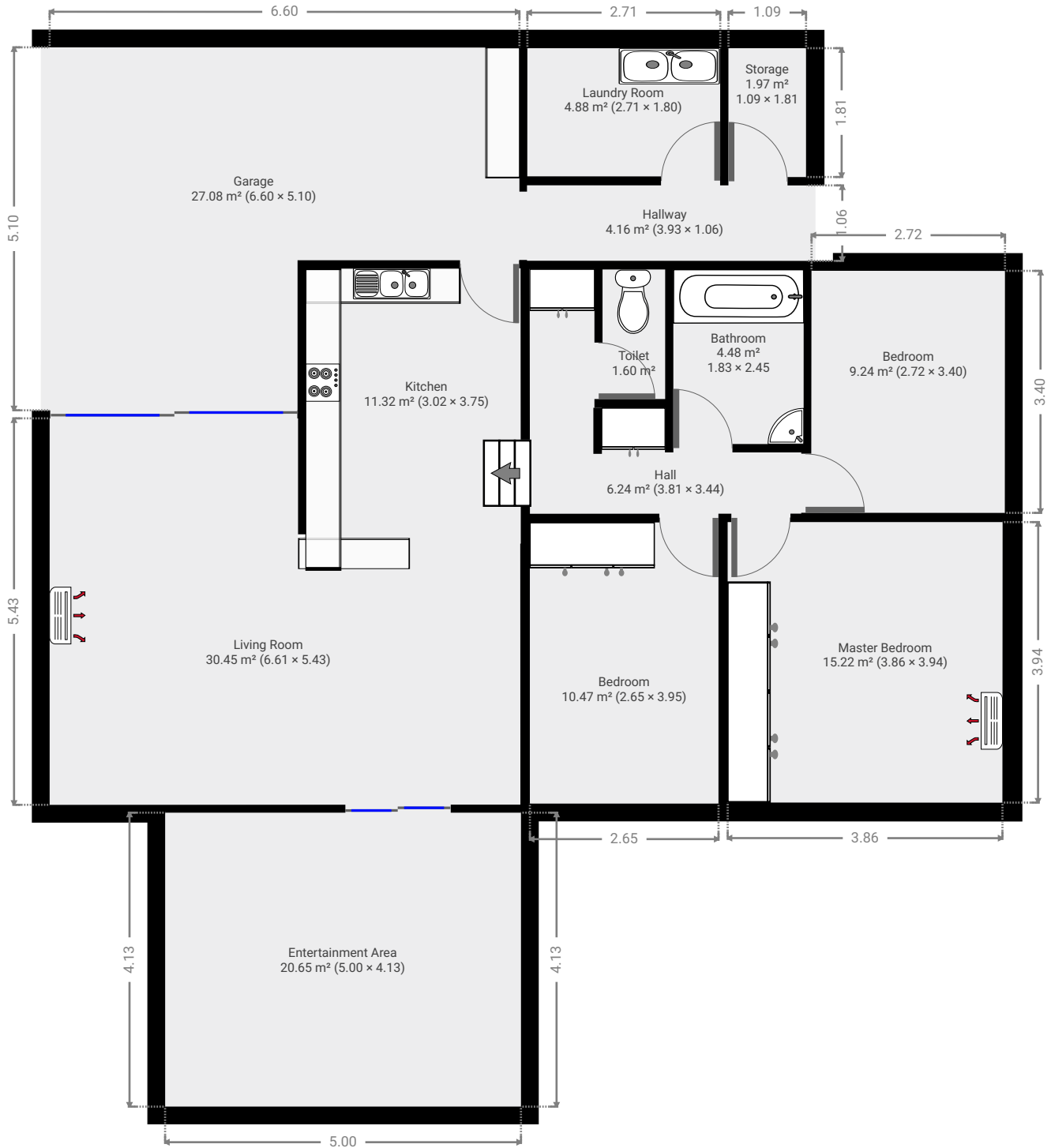
---

**Floors**

1

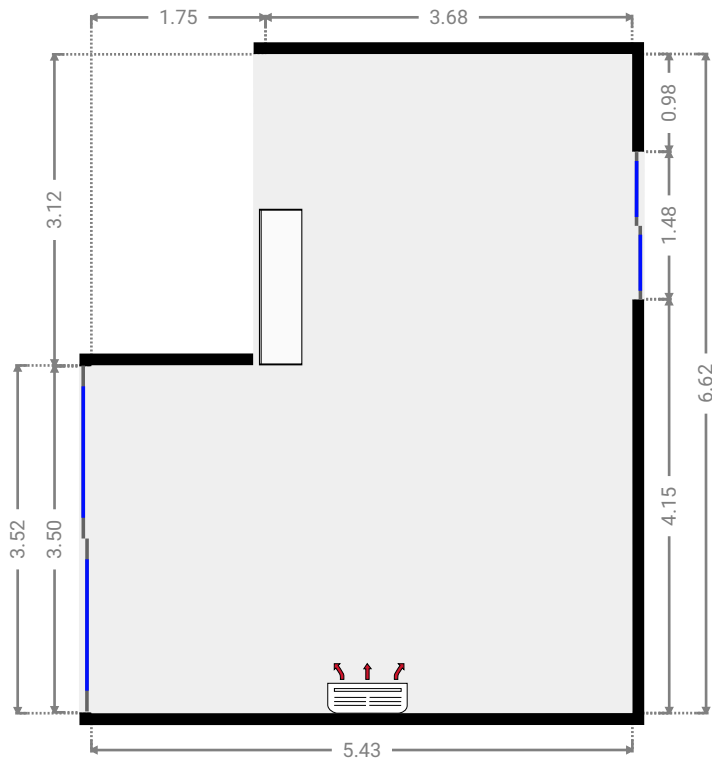
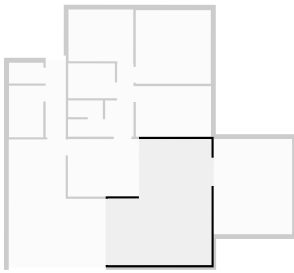
---

▼ Ground Floor



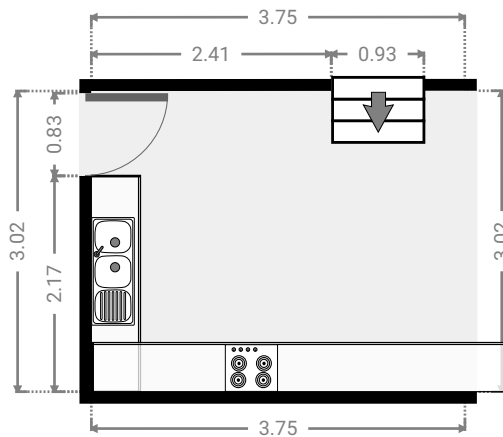
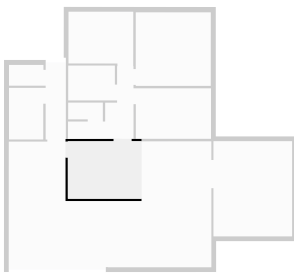
▼ **Living Room**  
Ground Floor

WIDTH: 5.43 m • LENGTH: 6.61 m  
AREA: 30.45 m<sup>2</sup> • PERIMETER: 24.09 m



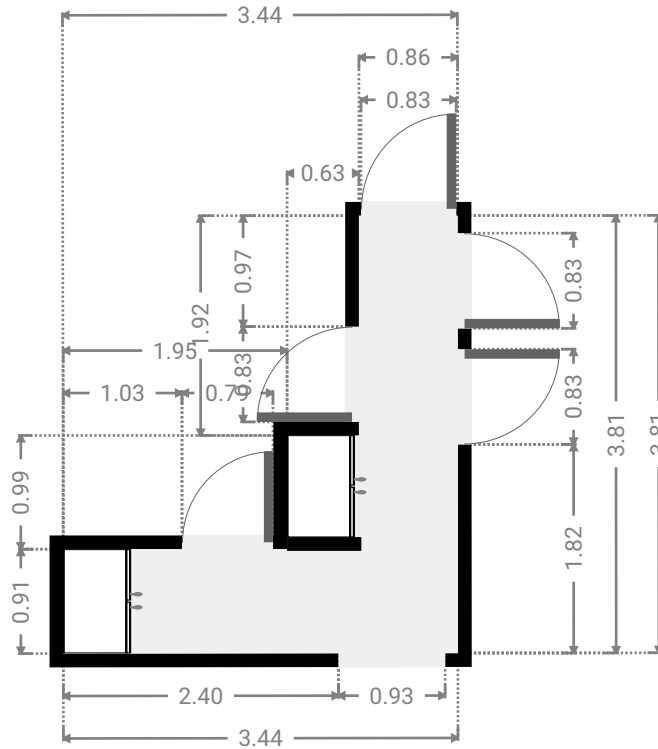
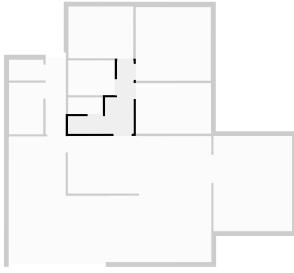
▼ **Kitchen**  
Ground Floor

WIDTH: 3.75 m • LENGTH: 3.02 m  
AREA: 11.32 m<sup>2</sup> • PERIMETER: 13.54 m



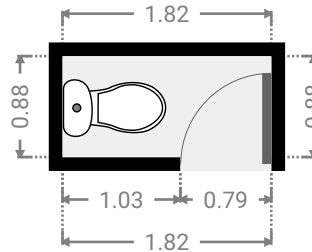
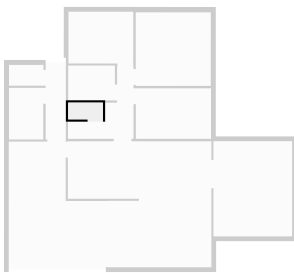
▼ **Hall**  
Ground Floor

WIDTH: 3.44 m • LENGTH: 3.81 m  
AREA: 6.24 m<sup>2</sup> • PERIMETER: 14.51 m



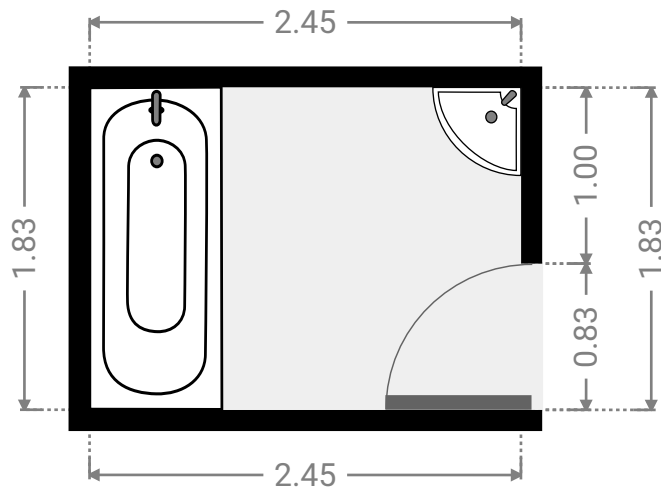
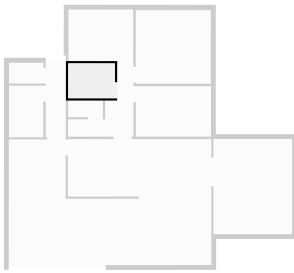
▼ **Toilet**  
Ground Floor

WIDTH: 1.82 m • LENGTH: 0.88 m  
AREA: 1.60 m<sup>2</sup> • PERIMETER: 5.40 m



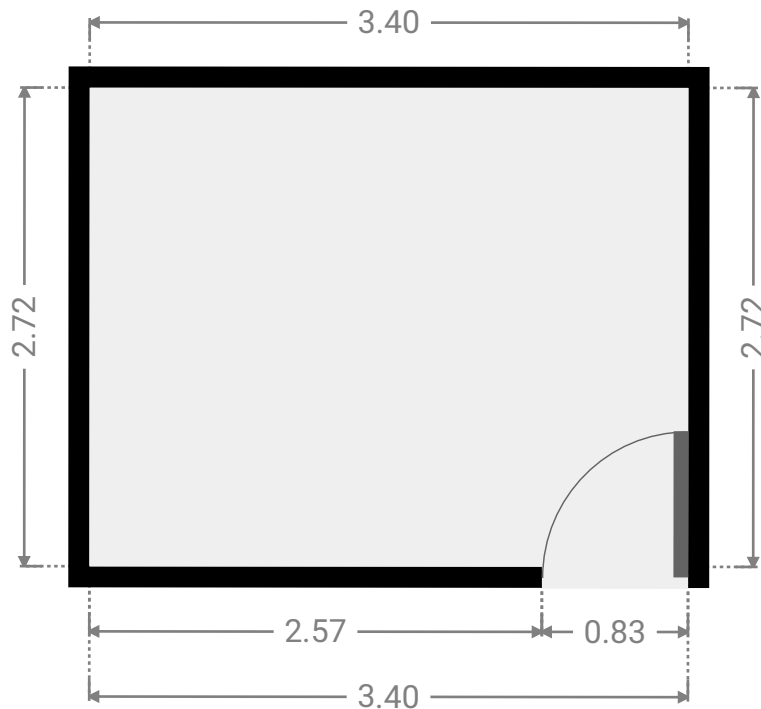
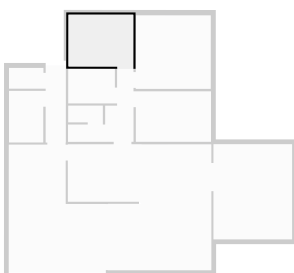
▼ **Bathroom**  
Ground Floor

WIDTH: 2.45 m • LENGTH: 1.83 m  
AREA: 4.48 m<sup>2</sup> • PERIMETER: 8.56 m



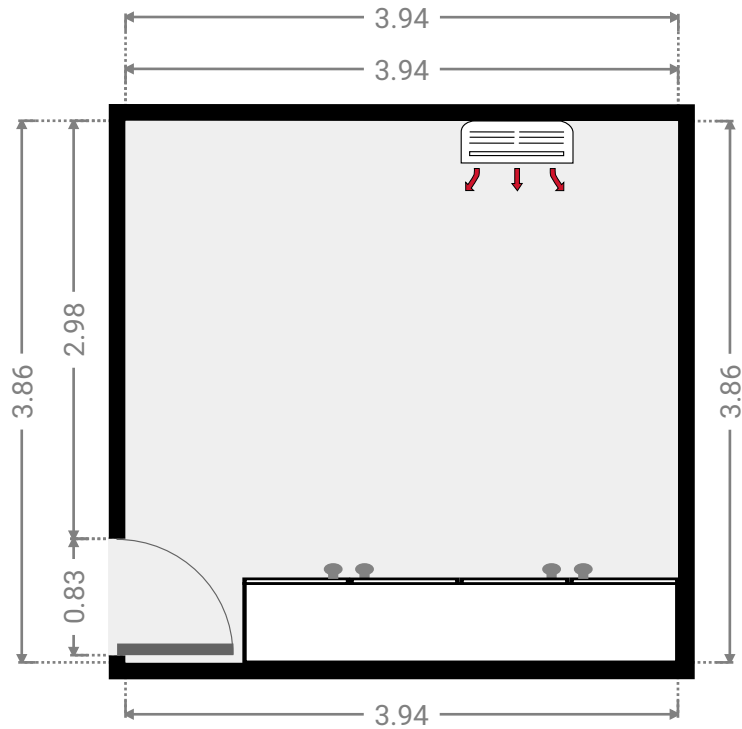
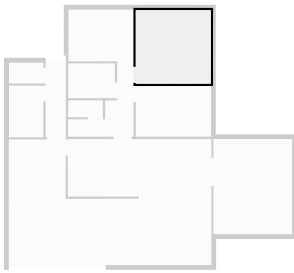
▼ **Bedroom**  
Ground Floor

WIDTH: 3.40 m • LENGTH: 2.72 m  
AREA: 9.24 m<sup>2</sup> • PERIMETER: 12.24 m



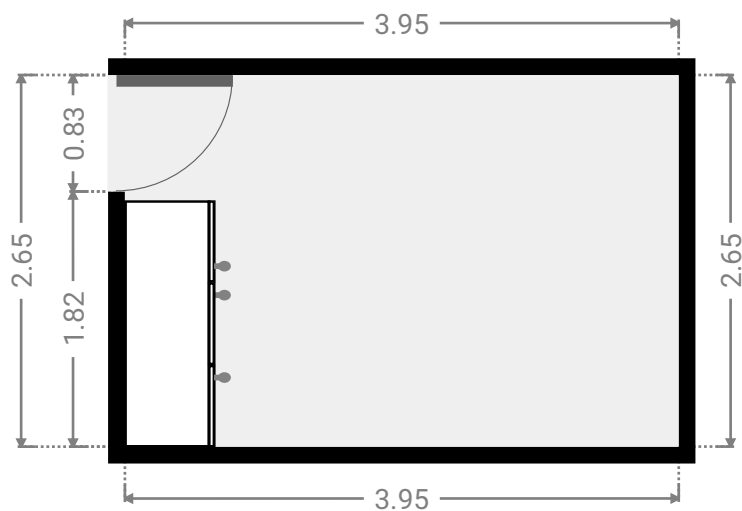
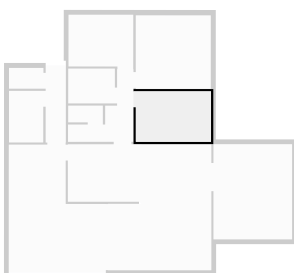
▼ **Master Bedroom**  
Ground Floor

WIDTH: 3.94 m • LENGTH: 3.86 m  
AREA: 15.22 m<sup>2</sup> • PERIMETER: 15.60 m



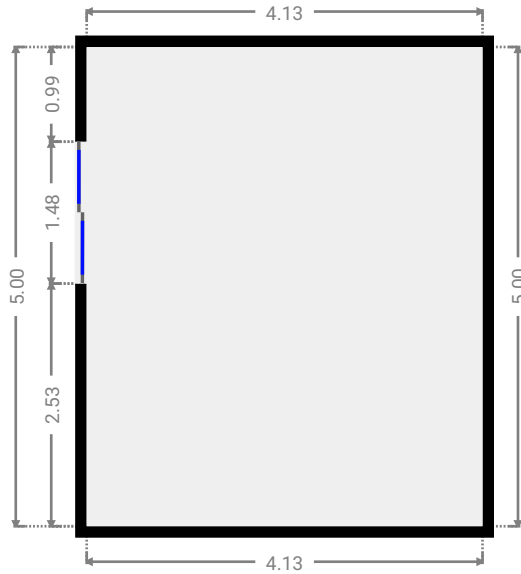
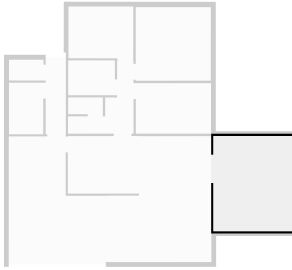
▼ **Bedroom**  
Ground Floor

WIDTH: 3.95 m • LENGTH: 2.65 m  
AREA: 10.47 m<sup>2</sup> • PERIMETER: 13.20 m



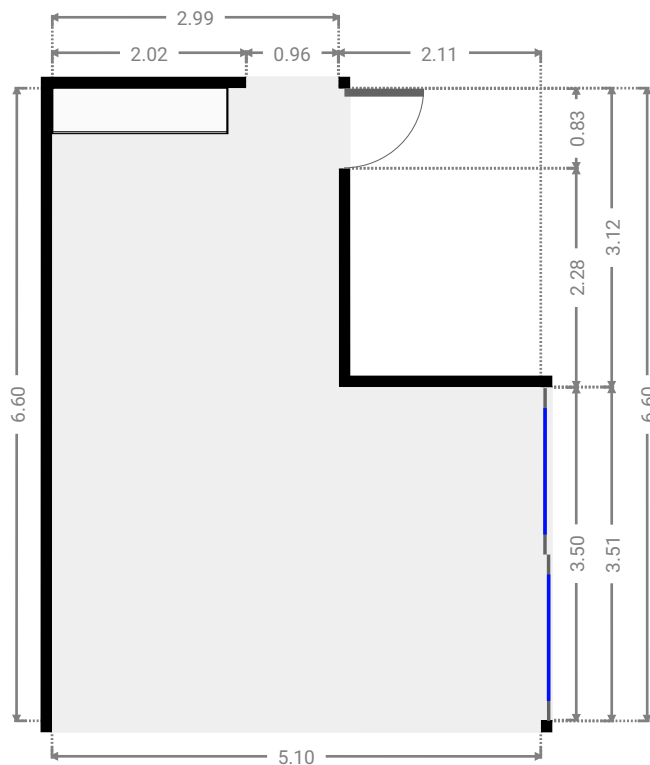
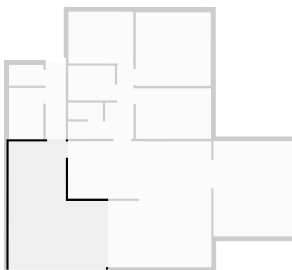
▼ Entertainment Area  
Ground Floor

WIDTH: 4.13 m • LENGTH: 5.00 m  
AREA: 20.65 m<sup>2</sup> • PERIMETER: 18.26 m



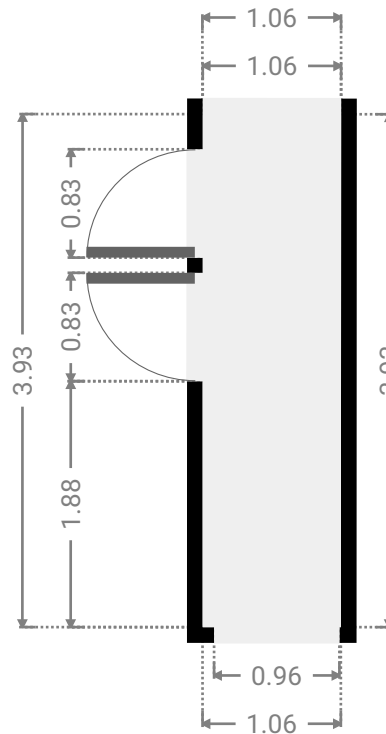
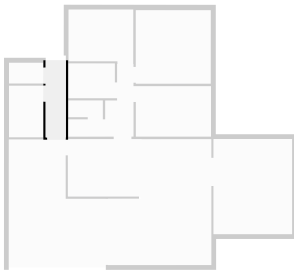
▼ Garage  
Ground Floor

WIDTH: 5.10 m • LENGTH: 6.60 m  
AREA: 27.08 m<sup>2</sup> • PERIMETER: 23.40 m



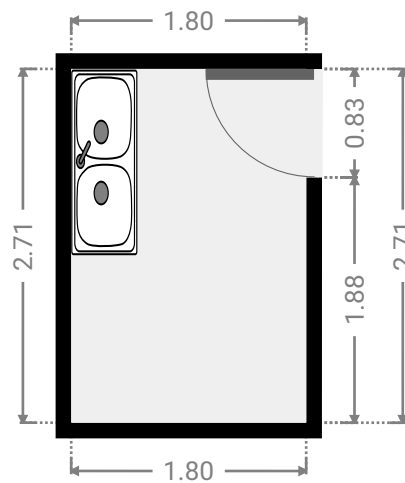
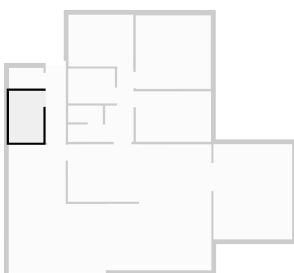
▼ **Hallway**  
Ground Floor

WIDTH: 1.06 m • LENGTH: 3.93 m  
AREA: 4.16 m<sup>2</sup> • PERIMETER: 9.98 m



▼ **Laundry Room**  
Ground Floor

WIDTH: 1.80 m • LENGTH: 2.71 m  
AREA: 4.88 m<sup>2</sup> • PERIMETER: 9.02 m





▼ **Storage**  
Ground Floor

WIDTH: 1.81 m • LENGTH: 1.09 m  
AREA: 1.97 m<sup>2</sup> • PERIMETER: 5.80 m

