

143 Rodboro Street

SUBMITTED BY

Ray White Rockhampton Casey
stockers@cqoz.com

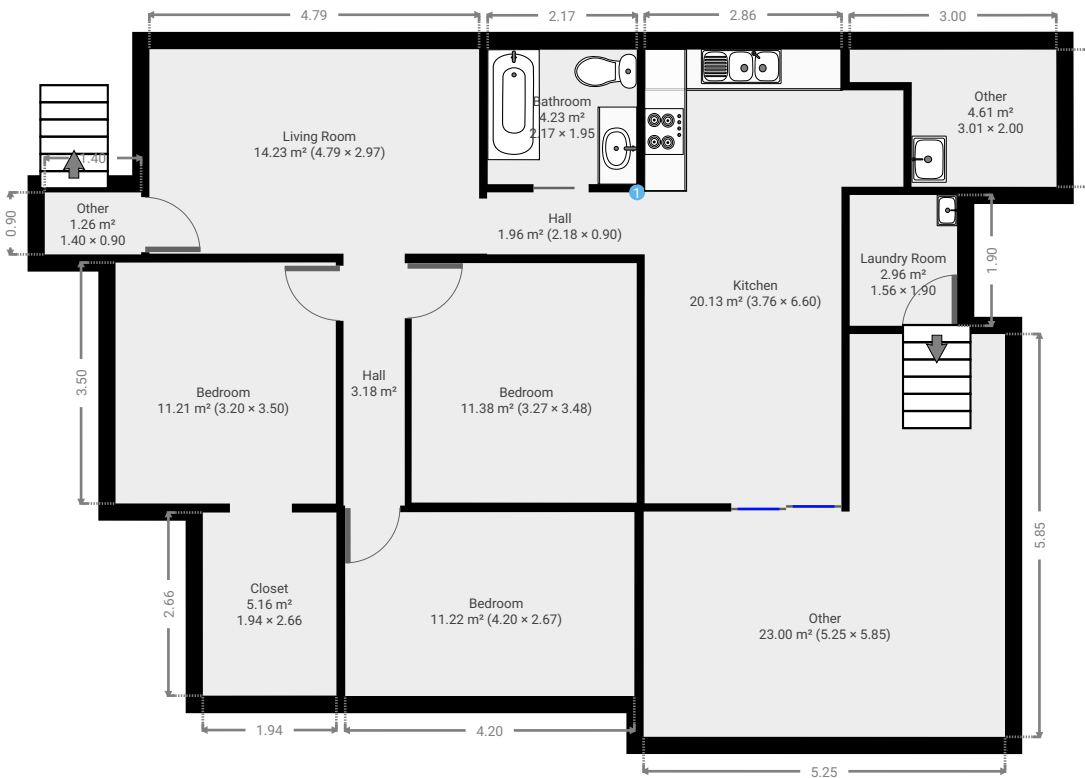
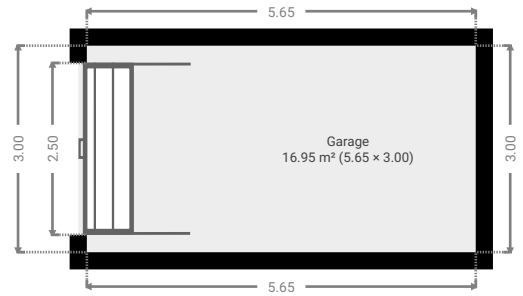
CREATED ON

2022-07-25

Floors

1

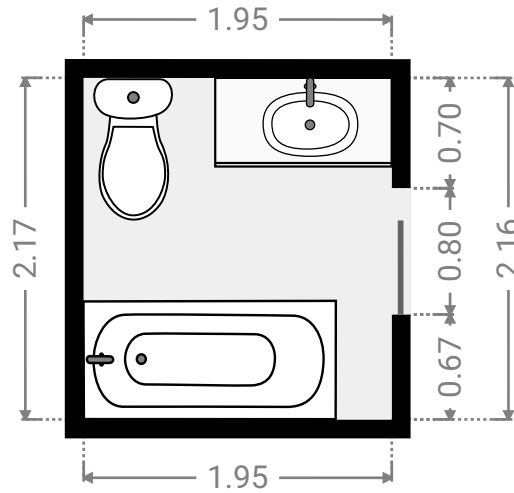
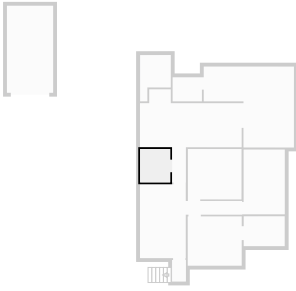
▼ Ground Floor



FLOORS: 1

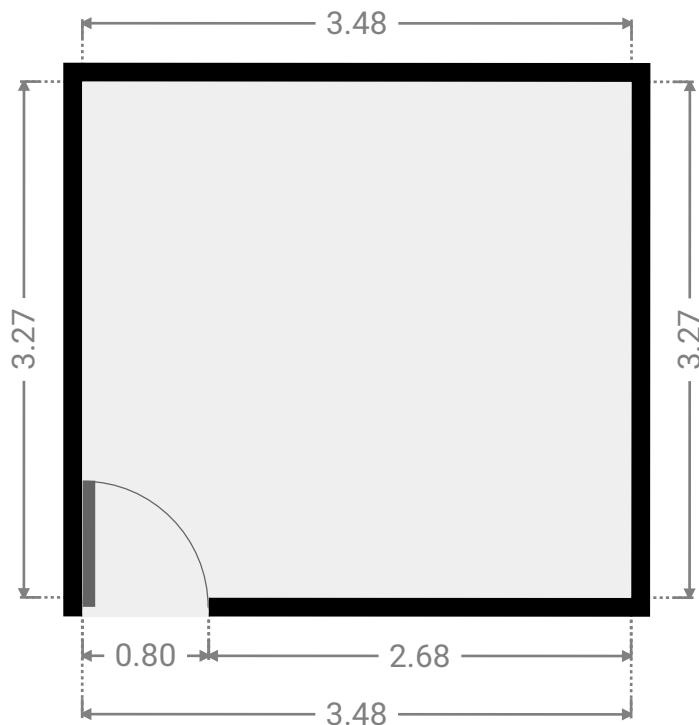
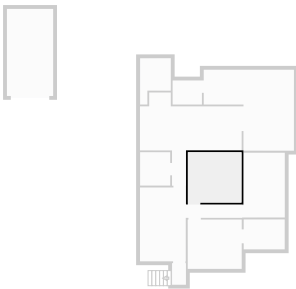
▼ **Bathroom**
Ground Floor

WIDTH: 1.95 m • LENGTH: 2.17 m
AREA: 4.23 m² • PERIMETER: 8.24 m



▼ **Bedroom**
Ground Floor

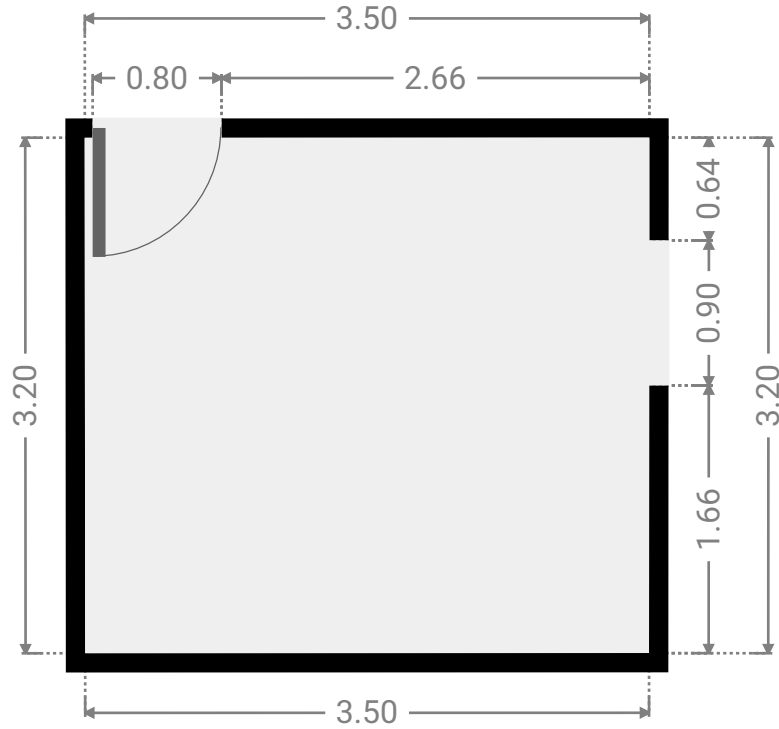
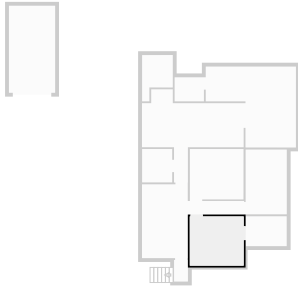
WIDTH: 3.48 m • LENGTH: 3.27 m
AREA: 11.38 m² • PERIMETER: 13.50 m



FLOORS: 1

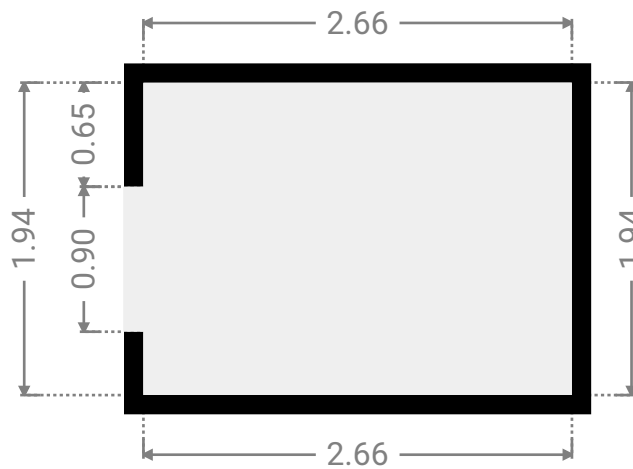
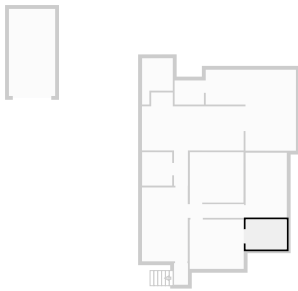
▼ **Bedroom**
Ground Floor

WIDTH: 3.50 m • LENGTH: 3.20 m
AREA: 11.21 m² • PERIMETER: 13.40 m



▼ **Closet**
Ground Floor

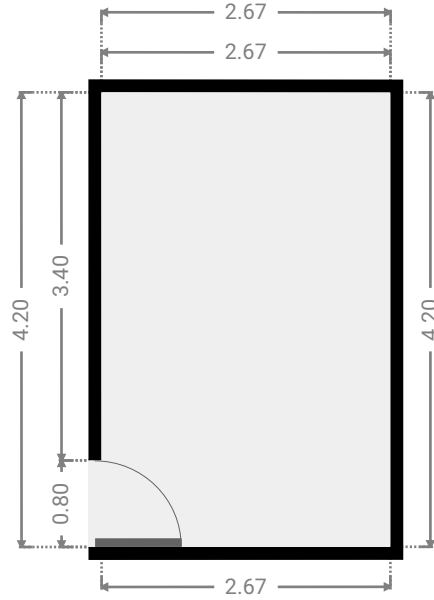
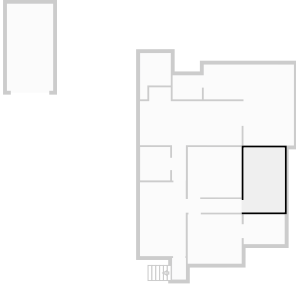
WIDTH: 2.66 m • LENGTH: 1.94 m
AREA: 5.16 m² • PERIMETER: 9.20 m



FLOORS: 1

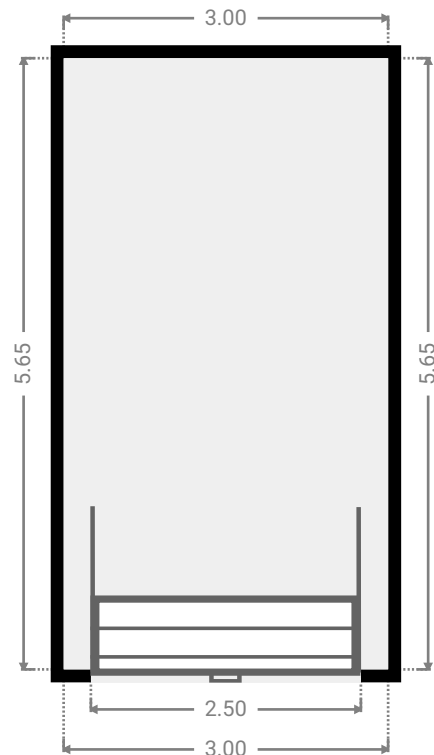
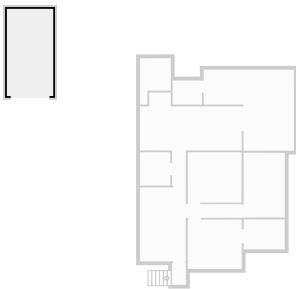
▼ **Bedroom**
Ground Floor

WIDTH: 2.67 m • LENGTH: 4.20 m
AREA: 11.22 m² • PERIMETER: 13.74 m



▼ **Garage**
Ground Floor

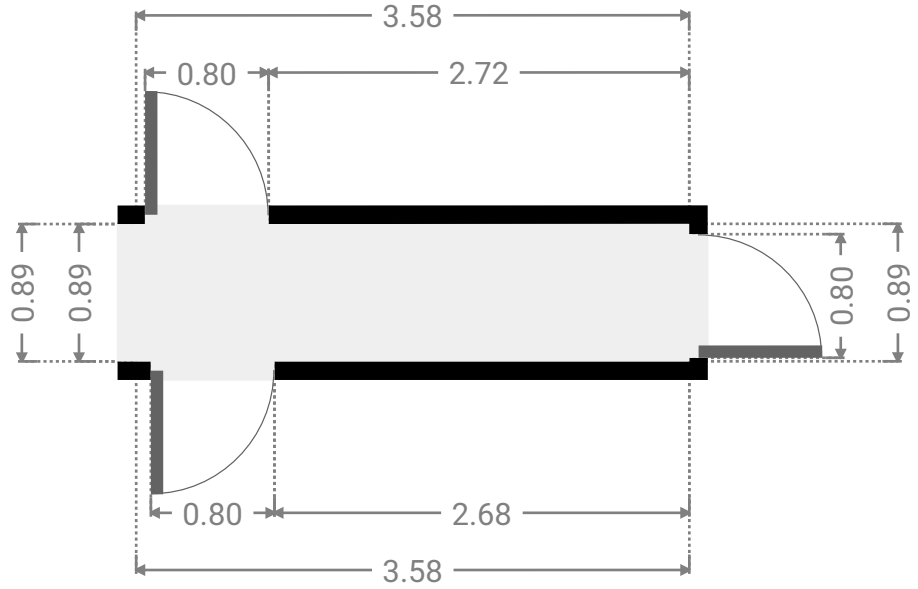
WIDTH: 3.00 m • LENGTH: 5.65 m
AREA: 16.95 m² • PERIMETER: 17.30 m



FLOORS: 1

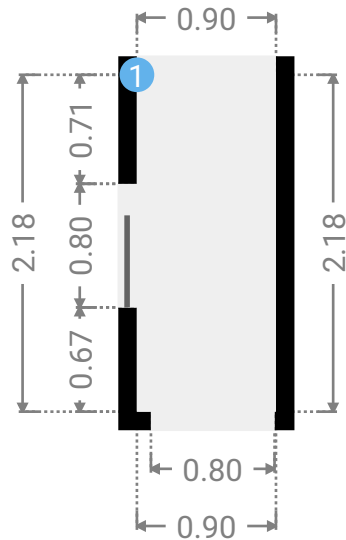
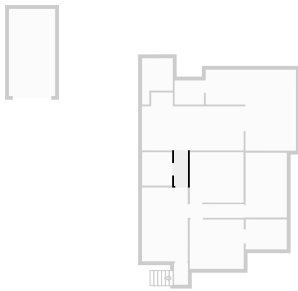
▼ **Hall**
Ground Floor

WIDTH: 3.58 m • LENGTH: 0.89 m
AREA: 3.18 m² • PERIMETER: 8.94 m



▼ **Hall**
Ground Floor

WIDTH: 0.90 m • LENGTH: 2.18 m
AREA: 1.96 m² • PERIMETER: 6.16 m



▼ Hall/Ground Floor

1 OPENING

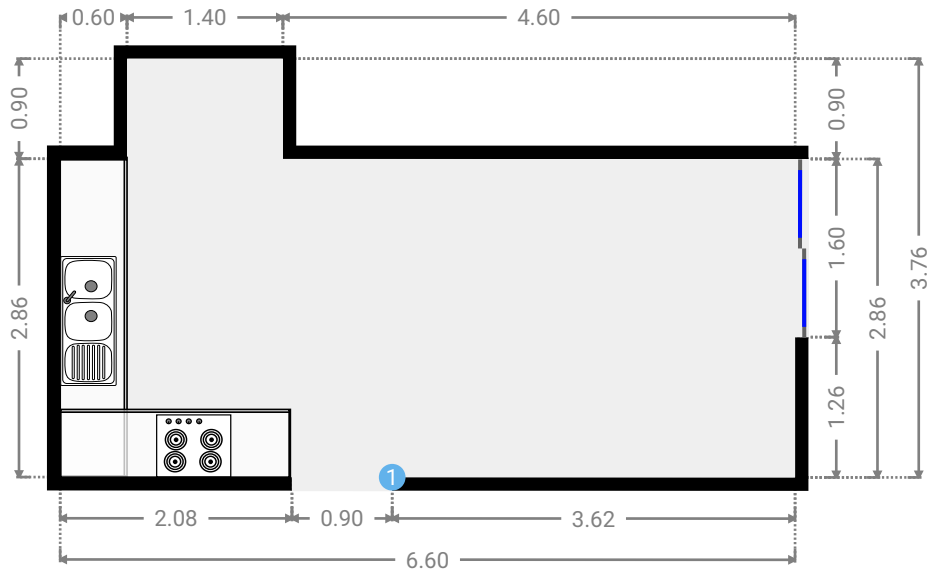
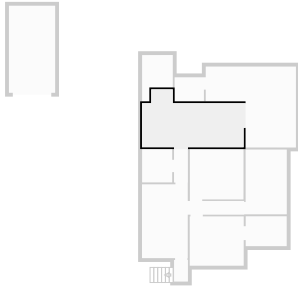
Height
0.00 m



FLOORS: 1

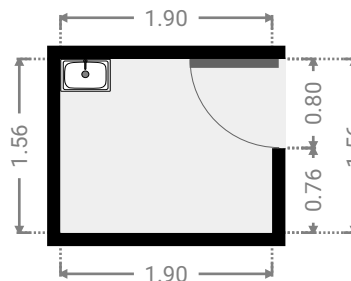
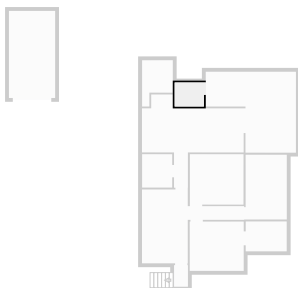
▼ **Kitchen**
Ground Floor

WIDTH: 6.60 m • LENGTH: 3.76 m
AREA: 20.13 m² • PERIMETER: 20.72 m



▼ **Laundry Room**
Ground Floor

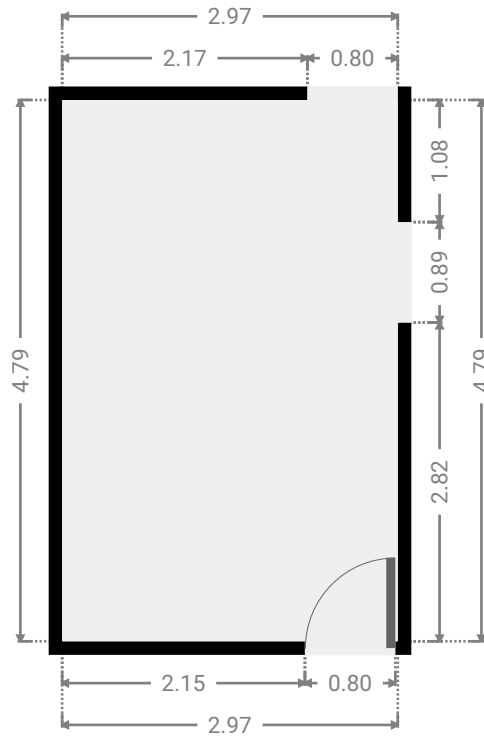
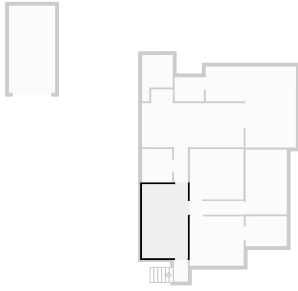
WIDTH: 1.90 m • LENGTH: 1.56 m
AREA: 2.96 m² • PERIMETER: 6.92 m



FLOORS: 1

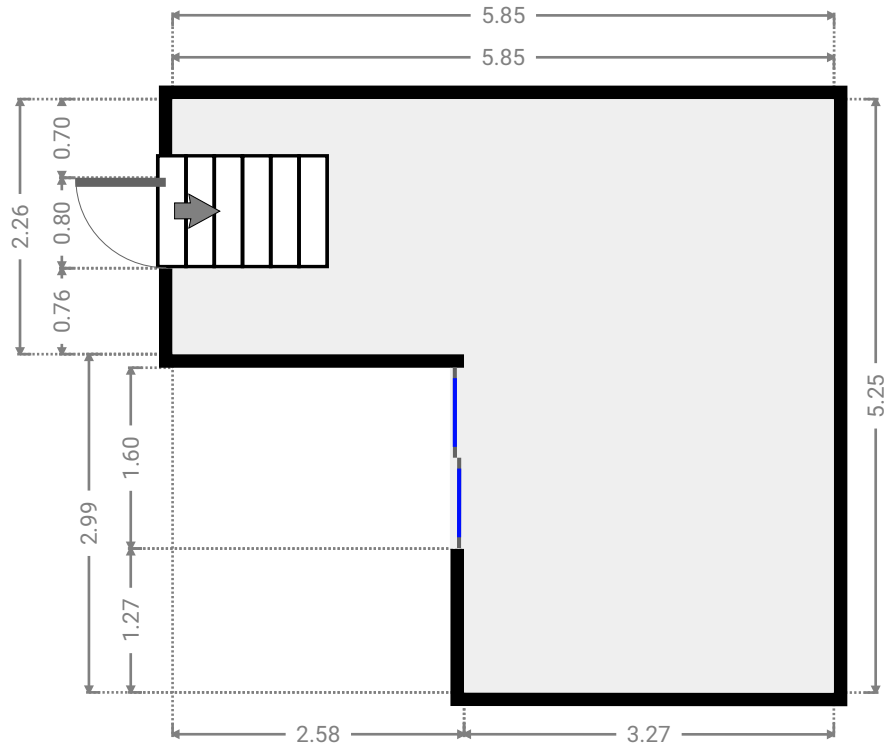
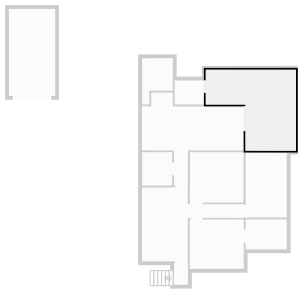
▼ **Living Room**
Ground Floor

WIDTH: 2.97 m • LENGTH: 4.79 m
AREA: 14.23 m² • PERIMETER: 15.52 m



▼ **Other**
Ground Floor

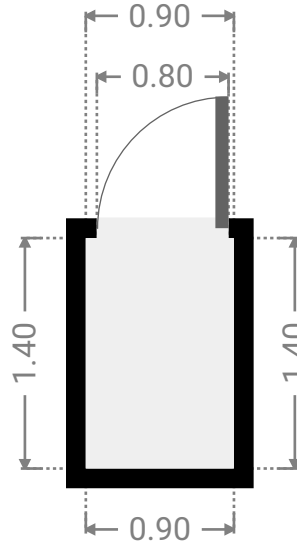
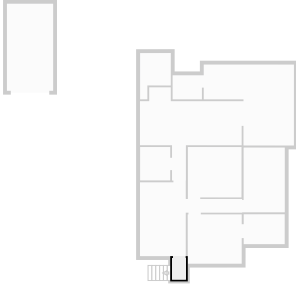
WIDTH: 5.85 m • LENGTH: 5.25 m
AREA: 23.00 m² • PERIMETER: 22.21 m



FLOORS: 1

▼ Other
Ground Floor

WIDTH: 0.90 m • LENGTH: 1.40 m
AREA: 1.26 m² • PERIMETER: 4.60 m



▼ Other
Ground Floor

WIDTH: 2.00 m • LENGTH: 3.01 m
AREA: 4.61 m² • PERIMETER: 9.99 m

