

140 Denham Terrace

SUBMITTED BY

Ray White Rockhampton Casey
stockers@cqoz.com

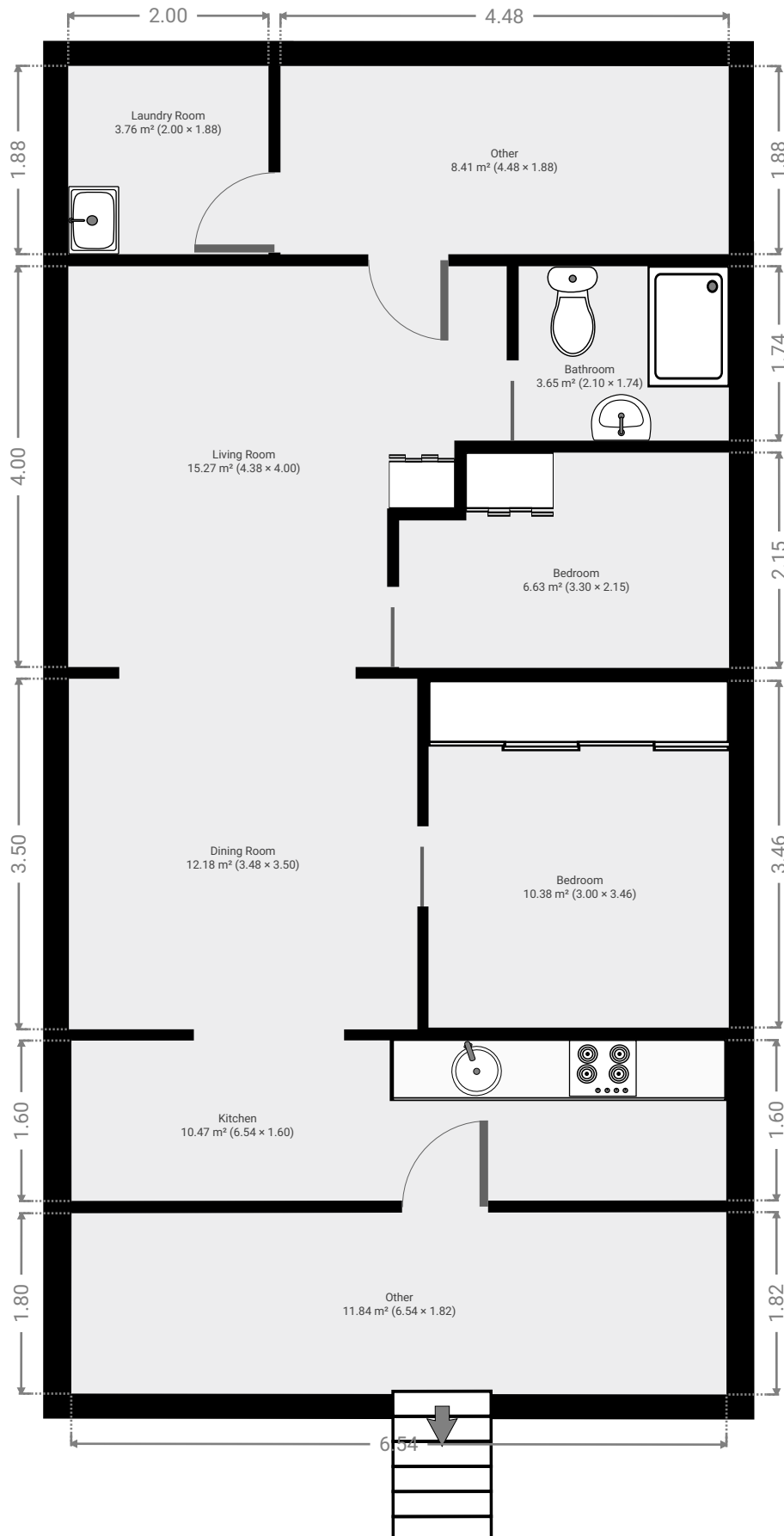
CREATED ON

2022-05-17

Floors

1

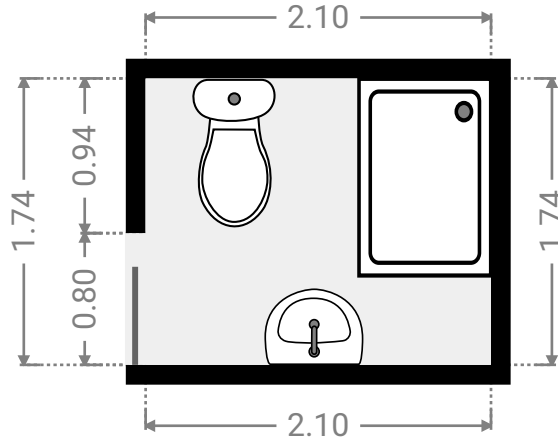
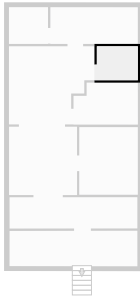
▼ Ground Floor



FLOORS: 1

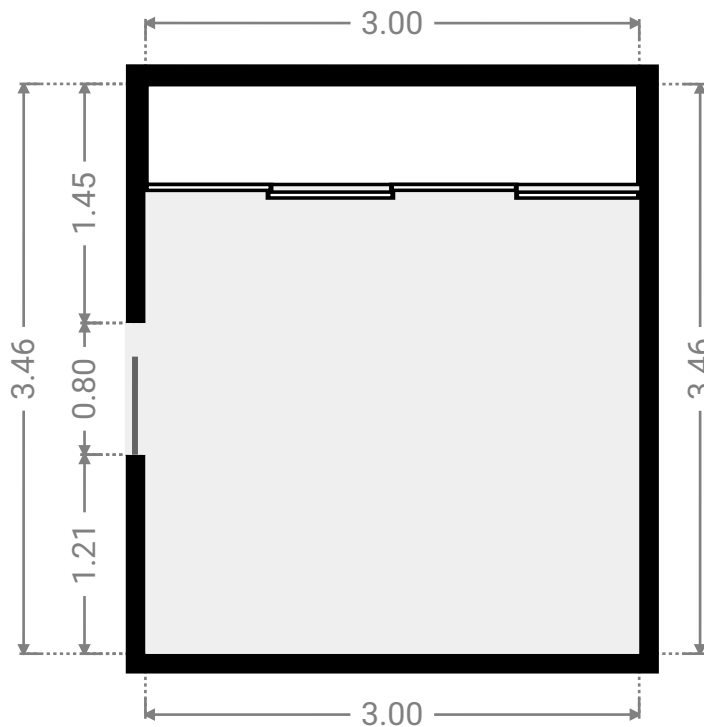
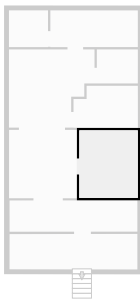
▼ Bathroom
Ground Floor

WIDTH: 2.10 m • LENGTH: 1.74 m
AREA: 3.65 m² • PERIMETER: 7.68 m



▼ Bedroom
Ground Floor

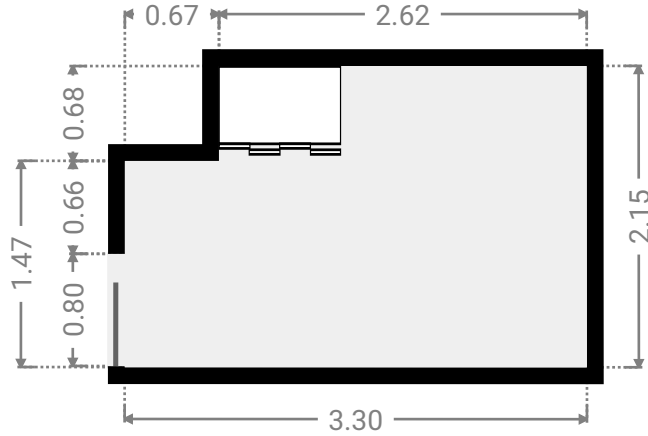
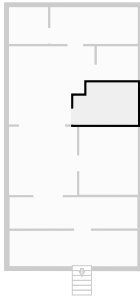
WIDTH: 3.00 m • LENGTH: 3.46 m
AREA: 10.38 m² • PERIMETER: 12.92 m



FLOORS: 1

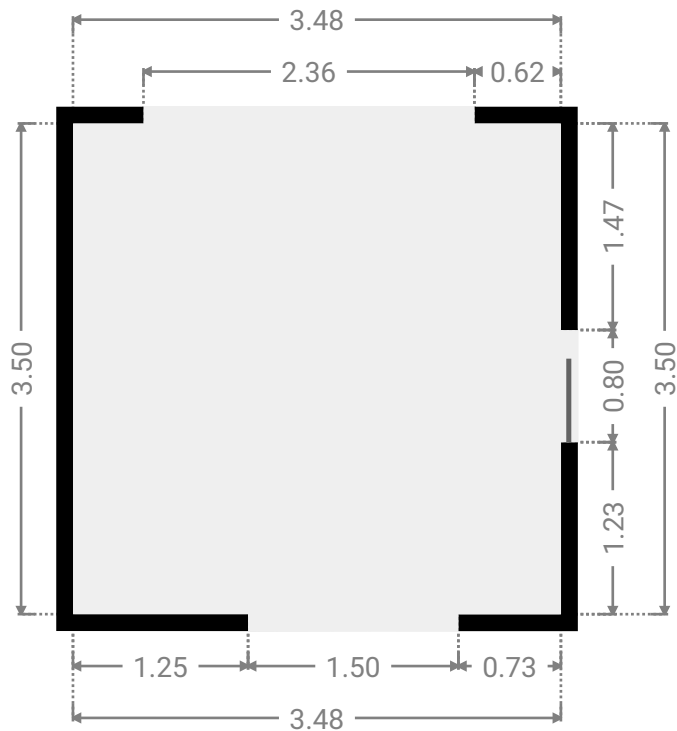
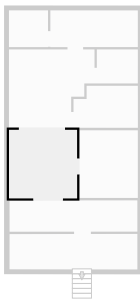
▼ **Bedroom**
Ground Floor

WIDTH: 3.30 m • LENGTH: 2.15 m
AREA: 6.63 m² • PERIMETER: 10.89 m



▼ **Dining Room**
Ground Floor

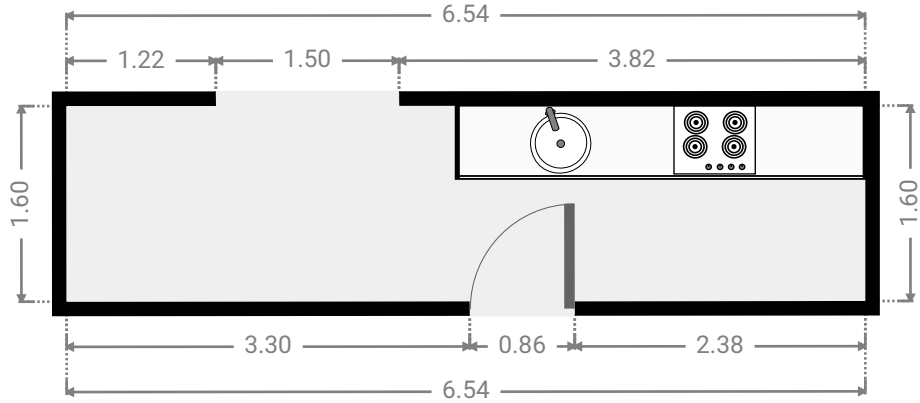
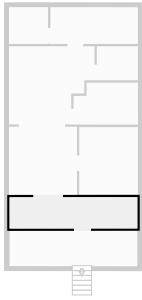
WIDTH: 3.48 m • LENGTH: 3.50 m
AREA: 12.18 m² • PERIMETER: 13.96 m



FLOORS: 1

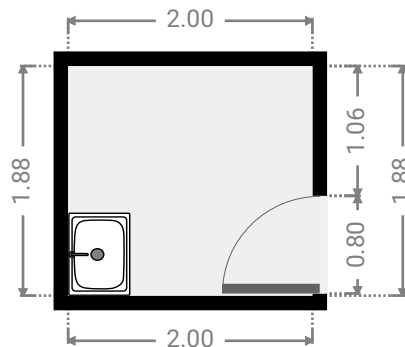
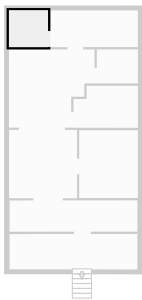
▼ Kitchen
Ground Floor

WIDTH: 6.54 m • LENGTH: 1.60 m
AREA: 10.47 m² • PERIMETER: 16.28 m



▼ Laundry Room
Ground Floor

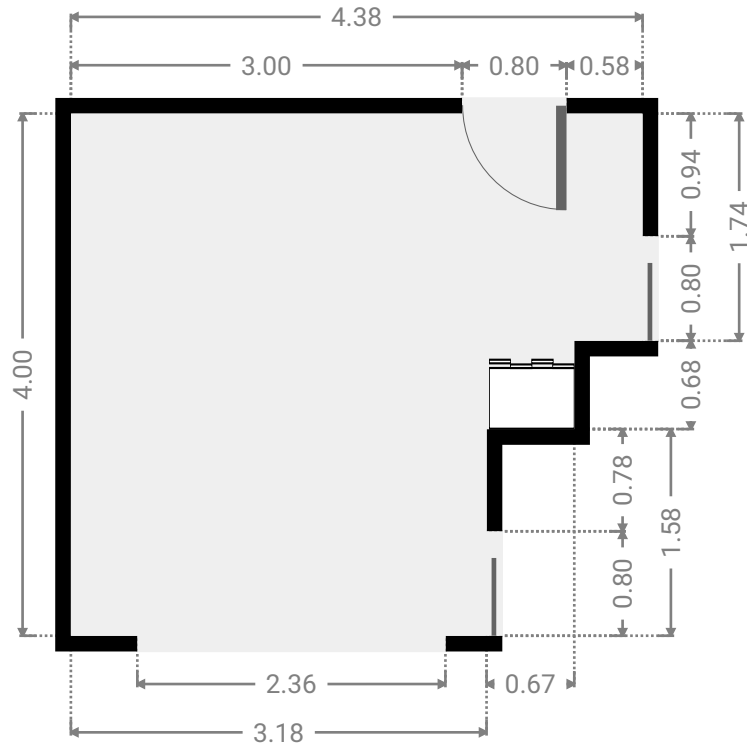
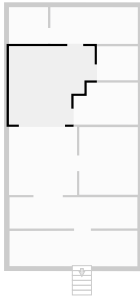
WIDTH: 2.00 m • LENGTH: 1.88 m
AREA: 3.76 m² • PERIMETER: 7.76 m



FLOORS: 1

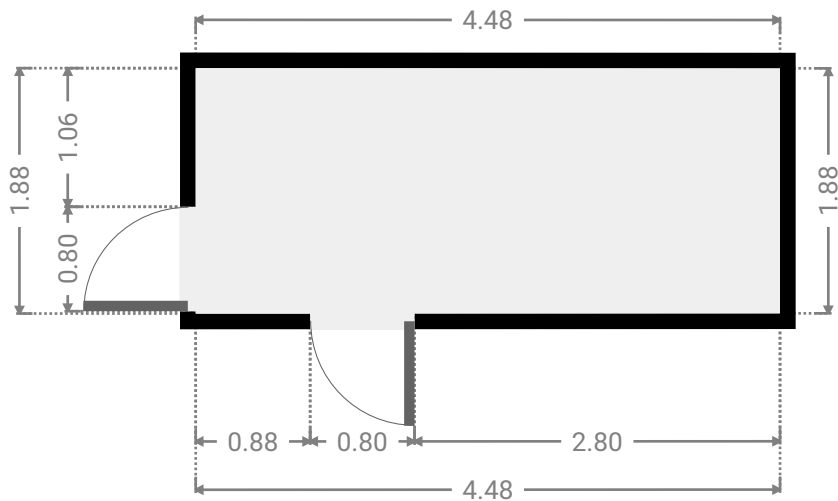
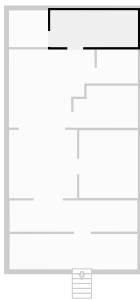
▼ Living Room
Ground Floor

WIDTH: 4.38 m • LENGTH: 4.00 m
AREA: 15.27 m² • PERIMETER: 16.76 m



▼ Other
Ground Floor

WIDTH: 4.48 m • LENGTH: 1.88 m
AREA: 8.41 m² • PERIMETER: 12.71 m



▼ Other
Ground Floor

WIDTH: 6.54 m • LENGTH: 1.82 m
AREA: 11.84 m² • PERIMETER: 16.70 m

