

140/19 Schuffenhauer Street

SUBMITTED BY

Ray White Rockhampton Casey
stockers@cqoz.com

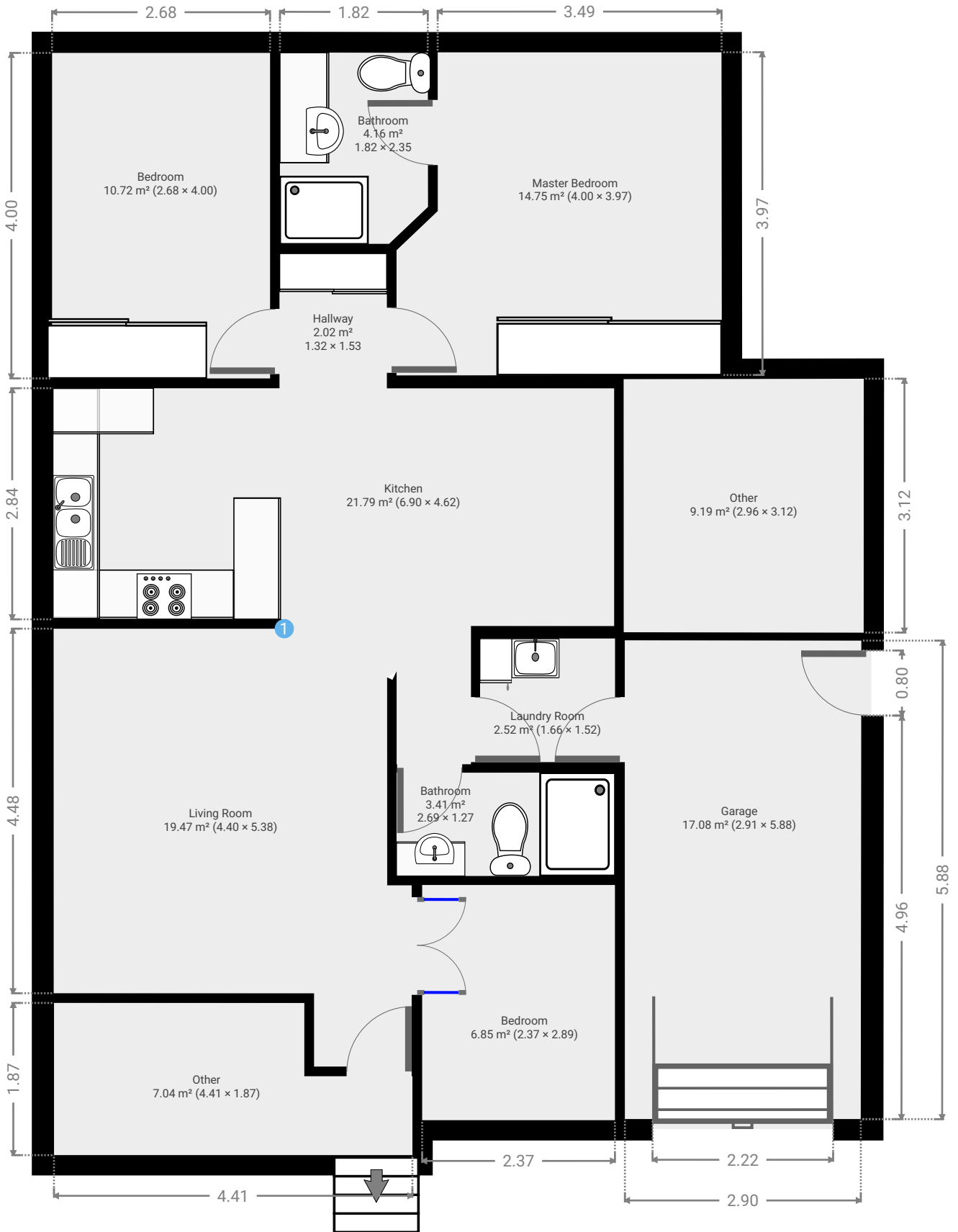
CREATED ON

2021-12-02

Floors

1

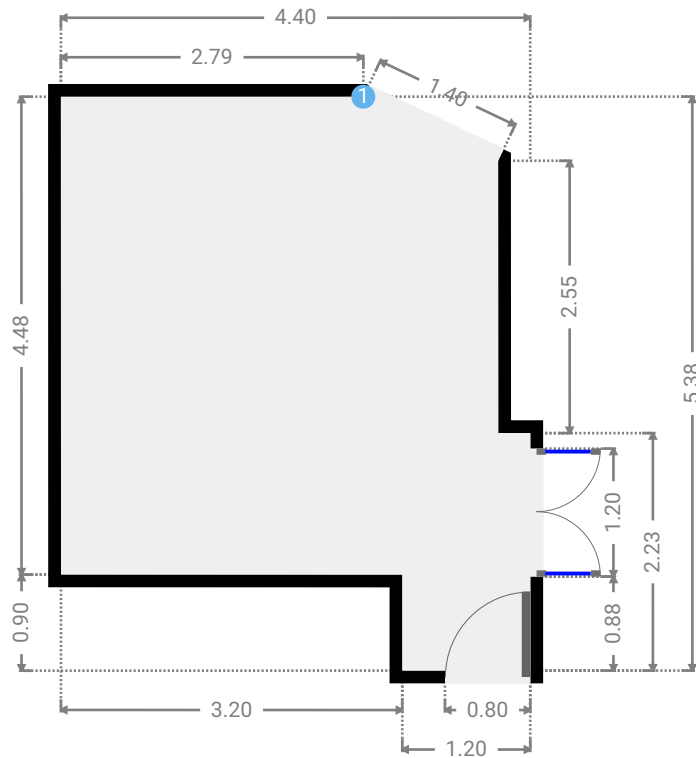
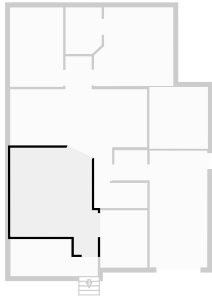
▼ Ground Floor



FLOORS: 1

▼ **Living Room**
Ground Floor

WIDTH: 4.40 m • LENGTH: 5.38 m
AREA: 19.47 m² • PERIMETER: 19.10 m



▼ **Living Room/Ground Floor**

1 OPENING

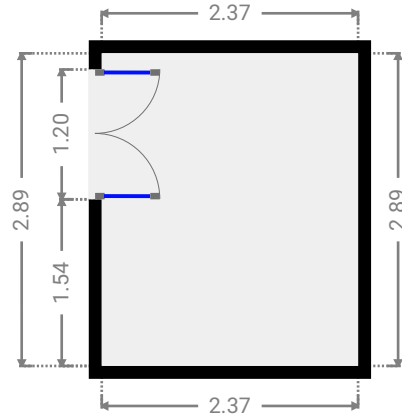
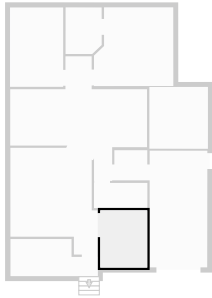
Height
0.00 m



FLOORS: 1

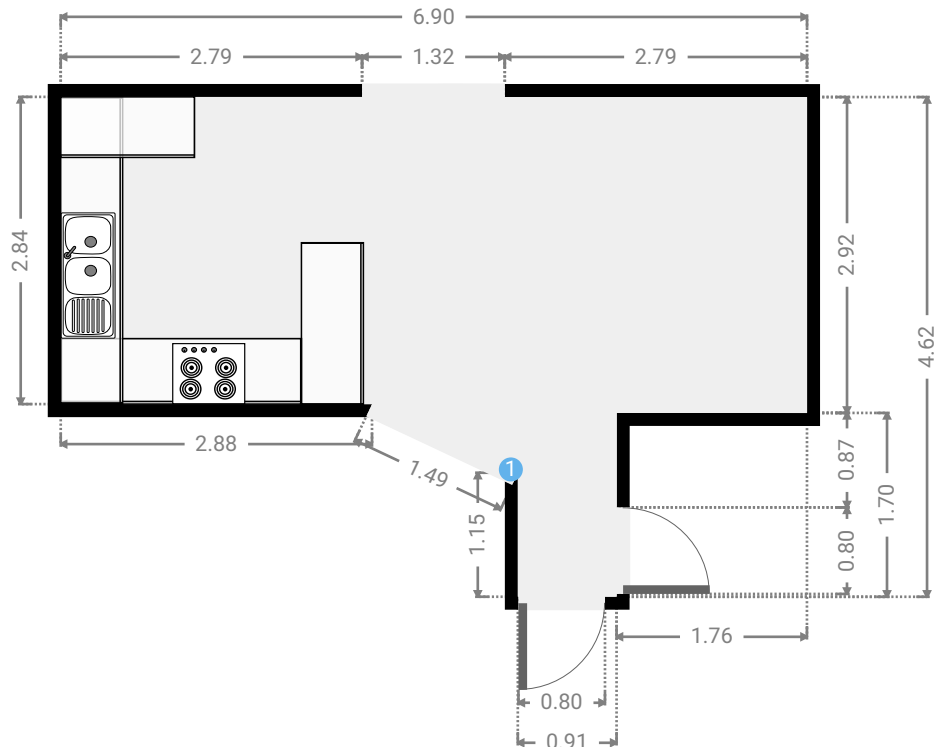
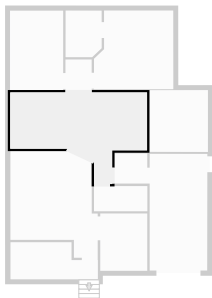
▼ **Bedroom**
Ground Floor

WIDTH: 2.37 m • LENGTH: 2.89 m
AREA: 6.85 m² • PERIMETER: 10.52 m



▼ **Kitchen**
Ground Floor

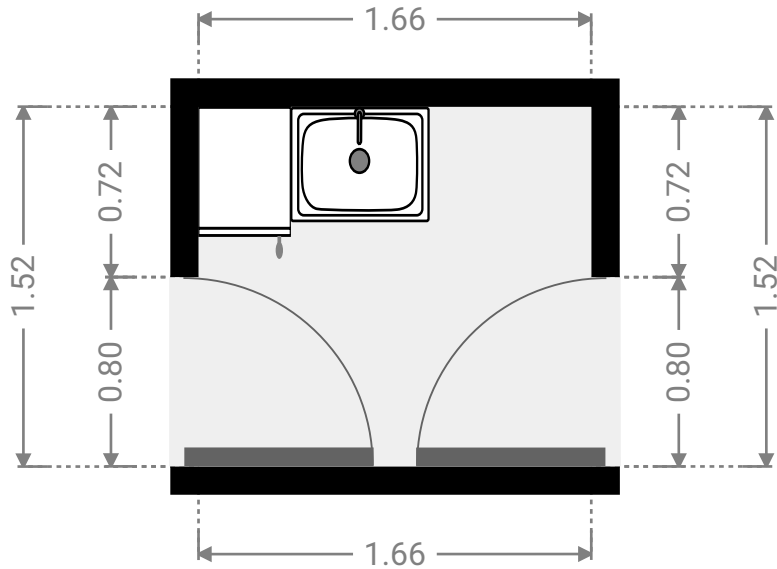
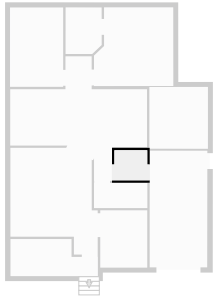
WIDTH: 6.90 m • LENGTH: 4.62 m
AREA: 21.79 m² • PERIMETER: 22.55 m



FLOORS: 1

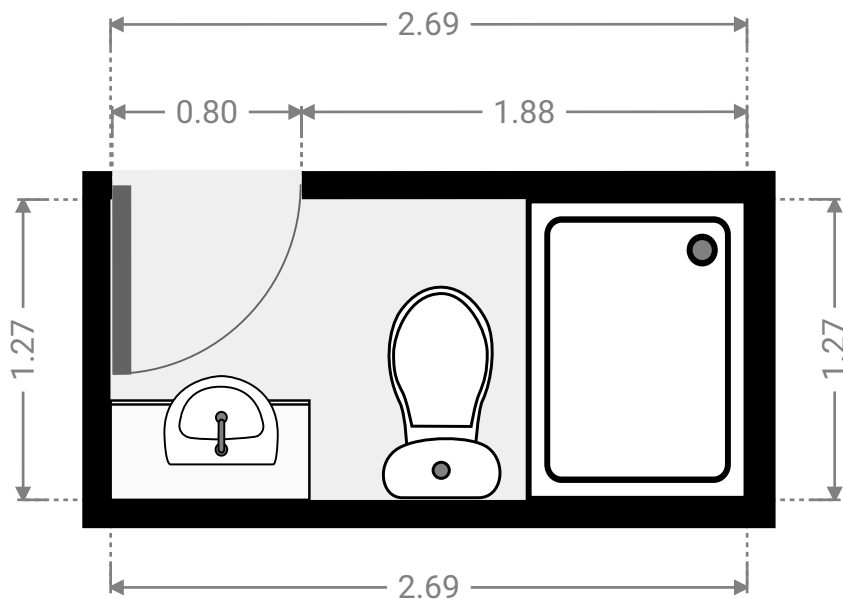
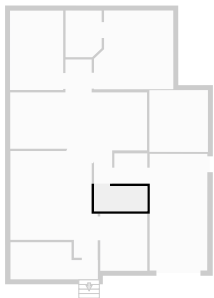
▼ Laundry Room
Ground Floor

WIDTH: 1.66 m • LENGTH: 1.52 m
AREA: 2.52 m² • PERIMETER: 6.36 m



▼ Bathroom
Ground Floor

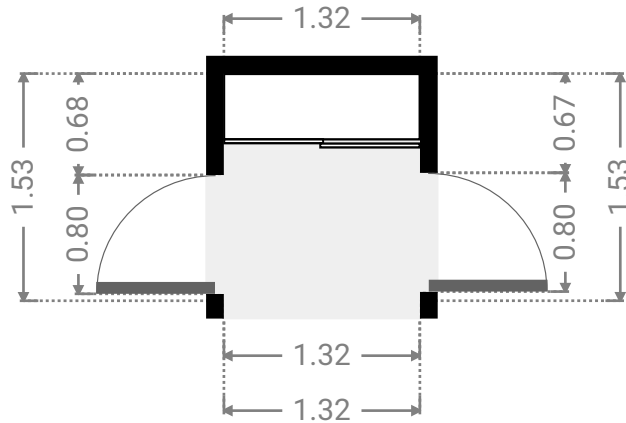
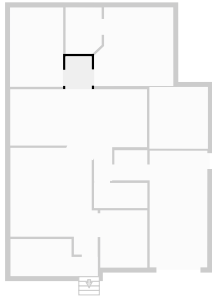
WIDTH: 2.69 m • LENGTH: 1.27 m
AREA: 3.41 m² • PERIMETER: 7.92 m



FLOORS: 1

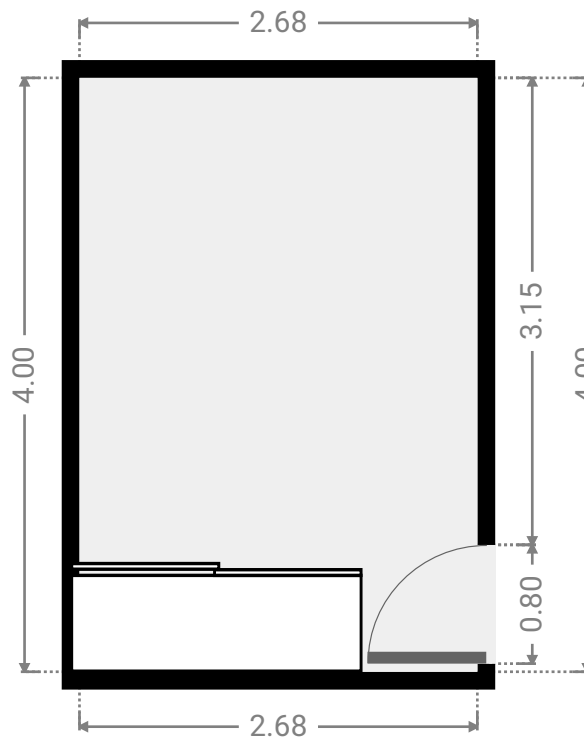
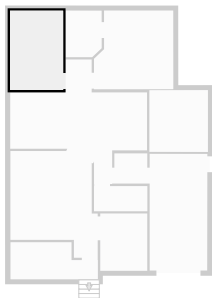
▼ **Hallway**
Ground Floor

WIDTH: 1.32 m • LENGTH: 1.53 m
AREA: 2.02 m² • PERIMETER: 5.70 m



▼ **Bedroom**
Ground Floor

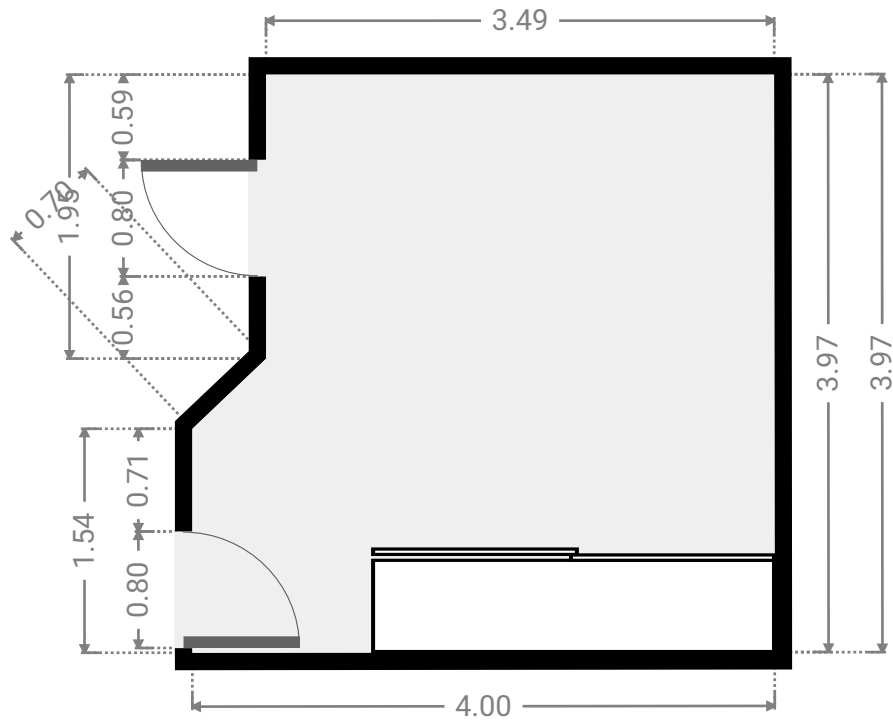
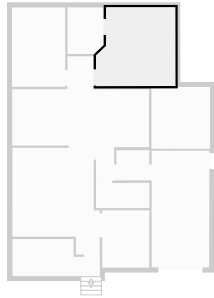
WIDTH: 2.68 m • LENGTH: 4.00 m
AREA: 10.72 m² • PERIMETER: 13.36 m



FLOORS: 1

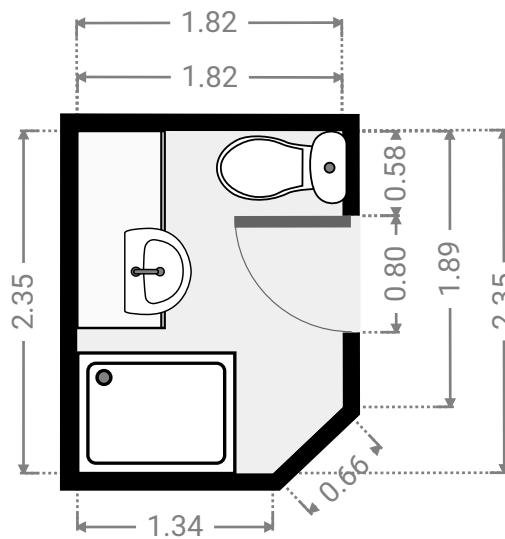
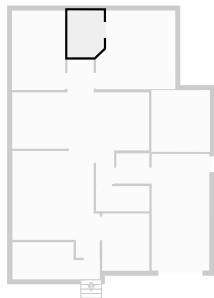
▼ **Master Bedroom**
Ground Floor

WIDTH: 4.00 m • LENGTH: 3.97 m
AREA: 14.75 m² • PERIMETER: 15.64 m



▼ **Bathroom**
Ground Floor

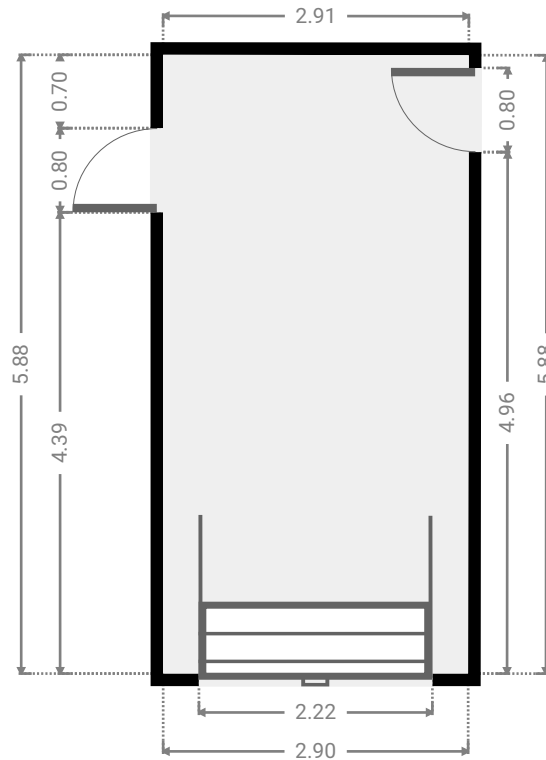
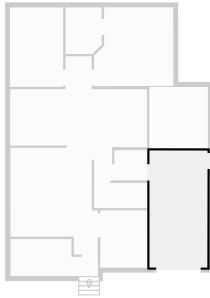
WIDTH: 1.82 m • LENGTH: 2.35 m
AREA: 4.16 m² • PERIMETER: 8.06 m



FLOORS: 1

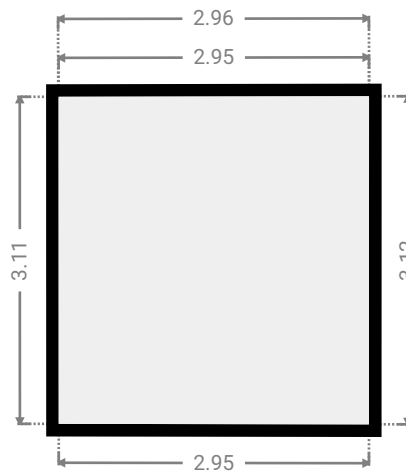
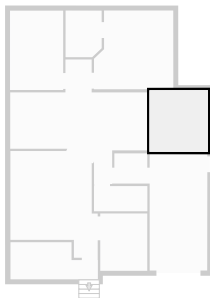
▼ **Garage**
Ground Floor

WIDTH: 2.91 m • LENGTH: 5.88 m
AREA: 17.08 m² • PERIMETER: 17.57 m



▼ **Other**
Ground Floor

WIDTH: 2.96 m • LENGTH: 3.12 m
AREA: 9.19 m² • PERIMETER: 12.13 m



▼ Other
Ground Floor

WIDTH: 4.41 m • LENGTH: 1.87 m
AREA: 7.04 m² • PERIMETER: 12.55 m

