

14 Zamia Way

SUBMITTED BY

Ray White Rockhampton Casey
stockers@cqoz.com

CREATED ON

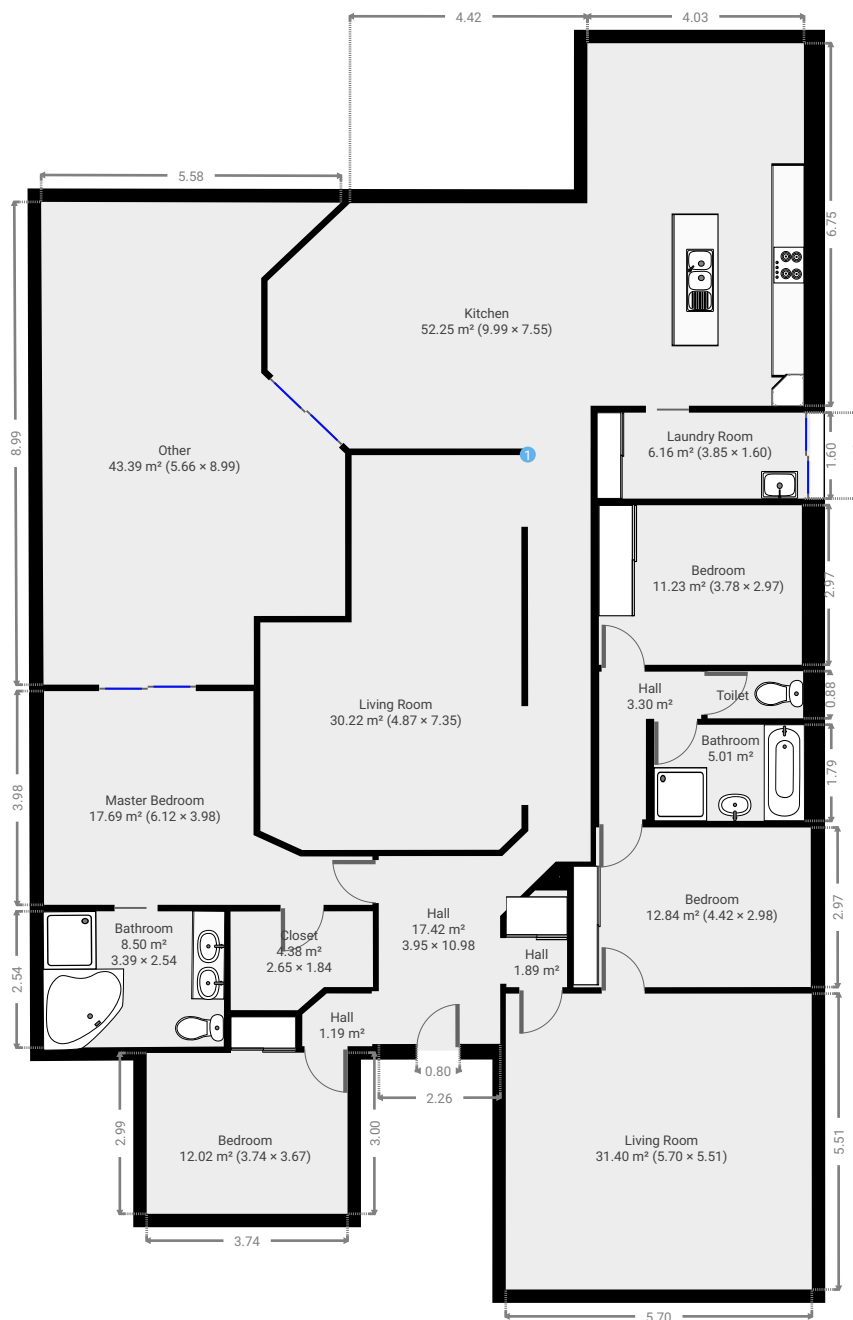
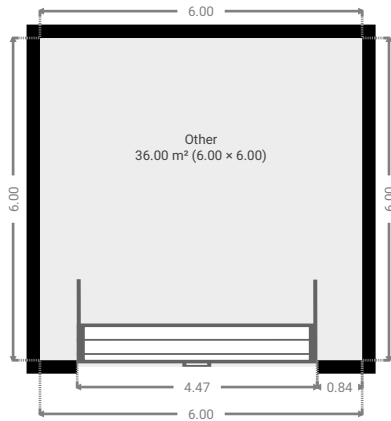
2022-02-02

Floors

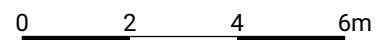
1

FLOORS: 1

▼ Ground Floor

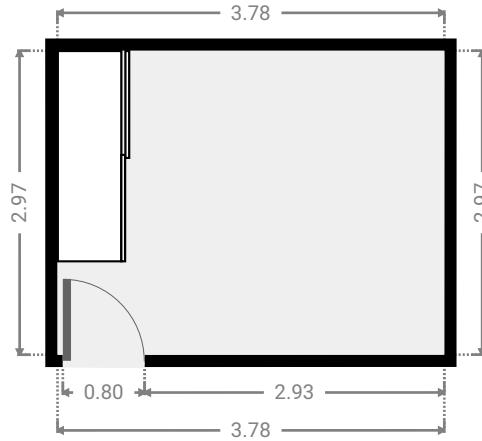
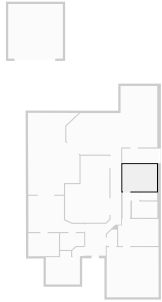


THIS FLOORPLAN IS PROVIDED WITHOUT WARRANTY OF ANY KIND. SENSOPIA DISCLAIMS ANY WARRANTY INCLUDING, WITHOUT LIMITATION, SATISFACTORY QUALITY OR ACCURACY OF DIMENSIONS.



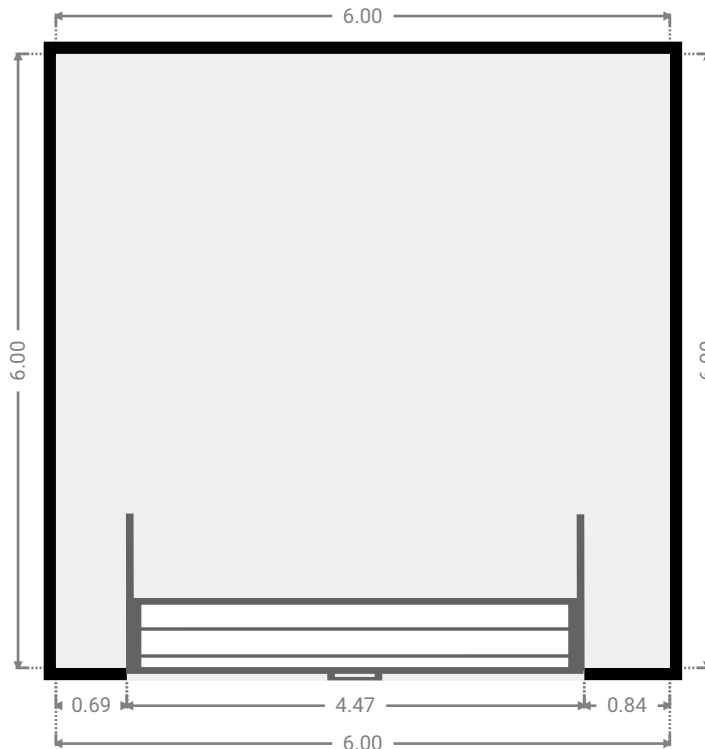
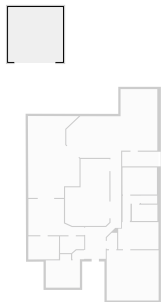
▼ **Bedroom**
Ground Floor

WIDTH: 3.78 m • LENGTH: 2.97 m
AREA: 11.23 m² • PERIMETER: 13.50 m



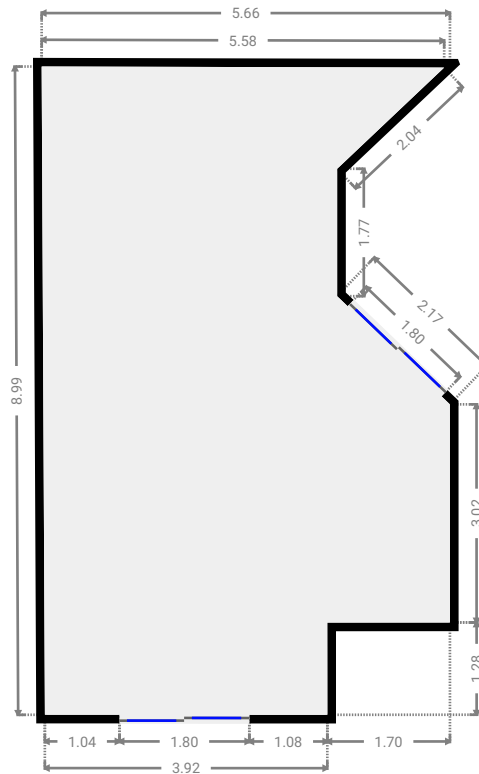
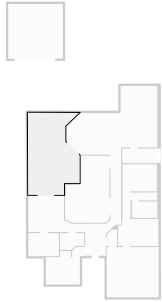
▼ **Other**
Ground Floor

WIDTH: 6.00 m • LENGTH: 6.00 m
AREA: 36.00 m² • PERIMETER: 24.00 m



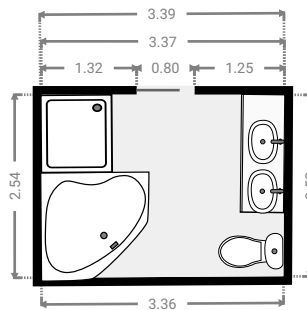
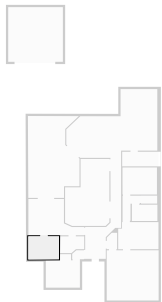
▼ Other Ground Floor

WIDTH: 5.66 m • LENGTH: 8.99 m
AREA: 43.39 m² • PERIMETER: 30.47 m



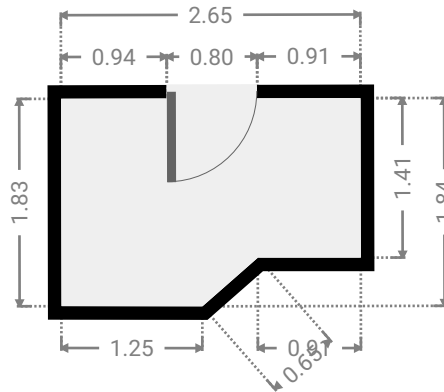
▼ Bathroom Ground Floor

WIDTH: 3.39 m • LENGTH: 2.54 m
AREA: 8.50 m² • PERIMETER: 11.78 m



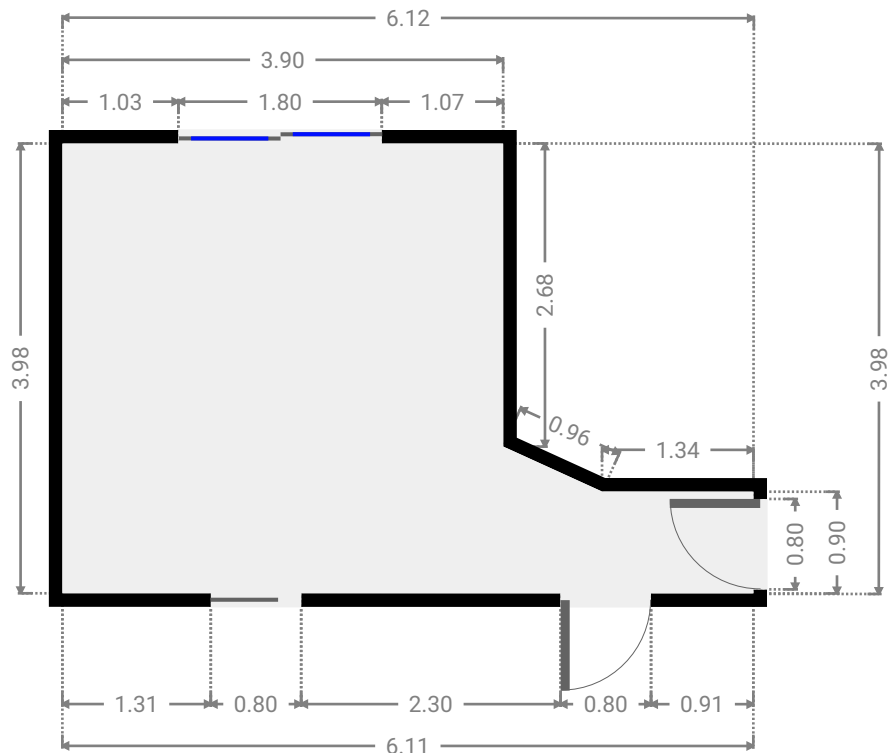
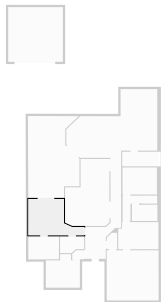
▼ **Closet**
Ground Floor

WIDTH: 2.65 m • LENGTH: 1.84 m
AREA: 4.38 m² • PERIMETER: 8.71 m



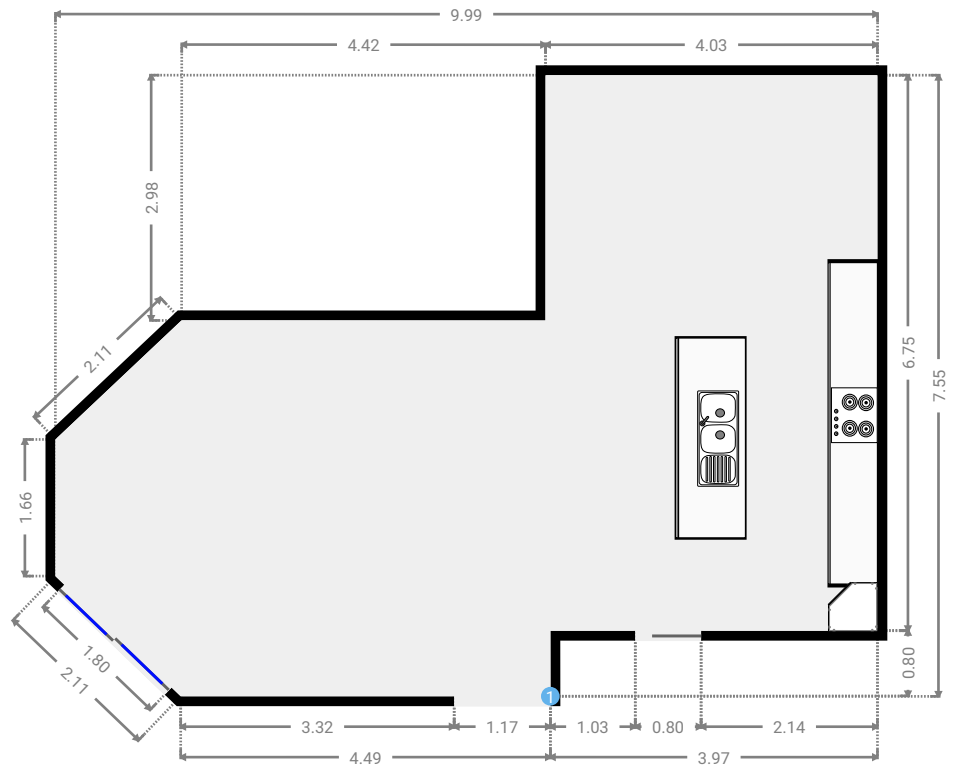
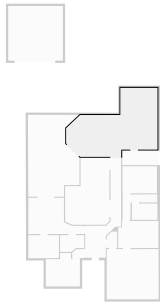
▼ **Master Bedroom**
Ground Floor

WIDTH: 6.12 m • LENGTH: 3.98 m
AREA: 17.69 m² • PERIMETER: 19.88 m



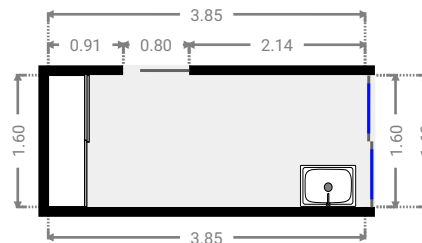
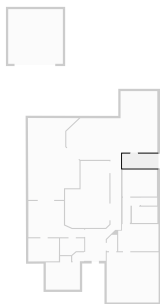
▼ Kitchen
Ground Floor

WIDTH: 9.99 m • LENGTH: 7.55 m
AREA: 52.25 m² • PERIMETER: 33.33 m



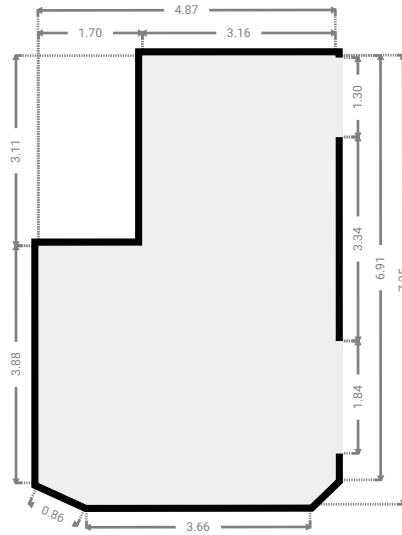
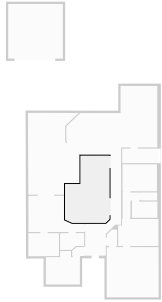
▼ Laundry Room
Ground Floor

WIDTH: 3.85 m • LENGTH: 1.60 m
AREA: 6.16 m² • PERIMETER: 10.90 m



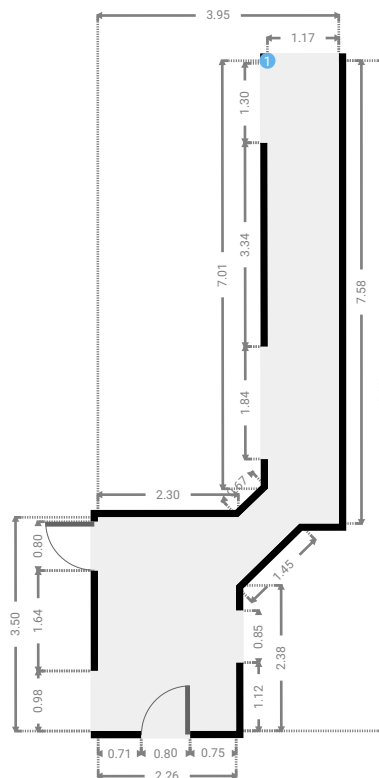
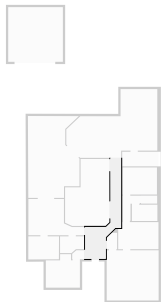
▼ Living Room Ground Floor

WIDTH: 4.87 m • LENGTH: 7.35 m
AREA: 30.22 m² • PERIMETER: 23.91 m



▼ Hall Ground Floor

WIDTH: 3.95 m • LENGTH: 10.98 m
AREA: 17.42 m² • PERIMETER: 28.97 m



▼ **Hall**/Ground Floor

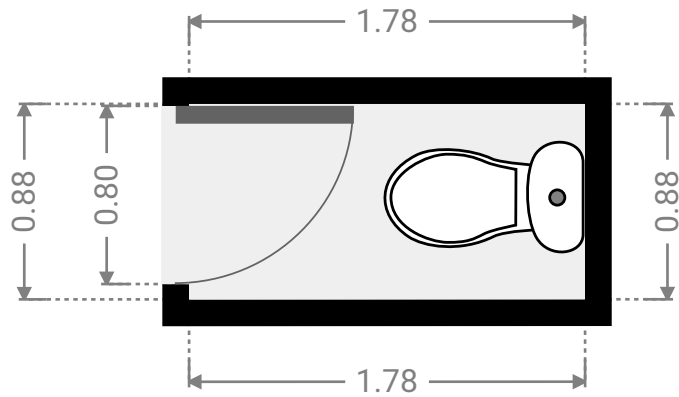
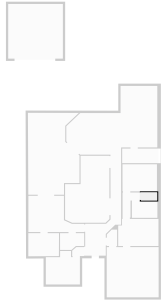
1 **OPENING**

Height
0.00 m



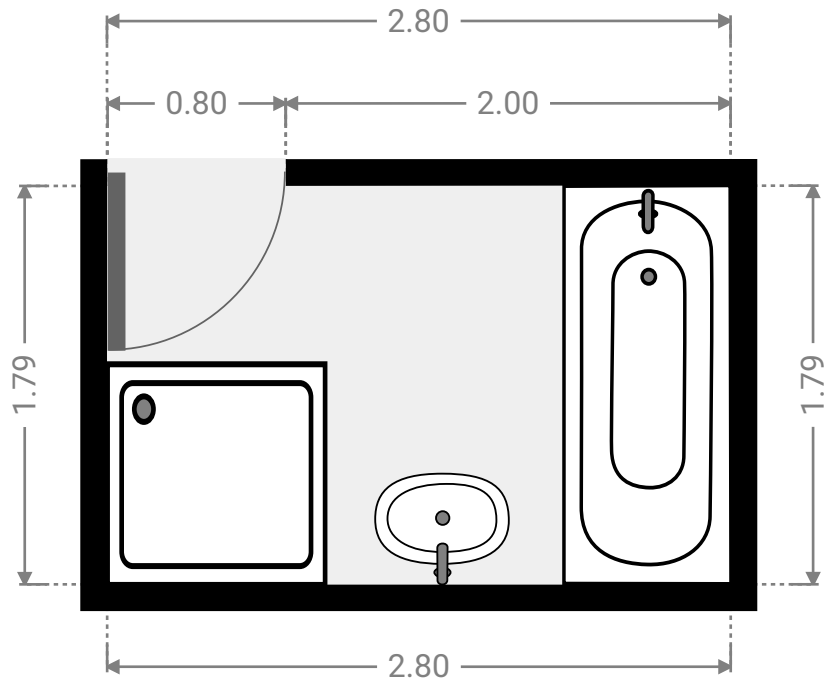
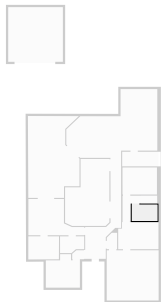
▼ **Toilet**
Ground Floor

WIDTH: 1.78 m • LENGTH: 0.88 m
AREA: 1.56 m² • PERIMETER: 5.31 m



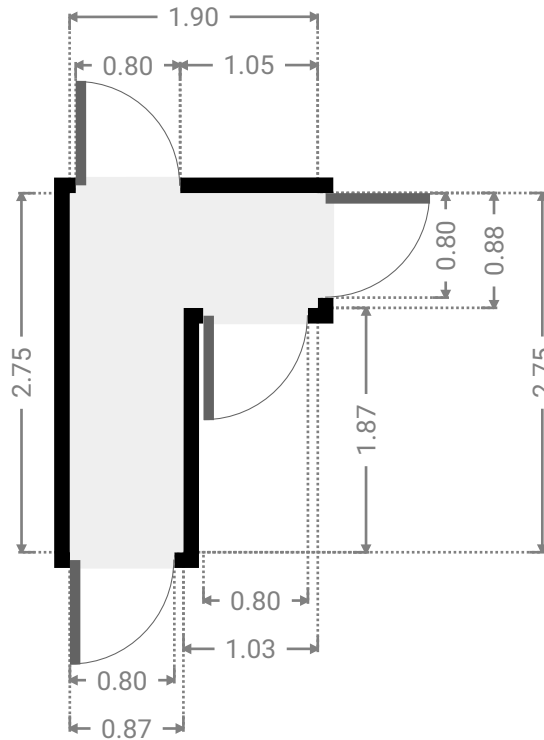
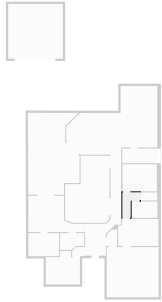
▼ **Bathroom**
Ground Floor

WIDTH: 2.80 m • LENGTH: 1.79 m
AREA: 5.01 m² • PERIMETER: 9.18 m



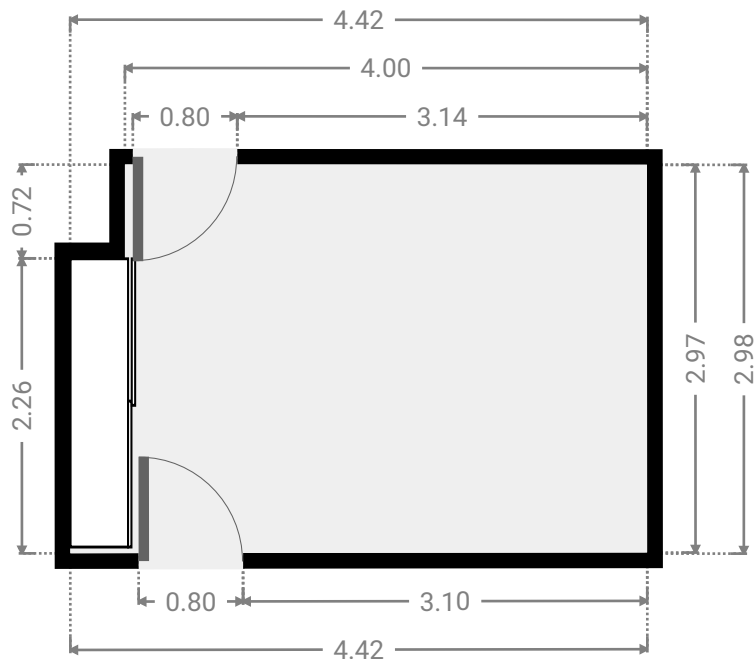
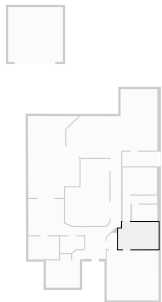
▼ **Hall**
Ground Floor

WIDTH: 1.90 m • LENGTH: 2.75 m
AREA: 3.30 m² • PERIMETER: 9.30 m



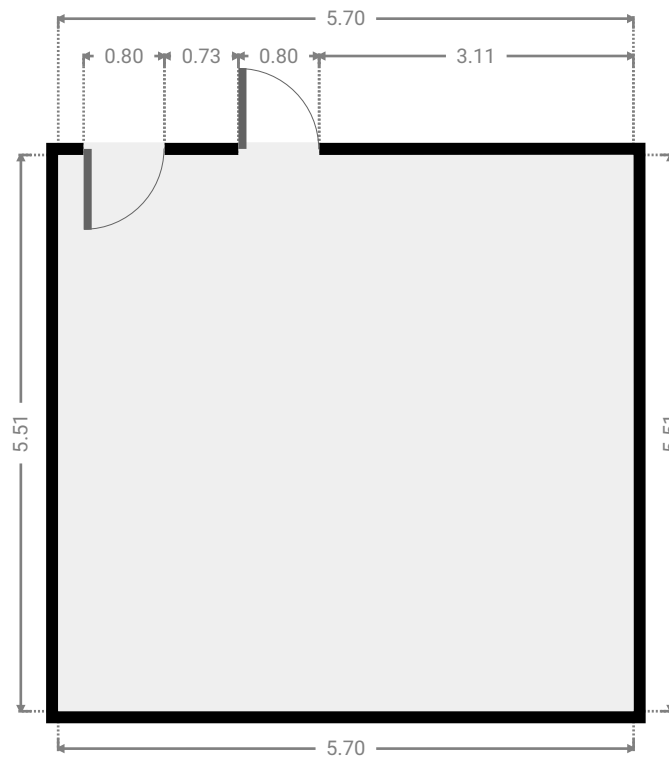
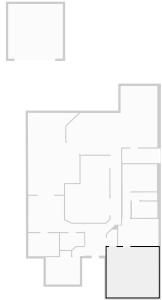
▼ **Bedroom**
Ground Floor

WIDTH: 4.42 m • LENGTH: 2.98 m
AREA: 12.84 m² • PERIMETER: 14.79 m



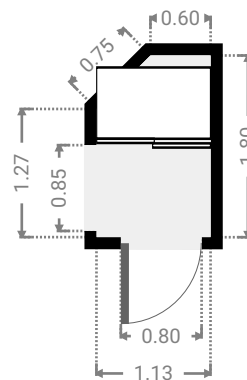
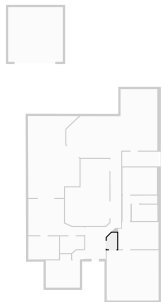
▼ Living Room Ground Floor

WIDTH: 5.70 m • LENGTH: 5.51 m
AREA: 31.40 m² • PERIMETER: 22.42 m



▼ Hall Ground Floor

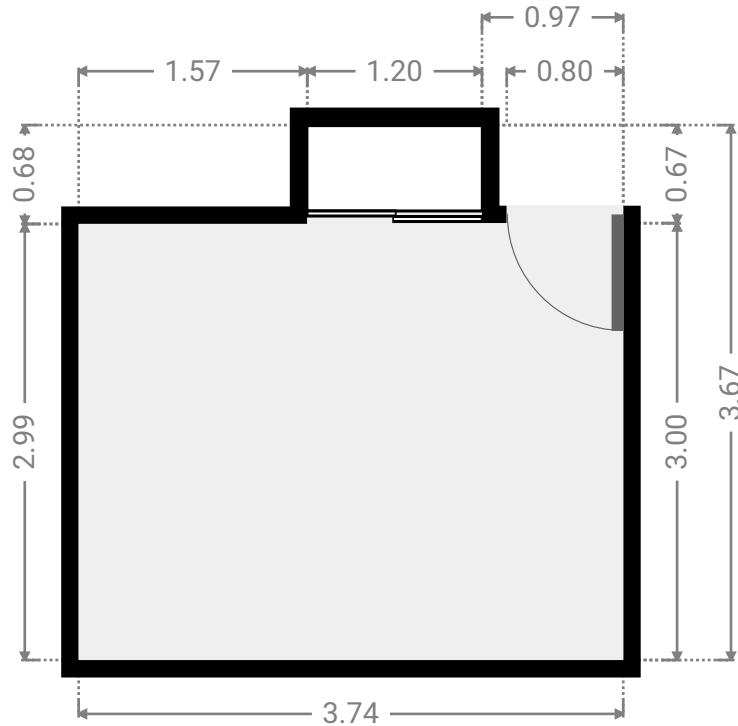
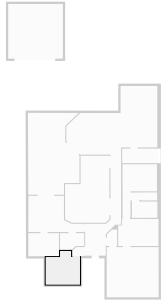
WIDTH: 1.13 m • LENGTH: 1.80 m
AREA: 1.89 m² • PERIMETER: 5.55 m



FLOORS: 1

▼ **Bedroom**
Ground Floor

WIDTH: 3.74 m • LENGTH: 3.67 m
AREA: 12.02 m² • PERIMETER: 14.83 m



▼ **Hall**
Ground Floor

WIDTH: 1.30 m • LENGTH: 0.98 m
AREA: 1.19 m² • PERIMETER: 4.32 m

