

14 Fitzgerald Street

SUBMITTED BY

Ray White Rockhampton Casey
stockers@cqoz.com

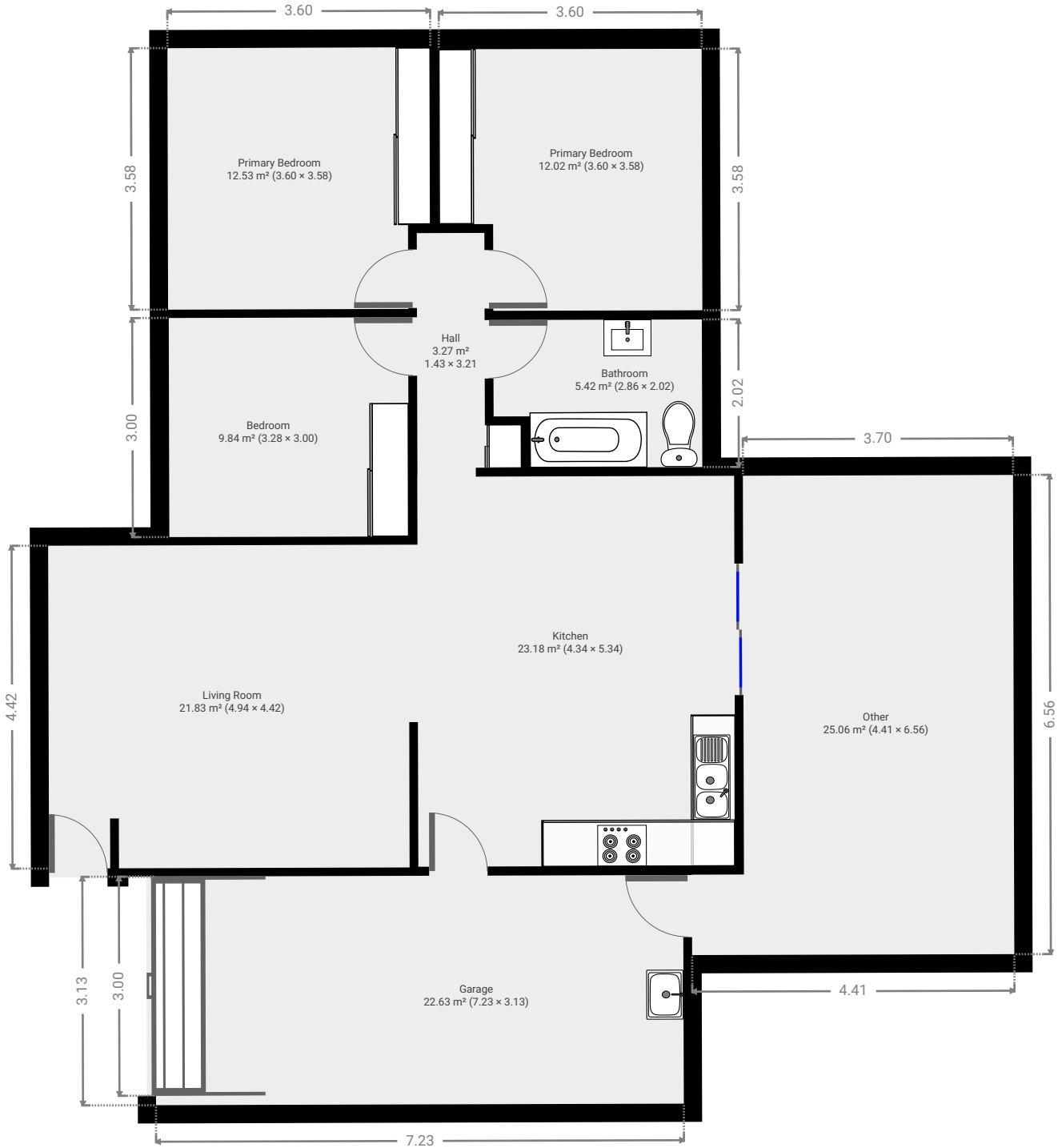
CREATED ON

2022-06-01

Floors

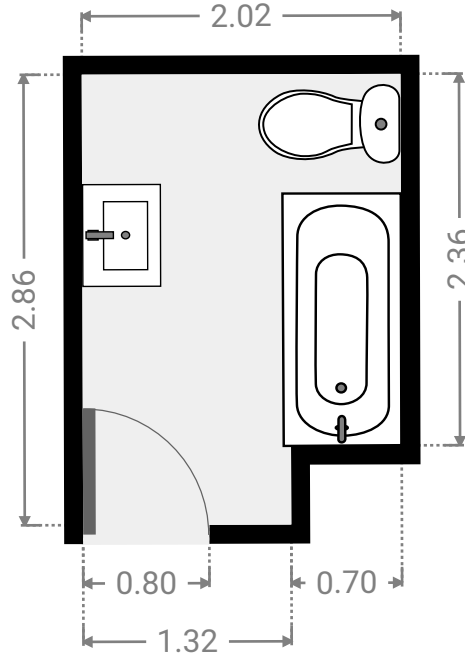
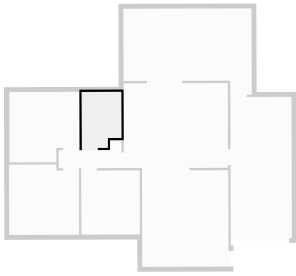
1

▼ Ground Floor



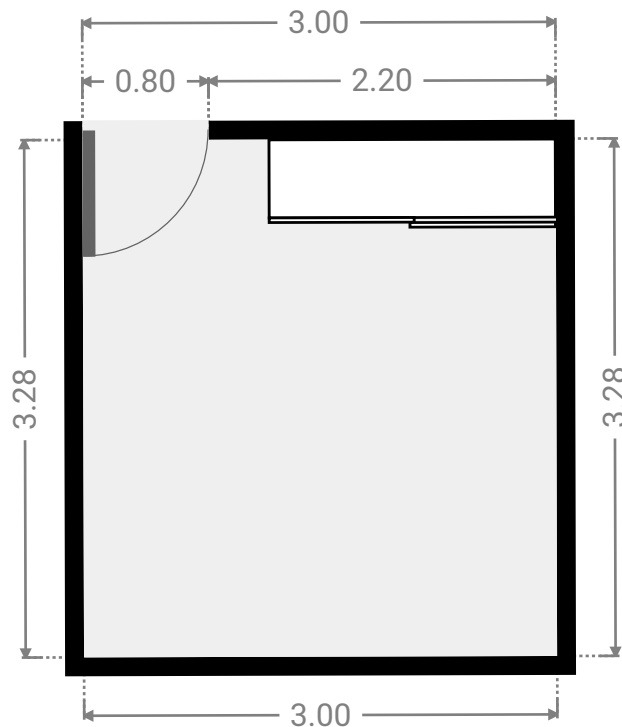
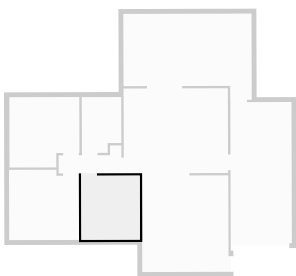
▼ **Bathroom**
Ground Floor

WIDTH: 2.02 m • LENGTH: 2.86 m
AREA: 5.42 m² • PERIMETER: 9.75 m



▼ **Bedroom**
Ground Floor

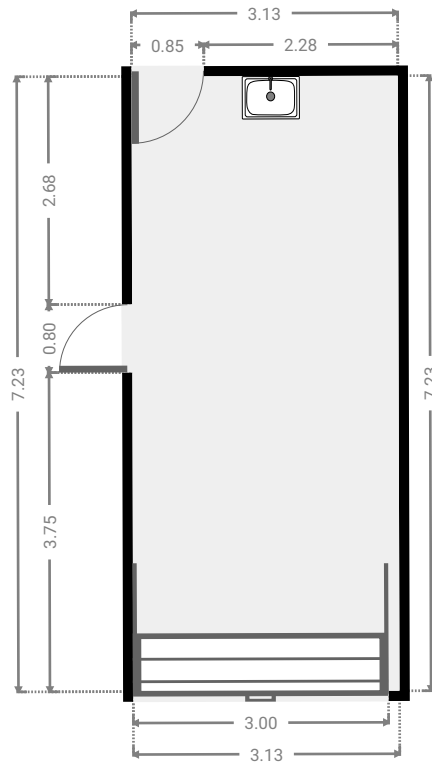
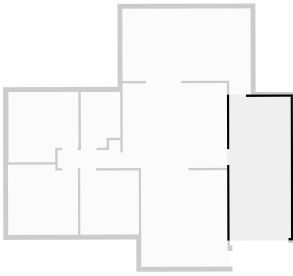
WIDTH: 3.00 m • LENGTH: 3.28 m
AREA: 9.84 m² • PERIMETER: 12.56 m



FLOORS: 1

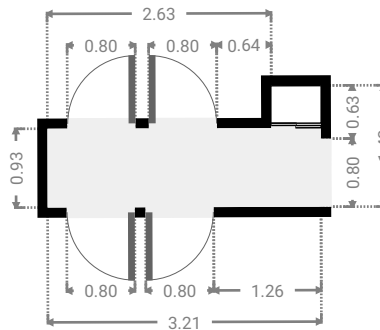
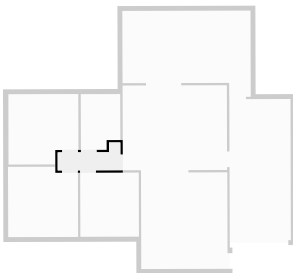
▼ **Garage**
Ground Floor

WIDTH: 3.13 m • LENGTH: 7.23 m
AREA: 22.63 m² • PERIMETER: 20.72 m



▼ **Hall**
Ground Floor

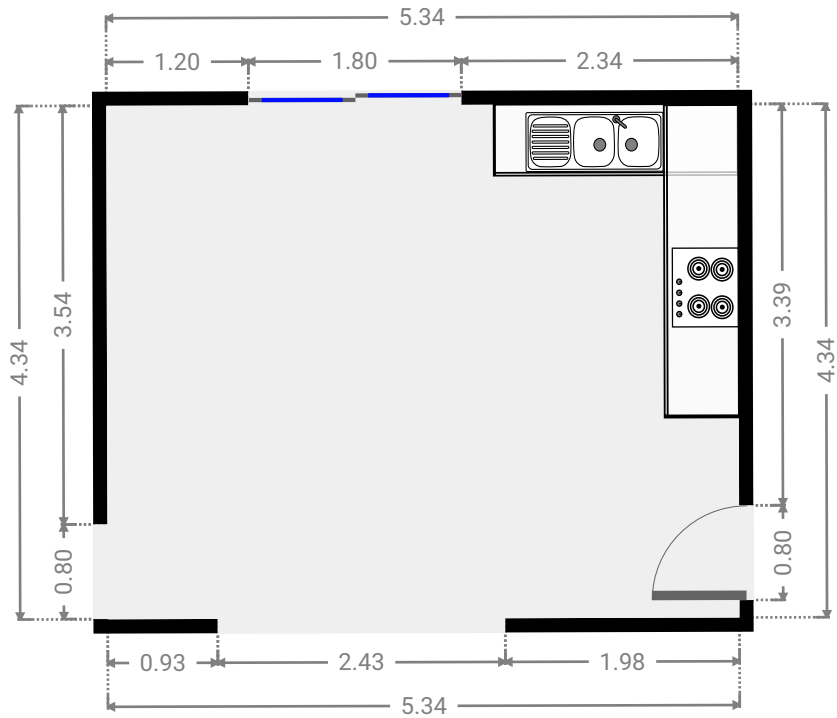
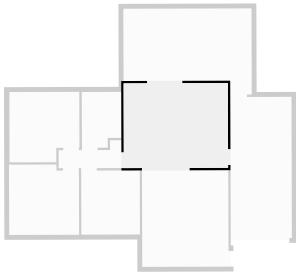
WIDTH: 3.21 m • LENGTH: 1.43 m
AREA: 3.27 m² • PERIMETER: 9.28 m



FLOORS: 1

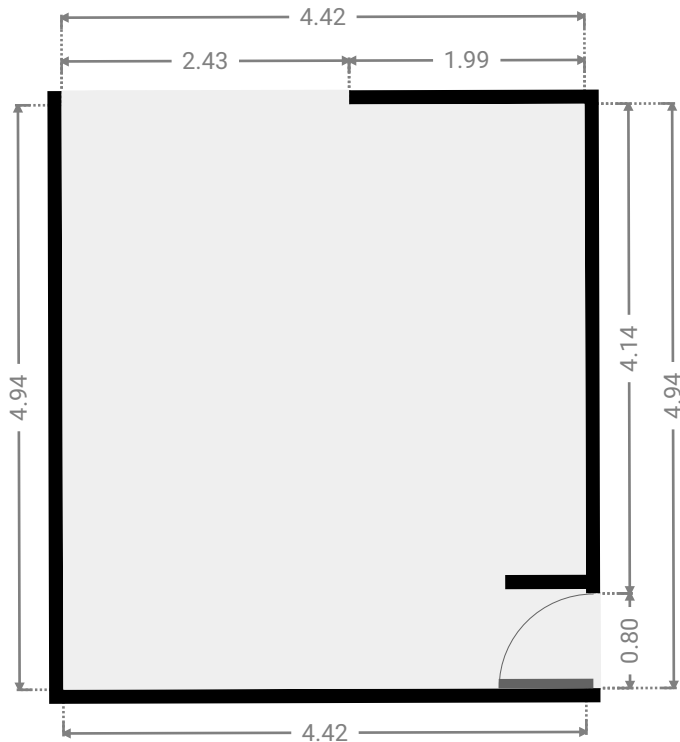
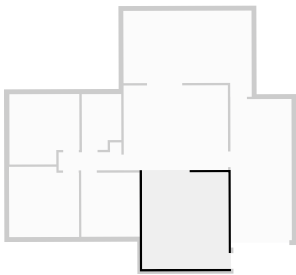
▼ **Kitchen**
Ground Floor

WIDTH: 5.34 m • LENGTH: 4.34 m
AREA: 23.18 m² • PERIMETER: 19.36 m



▼ **Living Room**
Ground Floor

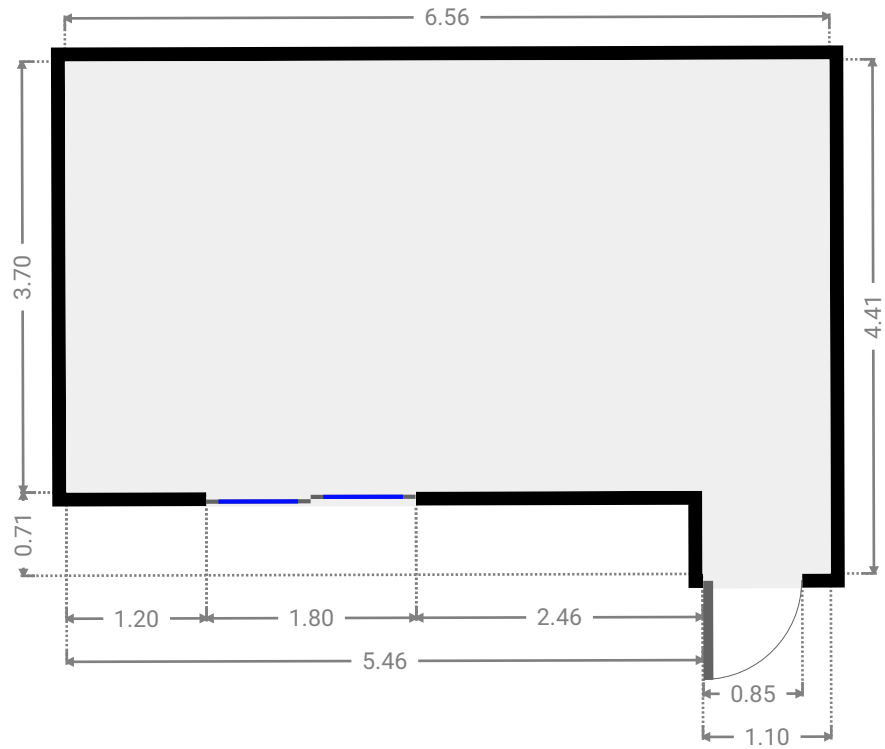
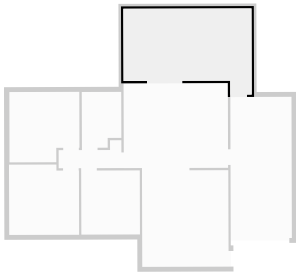
WIDTH: 4.42 m • LENGTH: 4.94 m
AREA: 21.83 m² • PERIMETER: 18.72 m



FLOORS: 1

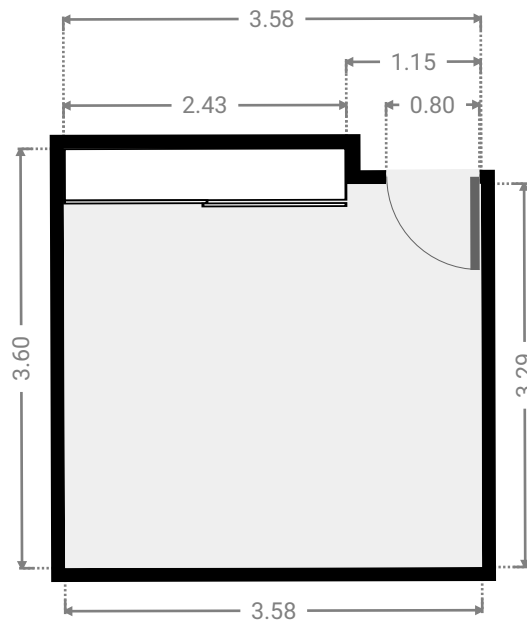
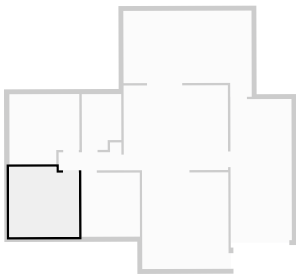
▼ Other
Ground Floor

WIDTH: 6.56 m • LENGTH: 4.41 m
AREA: 25.06 m² • PERIMETER: 21.95 m



▼ Primary Bedroom
Ground Floor

WIDTH: 3.58 m • LENGTH: 3.60 m
AREA: 12.53 m² • PERIMETER: 14.36 m



▼ **Primary Bedroom**
Ground Floor

WIDTH: 3.58 m • LENGTH: 3.60 m
AREA: 12.02 m² • PERIMETER: 14.36 m

