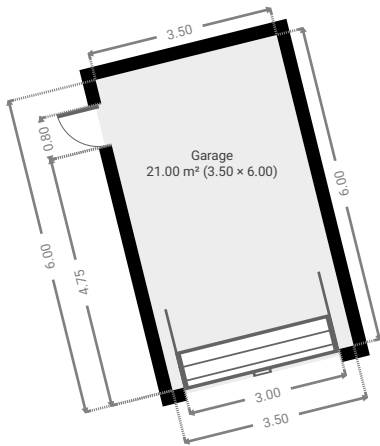


14 Blyth Avenue

Created on
2021-09-28

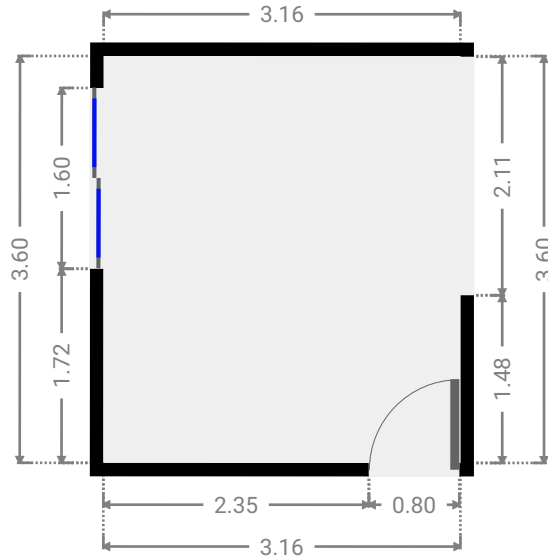
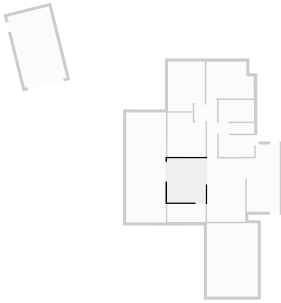
Floors
1

▼ Ground Floor



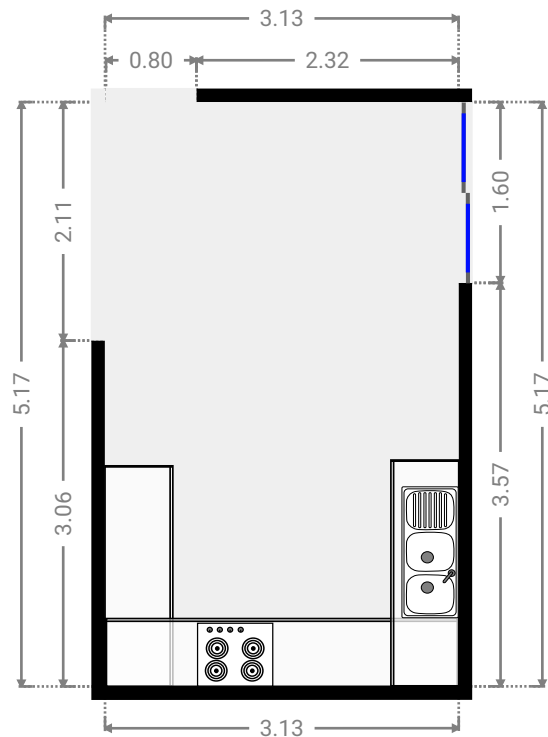
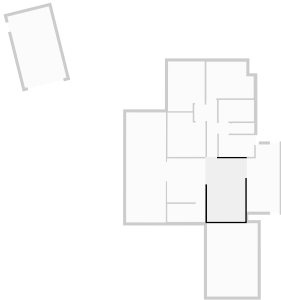
▼ Living Room
Ground Floor

WIDTH: 3.16 m • LENGTH: 3.60 m
AREA: 11.37 m² • PERIMETER: 13.52 m



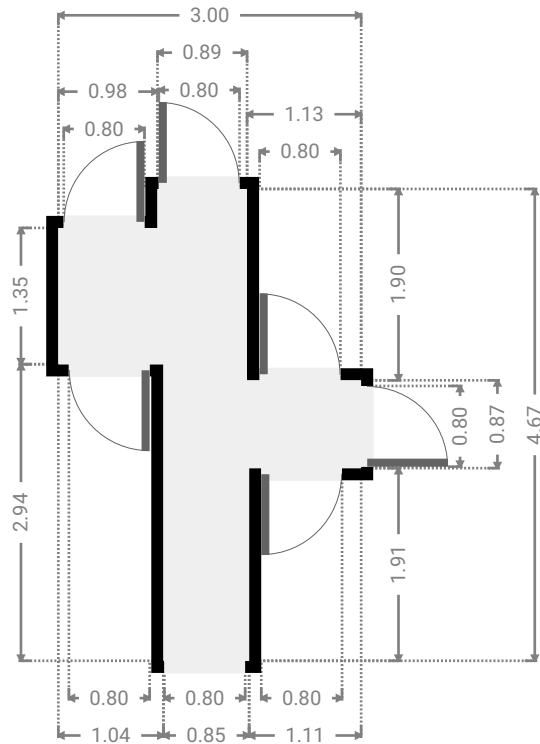
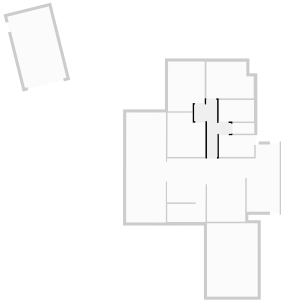
▼ Kitchen
Ground Floor

WIDTH: 3.13 m • LENGTH: 5.17 m
AREA: 16.18 m² • PERIMETER: 16.60 m



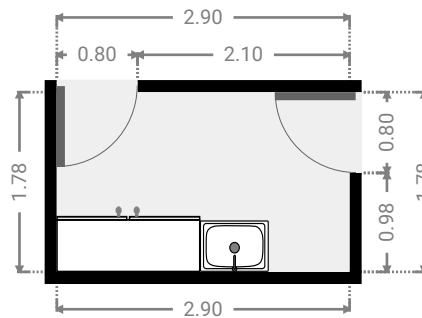
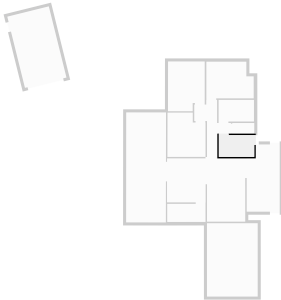
▼ Hall
Ground Floor

WIDTH: 3.00 m • LENGTH: 4.67 m
AREA: 6.32 m² • PERIMETER: 15.35 m



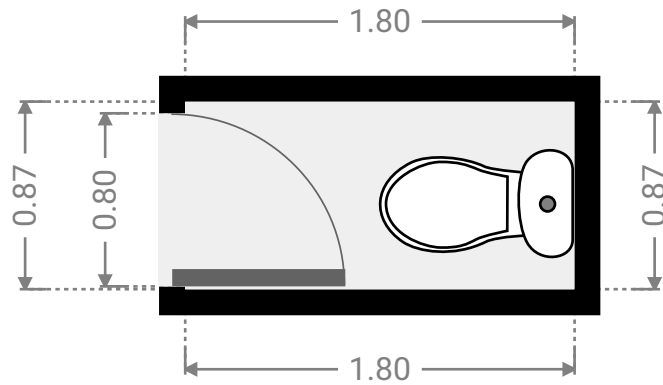
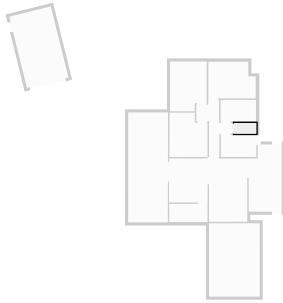
▼ Laundry Room
Ground Floor

WIDTH: 2.90 m • LENGTH: 1.78 m
AREA: 5.16 m² • PERIMETER: 9.36 m



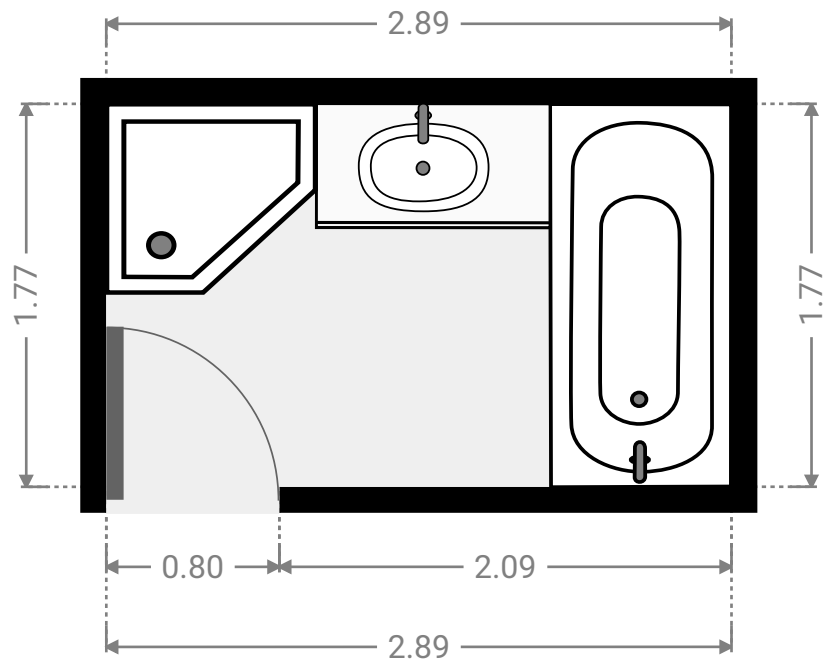
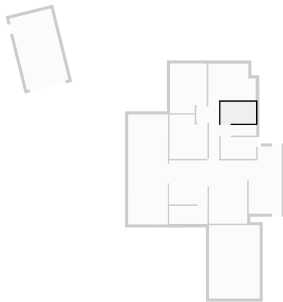
▼ **Toilet**
Ground Floor

WIDTH: 1.80 m • LENGTH: 0.87 m
AREA: 1.56 m² • PERIMETER: 5.33 m



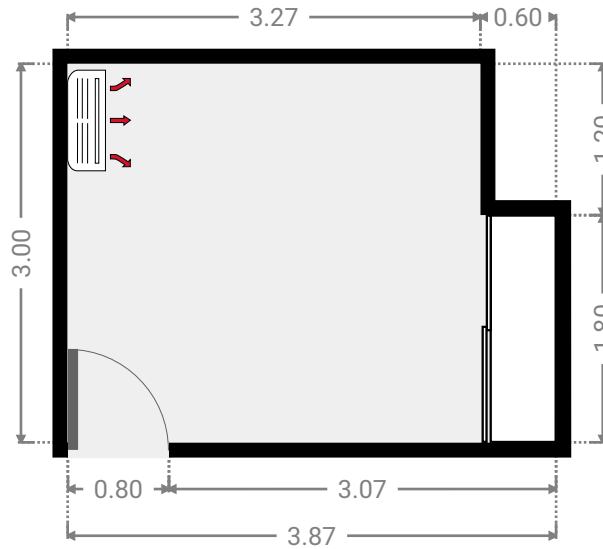
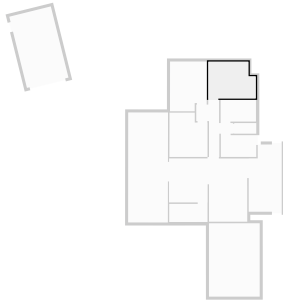
▼ **Bathroom**
Ground Floor

WIDTH: 2.89 m • LENGTH: 1.77 m
AREA: 5.12 m² • PERIMETER: 9.32 m



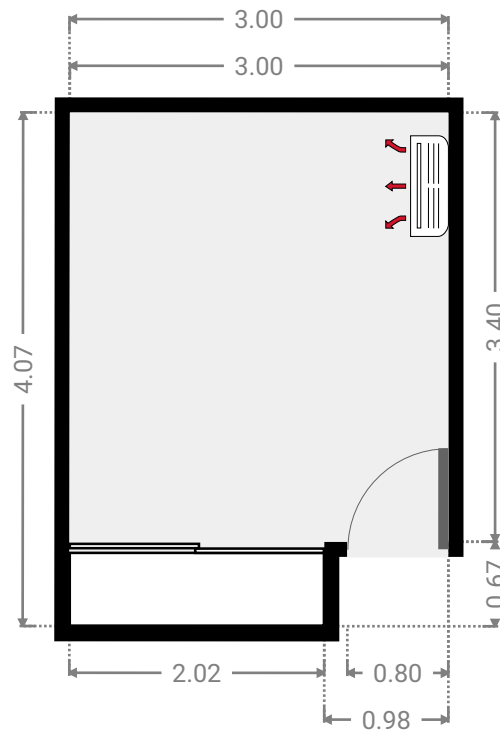
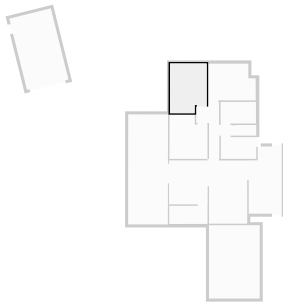
▼ **Bedroom**
Ground Floor

WIDTH: 3.87 m • LENGTH: 3.00 m
AREA: 10.89 m² • PERIMETER: 13.74 m



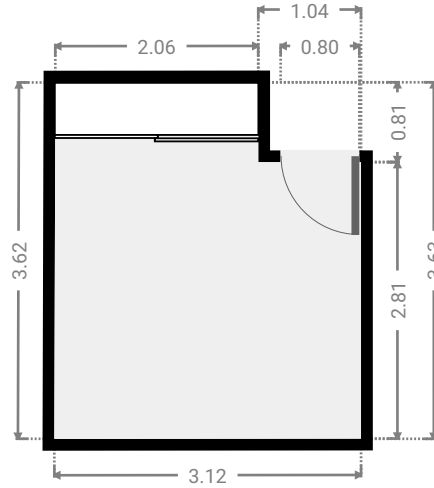
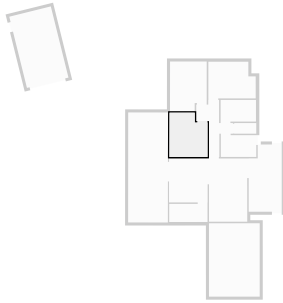
▼ **Bedroom**
Ground Floor

WIDTH: 3.00 m • LENGTH: 4.07 m
AREA: 11.56 m² • PERIMETER: 14.14 m



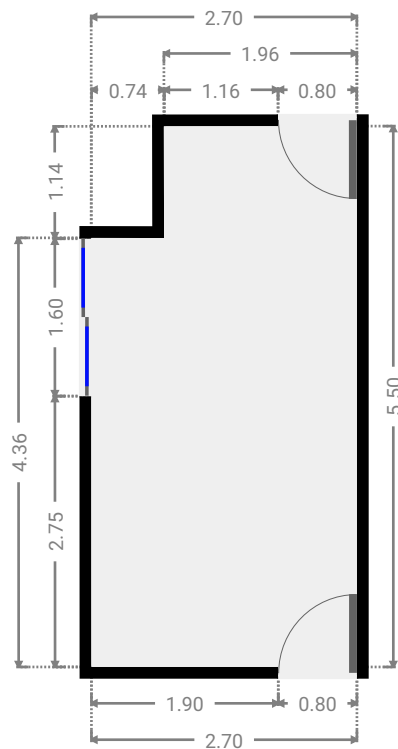
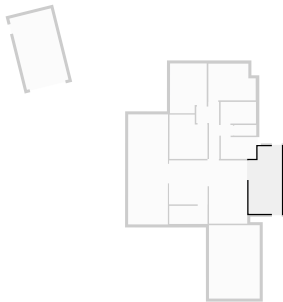
▼ **Bedroom**
Ground Floor

WIDTH: 3.12 m • LENGTH: 3.63 m
AREA: 10.44 m² • PERIMETER: 13.47 m



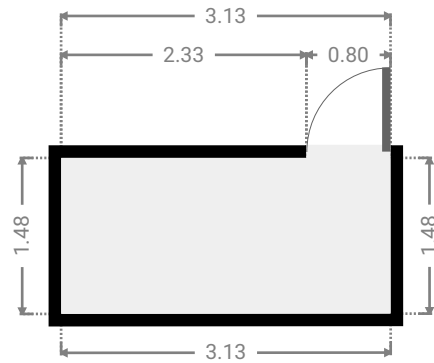
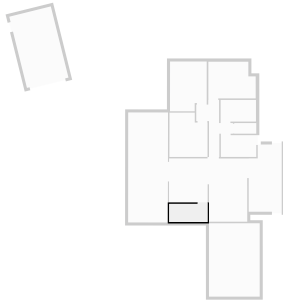
▼ **Other**
Ground Floor

WIDTH: 2.70 m • LENGTH: 5.50 m
AREA: 14.01 m² • PERIMETER: 16.40 m



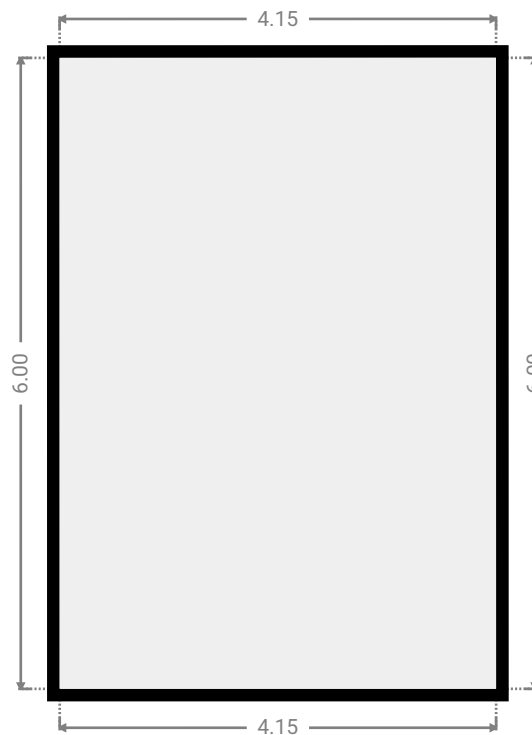
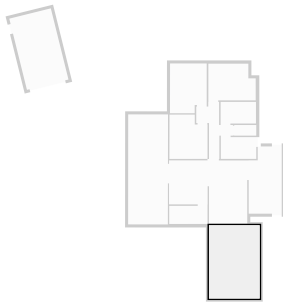
▼ Other
Ground Floor

WIDTH: 3.13 m • LENGTH: 1.48 m
AREA: 4.64 m² • PERIMETER: 9.23 m



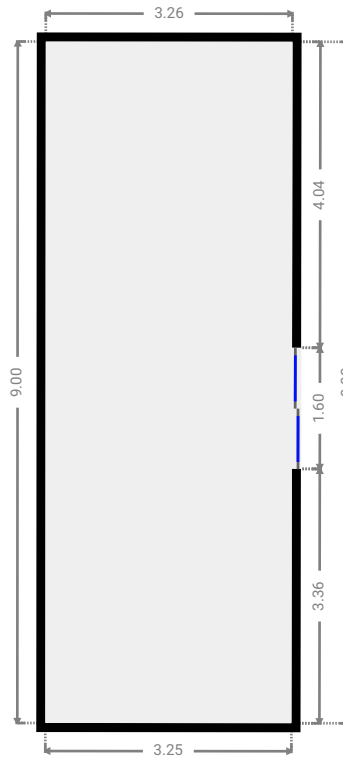
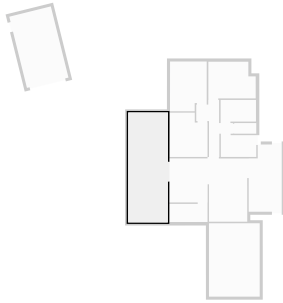
▼ Carport
Ground Floor

WIDTH: 4.15 m • LENGTH: 6.00 m
AREA: 24.90 m² • PERIMETER: 20.30 m



▼ Other
Ground Floor

WIDTH: 3.26 m • LENGTH: 9.00 m
AREA: 29.28 m² • PERIMETER: 24.51 m



▼ Garage
Ground Floor

WIDTH: 3.50 m • LENGTH: 6.00 m
AREA: 21.00 m² • PERIMETER: 19.00 m

