

13a Rosedale Street

SUBMITTED BY

Ray White Rockhampton Casey
stockers@cqoz.com

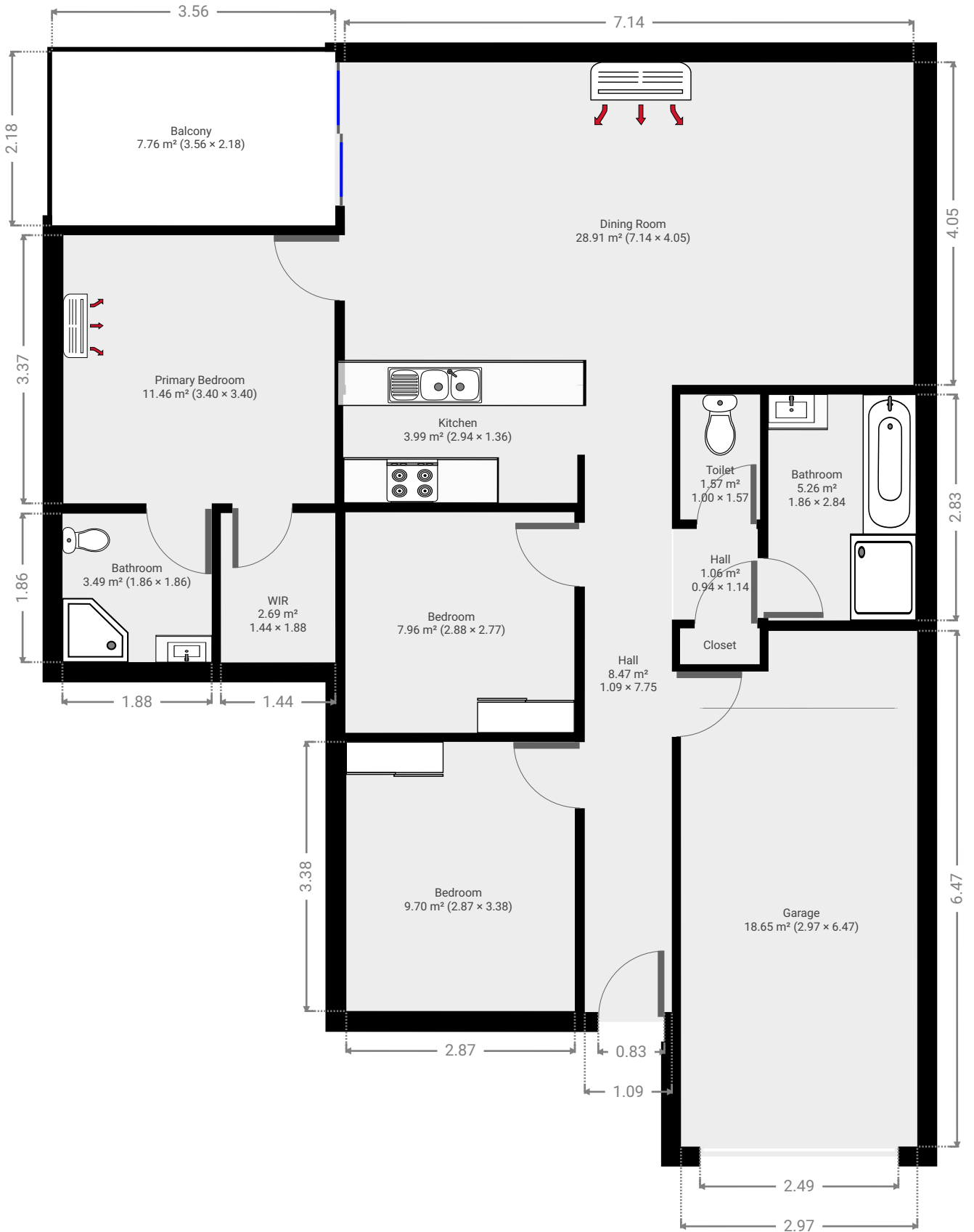
CREATED ON

2016-11-25

Floors

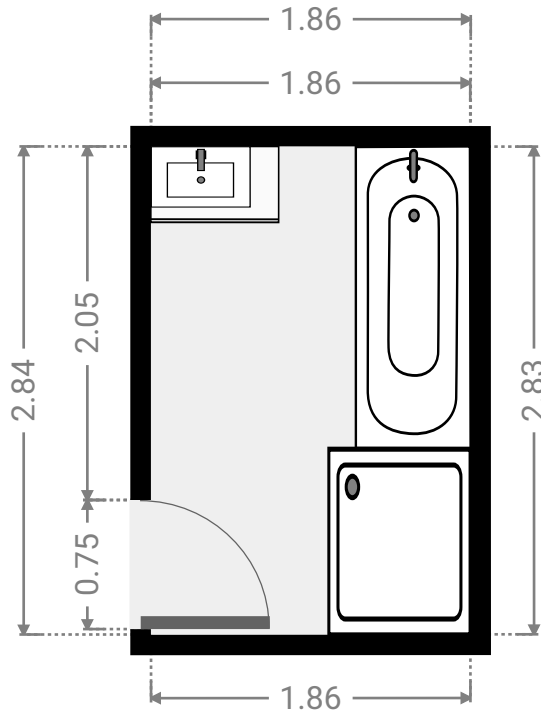
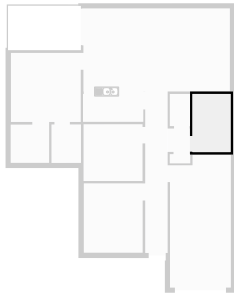
1

▼ Ground Floor



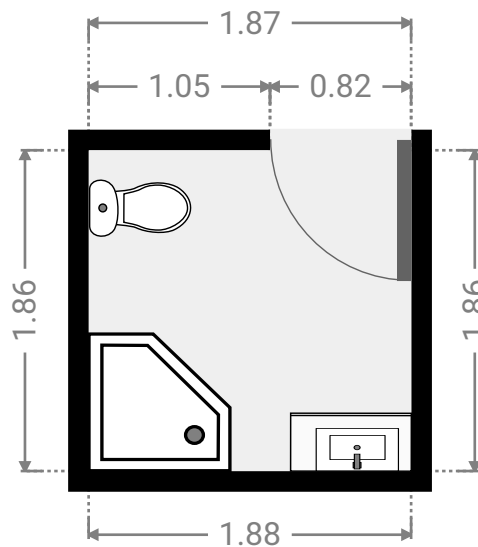
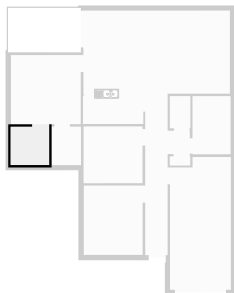
▼ **Bathroom**
Ground Floor

WIDTH: 1.86 m • LENGTH: 2.84 m
AREA: 5.26 m² • PERIMETER: 9.38 m



▼ **Bathroom**
Ground Floor

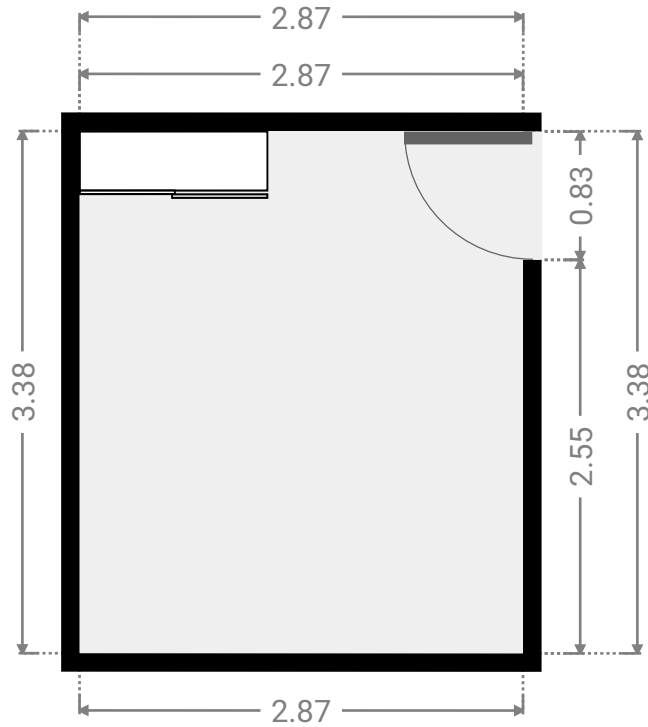
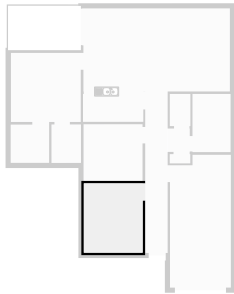
WIDTH: 1.86 m • LENGTH: 1.86 m
AREA: 3.49 m² • PERIMETER: 7.48 m



FLOORS: 1

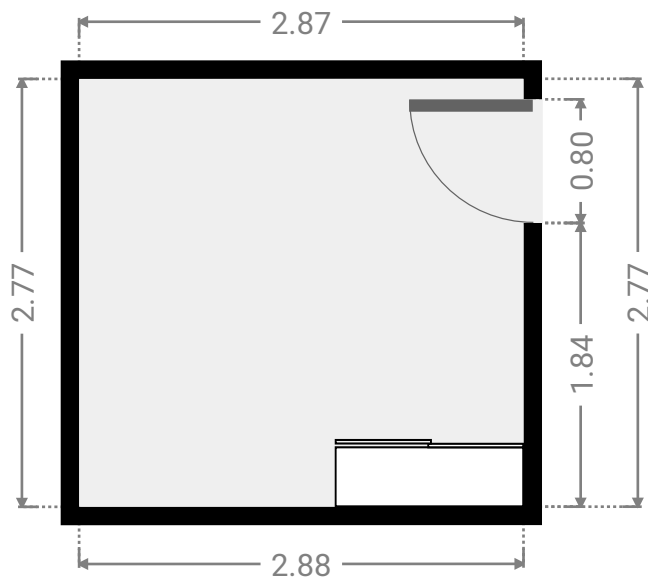
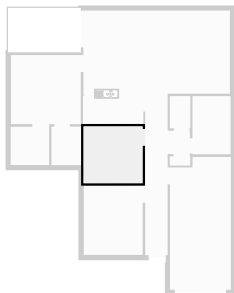
▼ **Bedroom**
Ground Floor

WIDTH: 2.87 m • LENGTH: 3.38 m
AREA: 9.70 m² • PERIMETER: 12.50 m



▼ **Bedroom**
Ground Floor

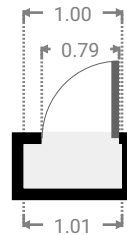
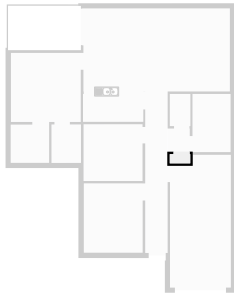
WIDTH: 2.88 m • LENGTH: 2.77 m
AREA: 7.96 m² • PERIMETER: 11.29 m



FLOORS: 1

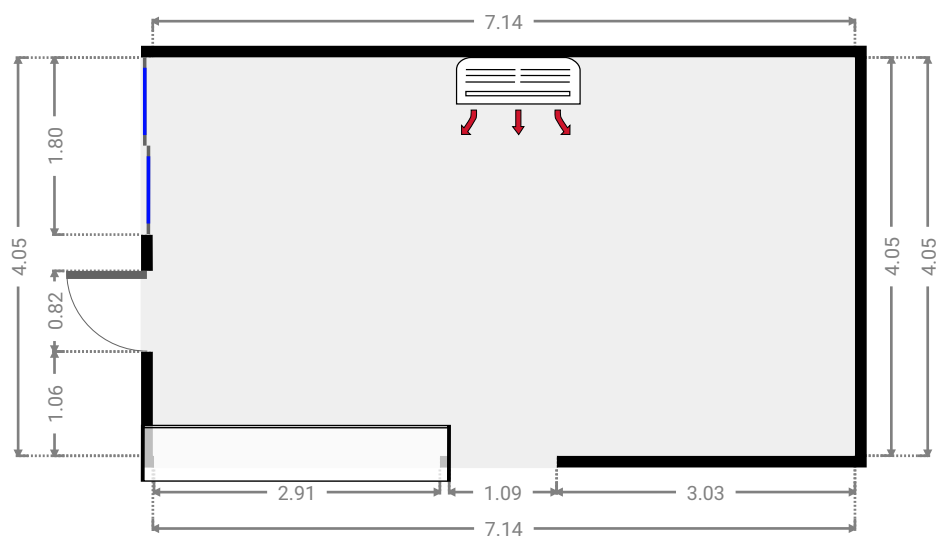
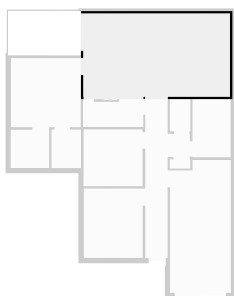
▼ Closet
Ground Floor

WIDTH: 1.00 m • LENGTH: 0.46 m
AREA: 0.45 m² • PERIMETER: 2.90 m



▼ Dining Room
Ground Floor

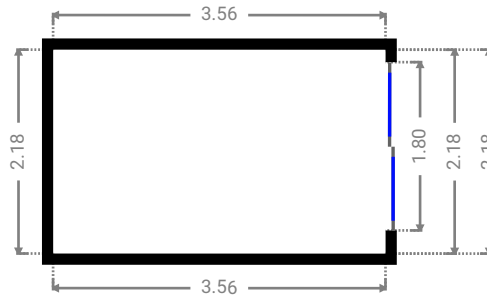
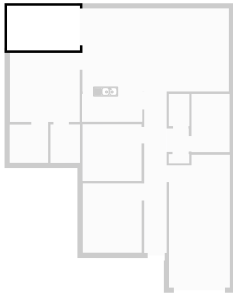
WIDTH: 7.14 m • LENGTH: 4.05 m
AREA: 28.91 m² • PERIMETER: 22.38 m



FLOORS: 1

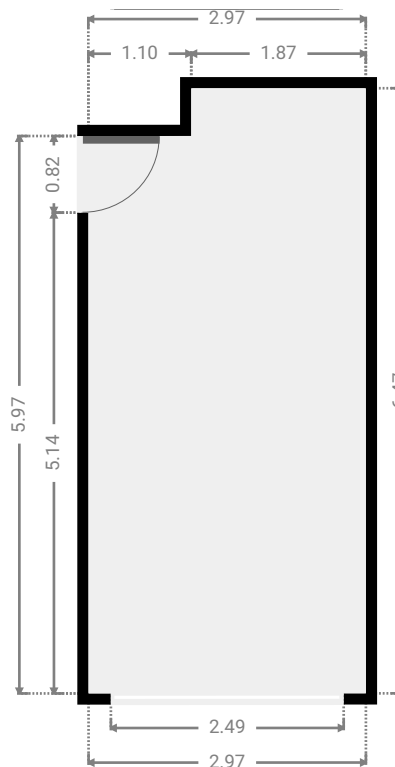
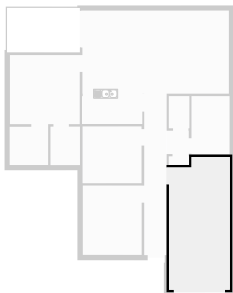
▼ **Balcony**
Ground Floor

WIDTH: 3.56 m • LENGTH: 2.18 m
AREA: 7.76 m² • PERIMETER: 11.47 m



▼ **Garage**
Ground Floor

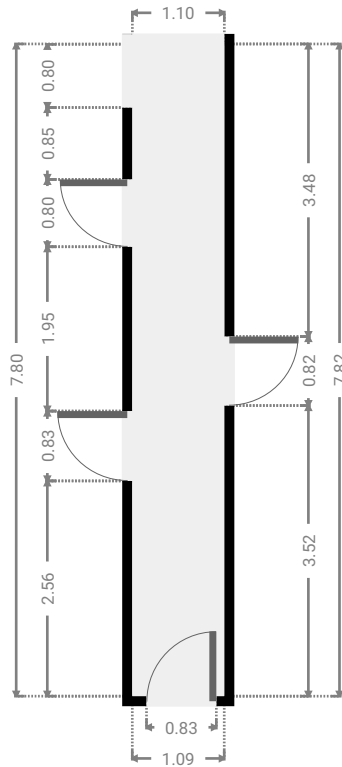
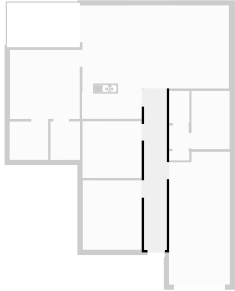
WIDTH: 2.97 m • LENGTH: 6.47 m • CEILING HEIGHT: 2.17 m
AREA: 18.65 m² • PERIMETER: 18.88 m



FLOORS: 1

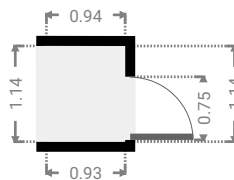
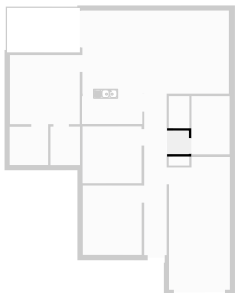
▼ Hall
Ground Floor

WIDTH: 1.09 m • LENGTH: 7.75 m
AREA: 8.47 m² • PERIMETER: 17.69 m



▼ Hall
Ground Floor

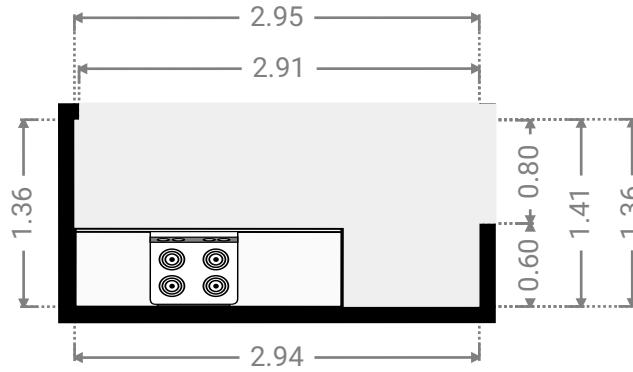
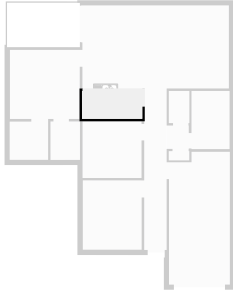
WIDTH: 0.94 m • LENGTH: 1.14 m
AREA: 1.06 m² • PERIMETER: 4.15 m



FLOORS: 1

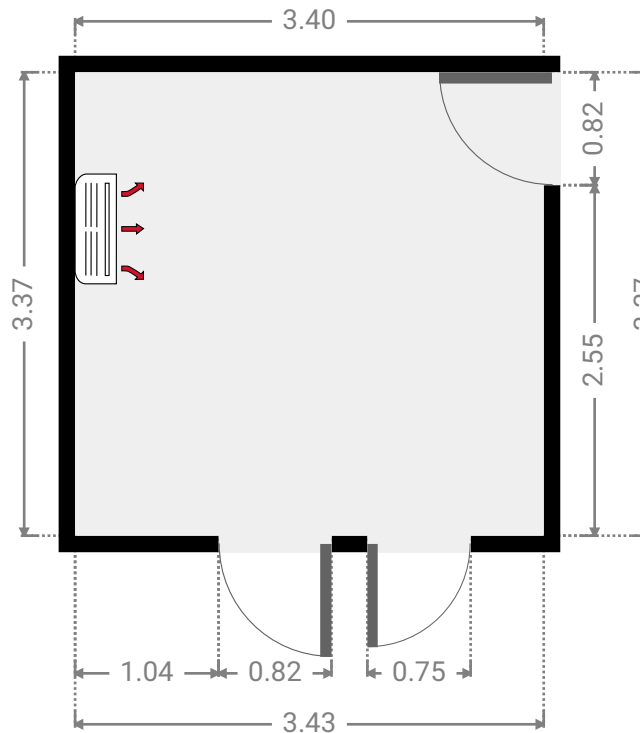
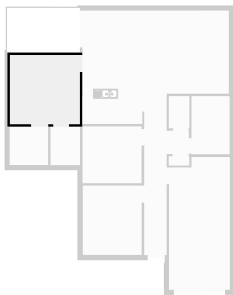
▼ Kitchen
Ground Floor

WIDTH: 2.94 m • LENGTH: 1.36 m
AREA: 3.99 m² • PERIMETER: 8.60 m



▼ Primary Bedroom
Ground Floor

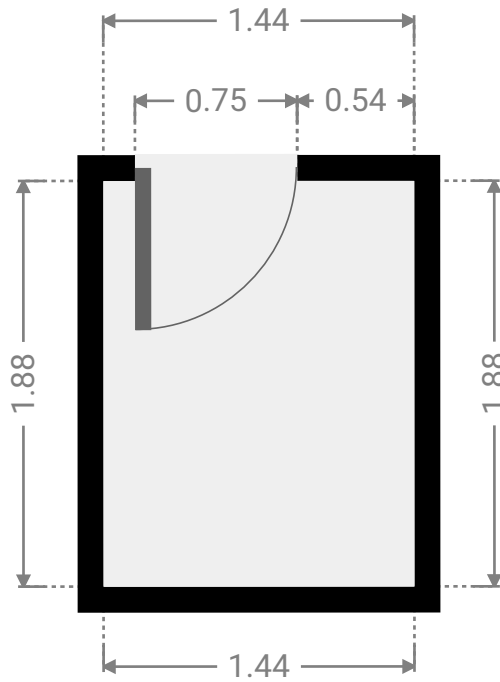
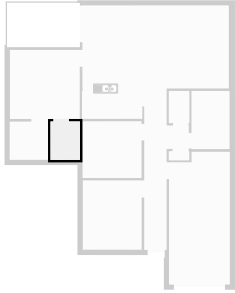
WIDTH: 3.40 m • LENGTH: 3.40 m
AREA: 11.46 m² • PERIMETER: 13.54 m



FLOORS: 1

▼ WIR
Ground Floor

WIDTH: 1.44 m • LENGTH: 1.88 m
AREA: 2.69 m² • PERIMETER: 6.62 m



▼ Toilet
Ground Floor

WIDTH: 1.00 m • LENGTH: 1.57 m
AREA: 1.57 m² • PERIMETER: 5.14 m

