

# 139 Lakes Creek Road

**SUBMITTED BY**

Ray White Rockhampton Casey  
stockers@cqoz.com

---

**CREATED ON**

2022-06-15

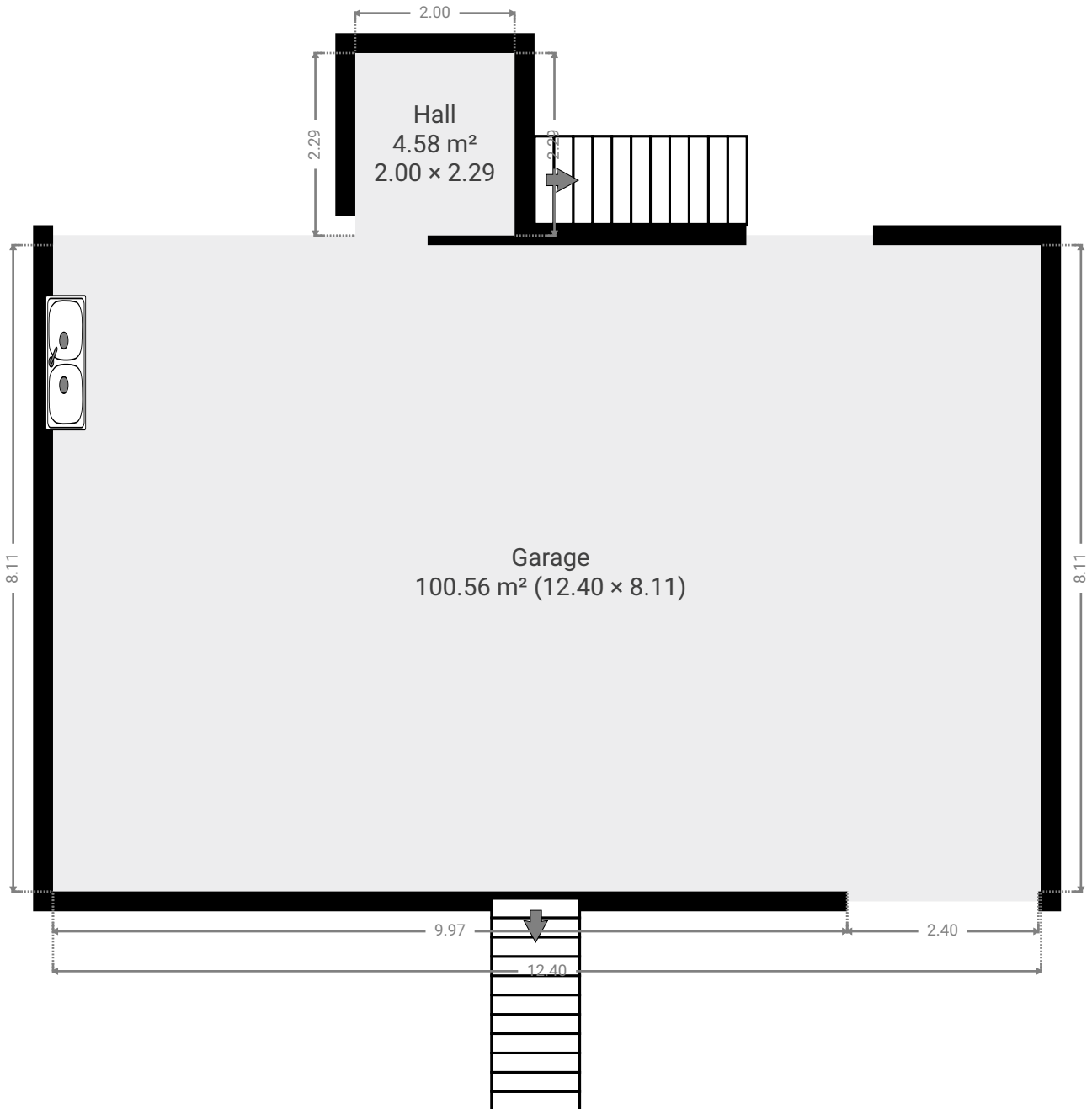
---

**Floors**

2

---

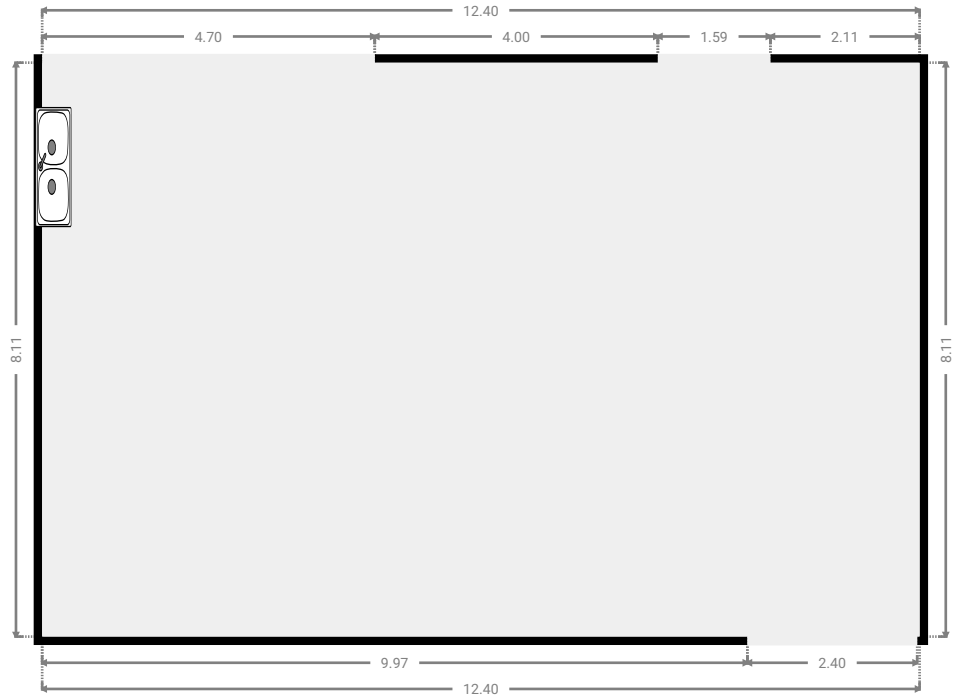
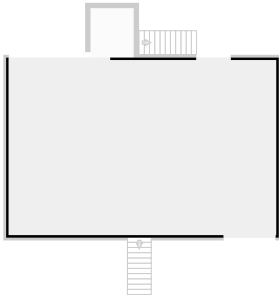
▼ Ground Floor



FLOORS: 2

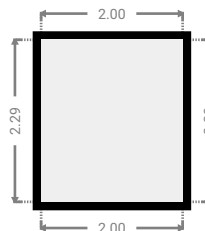
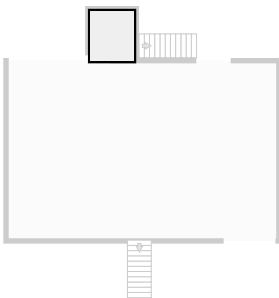
▼ **Garage**  
Ground Floor

WIDTH: 12.40 m • LENGTH: 8.11 m  
AREA: 100.56 m<sup>2</sup> • PERIMETER: 41.02 m



▼ **Hall**  
Ground Floor

WIDTH: 2.00 m • LENGTH: 2.29 m  
AREA: 4.58 m<sup>2</sup> • PERIMETER: 8.58 m

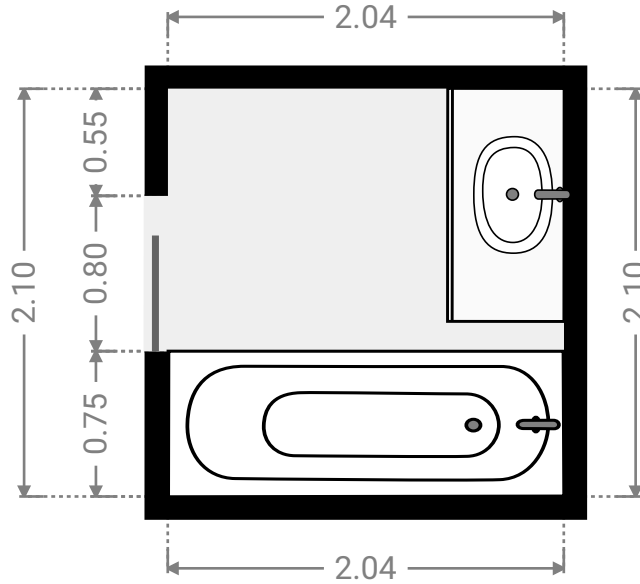
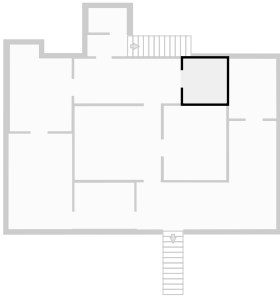


▼ 1st Floor



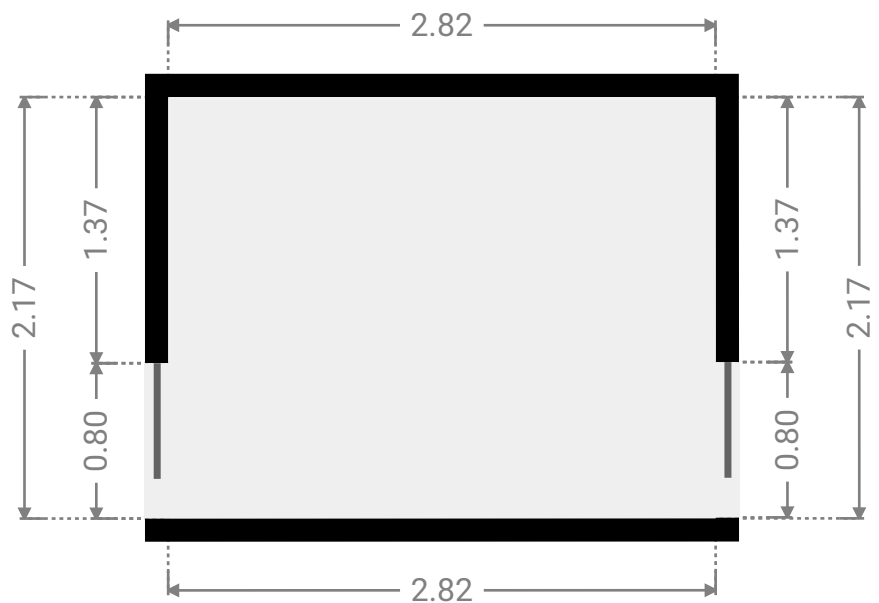
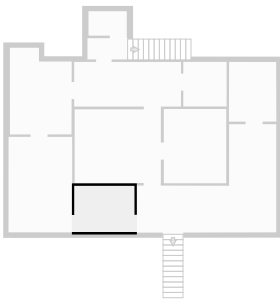
▼ **Bathroom**  
1st Floor

WIDTH: 2.04 m • LENGTH: 2.10 m  
AREA: 4.28 m<sup>2</sup> • PERIMETER: 8.28 m



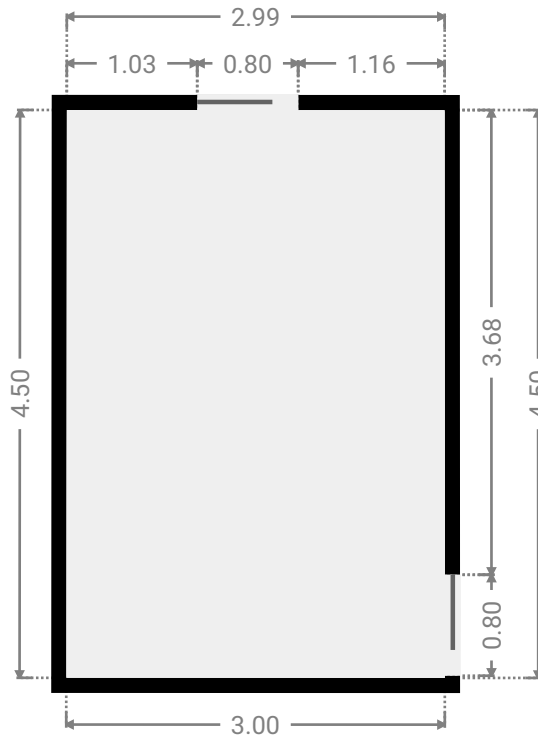
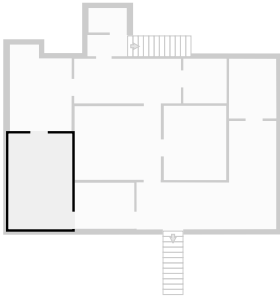
▼ **Bedroom**  
1st Floor

WIDTH: 2.82 m • LENGTH: 2.17 m  
AREA: 6.12 m<sup>2</sup> • PERIMETER: 9.98 m



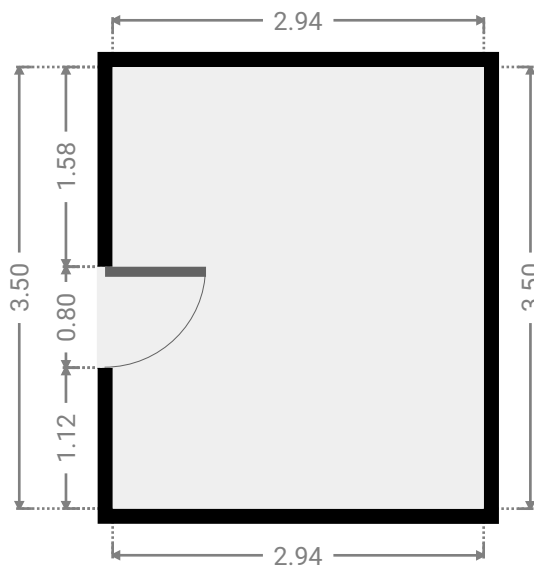
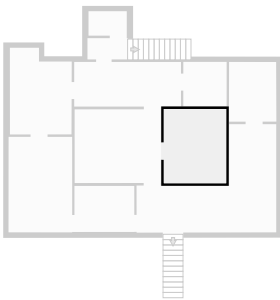
▼ **Bedroom**  
1st Floor

WIDTH: 3.00 m • LENGTH: 4.50 m  
AREA: 13.49 m<sup>2</sup> • PERIMETER: 14.99 m



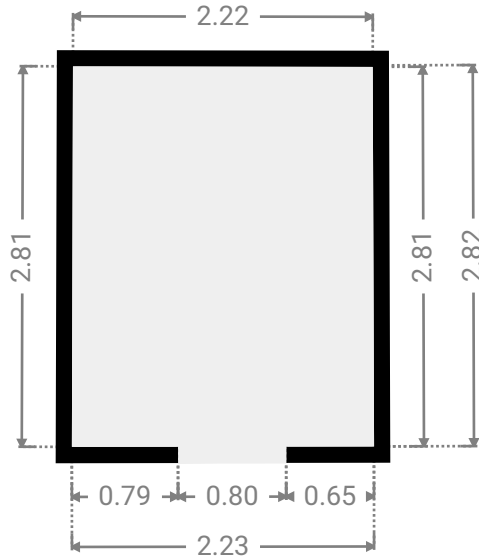
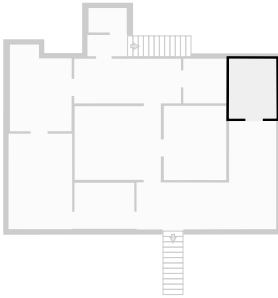
▼ **Bedroom**  
1st Floor

WIDTH: 2.94 m • LENGTH: 3.50 m  
AREA: 10.29 m<sup>2</sup> • PERIMETER: 12.88 m



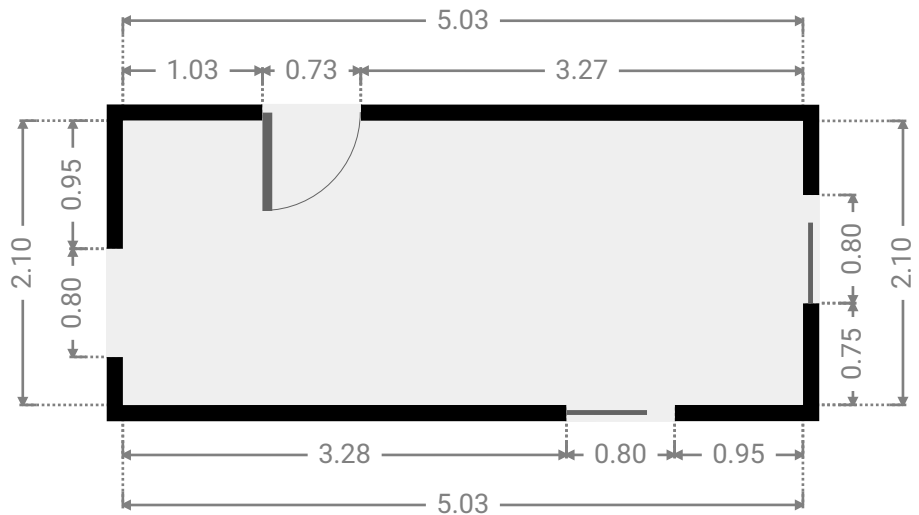
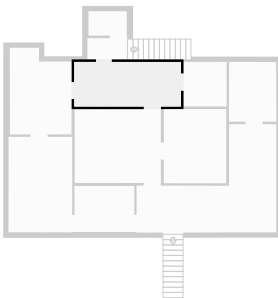
▼ **Bedroom**  
1st Floor

WIDTH: 2.23 m • LENGTH: 2.82 m  
AREA: 6.26 m<sup>2</sup> • PERIMETER: 10.07 m



▼ **Dining Room**  
1st Floor

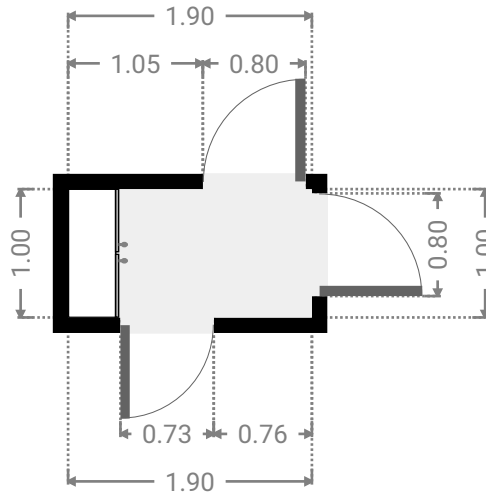
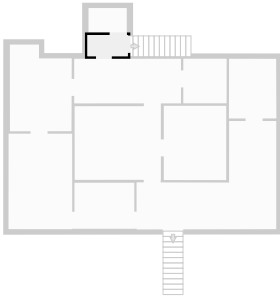
WIDTH: 5.03 m • LENGTH: 2.10 m  
AREA: 10.57 m<sup>2</sup> • PERIMETER: 14.26 m



FLOORS: 2

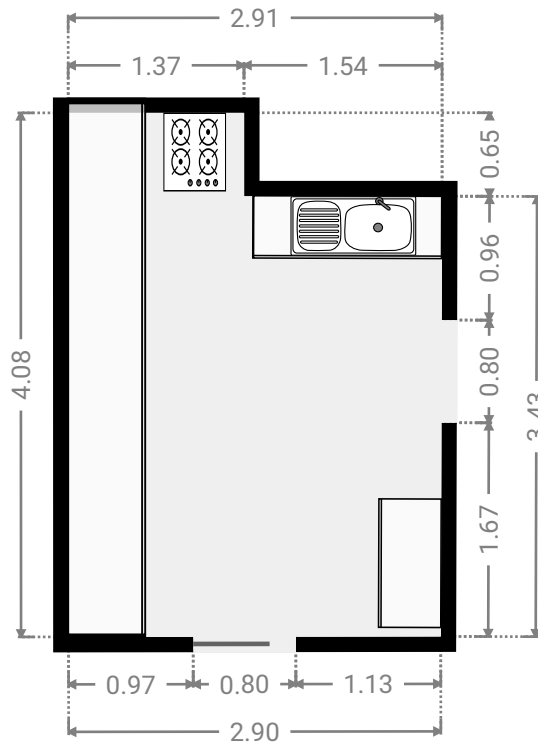
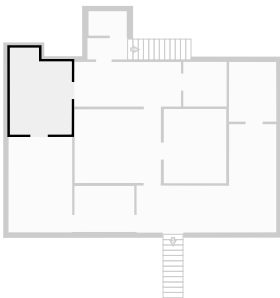
▼ **Hall**  
1st Floor

WIDTH: 1.90 m • LENGTH: 1.00 m  
AREA: 1.90 m<sup>2</sup> • PERIMETER: 5.80 m



▼ **Kitchen**  
1st Floor

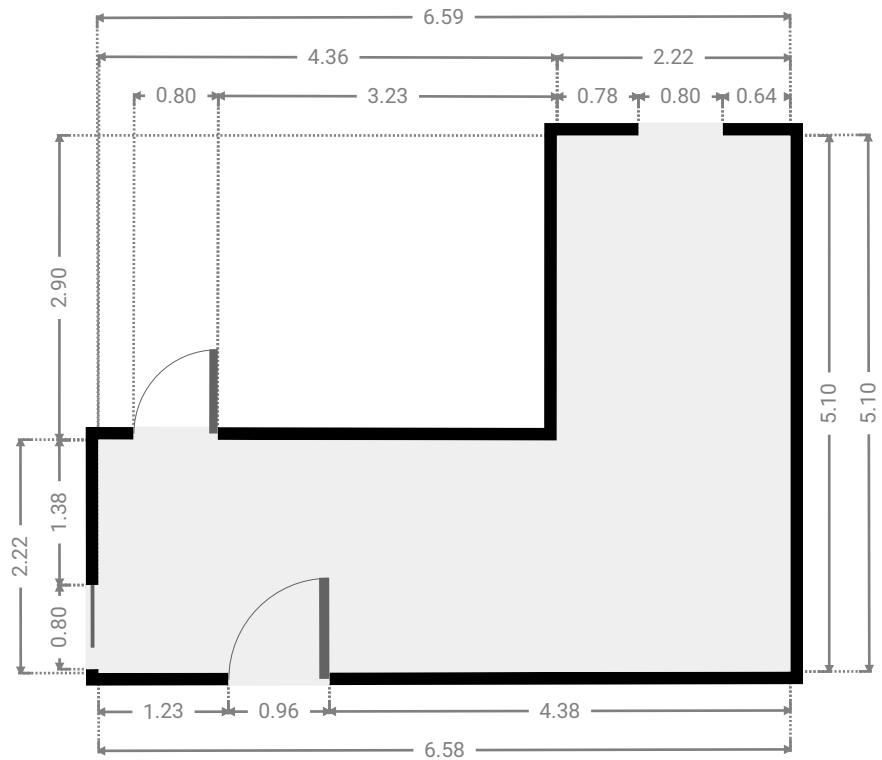
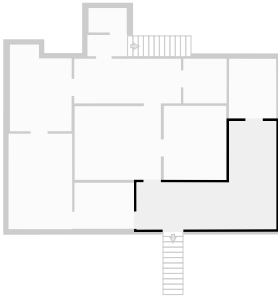
WIDTH: 2.91 m • LENGTH: 4.08 m  
AREA: 10.87 m<sup>2</sup> • PERIMETER: 13.98 m





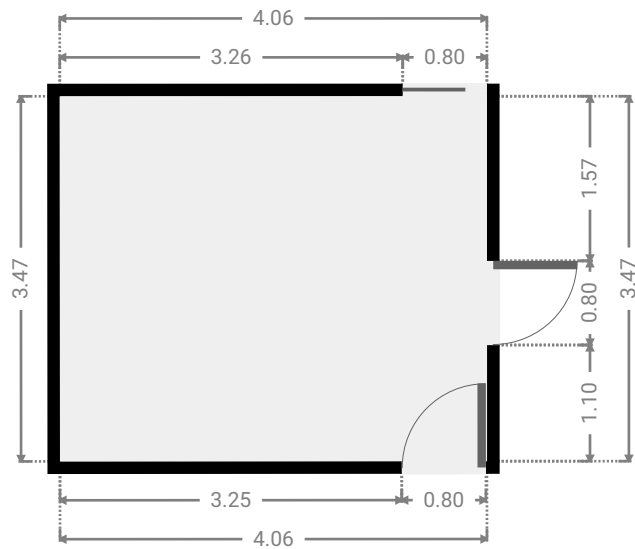
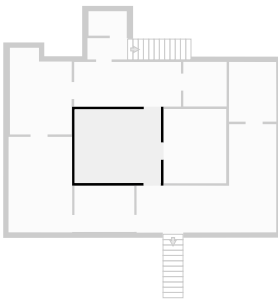
▼ Living Room  
1st Floor

WIDTH: 6.59 m • LENGTH: 5.10 m  
AREA: 20.96 m<sup>2</sup> • PERIMETER: 23.37 m



▼ Living Room  
1st Floor

WIDTH: 4.06 m • LENGTH: 3.47 m  
AREA: 14.10 m<sup>2</sup> • PERIMETER: 15.06 m



▼ Toilet  
1st Floor

WIDTH: 1.80 m • LENGTH: 1.15 m  
AREA: 2.07 m<sup>2</sup> • PERIMETER: 5.90 m

