

# 1324 Ridge lands Road

**SUBMITTED BY**

Ray White Rockhampton Casey  
stockers@cqoz.com

---

**CREATED ON**

2022-03-29

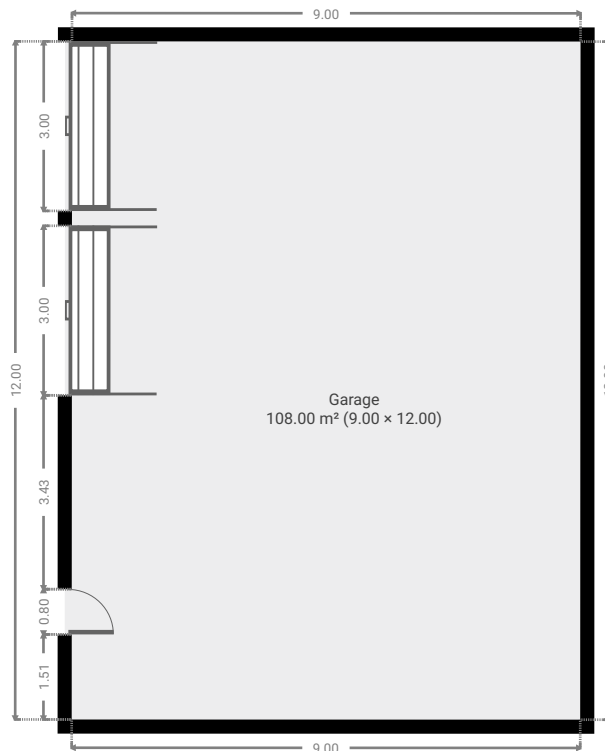
---

**Floors**

1

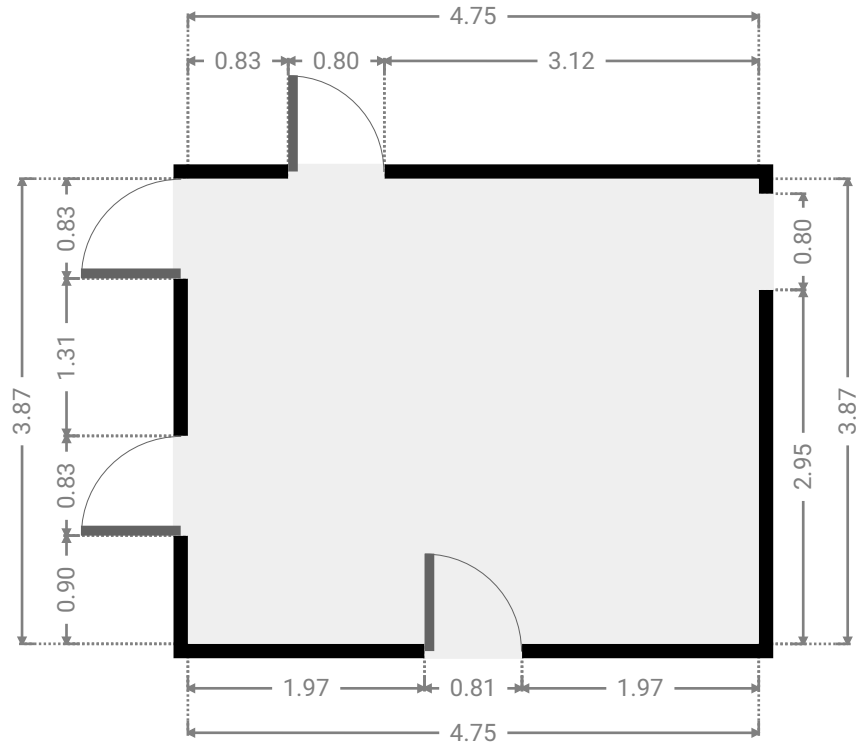
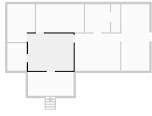
---

▼ Ground Floor



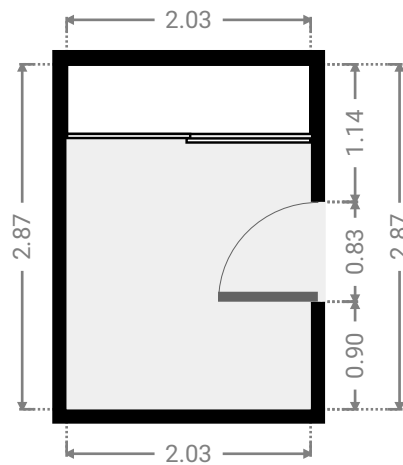
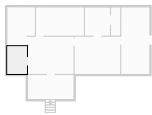
▼ **Living Room**  
Ground Floor

WIDTH: 4.75 m • LENGTH: 3.87 m  
AREA: 18.38 m<sup>2</sup> • PERIMETER: 17.24 m



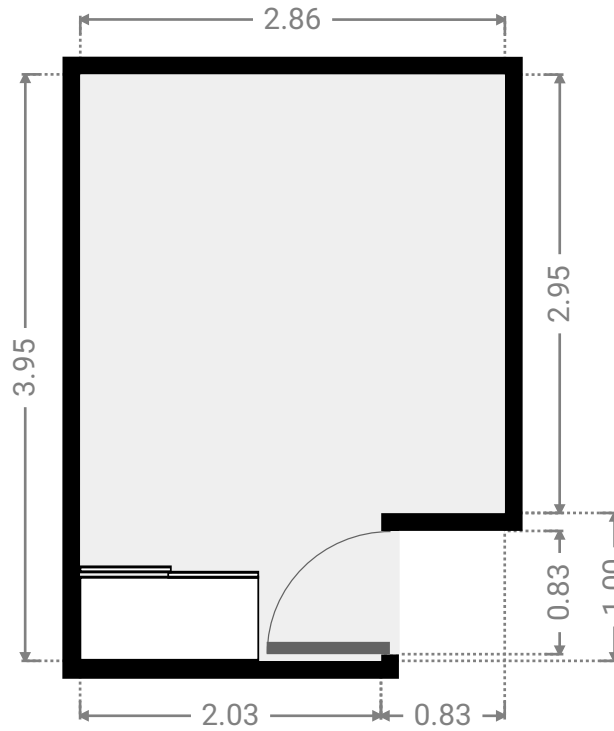
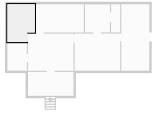
▼ **Bedroom**  
Ground Floor

WIDTH: 2.03 m • LENGTH: 2.87 m  
AREA: 5.83 m<sup>2</sup> • PERIMETER: 9.80 m



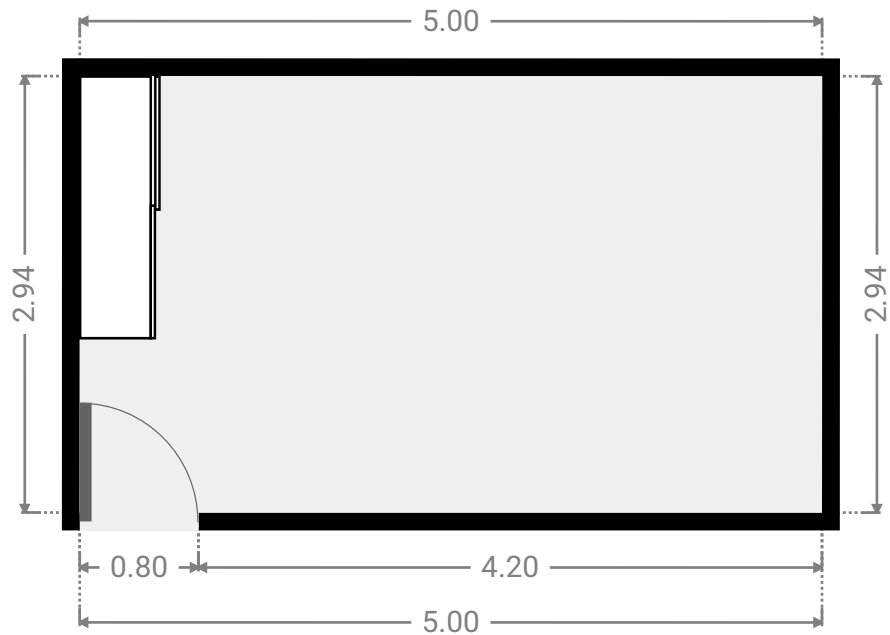
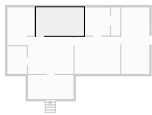
▼ **Bedroom**  
Ground Floor

WIDTH: 2.86 m • LENGTH: 3.95 m  
AREA: 10.46 m<sup>2</sup> • PERIMETER: 13.62 m



▼ **Bedroom**  
Ground Floor

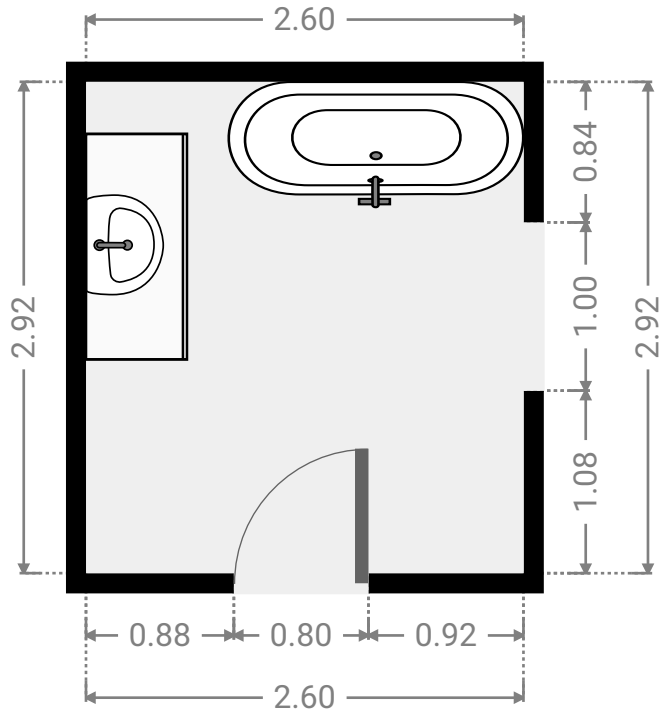
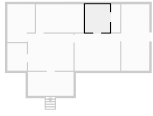
WIDTH: 5.00 m • LENGTH: 2.94 m  
AREA: 14.70 m<sup>2</sup> • PERIMETER: 15.88 m



FLOORS: 1

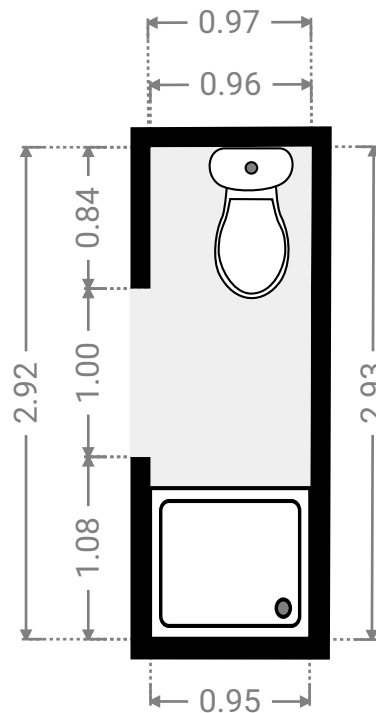
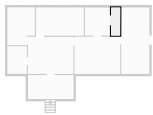
▼ **Bathroom**  
Ground Floor

WIDTH: 2.60 m • LENGTH: 2.92 m  
AREA: 7.59 m<sup>2</sup> • PERIMETER: 11.04 m



▼ **Toilet**  
Ground Floor

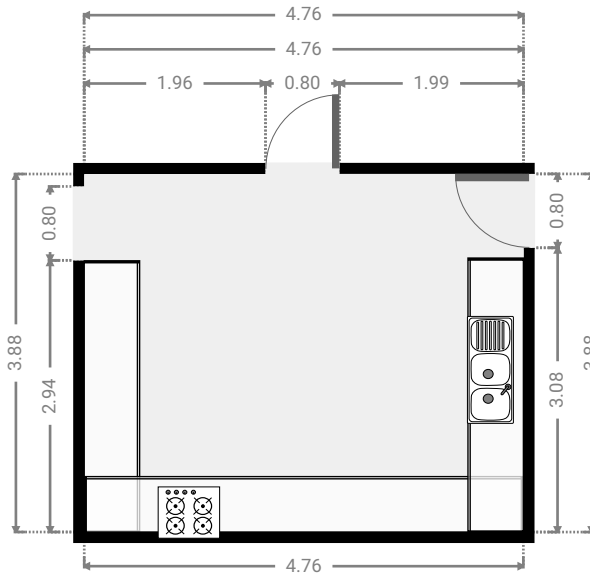
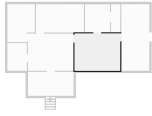
WIDTH: 0.97 m • LENGTH: 2.93 m  
AREA: 2.78 m<sup>2</sup> • PERIMETER: 7.75 m



FLOORS: 1

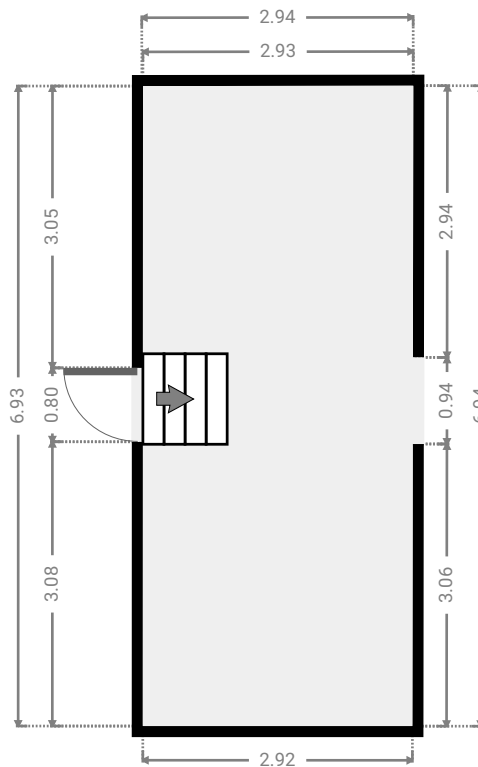
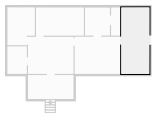
▼ Kitchen  
Ground Floor

WIDTH: 4.76 m • LENGTH: 3.88 m  
AREA: 18.44 m<sup>2</sup> • PERIMETER: 17.27 m



▼ Other  
Ground Floor

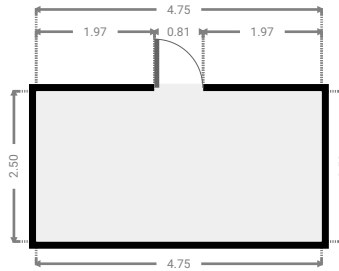
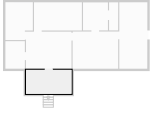
WIDTH: 2.94 m • LENGTH: 6.94 m  
AREA: 20.27 m<sup>2</sup> • PERIMETER: 19.71 m



FLOORS: 1

▼ **Other**  
Ground Floor

WIDTH: 4.75 m • LENGTH: 2.50 m  
AREA: 11.87 m<sup>2</sup> • PERIMETER: 14.50 m



▼ **Garage**  
Ground Floor

WIDTH: 9.00 m • LENGTH: 12.00 m  
AREA: 108.00 m<sup>2</sup> • PERIMETER: 42.00 m

