

13 Webster Street

SUBMITTED BY

Ray White Rockhampton Casey
stockers@cqoz.com

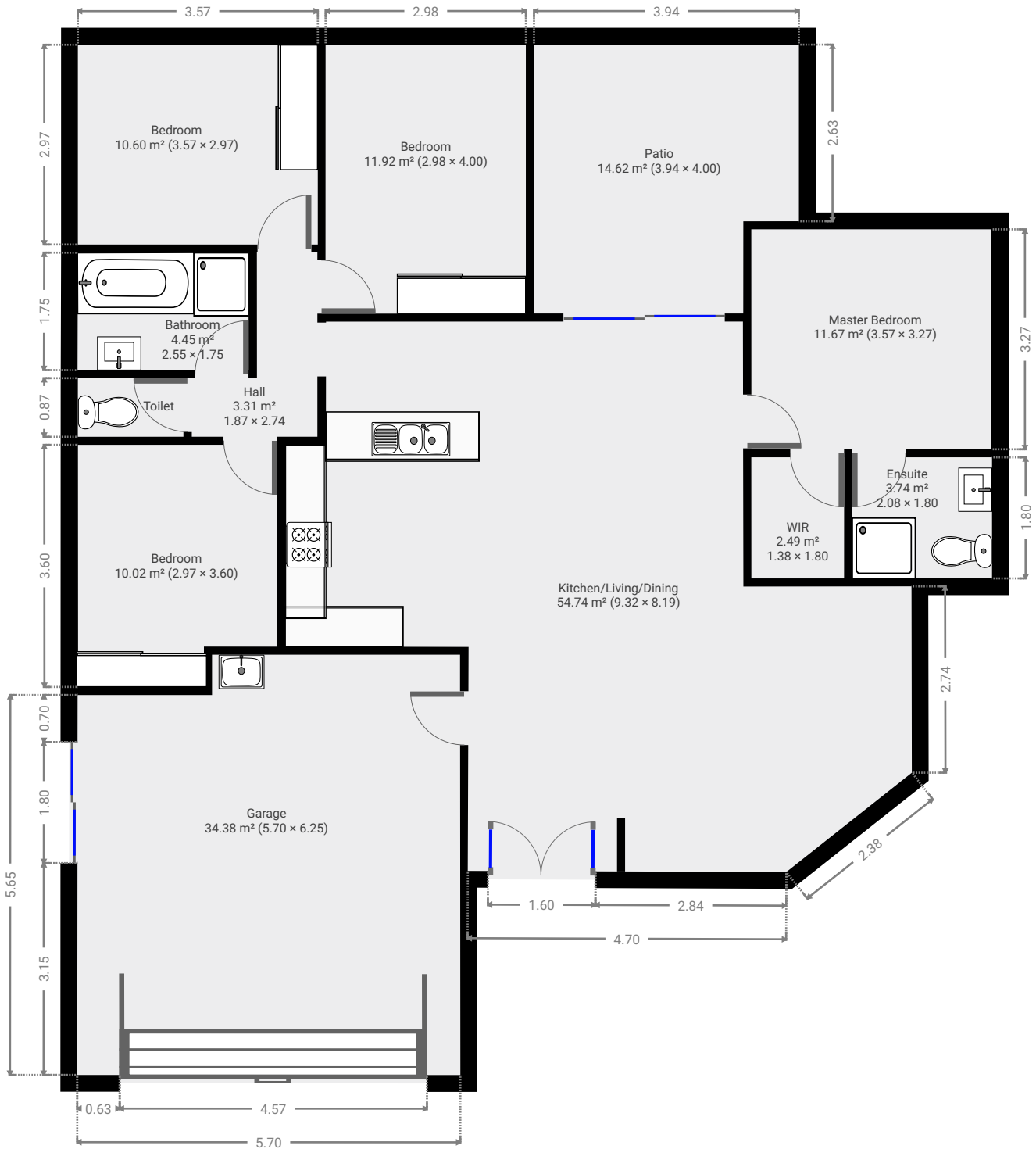
CREATED ON

2021-12-22

Floors

1

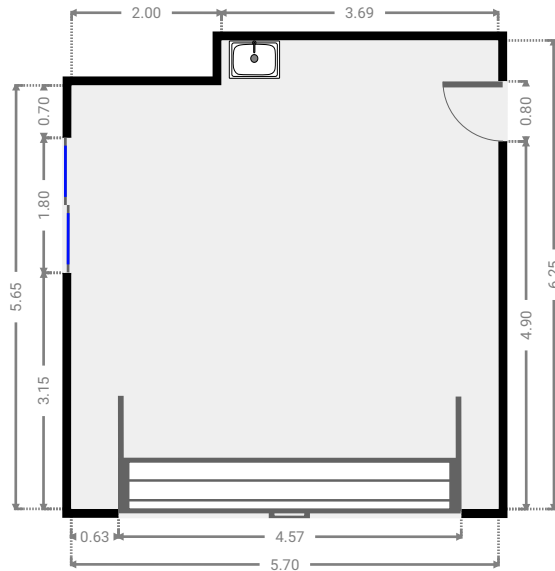
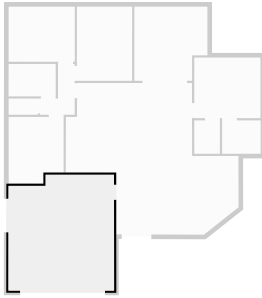
▼ Ground Floor



FLOORS: 1

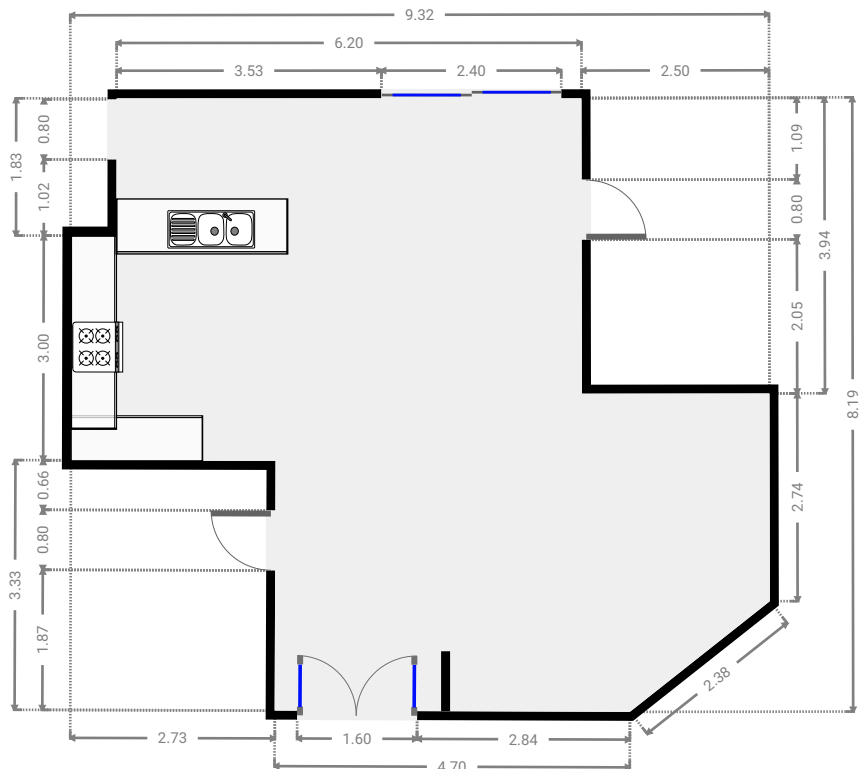
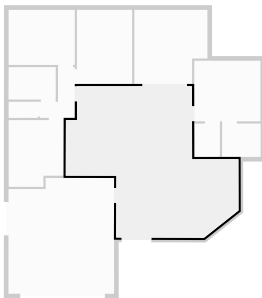
▼ **Garage**
Ground Floor

WIDTH: 5.70 m • LENGTH: 6.25 m
AREA: 34.38 m² • PERIMETER: 23.89 m



▼ **Kitchen/Living/Dining**
Ground Floor

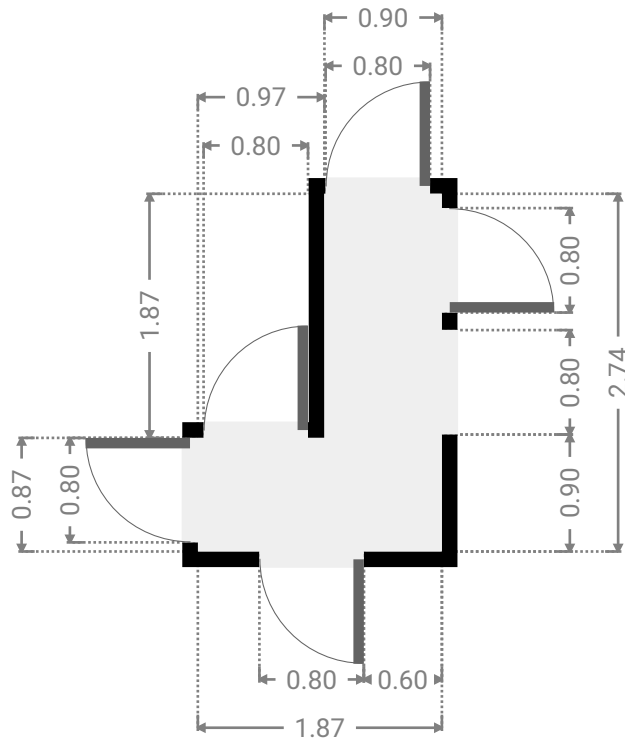
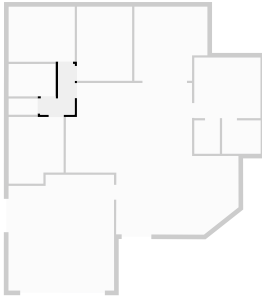
WIDTH: 9.32 m • LENGTH: 8.19 m
AREA: 54.74 m² • PERIMETER: 34.02 m



FLOORS: 1

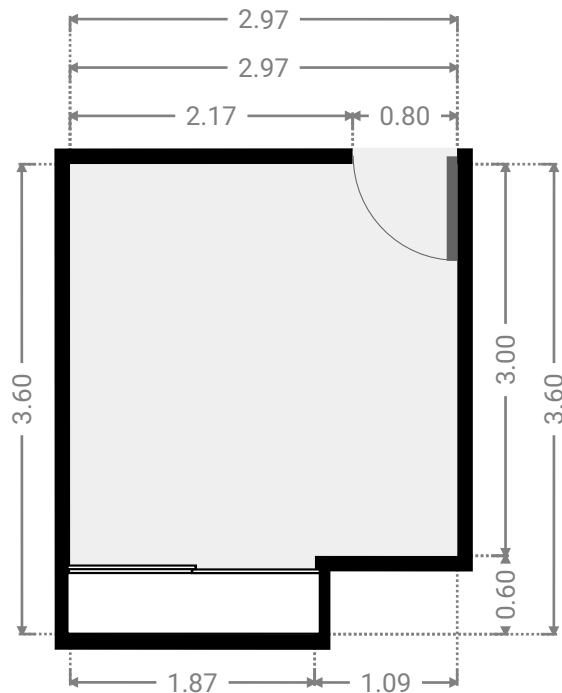
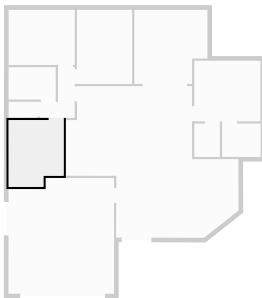
▼ **Hall**
Ground Floor

WIDTH: 1.87 m • LENGTH: 2.74 m
AREA: 3.31 m² • PERIMETER: 9.22 m



▼ **Bedroom**
Ground Floor

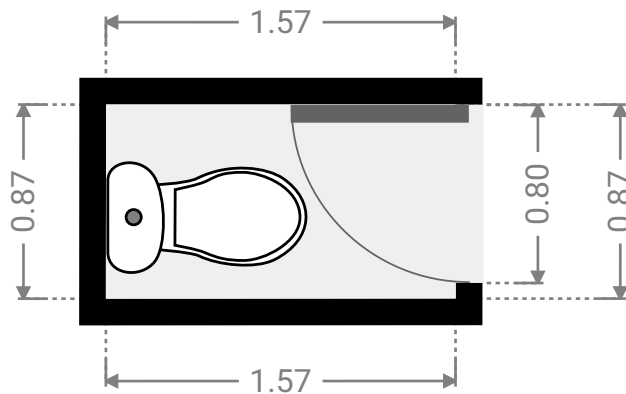
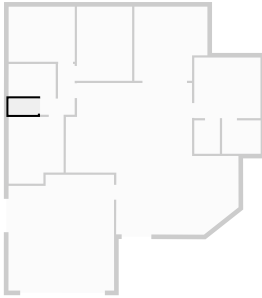
WIDTH: 2.97 m • LENGTH: 3.60 m
AREA: 10.02 m² • PERIMETER: 13.13 m



FLOORS: 1

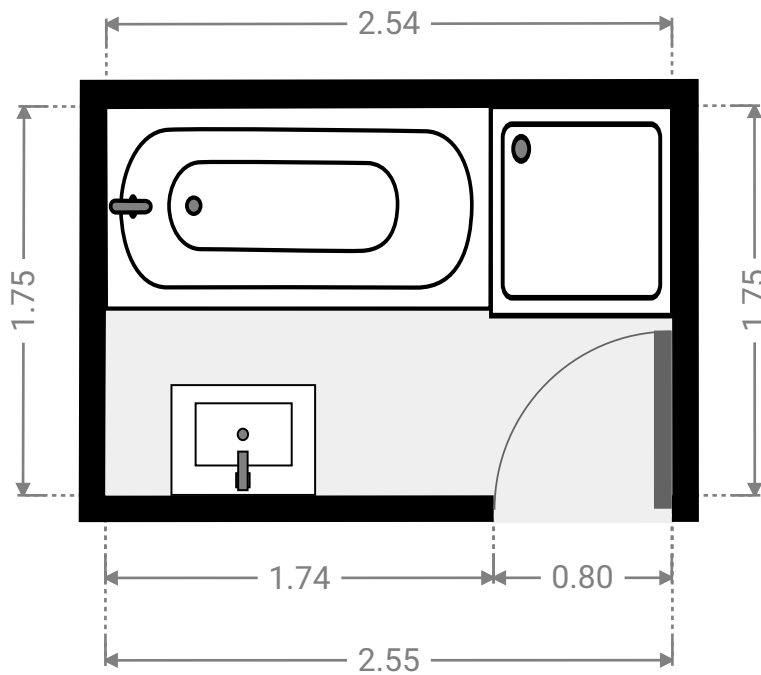
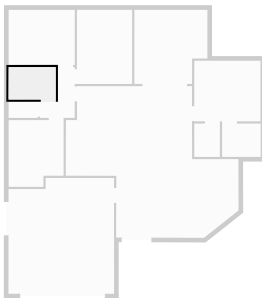
▼ Toilet
Ground Floor

WIDTH: 1.57 m • LENGTH: 0.87 m
AREA: 1.37 m² • PERIMETER: 4.88 m



▼ Bathroom
Ground Floor

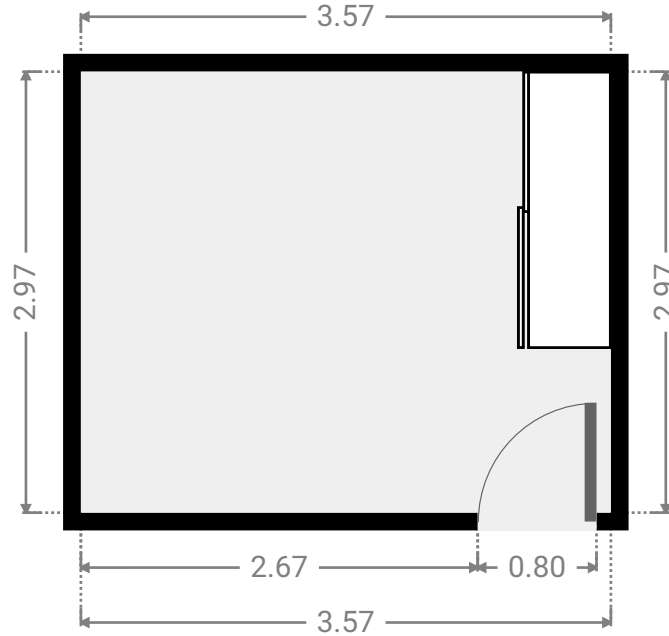
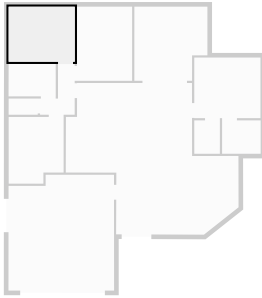
WIDTH: 2.55 m • LENGTH: 1.75 m
AREA: 4.45 m² • PERIMETER: 8.58 m



FLOORS: 1

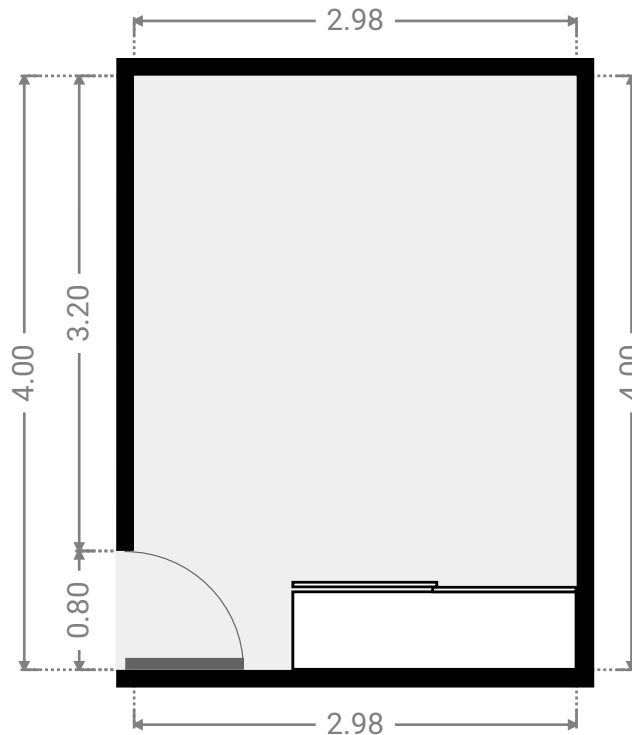
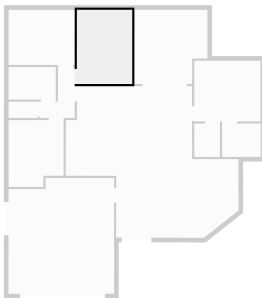
▼ **Bedroom**
Ground Floor

WIDTH: 3.57 m • LENGTH: 2.97 m
AREA: 10.60 m² • PERIMETER: 13.08 m



▼ **Bedroom**
Ground Floor

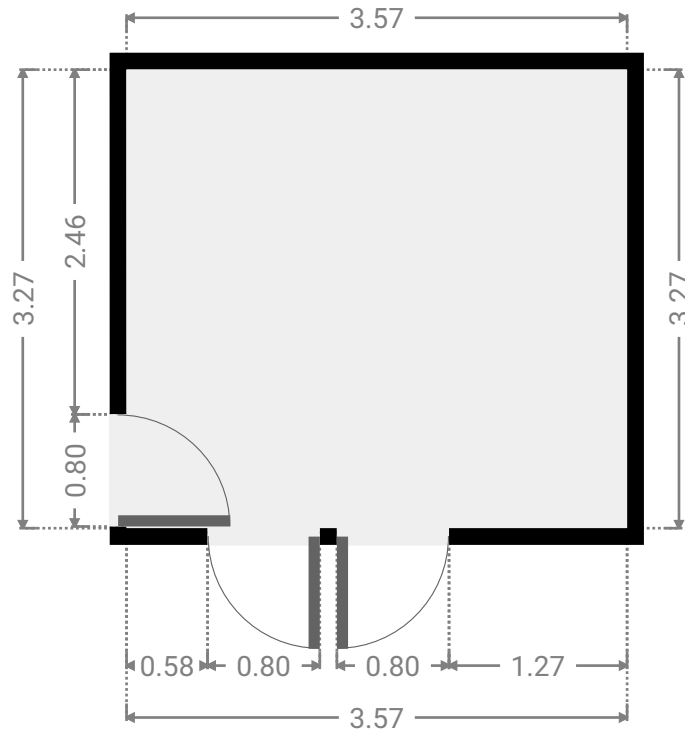
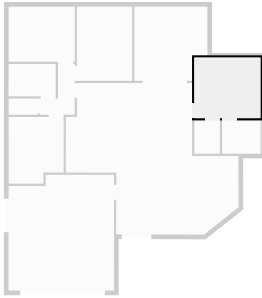
WIDTH: 2.98 m • LENGTH: 4.00 m
AREA: 11.92 m² • PERIMETER: 13.96 m



FLOORS: 1

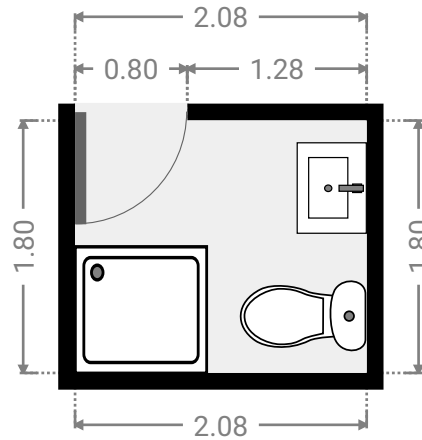
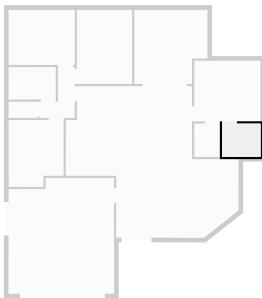
▼ Master Bedroom
Ground Floor

WIDTH: 3.57 m • LENGTH: 3.27 m
AREA: 11.67 m² • PERIMETER: 13.68 m



▼ Ensuite
Ground Floor

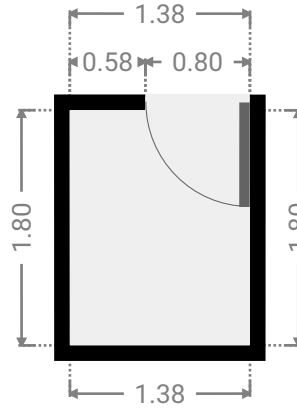
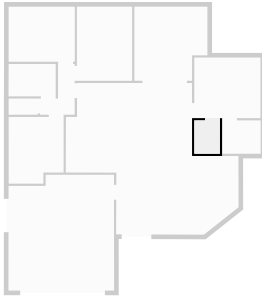
WIDTH: 2.08 m • LENGTH: 1.80 m
AREA: 3.74 m² • PERIMETER: 7.76 m



FLOORS: 1

▼ WIR
Ground Floor

WIDTH: 1.38 m • LENGTH: 1.80 m
AREA: 2.49 m² • PERIMETER: 6.36 m



▼ Patio
Ground Floor

WIDTH: 3.94 m • LENGTH: 4.00 m
AREA: 14.62 m² • PERIMETER: 15.88 m

