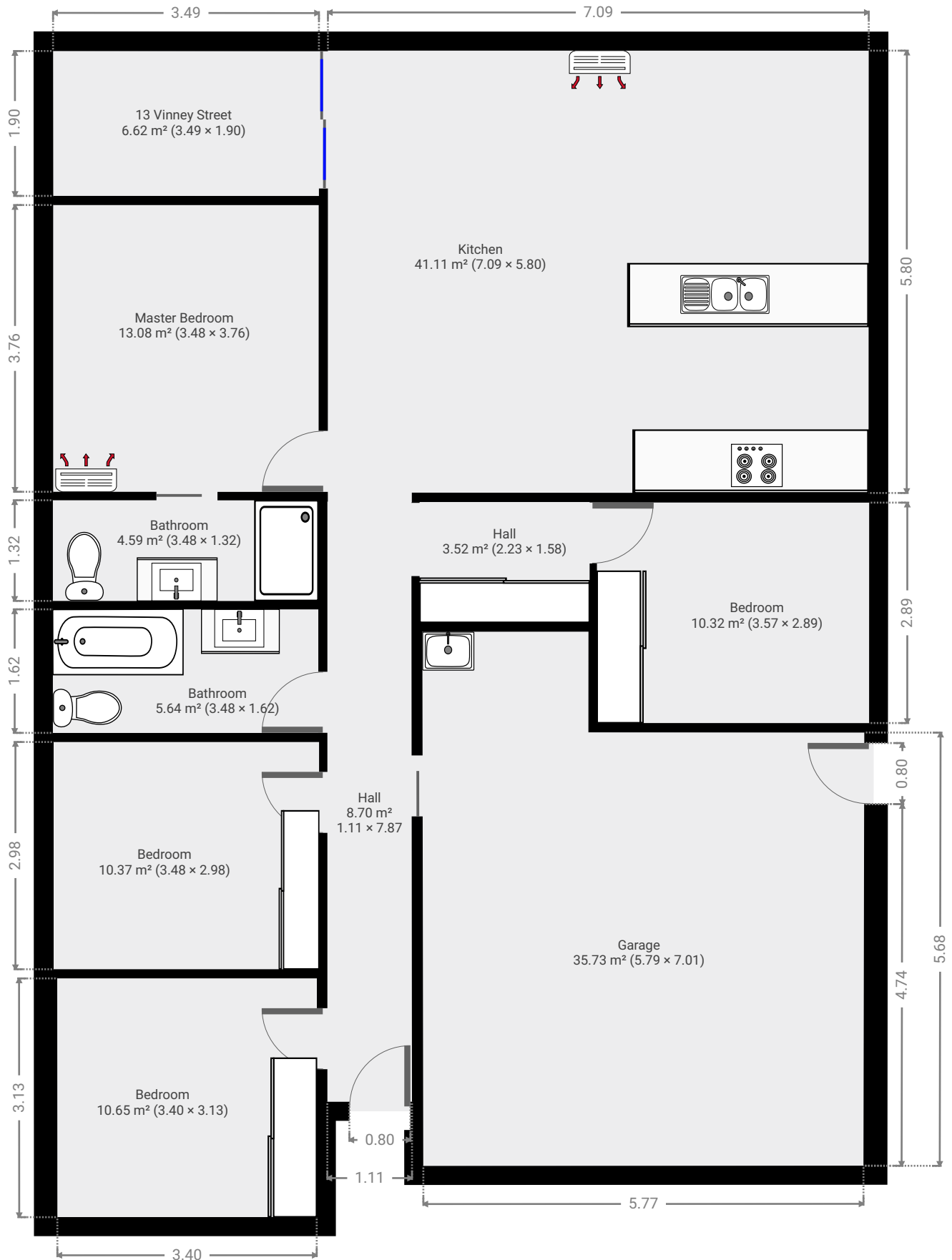


# 13 Viney Street

Created on  
2021-05-18

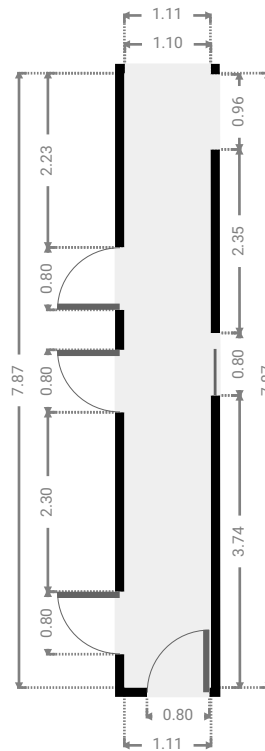
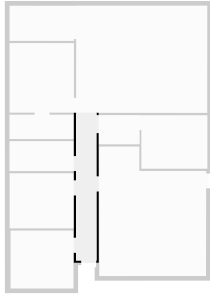
Floors  
1

▼ Ground Floor



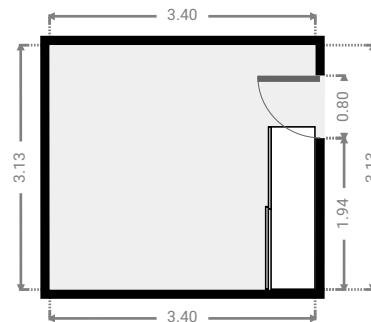
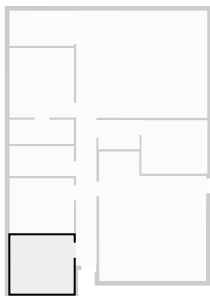
▼ **Hall**  
Ground Floor

WIDTH: 1.11 m • LENGTH: 7.87 m  
AREA: 8.70 m<sup>2</sup> • PERIMETER: 17.95 m



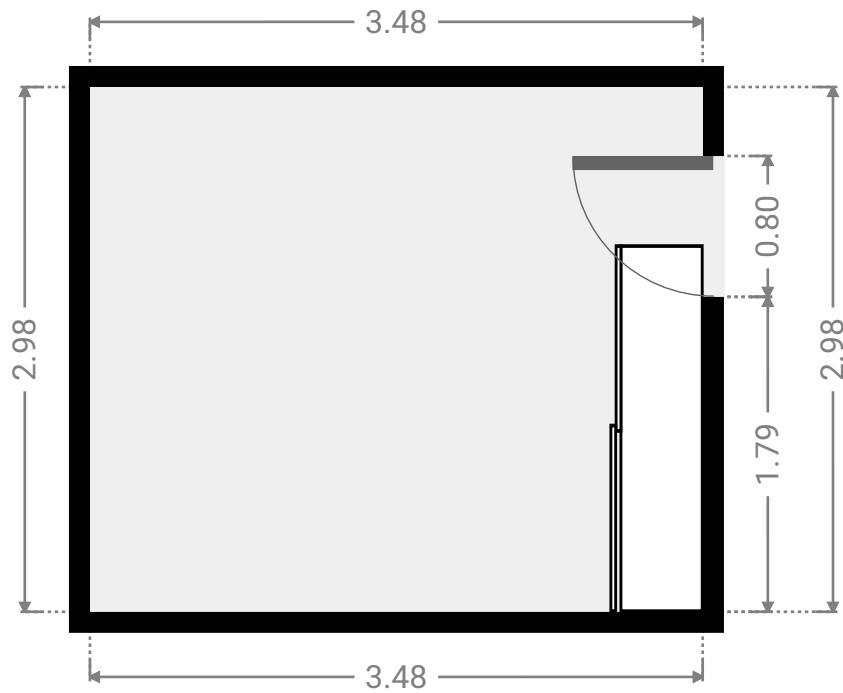
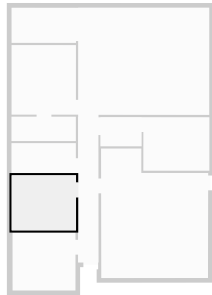
▼ **Bedroom**  
Ground Floor

WIDTH: 3.40 m • LENGTH: 3.13 m  
AREA: 10.65 m<sup>2</sup> • PERIMETER: 13.06 m



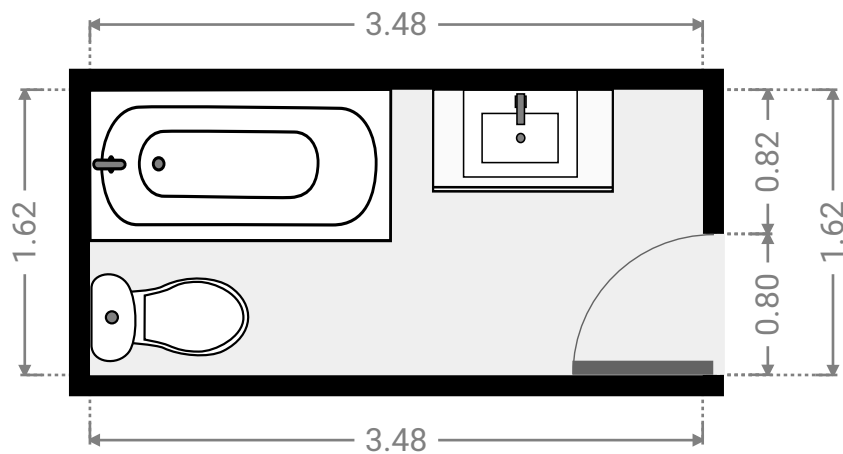
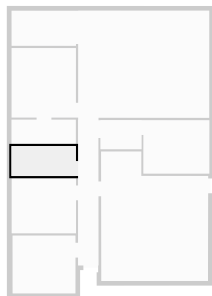
▼ **Bedroom**  
Ground Floor

WIDTH: 3.48 m • LENGTH: 2.98 m  
AREA: 10.37 m<sup>2</sup> • PERIMETER: 12.92 m



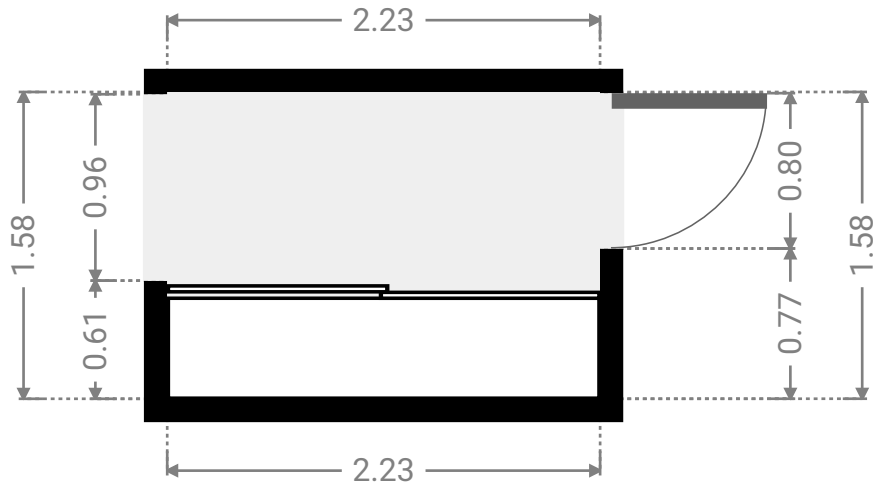
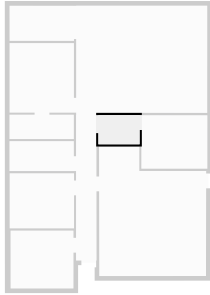
▼ **Bathroom**  
Ground Floor

WIDTH: 3.48 m • LENGTH: 1.62 m  
AREA: 5.64 m<sup>2</sup> • PERIMETER: 10.20 m



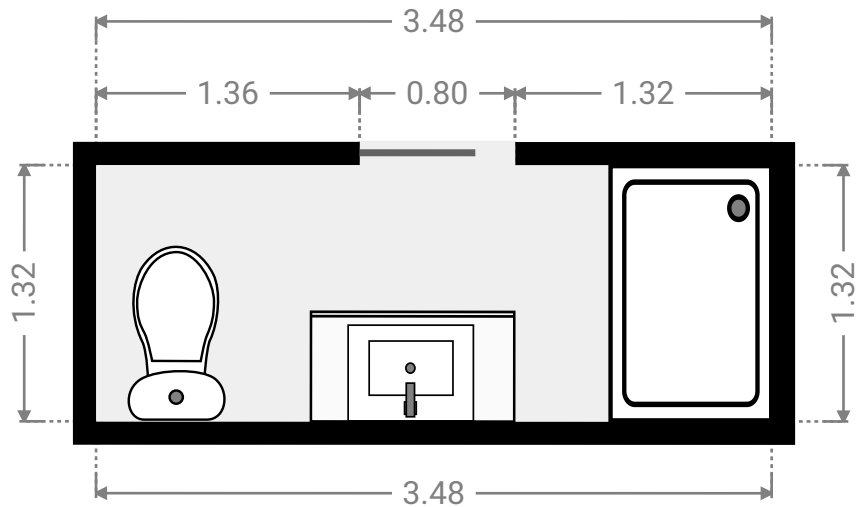
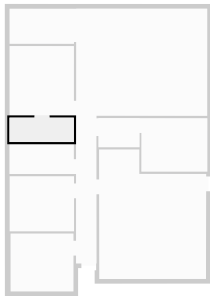
▼ **Hall**  
Ground Floor

WIDTH: 2.23 m • LENGTH: 1.58 m  
AREA: 3.52 m<sup>2</sup> • PERIMETER: 7.62 m



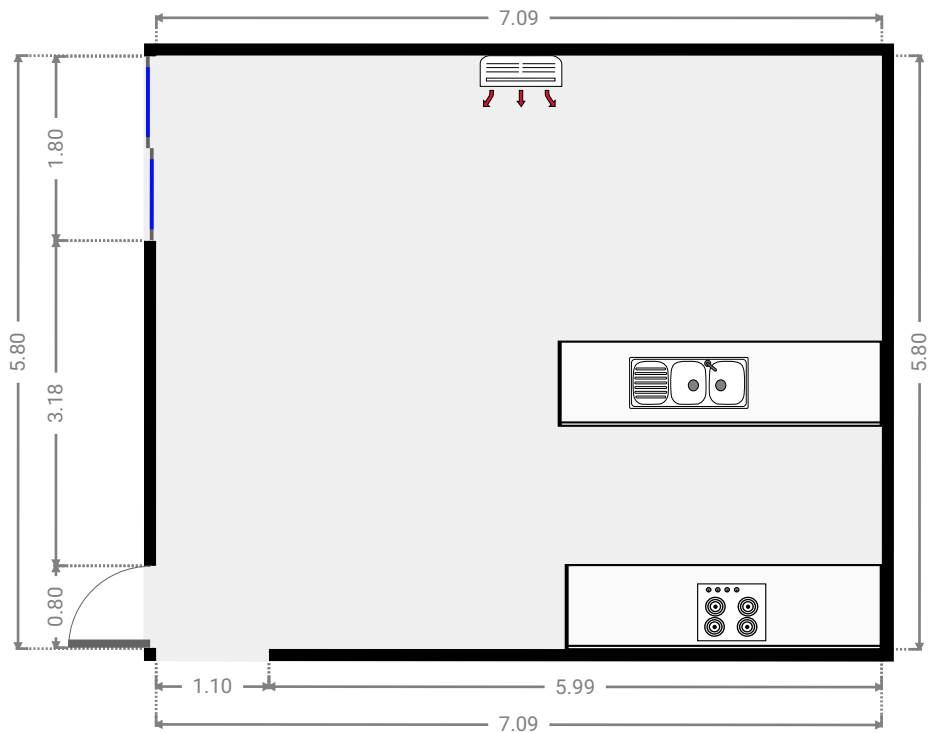
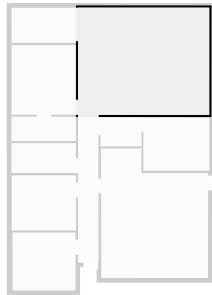
▼ **Bathroom**  
Ground Floor

WIDTH: 3.48 m • LENGTH: 1.32 m  
AREA: 4.59 m<sup>2</sup> • PERIMETER: 9.60 m



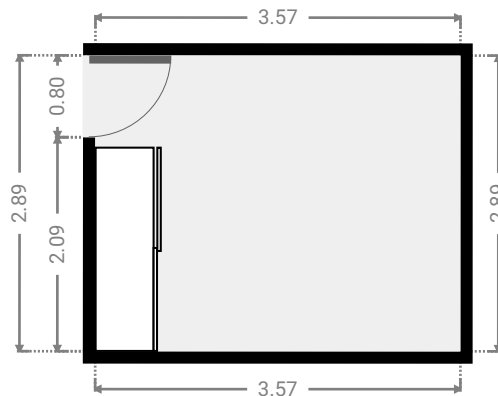
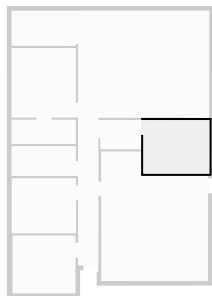
▼ **Kitchen**  
Ground Floor

WIDTH: 7.09 m • LENGTH: 5.80 m  
AREA: 41.11 m<sup>2</sup> • PERIMETER: 25.78 m



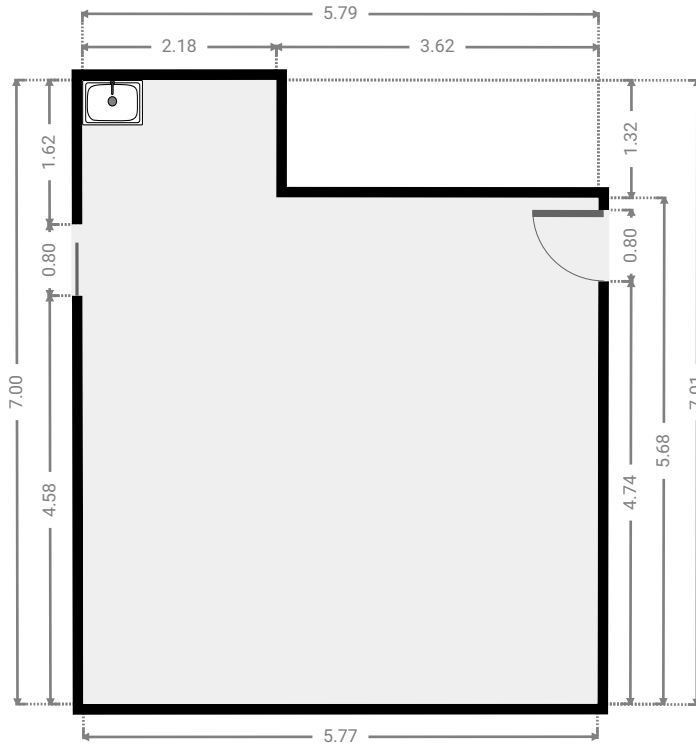
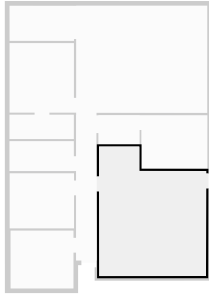
▼ **Bedroom**  
Ground Floor

WIDTH: 3.57 m • LENGTH: 2.89 m  
AREA: 10.32 m<sup>2</sup> • PERIMETER: 12.92 m



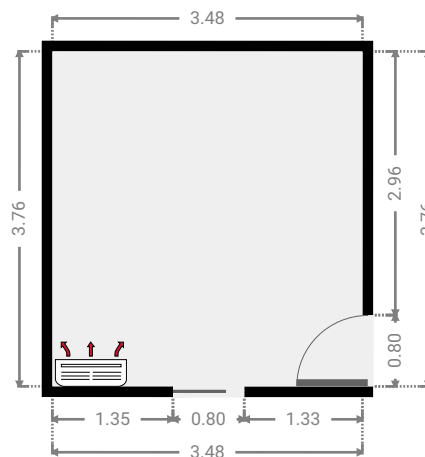
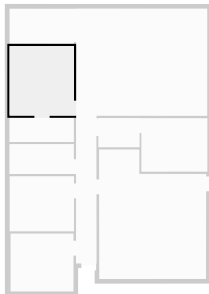
▼ **Garage**  
Ground Floor

WIDTH: 5.79 m • LENGTH: 7.01 m  
AREA: 35.73 m<sup>2</sup> • PERIMETER: 25.57 m



▼ **Master Bedroom**  
Ground Floor

WIDTH: 3.48 m • LENGTH: 3.76 m  
AREA: 13.08 m<sup>2</sup> • PERIMETER: 14.48 m



▼ 13 Viney Street  
Ground Floor

WIDTH: 3.49 m • LENGTH: 1.90 m  
AREA: 6.62 m<sup>2</sup> • PERIMETER: 10.77 m

