

13 Peninsula Place

SUBMITTED BY

Ray White Rockhampton Casey
stockers@cqoz.com

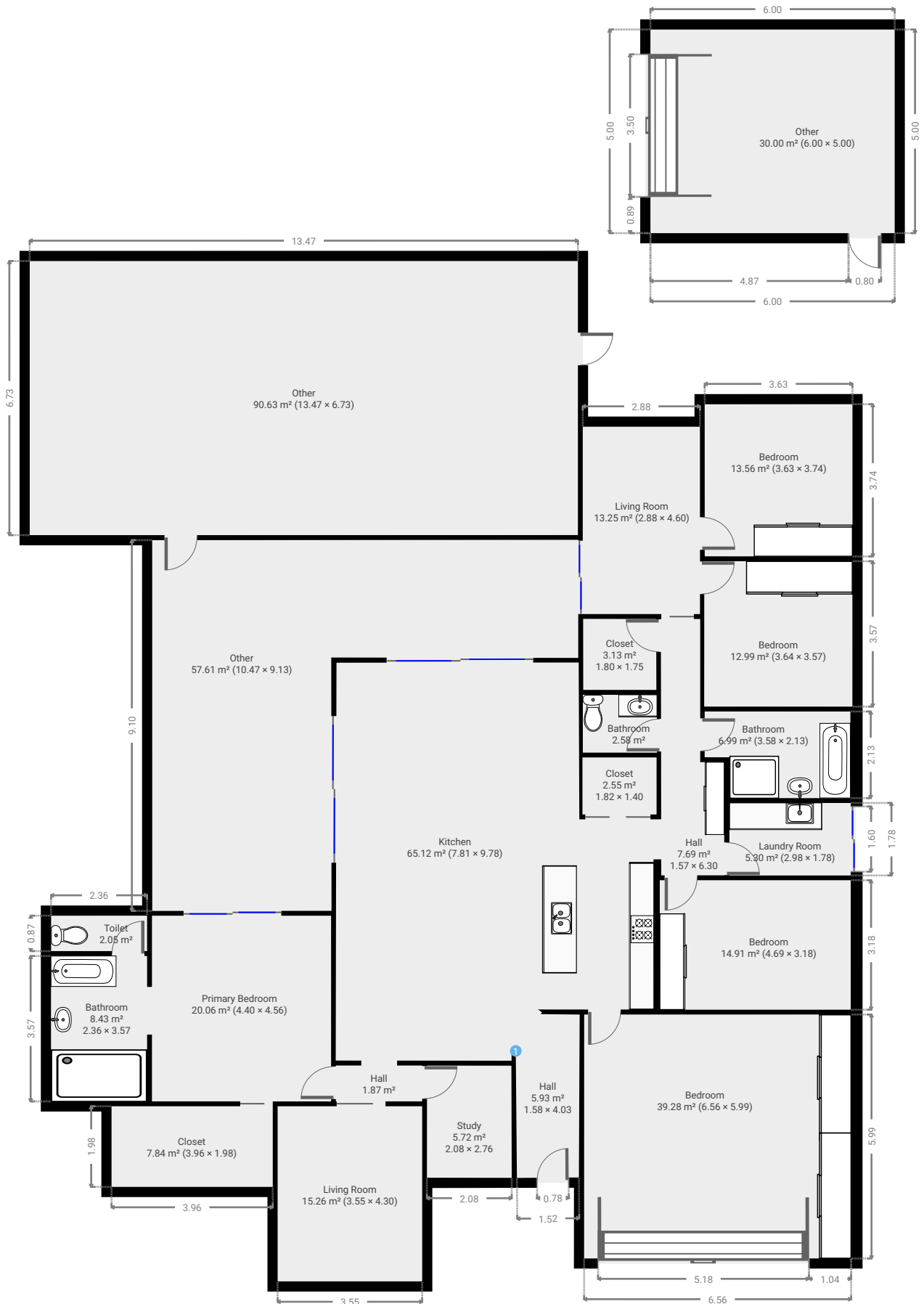
CREATED ON

2022-03-16

Floors

1

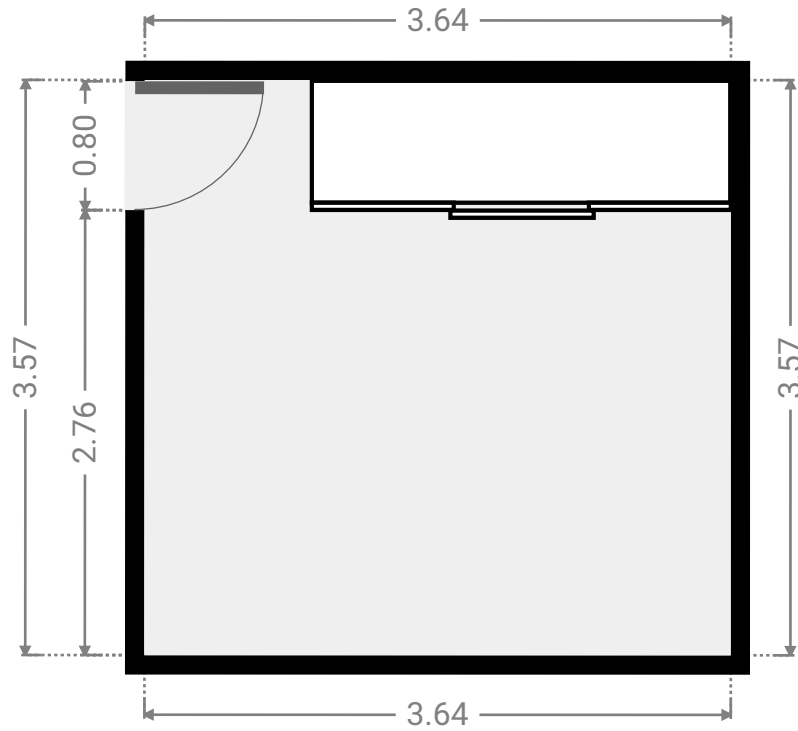
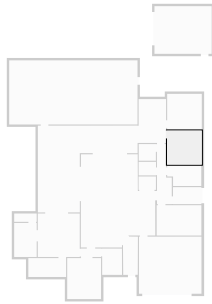
▼ Ground Floor



FLOORS: 1

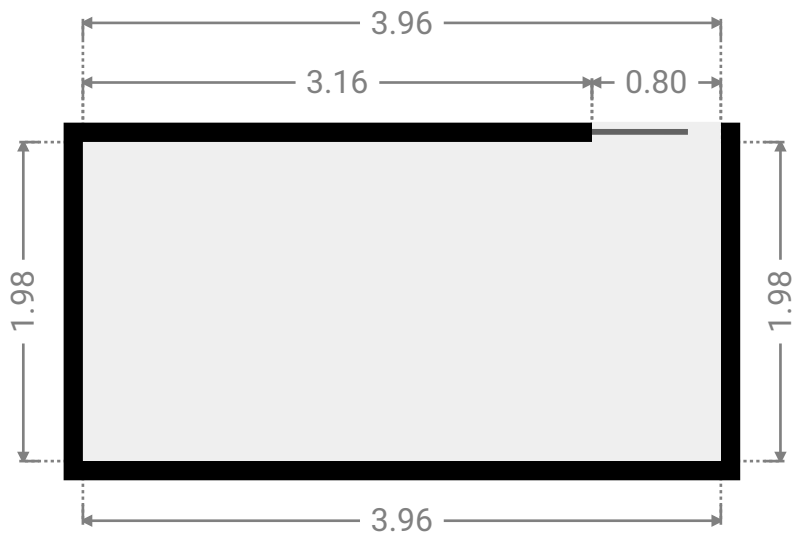
▼ **Bedroom**
Ground Floor

WIDTH: 3.64 m • LENGTH: 3.57 m
AREA: 12.99 m² • PERIMETER: 14.42 m



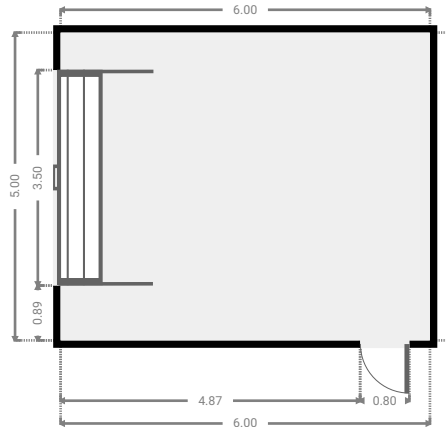
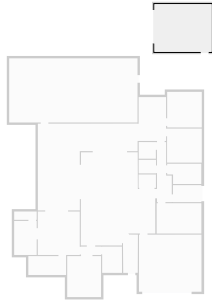
▼ **Closet**
Ground Floor

WIDTH: 3.96 m • LENGTH: 1.98 m
AREA: 7.84 m² • PERIMETER: 11.88 m



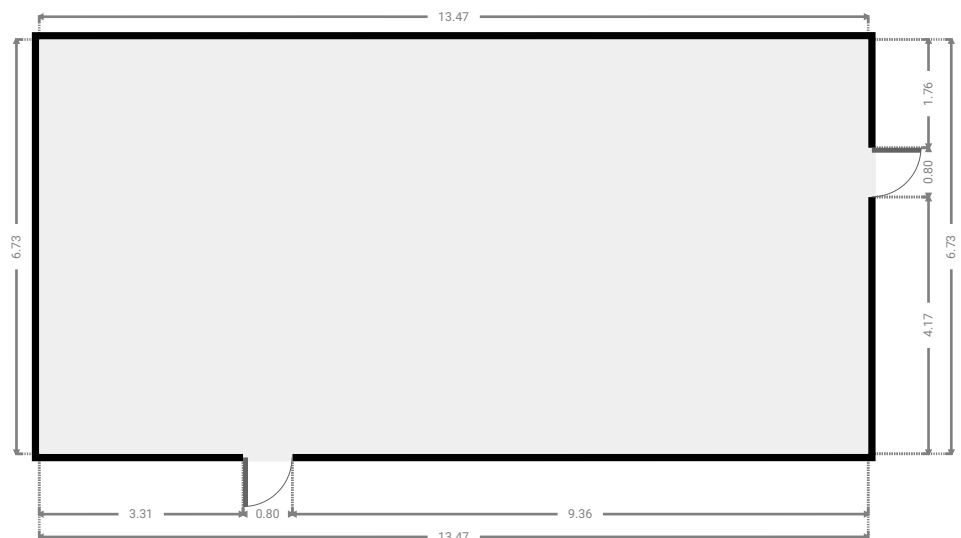
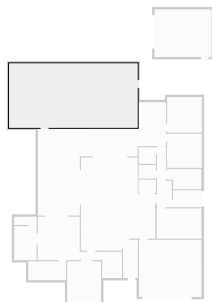
▼ Other Ground Floor

WIDTH: 6.00 m • LENGTH: 5.00 m
AREA: 30.00 m² • PERIMETER: 22.00 m



▼ Other Ground Floor

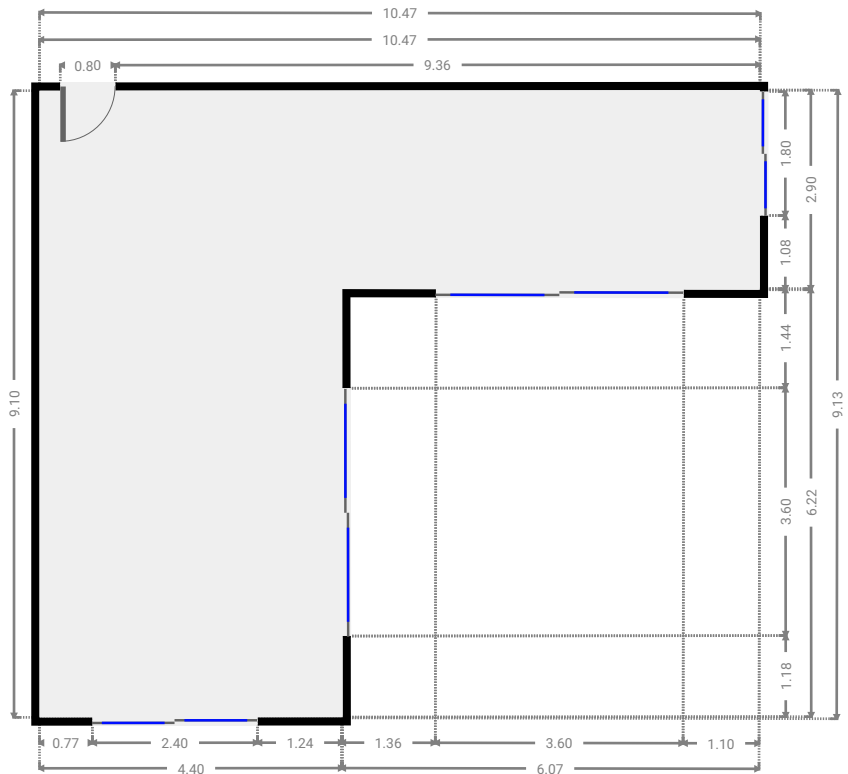
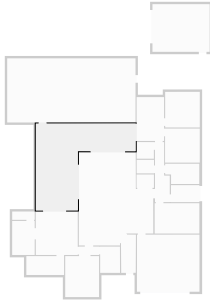
WIDTH: 13.47 m • LENGTH: 6.73 m
AREA: 90.63 m² • PERIMETER: 40.39 m



FLOORS: 1

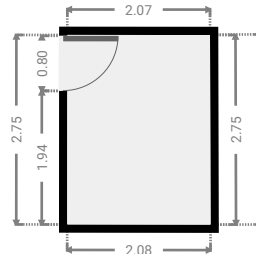
▼ Other Ground Floor

WIDTH: 10.47 m • LENGTH: 9.13 m
AREA: 57.61 m² • PERIMETER: 39.16 m



▼ Study Ground Floor

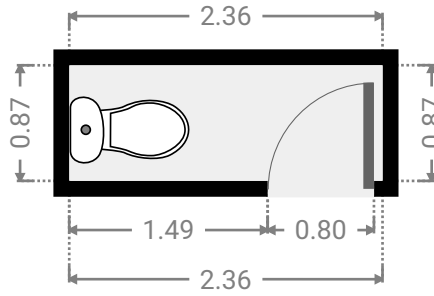
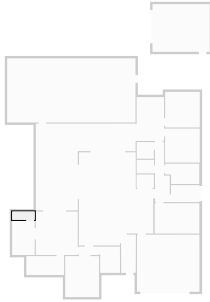
WIDTH: 2.08 m • LENGTH: 2.76 m
AREA: 5.72 m² • PERIMETER: 9.66 m



FLOORS: 1

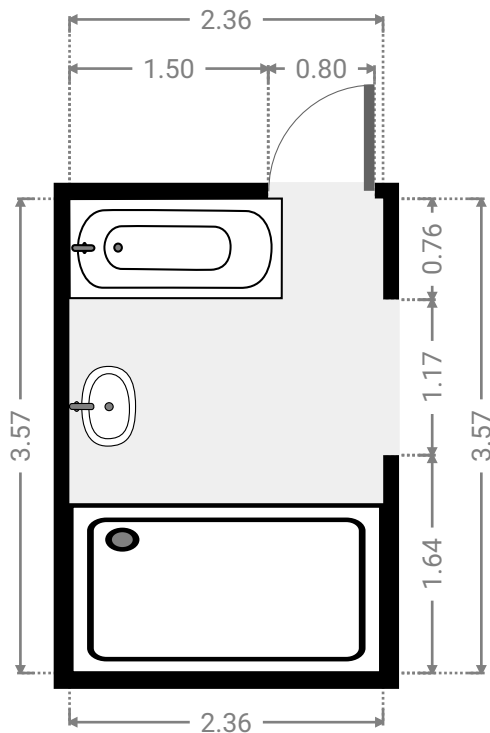
▼ Toilet
Ground Floor

WIDTH: 2.36 m • LENGTH: 0.87 m
AREA: 2.05 m² • PERIMETER: 6.46 m



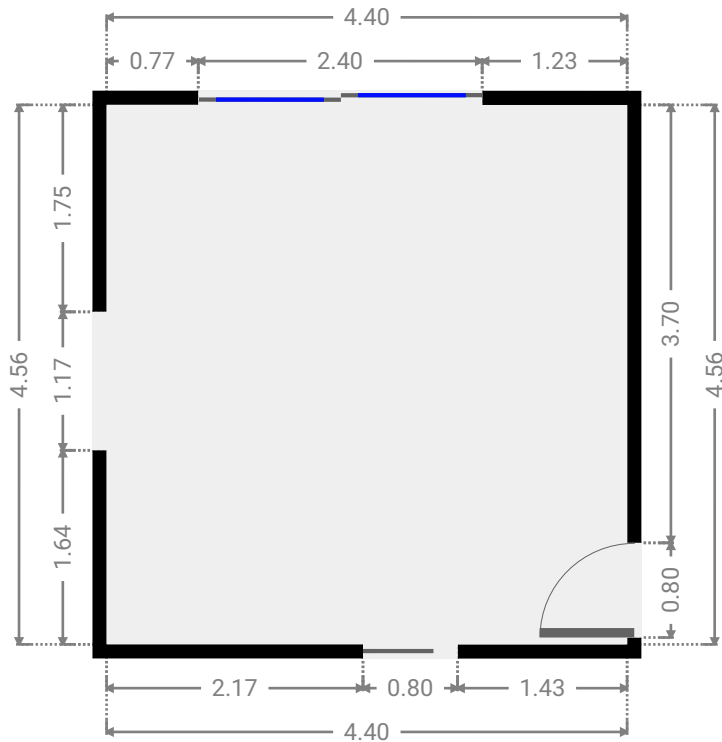
▼ Bathroom
Ground Floor

WIDTH: 2.36 m • LENGTH: 3.57 m
AREA: 8.43 m² • PERIMETER: 11.86 m



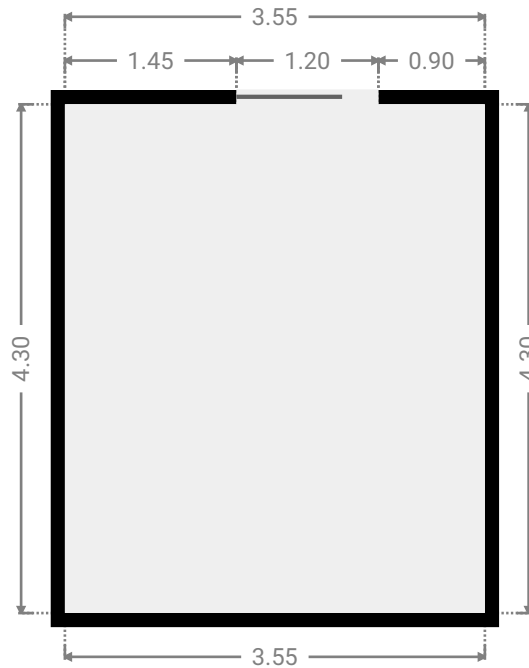
▼ **Primary Bedroom**
Ground Floor

WIDTH: 4.40 m • LENGTH: 4.56 m
AREA: 20.06 m² • PERIMETER: 17.92 m



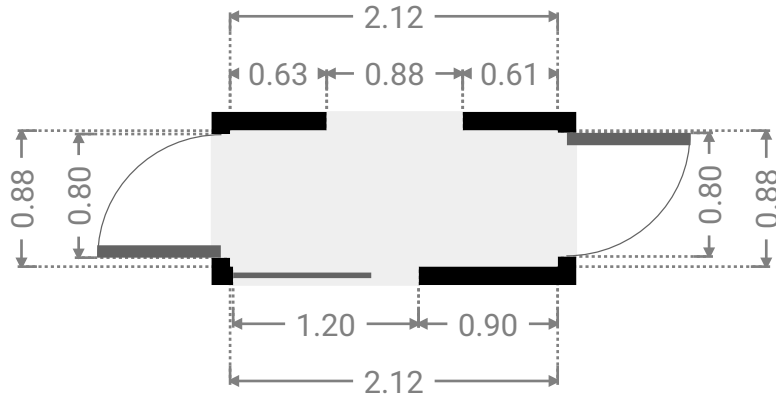
▼ **Living Room**
Ground Floor

WIDTH: 3.55 m • LENGTH: 4.30 m
AREA: 15.26 m² • PERIMETER: 15.70 m



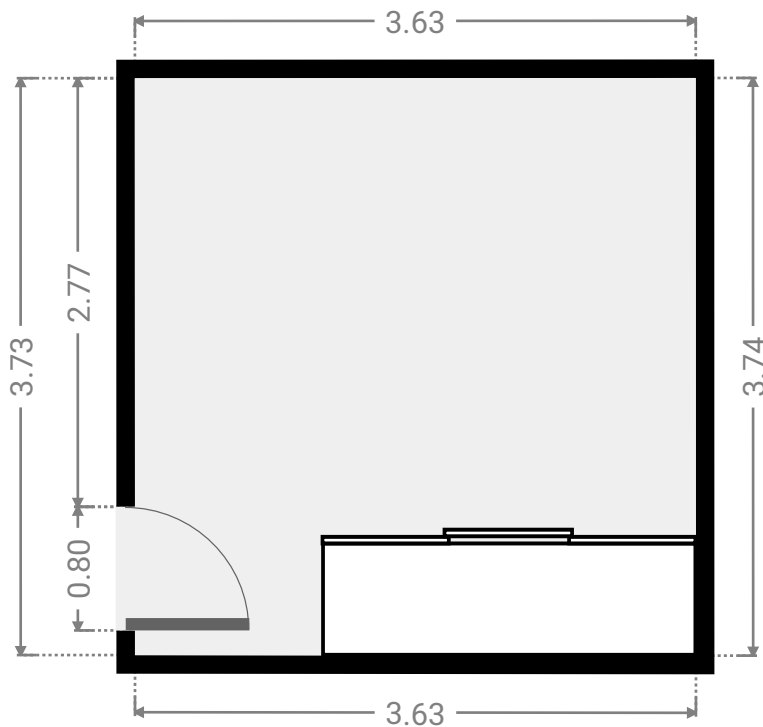
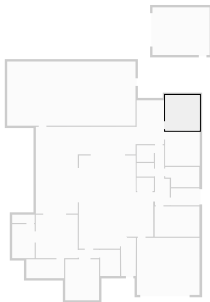
▼ **Hall**
Ground Floor

WIDTH: 2.12 m • LENGTH: 0.88 m
AREA: 1.87 m² • PERIMETER: 6.00 m



▼ **Bedroom**
Ground Floor

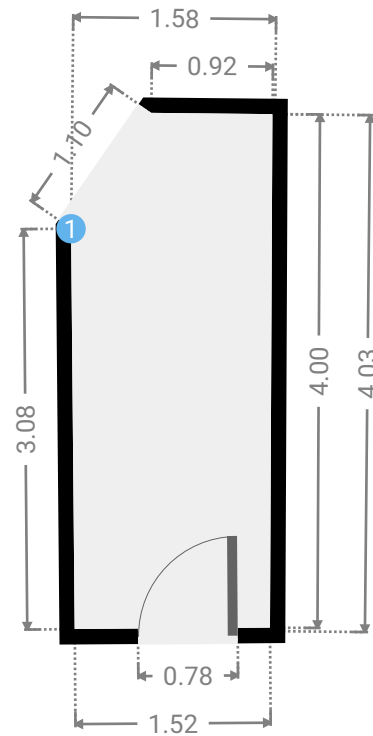
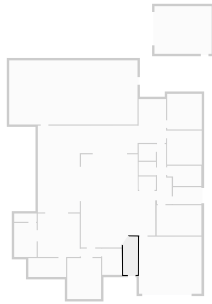
WIDTH: 3.63 m • LENGTH: 3.74 m
AREA: 13.56 m² • PERIMETER: 14.73 m



FLOORS: 1

▼ Hall Ground Floor

WIDTH: 1.58 m • LENGTH: 4.03 m
AREA: 5.93 m² • PERIMETER: 10.69 m



▼ Hall/Ground Floor

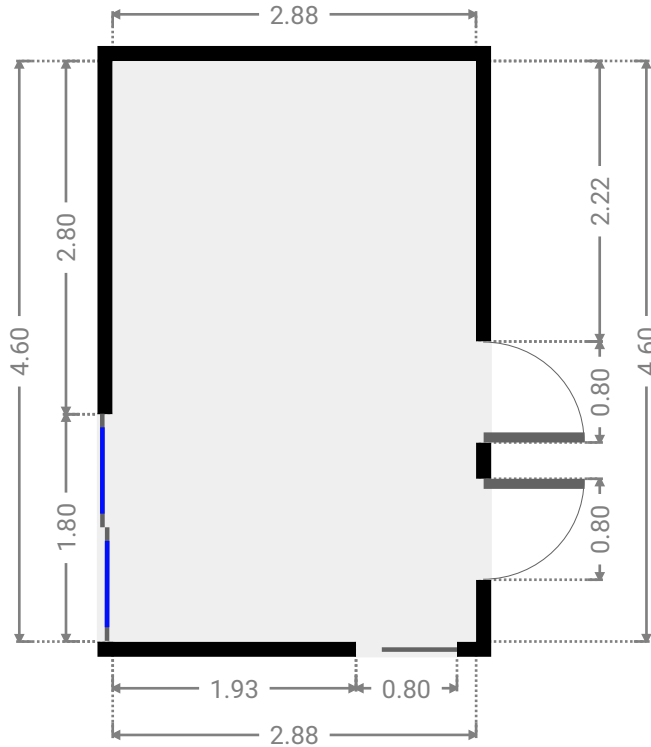
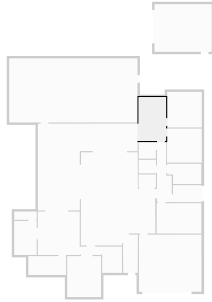
1 OPENING

Height
0.00 m



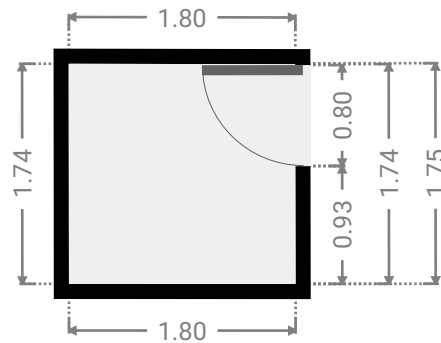
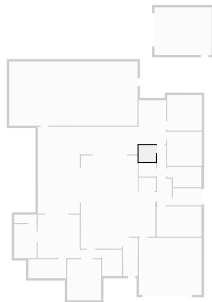
▼ **Living Room**
Ground Floor

WIDTH: 2.88 m • LENGTH: 4.60 m
AREA: 13.25 m² • PERIMETER: 14.96 m



▼ **Closet**
Ground Floor

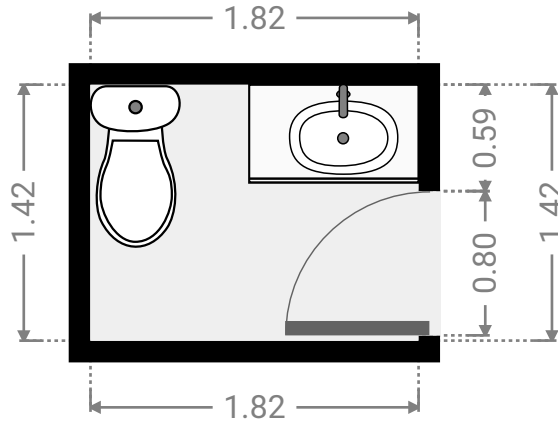
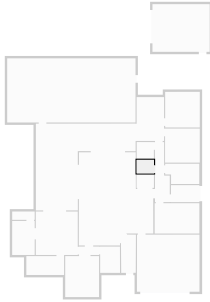
WIDTH: 1.80 m • LENGTH: 1.75 m
AREA: 3.13 m² • PERIMETER: 7.08 m



FLOORS: 1

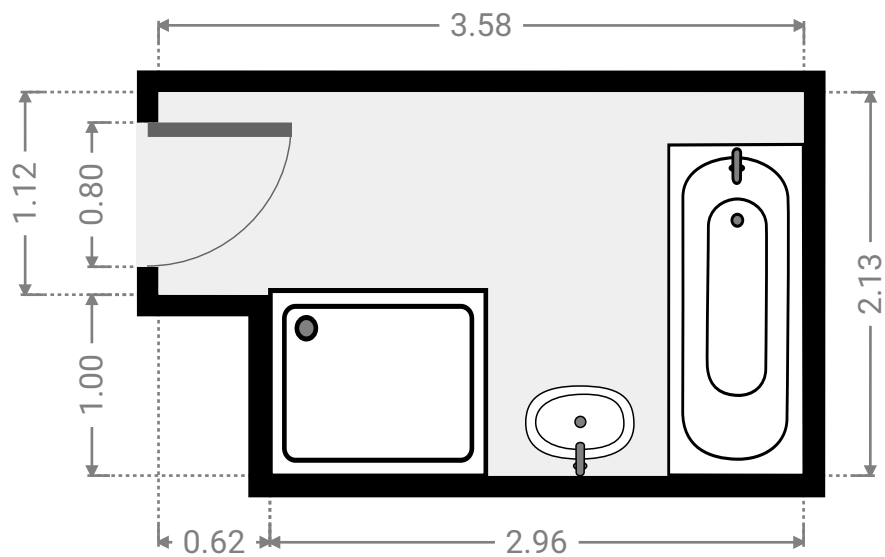
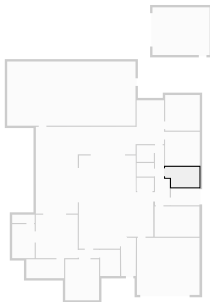
▼ Bathroom
Ground Floor

WIDTH: 1.82 m • LENGTH: 1.42 m
AREA: 2.58 m² • PERIMETER: 6.48 m



▼ Bathroom
Ground Floor

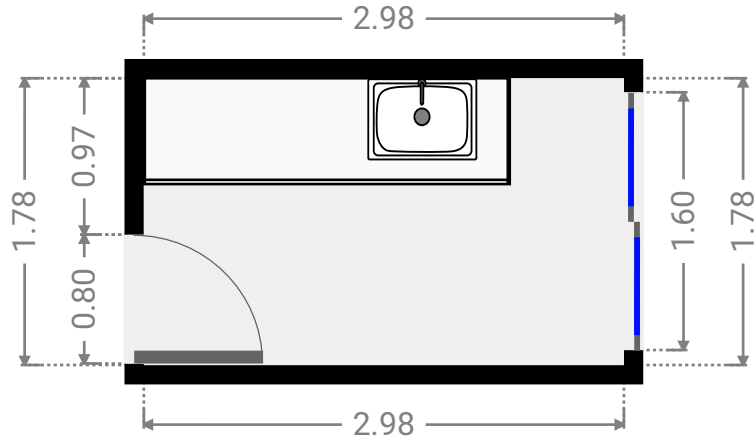
WIDTH: 3.58 m • LENGTH: 2.13 m
AREA: 6.99 m² • PERIMETER: 11.41 m



FLOORS: 1

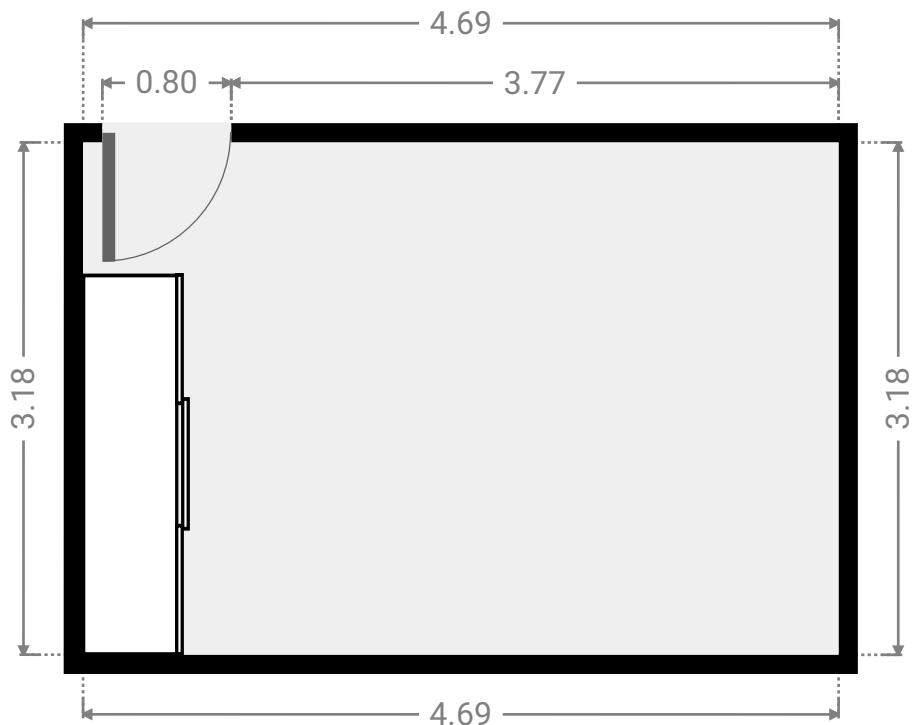
▼ Laundry Room
Ground Floor

WIDTH: 2.98 m • LENGTH: 1.78 m
AREA: 5.30 m² • PERIMETER: 9.52 m



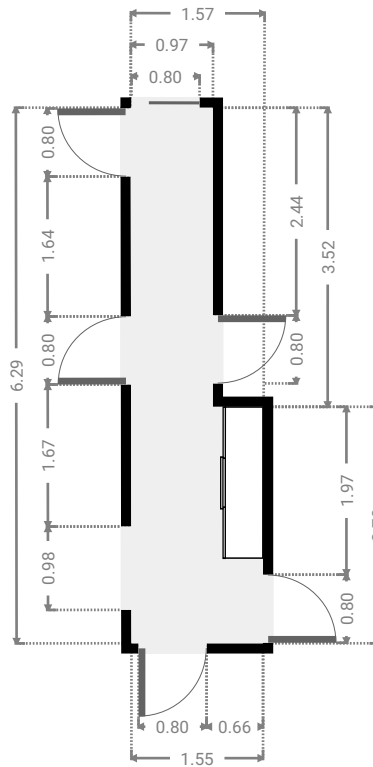
▼ Bedroom
Ground Floor

WIDTH: 4.69 m • LENGTH: 3.18 m
AREA: 14.91 m² • PERIMETER: 15.74 m



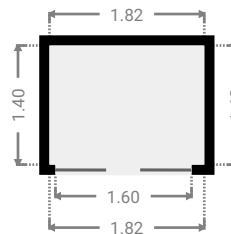
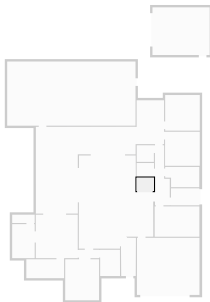
▼ Hall
Ground Floor

WIDTH: 1.57 m • LENGTH: 6.30 m
AREA: 7.69 m² • PERIMETER: 15.70 m



▼ Closet
Ground Floor

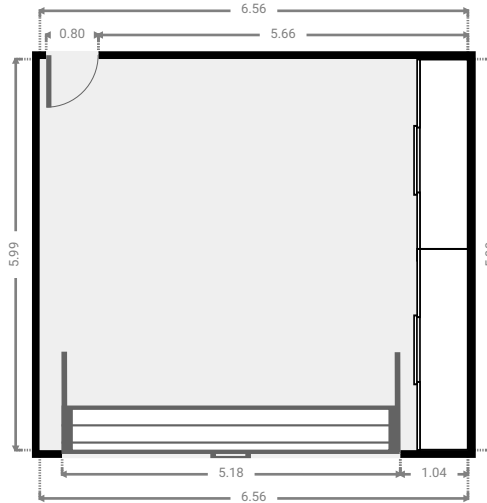
WIDTH: 1.82 m • LENGTH: 1.40 m
AREA: 2.55 m² • PERIMETER: 6.44 m



FLOORS: 1

▼ **Bedroom**
Ground Floor

WIDTH: 6.56 m • LENGTH: 5.99 m
AREA: 39.28 m² • PERIMETER: 25.10 m



▼ **Kitchen**
Ground Floor

WIDTH: 7.81 m • LENGTH: 9.78 m
AREA: 65.12 m² • PERIMETER: 34.68 m

