

129 Meldrum road

SUBMITTED BY

Ray White Rockhampton Casey
stockers@cqoz.com

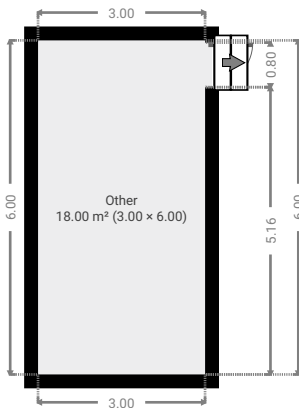
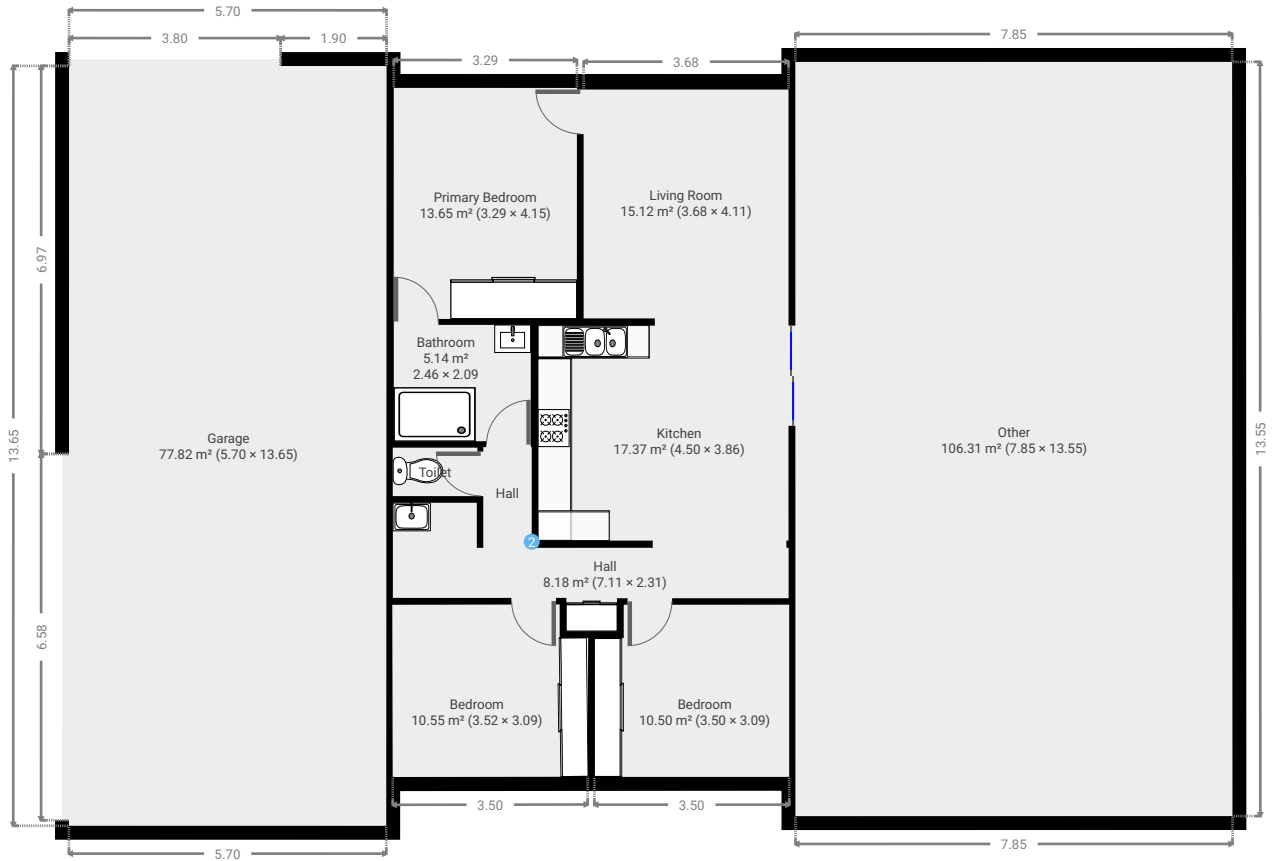
CREATED ON

2022-02-28

Floors

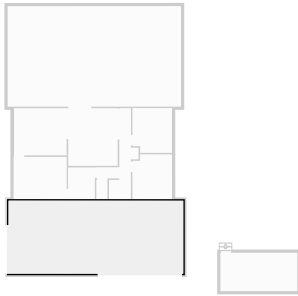
1

▼ Ground Floor



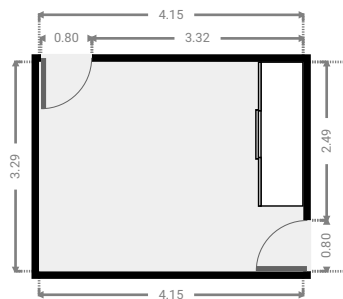
▼ **Garage**
Ground Floor

WIDTH: 13.65 m • LENGTH: 5.70 m
AREA: 77.82 m² • PERIMETER: 38.70 m



▼ **Primary Bedroom**
Ground Floor

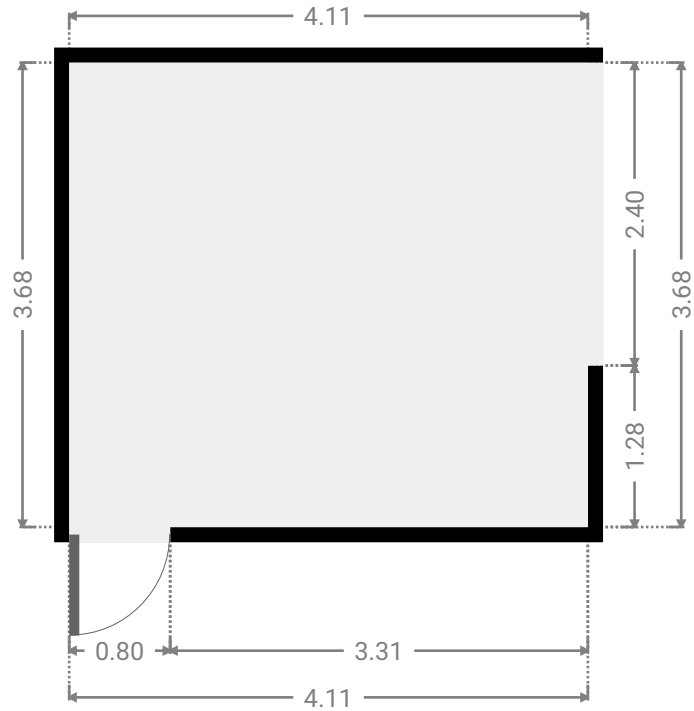
WIDTH: 4.15 m • LENGTH: 3.29 m
AREA: 13.65 m² • PERIMETER: 14.88 m



FLOORS: 1

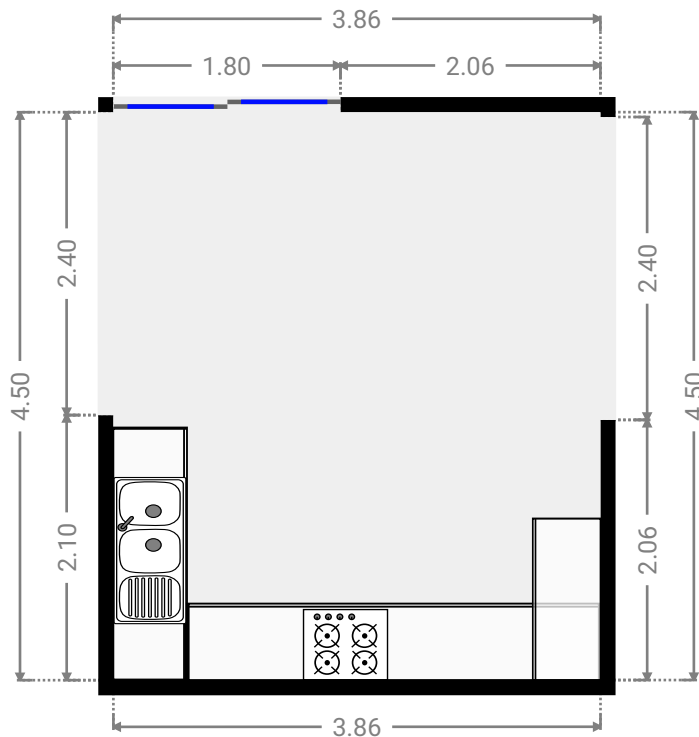
▼ **Living Room**
Ground Floor

WIDTH: 4.11 m • LENGTH: 3.68 m
AREA: 15.12 m² • PERIMETER: 15.58 m



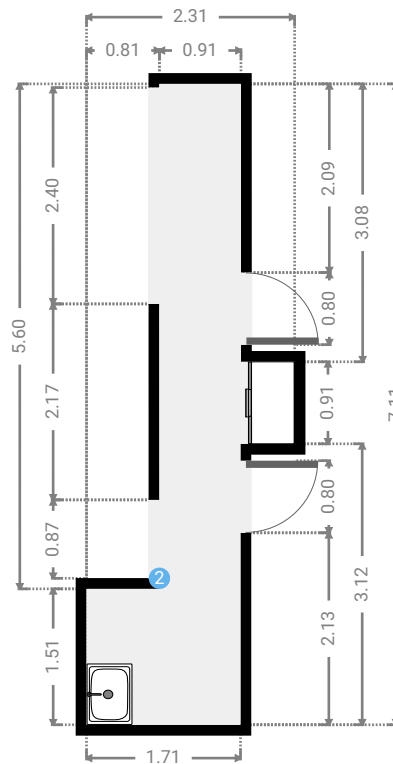
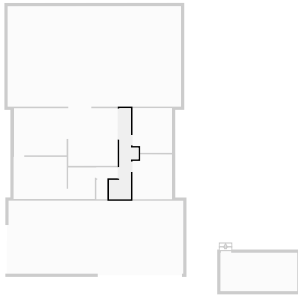
▼ **Kitchen**
Ground Floor

WIDTH: 3.86 m • LENGTH: 4.50 m
AREA: 17.37 m² • PERIMETER: 16.72 m



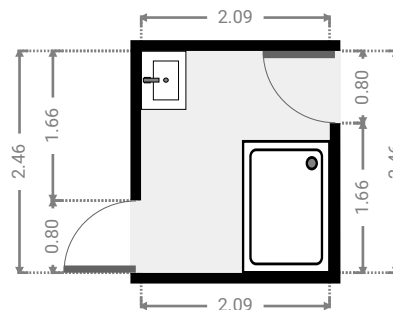
▼ Hall
Ground Floor

WIDTH: 2.31 m • LENGTH: 7.11 m
AREA: 8.18 m² • PERIMETER: 18.84 m



▼ Bathroom
Ground Floor

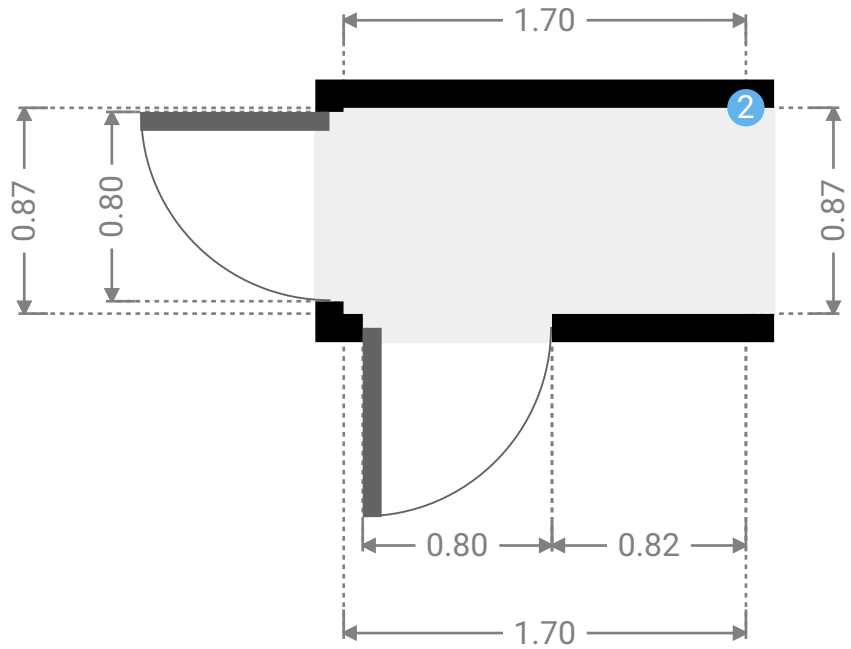
WIDTH: 2.09 m • LENGTH: 2.46 m
AREA: 5.14 m² • PERIMETER: 9.10 m



FLOORS: 1

▼ **Hall**
Ground Floor

WIDTH: 1.70 m • LENGTH: 0.87 m
AREA: 1.48 m² • PERIMETER: 5.14 m



▼ **Hall/Ground Floor**

2 OPENING

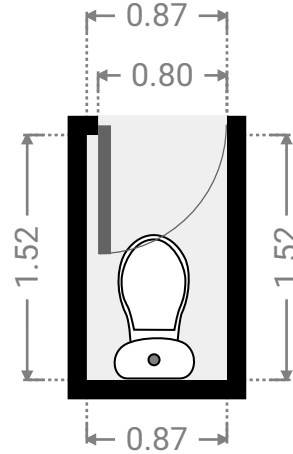
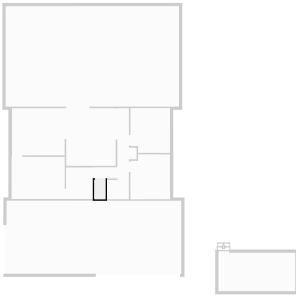
Height
0.00 m



FLOORS: 1

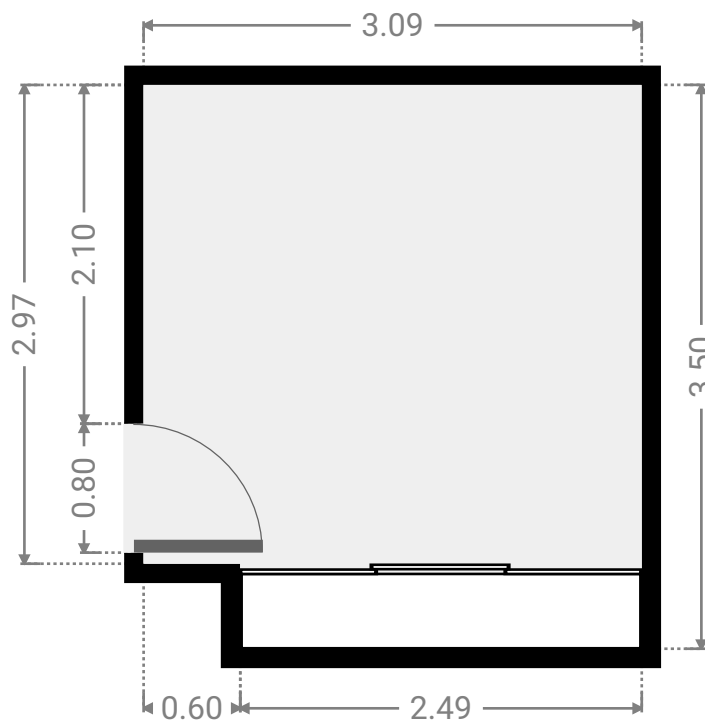
▼ **Toilet**
Ground Floor

WIDTH: 0.87 m • LENGTH: 1.52 m
AREA: 1.32 m² • PERIMETER: 4.78 m



▼ **Bedroom**
Ground Floor

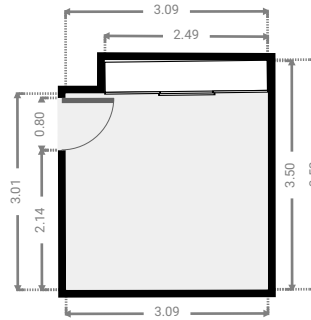
WIDTH: 3.09 m • LENGTH: 3.50 m
AREA: 10.50 m² • PERIMETER: 13.18 m



FLOORS: 1

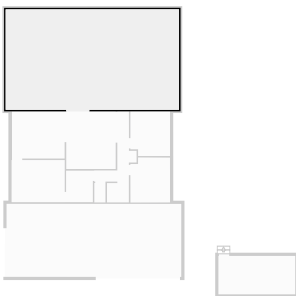
▼ **Bedroom**
Ground Floor

WIDTH: 3.09 m • LENGTH: 3.52 m
AREA: 10.55 m² • PERIMETER: 13.20 m



▼ **Other**
Ground Floor

WIDTH: 13.55 m • LENGTH: 7.85 m
AREA: 106.31 m² • PERIMETER: 42.79 m



▼ Other
Ground Floor

WIDTH: 6.00 m • LENGTH: 3.00 m
AREA: 18.00 m² • PERIMETER: 18.00 m

