

127 Housden St

SUBMITTED BY
Ray White Rockhampton Casey
stockers@cqoz.com

CREATED ON
2020-06-10

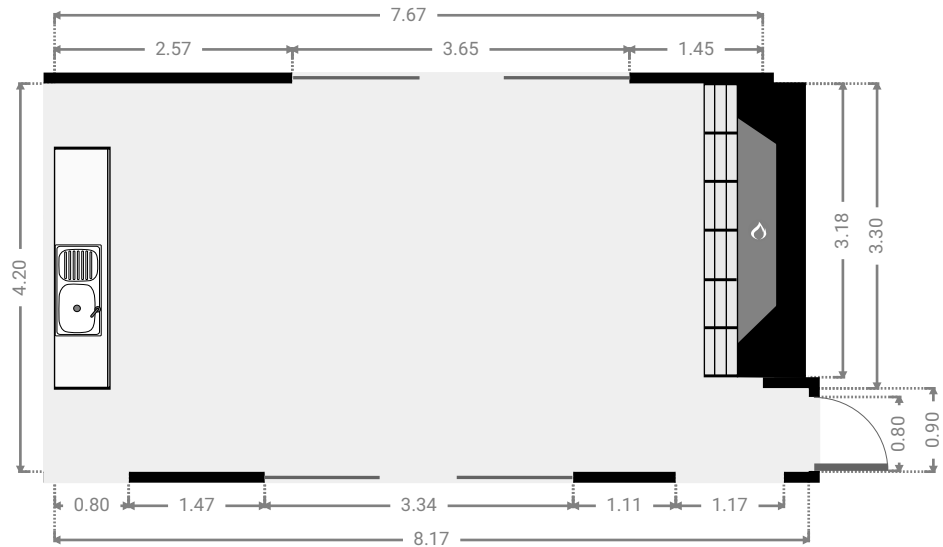
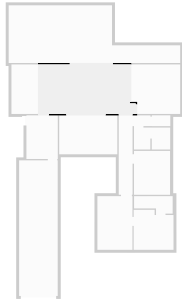
Floors
1

▼ Ground Floor



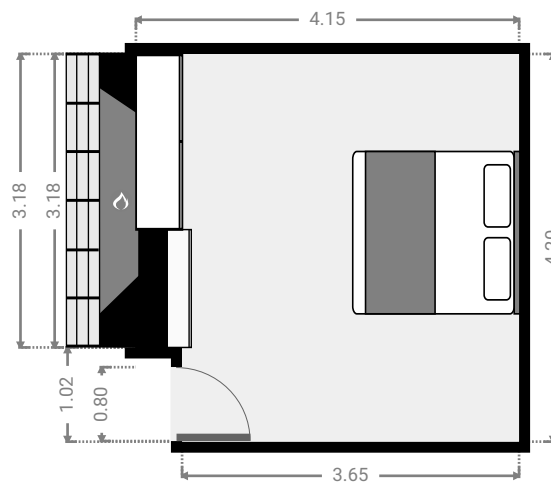
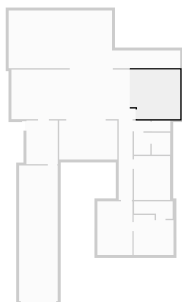
▼ **Living Room**
Ground Floor

WIDTH: 8.17 m • LENGTH: 4.20 m
AREA: 32.68 m² • PERIMETER: 24.74 m



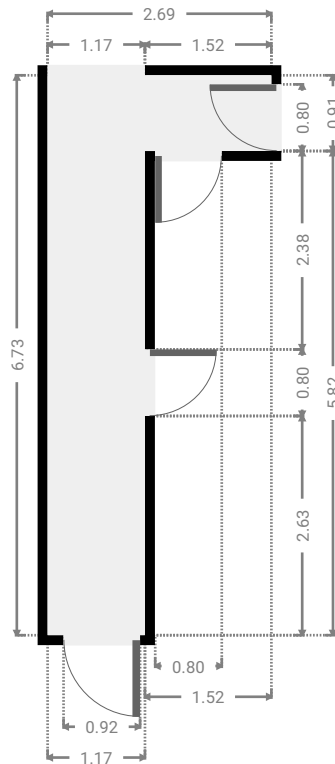
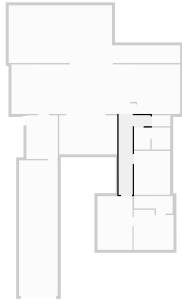
▼ **Bedroom**
Ground Floor

WIDTH: 4.15 m • LENGTH: 4.20 m
AREA: 16.91 m² • PERIMETER: 16.70 m



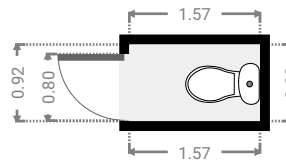
▼ **Hall**
Ground Floor

WIDTH: 2.69 m • LENGTH: 6.73 m
AREA: 9.26 m² • PERIMETER: 18.84 m



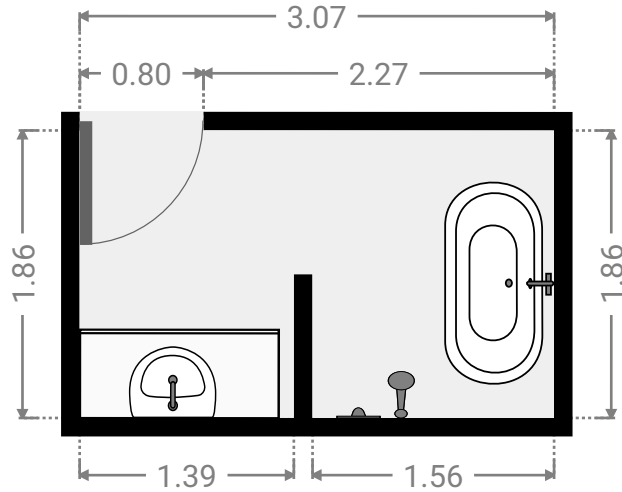
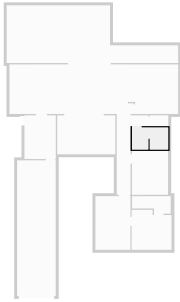
▼ **Toilet**
Ground Floor

WIDTH: 1.57 m • LENGTH: 0.92 m
AREA: 1.44 m² • PERIMETER: 4.98 m



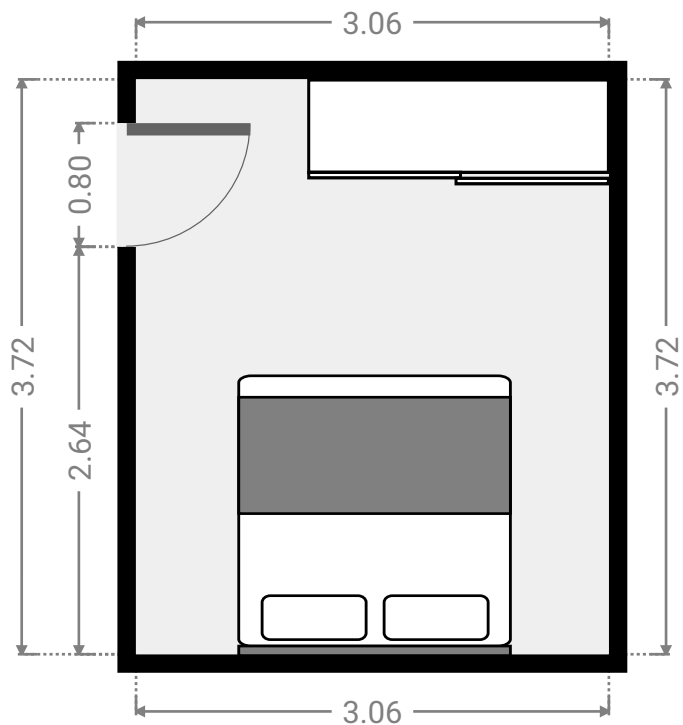
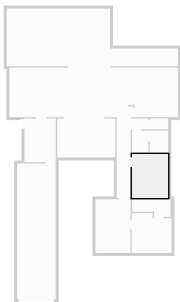
▼ **Bathroom**
Ground Floor

WIDTH: 3.07 m • LENGTH: 1.86 m
AREA: 5.60 m² • PERIMETER: 11.72 m



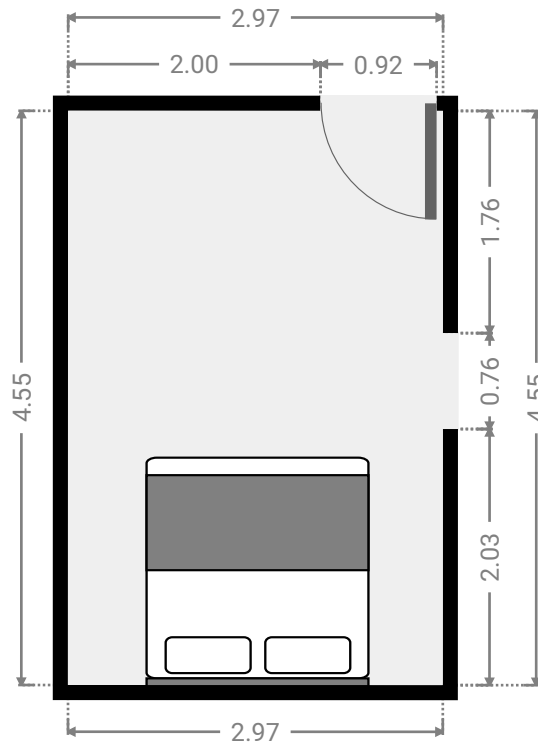
▼ **Bedroom**
Ground Floor

WIDTH: 3.06 m • LENGTH: 3.72 m
AREA: 11.38 m² • PERIMETER: 13.56 m



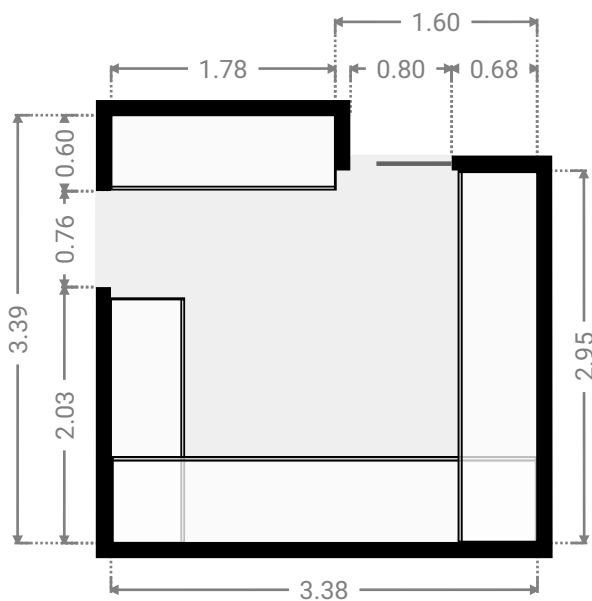
▼ **Master Bedroom**
Ground Floor

WIDTH: 2.97 m • LENGTH: 4.55 m
AREA: 13.52 m² • PERIMETER: 15.04 m



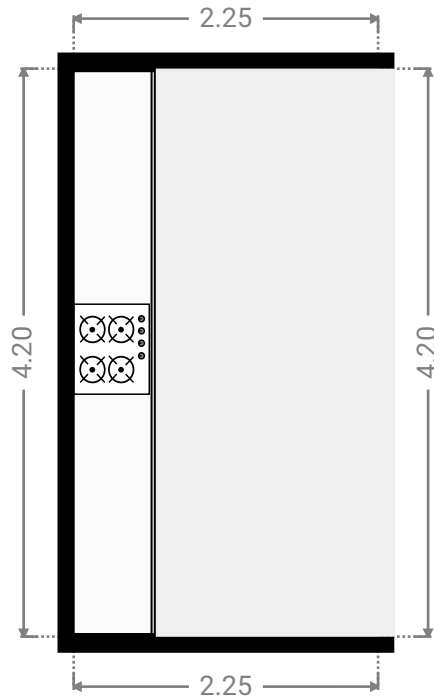
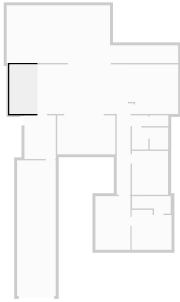
▼ **WIR**
Ground Floor

WIDTH: 3.38 m • LENGTH: 3.39 m
AREA: 10.75 m² • PERIMETER: 13.54 m



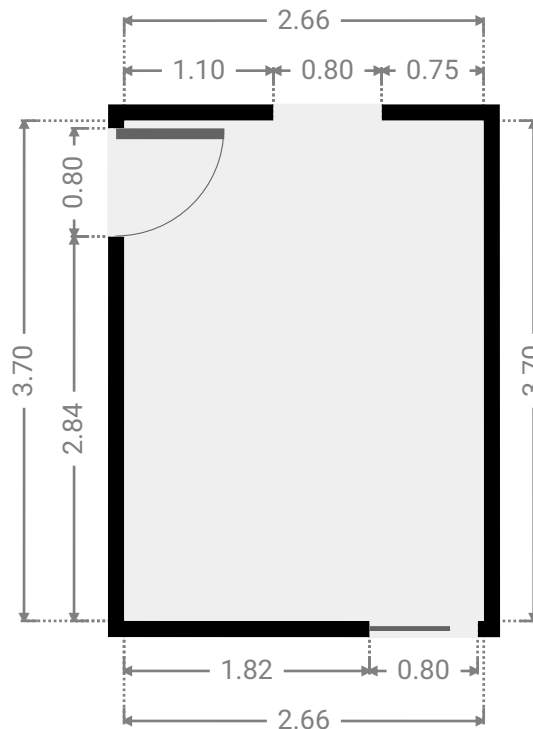
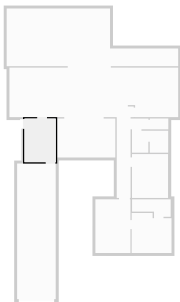
▼ **Kitchen**
Ground Floor

WIDTH: 2.25 m • LENGTH: 4.20 m
AREA: 9.46 m² • PERIMETER: 12.90 m



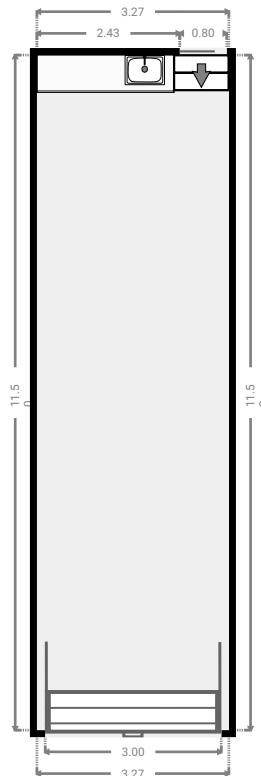
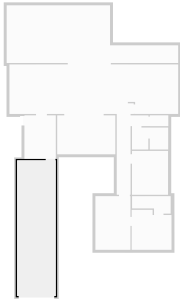
▼ **Dining Room**
Ground Floor

WIDTH: 2.66 m • LENGTH: 3.70 m
AREA: 9.84 m² • PERIMETER: 12.72 m



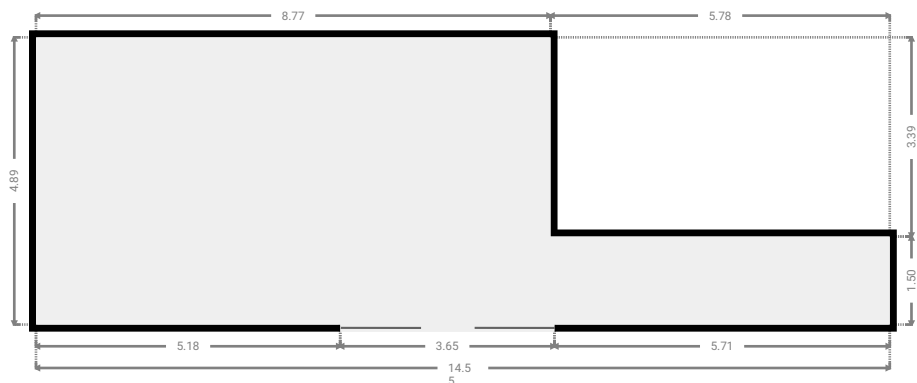
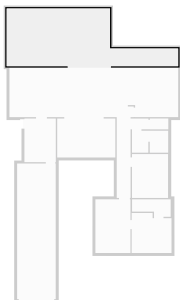
▼ **Garage**
Ground Floor

WIDTH: 3.27 m • LENGTH: 11.50 m
AREA: 37.61 m² • PERIMETER: 29.54 m



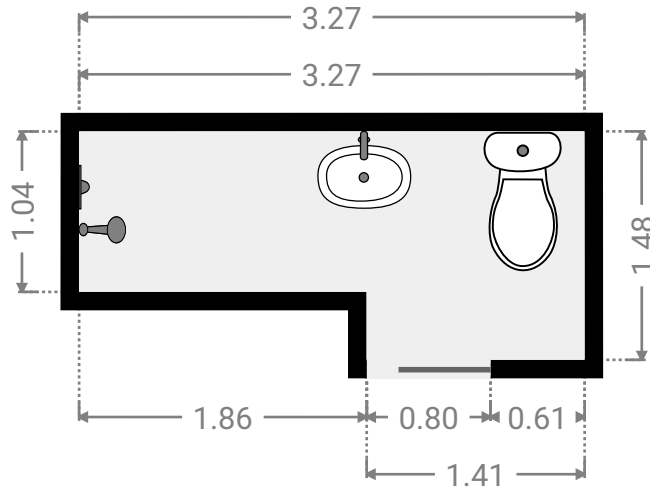
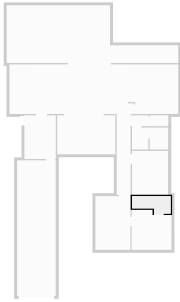
▼ **Patio**
Ground Floor

WIDTH: 14.55 m • LENGTH: 4.89 m
AREA: 51.56 m² • PERIMETER: 38.88 m



▼ Bathroom
Ground Floor

WIDTH: 3.27 m • LENGTH: 1.48 m
AREA: 4.02 m² • PERIMETER: 9.50 m



▼ Other
Ground Floor

WIDTH: 4.93 m • LENGTH: 3.30 m
AREA: 16.27 m² • PERIMETER: 16.46 m

