

120 Lion Creek Road

SUBMITTED BY

Ray White Rockhampton Casey
stockers@cqoz.com

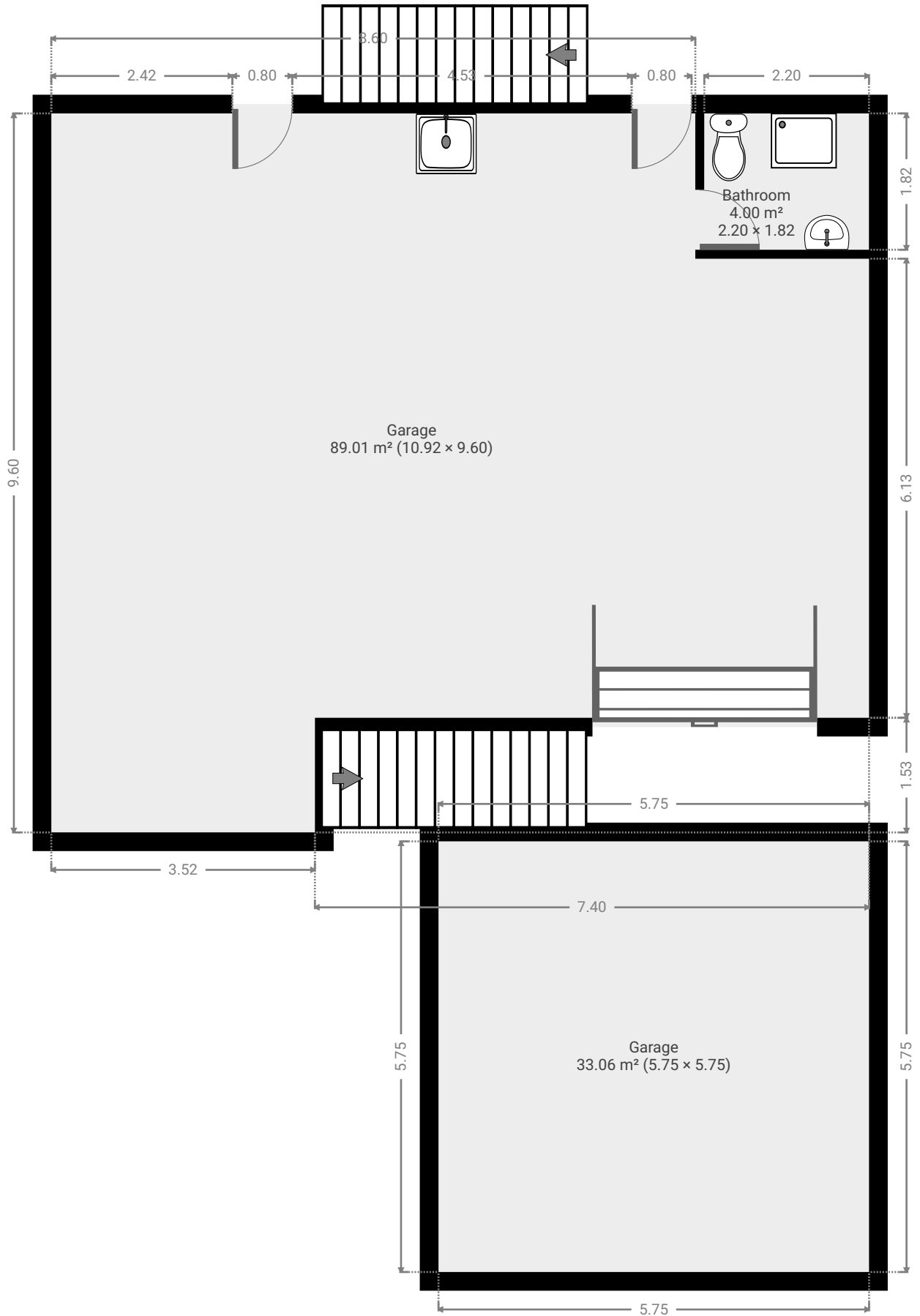
CREATED ON

2022-07-25

Floors

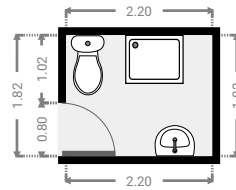
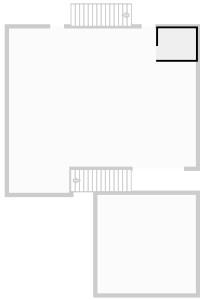
2

▼ Ground Floor



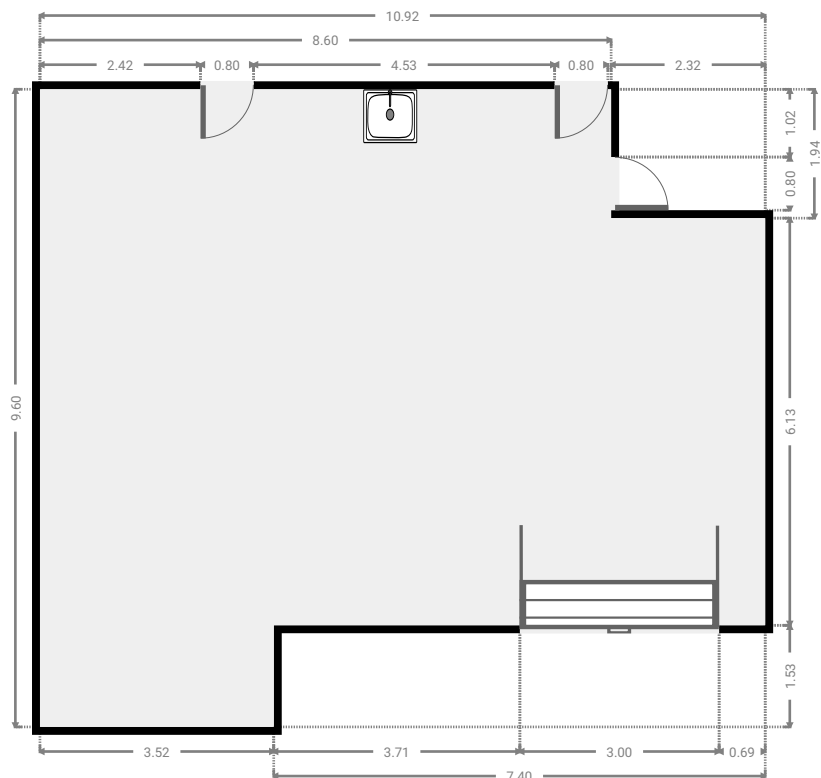
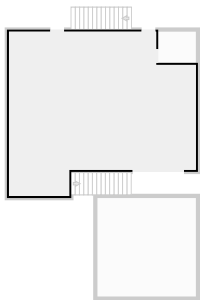
▼ **Bathroom**
Ground Floor

WIDTH: 2.20 m • LENGTH: 1.82 m
AREA: 4.00 m² • PERIMETER: 8.04 m



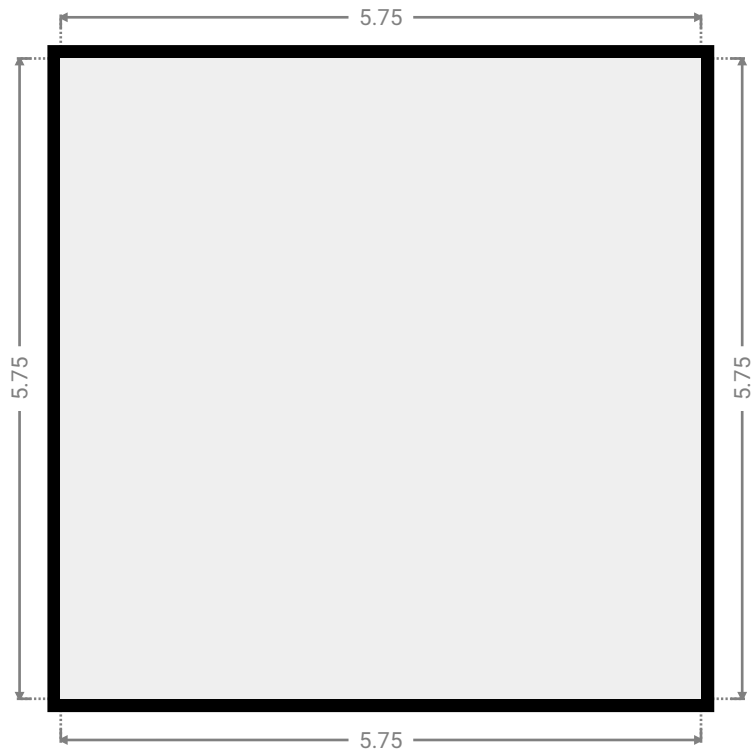
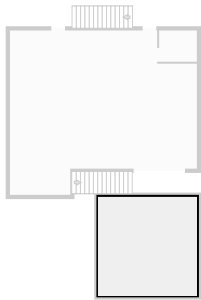
▼ **Garage**
Ground Floor

WIDTH: 10.92 m • LENGTH: 9.60 m
AREA: 89.01 m² • PERIMETER: 41.04 m



▼ **Garage**
Ground Floor

WIDTH: 5.75 m • LENGTH: 5.75 m
AREA: 33.06 m² • PERIMETER: 23.00 m

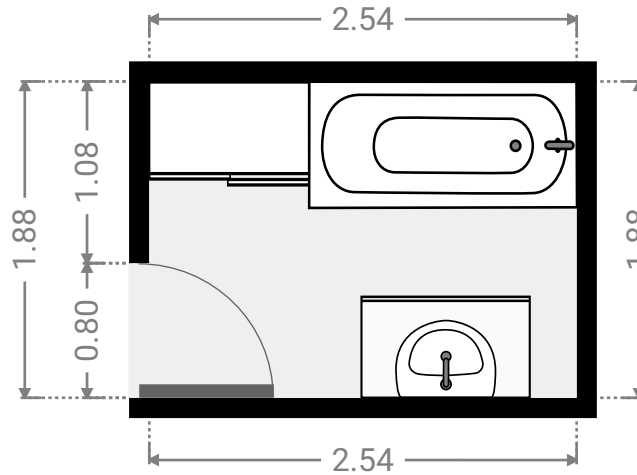
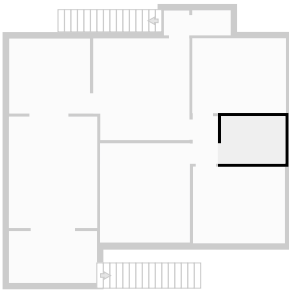


▼ 1st Floor



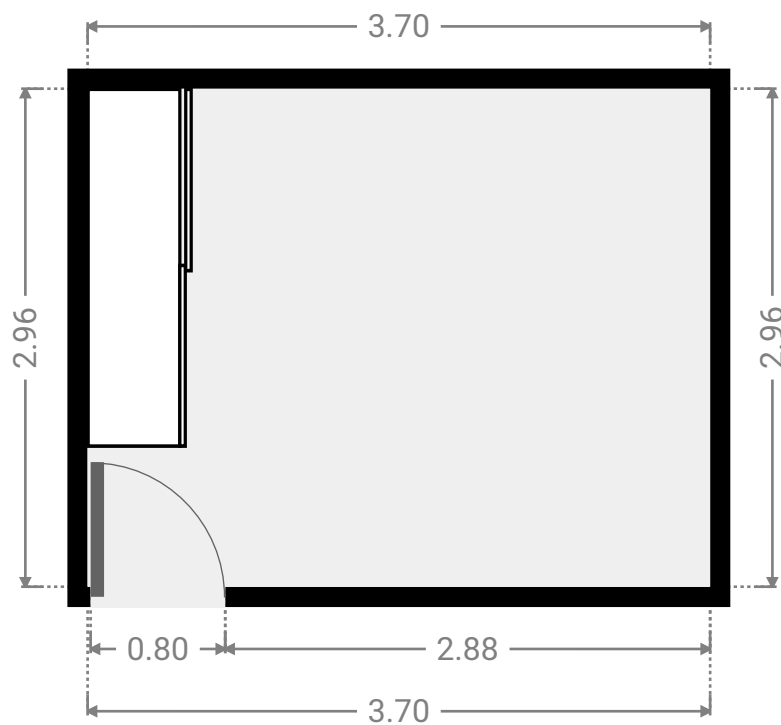
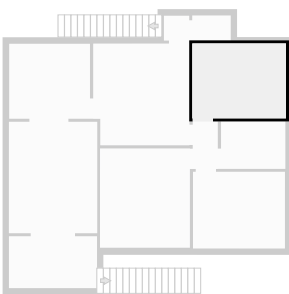
▼ **Bathroom**
1st Floor

WIDTH: 2.54 m • LENGTH: 1.88 m
AREA: 4.78 m² • PERIMETER: 8.84 m



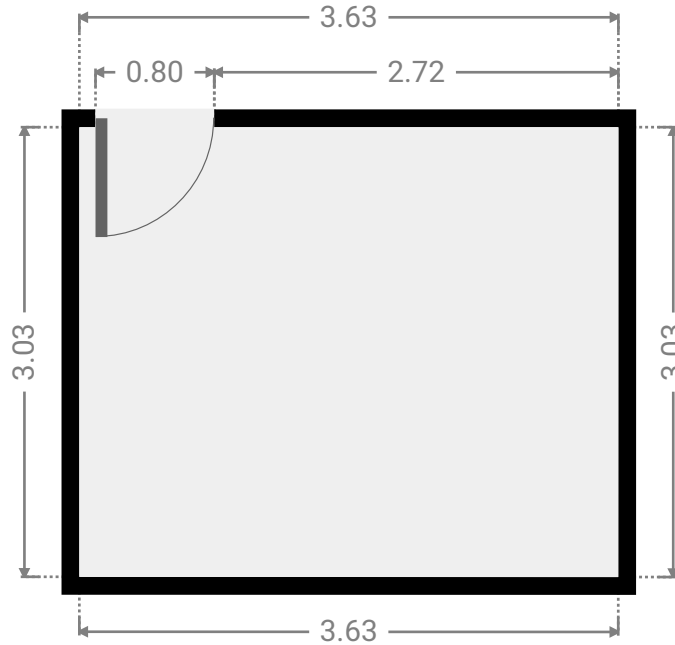
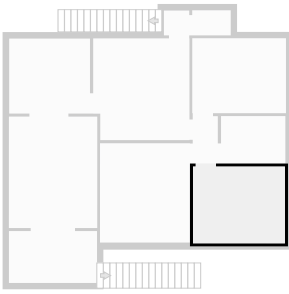
▼ **Bedroom**
1st Floor

WIDTH: 3.70 m • LENGTH: 2.96 m
AREA: 10.95 m² • PERIMETER: 13.32 m



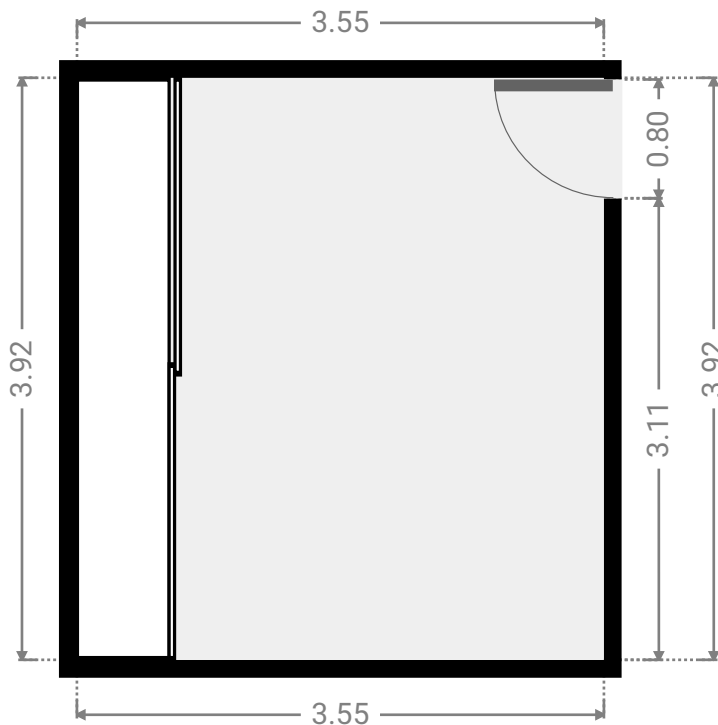
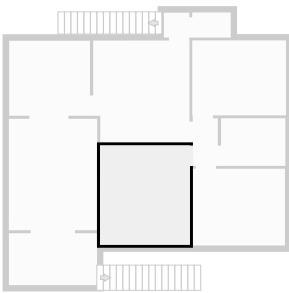
▼ **Bedroom**
1st Floor

WIDTH: 3.63 m • LENGTH: 3.03 m
AREA: 11.00 m² • PERIMETER: 13.32 m



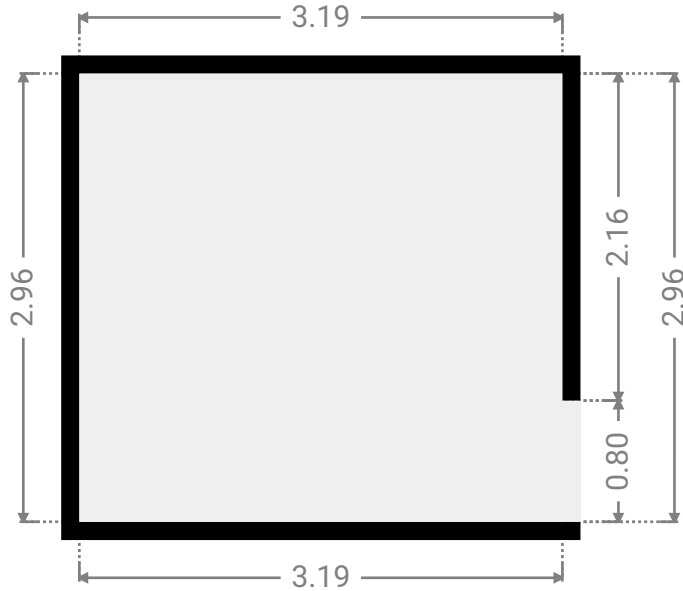
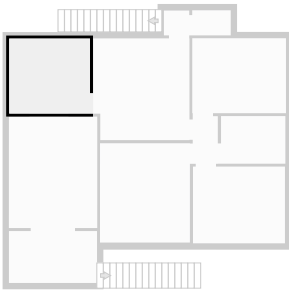
▼ **Bedroom**
1st Floor

WIDTH: 3.55 m • LENGTH: 3.92 m
AREA: 13.91 m² • PERIMETER: 14.94 m



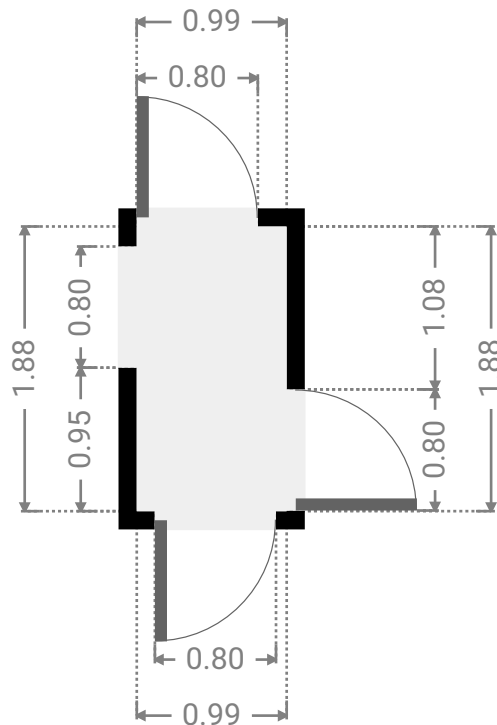
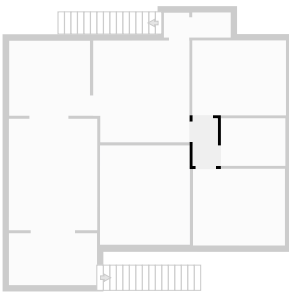
▼ Dining Room
1st Floor

WIDTH: 3.19 m • LENGTH: 2.96 m
AREA: 9.44 m² • PERIMETER: 12.30 m



▼ Hall
1st Floor

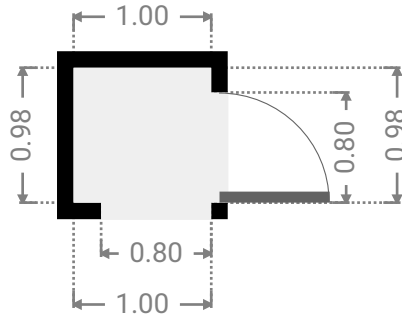
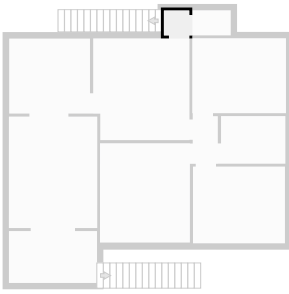
WIDTH: 0.99 m • LENGTH: 1.88 m
AREA: 1.86 m² • PERIMETER: 5.74 m



FLOORS: 2

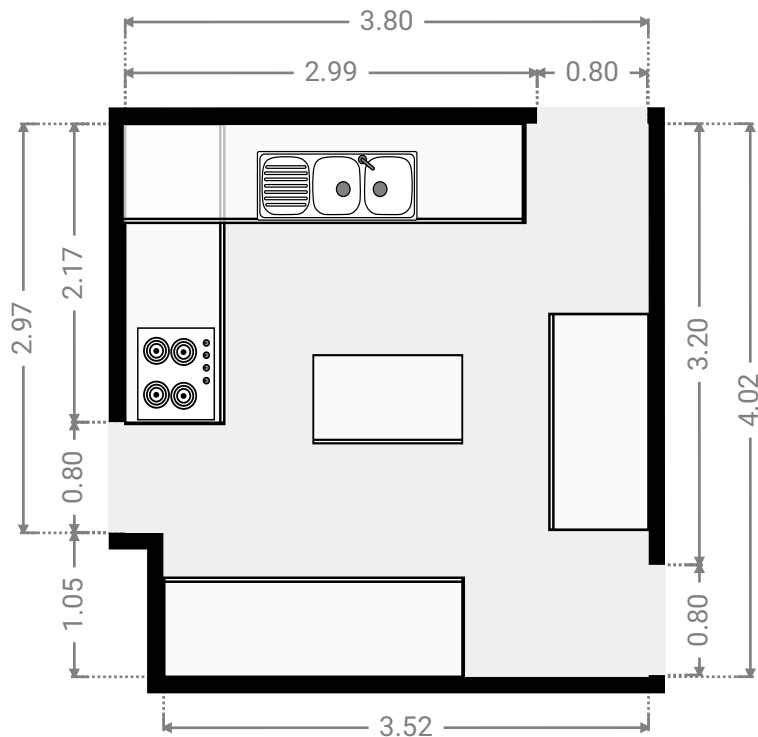
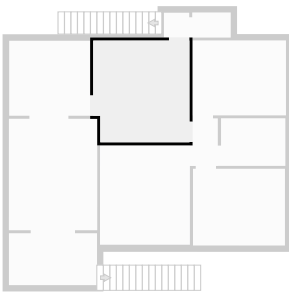
▼ Hall
1st Floor

WIDTH: 1.00 m • LENGTH: 0.98 m
AREA: 0.98 m² • PERIMETER: 3.96 m



▼ Kitchen
1st Floor

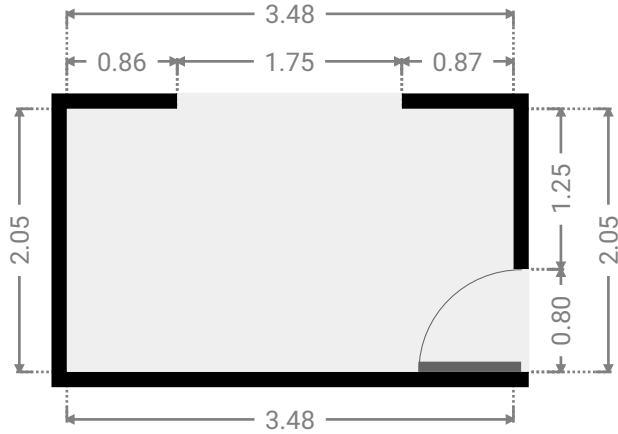
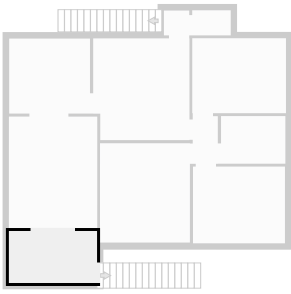
WIDTH: 3.80 m • LENGTH: 4.02 m
AREA: 14.97 m² • PERIMETER: 15.63 m



FLOORS: 2

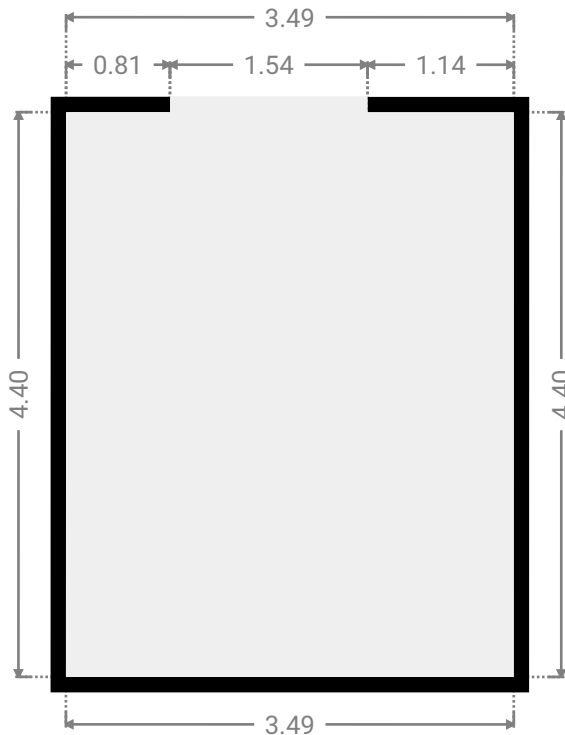
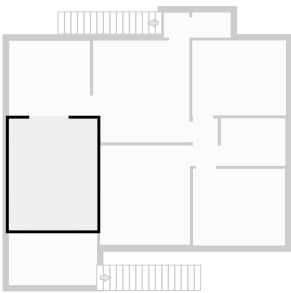
▼ Living Room
1st Floor

WIDTH: 3.48 m • LENGTH: 2.05 m
AREA: 7.13 m² • PERIMETER: 11.06 m



▼ Living Room
1st Floor

WIDTH: 3.49 m • LENGTH: 4.40 m
AREA: 15.35 m² • PERIMETER: 15.78 m



▼ Toilet
1st Floor

WIDTH: 1.52 m • LENGTH: 0.99 m
AREA: 1.50 m² • PERIMETER: 5.02 m

