

12 Wackford STREET

SUBMITTED BY

Ray White Rockhampton Casey
stockers@cqoz.com

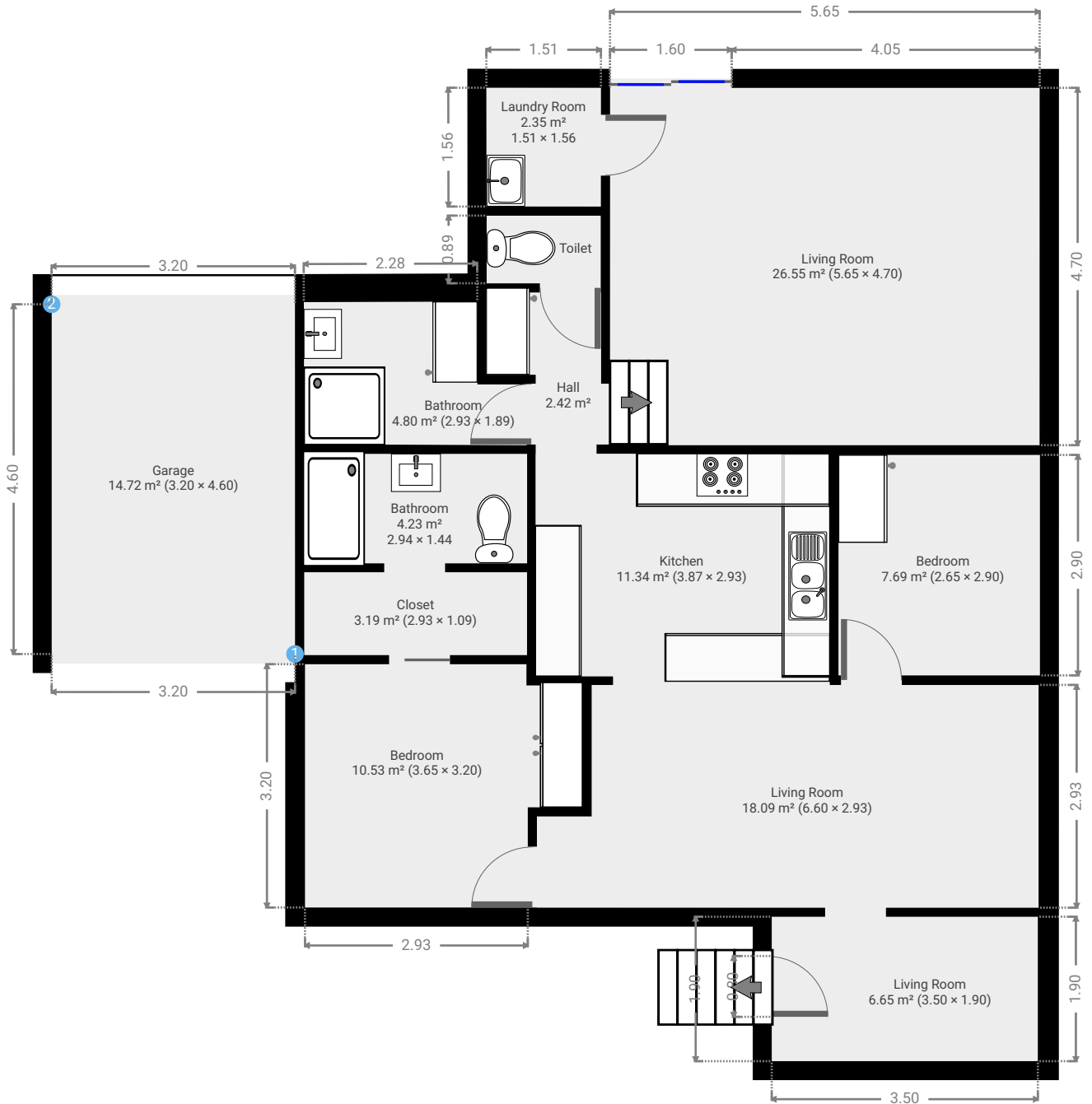
CREATED ON

2022-09-29

Floors

1

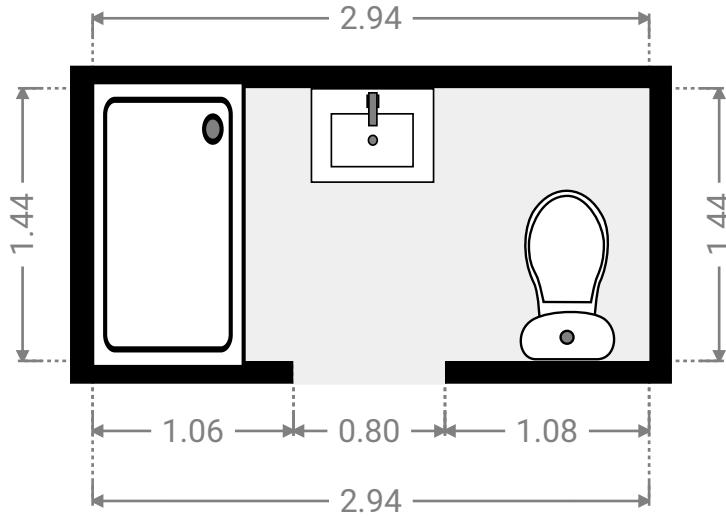
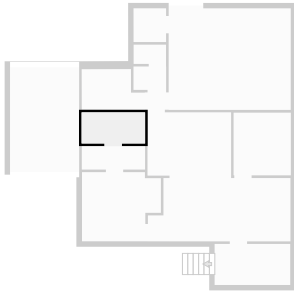
▼ Ground Floor



FLOORS: 1

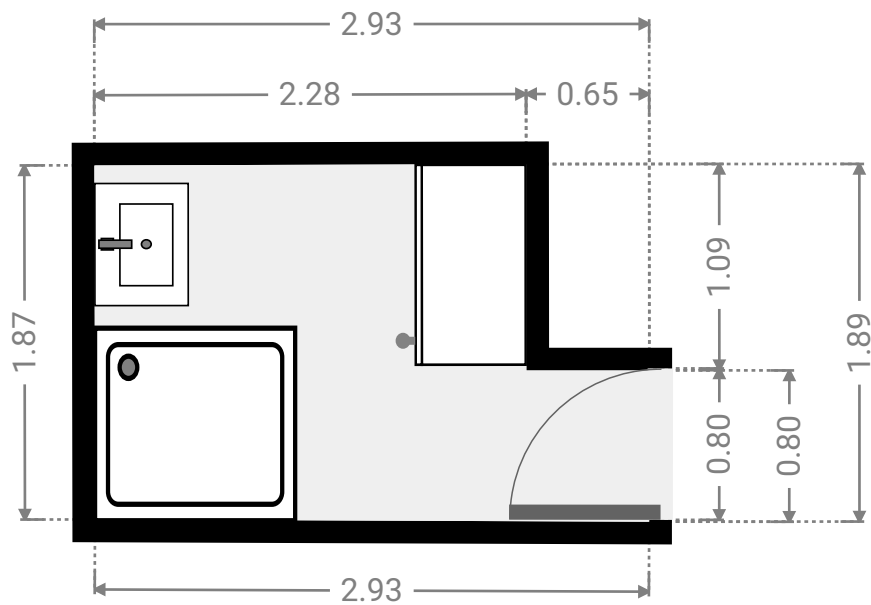
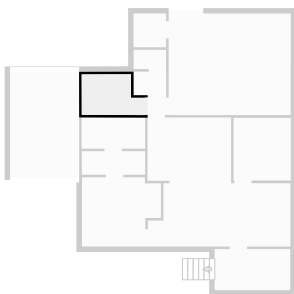
▼ Bathroom
Ground Floor

WIDTH: 2.94 m • LENGTH: 1.44 m
AREA: 4.23 m² • PERIMETER: 8.76 m



▼ Bathroom
Ground Floor

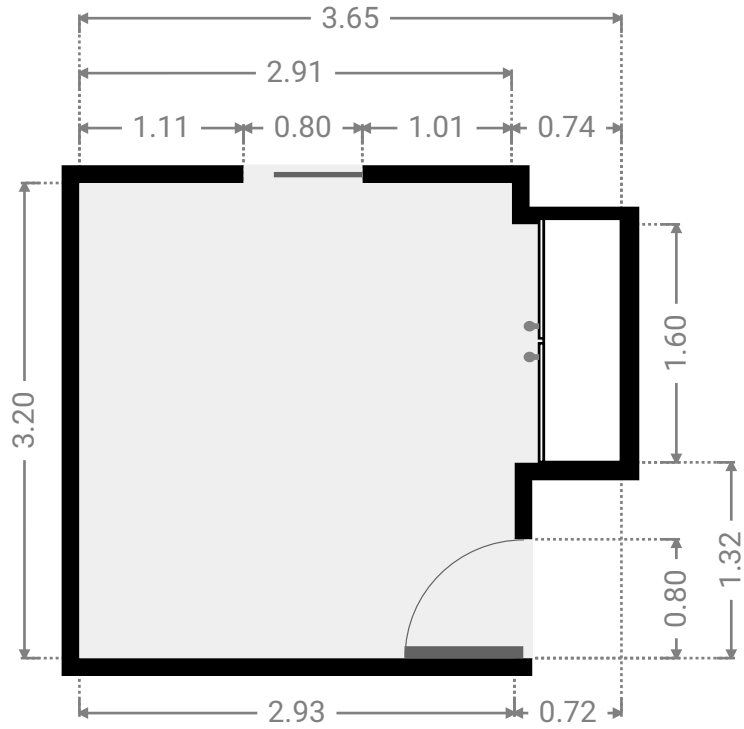
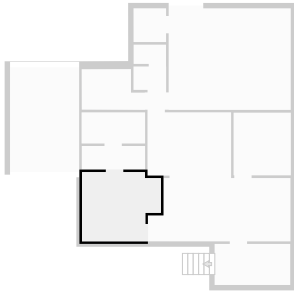
WIDTH: 2.93 m • LENGTH: 1.89 m
AREA: 4.80 m² • PERIMETER: 9.62 m



FLOORS: 1

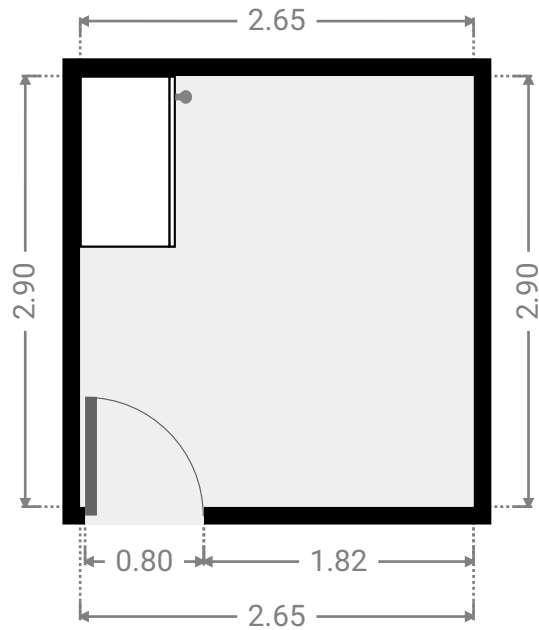
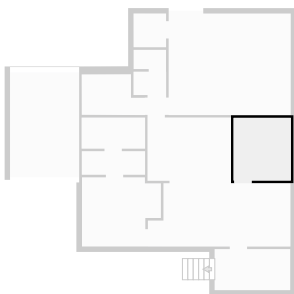
▼ Bedroom
Ground Floor

WIDTH: 3.65 m • LENGTH: 3.20 m
AREA: 10.53 m² • PERIMETER: 13.70 m



▼ Bedroom
Ground Floor

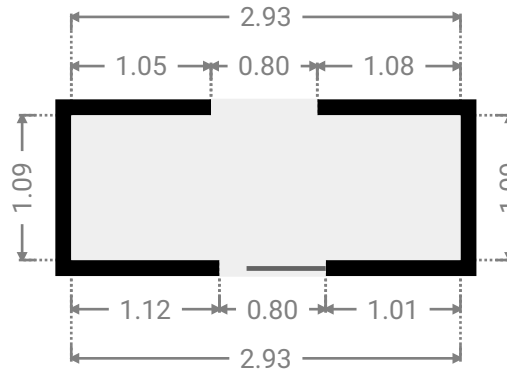
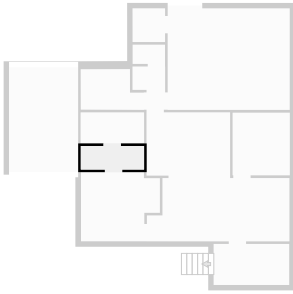
WIDTH: 2.65 m • LENGTH: 2.90 m
AREA: 7.69 m² • PERIMETER: 11.10 m



FLOORS: 1

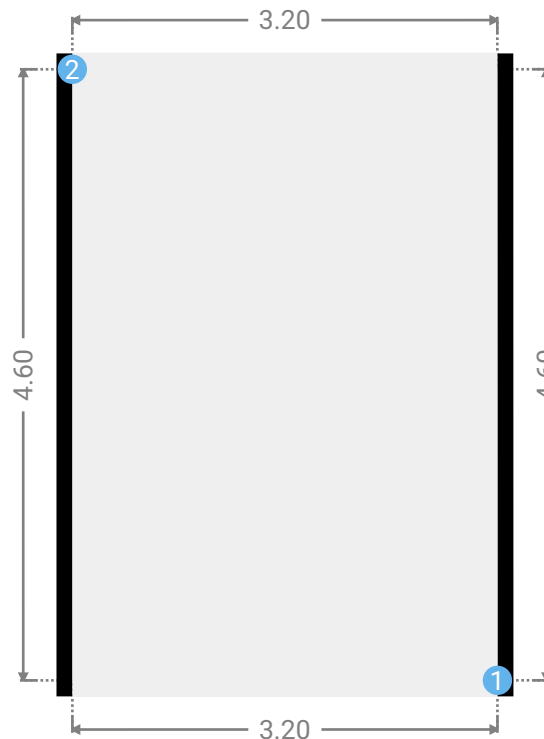
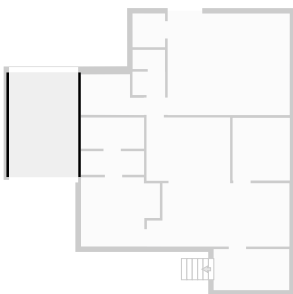
▼ **Closet**
Ground Floor

WIDTH: 2.93 m • LENGTH: 1.09 m
AREA: 3.19 m² • PERIMETER: 8.04 m



▼ **Garage**
Ground Floor

WIDTH: 3.20 m • LENGTH: 4.60 m
AREA: 14.72 m² • PERIMETER: 15.60 m



▼ Garage/Ground Floor

1 OPENING

Height
0.00 m



2 OPENING

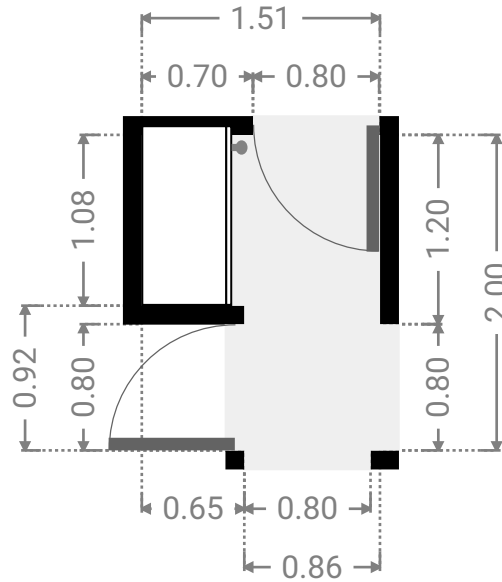
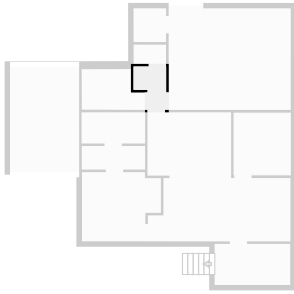
Height
0.00 m



FLOORS: 1

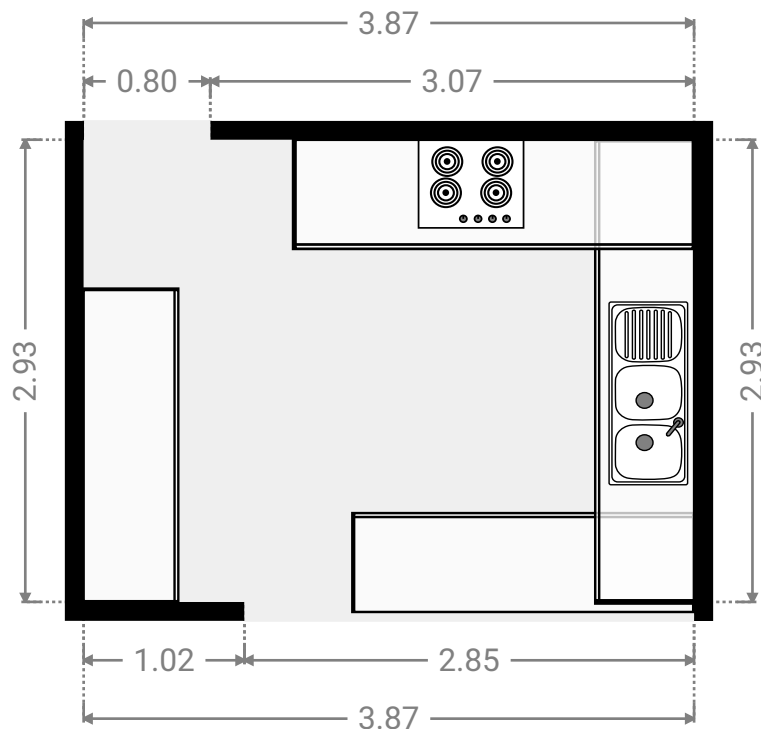
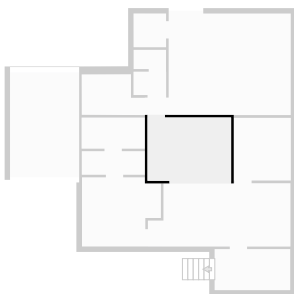
▼ **Hall**
Ground Floor

WIDTH: 1.51 m • LENGTH: 2.00 m
AREA: 2.42 m² • PERIMETER: 7.02 m



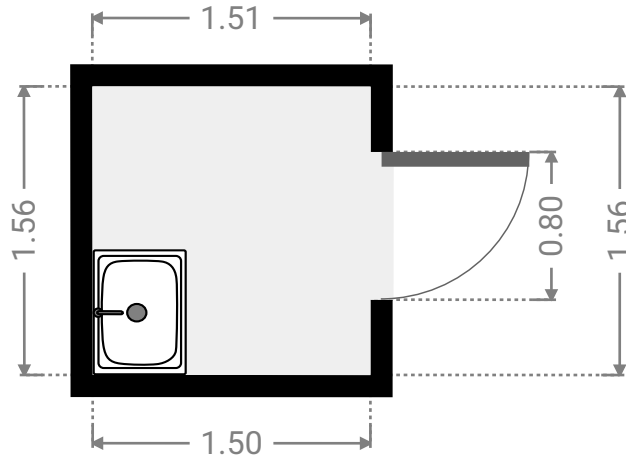
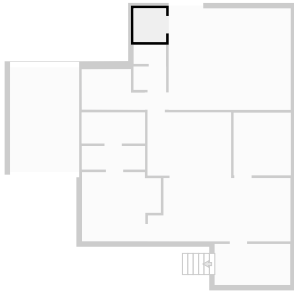
▼ **Kitchen**
Ground Floor

WIDTH: 3.87 m • LENGTH: 2.93 m
AREA: 11.34 m² • PERIMETER: 13.60 m



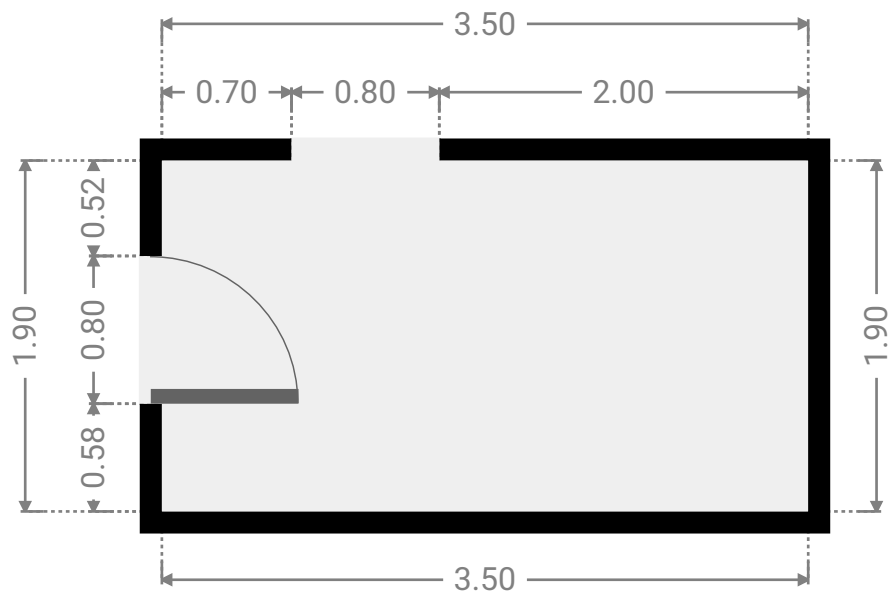
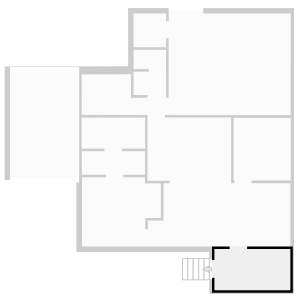
▼ **Laundry Room**
Ground Floor

WIDTH: 1.51 m • LENGTH: 1.56 m
AREA: 2.35 m² • PERIMETER: 6.13 m



▼ **Living Room**
Ground Floor

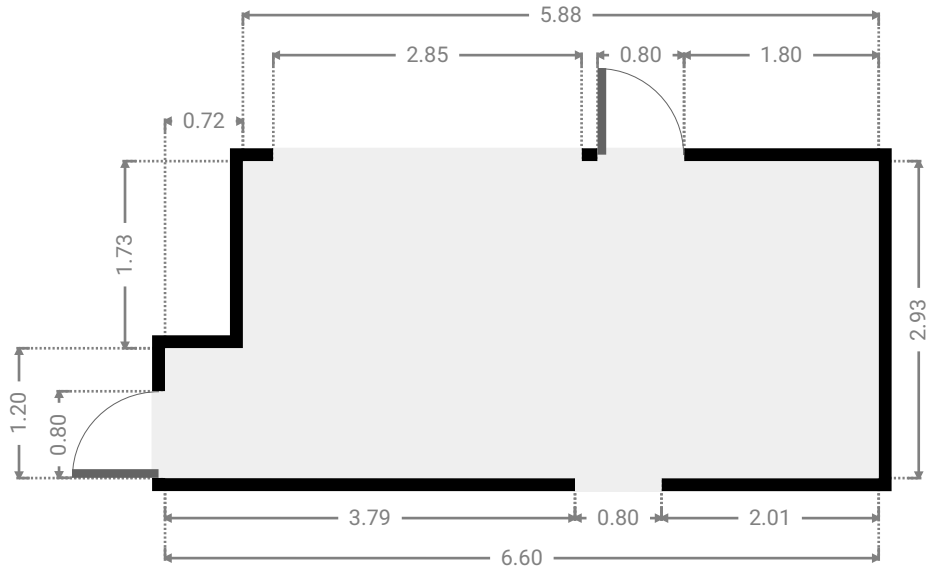
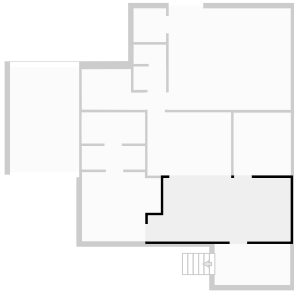
WIDTH: 3.50 m • LENGTH: 1.90 m
AREA: 6.65 m² • PERIMETER: 10.80 m



FLOORS: 1

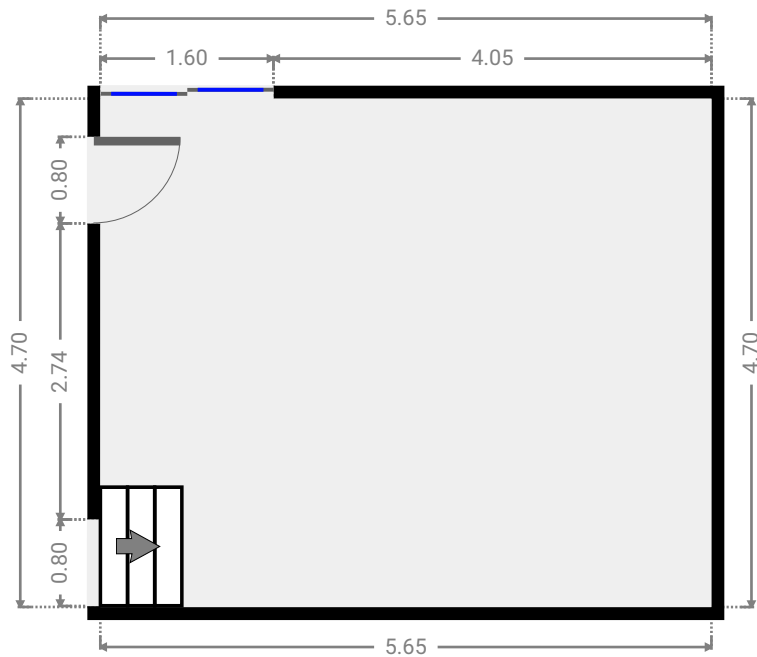
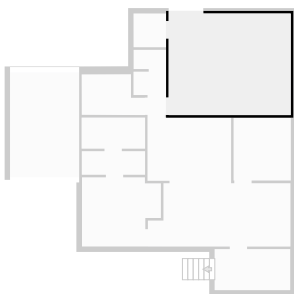
▼ Living Room
Ground Floor

WIDTH: 6.60 m • LENGTH: 2.93 m
AREA: 18.09 m² • PERIMETER: 19.06 m



▼ Living Room
Ground Floor

WIDTH: 5.65 m • LENGTH: 4.70 m
AREA: 26.55 m² • PERIMETER: 20.70 m



▼ Toilet
Ground Floor

WIDTH: 1.50 m • LENGTH: 0.89 m
AREA: 1.33 m² • PERIMETER: 4.78 m

