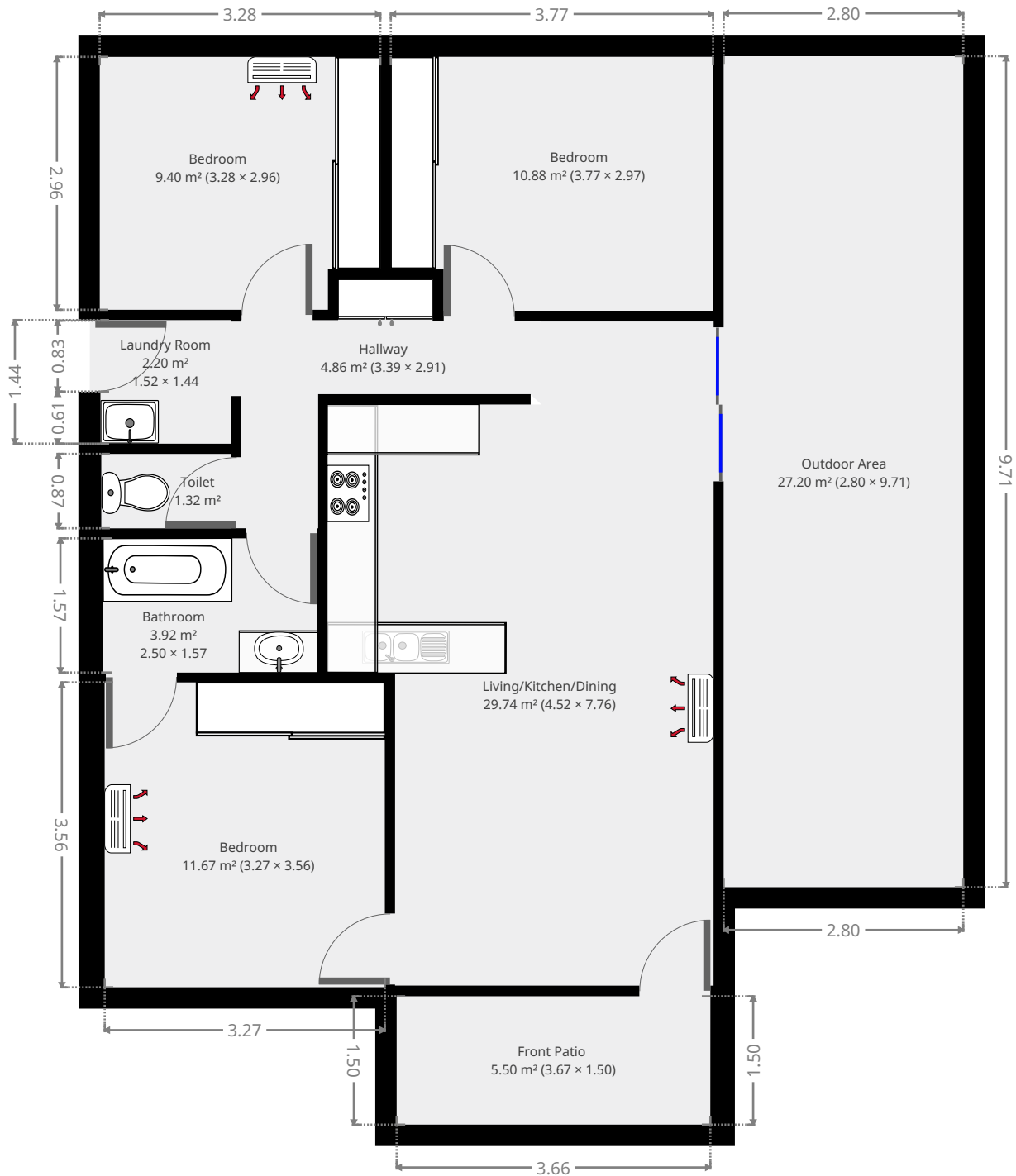


12 Rosewood Avenue

Ground Floor



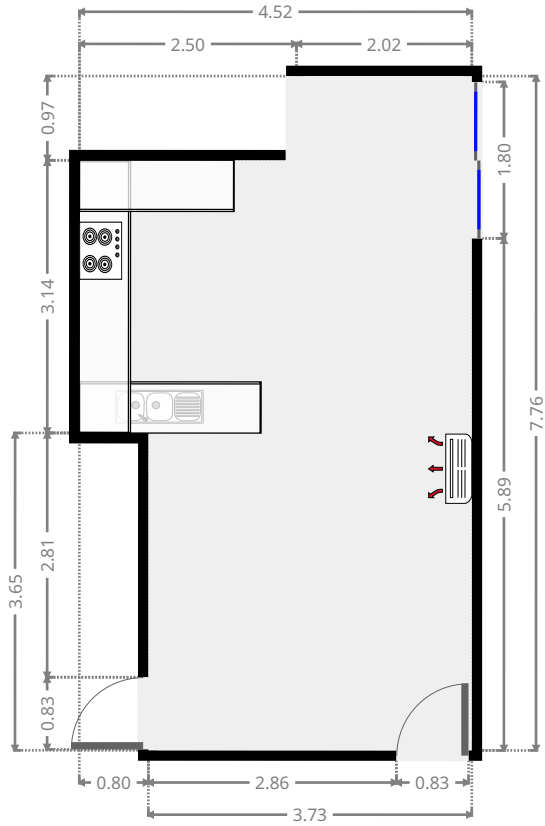
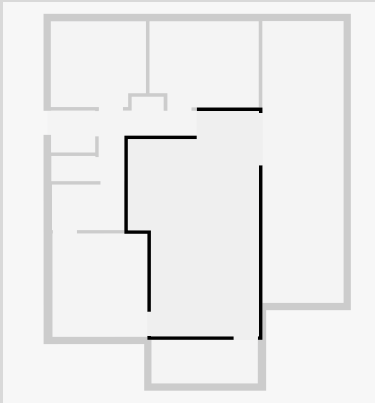
THIS FLOORPLAN IS PROVIDED WITHOUT WARRANTY OF ANY KIND. SENSOPIA DISCLAIMS ANY WARRANTY INCLUDING, WITHOUT LIMITATION, SATISFACTORY QUALITY OR ACCURACY OF DIMENSIONS.



12 Rosewood Avenue

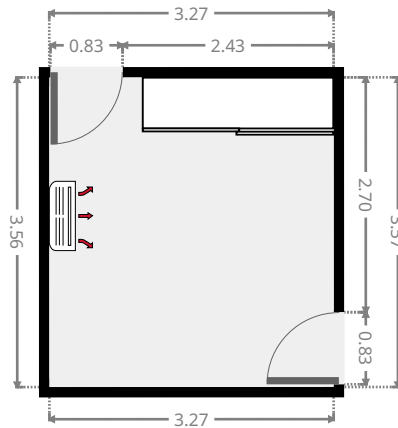
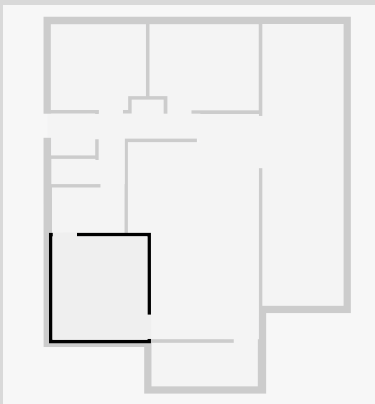
Living/Kitchen/Dining

Width: 4.52 m
 Length: 7.76 m
 Area: 29.74 m²
 Perimeter: 24.56 m



Bedroom

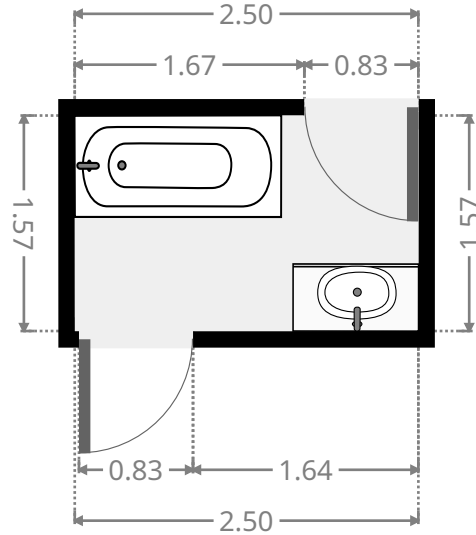
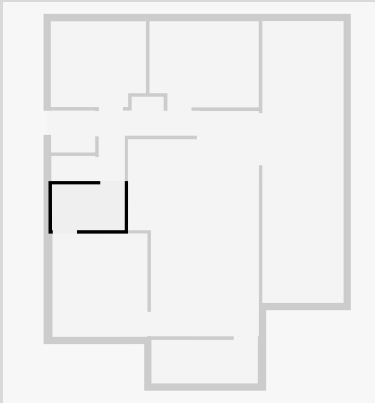
Width: 3.27 m
 Length: 3.56 m
 Area: 11.67 m²
 Perimeter: 13.67 m



12 Rosewood Avenue

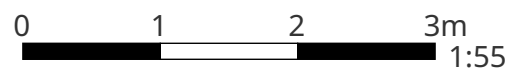
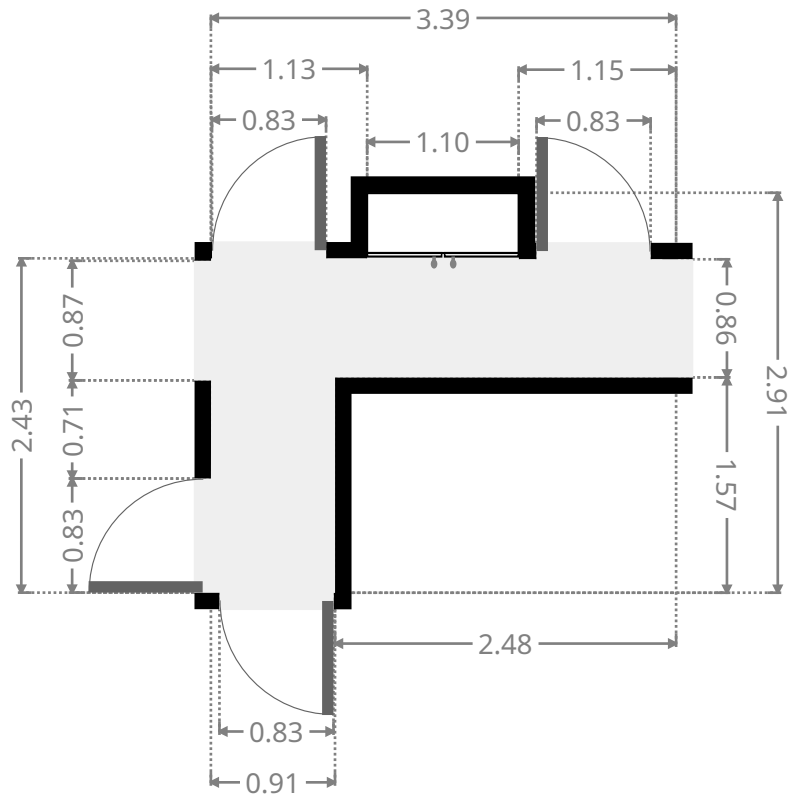
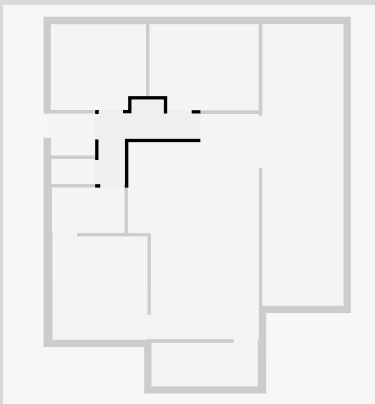
Bathroom

Width: 1.57 m
 Length: 2.50 m
 Area: 3.92 m²
 Perimeter: 8.14 m



Hallway

Width: 2.91 m
 Length: 3.39 m
 Area: 4.86 m²
 Perimeter: 12.59 m

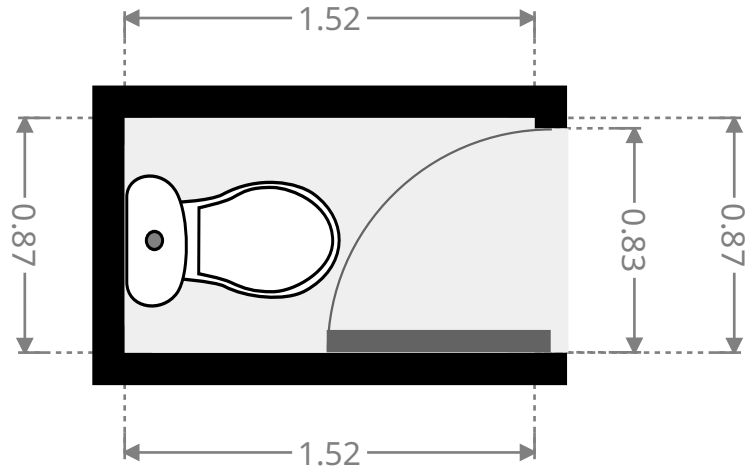
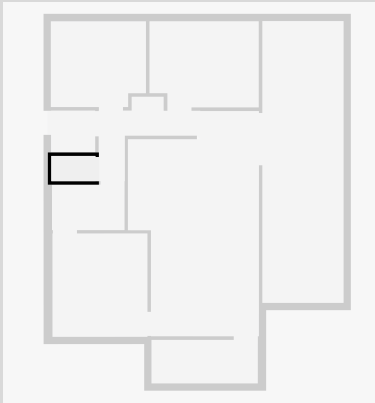


THIS FLOORPLAN IS PROVIDED WITHOUT WARRANTY OF ANY KIND. SENSOPIA DISCLAIMS ANY WARRANTY INCLUDING, WITHOUT LIMITATION, SATISFACTORY QUALITY OR ACCURACY OF DIMENSIONS.

12 Rosewood Avenue

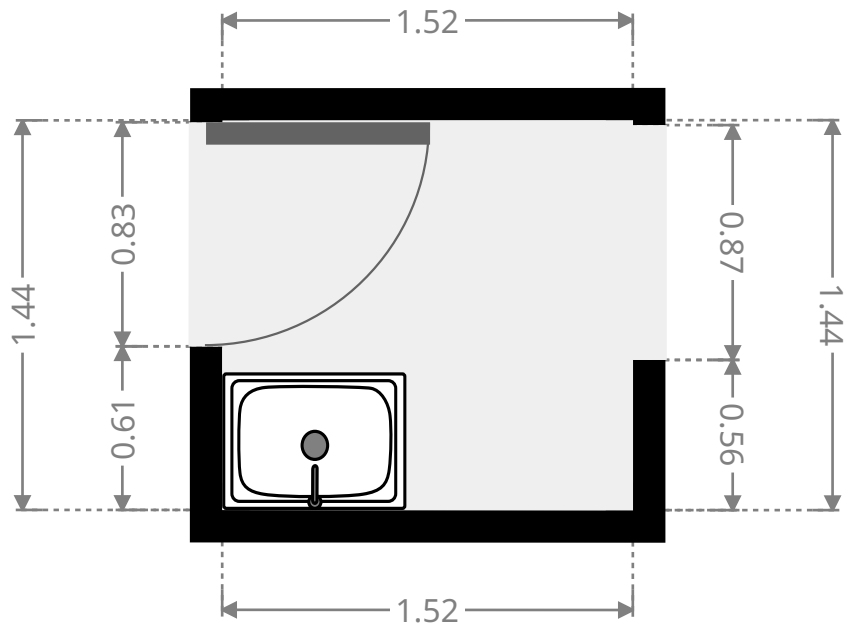
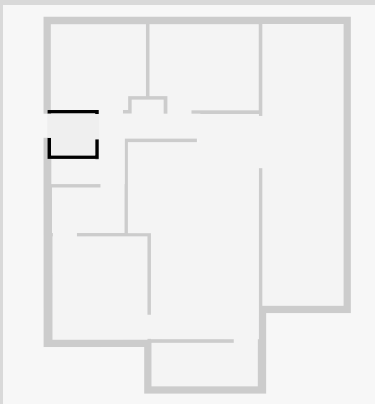
Toilet / Half Bath

Width: 0.87 m
Length: 1.52 m
Area: 1.32 m²
Perimeter: 4.78 m



Laundry Room

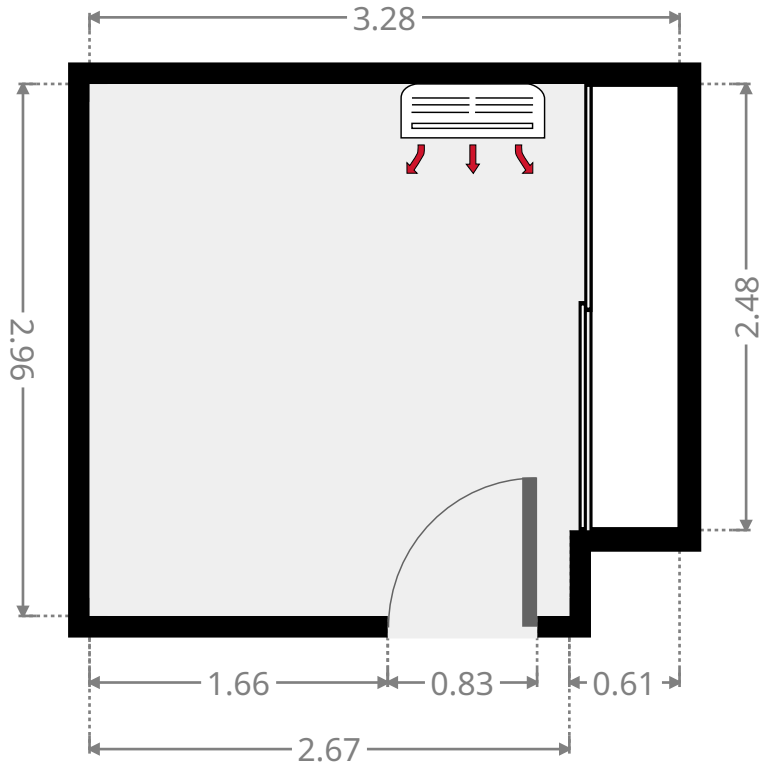
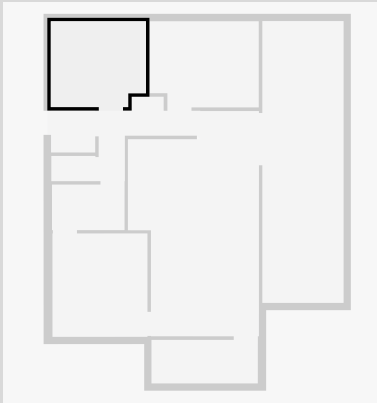
Width: 1.44 m
Length: 1.52 m
Area: 2.20 m²
Perimeter: 5.93 m



12 Rosewood Avenue

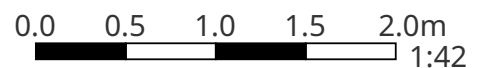
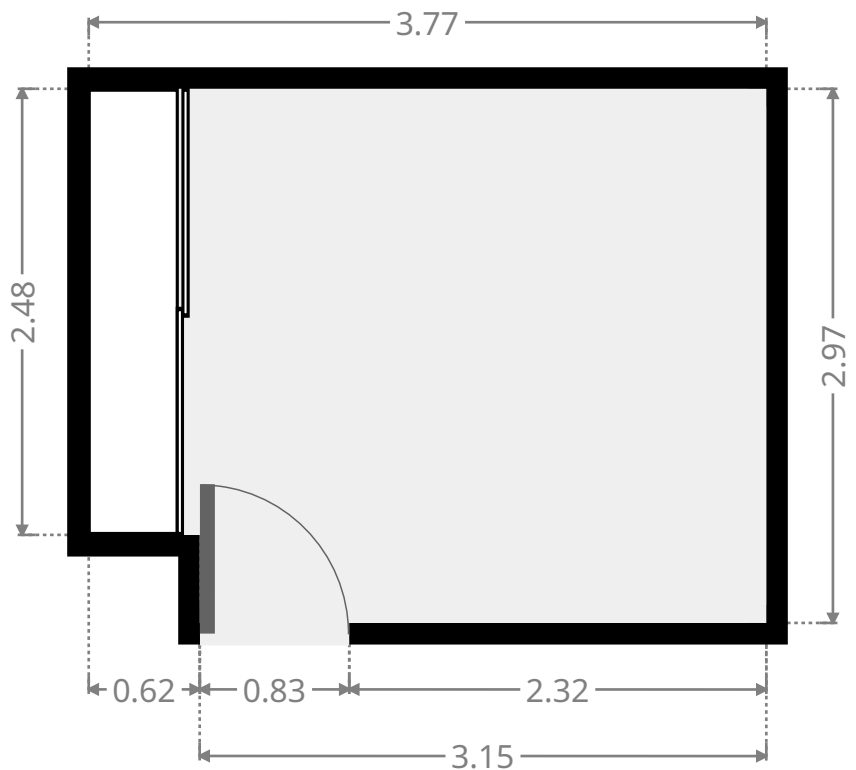
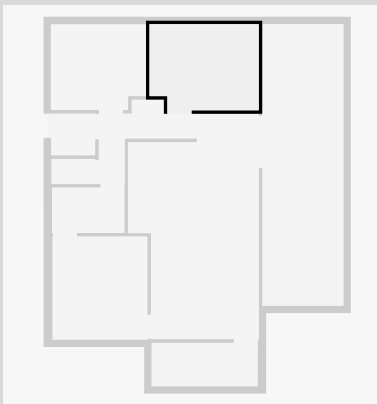
Bedroom

Width: 2.96 m
 Length: 3.28 m
 Area: 9.40 m²
 Perimeter: 12.47 m



Bedroom

Width: 2.97 m
 Length: 3.77 m
 Area: 10.88 m²
 Perimeter: 13.47 m

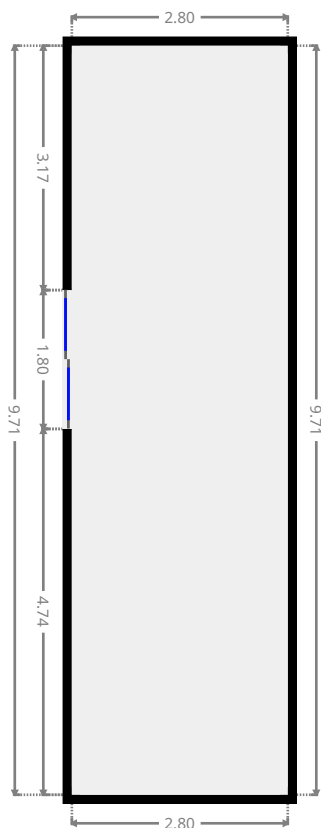
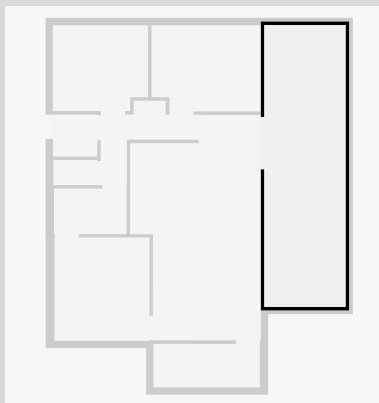


THIS FLOORPLAN IS PROVIDED WITHOUT WARRANTY OF ANY KIND. SENSOPIA DISCLAIMS ANY WARRANTY INCLUDING, WITHOUT LIMITATION, SATISFACTORY QUALITY OR ACCURACY OF DIMENSIONS.

12 Rosewood Avenue

Outdoor Area

Width: 2.80 m
Length: 9.71 m
Area: 27.20 m²
Perimeter: 25.03 m



Front Patio

Width: 1.50 m
Length: 3.67 m
Area: 5.50 m²
Perimeter: 10.33 m

