

# 12 Queen Street

**SUBMITTED BY**

Ray White Rockhampton Casey  
stockers@cqoz.com

---

**CREATED ON**

2022-10-19

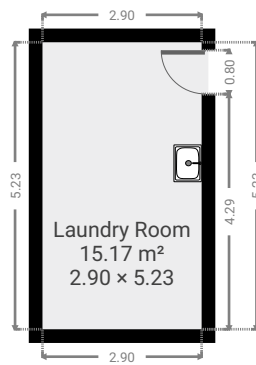
---

**Floors**

2

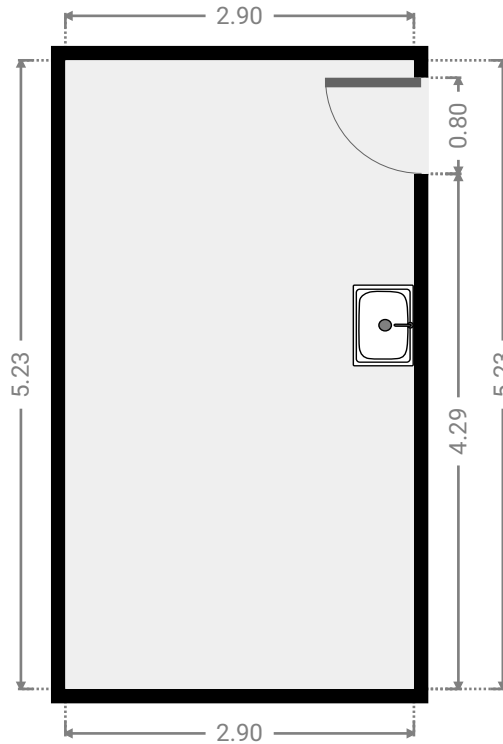
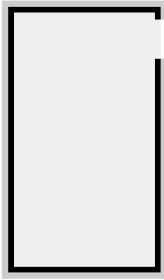
---

## ▼ Basement

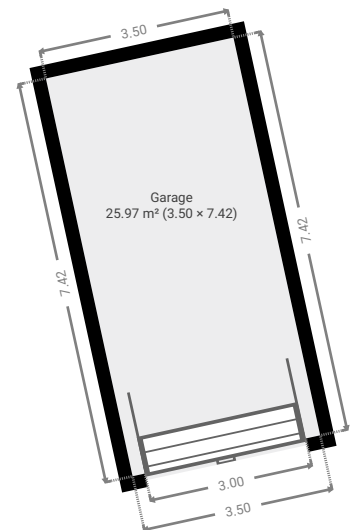
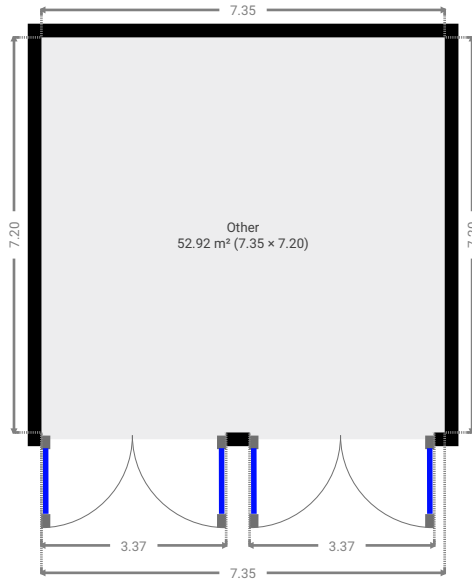


▼ Laundry Room  
Basement

WIDTH: 2.90 m • LENGTH: 5.23 m  
AREA: 15.17 m<sup>2</sup> • PERIMETER: 16.26 m

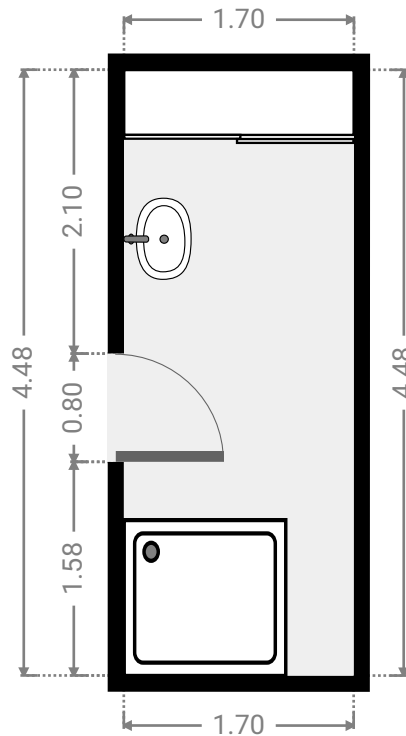
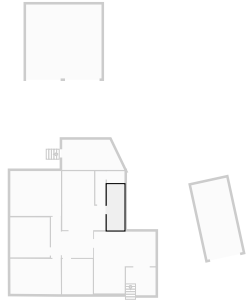


## ▼ Ground Floor



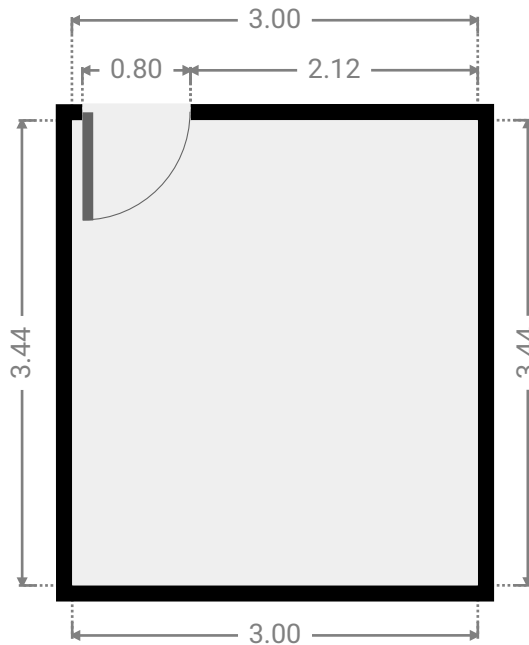
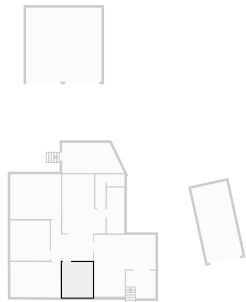
▼ Bathroom  
Ground Floor

WIDTH: 1.70 m • LENGTH: 4.48 m  
AREA: 7.62 m<sup>2</sup> • PERIMETER: 12.36 m



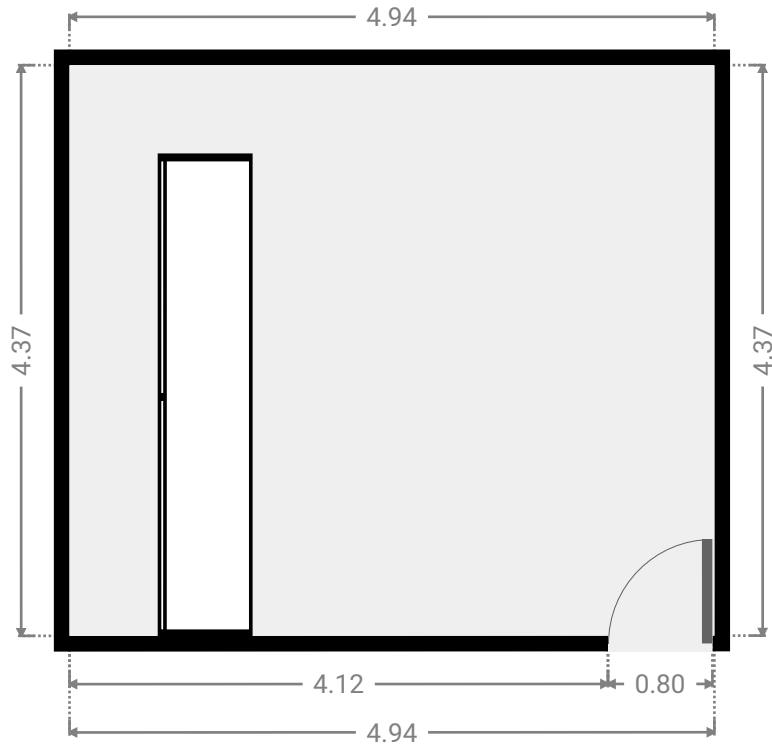
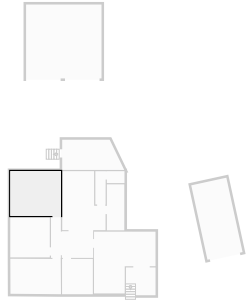
▼ Bedroom  
Ground Floor

WIDTH: 3.00 m • LENGTH: 3.44 m  
AREA: 10.32 m<sup>2</sup> • PERIMETER: 12.88 m



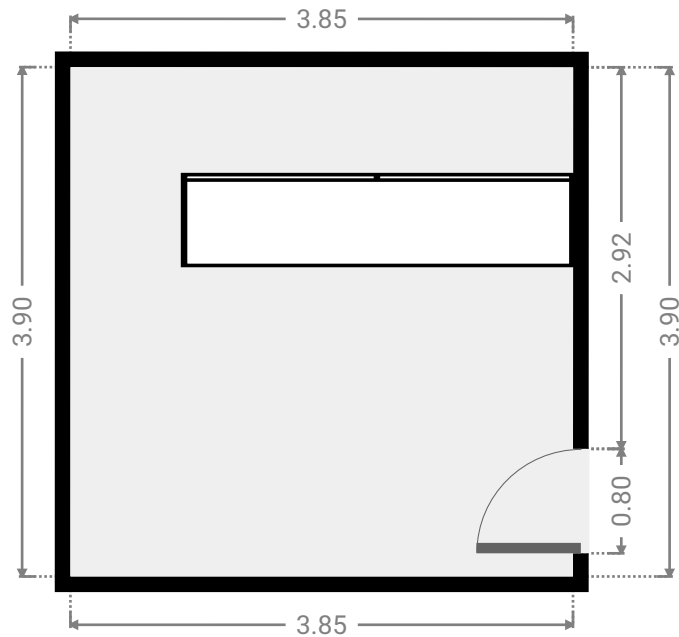
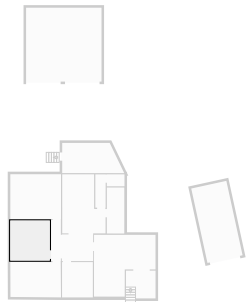
▼ **Bedroom**  
Ground Floor

WIDTH: 4.94 m • LENGTH: 4.37 m  
AREA: 21.59 m<sup>2</sup> • PERIMETER: 18.62 m



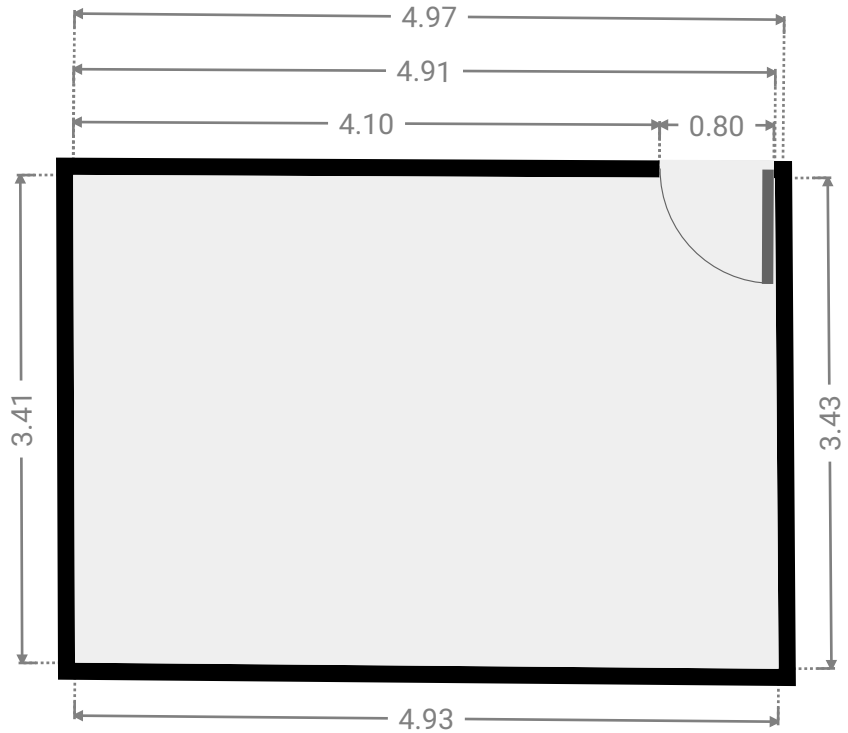
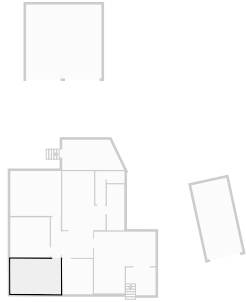
▼ **Bedroom**  
Ground Floor

WIDTH: 3.85 m • LENGTH: 3.90 m  
AREA: 15.02 m<sup>2</sup> • PERIMETER: 15.50 m



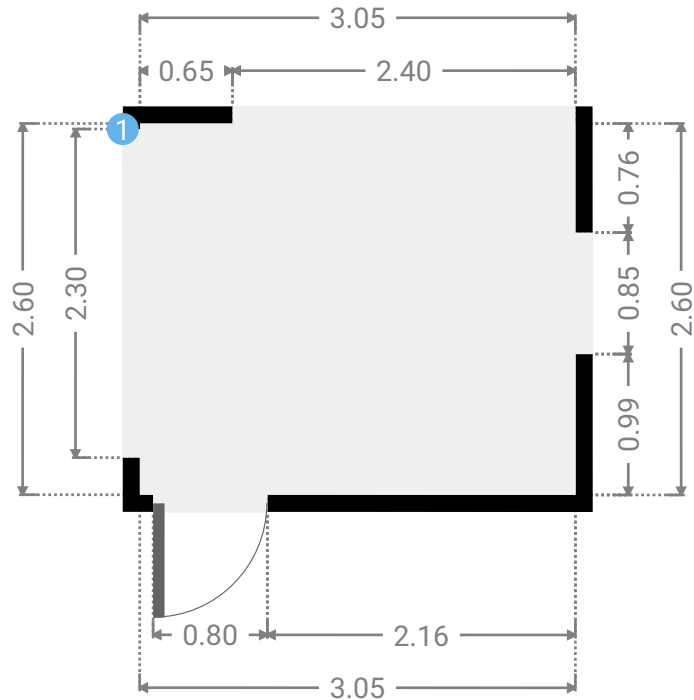
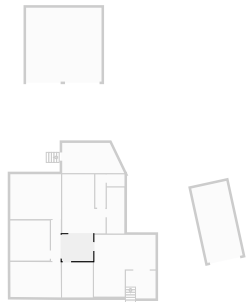
▼ **Bedroom**  
Ground Floor

WIDTH: 4.97 m • LENGTH: 3.43 m  
AREA: 16.84 m<sup>2</sup> • PERIMETER: 16.69 m



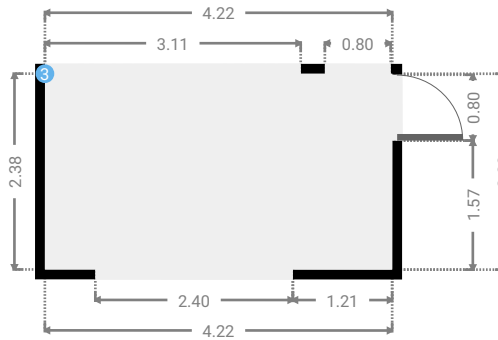
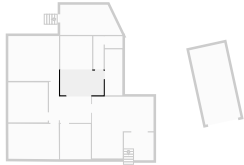
▼ **Dining Room**  
Ground Floor

WIDTH: 3.05 m • LENGTH: 2.60 m  
AREA: 7.93 m<sup>2</sup> • PERIMETER: 11.30 m



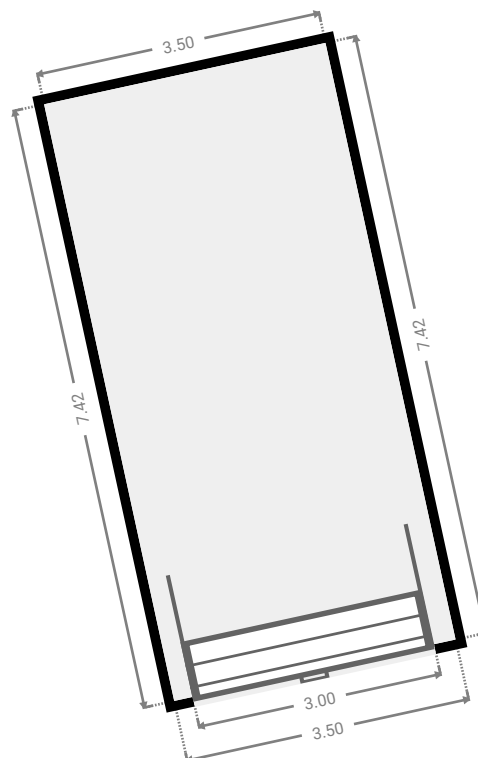
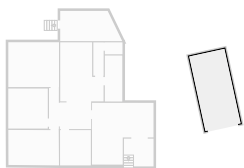
## ▼ Dining Room Ground Floor

WIDTH: 4.22 m • LENGTH: 2.38 m  
AREA: 10.04 m<sup>2</sup> • PERIMETER: 13.20 m



## ▼ Garage Ground Floor

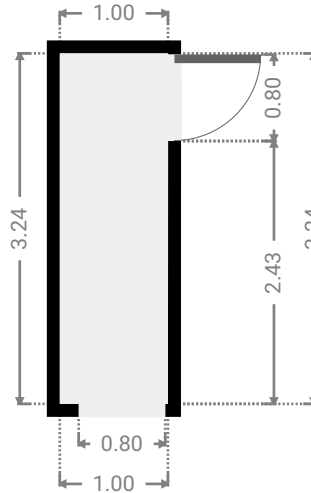
WIDTH: 3.50 m • LENGTH: 7.42 m  
AREA: 25.97 m<sup>2</sup> • PERIMETER: 21.84 m





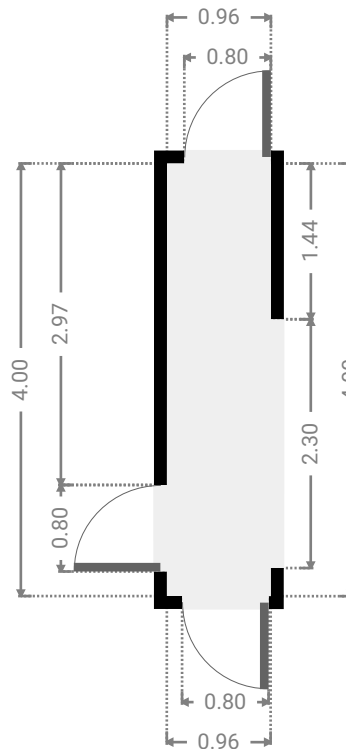
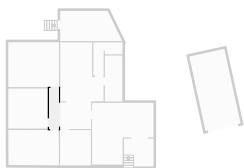
▼ Hall  
Ground Floor

WIDTH: 1.00 m • LENGTH: 3.24 m  
AREA: 3.24 m<sup>2</sup> • PERIMETER: 8.48 m



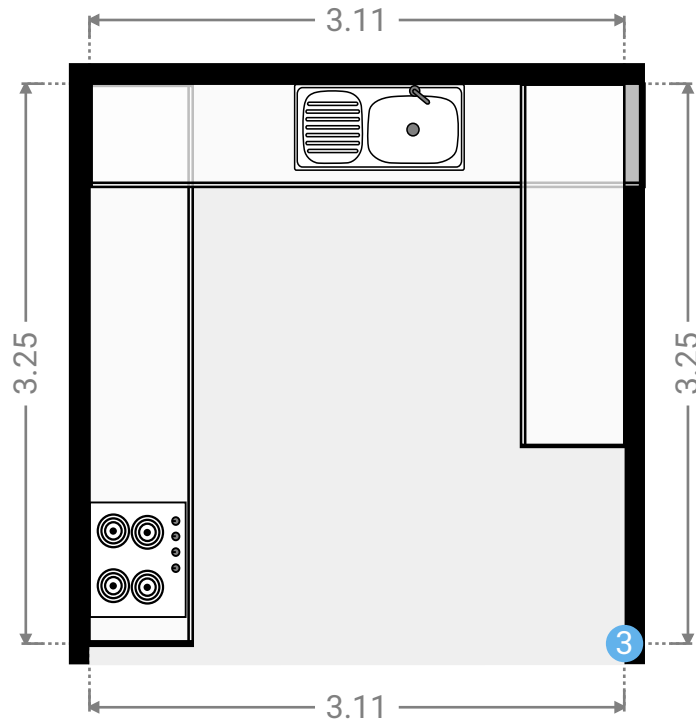
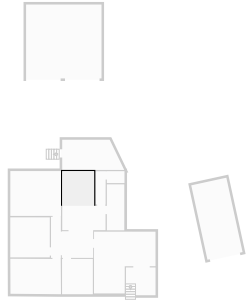
▼ Hall  
Ground Floor

WIDTH: 0.96 m • LENGTH: 4.00 m  
AREA: 3.84 m<sup>2</sup> • PERIMETER: 9.92 m



## ▼ Kitchen Ground Floor

WIDTH: 3.11 m • LENGTH: 3.25 m  
AREA: 10.11 m<sup>2</sup> • PERIMETER: 12.72 m



## ▼ Kitchen/Ground Floor

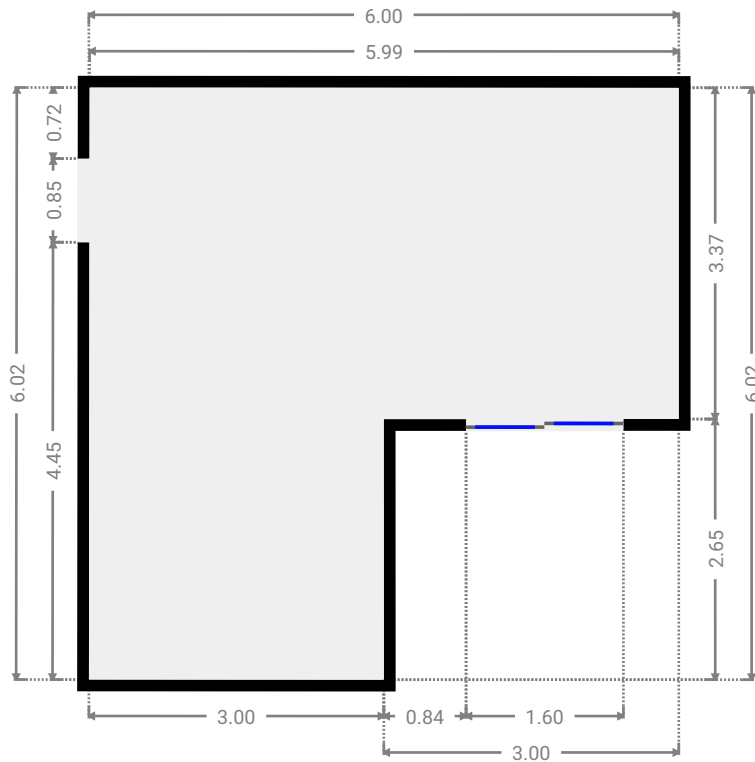
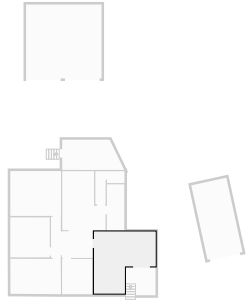
### 3 OPENING

Height  
0.00 m



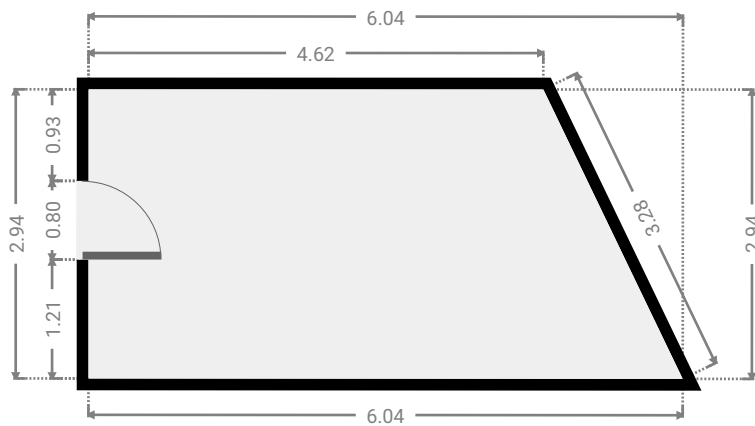
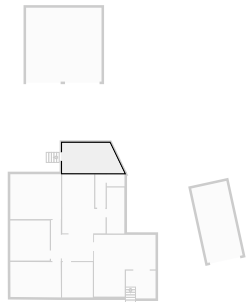
▼ Living Room  
Ground Floor

WIDTH: 6.00 m • LENGTH: 6.02 m  
AREA: 28.14 m<sup>2</sup> • PERIMETER: 24.03 m



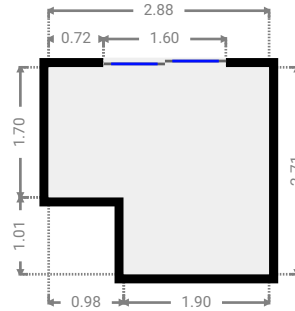
▼ Other  
Ground Floor

WIDTH: 6.04 m • LENGTH: 2.94 m  
AREA: 15.69 m<sup>2</sup> • PERIMETER: 16.88 m



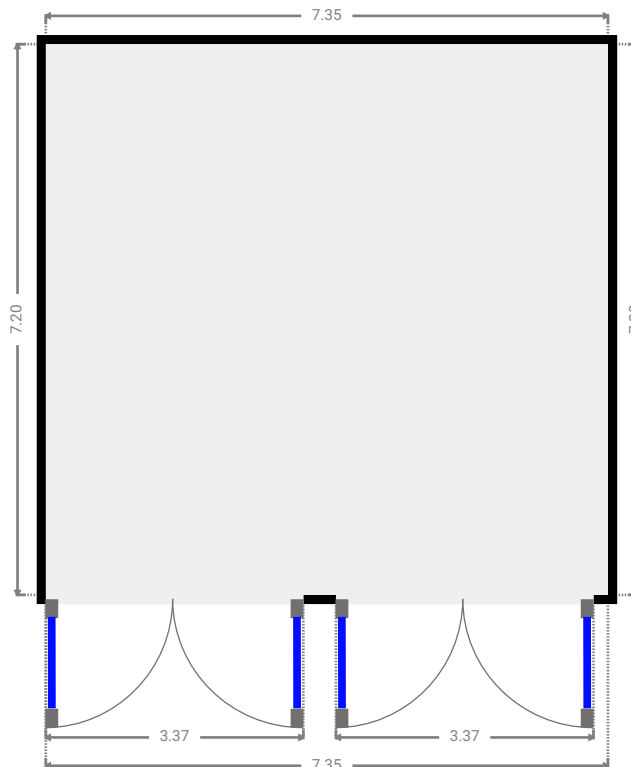
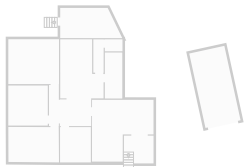
## ▼ Other Ground Floor

WIDTH: 2.88 m • LENGTH: 2.71 m  
AREA: 6.81 m<sup>2</sup> • PERIMETER: 11.18 m



## ▼ Other Ground Floor

WIDTH: 7.35 m • LENGTH: 7.20 m  
AREA: 52.92 m<sup>2</sup> • PERIMETER: 29.10 m



▼ Toilet  
Ground Floor

WIDTH: 1.72 m • LENGTH: 1.16 m  
AREA: 2.00 m<sup>2</sup> • PERIMETER: 5.77 m

