

12 Poole Street

SUBMITTED BY

Ray White Rockhampton Casey
stockers@cqoz.com

CREATED ON

2018-12-06

Floors

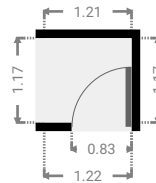
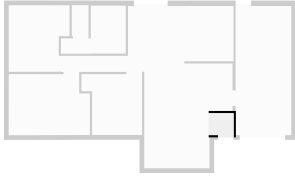
1

▼ Ground Floor



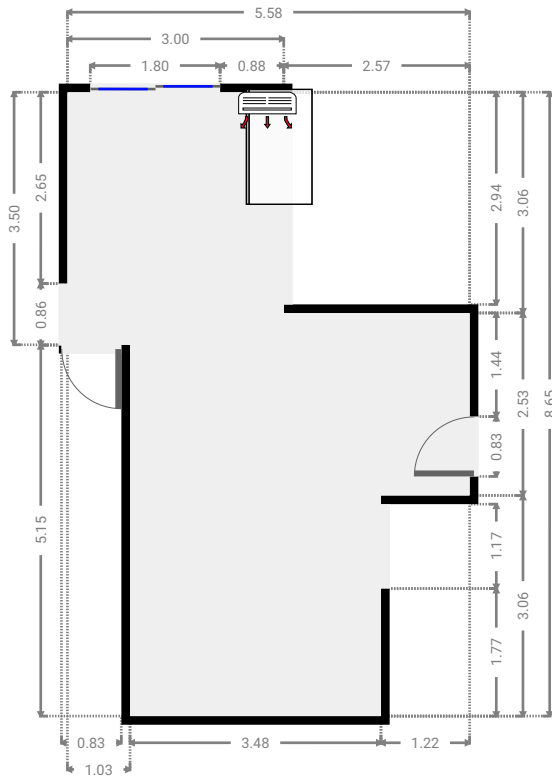
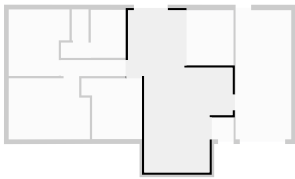
▼ Hall
Ground Floor

WIDTH: 1.21 m • LENGTH: 1.17 m
AREA: 1.42 m² • PERIMETER: 4.76 m



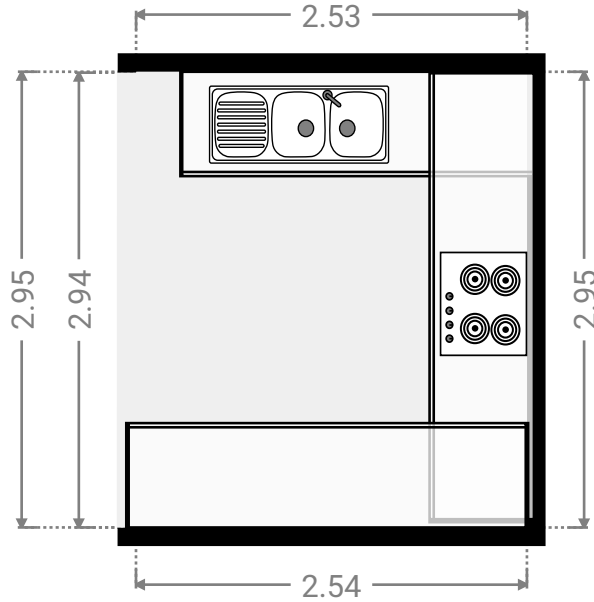
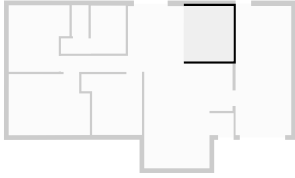
▼ Living Room
Ground Floor

WIDTH: 5.58 m • LENGTH: 8.65 m
AREA: 32.13 m² • PERIMETER: 28.46 m



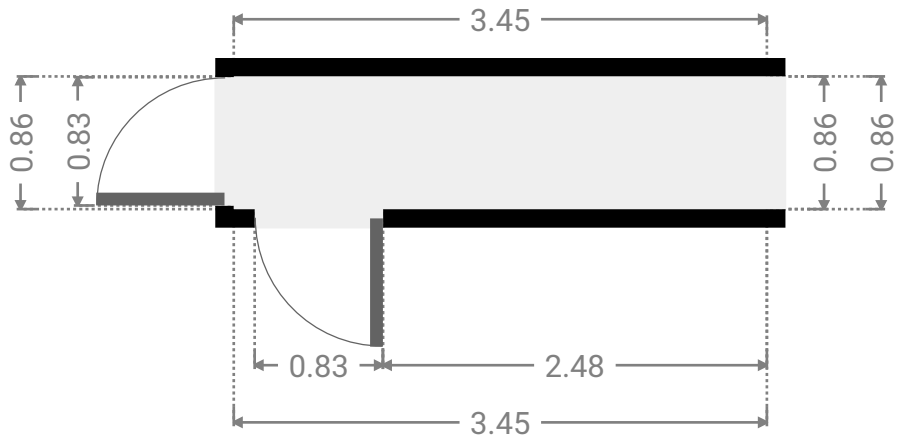
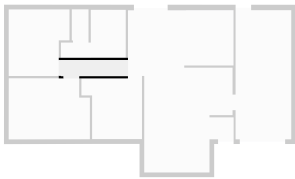
▼ **Kitchen**
Ground Floor

WIDTH: 2.53 m • LENGTH: 2.95 m
AREA: 7.46 m² • PERIMETER: 10.96 m



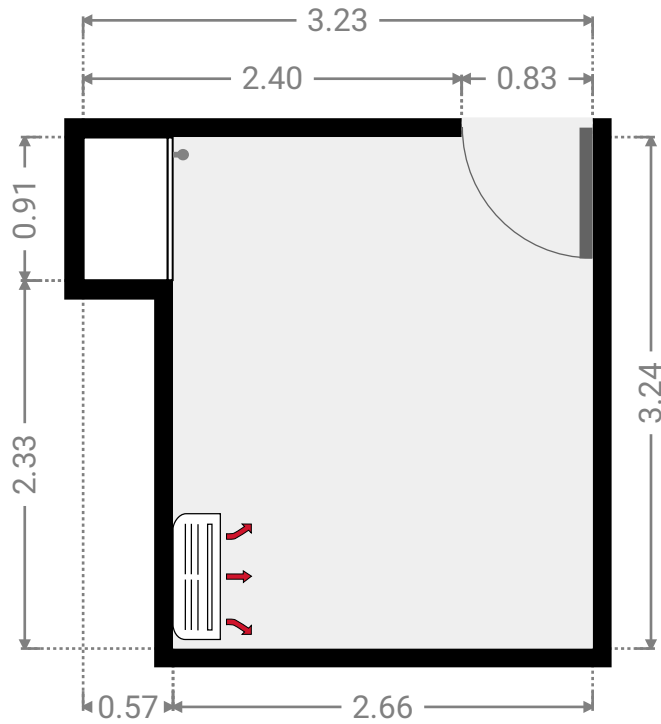
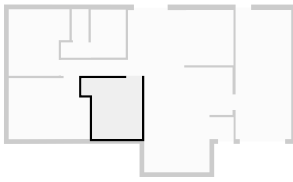
▼ **Hall**
Ground Floor

WIDTH: 3.45 m • LENGTH: 0.86 m
AREA: 2.96 m² • PERIMETER: 8.62 m



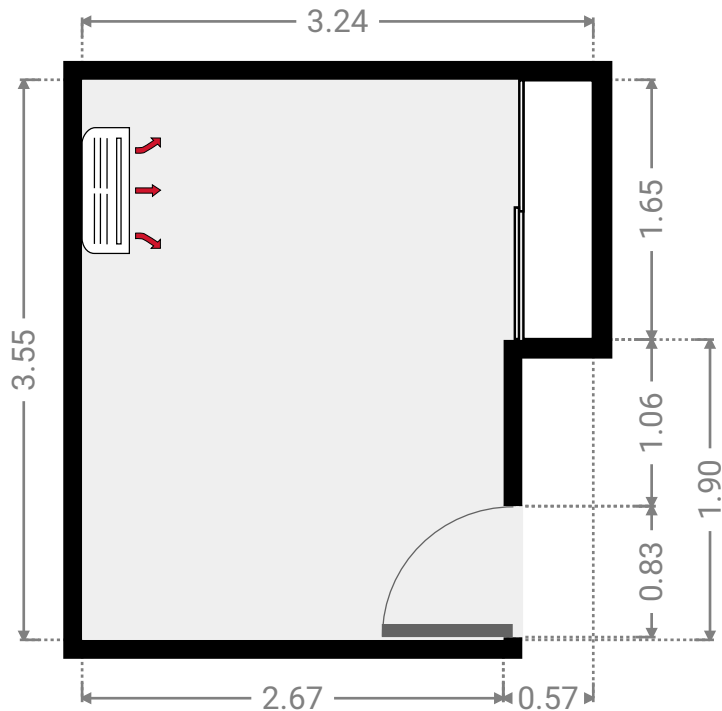
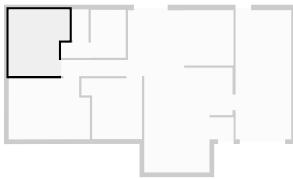
▼ **Bedroom**
Ground Floor

WIDTH: 3.23 m • LENGTH: 3.24 m
AREA: 9.14 m² • PERIMETER: 12.94 m



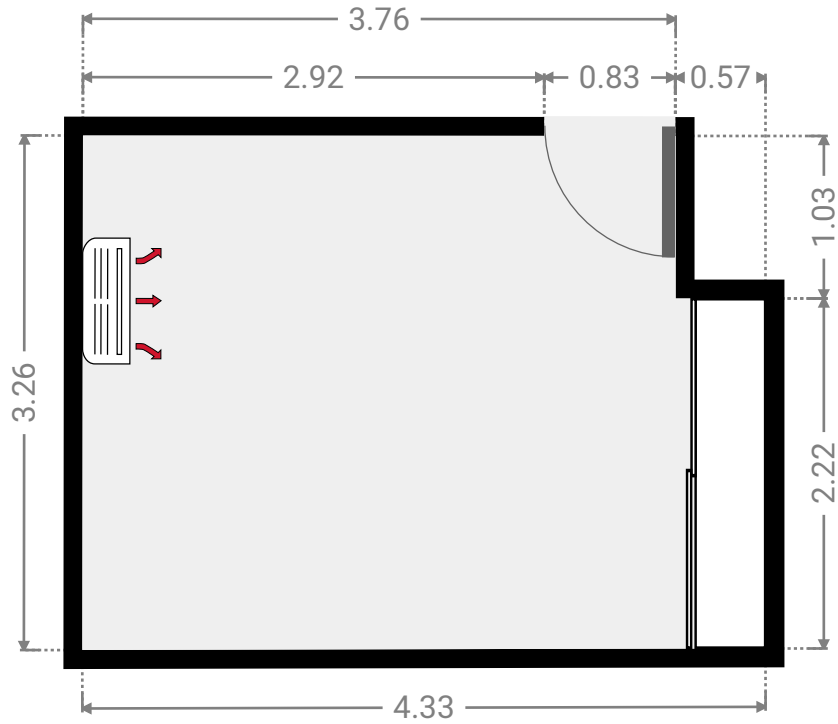
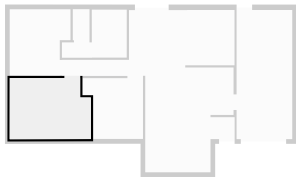
▼ **Bedroom**
Ground Floor

WIDTH: 3.24 m • LENGTH: 3.55 m
AREA: 10.42 m² • PERIMETER: 13.58 m



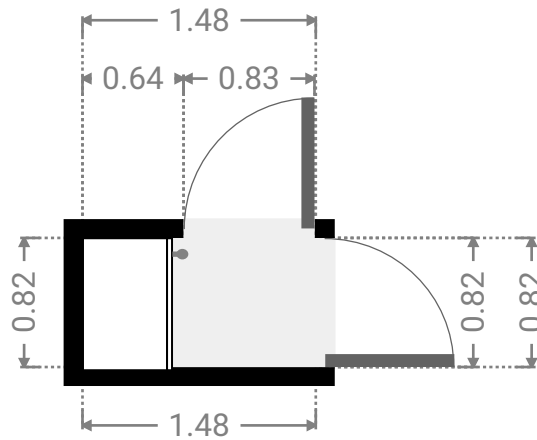
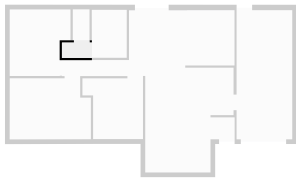
▼ **Master Bedroom**
Ground Floor

WIDTH: 4.33 m • LENGTH: 3.26 m
AREA: 13.51 m² • PERIMETER: 15.17 m



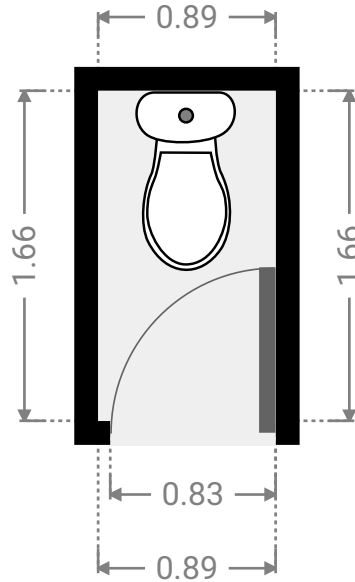
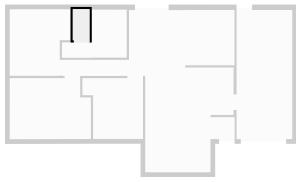
▼ **Hall**
Ground Floor

WIDTH: 1.48 m • LENGTH: 0.82 m
AREA: 1.21 m² • PERIMETER: 4.59 m



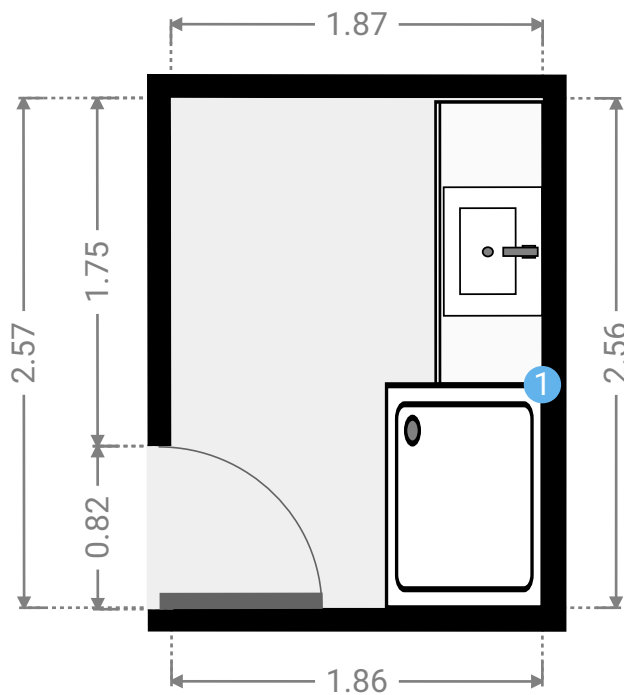
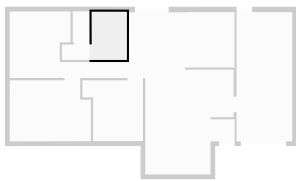
▼ **Toilet**
Ground Floor

WIDTH: 0.89 m • LENGTH: 1.66 m
AREA: 1.48 m² • PERIMETER: 5.09 m



▼ **Bathroom**
Ground Floor

WIDTH: 1.87 m • LENGTH: 2.56 m
AREA: 4.76 m² • PERIMETER: 8.84 m



▼ Bathroom/Ground Floor

1 RECTANGULAR SHOWER

Notes
Sunroom



▼ **Garage**
Ground Floor

WIDTH: 2.97 m • LENGTH: 6.89 m
AREA: 20.47 m² • PERIMETER: 19.72 m

