

12 Oswald Street

SUBMITTED BY

Ray White Rockhampton Casey
stockers@cqoz.com

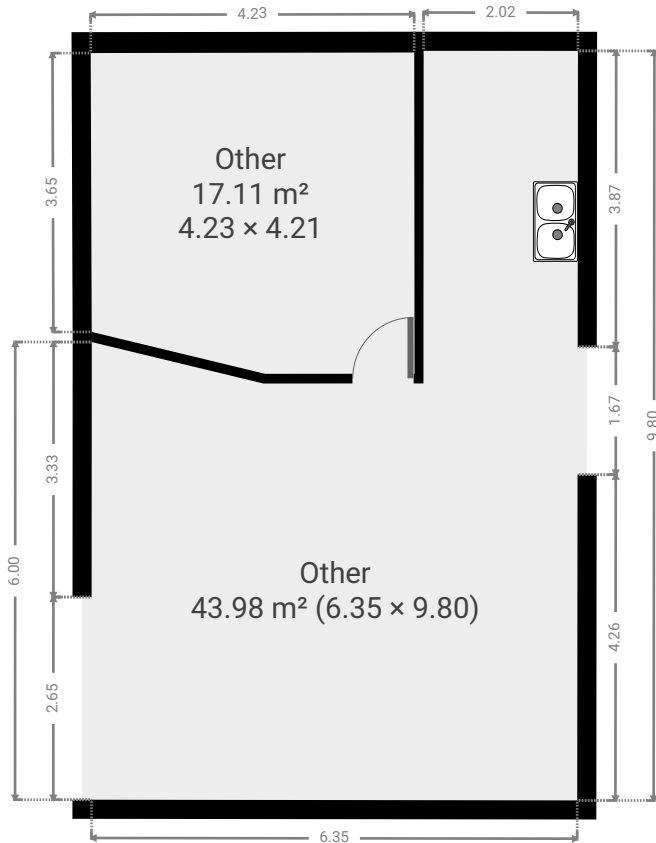
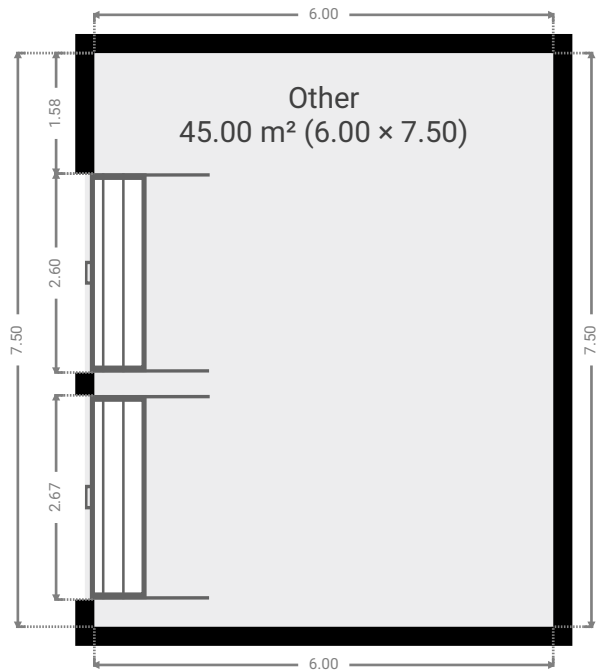
CREATED ON

2020-11-12

Floors

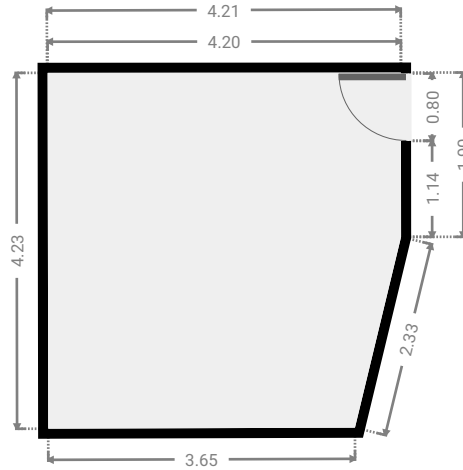
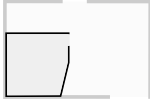
2

▼ Ground Floor



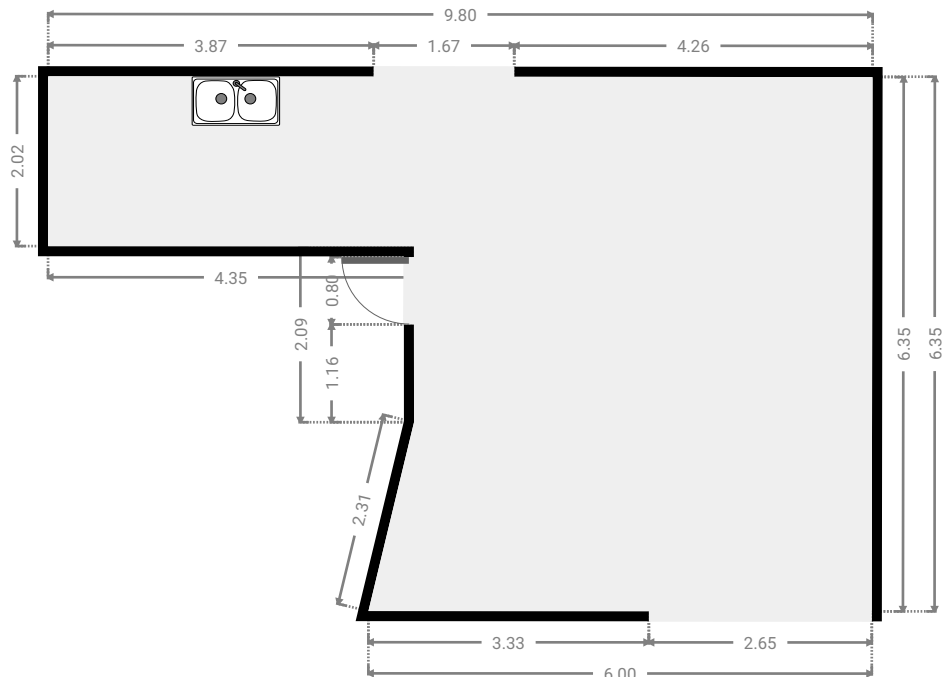
▼ Other
Ground Floor

WIDTH: 4.21 m • LENGTH: 4.23 m
AREA: 17.11 m² • PERIMETER: 16.36 m



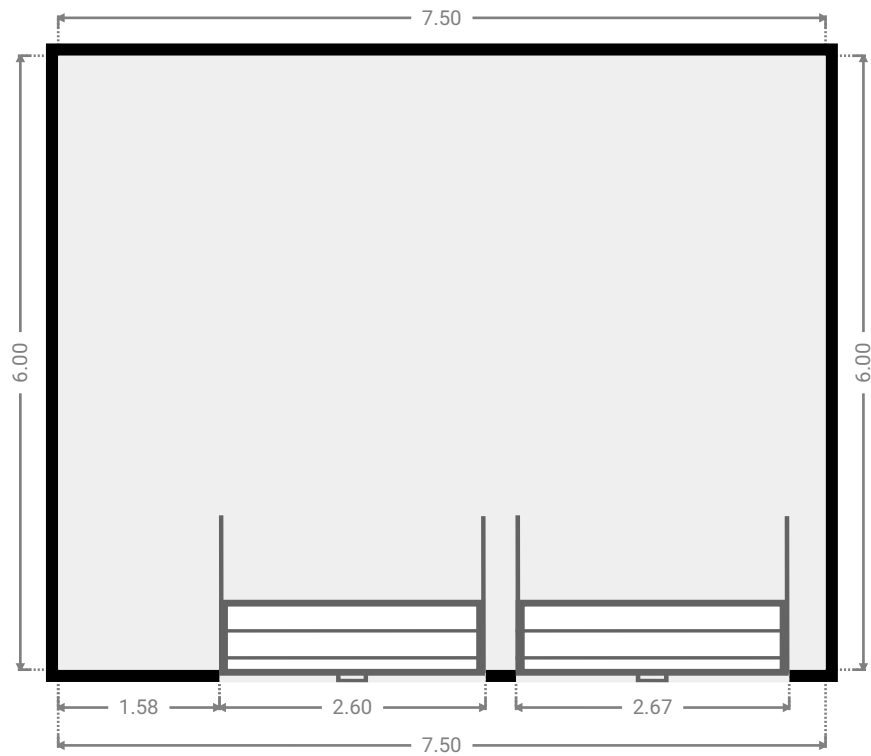
▼ Other
Ground Floor

WIDTH: 9.80 m • LENGTH: 6.35 m
AREA: 43.98 m² • PERIMETER: 32.90 m

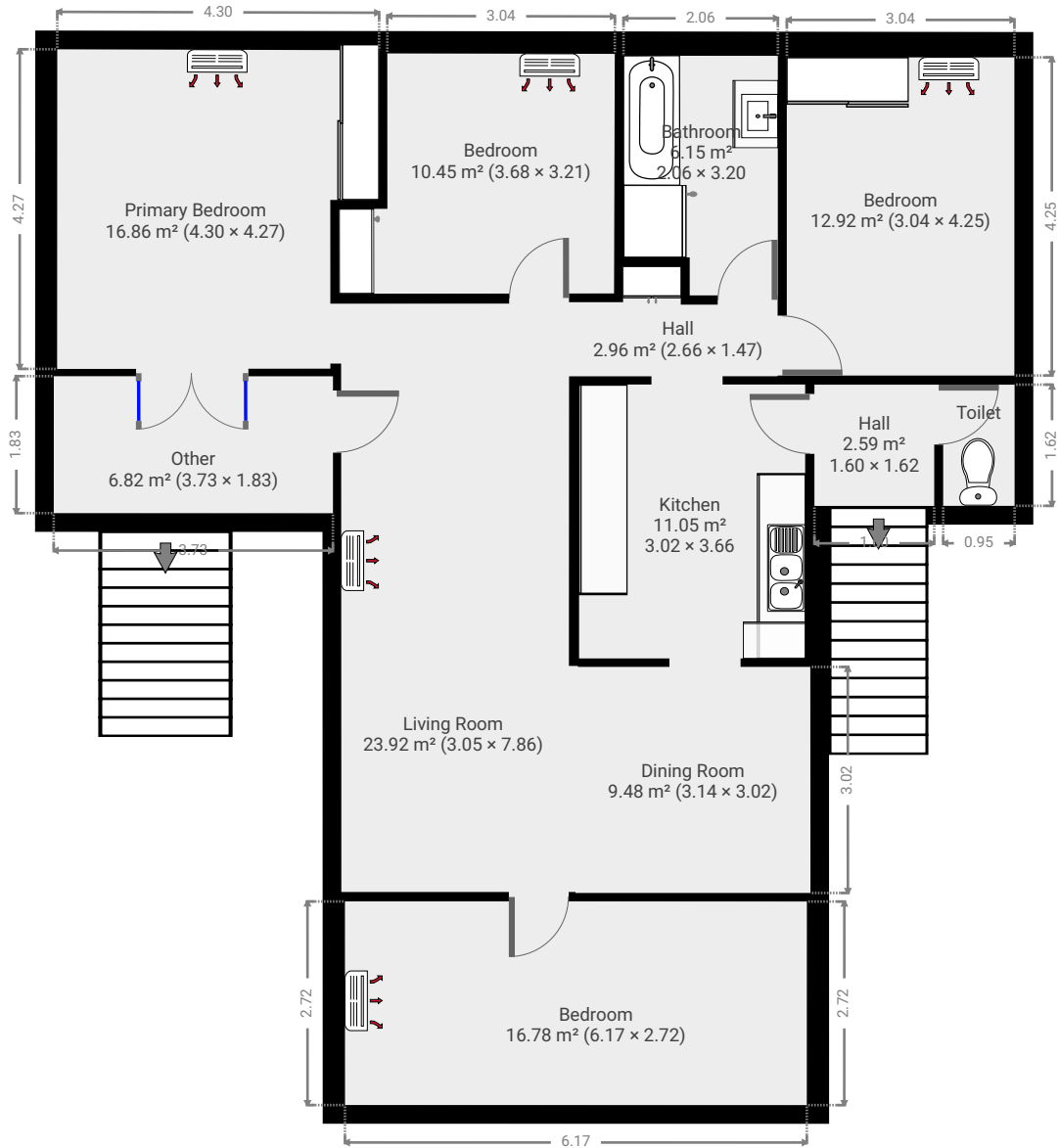


▼ Other
Ground Floor

WIDTH: 7.50 m • LENGTH: 6.00 m
AREA: 45.00 m² • PERIMETER: 27.00 m

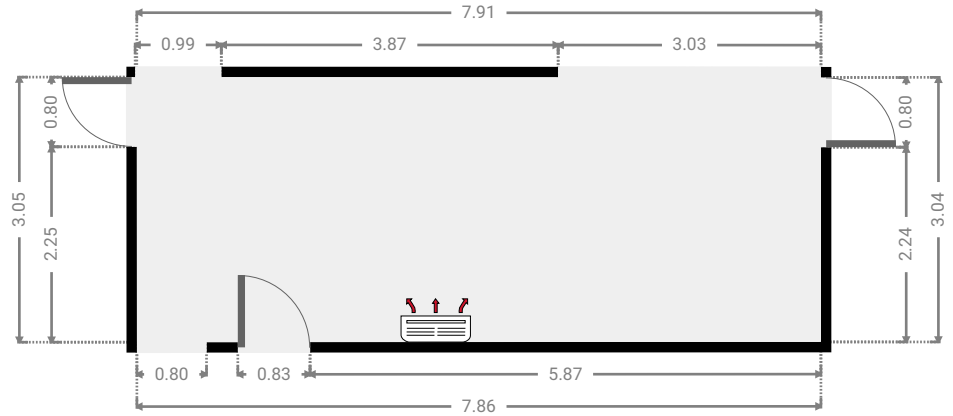
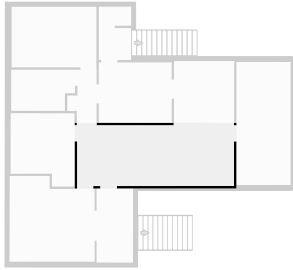


▼ 1st Floor



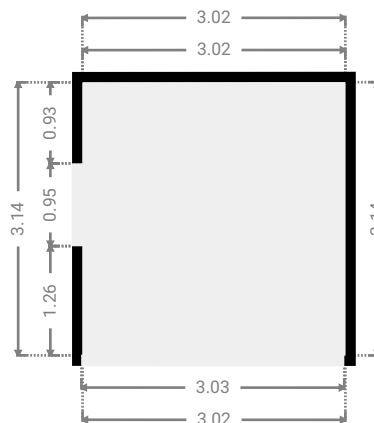
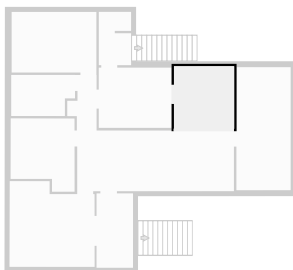
▼ **Living Room**
1st Floor

WIDTH: 7.86 m • LENGTH: 3.05 m
AREA: 23.92 m² • PERIMETER: 21.81 m



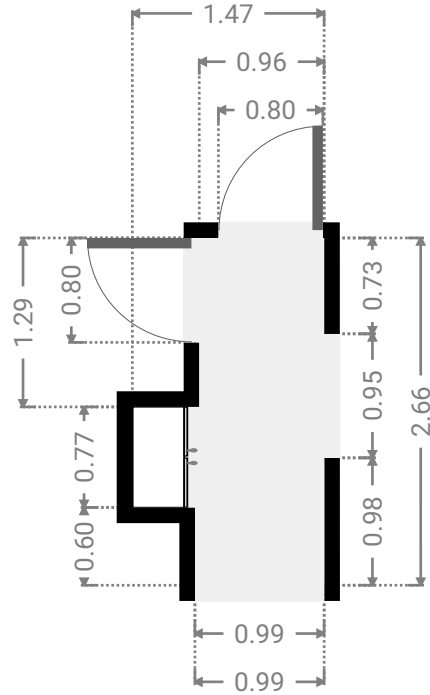
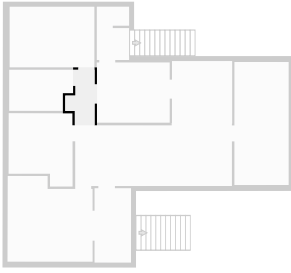
▼ **Dining Room**
1st Floor

WIDTH: 3.02 m • LENGTH: 3.14 m
AREA: 9.48 m² • PERIMETER: 12.32 m



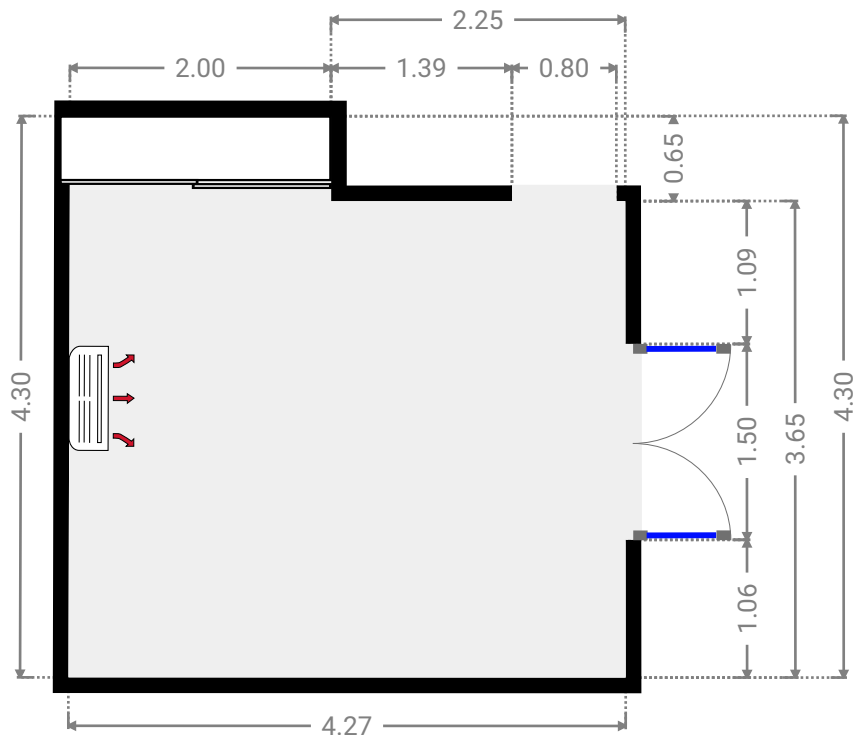
▼ Hall
1st Floor

WIDTH: 1.47 m • LENGTH: 2.66 m
AREA: 2.96 m² • PERIMETER: 8.26 m



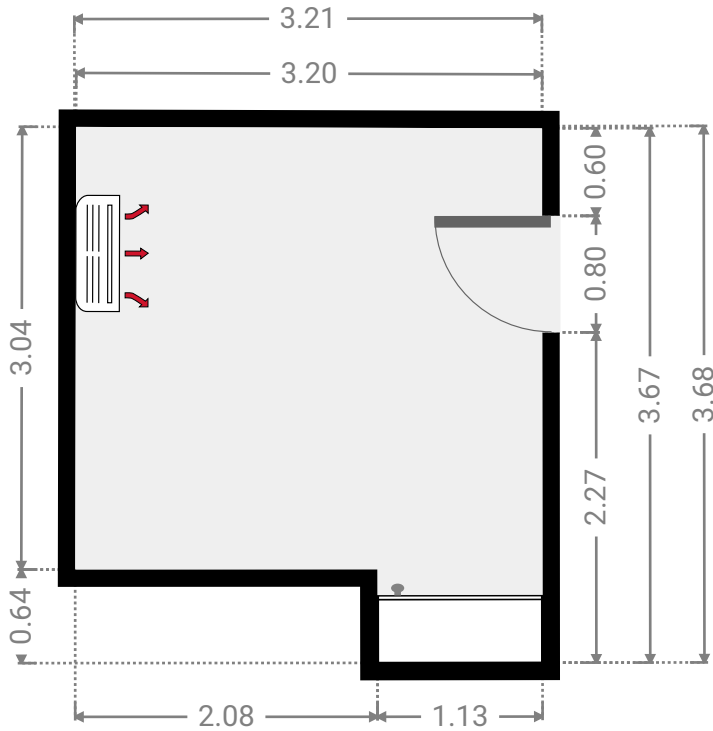
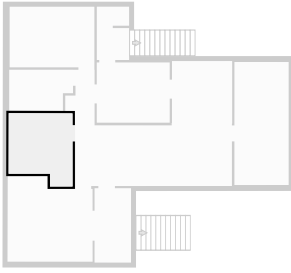
▼ Primary Bedroom
1st Floor

WIDTH: 4.27 m • LENGTH: 4.30 m
AREA: 16.86 m² • PERIMETER: 17.12 m



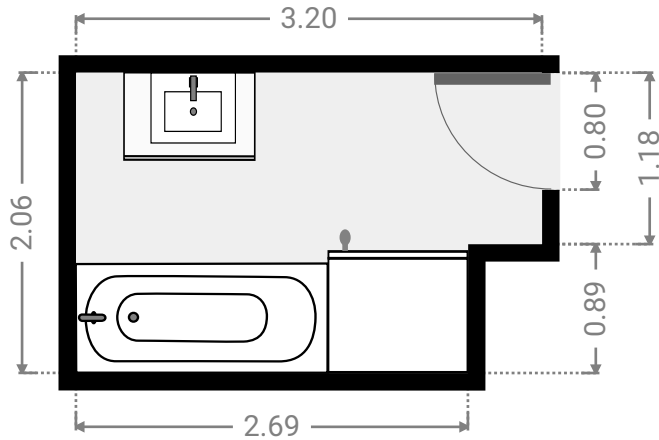
▼ **Bedroom**
1st Floor

WIDTH: 3.21 m • LENGTH: 3.68 m
AREA: 10.45 m² • PERIMETER: 13.76 m



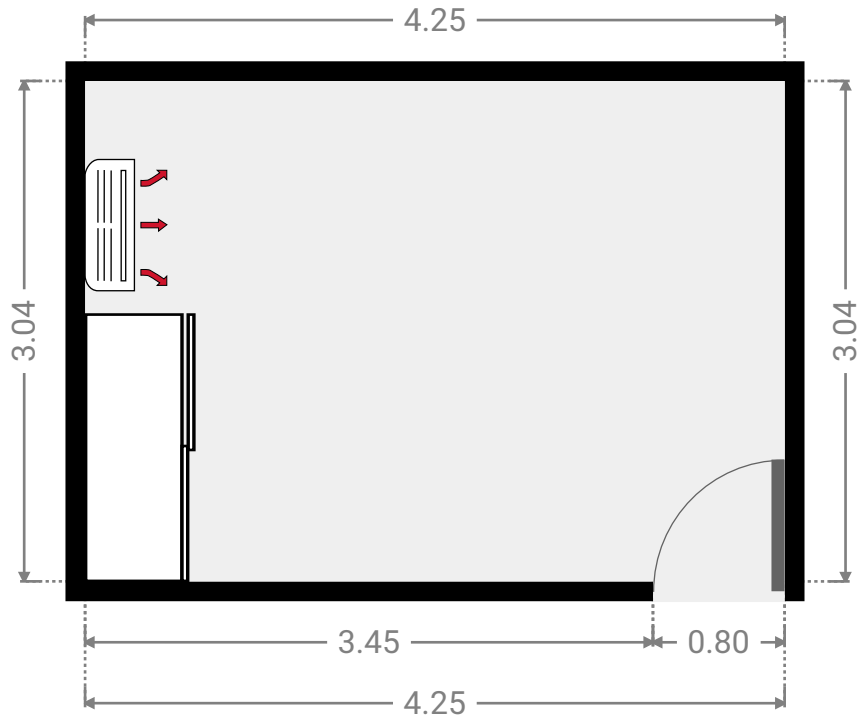
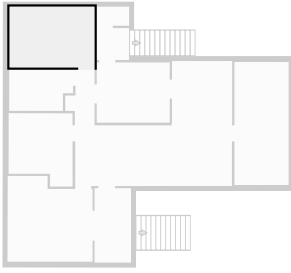
▼ **Bathroom**
1st Floor

WIDTH: 3.20 m • LENGTH: 2.06 m
AREA: 6.15 m² • PERIMETER: 10.53 m



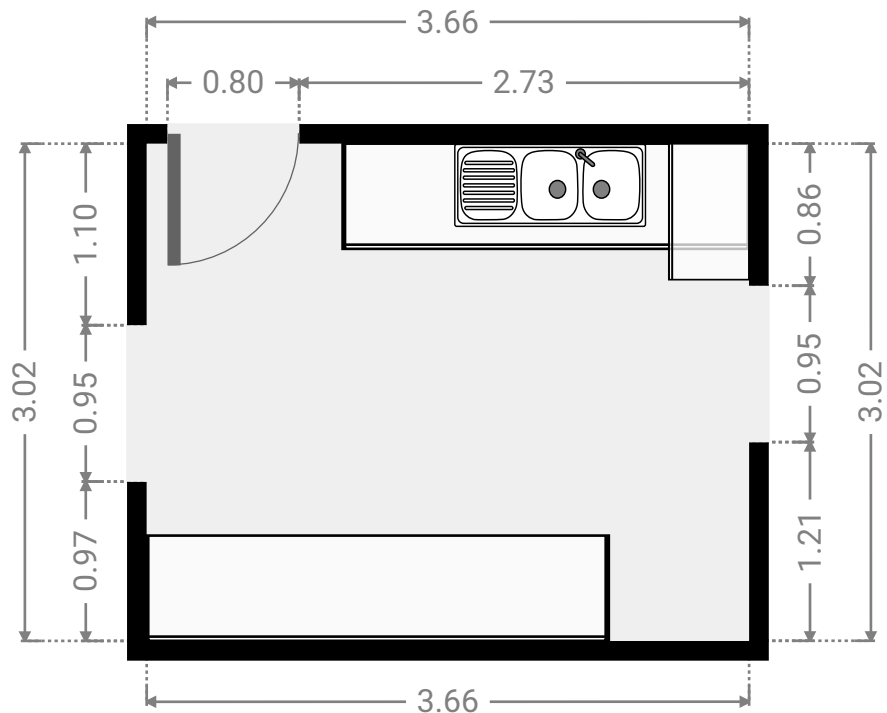
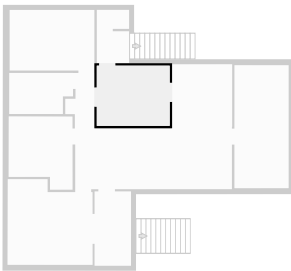
▼ **Bedroom**
1st Floor

WIDTH: 4.25 m • LENGTH: 3.04 m
AREA: 12.92 m² • PERIMETER: 14.58 m



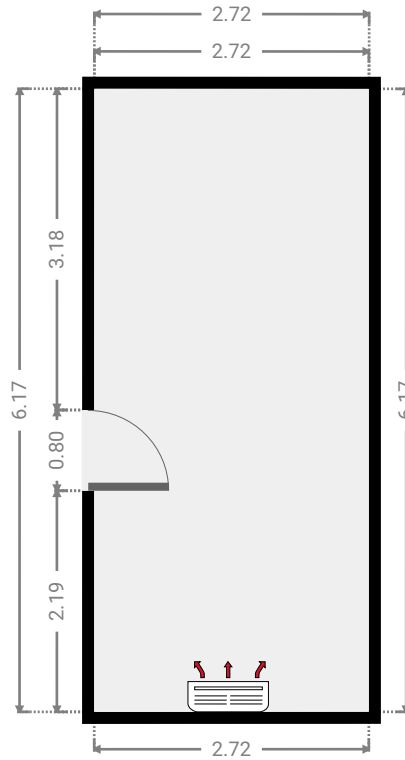
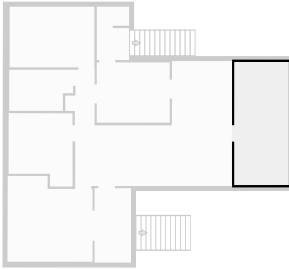
▼ **Kitchen**
1st Floor

WIDTH: 3.66 m • LENGTH: 3.02 m
AREA: 11.05 m² • PERIMETER: 13.36 m



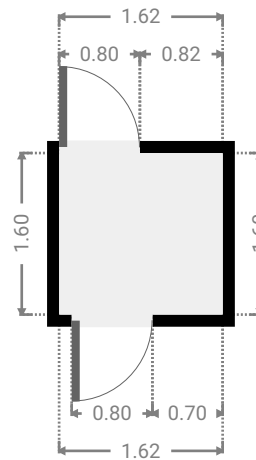
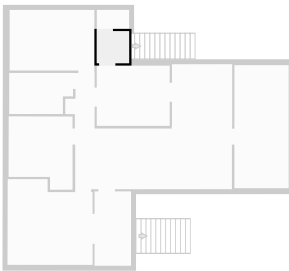
▼ **Bedroom**
1st Floor

WIDTH: 2.72 m • LENGTH: 6.17 m
AREA: 16.78 m² • PERIMETER: 17.78 m



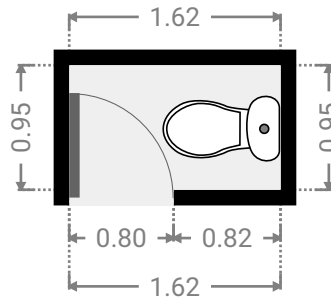
▼ **Hall**
1st Floor

WIDTH: 1.62 m • LENGTH: 1.60 m
AREA: 2.59 m² • PERIMETER: 6.44 m



▼ Toilet
1st Floor

WIDTH: 1.62 m • LENGTH: 0.95 m
AREA: 1.54 m² • PERIMETER: 5.15 m



▼ Other
1st Floor

WIDTH: 1.83 m • LENGTH: 3.73 m
AREA: 6.82 m² • PERIMETER: 11.12 m

