

12 Foxglove Av

SUBMITTED BY

Ray White Rockhampton Casey
stockers@cqoz.com

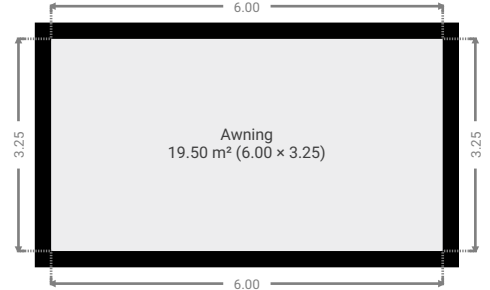
CREATED ON

2022-08-24

Floors

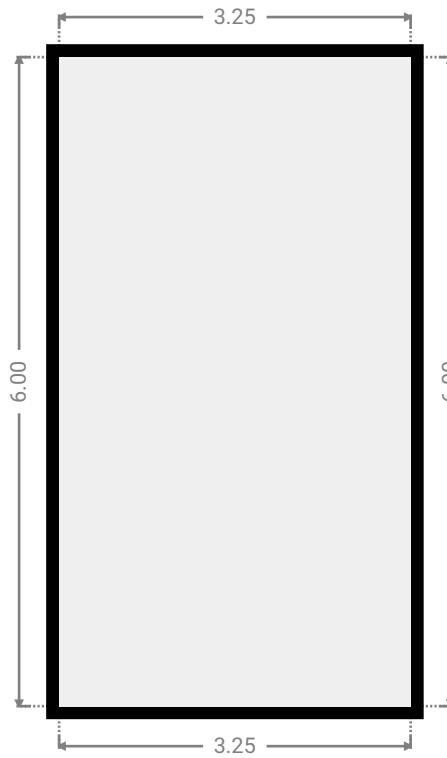
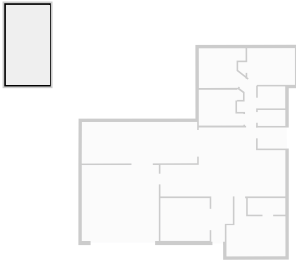
1

▼ Ground Floor



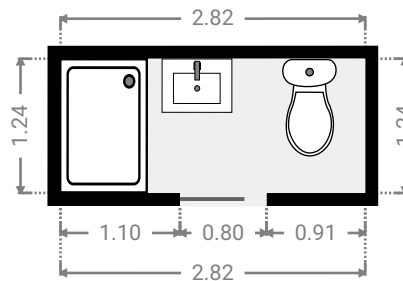
▼ Awning Ground Floor

WIDTH: 3.25 m • LENGTH: 6.00 m
AREA: 19.50 m² • PERIMETER: 18.50 m



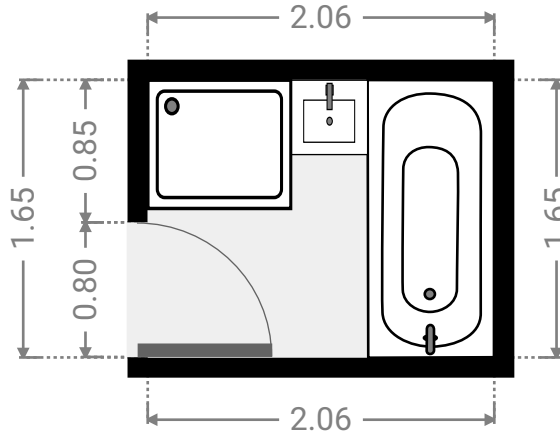
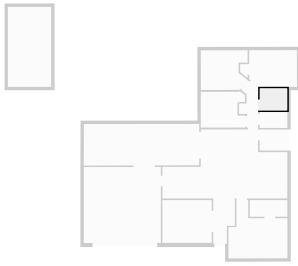
▼ Bathroom Ground Floor

WIDTH: 2.82 m • LENGTH: 1.24 m
AREA: 3.50 m² • PERIMETER: 8.12 m



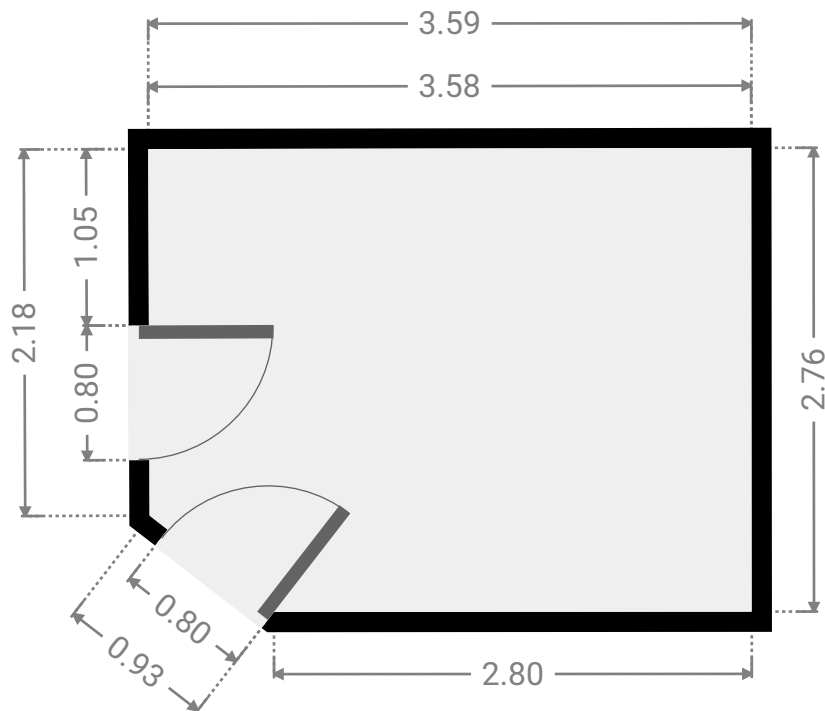
▼ **Bathroom**
Ground Floor

WIDTH: 2.06 m • LENGTH: 1.65 m
AREA: 3.40 m² • PERIMETER: 7.42 m



▼ **Bedroom**
Ground Floor

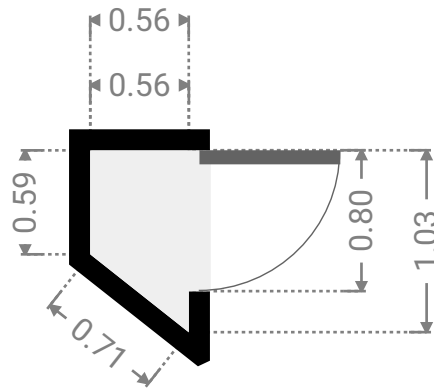
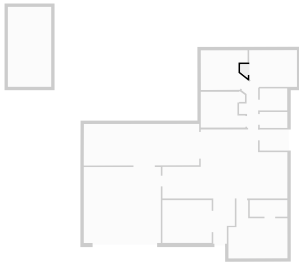
WIDTH: 3.59 m • LENGTH: 2.76 m
AREA: 9.65 m² • PERIMETER: 12.29 m



FLOORS: 1

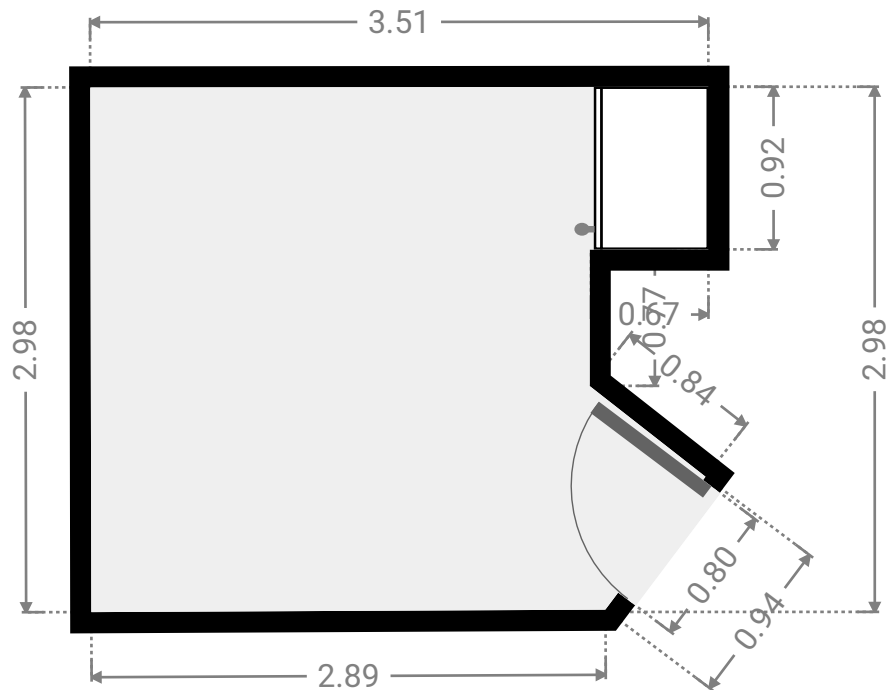
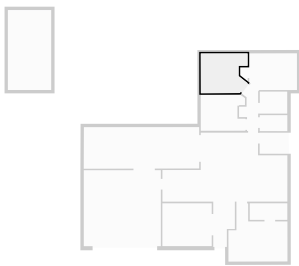
▼ Closet
Ground Floor

WIDTH: 0.56 m • LENGTH: 1.03 m
AREA: 0.45 m² • PERIMETER: 2.90 m



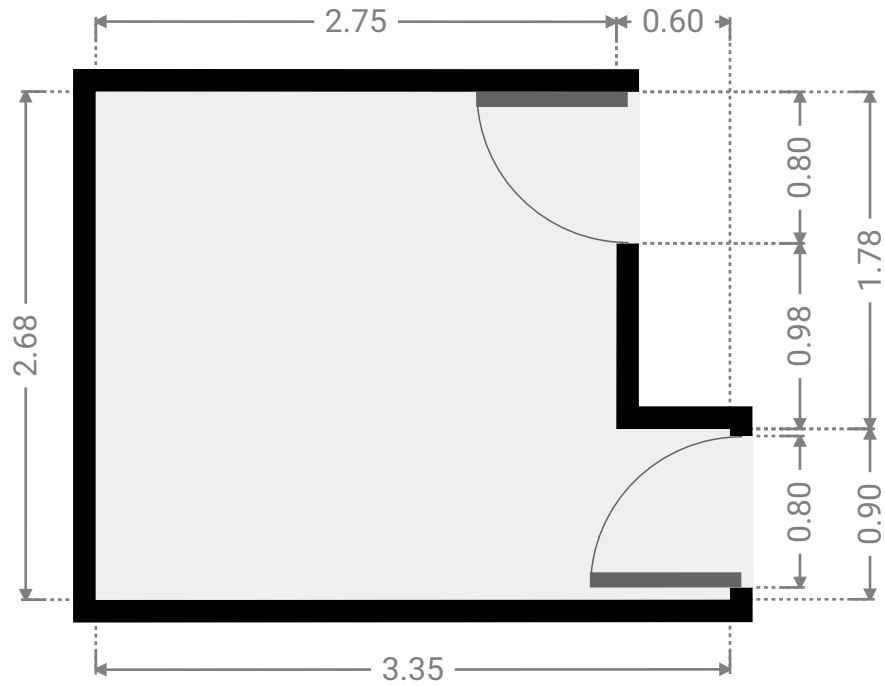
▼ Bedroom
Ground Floor

WIDTH: 3.51 m • LENGTH: 2.98 m
AREA: 9.50 m² • PERIMETER: 13.56 m



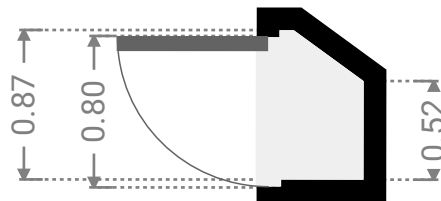
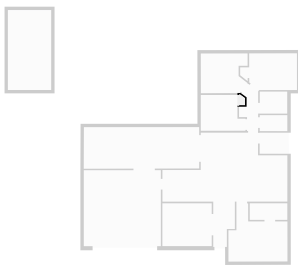
▼ **Bedroom**
Ground Floor

WIDTH: 3.35 m • LENGTH: 2.68 m
AREA: 7.92 m² • PERIMETER: 12.07 m



▼ **Closet**
Ground Floor

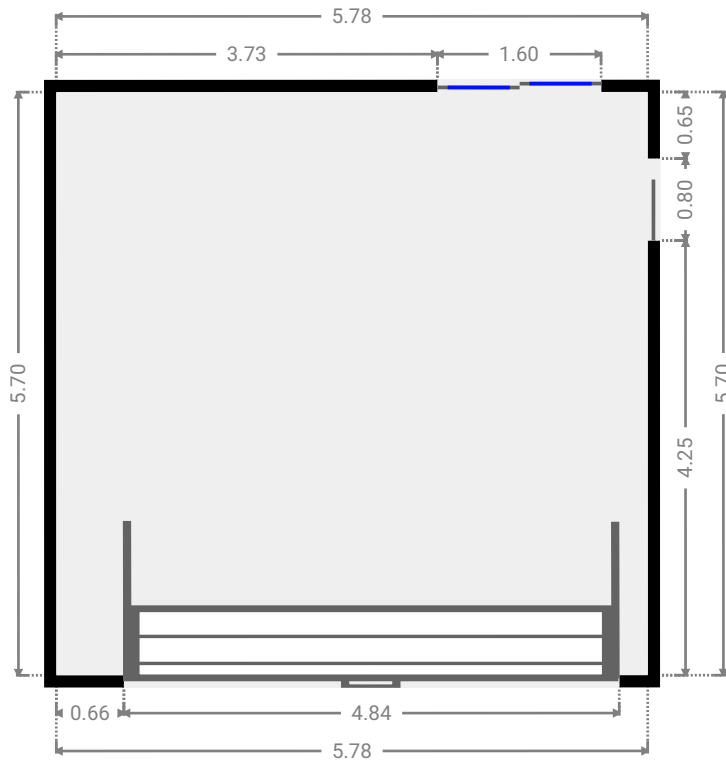
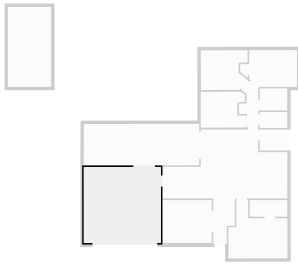
WIDTH: 0.45 m • LENGTH: 0.79 m
AREA: 0.30 m² • PERIMETER: 2.29 m



FLOORS: 1

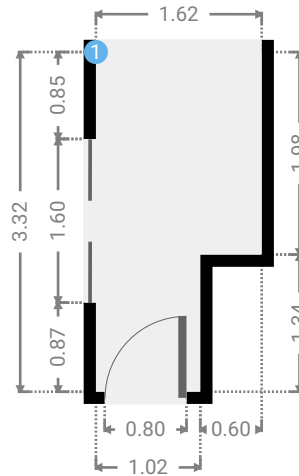
▼ Garage
Ground Floor

WIDTH: 5.78 m • LENGTH: 5.70 m
AREA: 32.94 m² • PERIMETER: 22.96 m



▼ Hall
Ground Floor

WIDTH: 1.62 m • LENGTH: 3.32 m
AREA: 4.57 m² • PERIMETER: 9.88 m



▼ Hall/Ground Floor

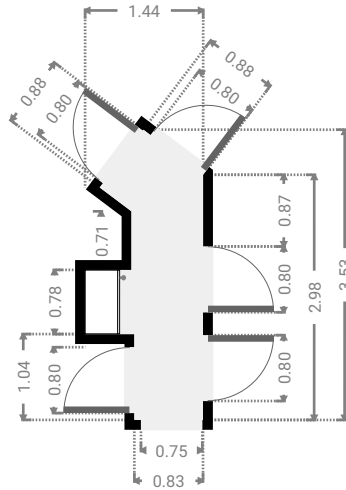
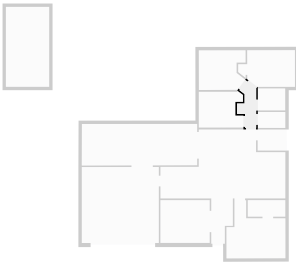
1 OPENING

Height
0.00 m



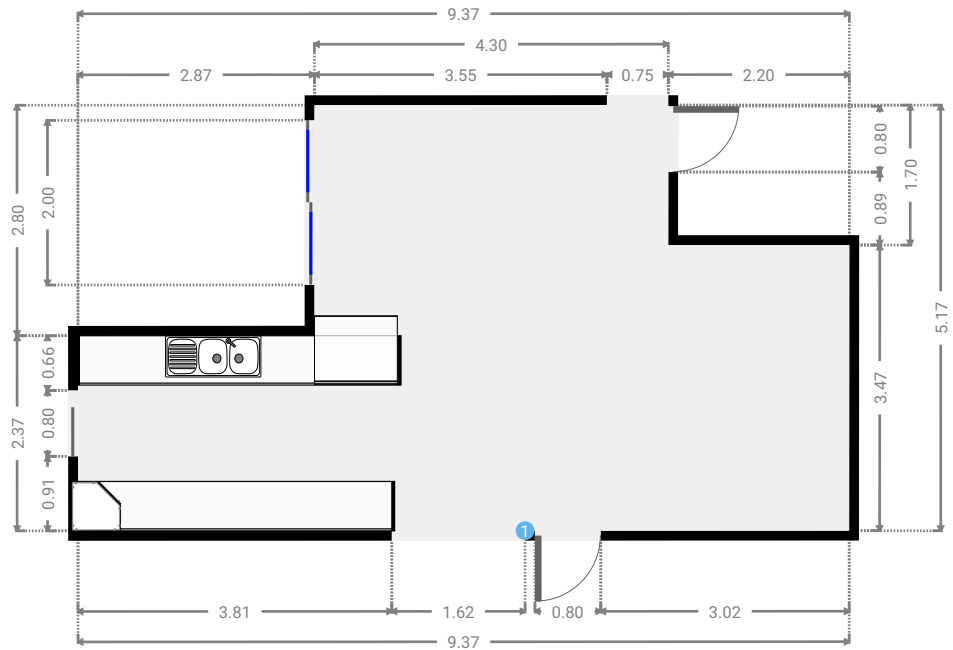
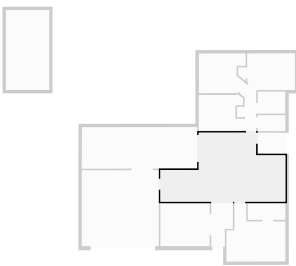
▼ Hall
Ground Floor

WIDTH: 1.44 m • LENGTH: 3.53 m
AREA: 3.41 m² • PERIMETER: 9.78 m



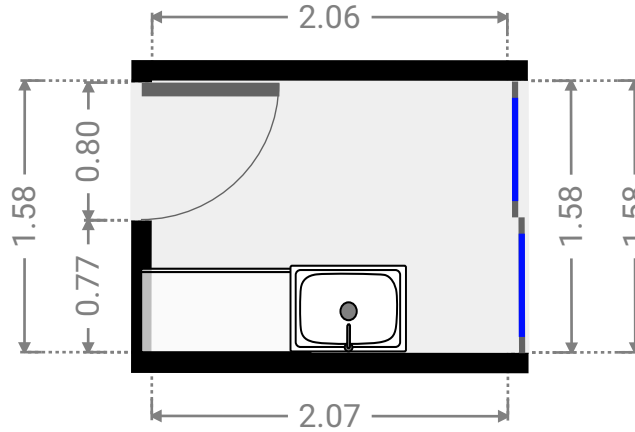
▼ Kitchen
Ground Floor

WIDTH: 9.37 m • LENGTH: 5.17 m
AREA: 36.67 m² • PERIMETER: 29.08 m



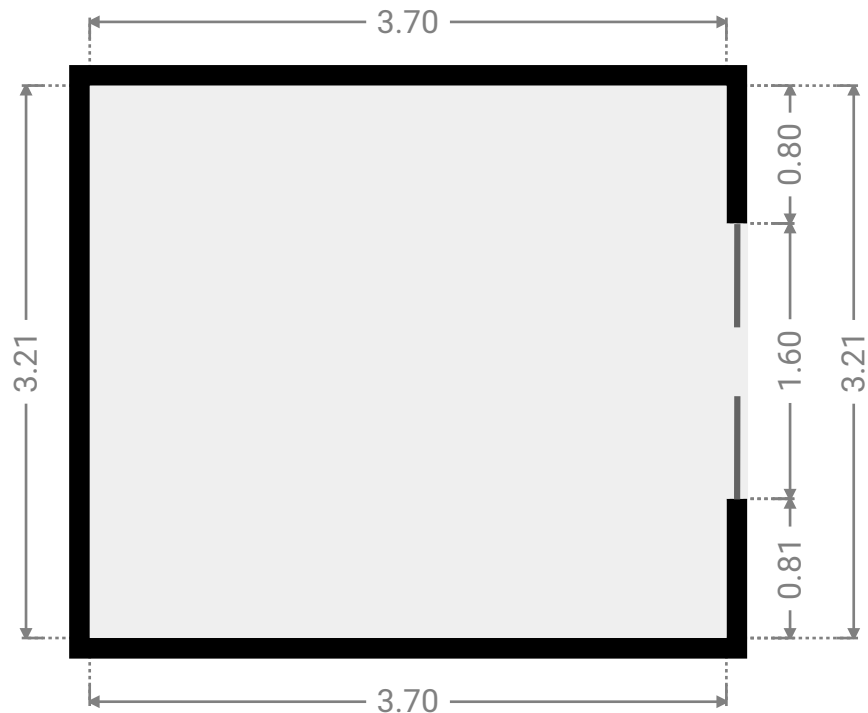
▼ Laundry Room
Ground Floor

WIDTH: 2.07 m • LENGTH: 1.58 m
AREA: 3.26 m² • PERIMETER: 7.29 m



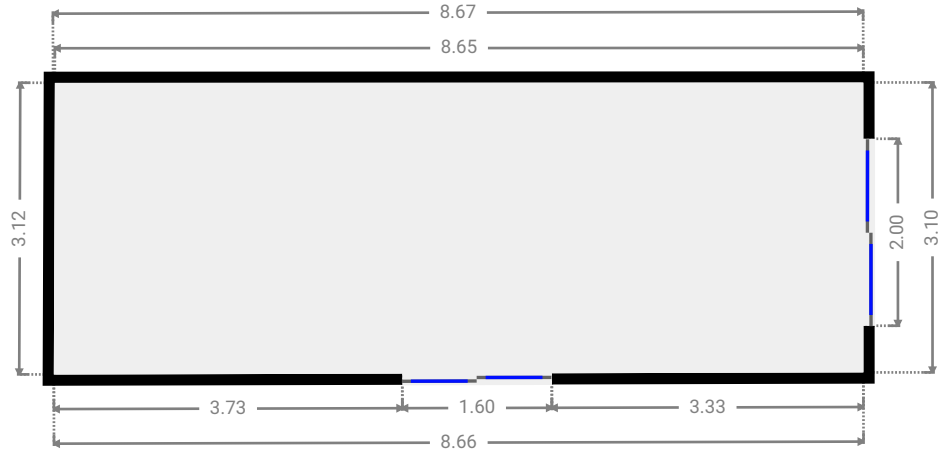
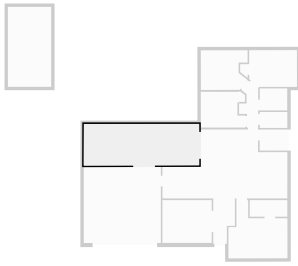
▼ Living Room
Ground Floor

WIDTH: 3.70 m • LENGTH: 3.21 m
AREA: 11.88 m² • PERIMETER: 13.82 m



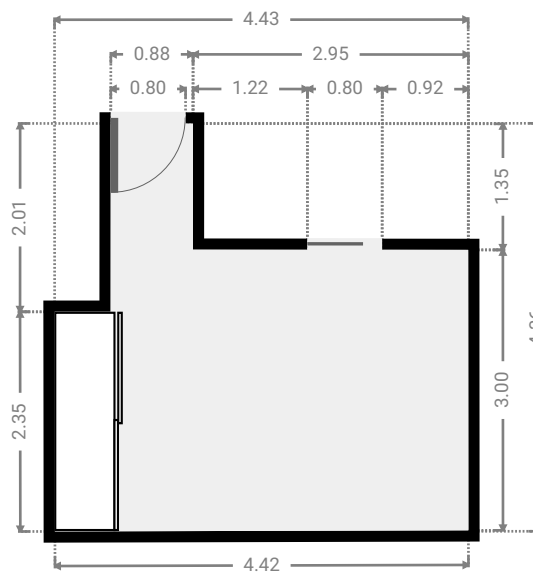
▼ Other
Ground Floor

WIDTH: 8.67 m • LENGTH: 3.12 m
AREA: 26.92 m² • PERIMETER: 23.53 m



▼ Primary Bedroom
Ground Floor

WIDTH: 4.43 m • LENGTH: 4.36 m
AREA: 14.10 m² • PERIMETER: 17.56 m



▼ Toilet
Ground Floor

WIDTH: 2.07 m • LENGTH: 1.20 m
AREA: 2.48 m² • PERIMETER: 6.54 m

