

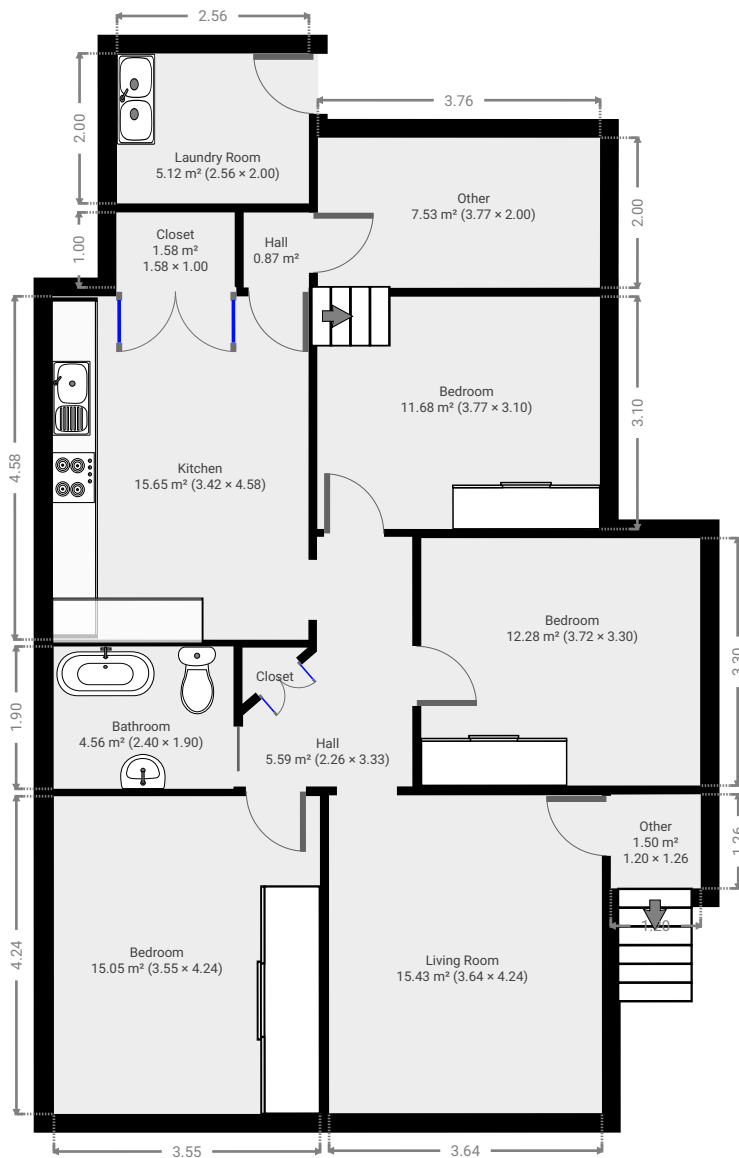
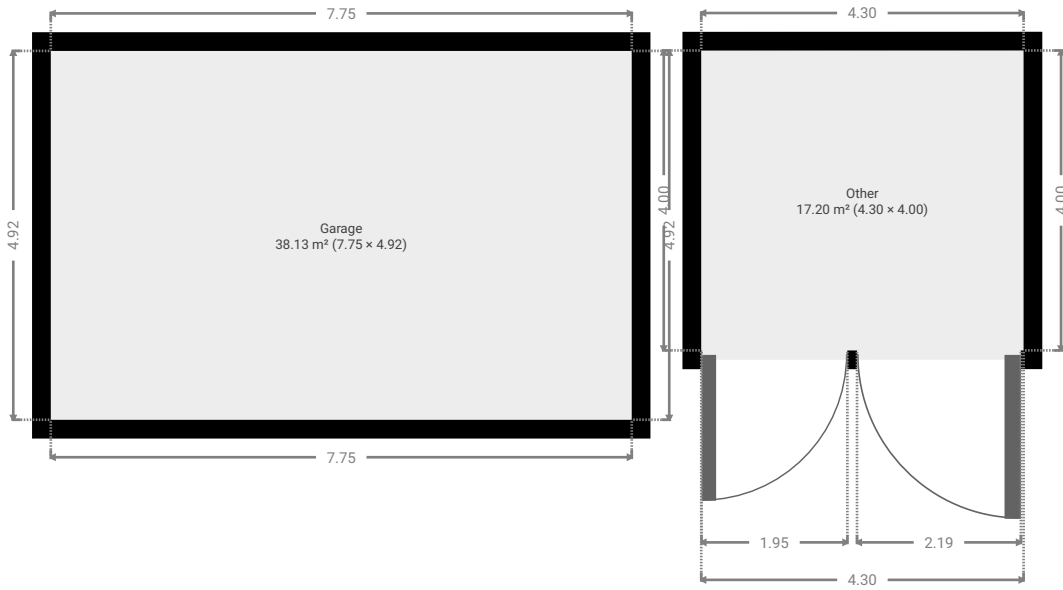
12 Cowap Street

SUBMITTED BY
Ray White Rockhampton Casey
stockers@cqoz.com

CREATED ON
2022-04-19

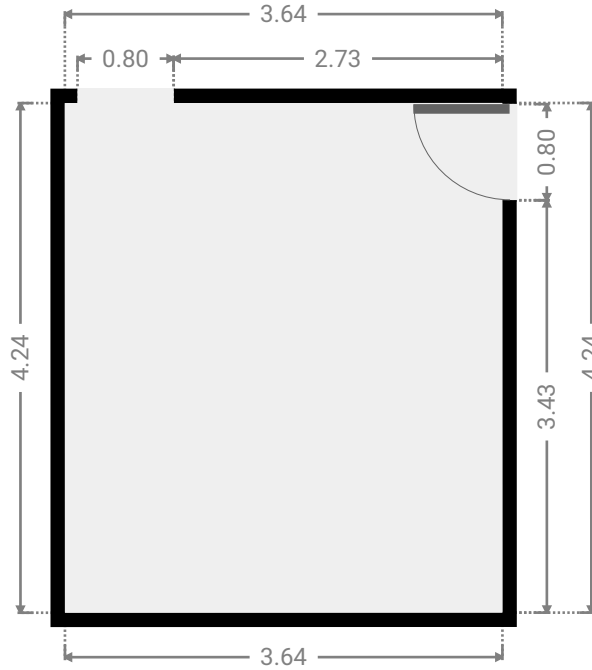
Floors
1

▼ Ground Floor



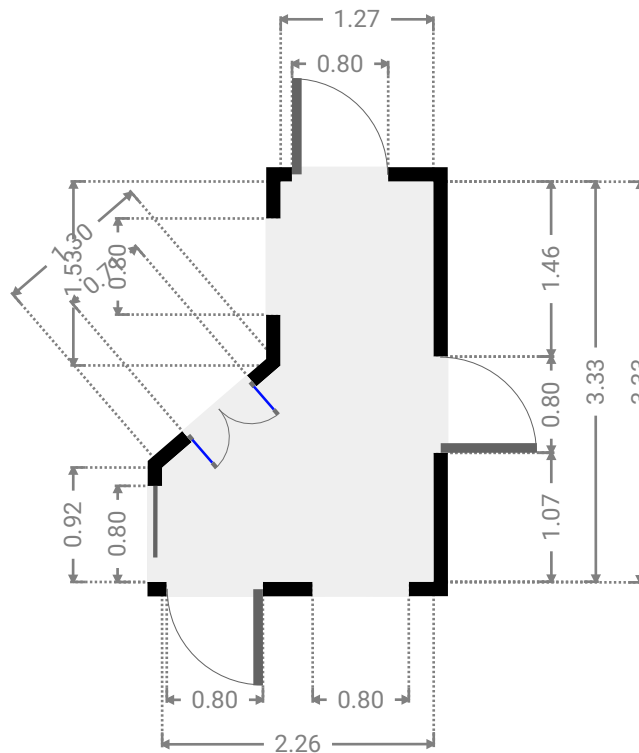
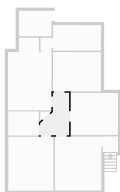
▼ **Living Room**
Ground Floor

WIDTH: 3.64 m • LENGTH: 4.24 m
AREA: 15.43 m² • PERIMETER: 15.76 m



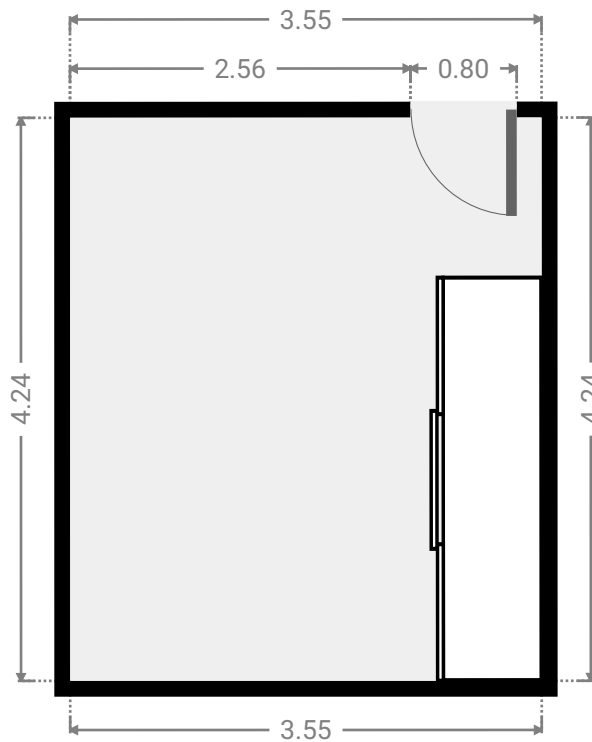
▼ **Hall**
Ground Floor

WIDTH: 2.26 m • LENGTH: 3.33 m
AREA: 5.59 m² • PERIMETER: 10.64 m



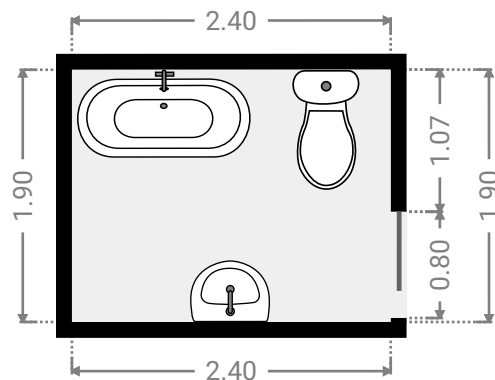
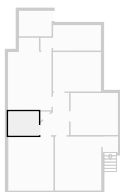
▼ **Bedroom**
Ground Floor

WIDTH: 3.55 m • LENGTH: 4.24 m
AREA: 15.05 m² • PERIMETER: 15.58 m



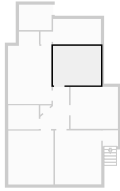
▼ **Bathroom**
Ground Floor

WIDTH: 2.40 m • LENGTH: 1.90 m
AREA: 4.56 m² • PERIMETER: 8.60 m



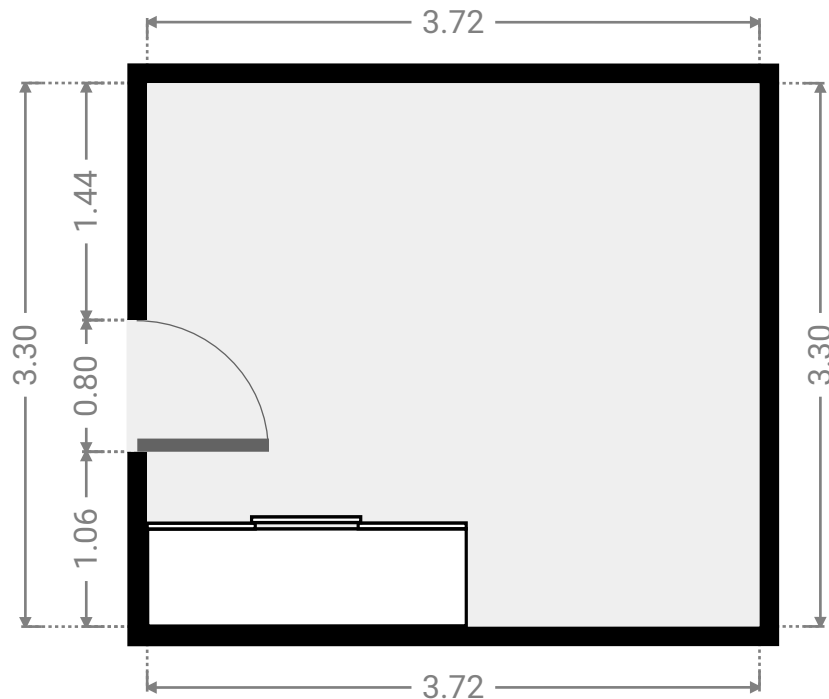
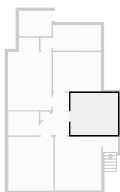
▼ **Bedroom**
Ground Floor

WIDTH: 3.77 m • LENGTH: 3.10 m
AREA: 11.68 m² • PERIMETER: 13.74 m



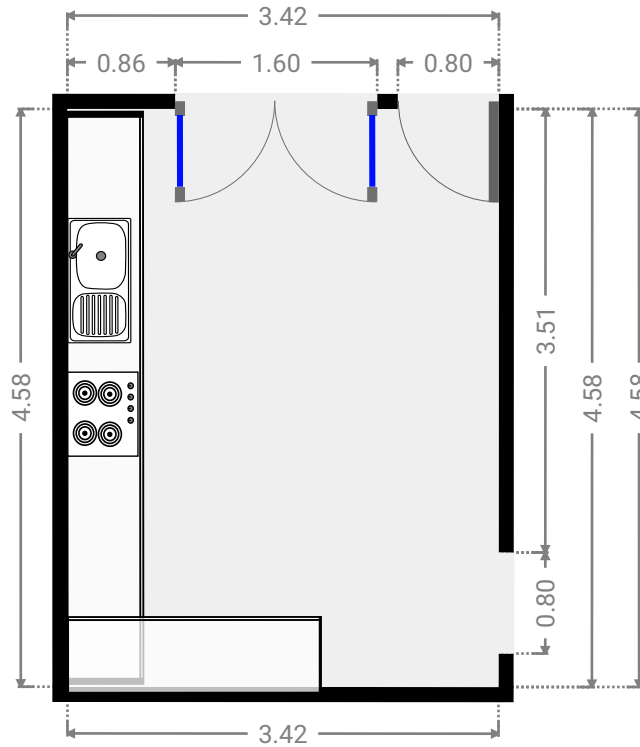
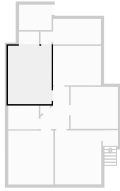
▼ **Bedroom**
Ground Floor

WIDTH: 3.72 m • LENGTH: 3.30 m
AREA: 12.28 m² • PERIMETER: 14.04 m



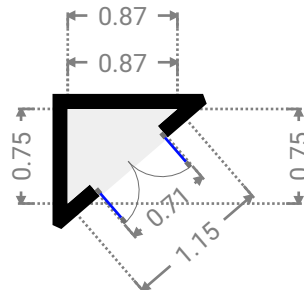
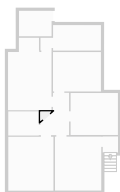
▼ **Kitchen**
Ground Floor

WIDTH: 3.42 m • LENGTH: 4.58 m
AREA: 15.65 m² • PERIMETER: 15.99 m



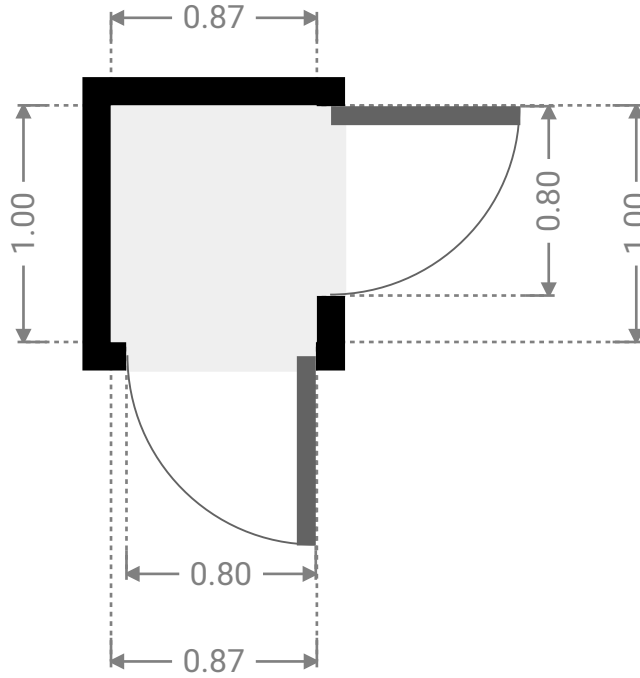
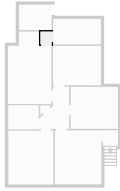
▼ **Closet**
Ground Floor

WIDTH: 0.87 m • LENGTH: 0.75 m
AREA: 0.33 m² • PERIMETER: 2.77 m



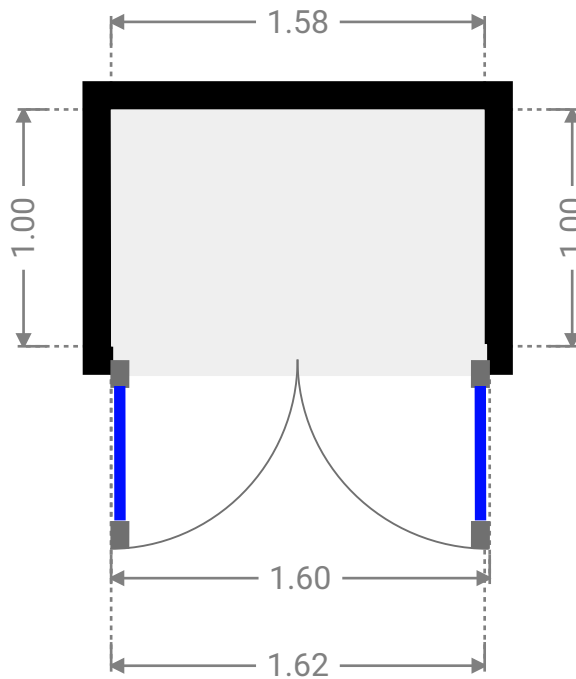
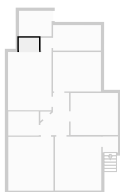
▼ Hall
Ground Floor

WIDTH: 0.87 m • LENGTH: 1.00 m
AREA: 0.87 m² • PERIMETER: 3.74 m



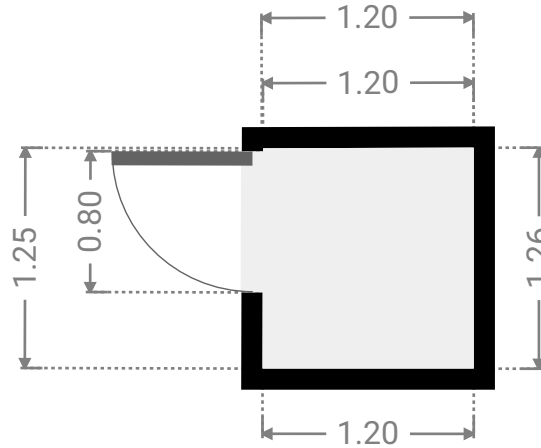
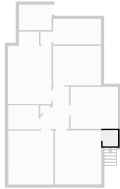
▼ Closet
Ground Floor

WIDTH: 1.58 m • LENGTH: 1.00 m
AREA: 1.58 m² • PERIMETER: 5.16 m



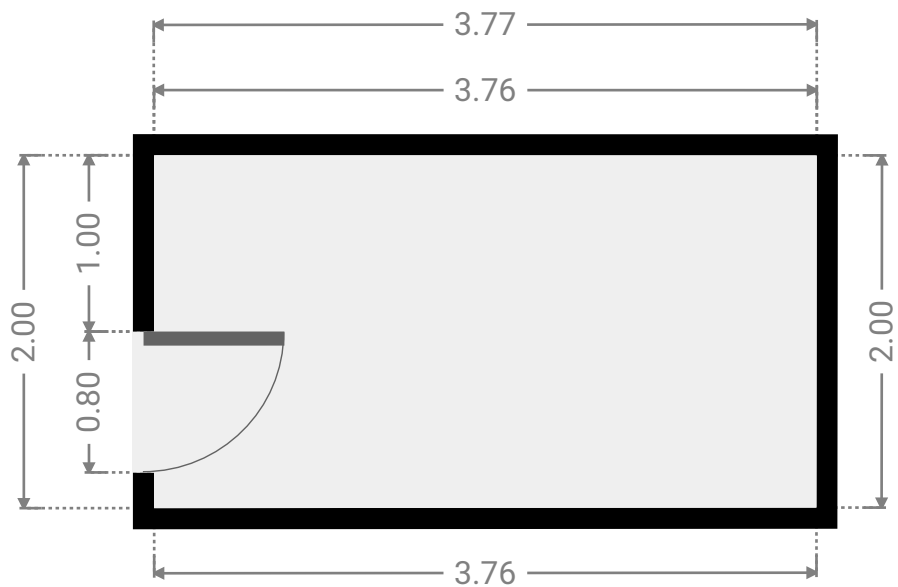
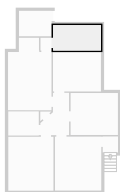
▼ Other
Ground Floor

WIDTH: 1.20 m • LENGTH: 1.26 m
AREA: 1.50 m² • PERIMETER: 4.90 m



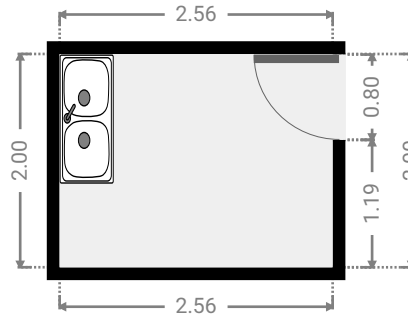
▼ Other
Ground Floor

WIDTH: 3.77 m • LENGTH: 2.00 m
AREA: 7.53 m² • PERIMETER: 11.53 m



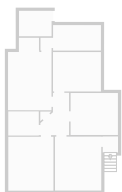
▼ **Laundry Room**
Ground Floor

WIDTH: 2.56 m • LENGTH: 2.00 m
AREA: 5.12 m² • PERIMETER: 9.12 m



▼ **Garage**
Ground Floor

WIDTH: 7.75 m • LENGTH: 4.92 m
AREA: 38.13 m² • PERIMETER: 25.34 m



▼ Other
Ground Floor

WIDTH: 4.30 m • LENGTH: 4.00 m
AREA: 17.20 m² • PERIMETER: 16.60 m

