

12 Conaghan street

SUBMITTED BY

Ray White Rockhampton Casey
stockers@cqoz.com

CREATED ON

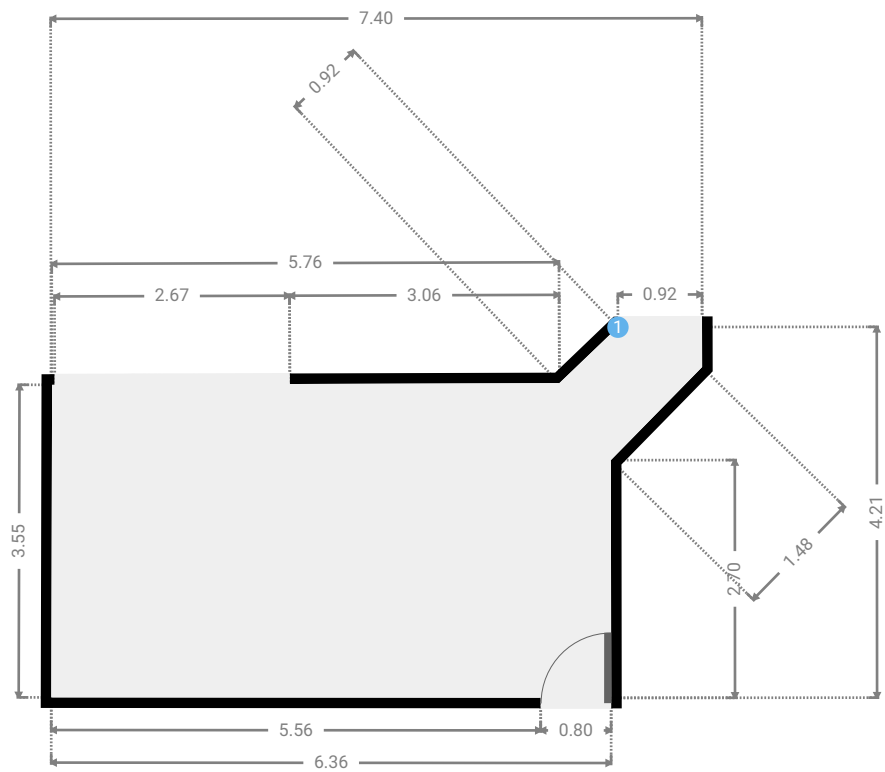
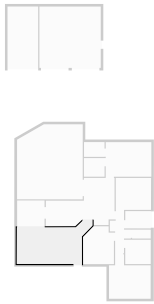
2022-03-09

Floors

1

▼ Living Room
Ground Floor

WIDTH: 7.40 m • LENGTH: 4.21 m
AREA: 23.82 m² • PERIMETER: 22.18 m



▼ Living Room/Ground Floor

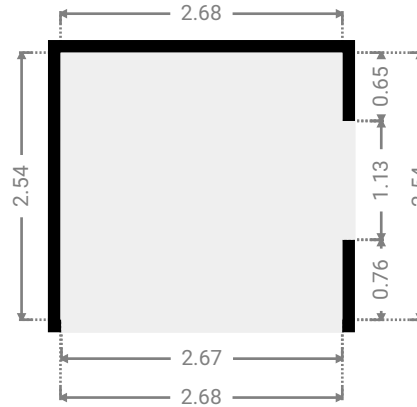
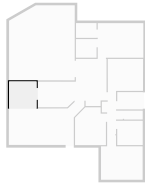
1 OPENING

Height
0.00 m



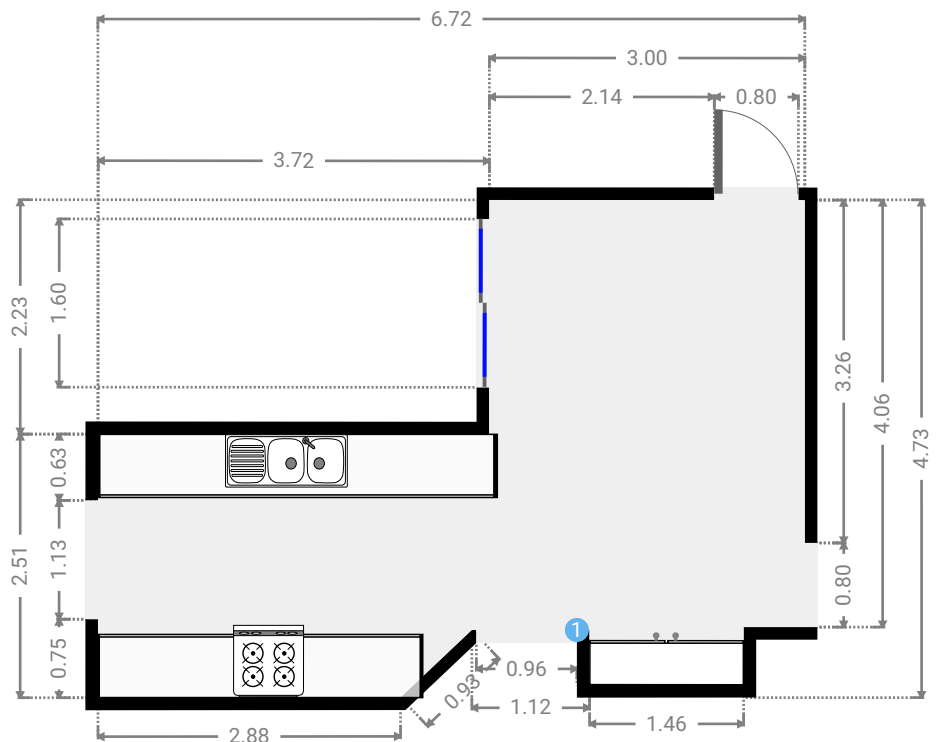
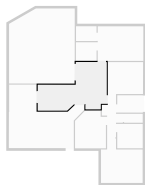
▼ Dining Room
Ground Floor

WIDTH: 2.68 m • LENGTH: 2.54 m
AREA: 6.81 m² • PERIMETER: 10.44 m



▼ Kitchen
Ground Floor

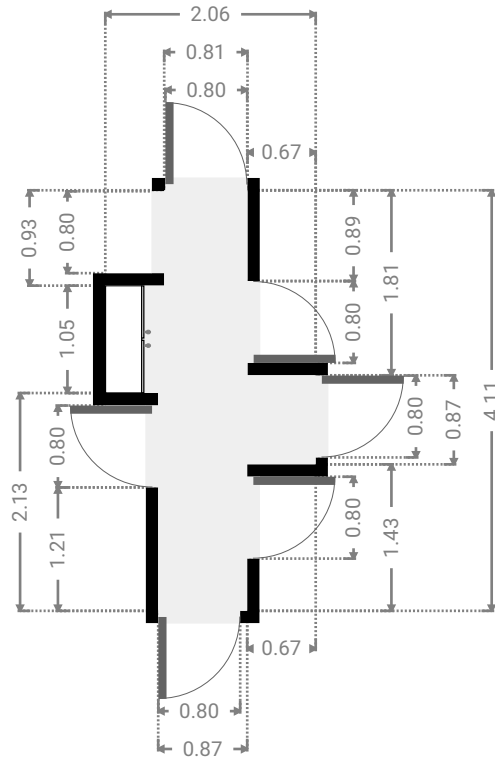
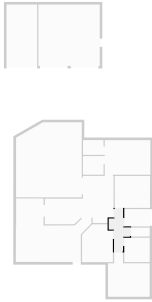
WIDTH: 6.72 m • LENGTH: 4.73 m
AREA: 22.01 m² • PERIMETER: 23.57 m



FLOORS: 1

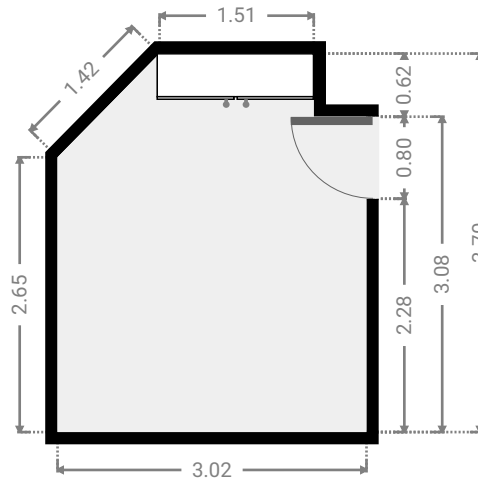
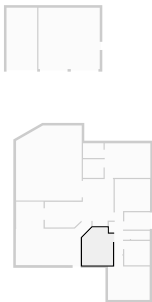
▼ **Hall**
Ground Floor

WIDTH: 2.06 m • LENGTH: 4.11 m
AREA: 4.65 m² • PERIMETER: 12.33 m



▼ **Bedroom**
Ground Floor

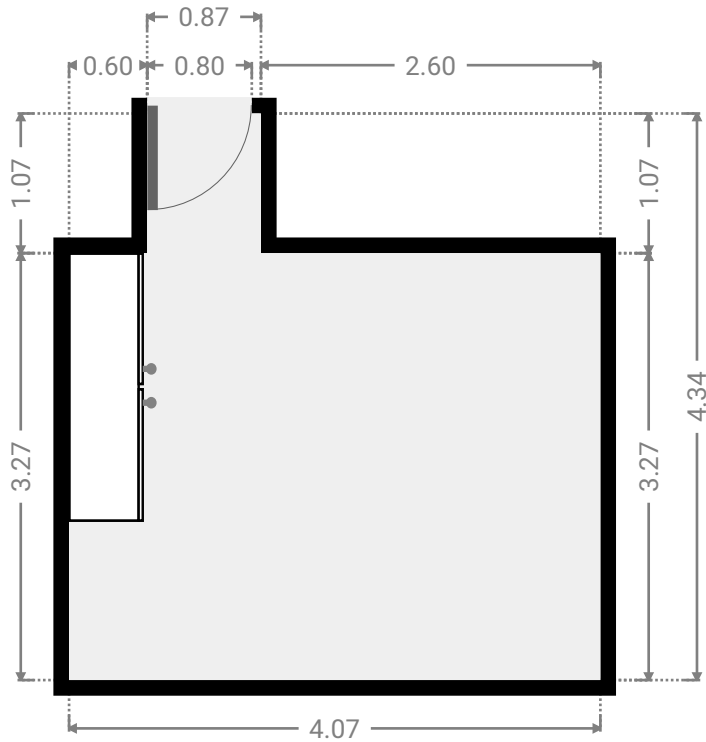
WIDTH: 3.02 m • LENGTH: 3.70 m
AREA: 10.35 m² • PERIMETER: 12.85 m



FLOORS: 1

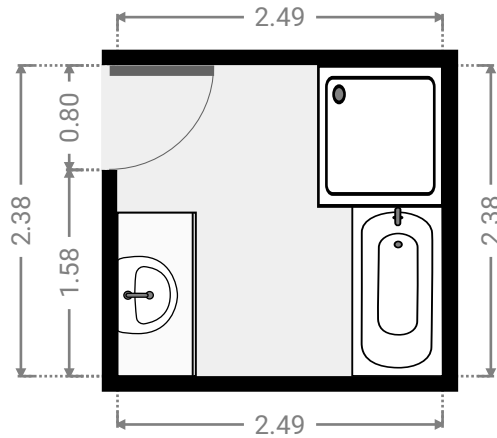
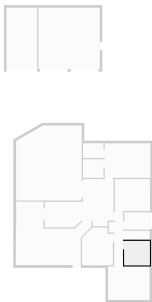
▼ **Bedroom**
Ground Floor

WIDTH: 4.07 m • LENGTH: 4.34 m
AREA: 14.24 m² • PERIMETER: 16.82 m



▼ **Bathroom**
Ground Floor

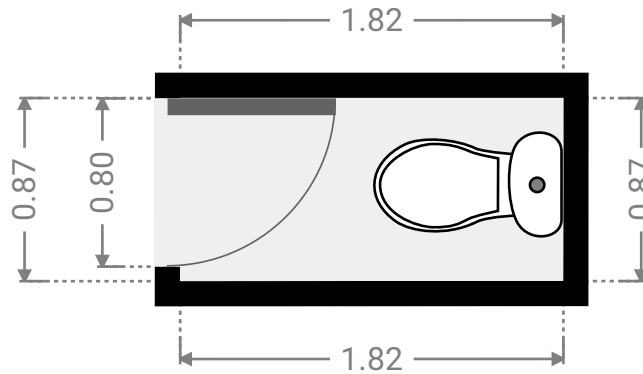
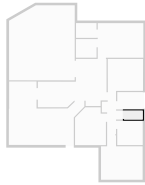
WIDTH: 2.49 m • LENGTH: 2.38 m
AREA: 5.93 m² • PERIMETER: 9.74 m



FLOORS: 1

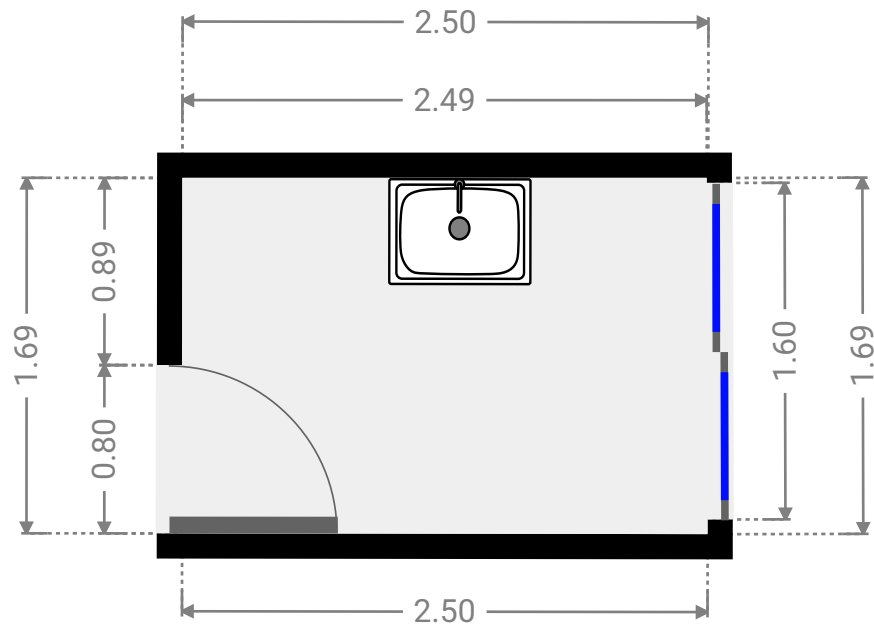
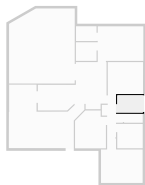
▼ Toilet
Ground Floor

WIDTH: 1.82 m • LENGTH: 0.87 m
AREA: 1.59 m² • PERIMETER: 5.38 m



▼ Laundry Room
Ground Floor

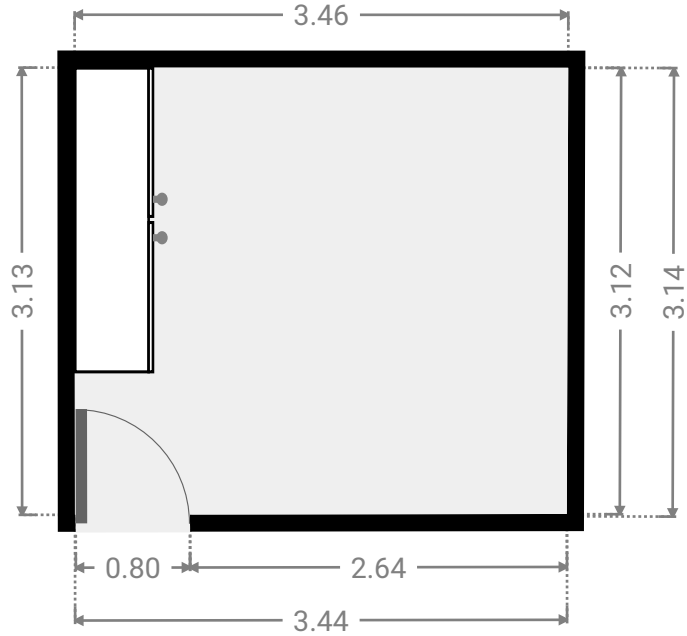
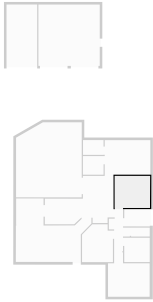
WIDTH: 2.50 m • LENGTH: 1.69 m
AREA: 4.22 m² • PERIMETER: 8.38 m



FLOORS: 1

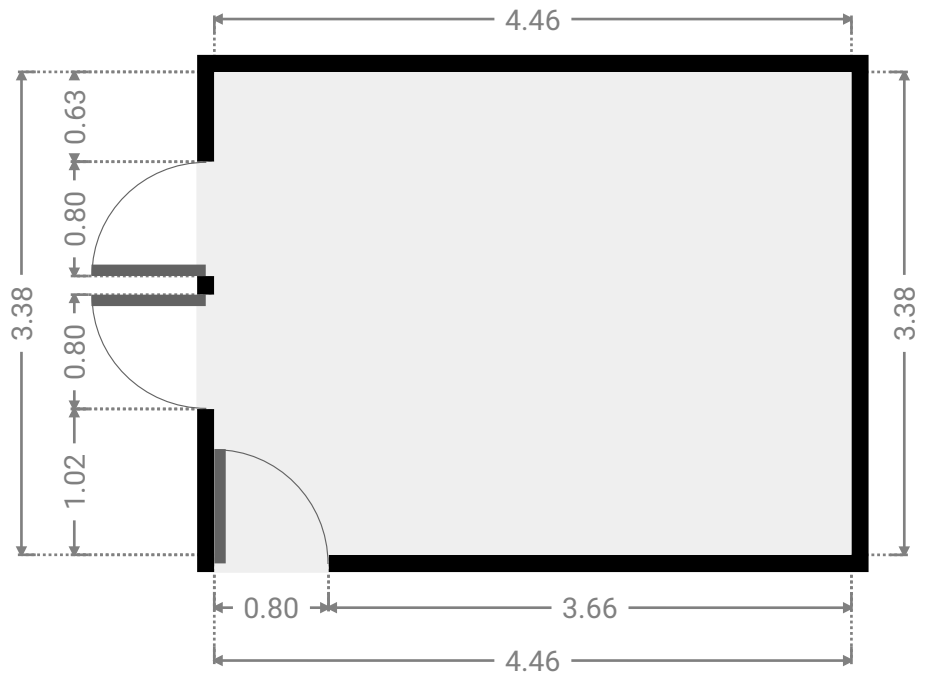
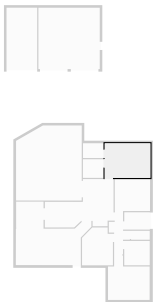
▼ **Bedroom**
Ground Floor

WIDTH: 3.46 m • LENGTH: 3.14 m
AREA: 10.79 m² • PERIMETER: 13.15 m



▼ **Primary Bedroom**
Ground Floor

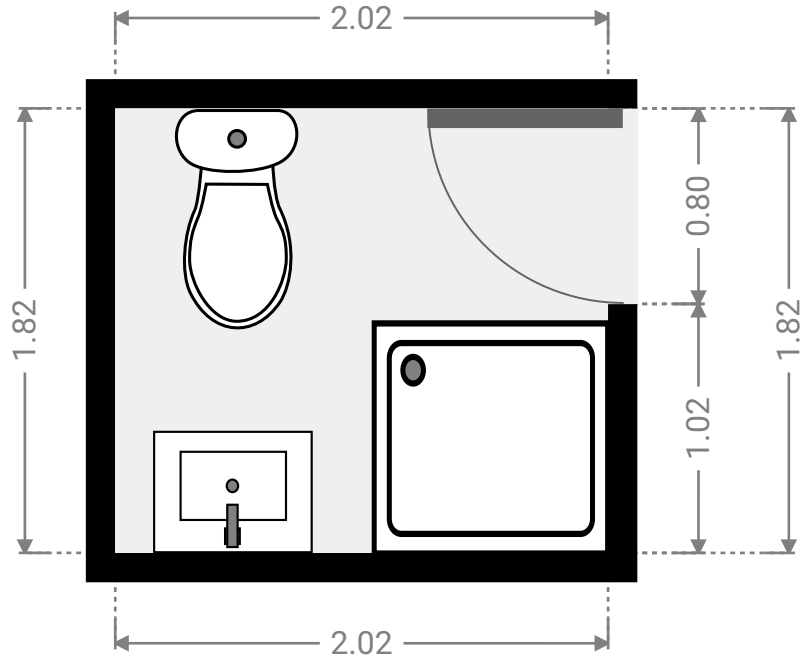
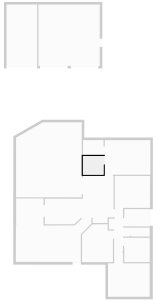
WIDTH: 4.46 m • LENGTH: 3.38 m
AREA: 15.07 m² • PERIMETER: 15.68 m



FLOORS: 1

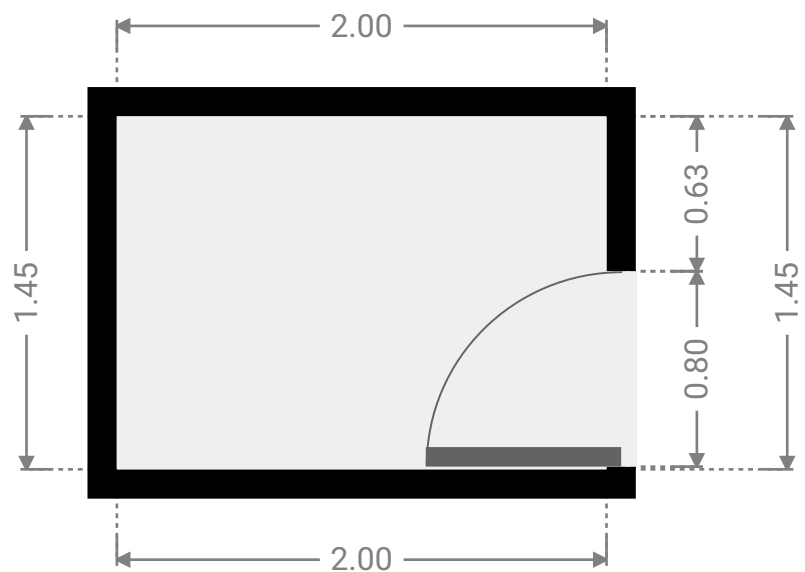
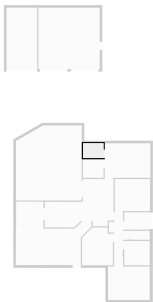
▼ **Bathroom**
Ground Floor

WIDTH: 2.02 m • LENGTH: 1.82 m
AREA: 3.67 m² • PERIMETER: 7.68 m



▼ **Closet**
Ground Floor

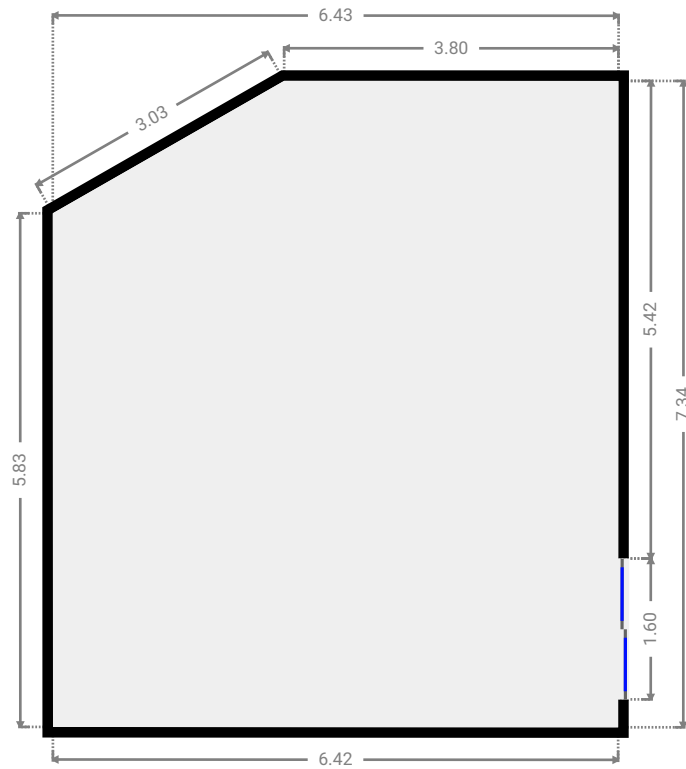
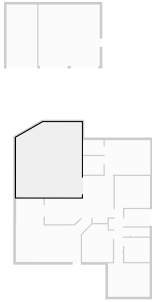
WIDTH: 2.00 m • LENGTH: 1.45 m
AREA: 2.90 m² • PERIMETER: 6.90 m



FLOORS: 1

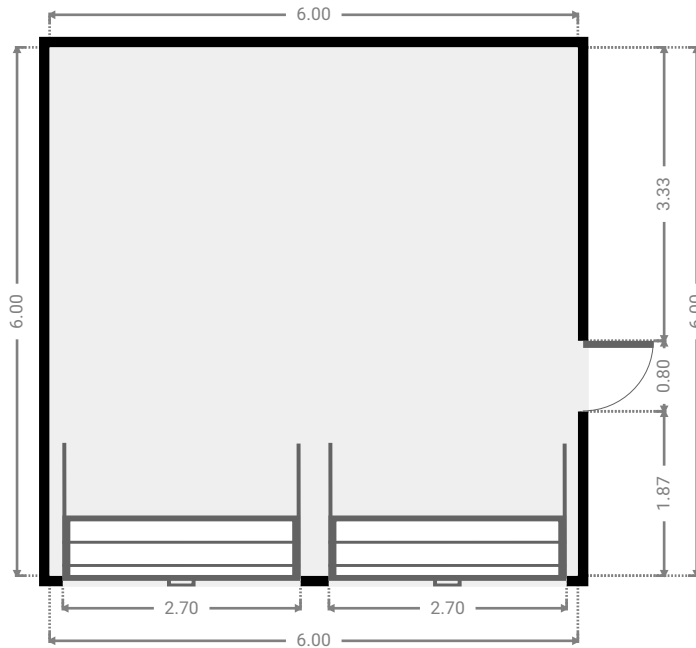
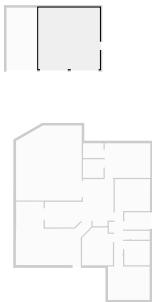
▼ Other
Ground Floor

WIDTH: 6.43 m • LENGTH: 7.34 m
AREA: 45.17 m² • PERIMETER: 26.42 m



▼ Other
Ground Floor

WIDTH: 6.00 m • LENGTH: 6.00 m
AREA: 36.00 m² • PERIMETER: 24.00 m



▼ Other
Ground Floor

WIDTH: 3.00 m • LENGTH: 6.00 m
AREA: 18.00 m² • PERIMETER: 18.00 m

